

4

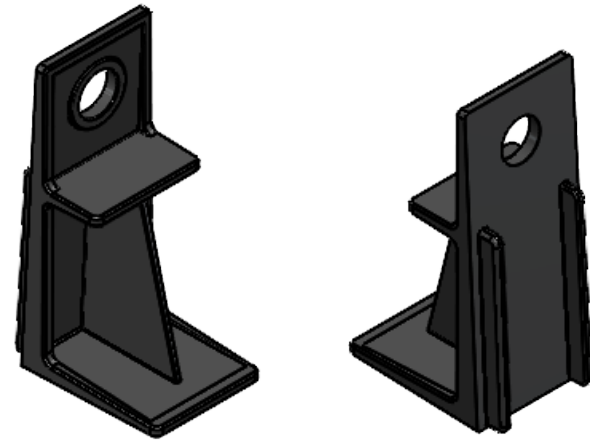
3

2

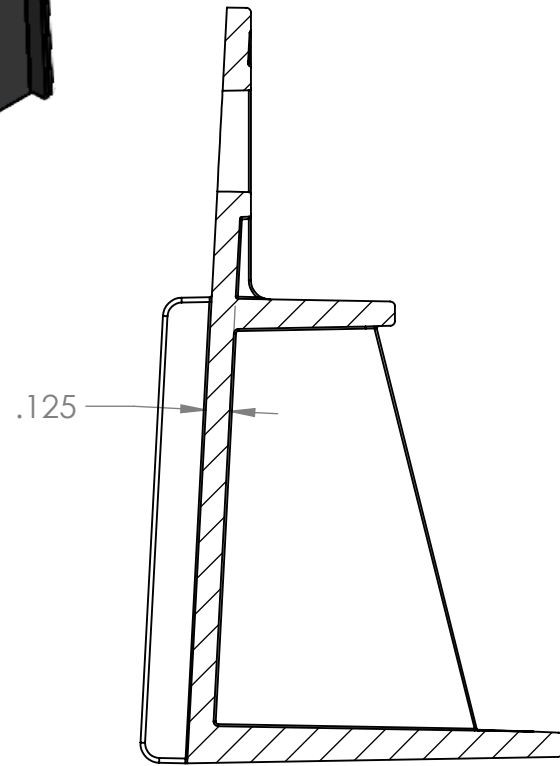
1

- 1. CAD generated drawing - Do not update manually. This drawing to be used for reference only. Detailed model information is available from SolidWorks 3D files.
- 2. Decimal tolerances .X = ±.1 .XX = ±.01 .XXX = ±.005 unless noted.
- 3. Break all sharp edges to .01" unless noted.
- 4. Parts to have minimal burrs, sink marks and flash.
- 5. Material- Polypropylene (20% GF)
- 6. Color- Black.
- 7. EDM finish on all outer surfaces. No texture required on internal surfaces.

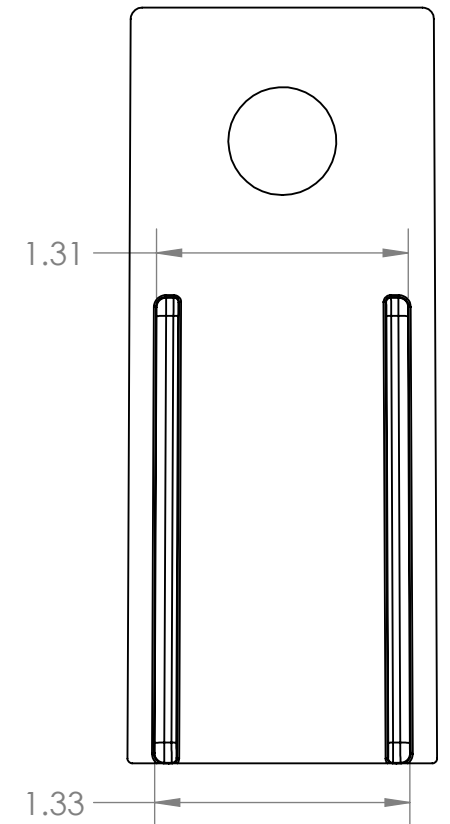
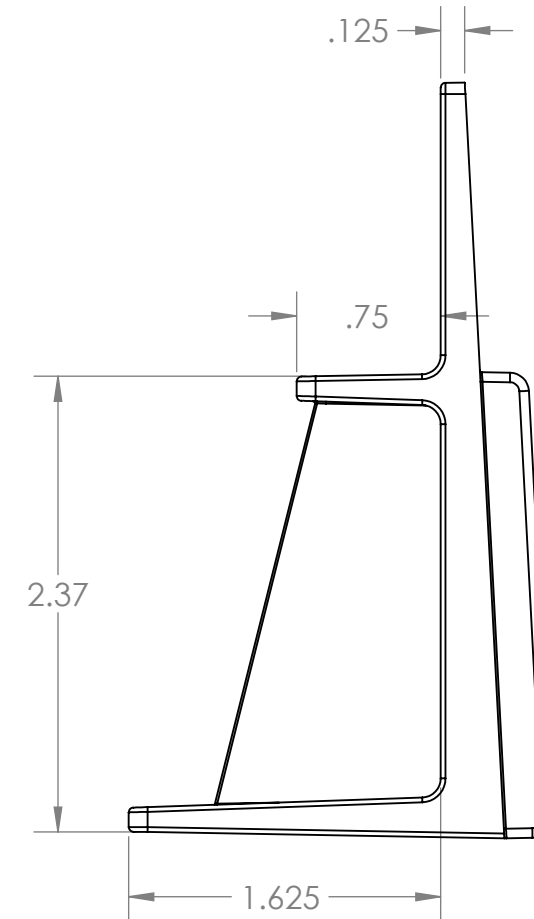
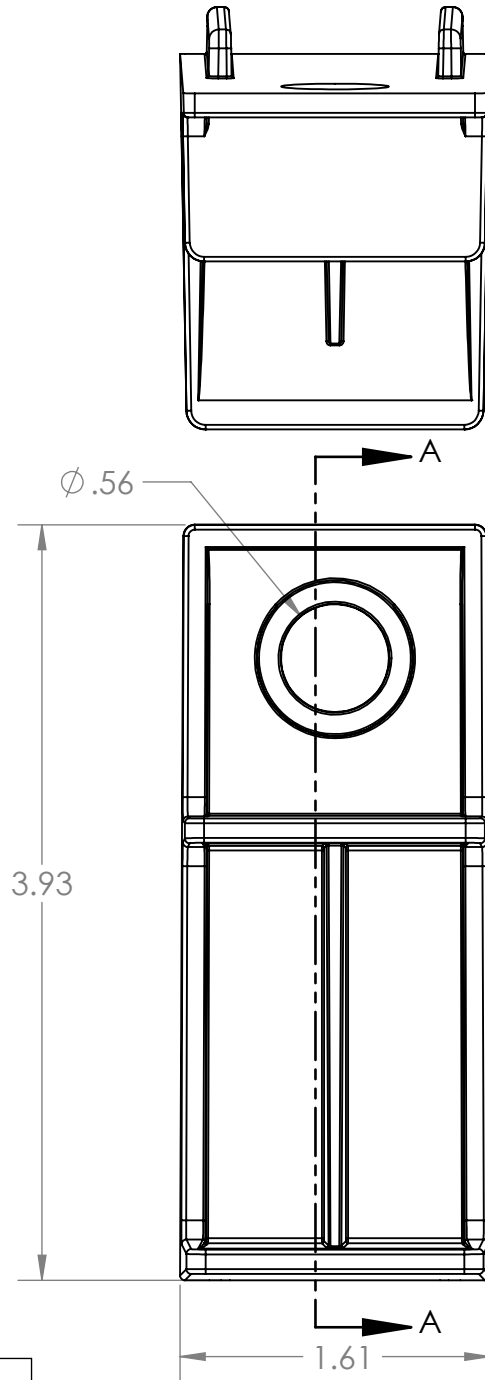
REVISIONS				
ZONE	REV.	DESCRIPTION	DATE	APPROVED



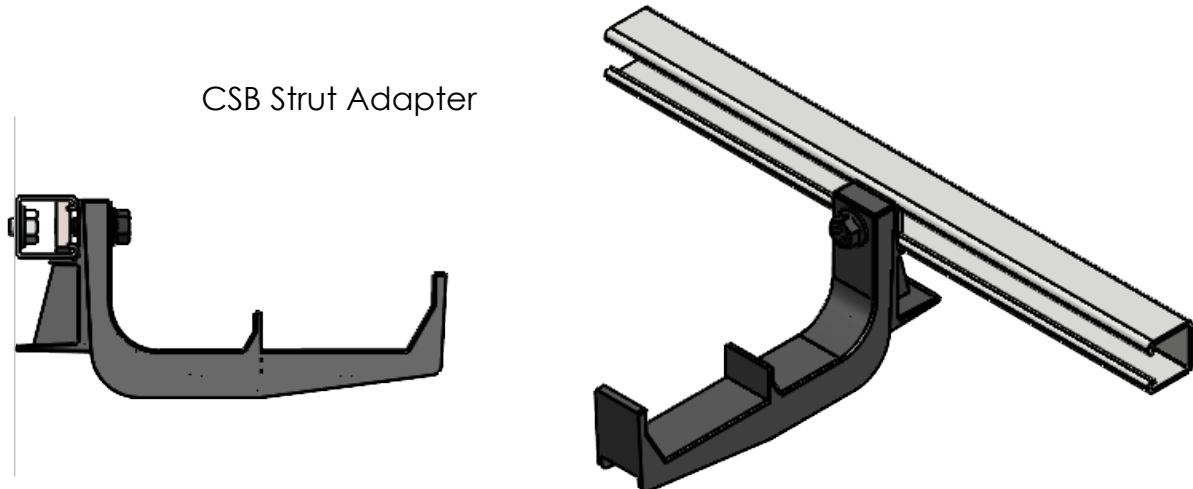
Aprox. Volume 1.85 cubic inches



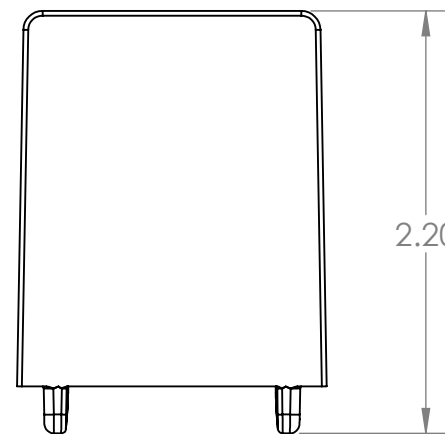
SECTION A-A



90 Degree Adapter for CSB-X Brackets used on Strut Stanchions



CSB Strut Adapter



PROPRIETARY AND CONFIDENTIAL				
SIZE	DWG. NO.			
B	CSB Strut Adapter			
SCALE: 1:1	DATE: 4-4-2022	SHEET 1 OF 1		

4

3

2

1

B

B

A

A