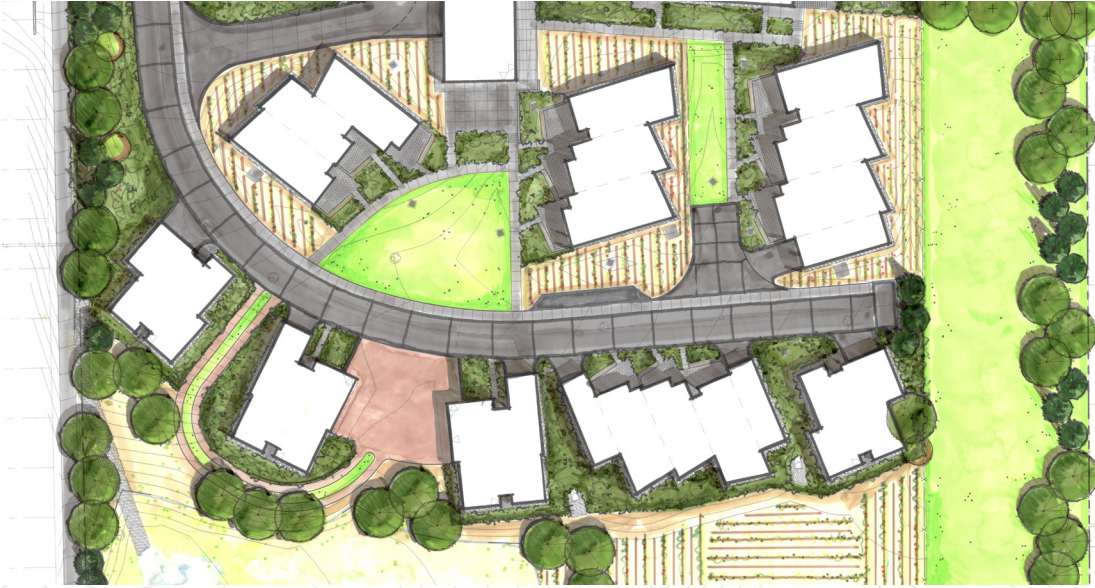


Bohn Farm



JB Fieldworks is working to bring this specific ambition of Colorado Cohousing Development Co. to life. The vision is to create a place where members can enjoy living in an organic farm to table community that houses 40 mixed income dwelling units and a 1.6 acre community supported agriculture farm. The plan includes an orchard, rows and rows of permaculture garden beds, and an underground barn that will allow residents to produce much of their food in their own backyards and in co-operation with their neighbors. Many of the plants have been selected for an edible landscape, and the design proposes a landscape that is both beautiful and supports the mission of bringing food sources closer to home.

Location:
Longmont, CO

Client:
Colorado Cohousing
Development Co.

Scope:
Landscape Architecture

Completion Date:
On the Boards

JB FIELDWORKS

2601 Spruce Street
Unit A
Boulder, CO 80302
734.626.5467
jbfeldworks.com