

## MAIN DISH メイン

BOWL OF RICE SERVED WITH MISO SOUP & SALAD

- |                            |      |                         |      |
|----------------------------|------|-------------------------|------|
| 1. Teriyaki Tofu Set       | \$22 | 7. Pork Shogayaki Set   | \$25 |
| 2. Teriyaki Chicken Set    | \$23 | 8. Spicy Chicken Set    | \$25 |
| 3. Teriyaki Wagyu Beef Set | \$25 | 9. Soft Shell Crab Set  | \$28 |
| 4. Chicken Katsu Set       | \$23 | 10. Teriyaki Salmon Set | \$28 |
| 5. Pork Katsu Set          | \$26 | 11. Wafu Steak Set      | \$29 |
| 6. Karage Chicken Set      | \$24 |                         |      |



Pork Katsu Set



Wafu Steak Set



Soft Shell Crab Set



Chicken Teriyaki Set

## CURRY カレー

SERVED WITH MISO AND SALAD

- |                        |      |
|------------------------|------|
| 1. Pumpkin Curry       | \$22 |
| 2. Tofu Curry          | \$22 |
| 3. Beef Curry Wagyu    | \$25 |
| 4. Chicken Katsu Curry | \$23 |
| 5. Pork Katsu Curry    | \$26 |

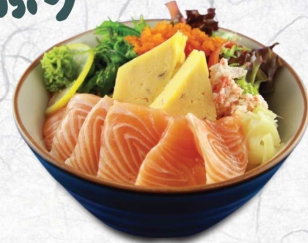


Pork Katsu Curry

## COLD DONBURI どんぶり

SERVED WITH MISO SOUP

- |                                          |      |
|------------------------------------------|------|
| 1. Tasmania Don                          | \$27 |
| Fresh mixed sashimi topped on sushi rice |      |
| 2. Salmon Sashimi Don                    | \$25 |
| Fresh salmon topped on sushi rice        |      |



Salmon Sashimi Don

## HOT DONBURI どんぶり

SERVED WITH MISO SOUP & SALAD

- |                                        |      |
|----------------------------------------|------|
| 1. Chicken Katsu Don                   | \$23 |
| Chicken cutlet, egg with onion sauce   |      |
| 2. Pork Katsu Don                      | \$26 |
| Pork cutlet, egg with onion sauce      |      |
| 3. Wagyu Beef Don                      | \$25 |
| Grilled wagyu beef with onion and kale |      |
| 4. Tempura Don                         | \$24 |
| Mixed Tempura, onion sauce             |      |
| 5. Unadon                              | \$28 |
| Grilled Eel with special Eel Sauce     |      |



Wagyu Beef Don

## UDON うどん

JAPANESE TRADITIONAL NOODLE SOUP

- |                 |      |
|-----------------|------|
| 1. Plain Udon   | \$21 |
| 2. Stamina Udon | \$25 |
| 3. Chicken Udon | \$24 |
| 4. Seafood Udon | \$26 |
| 5. Tempura Udon | \$24 |
| 6. Yaki Udon    | \$24 |



Seafood Udon