

Mouse Anti-Melanoma/gp100/PMEL17/SILV [HMB45]: MC0190, MC0190RTU7

Intended Use: For Research Use Only

Description: Metastatic melanoma is often confused with a variety of poorly differentiated carcinomas, sarcomas, and large cell lymphomas. Clone HMB45 reacts with fetal and neonatal melanocytes but not with normal adult melanocytes, junctional nevus cells but not with intradermal nevi, hence showing specificity for detection of melanocytic tumors. The panel of tumor markers, most commonly used in conjunction with HMB45, for evaluation of melanoma includes S-100 protein LCA, CEA, and EMA, as well as vimentin, an intermediate filament found in both melanomas and sarcomas.

Specifications

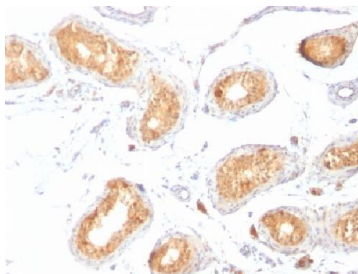
Clone: HMB45
 Source: Mouse
 Isotype: IgG1k
 Reactivity: Human
 Localization: Cytoplasm
 Formulation: Antibody in PBS pH7.4, containing BSA and $\leq 0.09\%$ sodium azide (NaN₃)
 Storage: Store at 2°- 8°C
 Applications: IHC, Flow Cyt., ICC/IF
 Package:

Description	Catalog No.	Size
Melanoma/gp100/PMEL17/SILV Concentrated	MC0190	1 ml
Melanoma/gp100/PMEL17/SILV Prediluted	MC0190RTU7	7 ml

IHC Procedure*

Positive Control Tissue: Melanoma
 Concentrated Dilution: 50-200
 Pretreatment: Citrate pH6.0 or EDTA pH8.0, 15 minutes using Pressure Cooker, or 30-60 minutes using water bath at 95°-99°C
 Incubation Time and Temp: 30-60 minutes @ RT
 Detection: Refer to the detection system manual

* Result should be confirmed by an established diagnostic procedure.



FFPE human testis stained with anti-HMB45 using DAB

References:

1. Hepatic epithelioid angiomyolipoma is a rare and potentially severe but treatable tumor: A report of three cases and review of the literature. Liu W, et al. *Oncol Lett* 11:3669-3675, 2016.
2. Surgical monotherapy may be a suitable therapeutic strategy for advanced collecting (Bellini) duct carcinoma: A case report and literature review. Zhu L et al. *Exp Ther Med* 12:1181-1184, 2016.
3. STX13 regulates cargo delivery from recycling endosomes during melanosome biogenesis. Jani RA, et al. *J Cell Sci* 128:3263-76, 2015.
4. Punctate LC3B expression is a common feature of solid tumors and associated with proliferation, metastasis, and poor outcome. Lazova R, et al. *Clin Cancer Res* 18:370-9, 2012.
5. The tetraspanin CD63 regulates ESCRT-independent and -dependent endosomal sorting during melanogenesis. van Niel G, et al. *Dev Cell* 21:708-21, 2011.