

Ashcroft

North Ranch - North Las Vegas, NV
Single Family Homes




Exterior Color Schemes *For Field Use*

for



Elevations designed by
Internal Architect

 Michelle Bridges
Architectural Colors, Inc.

9.9.19

NOTE: All photographs of stone, brick, masonry and roof tiles are for representation only - See actual samples for exact colors.
MBACi not responsible for manufacturer color printed materials being off from actual materials.

Ashcroft at North Ranch - North Las Vegas, Nevada

Pulte Group

EXTERIOR COLOR SCHEMES DOCUMENT (ECS)

COLORS BY: MICHELLE BRIDGES - ARCHITECTURAL COLORS, INC. 
SEE COLOR KEYED ELEVATIONS / COLOR KEYED ECS FOR EXACT PLACEMENT OF COLOR

9.9.19 MBACI reused Catalina with updates

STUCCO: SHERWIN WILLIAMS PAINT: SHERWIN WILLIAMS ROOF: BORAL - SOUTHERN NEVADA GARAGE DOORS: WAYNE DALTON				STONE: ENVIRONMENTAL STONE WORKS BRICK: N/A MORTAR: ORCO BUILDING PRODUCTS OBP LT. KHAKI COLOR			
ALL SCHEMES TO WORK ON ALL ELEVATION TYPES							
COLOR SCHEME COLOR APPLICATION		1	2	3			
STUCCO BODY		SW 7043 WORLDLY GREY	SW 7011 NATURAL CHOICE	SW 7526 MAISON BLANCHE			
FASCIA / EAVES / CORBELS		SW 7033 BRAINSTORM BRONZE	SW 7027 WELL-BRED BROWN	SW 7639 ETHEREAL MOOD			
TRIM		SW 7031 MEGA GREIGE	SW 7634 PEDIMENT	SW 7008 ALABASTER			
GARAGE DOORS		BROWN	BROWN	DESERT TAN			
ENTRY DOORS / SHUTTERS		SW 6235 FOGGY DAY	SW 7083 DARKROOM	SW 6213 HALYCON GREEN			
CLAY DECOR PIPES AT GABLE ENDS		SW 6061 TANBARK	SW 6061 TANBARK	SW 6061 TANBARK			
ANY METAL IRON DETAILS / RAILINGS / SHUTTERS HINGES ETC		SW 6258 TRICORN BLACK if painted / Black by Manufacturer if powder coated	SW 6258 TRICORN BLACK if painted / Black by Manufacturer if powder coated	SW 6258 TRICORN BLACK if painted / Black by Manufacturer if powder coated			
STONE VENEER EXTERIOR		GREY DRIFT COBBLE LEDGE	SANTA CRUZ CHISEL ROCK	SANTA CRUZ CHISEL ROCK			
ROOF MATERIAL: 'B' ELEVATIONS ONLY FLAT STATE PROFILE		1FACS 2010 OCEANA	1FACS 3233 BROWN BLEND	1FACS 0024 DESERT SAGE			
ROOF MATERIAL: 'A' & 'C' ELEVATIONS ONLY FULL 'S' PROFILE		1BCCS 0939 TOAST	1BCCS 3601 DESERT DRIFTWOOD	1BCCS 3940 CLIFFSIDE			
COLOR SCHEME COLOR APPLICATION		4	5	6			
STUCCO BODY		SW 7024 FUNCTIONAL GRAY	SW 7543 AVENUE TAN	SW 7506 LOGGIA			
FASCIA / EAVES / CORBELS		SW 7634 PEDIMENT	SW 6133 MUSLIN	SW 7571 CASA BLANCA			
TRIM		SW 6074 SPALDING GRAY	SW 6144 DAPPER TAN	SW 7017 DORIAN GRAY			
GARAGE DOORS		DESERT TAN	DESERT TAN	TAUPE			
ENTRY DOORS / SHUTTERS		SW 6207 RETREAT	SW 7062 ROCK BOTTOM	SW 6117 SMOKEY TOPAZ			
CLAY DECOR PIPES AT GABLE ENDS		SW 6061 TANBARK	SW 6061 TANBARK	SW 6061 TANBARK			
ANY METAL IRON DETAILS / RAILINGS / SHUTTERS HINGES ETC		SW 6258 TRICORN BLACK if painted / Black by Manufacturer if powder coated	SW 6258 TRICORN BLACK if painted / Black by Manufacturer if powder coated	SW 6258 TRICORN BLACK if painted / Black by Manufacturer if powder coated			
STONE VENEER EXTERIOR		SIERRA WEATHER EDGE LEDGESTONE	CHABLIS BAYOU BLEND	SIERRA WEATHER EDGE LEDGESTONE			
ROOF MATERIAL: 'B' ELEVATIONS ONLY FLAT STATE PROFILE		1FACS 2010 OCEANA	1FACS 0024 DESERT SAGE	1FACS 3233 BROWN BLEND			
ROOF MATERIAL: 'A' & 'C' ELEVATIONS ONLY FULL 'S' PROFILE		1BCCS 7330 VERONA CLAY	1BCCS 3940 CLIFFSIDE	1BCCS 3601 DESERT DRIFTWOOD			
COLOR SCHEME COLOR APPLICATION		7	8	9			
STUCCO BODY		SW 7638 JOGGING PATH	SW 7503 STICKS & STONES	SW 7535 SANDY RIDGE			
FASCIA / EAVES / CORBELS		SW 6119 ANTIQUÉ WHITE	SW 7575 CHOP STICKS	SW 7035 AESTHETIC WHITE			
TRIM		SW 0023 PEWTER TANKARD	SW 7037 BALANCED BEIGE	SW 7532 URBAN PUTTY			
GARAGE DOORS		DESERT TAN	TAUPE	DESERT TAN			
ENTRY DOORS / SHUTTERS		SW 6061 TANBARK	SW 6992 INKWELL	SW 2803 ROOKWOOD TERRACOTTA			
CLAY DECOR PIPES AT GABLE ENDS		SW 6061 TANBARK	SW 6061 TANBARK	SW 6061 TANBARK			
ANY METAL IRON DETAILS / RAILINGS / SHUTTERS HINGES ETC		SW 6258 TRICORN BLACK if painted / Black by Manufacturer if powder coated	SW 6258 TRICORN BLACK if painted / Black by Manufacturer if powder coated	SW 6258 TRICORN BLACK if painted / Black by Manufacturer if powder coated			
STONE VENEER EXTERIOR		GREY DRIFT COBBLE LEDGE	GREY DRIFT COBBLE LEDGE	CHABLIS BAYOU BLEND			
ROOF MATERIAL: 'B' ELEVATIONS ONLY FLAT STATE PROFILE		1FACS 0024 DESERT SAGE	1FACS 2010 OCEANA	1FACS 3233 BROWN BLEND			
ROOF MATERIAL: 'A' & 'C' ELEVATIONS ONLY FULL 'S' PROFILE		1BCCS 3601 DESERT DRIFTWOOD	1BCCS 0939 TOAST	1BCCS 7330 VERONA CLAY			

General Notes:

All Colors and Materials are recommendations based solely upon aesthetic value for the exclusive internal use by SAID BUILDER. Any other use is prohibited. MBACI shall not be held liable for any errors or product failure on manufacturers or contractor/subcontractors part in the field (i.e. stucco, masonry, paint manufacturers errors, etc).

Gutters and Downspouts / Mandors & Vents to be painted adjacent surface color u.o.n.

All Point to return to inside corners including under balconies and cantiliver areas.

Substitutions for any material is not to be made without final approval from MBACI office.

NOTE: All photographs of stone, brick, masonry and roof tiles are for representation only - See actual samples for exact colors.

MBACI not responsible for manufacturer color printed materials being off from actual materials.

Above Color Schemes are exclusive property of MBACI. Any reuse of any C & M Selections other than at above said property must receive approval by MBACI

Ashcroft at North Ranch * North Las Vegas, NV

Pulte Group

Exterior Color Scheme

9.9.19

1

To be used on
ALL Elevations

ROOF - 'B' - ELEVS ONLY



ROOF - 'A & C' - ELEVS ONLY



	STUCCO BODY	SW 7043 WORLDLY GREY	
	FASCIA / EAVES / CORBELS	SW 7033 BRAINSTORM BRONZE	
	TRIM	SW 7031 MEGA GREIGE	
	GARAGE DOORS	BROWN	
	ENTRY DOORS / SHUTTERS	SW 6235 FOGGY DAY	
	CLAY DECOR PIPES AT GABLE ENDS	SW 6061 TANBARK	
	ANY METAL IRON DETAILS / RAILINGS / SHUTTERS HINGES	SW 6258 TRICORN BLACK if painted / Black by Manufacturer if powder coated	

STONE VENEER
GREY DRIFT
COBBLE LEDGE



Ashcroft at North Ranch * North Las Vegas, NV

Pulte Group

Exterior Color Scheme

9.9.19

2

To be used on
ALL Elevations

ROOF - 'B' - ELEVS ONLY



ROOF - 'A & C' - ELEVS ONLY



	STUCCO BODY	SW 7011 NATURAL CHOICE	
	FASCIA / EAVES / CORBELS	SW 7027 WELL-BRED BROWN	
	TRIM	SW 7634 PEDIMENT	
	GARAGE DOORS	BROWN	
	ENTRY DOORS / SHUTTERS	SW 7083 DARKROOM	
	CLAY DECOR PIPES AT GABLE ENDS	SW 6061 TANBARK	
	ANY METAL IRON DETAILS / RAILINGS / SHUTTERS HINGES	SW 6258 TRICORN BLACK if painted / Black by Manufacturer if powder coated	

STONE VENEER
SANTA CRUZ
CHISEL ROCK



Ashcroft at North Ranch * North Las Vegas, NV

Pulte Group

Exterior Color Scheme

9.9.19

3

To be used on
ALL Elevations

ROOF - 'B' - ELEVS ONLY

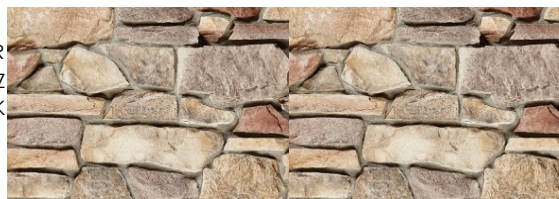


ROOF - 'A & C' - ELEVS ONLY



	STUCCO BODY	SW 7526 MAISON BLANCHE	
	FASCIA / EAVES / CORBELS	SW 7639 ETHEREAL MOOD	
	TRIM	SW 7008 ALABASTER	
	GARAGE DOORS	DESERT TAN	
	ENTRY DOORS / SHUTTERS	SW 6213 HALYCON GREEN	
	CLAY DECOR PIPES AT GABLE ENDS	SW 6061 TANBARK	
	ANY METAL IRON DETAILS / RAILINGS / SHUTTERS HINGES	SW 6258 TRICORN BLACK if painted / Black by Manufacturer if powder coated	

STONE VENEER
SANTA CRUZ
CHISEL ROCK



Ashcroft at North Ranch * North Las Vegas, NV

Pulte Group

Exterior Color Scheme

9.9.19

4

To be used on
ALL Elevations

ROOF - 'B' - ELEVS ONLY

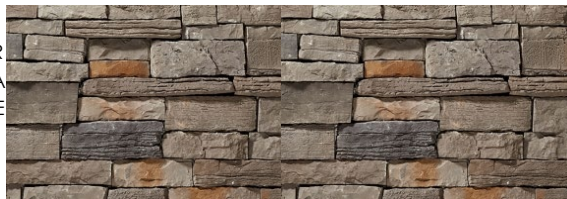


ROOF - 'A & C' - ELEVS ONLY



	STUCCO BODY	SW 7024 FUNCTIONAL GRAY	
	FASCIA / EAVES / CORBELS	SW 7634 PEDIMENT	
	TRIM	SW 6074 SPALDING GRAY	
	GARAGE DOORS	DESERT TAN	
	ENTRY DOORS / SHUTTERS	SW 6207 RETREAT	
	CLAY DECOR PIPES AT GABLE ENDS	SW 6061 TANBARK	
	ANY METAL IRON DETAILS / RAILINGS / SHUTTERS HINGES	SW 6258 TRICORN BLACK if painted / Black by Manufacturer if powder coated	

STONE VENEER
SIERRA
WEATHER EDGE LEDGESTONE



Ashcroft at North Ranch * North Las Vegas, NV

Pulte Group

Exterior Color Scheme

9.9.19

5



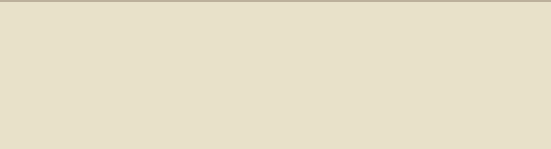









To be used on
ALL Elevations

ROOF - 'B' - ELEVS ONLY



ROOF - 'A & C' - ELEVS ONLY



	STUCCO BODY	SW 7543 AVENUE TAN	
	FASCIA / EAVES / CORBELS	SW 6133 MUSLIN	
	TRIM	SW 6144 DAPPER TAN	
	GARAGE DOORS	DESERT TAN	
	ENTRY DOORS / SHUTTERS	SW 7062 ROCK BOTTOM	
	CLAY DECOR PIPES AT GABLE ENDS	SW 6061 TANBARK	
	ANY METAL IRON DETAILS / RAILINGS / SHUTTERS HINGES	SW 6258 TRICORN BLACK if painted / Black by Manufacturer if powder coated	

STONE VENEER
CHABLIS
BAYOU BLEND



Ashcroft at North Ranch * North Las Vegas, NV

Pulte Group

Exterior Color Scheme

9.9.19

6

To be used on
ALL Elevations

ROOF - 'B' - ELEVS ONLY

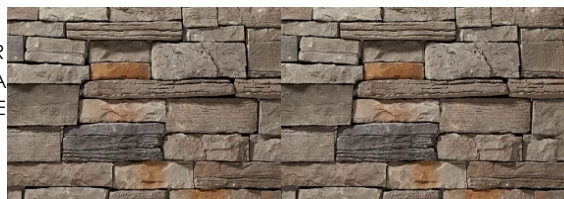


ROOF - 'A & C' - ELEVS ONLY



	STUCCO BODY	SW 7506 LOGGIA	
	FASCIA / EAVES / CORBELS	SW 7571 CASA BLANCA	
	TRIM	SW 7017 DORIAN GRAY	
	GARAGE DOORS	TAUPE	
	ENTRY DOORS / SHUTTERS	SW 6117 SMOKEY TOPAZ	
	CLAY DECOR PIPES AT GABLE ENDS	SW 6061 TANBARK	
	ANY METAL IRON DETAILS / RAILINGS / SHUTTERS HINGES	SW 6258 TRICORN BLACK if painted / Black by Manufacturer if powder coated	

STONE VENEER
SIERRA
WEATHER EDGE LEDGESTONE



Ashcroft at North Ranch * North Las Vegas, NV

Pulte Group

Exterior Color Scheme

9.9.19

7

To be used on
ALL Elevations

ROOF - 'B' - ELEVS ONLY



ROOF - 'A & C' - ELEVS ONLY



	STUCCO BODY	SW 7638 JOGGING PATH	
	FASCIA / EAVES / CORBELS	SW 6119 ANTIQUÉ WHITE	
	TRIM	SW 0023 PEWTER TANKARD	
	GARAGE DOORS	DESERT TAN	
	ENTRY DOORS / SHUTTERS	SW 6061 TANBARK	
	CLAY DECOR PIPES AT GABLE ENDS	SW 6061 TANBARK	
	ANY METAL IRON DETAILS / RAILINGS / SHUTTERS HINGES	SW 6258 TRICORN BLACK if painted / Black by Manufacturer if powder coated	

STONE VENEER
GREY DRIFT
COBBLE LEDGE



Ashcroft at North Ranch * North Las Vegas, NV

Pulte Group

Exterior Color Scheme

9.9.19

8

To be used on
ALL Elevations

ROOF - 'B' - ELEVS ONLY



ROOF - 'A & C' - ELEVS ONLY



	STUCCO BODY	SW 7503 STICKS & STONES	
	FASCIA / EAVES / CORBELS	SW 7575 CHOP STICKS	
	TRIM	SW 7037 BALANCED BEIGE	
	GARAGE DOORS	TAUPE	
	ENTRY DOORS / SHUTTERS	SW 6992 INKWELL	
	CLAY DECOR PIPES AT GABLE ENDS	SW 6061 TANBARK	
	ANY METAL IRON DETAILS / RAILINGS / SHUTTERS HINGES	SW 6258 TRICORN BLACK if painted / Black by Manufacturer if powder coated	

STONE VENEER
GREY DRIFT
COBBLE LEDGE



Ashcroft at North Ranch * North Las Vegas, NV

Pulte Group

Exterior Color Scheme

9.9.19

9

To be used on
ALL Elevations

ROOF - 'B' - ELEVS ONLY

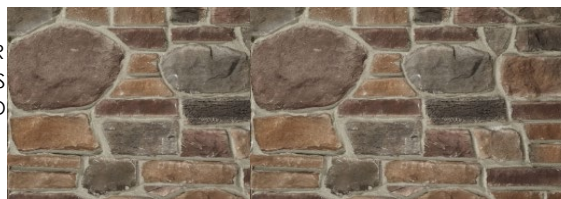


ROOF - 'A & C' - ELEVS ONLY



	STUCCO BODY	SW 7535 SANDY RIDGE	
	FASCIA / EAVES / CORBELS	SW 7035 AESTHETIC WHITE	
	TRIM	SW 7532 URBAN PUTTY	
	GARAGE DOORS	DESERT TAN	
	ENTRY DOORS / SHUTTERS	SW 2803 ROOKWOOD TERRACOTTA	
	CLAY DECOR PIPES AT GABLE ENDS	SW 6061 TANBARK	
	ANY METAL IRON DETAILS / RAILINGS / SHUTTERS HINGES	SW 6258 TRICORN BLACK if painted / Black by Manufacturer if powder coated	

STONE VENEER
CHABLIS
BAYOU BLEND



Ashcroft

North Ranch - North Las Vegas, NV
Single Family Homes




Series 3000

for

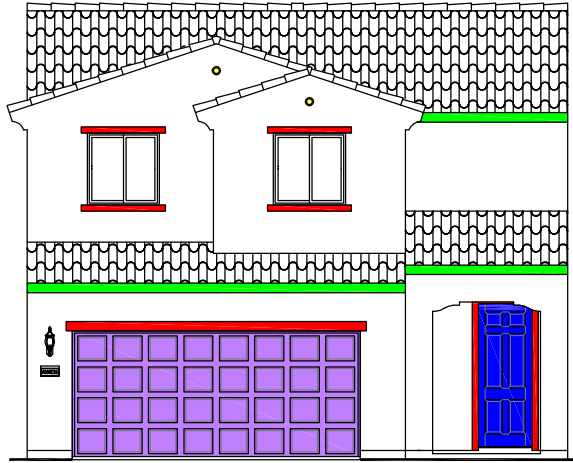


Elevations designed by
Internal Architect

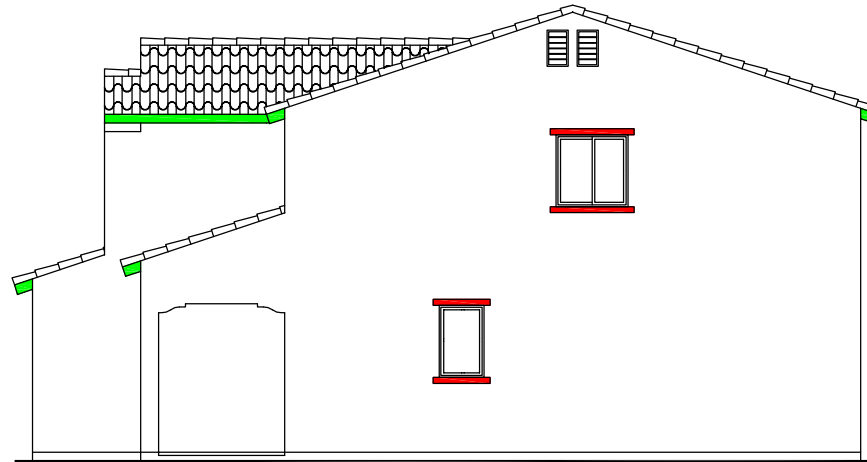
 Michelle Bridges
Architectural Colors, Inc.

9.9.19

NOTE: All photographs of stone, brick, masonry and roof tiles are for representation only - See actual samples for exact colors.
MBACi not responsible for manufacturer color printed materials being off from actual materials.



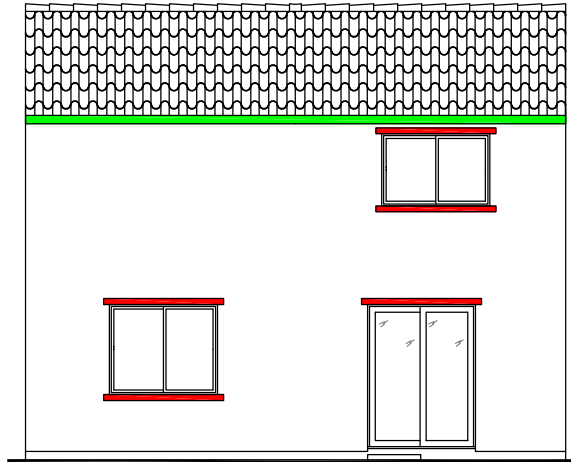
FRONT ELEVATION 'A'



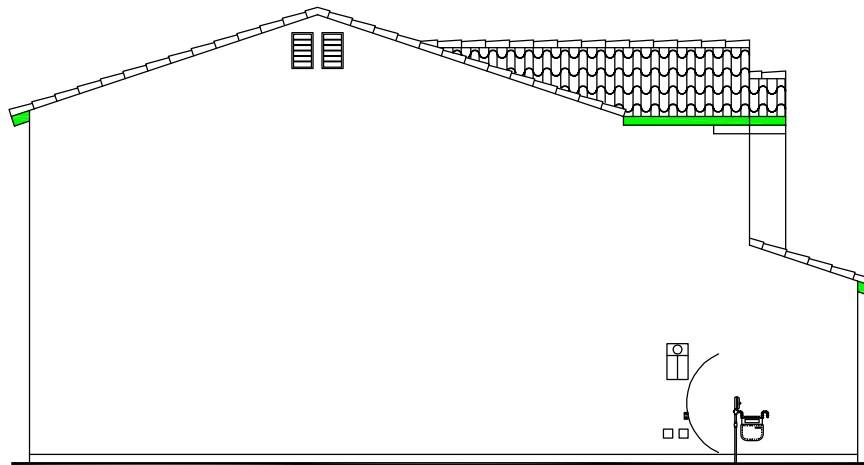
RIGHT ELEVATION 'A'

PLAN 3019-2
Elevation A





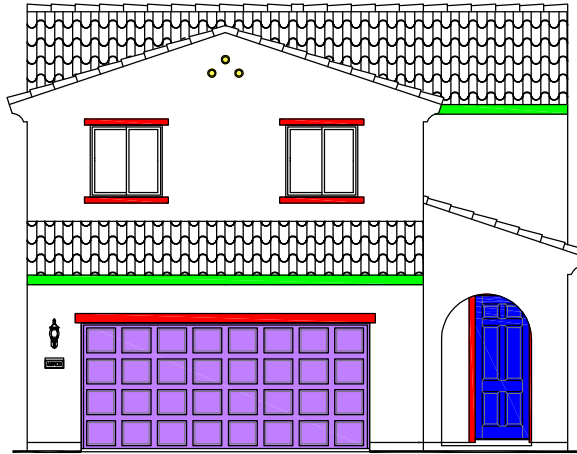
REAR ELEVATION 'A'



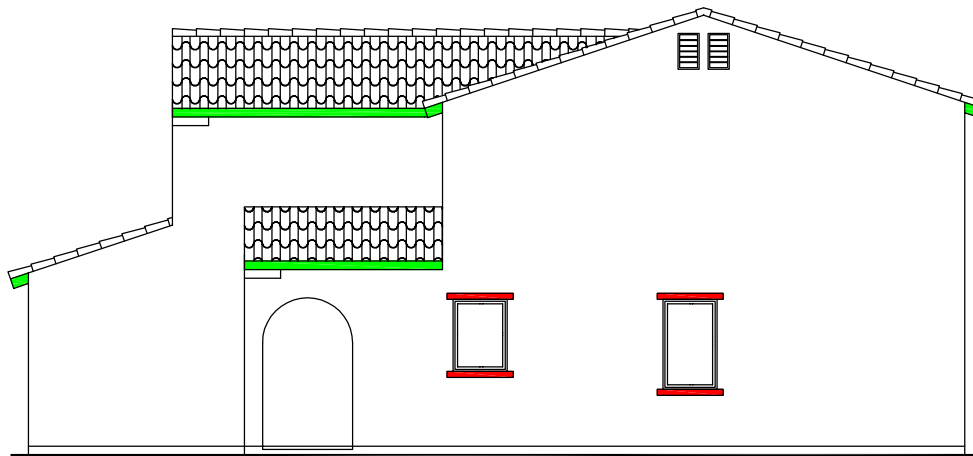
LEFT ELEVATION 'A'

PLAN 3019-2
Elevation A





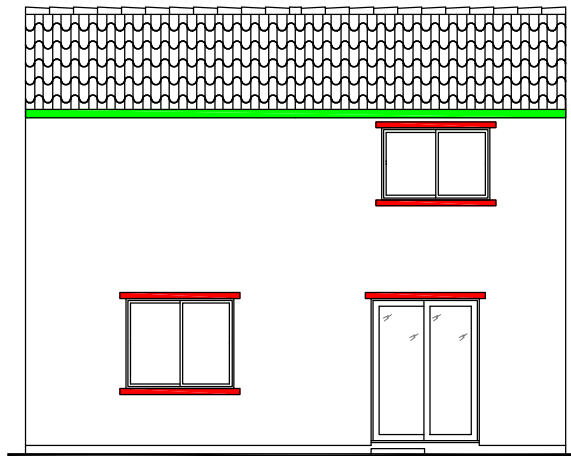
FRONT ELEVATION 'A'



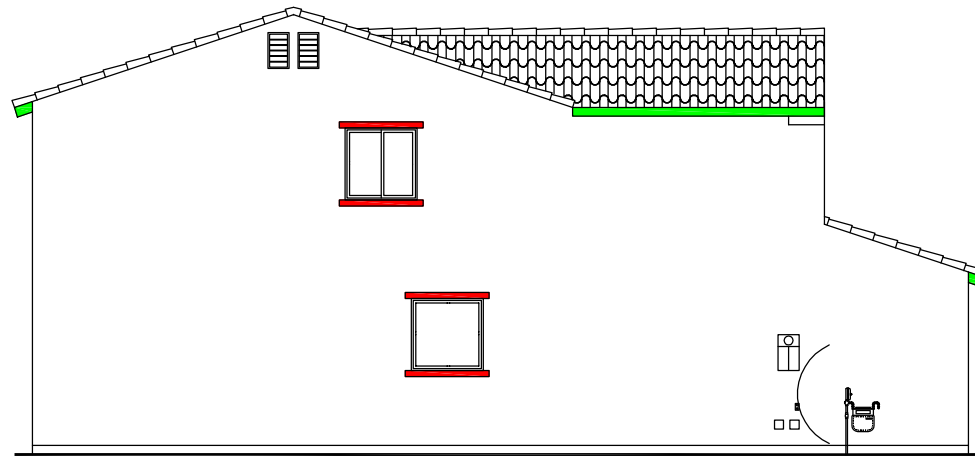
RIGHT ELEVATION 'A'

PLAN 3021-2
Elevation A





REAR ELEVATION 'A'



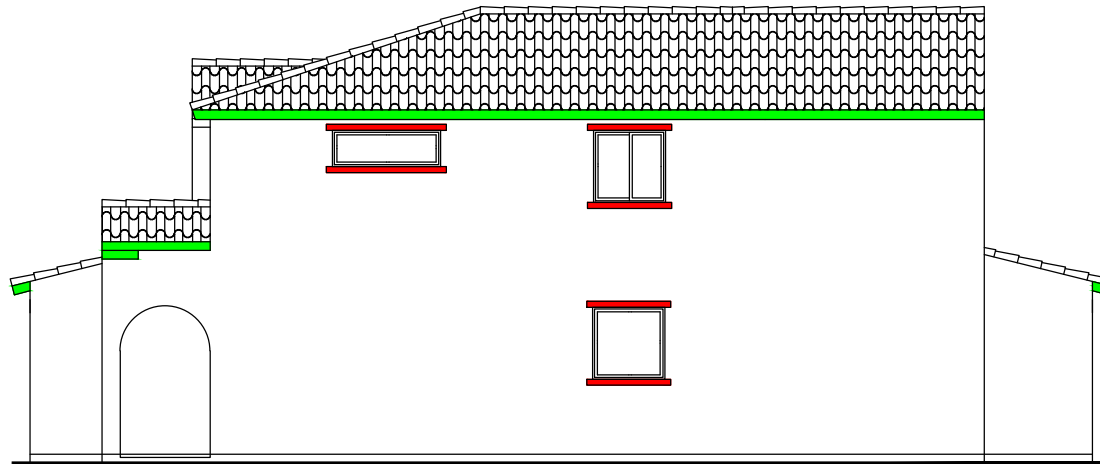
LEFT ELEVATION 'A'

PLAN 3021-2
Elevation A





FRONT ELEVATION 'A'



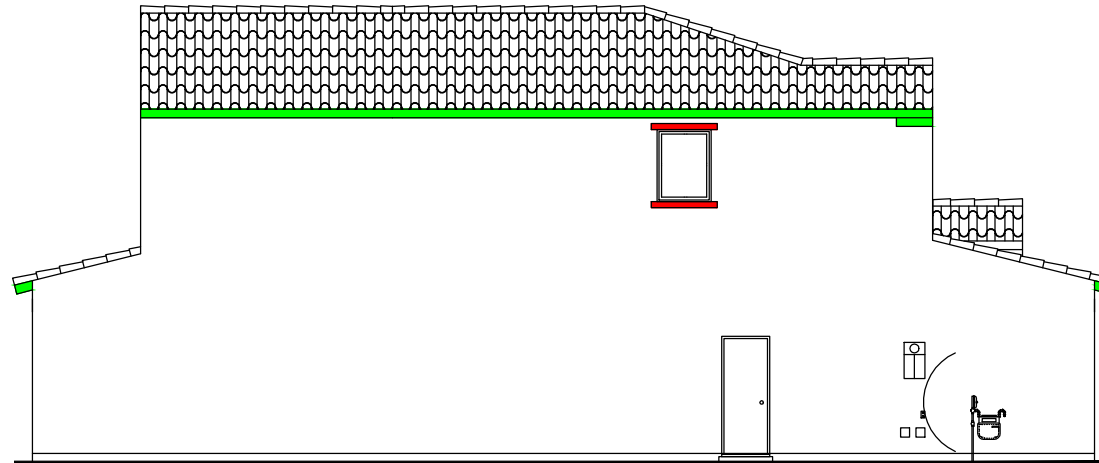
RIGHT ELEVATION 'A'

PLAN 3023-5
Elevation A





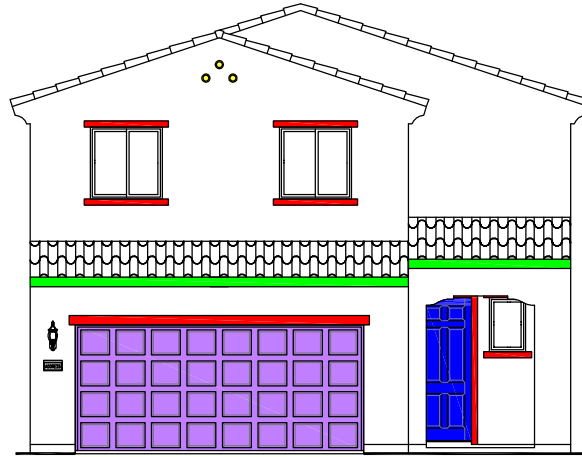
REAR ELEVATION 'A'



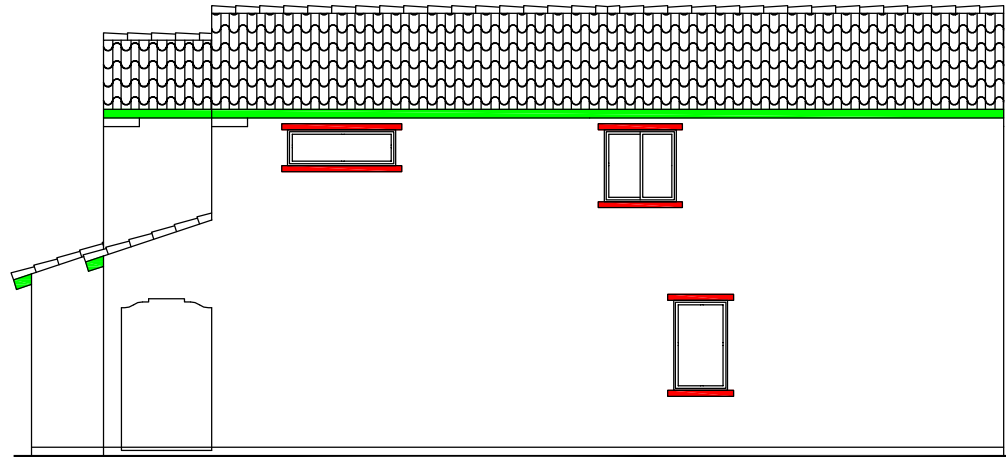
LEFT ELEVATION 'A'



PLAN 3023-5
Elevation A



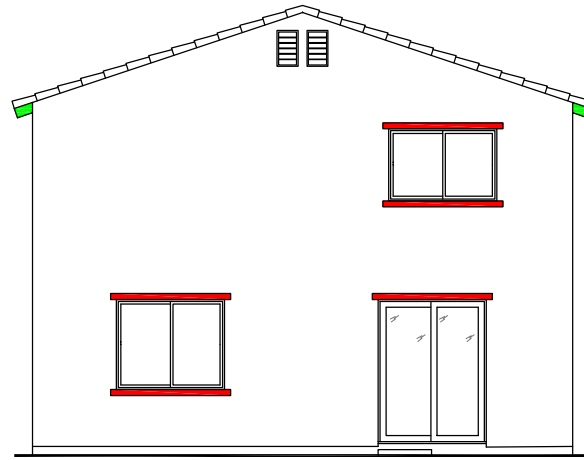
FRONT ELEVATION 'A'



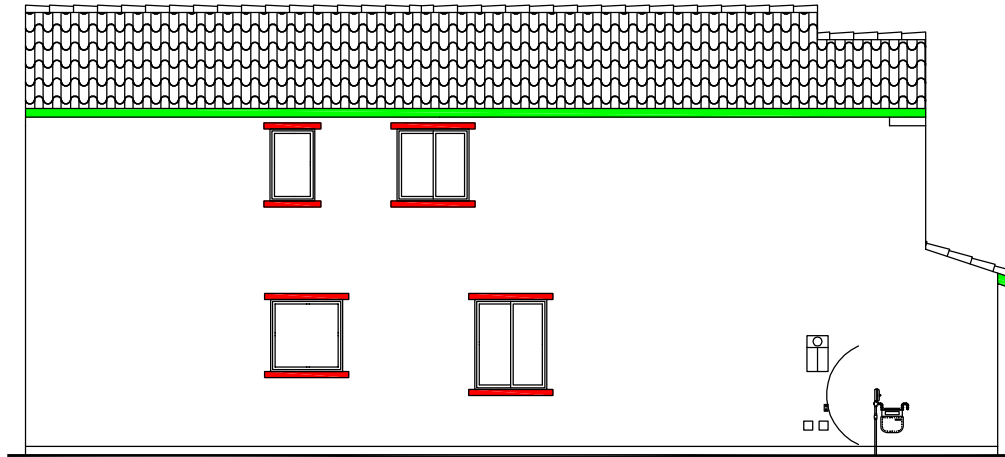
RIGHT ELEVATION 'A'

PLAN 3024-2
Elevation A





REAR ELEVATION 'A'



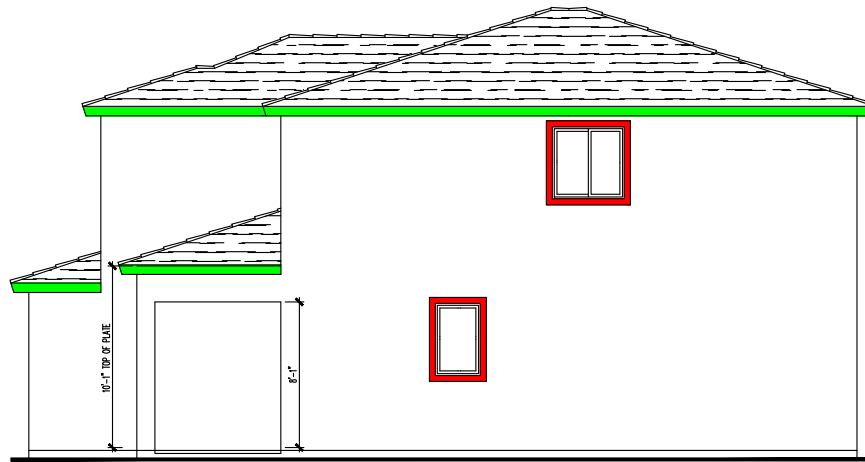
LEFT ELEVATION 'A'

PLAN 3024-2
Elevation A





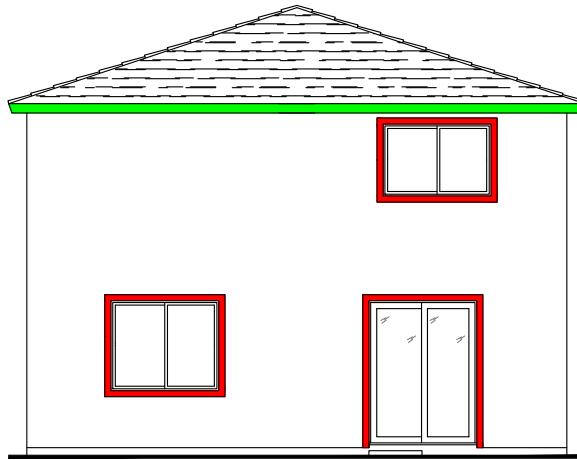
FRONT ELEVATION 'B'



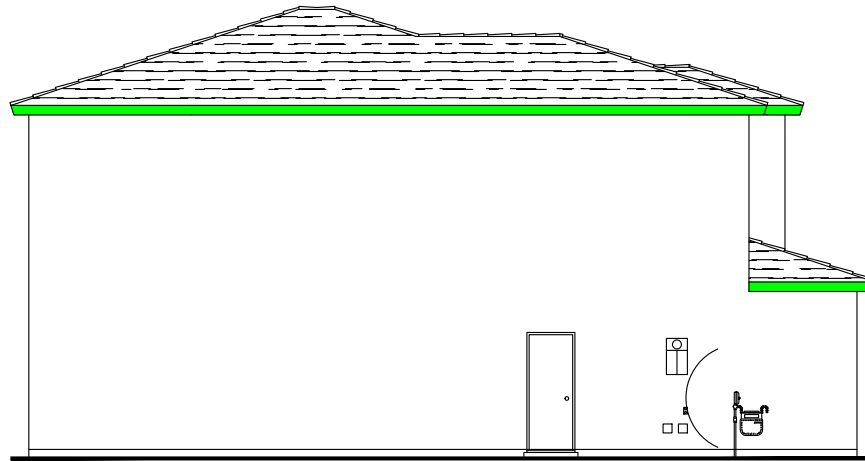
RIGHT ELEVATION 'B'

PLAN 3019-2
Elevation B





REAR ELEVATION 'B'



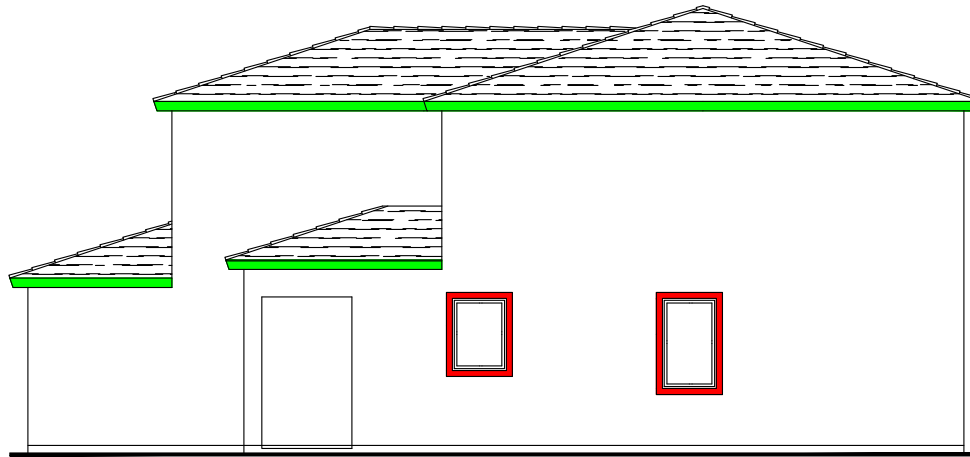
LEFT ELEVATION 'B'

PLAN 3019-2
Elevation B





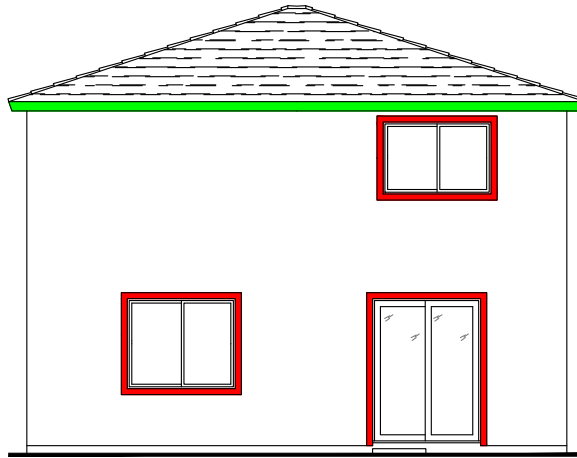
FRONT ELEVATION 'B'



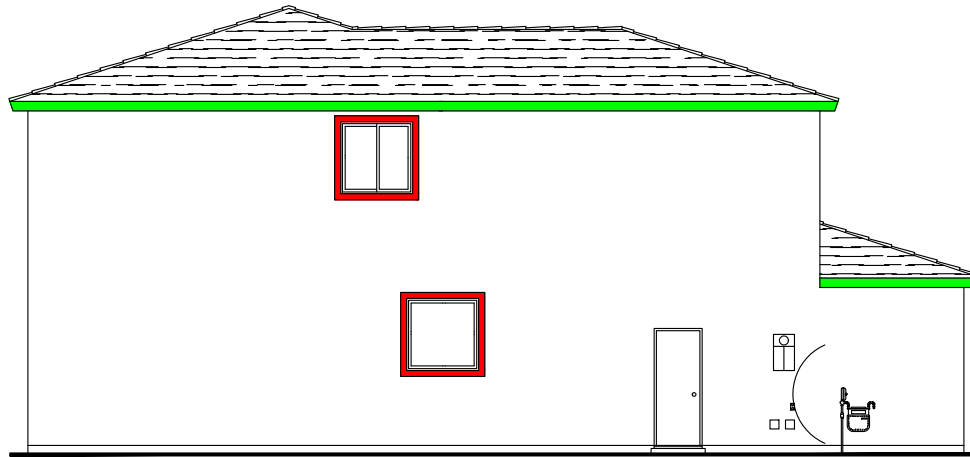
RIGHT ELEVATION 'B'

PLAN 3021-2
Elevation B





REAR ELEVATION 'B'



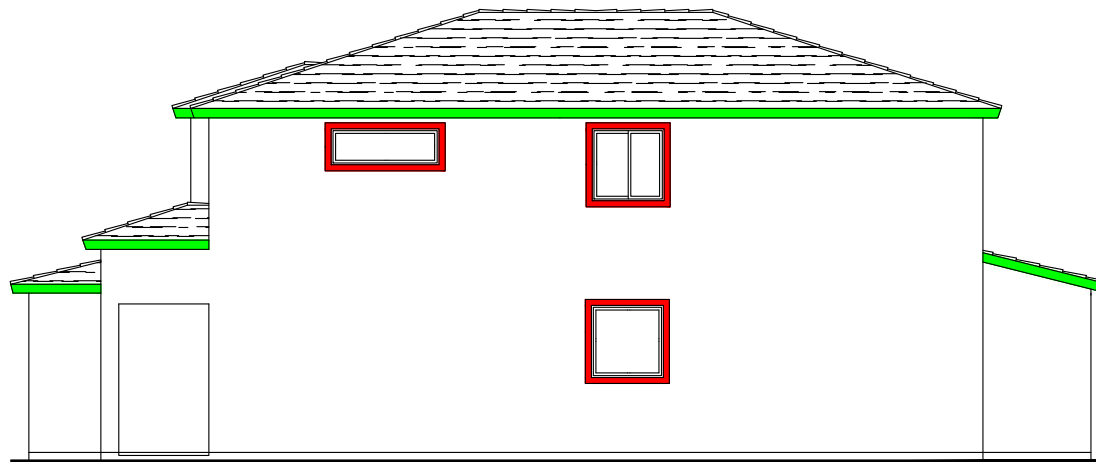
LEFT ELEVATION 'B'

PLAN 3021-2
Elevation B





FRONT ELEVATION 'B'



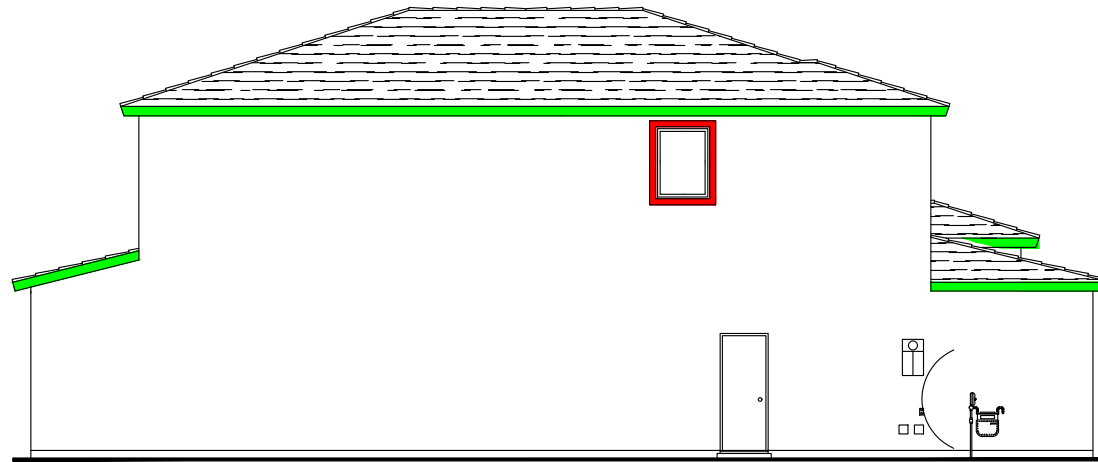
RIGHT ELEVATION 'B'

PLAN 3023-5
Elevation B





REAR ELEVATION 'B'



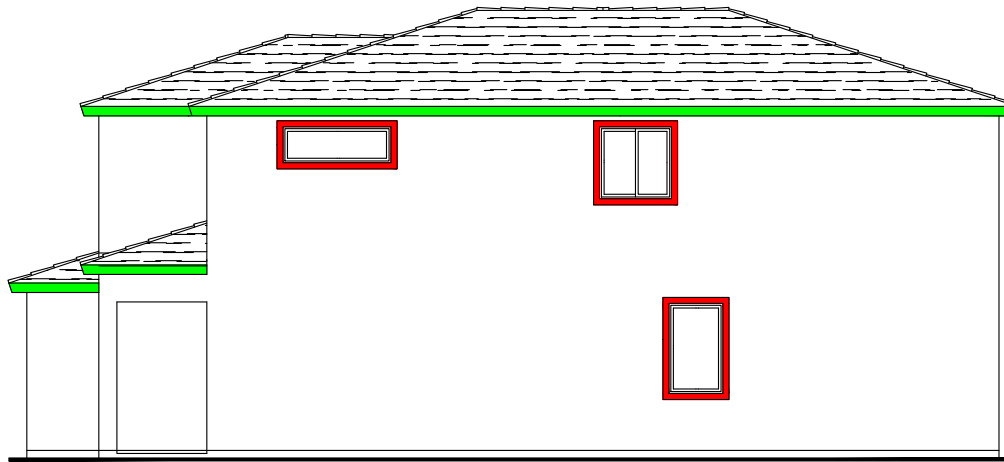
LEFT ELEVATION 'B'

PLAN 3023-5
Elevation B





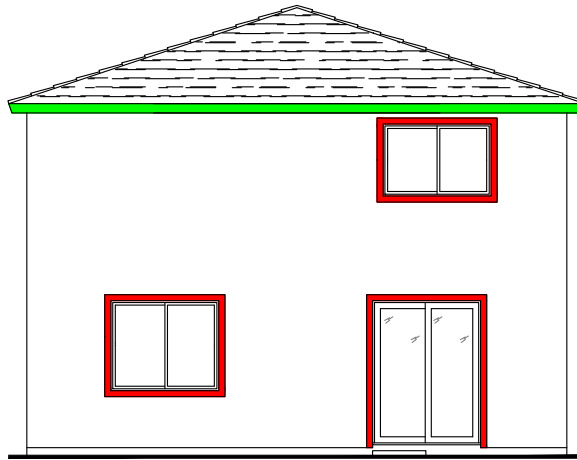
FRONT ELEVATION 'B'



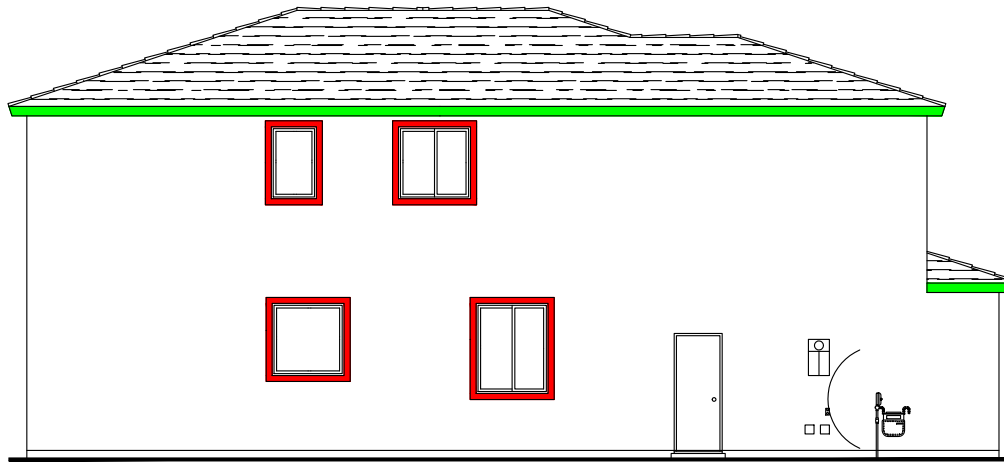
RIGHT ELEVATION 'B'

PLAN 3024-2
Elevation B





REAR ELEVATION 'B'



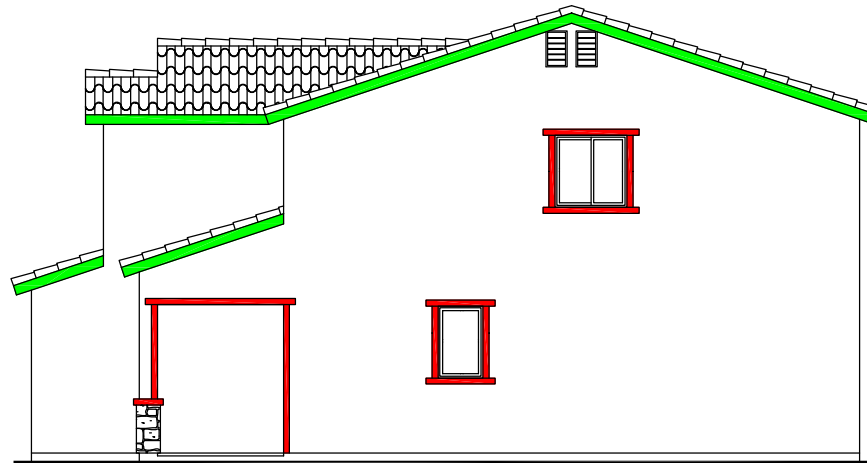
LEFT ELEVATION 'B'

PLAN 3024-2
Elevation B





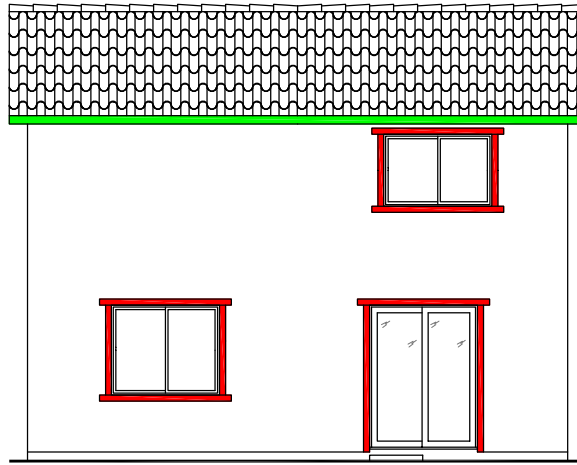
FRONT ELEVATION 'C'



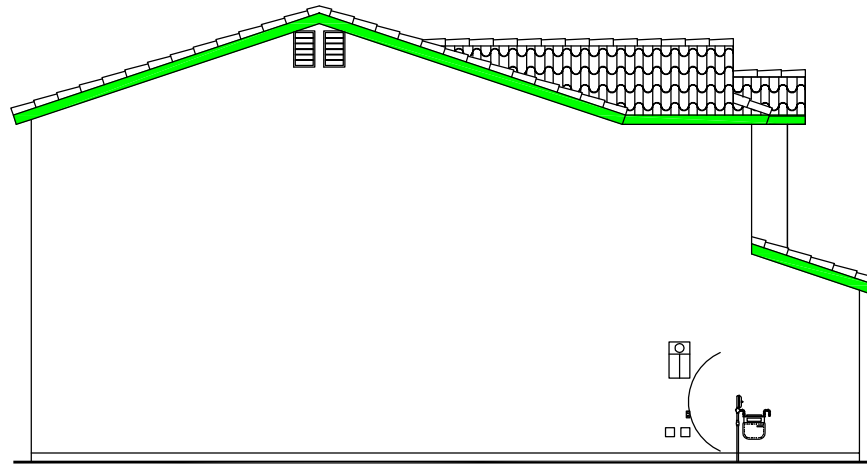
RIGHT ELEVATION 'C'

PLAN 3019-2
Elevation C





REAR ELEVATION 'C'



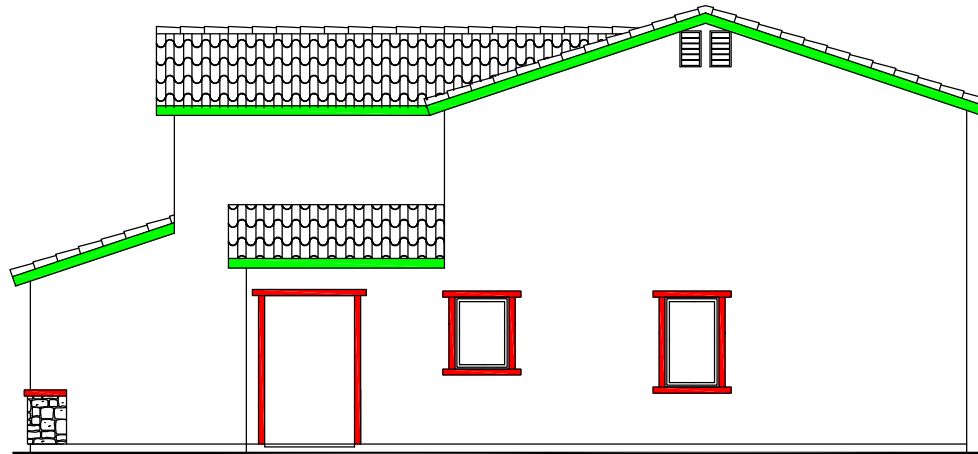
LEFT ELEVATION 'C'

PLAN 3019-2
Elevation C





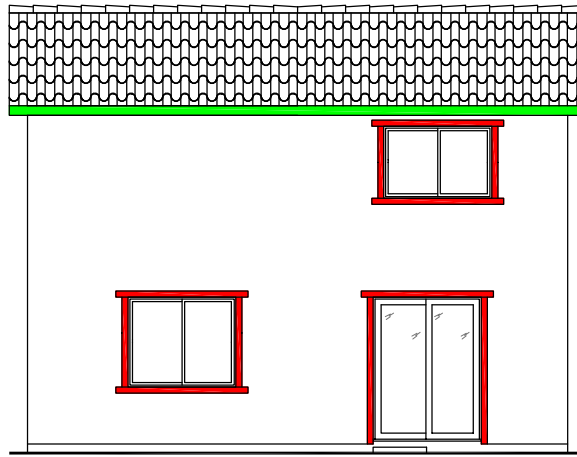
FRONT ELEVATION 'C'



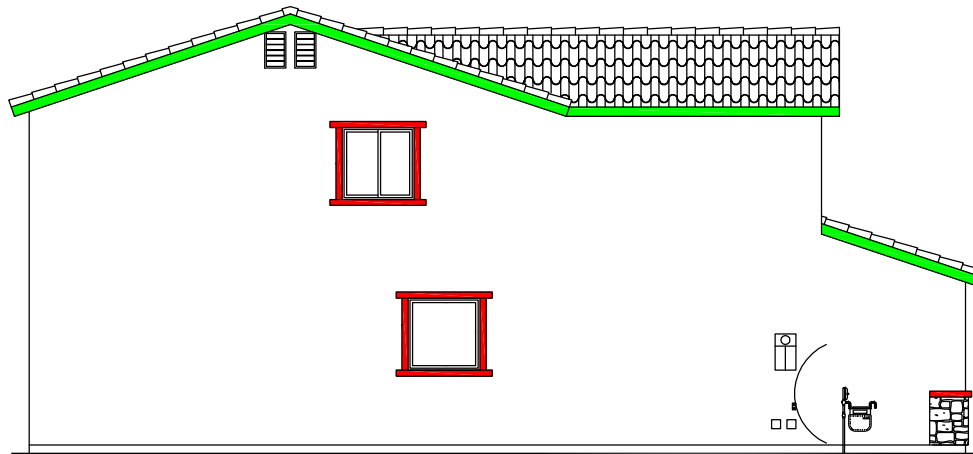
RIGHT ELEVATION 'C'

PLAN 3021-2
Elevation C





REAR ELEVATION 'C'



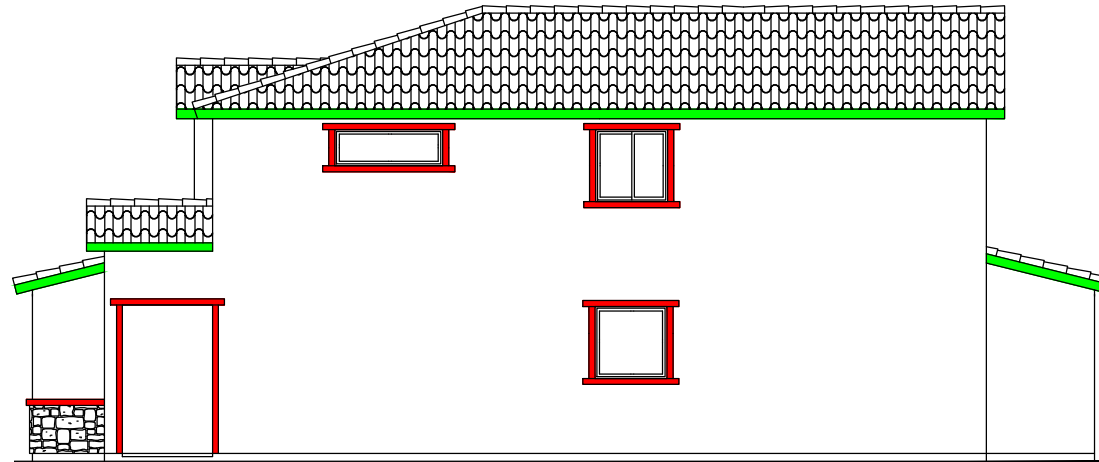
LEFT ELEVATION 'C'

PLAN 3021-2
Elevation C





FRONT ELEVATION 'C'



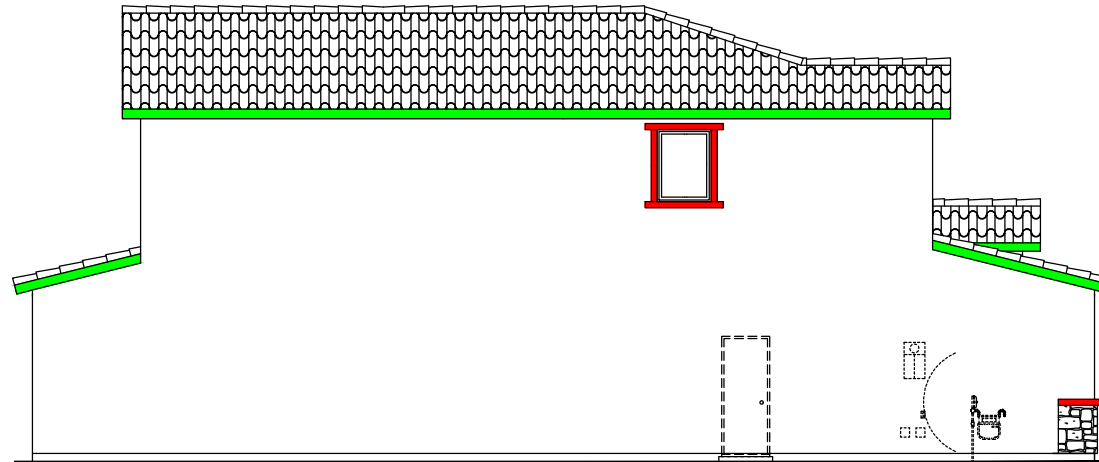
RIGHT ELEVATION 'C'



PLAN 3023-5
Elevation C



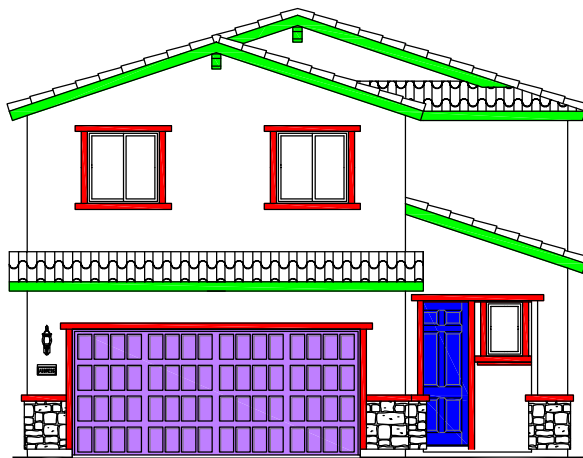
REAR ELEVATION 'C'



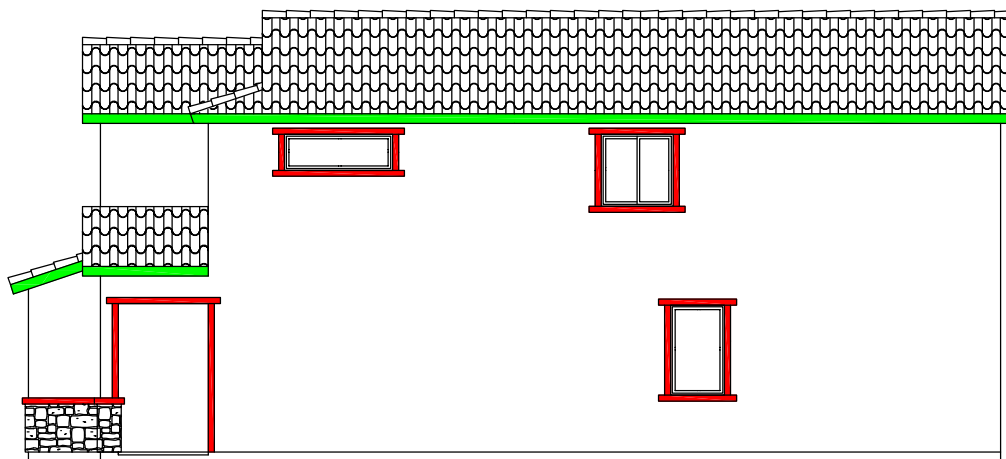
LEFT ELEVATION 'C'



PLAN 3023-5
Elevation C



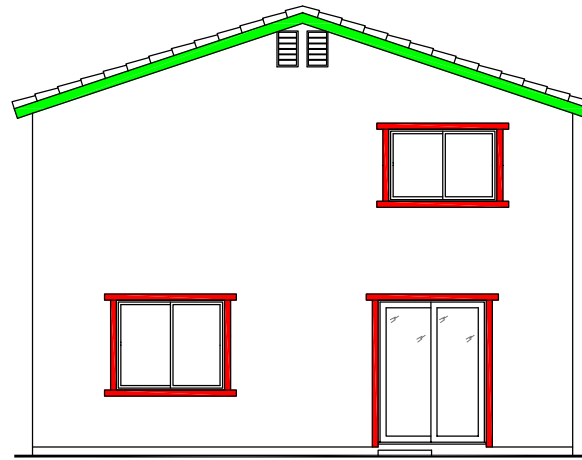
FRONT ELEVATION 'C'



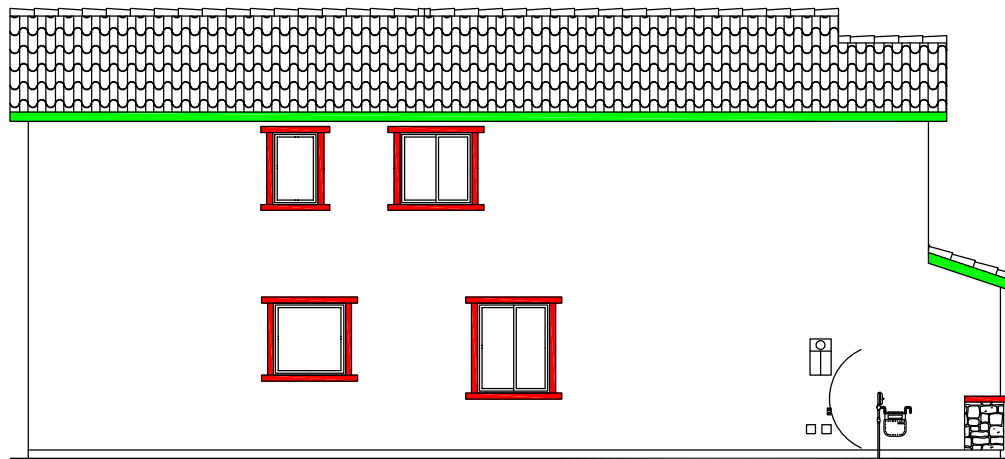
RIGHT ELEVATION 'C'



PLAN 3024-2
Elevation C



REAR ELEVATION 'C'



LEFT ELEVATION 'C'

PLAN 3024-2
Elevation C



Ashcroft

North Ranch - North Las Vegas, NV
Single Family Homes




Series 3500

for

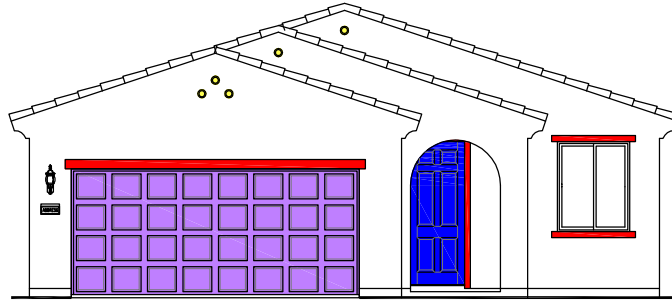


Elevations designed by
Internal Architect

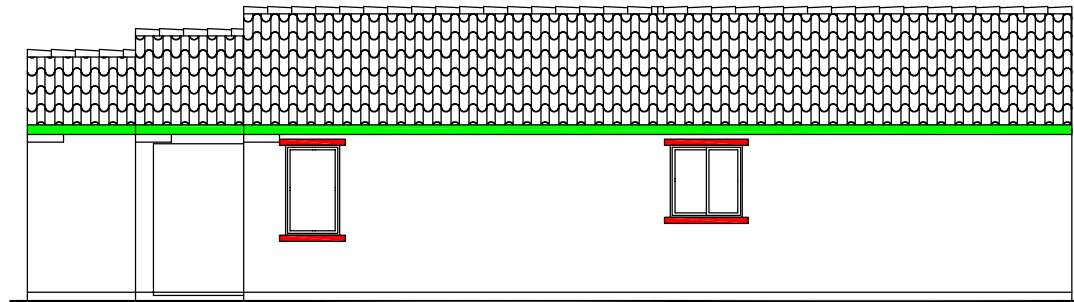
 Michelle Bridges
Architectural Colors, Inc.

9.9.19

NOTE: All photographs of stone, brick, masonry and roof tiles are for representation only - See actual samples for exact colors.
MBACi not responsible for manufacturer color printed materials being off from actual materials.



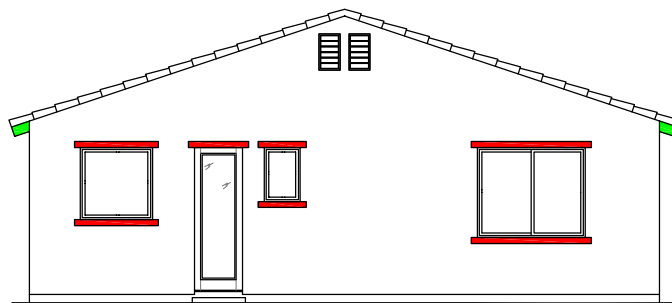
FRONT ELEVATION 'A'



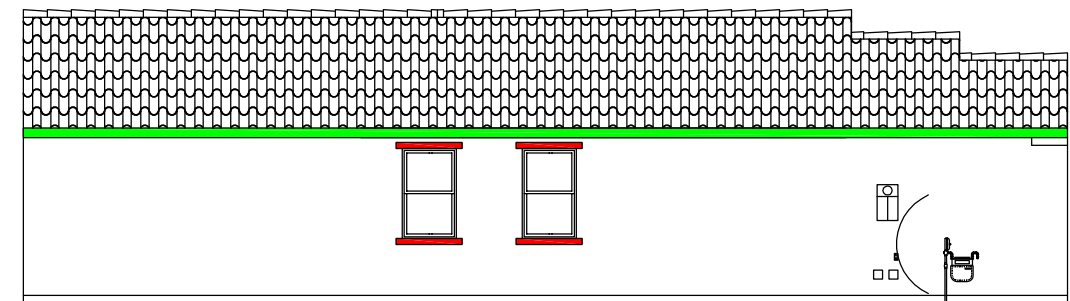
RIGHT ELEVATION 'A'

PLAN 3514-1
Elevation A





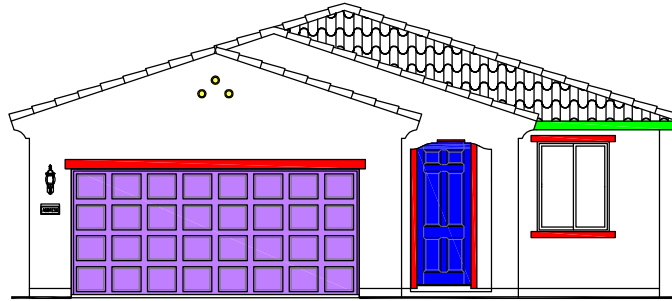
REAR ELEVATION 'A'



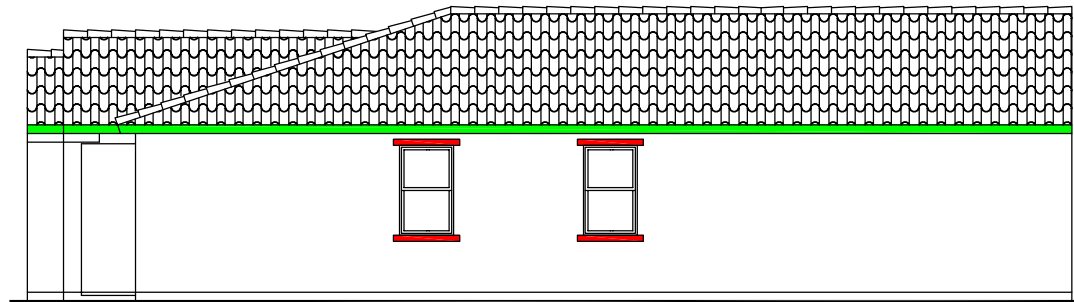
LEFT ELEVATION 'A'

PLAN 3514-1
Elevation A





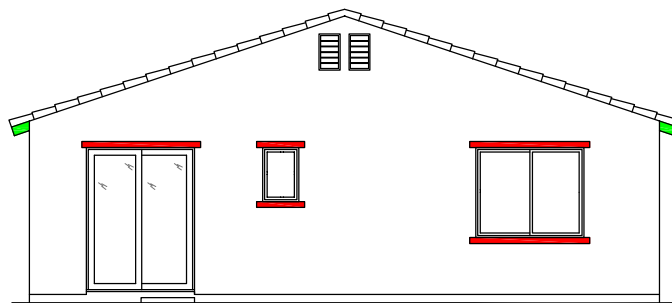
FRONT ELEVATION 'A'



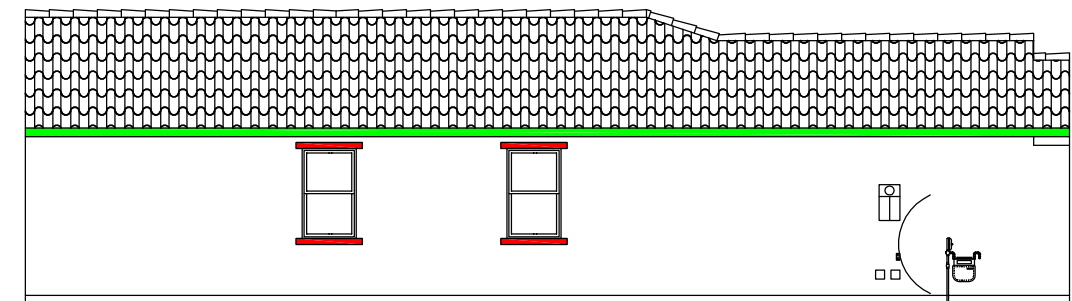
RIGHT ELEVATION 'A'

PLAN 3515-1
Elevation A





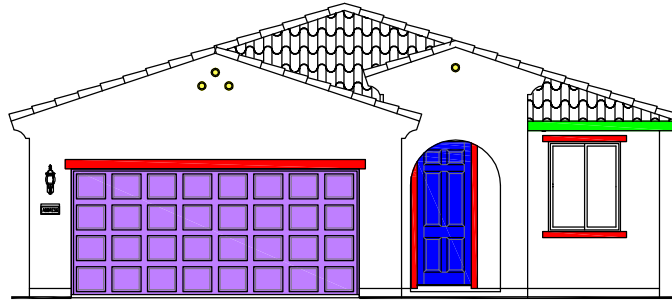
REAR ELEVATION 'A'



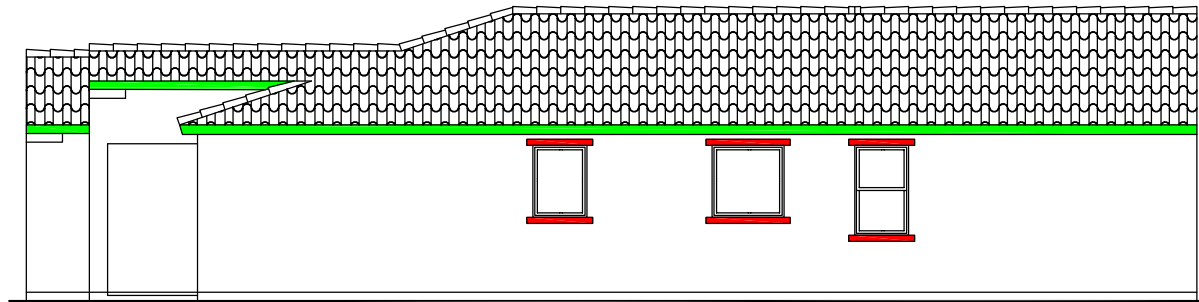
LEFT ELEVATION 'A'

PLAN 3515-1
Elevation A





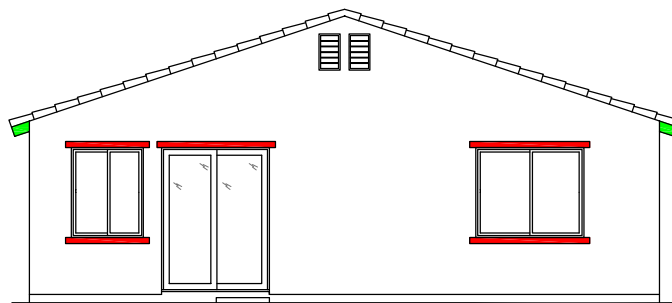
FRONT ELEVATION 'A'



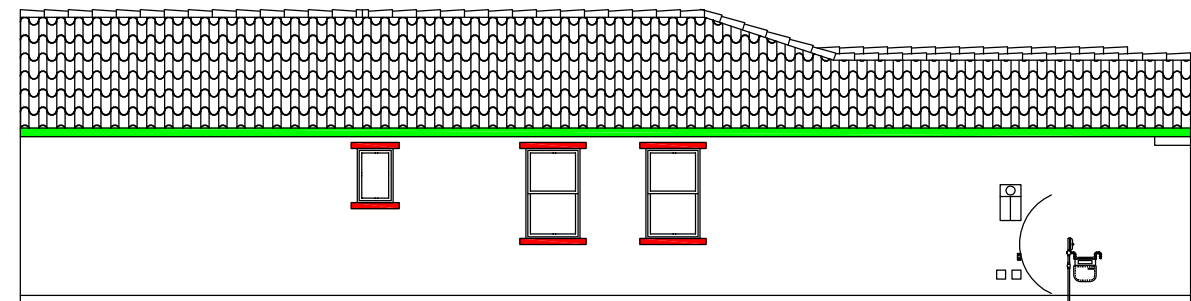
RIGHT ELEVATION 'A'

PLAN 3517-1
Elevation A





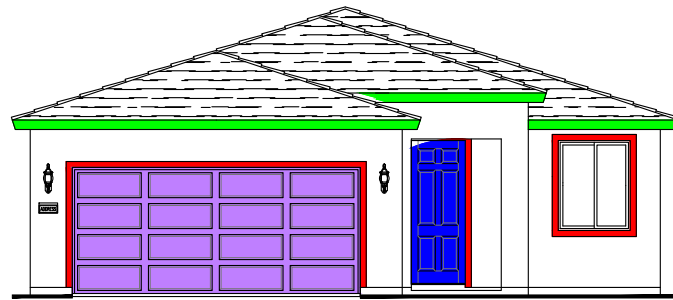
REAR ELEVATION 'A'



LEFT ELEVATION 'A'

PLAN 3517-1
Elevation A

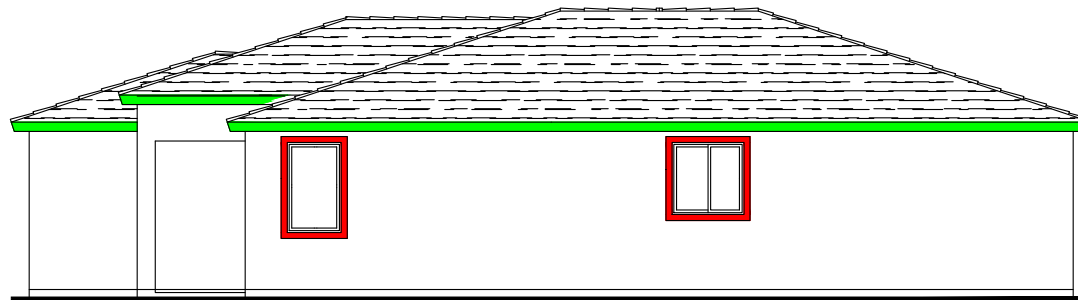




FRONT ELEVATION 'B'

SCALE: 1/4" = 1'-0"

ITALIAN



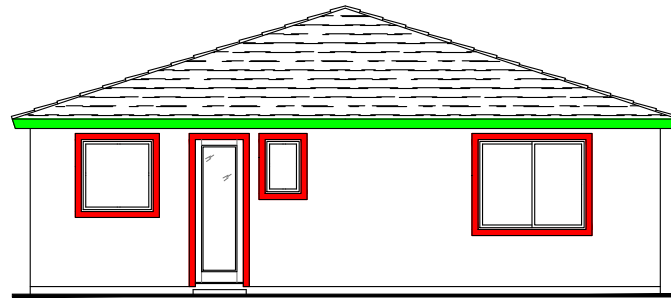
RIGHT ELEVATION 'B'

SCALE: 1/4" = 1'-0"

ITALIAN



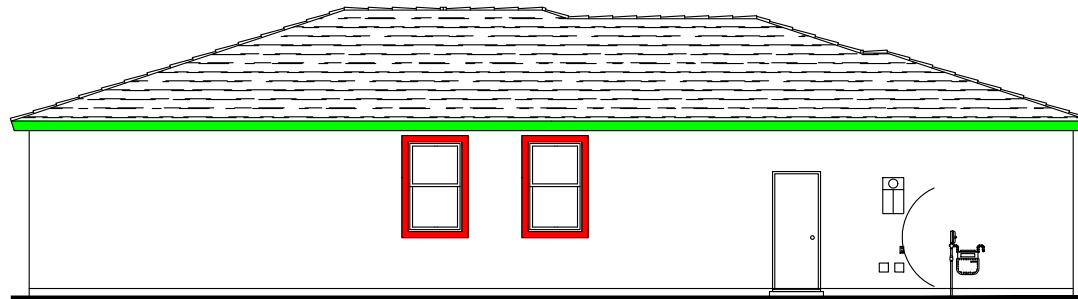
PLAN 3514-1
Elevation B



REAR ELEVATION 'B'

SCALE: 1/4" = 1'-0"

ITALIAN



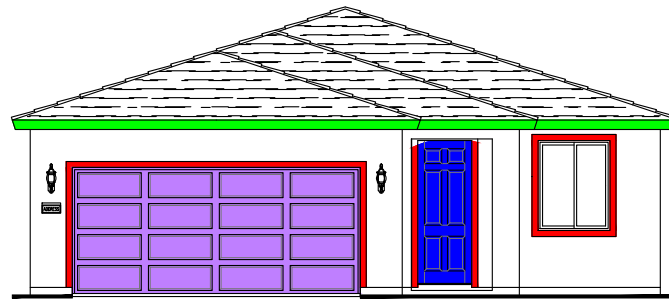
LEFT ELEVATION 'B'

SCALE: 1/4" = 1'-0"

ITALIAN



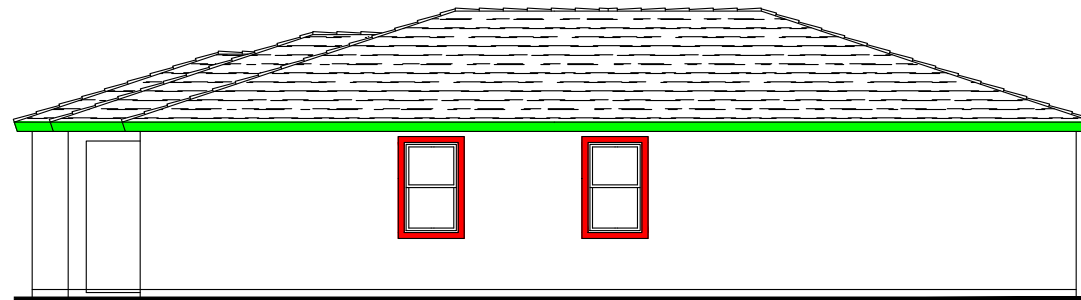
PLAN 3514-1
Elevation B



FRONT ELEVATION 'B'

SCALE: 1/4" = 1'-0"

ITALIAN



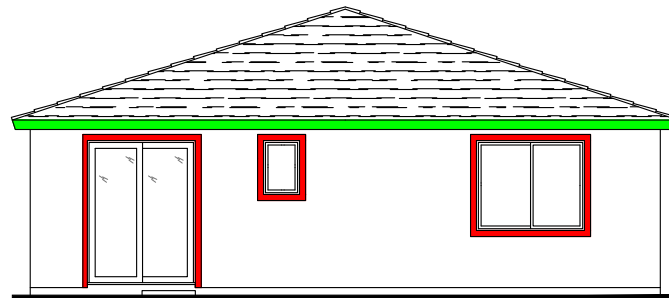
RIGHT ELEVATION 'B'

SCALE: 1/4" = 1'-0"

ITALIAN



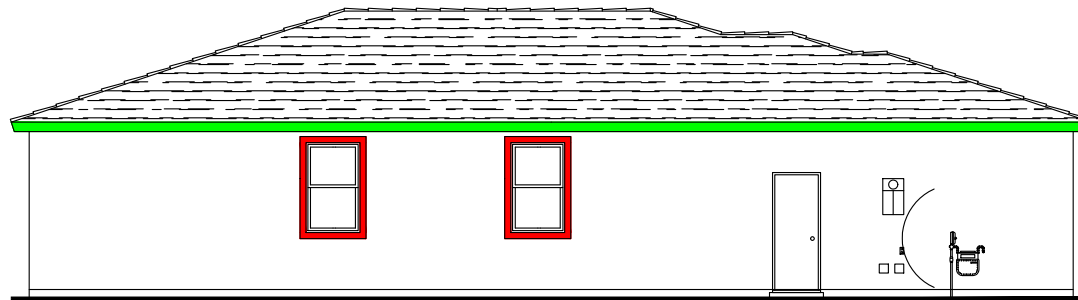
PLAN 3515-1
Elevation B



REAR ELEVATION B'

SCALE: 1/4" = 1'-0"

ITALIAN



LEFT ELEVATION B'

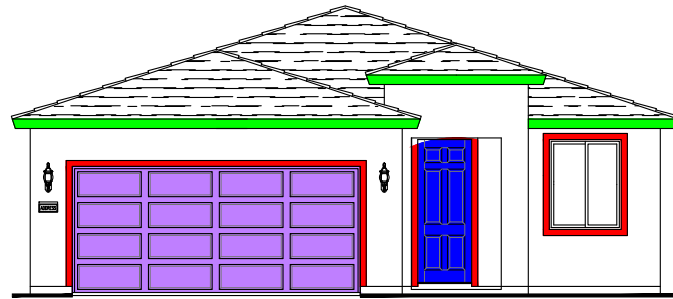
SCALE: 1/4" = 1'-0"

ITALIAN

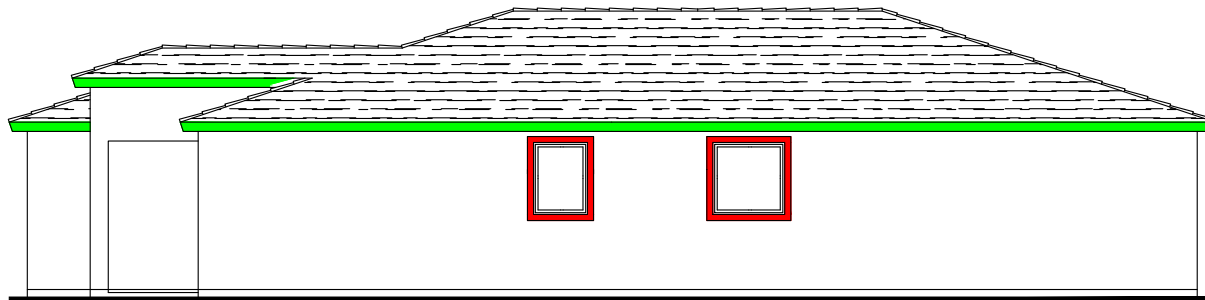


PLAN 3515-1

Elevation B



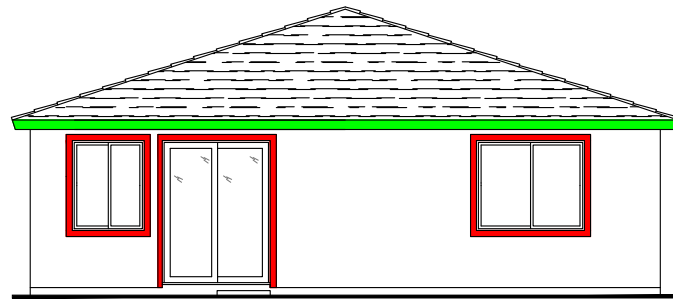
FRONT ELEVATION 'B'



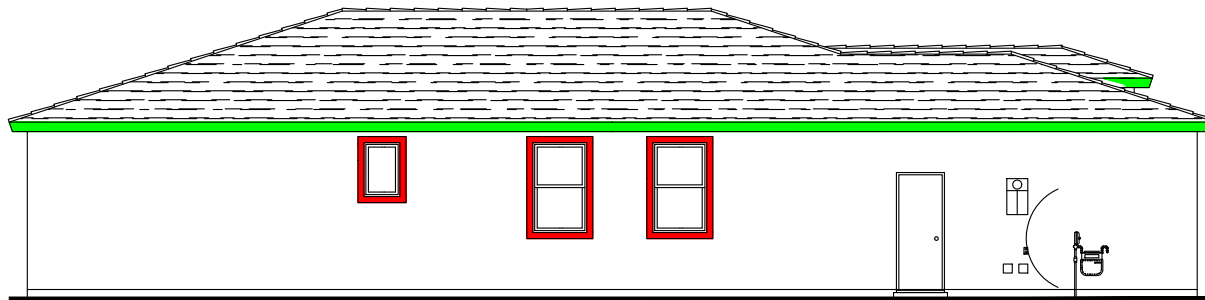
RIGHT ELEVATION 'B'



PLAN 3517-1
Elevation B



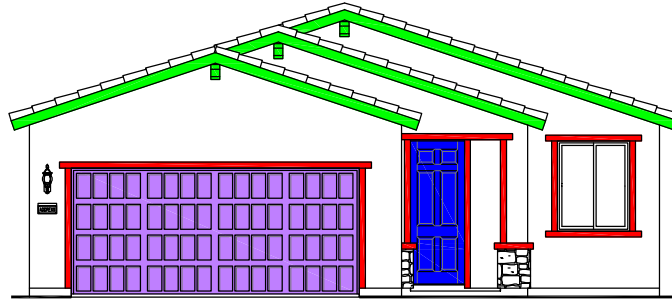
REAR ELEVATION 'B'



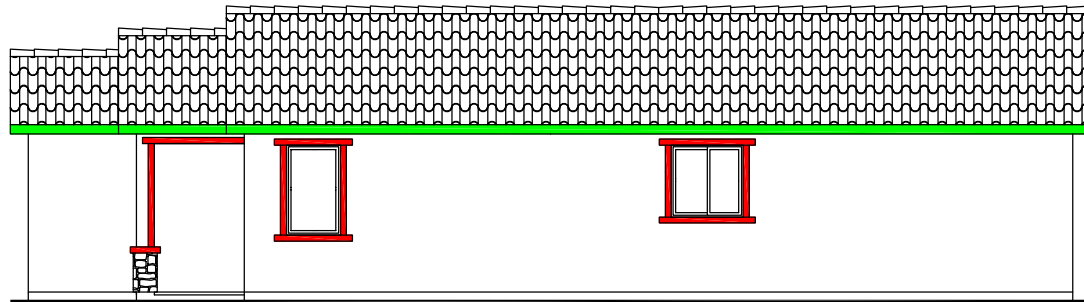
LEFT ELEVATION 'B'



PLAN 3517-1
Elevation B



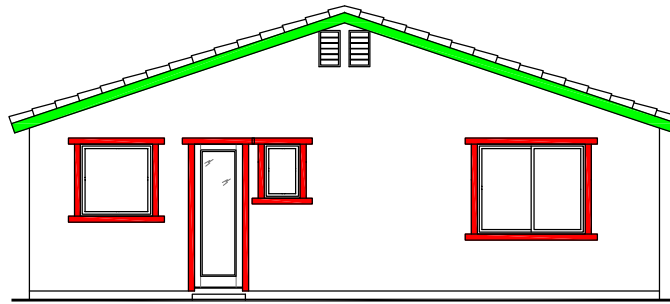
FRONT ELEVATION 'C'



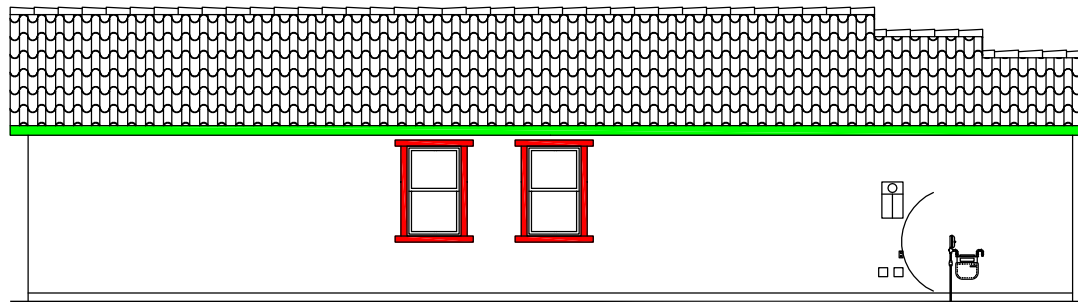
RIGHT ELEVATION 'C'

PLAN 3514-1
Elevation C





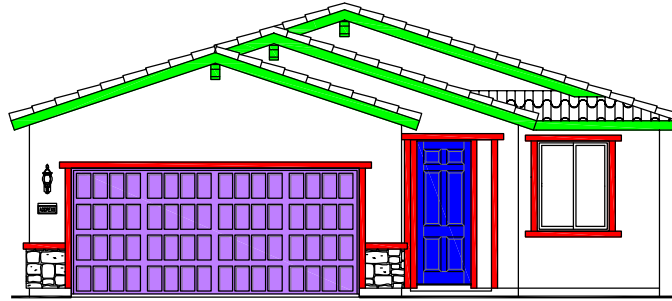
REAR ELEVATION 'C'



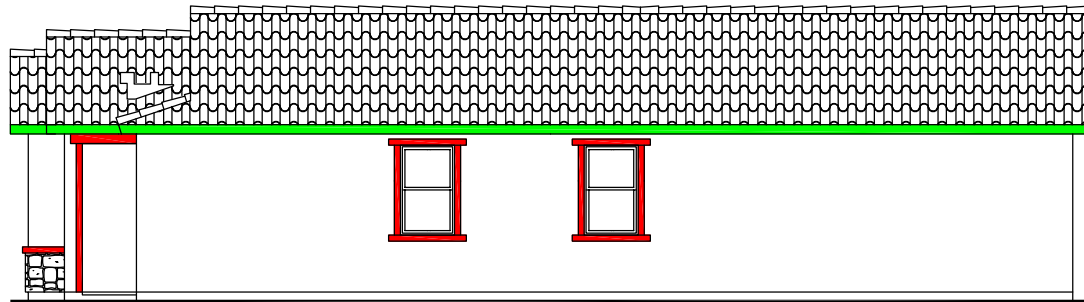
LEFT ELEVATION 'C'

PLAN 3514-1
Elevation C





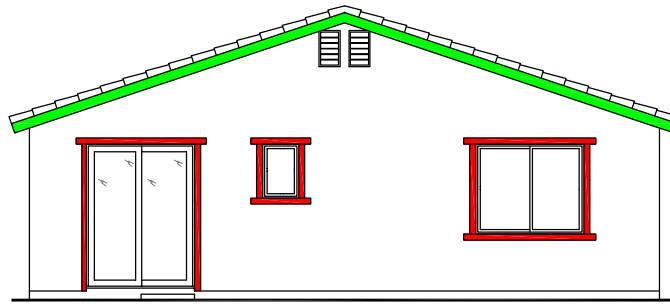
FRONT ELEVATION 'C'



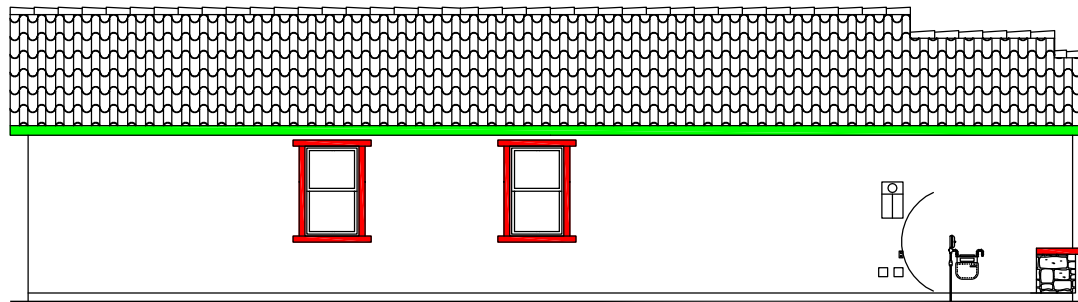
RIGHT ELEVATION 'C'

PLAN 3515-1
Elevation C





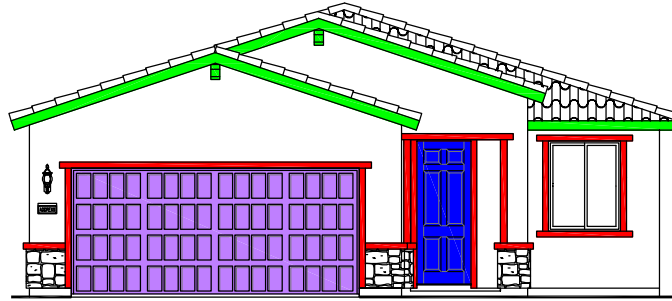
REAR ELEVATION 'C'



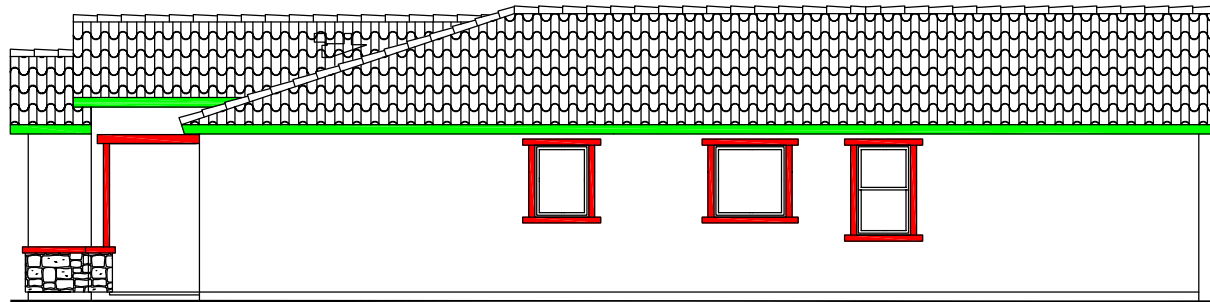
LEFT ELEVATION 'C'

PLAN 3515-1
Elevation C





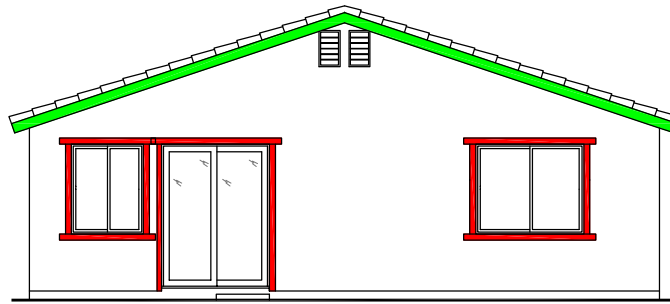
FRONT ELEVATION 'C'



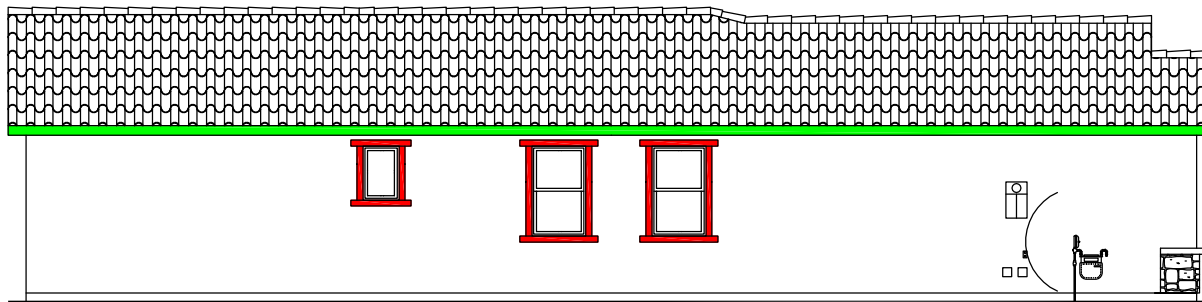
RIGHT ELEVATION 'C'

PLAN 3517-1
Elevation C





REAR ELEVATION 'C'



LEFT ELEVATION 'C'

PLAN 3517-1
Elevation C

