



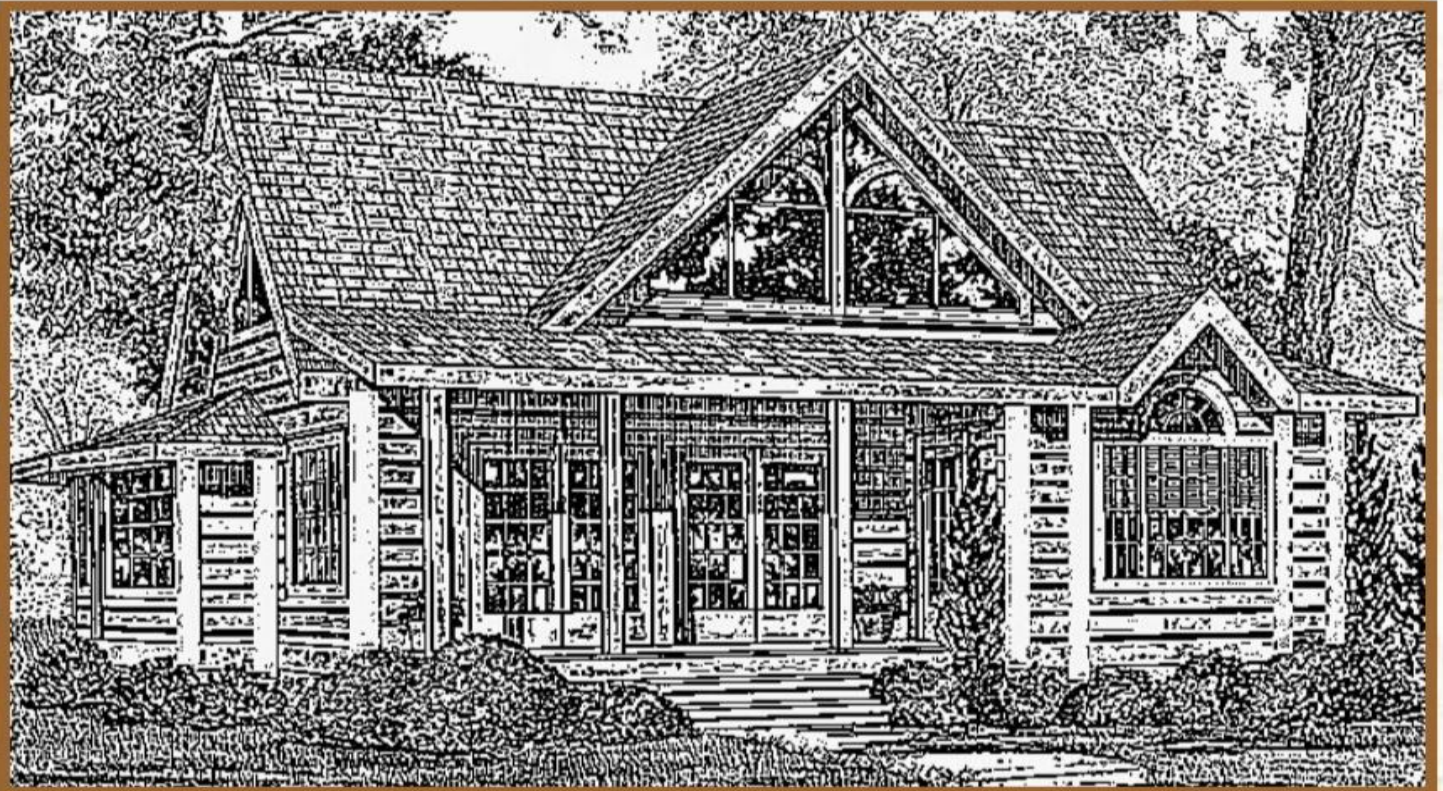
HEARTLAND TIMBER HOMES

"More than a home...an heirloom"

Country Living

Mountain Series

Murdock



Lodgepole Pine

**YOU HAVE THE CHOICE
DO-IT-YOUR SELF BUILDING.**

or

**A QUALIFIED BUILDING CONTRACTOR TO BUILD YOUR
BUILDING FOR YOU.**

We have substituted precision-milled components for skilled labor.

Hence our, “adult-lego” building kit.

**Timbers Manufactured from
Dead Standing Western Red Cedar Trees
(Fire Killed or Died Naturally)**

Murdock Details

Two Story, 1,449 Square Feet, Width 39 ft,- 10 in. Depth 39 ft,- 8 in. Crawlspace/Slab.

2 Bedrooms:

1) Master Bedroom, Main Floor, 13 ft. – 0 in. x 16 ft. – 4 in., with walk-in closet.

2) Second Bedroom, Second Floor, 12 ft. – 11 in. x 15 ft. – 1 in.

2 1/2 Bathrooms:

1) Master Bathroom , ensuite, 3 piece, with walk-in closet.

2) Second Floor Bathroom, 4 piece, ensuite.

3) Third Bathroom, 2 piece, of foyer.

Great Room: 19 ft.– 9 in. x 12 ft. – 4 in., with Fireplace.

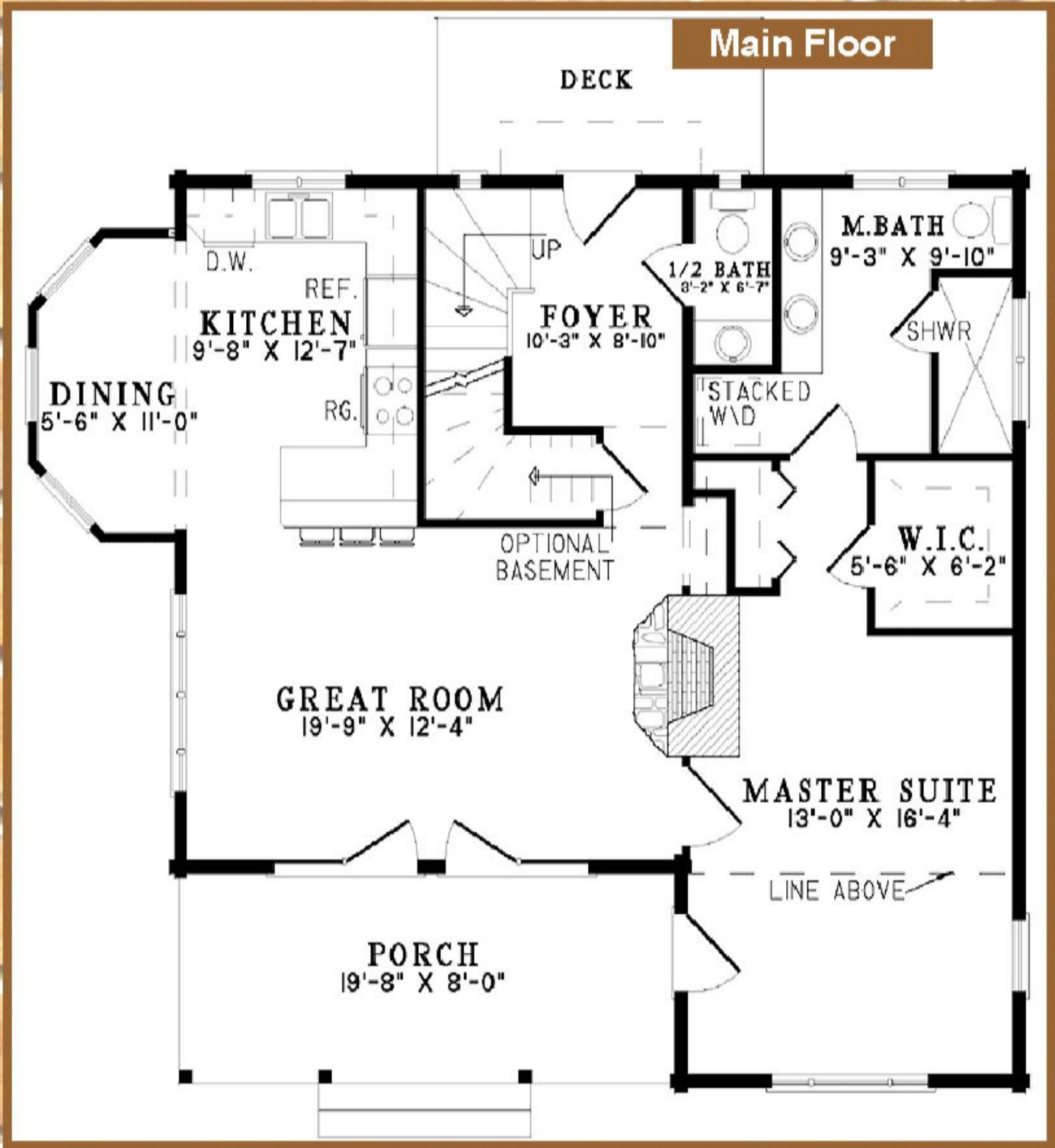
Laundry Closet: Main Floor.

Kitchen: 9 ft.– 8 in. x 12 ft.. – 7 in.

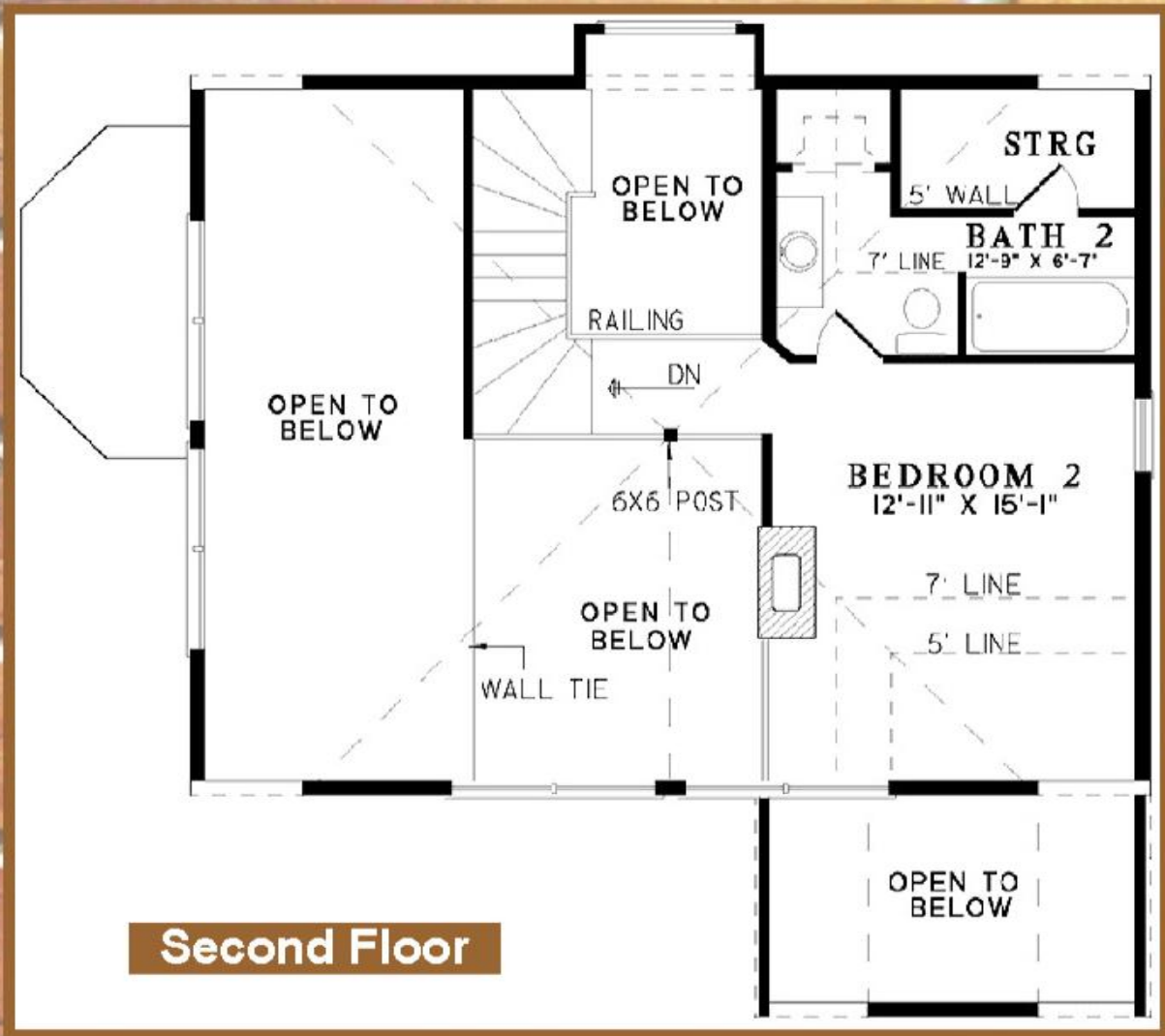
Dining Room: 5 ft, - 6 in. x 11 ft, - 0 in.

Front Porch: 19 ft, - 8 in. x 8 ft, - 0 in.

**The soul of Heartland Timber Frame Home living is Heritage,
Authenticity, Graciousness, Romance, Value and Comfort.**



Timbers Manufactured from Dead Standing Lodgepole Pine



All images used are for illustrative purposes only. Individual designs and features such as door, windows, roofing, timbers and other materials may vary. Floor plans are intended to give a general indication of the proposed floor layout only.



Manufacturers Representative



EPNA Forest Products
 Division of Cottage Camp Cabin Inc.
 727 Lansdowne St., W., Unit 100
 Peterborough, Ontario, K9J 1Z2, Canada
 North America Tel: 1-800-545-2150, Ex 555
 All other countries Tel: 1-705-874-3195
 Web: www.EPNAForestProducts.com
 Email: Sales.Forest@EPNA.ca

Dealer ~ Builder