



Northline Commerce Park Suite 604

4,400 sq.ft for lease

26395 Northline Commerce Dr, Taylor, MI 48180



Status:	Active
Property Type:	Industrial For Lease
Industrial Type:	Flex Space, Industrial-Business Park
Contiguous Space:	4400 SF
Total Available:	4400 SF
Rental Rate:	
Lease Types:	
Loading:	1 Dock, 1 Door
Ceiling:	20 - 22 ft.
Office SF:	1800 SF
Drive-In Bays:	1 Bay



Property Overview

For Lease By Owner. Call REA Construction at 734-946- 8730. Nice clean space with truck well. Great rates. We pay for lawn care and snow removal and building taxes. We have 2 million square feet of industrial buildings to accommodate your growth.

1 Mile from Detroit Metropolitan Airport. West of Beech Daly and South of Northline Rd.

Virtual Tour

<https://view.ricoh360.com/4e1b1877-46a8-4d1c-b0b8-dde355c2e296>

<https://www.rea-construction.net/>

Listing Details

General Information

Listing Name:	4400 sq.ft. For Lease	Zoning:	LIGHT INDUSTRIAL
Tax ID Number/APN:	263960770	Building Name:	Northline Commerce Park
Industrial Type:	Flex Space, Industrial-Business Park, Light Industrial, Warehouse/Distribution		

Available Space

Suite/Unit Number:	604	Rent Escalators:	Fixed Lease
Suite Floor:	1	Office SF:	1800 SF
Space Available:	4400SF	Parking Spaces:	8
Minimum Divisible:	4400SF	Loading Docks:	1
Maximum Contiguous:	4400SF	Loading Doors:	1
Space Type:	Relet	Drive In Bays:	1
Lease Rate:		Ceiling Height:	22
Lease Type:	Modified Gross	Clear Height:	20

Space Description For Lease By Owner. Call REA Construction at 734-946-8730. Nice clean space with truck well. Small office. Great rates. We pay for lawn care and snow removal and building taxes. We have 2 million square feet of industrial buildings to accommodate your growth. 1 Mile from Detroit Metropolitan Airport. West of Beech Daly and South of Northline Rd.

Area & Location

Market Type:	Large	Transportation:	Highway
Side of Street:	South	Highway Access:	194
Road Type:	Paved	Airports:	Detroit Metropolitan Airport
Property Visibility:	Good		

Building Related

Tenancy:	Multiple Tenants	Total Parking Spaces:	8
Total Number of Buildings:	10	Amps:	200
Number of Stories:	1	X-Phase:	3
Property Condition:	Good	Heat Type:	Gas, Suspended Radiant Heaters
Year Built:	2001	Heat Source:	Central, Radiant
Roof Type:	Flat	Lighting:	Metal Halide
Construction/Siding:	Block	Internet Access:	Cable
Parking Type:	Surface		

Land Related

Land Area: 50 Acres

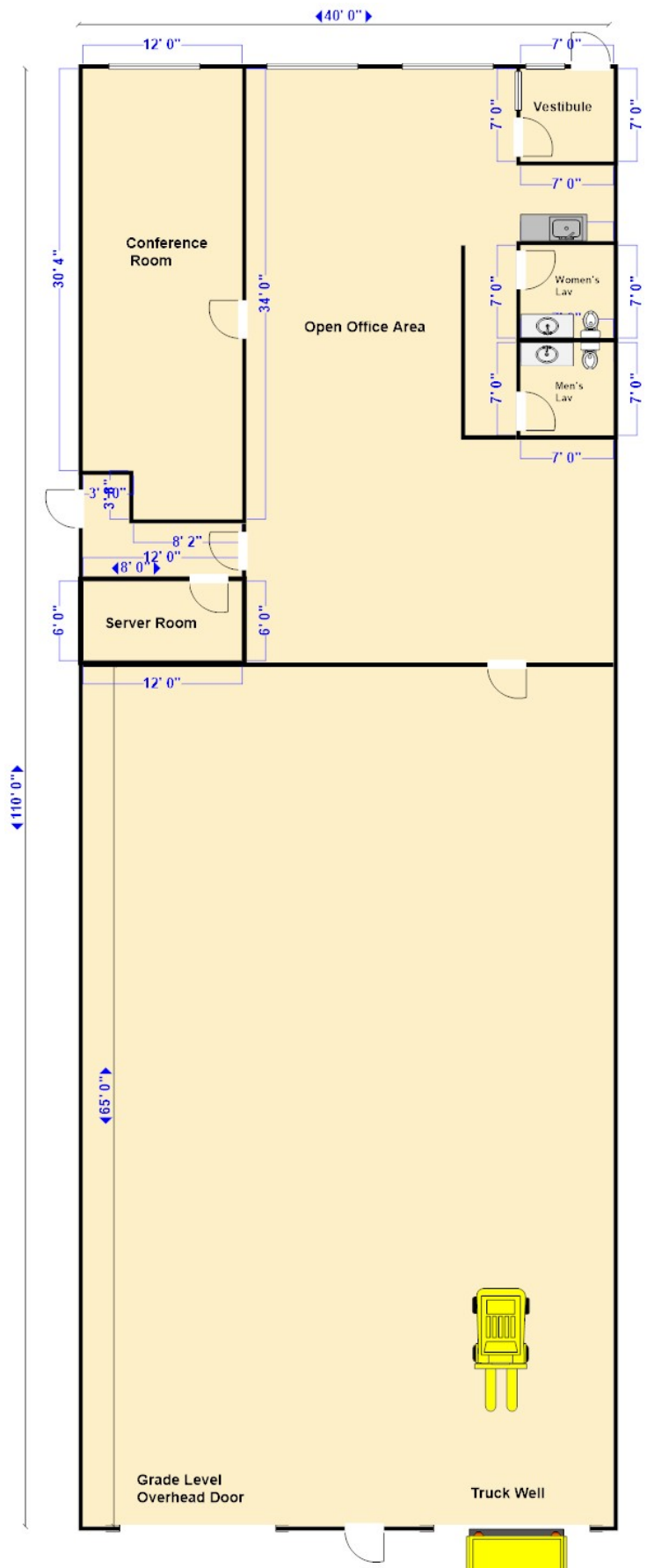
Location

Address: 26395 Northline Commerce Dr, Taylor, MI 48180
County: Wayne
MSA: Detroit-Warren-Dearborn
Submarket: Airport District



Property Images





4,400sq.ft. 26395 Northline Commerce Dr.
Suite 604



Property Contacts



Rea Construction

Salvatore Giordano

734-946-8730

[rea@reaconstruction.net]