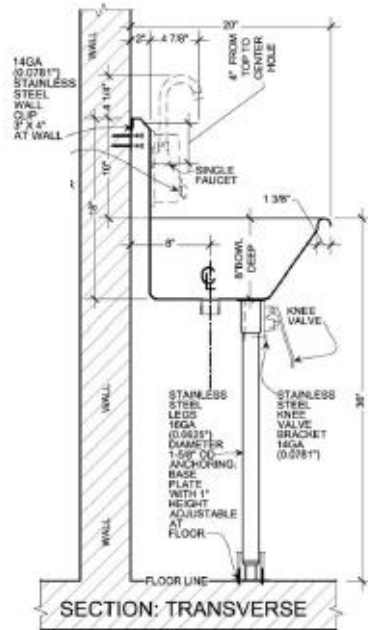
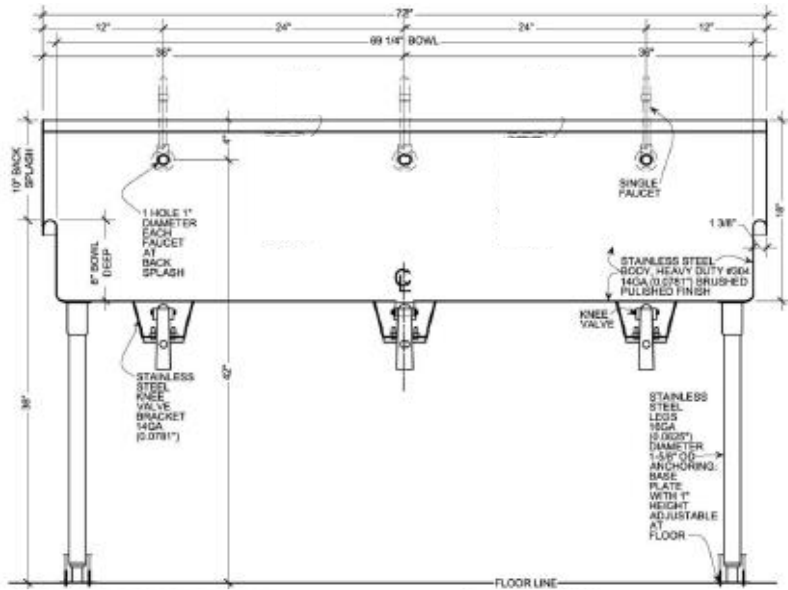


Wicketts Stainless

SPECIFICATION

Commercial Sink Heavy Duty
Wash Up Sink



Engineering Specification: WWT-7220-K-LF- 3 STATION

14 gauge, type 304 stainless steel wash sink. 1-3/8" rolled rims. 1-1/2" welded in drain. Exposed surfaces polished to a satin #4 finish. Supported on wall and clips and tubular legs to wall. Knee valves; wall faucets.

WARNING:
This product can expose you to chemicals, which are known to the State of California to cause cancer. For more information, visit www.P65Warnings.ca.gov.

Wicketts Stainless, LLC.
2279 Eagle Glen Pkwy. 112-209
Corona, Ca 92883
Tel: 951-858-2548
Fax: 951-638-9059
Sales@wickettsstainless.com



ENGINEERING
CITY OF LOS ANGELES

Approved for Manufacturing

Company: _____

Signature: _____

Print: _____ Date: / /