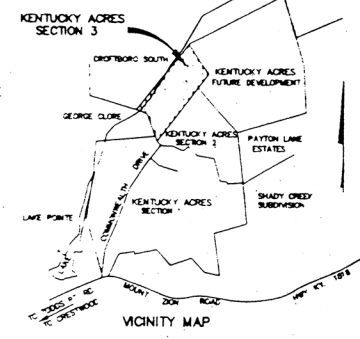


NOTE:
NO RESIDENTIAL STRUCTURE SHALL BE BUILT
IN THE FLOOD PLAIN OF THE CREEK ALONG THE
BACK OF LOTS 200, 201, 202, 212, 213, 214, 225,
226, 227, 240, 241, & 242.

TOTAL ACRES IN AREA BEING SUBDIVIDED 94.25 AC.
TOTAL NUMBER OF LOTS 71
TOTAL ACREAGE IN LOTS 83.81 AC.
MINIMUM LOT SIZE 1.01 AC.

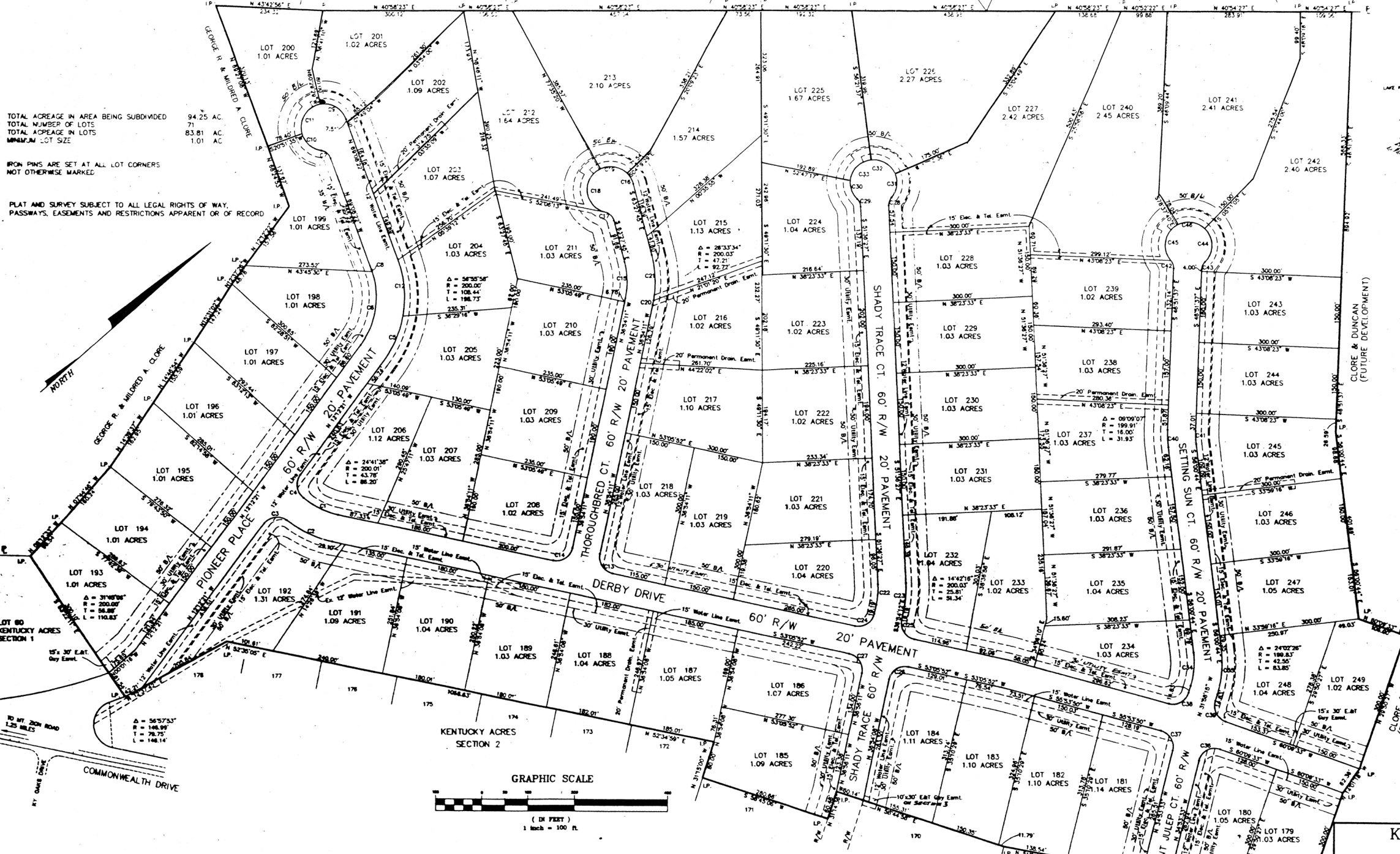
IRON PINS ARE SET AT ALL LOT CORNERS
NOT OTHERWISE MARKED.

PLAT AND SURVEY SUBJECT TO ALL LEGAL RIGHTS OF WAY,
PASSWAYS, EASEMENTS AND RESTRICTIONS APPARENT OR OF RECORD.



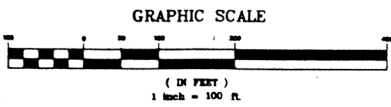
R/W CURVE DATA CHART

CURVE	RADIUS	CHORD	BEARING
C1	170.00'	22.71'	N 85°28'42" E
C2	230.00'	38.37'	N 85°28'42" E
C3	300.00'	49.50'	S 32°47'30" W
C4	350.00'	58.20'	S 32°47'30" W
C5	400.00'	66.70'	S 32°47'30" W
C6	450.00'	75.00'	S 32°47'30" W
C7	500.00'	83.10'	S 32°47'30" W
C8	550.00'	91.00'	S 32°47'30" W
C9	600.00'	98.70'	S 32°47'30" W
C10	650.00'	106.20'	S 32°47'30" W
C11	700.00'	113.50'	S 32°47'30" W
C12	750.00'	120.60'	S 32°47'30" W
C13	800.00'	127.40'	S 32°47'30" W
C14	850.00'	134.00'	S 32°47'30" W
C15	900.00'	140.40'	S 32°47'30" W
C16	950.00'	146.60'	S 32°47'30" W
C17	1000.00'	152.60'	S 32°47'30" W
C18	1050.00'	158.40'	S 32°47'30" W
C19	1100.00'	164.00'	S 32°47'30" W
C20	1150.00'	169.40'	S 32°47'30" W
C21	1200.00'	174.60'	S 32°47'30" W
C22	1250.00'	179.60'	S 32°47'30" W
C23	1300.00'	184.40'	S 32°47'30" W
C24	1350.00'	189.00'	S 32°47'30" W
C25	1400.00'	193.40'	S 32°47'30" W
C26	1450.00'	197.60'	S 32°47'30" W
C27	1500.00'	201.60'	S 32°47'30" W
C28	1550.00'	205.40'	S 32°47'30" W
C29	1600.00'	209.00'	S 32°47'30" W
C30	1650.00'	212.40'	S 32°47'30" W
C31	1700.00'	215.60'	S 32°47'30" W
C32	1750.00'	218.60'	S 32°47'30" W
C33	1800.00'	221.40'	S 32°47'30" W
C34	1850.00'	224.00'	S 32°47'30" W
C35	1900.00'	226.40'	S 32°47'30" W
C36	1950.00'	228.60'	S 32°47'30" W
C37	2000.00'	230.60'	S 32°47'30" W
C38	2050.00'	232.40'	S 32°47'30" W
C39	2100.00'	234.00'	S 32°47'30" W
C40	2150.00'	235.40'	S 32°47'30" W
C41	2200.00'	236.60'	S 32°47'30" W
C42	2250.00'	237.60'	S 32°47'30" W
C43	2300.00'	238.40'	S 32°47'30" W
C44	2350.00'	239.00'	S 32°47'30" W
C45	2400.00'	239.40'	S 32°47'30" W
C46	2450.00'	239.60'	S 32°47'30" W
C47	2500.00'	239.60'	S 32°47'30" W
C48	2550.00'	239.40'	S 32°47'30" W
C49	2600.00'	238.90'	S 32°47'30" W
C50	2650.00'	238.10'	S 32°47'30" W
C51	2700.00'	237.00'	S 32°47'30" W
C52	2750.00'	235.60'	S 32°47'30" W
C53	2800.00'	233.90'	S 32°47'30" W
C54	2850.00'	231.90'	S 32°47'30" W
C55	2900.00'	229.60'	S 32°47'30" W
C56	2950.00'	227.00'	S 32°47'30" W
C57	3000.00'	224.10'	S 32°47'30" W
C58	3050.00'	220.90'	S 32°47'30" W
C59	3100.00'	217.40'	S 32°47'30" W
C60	3150.00'	213.60'	S 32°47'30" W
C61	3200.00'	209.50'	S 32°47'30" W
C62	3250.00'	205.10'	S 32°47'30" W
C63	3300.00'	200.40'	S 32°47'30" W
C64	3350.00'	195.40'	S 32°47'30" W
C65	3400.00'	190.10'	S 32°47'30" W
C66	3450.00'	184.60'	S 32°47'30" W
C67	3500.00'	178.80'	S 32°47'30" W
C68	3550.00'	172.70'	S 32°47'30" W
C69	3600.00'	166.30'	S 32°47'30" W
C70	3650.00'	159.60'	S 32°47'30" W
C71	3700.00'	152.60'	S 32°47'30" W
C72	3750.00'	145.30'	S 32°47'30" W
C73	3800.00'	137.70'	S 32°47'30" W
C74	3850.00'	129.80'	S 32°47'30" W
C75	3900.00'	121.60'	S 32°47'30" W
C76	3950.00'	113.10'	S 32°47'30" W
C77	4000.00'	104.30'	S 32°47'30" W
C78	4050.00'	95.20'	S 32°47'30" W
C79	4100.00'	85.80'	S 32°47'30" W
C80	4150.00'	76.10'	S 32°47'30" W
C81	4200.00'	66.10'	S 32°47'30" W
C82	4250.00'	55.80'	S 32°47'30" W
C83	4300.00'	45.20'	S 32°47'30" W
C84	4350.00'	34.30'	S 32°47'30" W
C85	4400.00'	23.10'	S 32°47'30" W
C86	4450.00'	11.60'	S 32°47'30" W
C87	4500.00'	0.00'	S 32°47'30" W



LOT 80 KENTUCKY ACRES SECTION 1
15' 30' EAST GUY EASEMENT
TO MT. ZION ROAD 1.25 MILES
COMMONWEALTH DRIVE

SURVEYOR'S CERTIFICATE
I HEREBY CERTIFY THAT THIS PLAT AND SURVEY WERE MADE UNDER MY SUPERVISION AND THAT THE ANGULAR AND LINEAR MEASUREMENTS, AS WITNESSED BY MONUMENTS SHOWN HEREON, ARE TRUE AND CORRECT TO THE BEST OF MY KNOWLEDGE AND BELIEF.
Jerry P. Hoagland
JERRY P. HOAGLAND, R.L.S. 542



RECORD PLAT
KENTUCKY ACRES
SECTION 3
OLDHAM COUNTY KENTUCKY

DEVELOPERS:
Clore & Duncan
P.O. Box 37
Crestwood, Kentucky 40014

ENGINEER:
HOAGLAND SURVEYING & ENGINEERING
P.O. Box 64
LaGrange, KY 40031
JERRY HOAGLAND, ENGINEER

DATE: AUGUST, 1993

KY. ACRES SEC. 3

41-6A-3

NOV. 1993