

BUMBLE BEE BANQUET

By thoughtfully cultivating a season-long progression of native flowering plants, we can nurture our bumble bees and enhance their life work.

continuous flowering sequence



spring →

Virginia Waterleaf
Hydrophyllum virginianum



summer →

Canada Milkvetch
Astragalus canadensis



fall

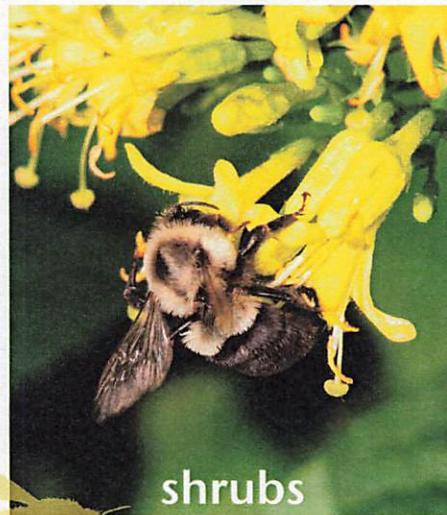
New England Aster
Aster novae-angliae

diversity of native plants



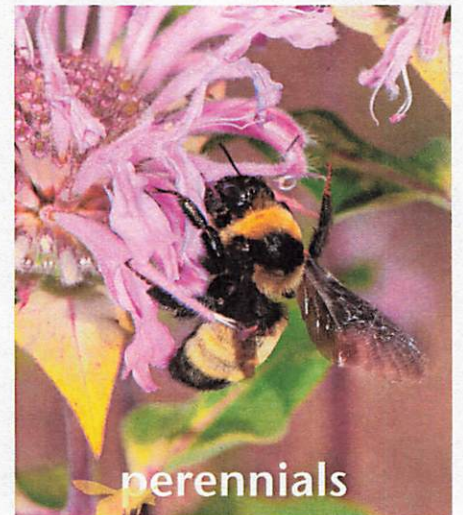
trees

Wild Plum
Prunus americana



shrubs

Dwarf Bush Honeysuckle
Diervilla lonicera



perennials

Wild Bergamot
Monarda fistulosa



BUMBLE BEE FORAGE

	BOTANICAL NAME	COMMON NAME	COLOR	MOISTURE	EXPOSURE	HEIGHT	BLOOM						
							APR	MAY	JUN	JUL	AUG	SEP	OCT
PERENNIALS: SUN/PART SUN, MEDIUM-DRY	<i>Agastache foeniculum</i>	Anise Hyssop	purple	m, d	s, ps	3-4 ft			x	x	x	x	
	<i>Allium stellatum</i>	Prairie Onion	lavender	m, d	s, ps	1-2 ft				x	x		
	<i>Anemone patens</i>	American Pasqueflower	white	d	s, ps	0.5 ft	x	x					
	<i>Aquilegia canadensis</i>	Wild Columbine	red	m, d	s, ps	2-3 ft	x	x	x				
	<i>Baptisia alba</i>	Wild White Indigo	white	m, d	s, ps	2-4 ft			x	x			
	<i>Baptisia bracteata</i>	Cream Indigo	cream	m, d	s, ps	2 ft		x	x				
	<i>Dalea candida</i>	White Prairie Clover	white	m, d	s, ps	1-2 ft			x	x	x	x	
	<i>Dalea purpurea</i>	Purple Prairie Clover	purple	m, d	s, ps	1-2 ft			x	x	x		
	<i>Delphinium virescens</i>	Wild Larkspur	blue	m, d	s, ps	1.5-3 ft			x	x			
	<i>Desmodium canadense</i>	Stiff Tick Trefoil	lavender	m, d	s, ps	2-3 ft			x	x			
	<i>Dodecatheon media</i>	Shooting Star	pink	m	s, ps	1-2 ft			x	x			
	<i>Echinacea pallida</i>	Pale Purple Coneflower	lavender	m, d	s, ps	2-4 ft			x	x			
	<i>Lupinus perennis</i>	Wild Lupine	blue	d	s, ps	1-2 ft		x	x	x			
	<i>Monarda fistulosa</i>	Wild Bergamot	lavender	m, d	s, ps	2-3.5 ft				x	x	x	
	<i>Penstemon digitalis</i>	Smooth Beardtongue	white	m, d	s, ps	2-3 ft		x	x	x			
	<i>Penstemon grandiflorus</i>	Large Beardtongue	lavender	m, d	s, ps	1-3 ft		x	x				
	<i>Ratibida pinnata</i>	Gray-headed coneflower	yellow	m, d	s, ps	3-5 ft				x	x	x	
	<i>Rudbeckia hirta</i>	Black-eyed Susan	yellow	m, d	s, ps	1-3 ft			x	x	x	x	x
	<i>Solidago rigida</i>	Stiff Goldenrod	yellow	m, d	s	3-4 ft					x	x	x
	<i>Tradescantia ohiensis</i>	Ohio Spiderwort	blue	m	s, ps	1-2 ft		x	x	x			
<i>Verbena stricta</i>	Hoary Vervain	purple	d	s, ps	1-2 ft			x	x	x	x		
<i>Zizia aurea</i>	Golden Alexander	yellow	m, d	s, ps	1-3 ft	x	x	x					
PERENNIALS: SUN/PART SUN, MEDIUM-WET	<i>Asclepias incarnata</i>	Swamp Milkweed	pink	w, m	s	3-4 ft			x	x	x		
	<i>Aster novae-angliae</i>	New England Aster	purple	w, m	s, ps	3-5 ft					x	x	x
	<i>Chelone glabra</i>	White Turtlehead	white	w, m	s	1-3 ft				x	x	x	
	<i>Eupatorium maculatum</i>	Spotted Joe Pye Weed	pink	w	s, ps	3-7 ft			x	x	x		
	<i>Gentiana andrewsii</i>	Bottle Gentian	blue	w, m	s, ps	1-2 ft					x	x	
	<i>Helenium autumnale</i>	Sneezeweed	yellow	w, m	s, ps	2-5 ft					x	x	x
	<i>Iris versicolor</i>	Blue Flag Iris	blue	w, m	s, ps	1.5-3 ft		x	x	x			
	<i>Liatis pycnostachya</i>	Prairie Blazingstar	purple	w, m	s, ps	2-5 ft				x	x	x	
	<i>Lobelia siphilitica</i>	Blue Lobelia	blue	w, m	s, ps	1-3 ft				x	x	x	x
	<i>Mimulus ringens</i>	Monkey Flower	violet	w, m	s, ps	1-3 ft				x	x		
	<i>Physostegia virginiana</i>	Obedient Plant	pink	w, m	s, ps	2-4 ft					x	x	
	<i>Verbena hastata</i>	Blue Vervain	blue	w, m	s, ps	2-5 ft				x	x	x	
	<i>Vernonia fasciculata</i>	Common Ironweed	purple	w, m	s, ps	3-6 ft				x	x	x	
	<i>Veronicastrum virginicum</i>	Culver's Root	white	w, m	s, ps	3-5 ft			x	x	x		
PERENNIALS: SHADE	<i>Aster macrophyllus</i>	Large-leaved Aster	white	m, d	ps, sh	1-2 ft					x	x	x
	<i>Dicentra cucullaria</i>	Dutchman's Breeches	white	m	sh	0.5-1 ft		x	x				
	<i>Geranium maculatum</i>	Wild Geranium	pink	m, d	ps, sh	1-2 ft	x	x	x	x			
	<i>Hydrophyllum virginianum</i>	Virginia Waterleaf	violet	m, d	ps, sh	1 ft		x	x				
	<i>Polemonium reptans</i>	Jacob's Ladder	blue	m	ps, sh	0.5-1 ft	x	x	x				
	<i>Polygonatum biflorum</i>	Solomon's Seal	white	m, d	ps, sh	1-3 ft		x	x				
	<i>Solidago flexicaulis</i>	Zigzag Goldenrod	yellow	m, d	ps, sh	2-3.5 ft					x	x	x
TREES AND SHRUBS	<i>Amorpha canescens</i>	Leadplant	purple	m, d	s	1-2 ft			x	x	x		
	<i>Cornus racemosa</i>	Gray Dogwood	white	m	s, ps	3-8 ft		x	x				
	<i>Cornus sericea</i>	Red Osier Dogwood	white	m, w	s, ps	3-9 ft		x	x				
	<i>Diervilla lonicera</i>	Dwarf Bush Honeysuckle	yellow	m, d	ps, sh	2-3 ft			x	x	x		
	<i>Prunus americana</i>	Wild Plum	white	m, d	s, ps	10-25 ft		x					
	<i>Prunus serotina</i>	Black Cherry	white	w, m, d	s, ps	10-65 ft		x					
	<i>Staphylea trifolia</i>	American Bladdernut	white	m	ps	5-20 ft		x	x				
	<i>Tilia americana</i>	American Basswood	white	m	s, ps	10-65 ft				x			
	<i>Zanthoxylum americanum</i>	Prickly Ash	yellow	m, d	s, ps	4-20 ft		x					



Minnesota Bumble Bee Conservancy

A learning circle is forming among Minnesotans eager to learn more about bumble bees (and other native pollinators), to share information about bumble bees, insect pollination and how we can help each other. **For more information, visit nelsonfamilyfarm.org**

Citizen Scientists - Help Monitor Bumble Bees

Bumble Bee Watch www.bumblebeewatch.org

Minnesota Bumble Bee Survey

befriendingbumblebees.com/survey.html

Author: James Nelson Design: Heather Holm