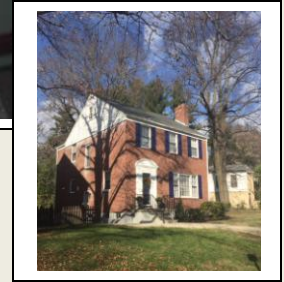
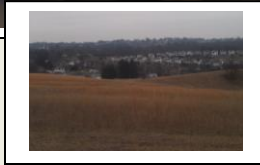


# Galey Consulting Group- Probate & Trust



Galey Consulting (GCG) specializes in all classes of real estate throughout the Mid-Atlantic. GCG provides a turnkey service to estate attorneys, personal and trust representatives—to achieve maximum market value for the property with the shortest days on market. Depending on the requirements for each property, services include:

- **Broker Price Opinion/Property Valuation for residential, commercial and land properties.**
- **Highest and Best Use land analysis.**
- **Non real estate asset evaluation for estates through GCG associates.**
- **Creation of individualized marketing programs to local, regional and national prospects—including extensive internet exposure on national commercial sites; on site signage and collateral advertising.**
- **Exposure through each brokerage worldwide offices.**
- **Marketing to GCG's extensive builder/developer network.**
- **Marketing to GCG's network of investors, hedge fund managers, etc.**
- **Coordination of maintenance, property renovation and tenant management.**
- **Negotiation of all contracts for sale—coordination from contract to closing.**
- **Extensive communication and follow up from contract to closing.**

REO & Asset Disposition Services  
Residential, Land & Commercial Brokerage  
Probate & Trust Real Estate

**Galey Consulting**  
Group