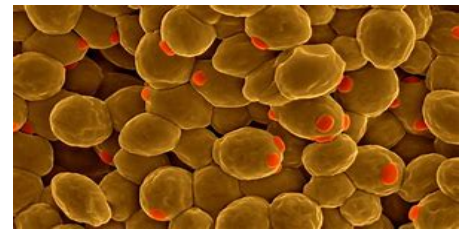


STERLING AGRICULTURE

YEAST PLUS+

DESCRIPTION: for POULTRY



STERLING YEAST PLUS + POULTRY. THIS UNIQUE MIXTURE TAKES INTO CONSIDERATION THE SUBSTRATE CONTAINED IN THE FEED. THIS PRODUCT CONTAINS A PROPRIETARY BLEND OF ACTIVE YEAST.

ALLOW FOUR (4) WEEKS FOR EFFECTIVENESS.

WHY USE STERLING YEAST PLUS+ IN YOUR RATIONS?

1. FOR BROILERS- **A 10% WEIGHT GAIN** OVER 6 WEEKS USING LIVE YEAST SC@ 1 X10⁹TH CFU/gram.
[http://www.scienceandnature.org/IJABR_Vol7\(2\)2017/IJABR_V7\(2\)17-5.pdf](http://www.scienceandnature.org/IJABR_Vol7(2)2017/IJABR_V7(2)17-5.pdf)
2. Research noted supplemented with 0.2% yeast had significantly **better mean cumulative feed efficiency** (1.80) which is higher than the control group not using yeast, was 1.98 feed efficiency.
[www.scienceandnature.org/IJABR_Vol7\(2\)2017/IJABR_V7\(2\)17-5.pdf](http://www.scienceandnature.org/IJABR_Vol7(2)2017/IJABR_V7(2)17-5.pdf)
3. Results indicated an **increase in egg production** percentage of layers fed with 0.4% live yeast which recorded 83.4% compared with 74% of control groups of layers fed.
http://www.jofamericanscience.org/journals/am-sci/am0611/21_3117am0611_159_169.pdf
4. Saccharomyces have a potential effect on modulation of intestinal microflora and **pathogen inhibition**. And Zhang et al. conducted an experiment with 240, day-old, male broilers to investigate the effects of Saccharomyces cerevisiae (SC) cell components on the meat quality and they **reported that meat tenderness could be improved by Saccharomyces cerevisiae extract (YE)**.
5. Improved digestive microbiota balance, less severe intestinal lesions, higher gut villi and coccidiosis related mortality was numerically reduced when the yeast product was supplemented in the feed.
Dr. Christaki. Effect of a multi-strains yeast fractions product plus anticoccidial on performance and gut health of broiler chickens under Eimeria challenge (oral presentation).
6. **Conclusion from several studies: Treating with SC-YEAST increases weight gain, better feed conversion, increase in egg production, reduces the pathogen/disease threats and reduces coccidiosis.**

USE RECOMMENDATIONS:

USE 5-10 LBS OF YEAST

PLUS+ POULTRY PER 2,000 LBS GRAIN.

COOL, DRY LOCATION
IN A CLOSED
CONTAINER.

Central Indiana Organics & Sterling Agriculture
5780 SOUTH 200 EAST LEBANON, INDIANA 46052
765-541-1404

