

Box Score Report

MHS @ Bismarck Legacy - Feb 9, 2021 - W 67-65

Period Stats

Team	1	2	Final
MHS	28	39	67
LHS	33	32	65

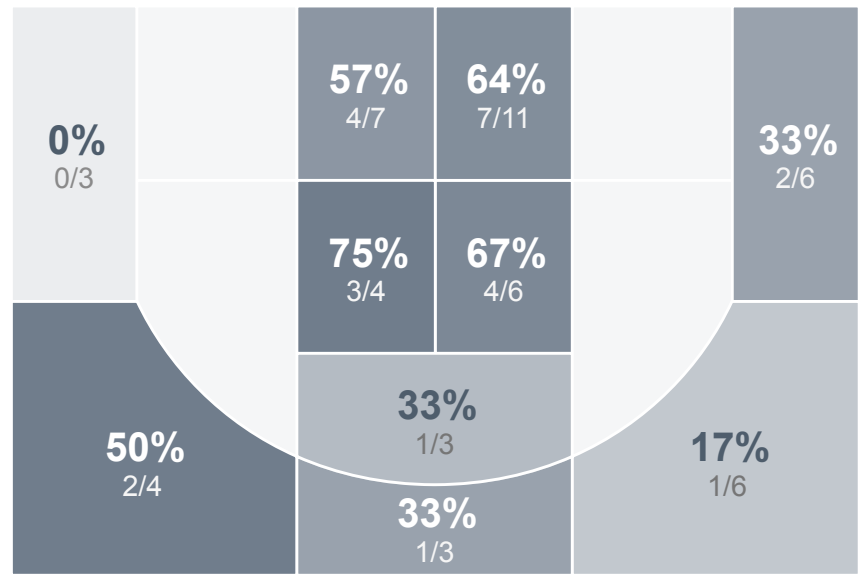
Run Graph



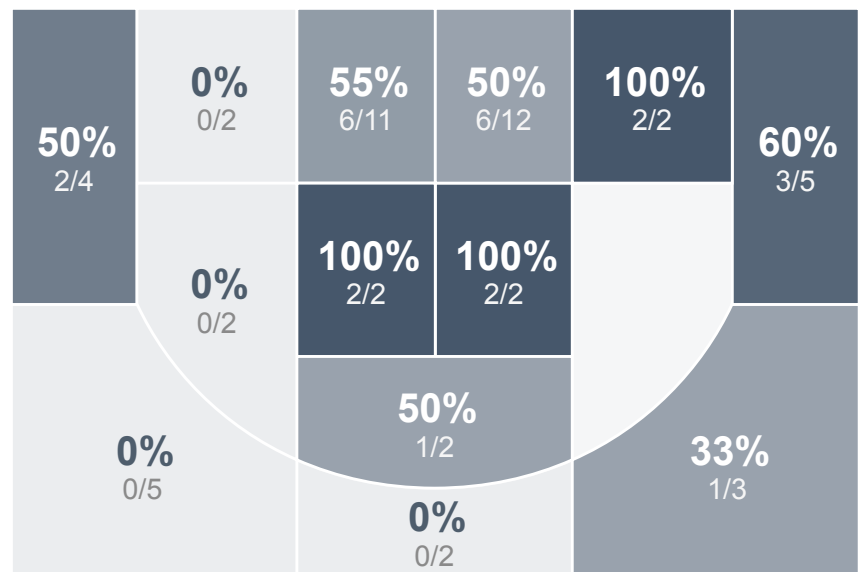
Team Stats

	MHS	LHS
Field Goal %	47.2%	46.3%
Effective Field Goal %	52.8%	51.9%
2FG Made/Attempted	19/31	19/35
2FG%	61.3%	54.3%
3FG Made/Attempted	6/22	6/19
3FG%	27.3%	31.6%
FT Made/Attempted	11/17	9/14
Free Throw Percentage	64.7%	64.3%
Points Per Possession	1.05	1.01
Transition Points	6	6
Points Off Turnovers	11	6
Second Chance Points	10	4
Points in the Paint	36	32
Offensive Rebounds	7	8
Defense Rebounds	24	23
Assists	13	14
Deflections	2	0
Steals	3	5
Blocks	3	1
Turnovers	10	12
Personal Fouls	17	19
Charges Taken	4	1

Boys Varsity Basketball



Bismarck Legacy High School



Boys Varsity Basketball's Player Stats

Name	Pts	FG	3FG	FT	+/-	MINS	OREB	DREB	AST	DEFL	STL	BLK	TO	FOUL	CHG
#1 Michael Ross	6	2/3	0/0	2/2	+ 4	14	1	1	2	0	0	1	1	4	1
#3 RaShawn Wilcox	13	4/8	3/6	2/4	+ 3	30	0	2	0	1	1	0	1	2	0
#4 Kade Butz	3	0/2	0/2	3/3	- 5	18	1	4	0	0	0	1	2	3	0
#5 Eric Wentz	6	2/7	1/5	1/3	+ 12	30	0	5	2	0	2	0	0	2	2
#13 Teagan Kinchen	3	1/4	1/4	0/0	- 2	18	0	4	0	0	0	0	1	1	1
#21 Gavin Argent	0	0/2	0/2	0/0	- 7	14	2	0	1	0	0	0	0	1	0
#22 Darik Dissette	19	9/13	0/2	1/3	+ 2	36	2	4	1	0	0	1	2	3	0
#23 Deonte' Martinez	17	7/14	1/1	2/2	+ 3	33	0	3	7	1	0	0	3	1	0

Bismarck Legacy High School's Player Stats

Name	Pts	FG	3FG	FT	+/-	MINS	OREB	DREB	AST	DEFL	STL	BLK	TO	FOUL	CHG
#2 Brett Martin	5	1/1	1/1	2/2	+ 2	14	0	1	0	0	0	0	0	0	0
#3 Keagen Woodbury	14	5/8	2/4	2/2	- 10	21	0	2	1	0	1	0	2	4	0
#5 Brett Lacombe	0	0/0	0/0	0/0	+ 1	10	0	2	0	0	0	0	0	3	0
#12 Ben Patton	11	4/9	1/3	2/2	+ 3	26	2	3	0	0	1	0	1	3	0
#13 Joey Buzalsky	2	1/4	0/0	0/2	- 3	28	3	2	3	0	1	0	1	2	0
#14 Lyric Hoffman	2	1/4	0/0	0/0	+ 3	15	0	0	3	0	1	0	2	0	0
#20 Nick Kupfer	24	10/21	1/7	3/6	- 5	34	0	7	1	0	1	1	3	1	1
#22 Lucas Weigel	0	0/0	0/0	0/0	+ 8	6	0	0	1	0	0	0	0	0	0
#23 Brady Burman	3	1/1	1/1	0/0	- 3	9	1	1	1	0	0	0	1	2	0
#24 Logan Wetzel	2	1/4	0/3	0/0	- 2	16	1	1	2	0	0	0	0	2	0
#33 Sam Link	2	1/2	0/0	0/0	- 4	14	0	3	2	0	0	0	1	2	0