

Series 100 Electrical Machine Systems



Hampden

ENGINEERING CORPORATION



Students have unlimited potential.

Hampden Series 100 motors and machines comprise a line of engineering training systems that lets you build the solution that will meet your training needs.



A Single Platform... that ta

The heart of the Hampden Series 100 is the Hampden Mobile Student Experimentation Station, which provides the platform on which your student training laboratory is built. The station is constructed of heavy code-gauge steel, and contains power and metering services, an ample work surface, and storage area for experimentation components. The mobile stations can be located anywhere in the laboratory or rolled into a classroom for demonstration purposes. Take your training environment in any and all directions by adding the modular components that you need – now, or at any time, in any order.

Series 100 Motors Program offers:

- Flexibility to build a system that meets your specific training needs
- Expandability to add on to your system as your requirements grow
- Industry-standard machine design for effective real-world training
- Ease of connection and storage for maximum hands-on time
- Rugged construction that lasts, student after student, class after class
- Integrated safety features that allow student interaction without compromising safety

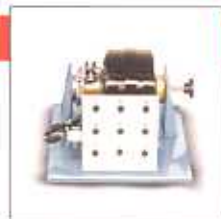
Your training equipment should, too.

Start with a Model HMD-100CM student Experimentation Station, which becomes the platform for your training system. Add to your system from a full array of modular motors and generators, accessories, controls and loads.

MOTORS, GENERATORS, AND TRANSFORMERS

1/3 horsepower systems cover 1 ϕ and 3 ϕ AC motors, DC motors, dissectible motor systems, and transformers.

- 1 ϕ transformers
- 3 ϕ transformers
- Dissectible transformers



LOADS AND METERING

A wide variety of accessory components cover resistance loads, reactive loads, prony brakes, dynamometers, metering and tachometers.

- Digital load cells
- Analog AC/DC metering
- Digital AC/DC metering
- Electric brakes
- Strobe tachometers



ELECTROMECHANICAL CONTROLS

AC/DC motor controls are based upon industrial components. The training can cover from the industrial parts to the troubleshooting applications.



kes you in any and all directions.

ELECTRONIC CONTROLS

State-of-the-art controls cover the areas of variable frequency drives, SCR controls, and vector drive systems.



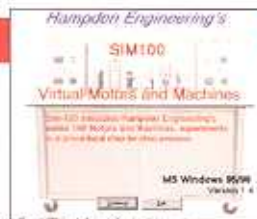
DIGITAL CONTROL / DATA LOGGING

Program allows digital feedback from the experiment. The digital signal can then be transferred to a visual representation through our software in graphical display.



SIM-100 VIRTUAL MOTORS

SIM-100 virtual motors program offers a state-of-the-art view of experimentation using a user-friendly application in virtual reality.



The world leader in engineering training equipment

*S*ince 1954, Hampden Engineering has brought industry-standard engineering training equipment to students from high school to advanced college levels. Hampden equipment has become the model for quality in engineering, vocational, technical, and industrial training use, both in the USA and around the world. Hampden's real-world training environments take students out of the textbook and into the workplace of their future. No one provides state-of-



the-art training systems that support a wider range of technical disciplines with basic, intermediate, and advanced-level programs. And no one offers greater flexibility and expandability to ensure that the laboratory you build will be suited to the scope and nature of your training environment – today and in the future.



Hampden is committed to providing industry-leading technology. For the latest from Hampden, visit our home page at <http://www.hampden.com> or e-mail us at sales@hampden.com

Hampden ENGINEERING CORPORATION