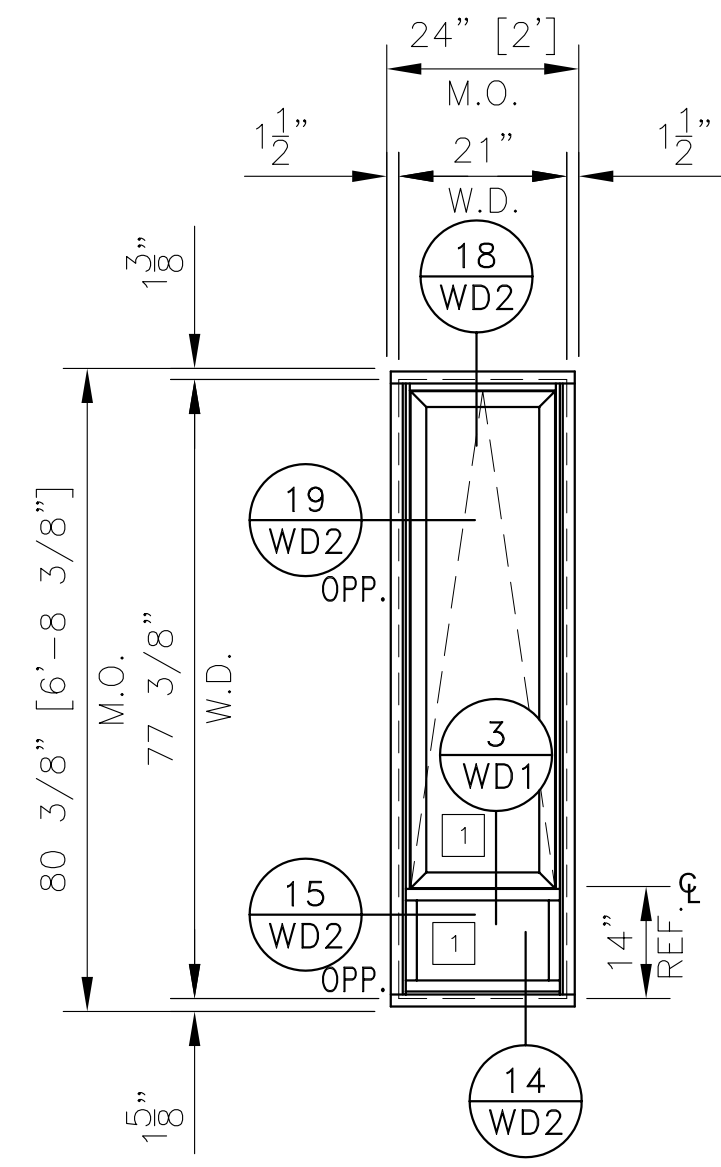
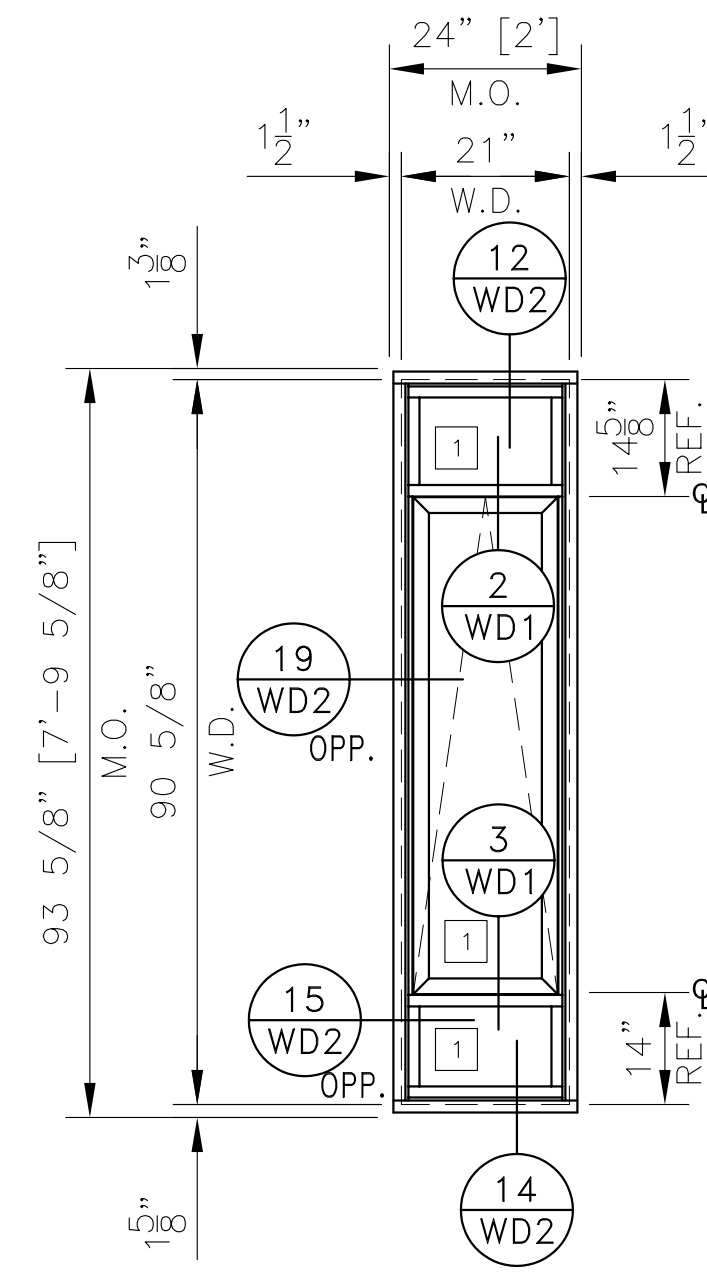


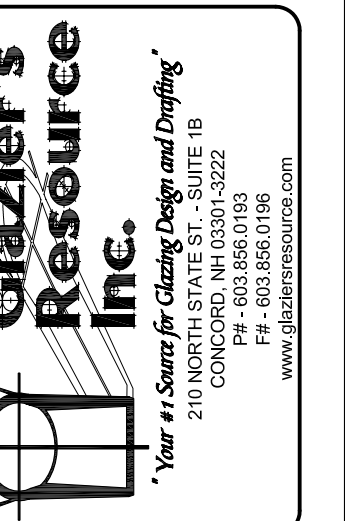
WINDOW TYPE 'W3' (4) REQ'D
 SERIES: WAUSAU 4250 OS FIXED WINDOW
 SERIES: WAUSAU 4250 OS PROJECT OUT WINDOW
 ARCHITECTURAL REF.: A-351



WINDOW TYPE 'W3.1' (4) REQ'D
 SERIES: WAUSAU 4250 OS FIXED WINDOW
 SERIES: WAUSAU 4250 OS PROJECT OUT WINDOW
 ARCHITECTURAL REF.: A-351



WINDOW TYPE 'W3A' (1) REQ'D
 SERIES: WAUSAU 4250 OS FIXED WINDOW
 SERIES: WAUSAU 4250 OS PROJECT OUT WINDOW
 ARCHITECTURAL REF.: A-351



SCALE:
 1/2" = 1'
 DATE:
 08.25.06
 PROJECT:
 GR06-0103A
 SHEET:

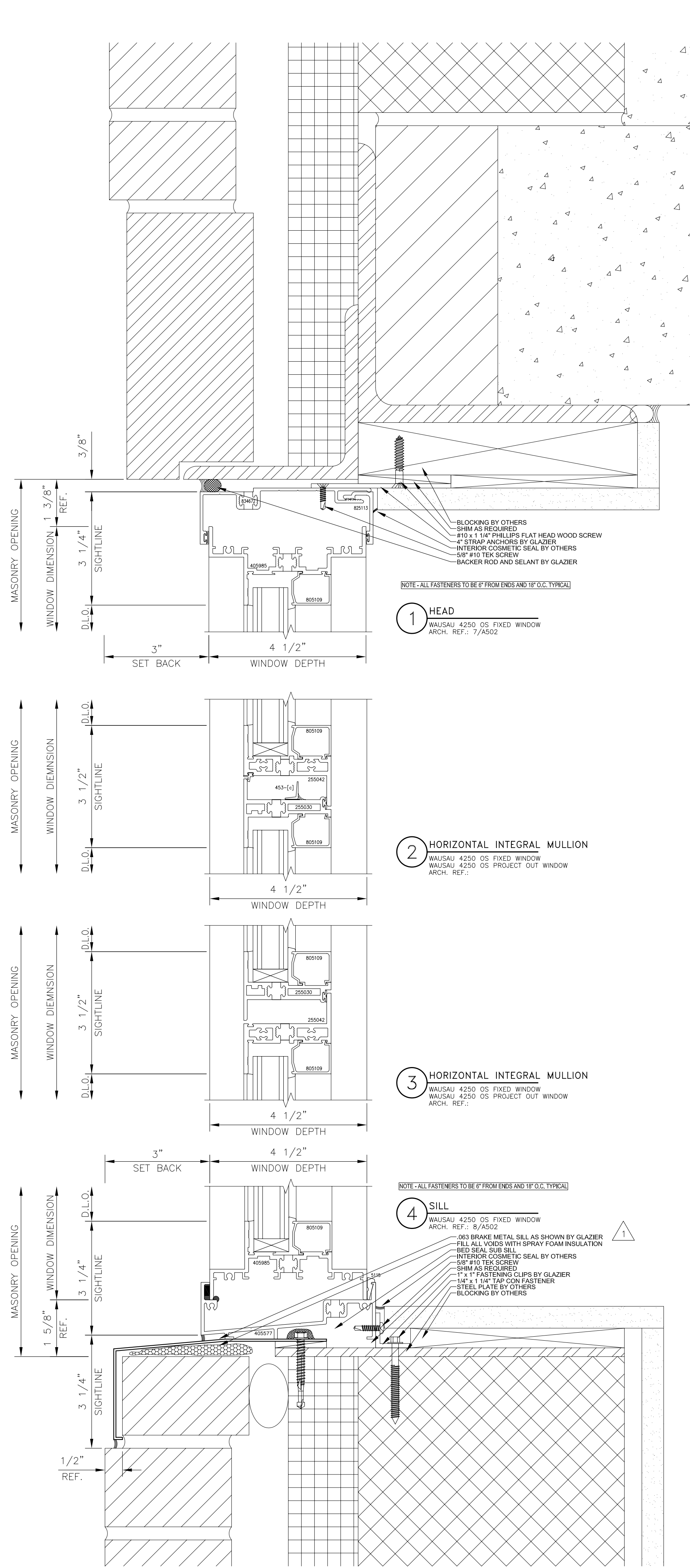
WE2

WINDOW ELEVATIONS
 PROJECT: NEW RESIDENCE HALL @ BRYANT UNIVERSITY
 LOCATION: 1150 DOUGLAS PIKE
 SMITHFIELD, RHODE ISLAND

ARCHITECT:
ADD Inc.
 210 Broadway
 Cambridge, MA 02139
 617.234.3100
 Fax 617.661.7118

GLAZING CONTRACTOR:

PER ARCHITECT'S NOTES	11.01.06	GRI

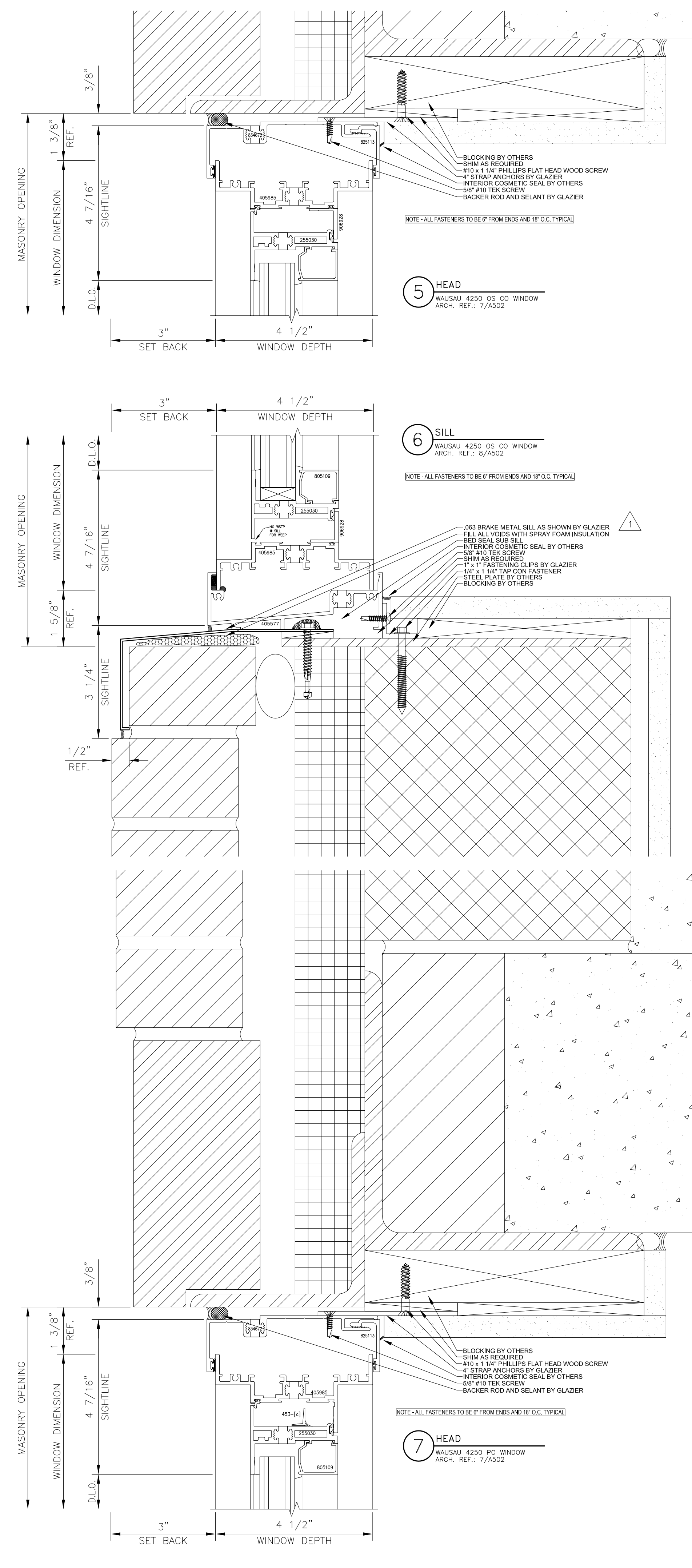


1 HEAD
WAUSAU 4250 OS FIXED WINDOW
ARCH. REF.: 7/A502

2 HORIZONTAL INTEGRAL MULLION
WAUSAU 4250 OS FIXED WINDOW
WAUSAU 4250 OS PROJECT OUT WINDOW
ARCH. REF.:

3 HORIZONTAL INTEGRAL MULLION
WAUSAU 4250 OS FIXED WINDOW
WAUSAU 4250 OS PROJECT OUT WINDOW
ARCH. REF.:

4 SILL
WAUSAU 4250 OS FIXED WINDOW
ARCH. REF.: 8/A502

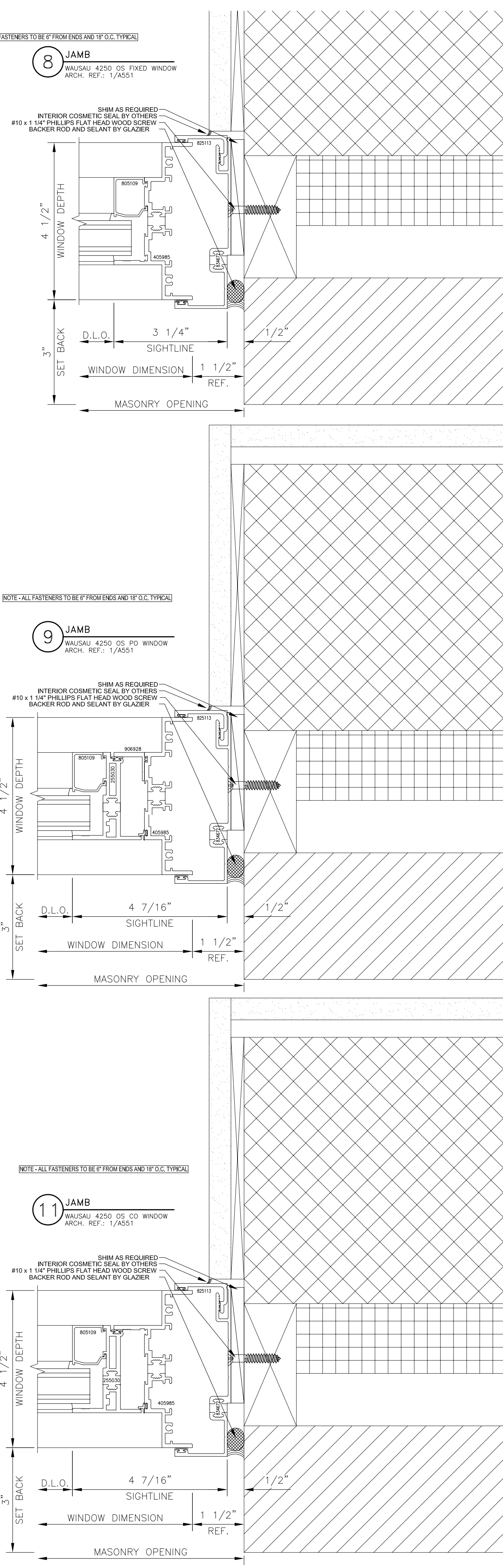


5 HEAD
WAUSAU 4250 OS CO WINDOW
ARCH. REF.: 7/A502

6 SILL
WAUSAU 4250 OS CO WINDOW
ARCH. REF.: 8/A502

7 HEAD
WAUSAU 4250 PO WINDOW
ARCH. REF.: 7/A502

10 VERTICAL INTEGRAL MULLION
WAUSAU 4250 OS PO/CO WINDOW
WAUSAU 4250 OS CO WINDOW
ARCH. REF.: 1/A551



8 JAMB
WAUSAU 4250 OS FIXED WINDOW
ARCH. REF.: 1/A551

9 JAMB
WAUSAU 4250 OS PO WINDOW
ARCH. REF.: 1/A551

11 JAMB
WAUSAU 4250 OS PO/CO WINDOW
WAUSAU 4250 OS CO WINDOW
ARCH. REF.: 1/A551

11.01.06	GRI
PER ARCHITECT'S NOTES	

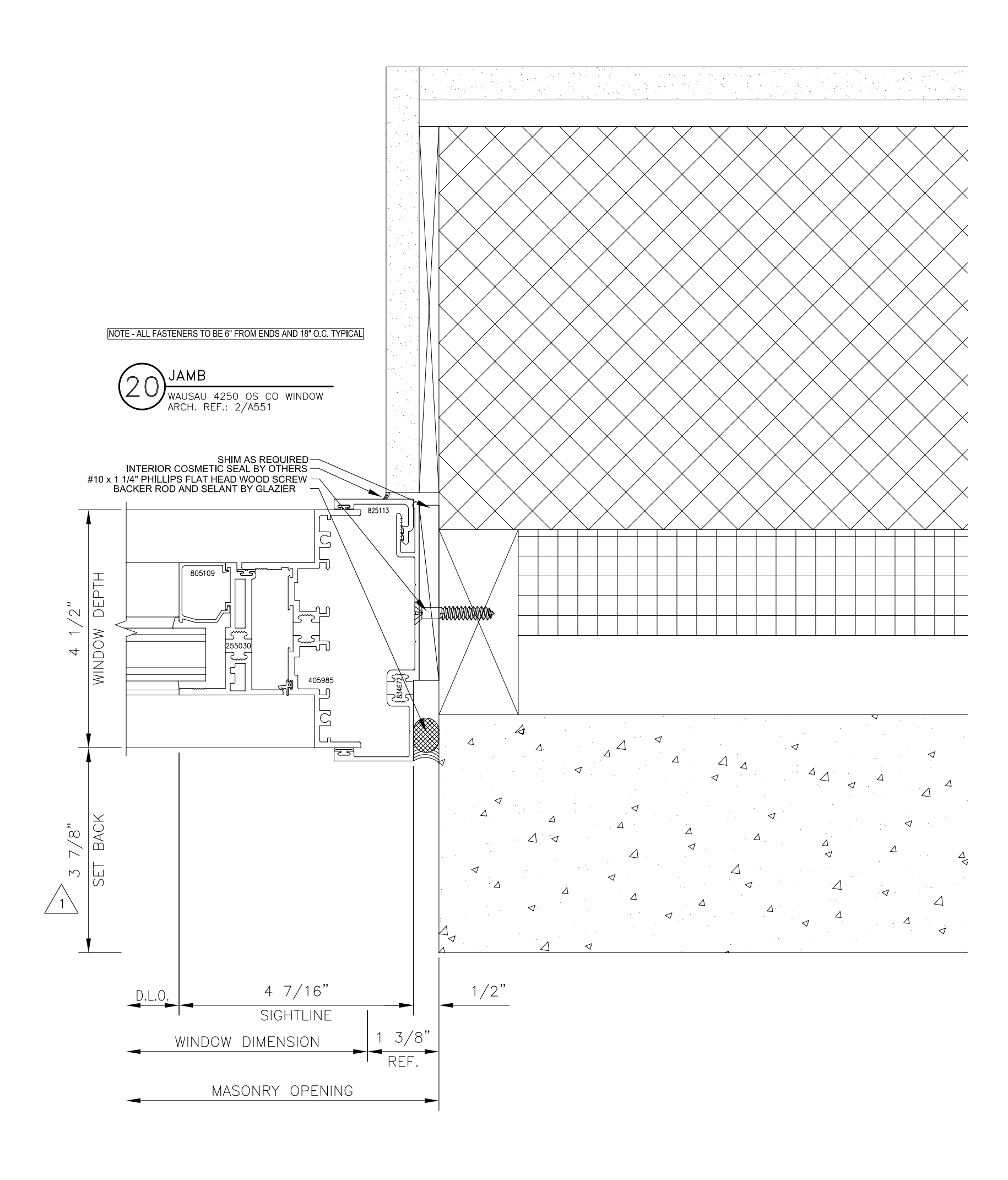
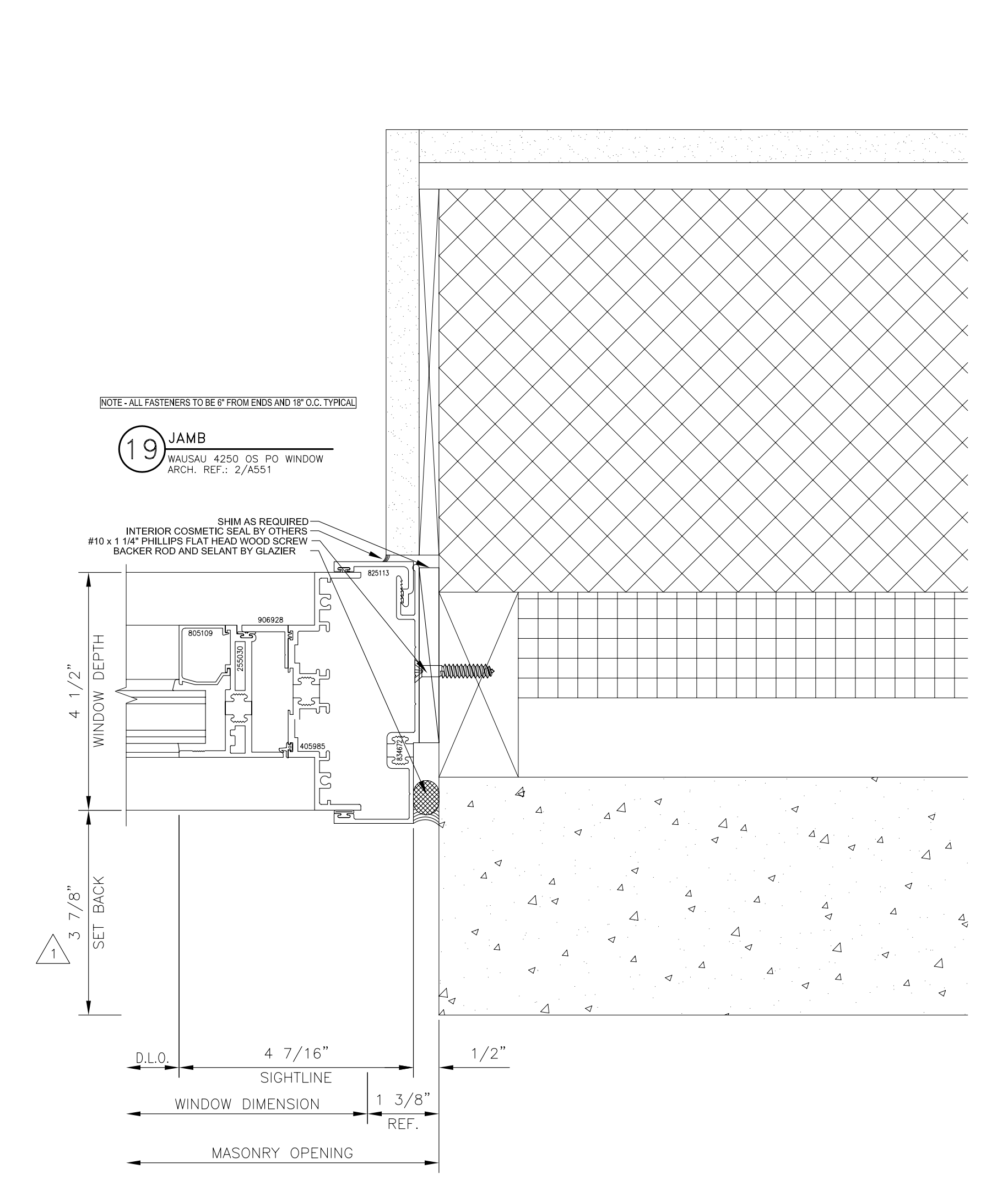
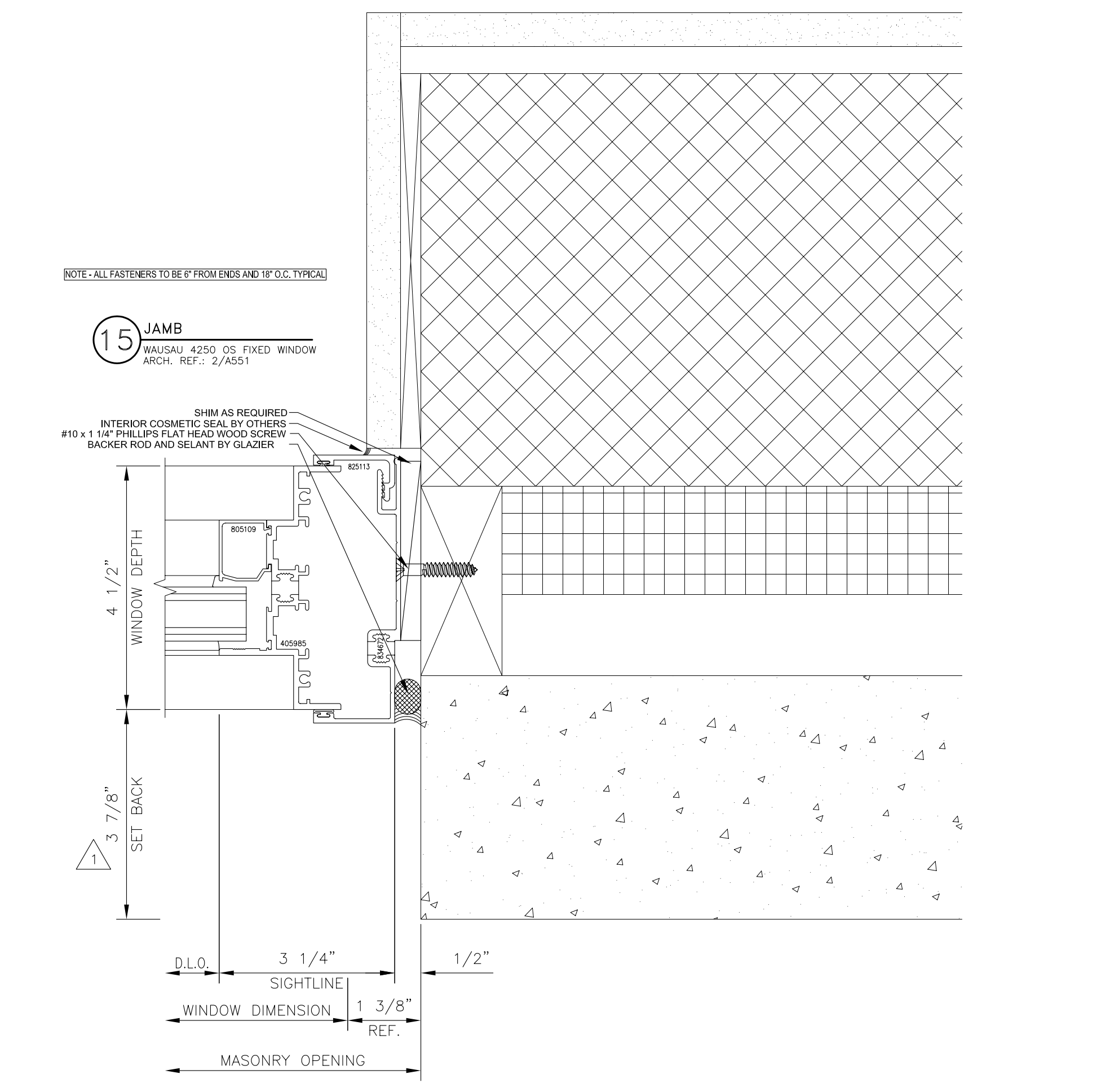
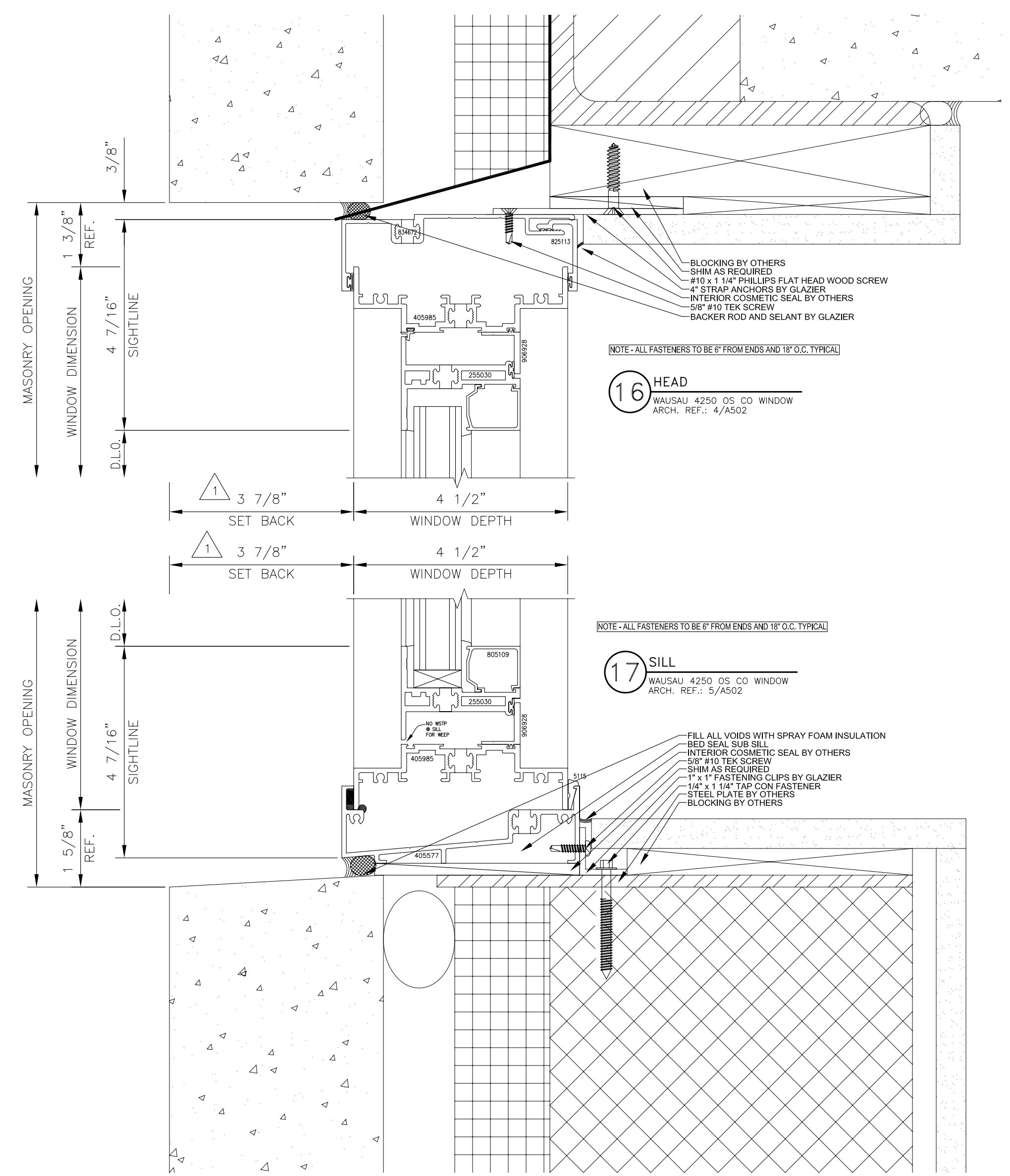
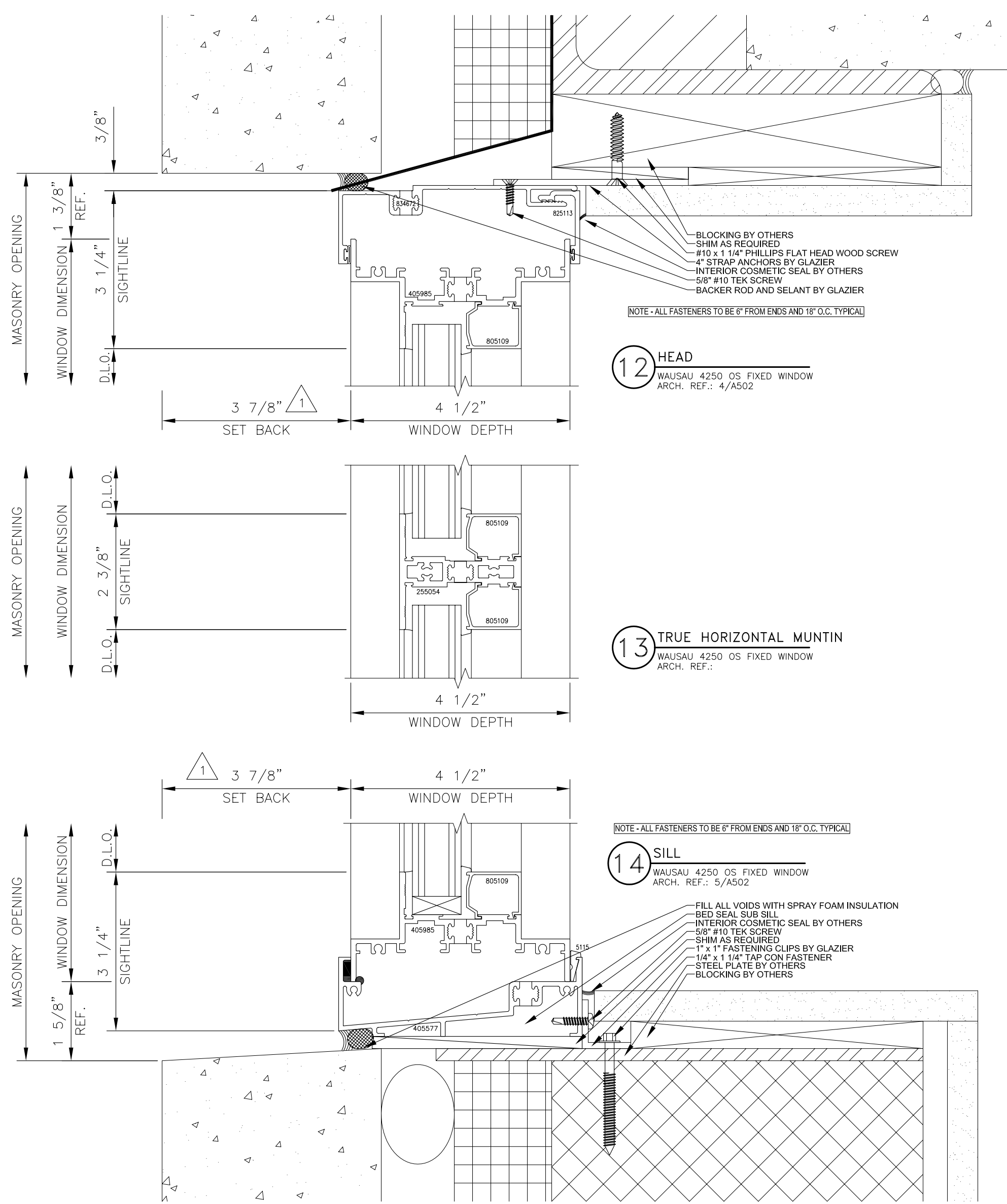
GLAZING CONTRACTOR:

ARCHITECT:
ADD Inc.
210 Broadway
Cambridge, MA 02139
617 234 3100
Fax 617 661 7118

WINDOW DETAILS
PROJECT: NEW RESIDENCE HALL @ BRYANT UNIVERSITY
LOCATION: 1150 DOUGLAS PIKE
SMITHFIELD, RHODE ISLAND

Glazier's Resource Inc.
"New & Repair Glazing, Drapery and Dryfitting"
258 NORTH STATE ST., SUITE 118
CONCORD, NH 03301-3222
PH: 603.860.0198
WWW.GLAZIERSRESOURCE.COM

SCALE: HALF
DATE: 08.25.06
PROJECT: GR06-0103A
SHEET: **WD1**



PER ARCHITECT'S NOTES

GRI	11.01.06
-----	----------

GLAZING CONTRACTOR:

ARCHITECT:
ADD Inc.
210 Broadway
Cambridge, MA 02139
617 234 3100
Fax 617 661 7118

WINDOW DETAILS
PROJECT: NEW RESIDENCE HALL @ BRYANT UNIVERSITY
LOCATION: 1150 DOUGLAS PIKE
SMITHFIELD, RHODE ISLAND

Glazier's Resource Inc.
New & Repair Glazing, Design and Drafting
268 NORTH STATE ST., SUITE 10
CONCORD, NH 03301-9322
PH: 603.860.0186
www.glaziersresource.com

SCALE: HALF
DATE: 08.25.06
PROJECT: GR06-0103A
SHEET: **WD2**