

# *St. Alban's Episcopal Church*

## *Parish Profile 2019*



### **Search Process**

We seek a new rector to help us harness and focus our hope and energy to achieve our ambitious goals and priorities. As you will see in this Parish Profile, all our key indicators are heading in a good direction: average Sunday attendance is up, pledge and plate income has risen significantly, and ministry and outreach efforts have increased.

We consider ourselves to be adaptable and open to future changes, but the real glue that holds us together is our love for our traditional liturgy, the Book of Common Prayer, and our identity as faithful Episcopalians. We invite you to get to know us through this Parish Profile.

#### **The Search Committee**

Jan Heineman, Chairman

Linda Brockwell, Sally Carr, Kay Iwanski, Fred Poteet

Kelly Ryan, Sandy Schlegel, Joe Stevens, Pat Stewart

**Our Mission:**

Praising, learning, and sharing God's Love

**Our Vision:**

St. Alban's is a church family that welcomes, nurtures and reaches out

**Our Values:**

Listening to diverse viewpoints to know the mind of Christ

Collaborating with each other to do God's work

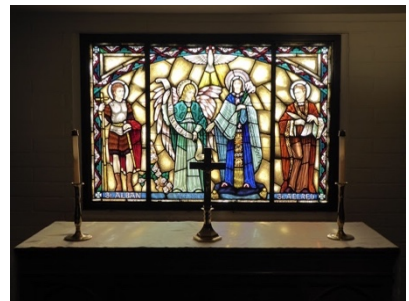
Connecting with our neighbors to bless our community

Tending the blessings God entrusts to us

Serving Jesus by serving his brothers and sisters

## A HISTORY OF ST. ALBAN'S EPISCOPAL CHURCH

The Christian hero whom the parish claims as its patron saint is Alban of Britain. He is the first identified Church martyr in the British Isles. Tradition holds that Alban was a young Roman soldier recruited from the native Britons and stationed in a city northeast of London. The city later was renamed 'Alban' in honor of his martyrdom, and the Cathedral of St. Alban stands today on the site of his sacrificial death. He gave shelter to a Christian priest who was fleeing persecution, and was converted by that priest. When Roman officers came to arrest the priest, Alban exchanged clothing with him and was then tortured and executed, traditionally dated in 304.



This parish was founded in 1957 when seven people began to gather regularly for worship here in Wickenburg. In 1959, through the generosity and vision of Charles (Squire) and Sylvia Maguire, the church was built, and subsequently donated to the Diocese. The parish became a self-supporting congregation in the same year and was granted official parish status. Rev. Harold B. Adams was the first priest and served until the Rev. Dean E. McMann was called to be the first Rector in 1960. The Rector Emeritus, the Rev. Dan J. Gerrard, served the parish twice, 1962-65 and again 1988-96. St. Alban's became a mission in 2012. Rev. Ron Keel has been our interim Rector since the summer of 2016.

Josten Hall, the Fellowship hall, including its downstairs rooms for education, nursery, and a library was generously built by Enid Josten and her family. It was nearly destroyed by fire in 1979 and rebuilt shortly thereafter. The Mary Chapel was dedicated



in 1967 and along with the church itself, contains very fine examples of traditional stained glass windows. In 1999, during the tenure of Rev. John A. Smart, the traditionally designed chancel and sanctuary were creatively remodeled, and now feature a contemporary seating of the choir behind a free-standing altar. On the rear wall of the church to the right of the

entrance doors, a stone from St. Alban's Cathedral in Britain was mortared in place, establishing a physical as well as a spiritual union of the congregations.



In 1991 a Memorial Garden/Columbarium space on the church grounds for the interment of cremated remains was established. It is a perpetually maintained Garden with interment niches in the courtyard wall or pillars and in the landscaped earth just outside the courtyard. The names of those interred are indicated by means of permanent lettered plaques. The funds for this maintenance are obtained from the purchase of reserved spaces and are to be used for the Memorial Garden only.



## **FACILITIES**

The Church building was built in 1959. The sanctuary can comfortably seat 125 worshipers. Mary Chapel adjoins the sanctuary and is used for extra seating and small specialized services. The windows in the sanctuary and chapel are beautiful stained glass depicting many saints and other sacred objects. The Sacristy is well organized and also provides a staircase going into the basement meeting room and a small room for the choir robes and music storage.

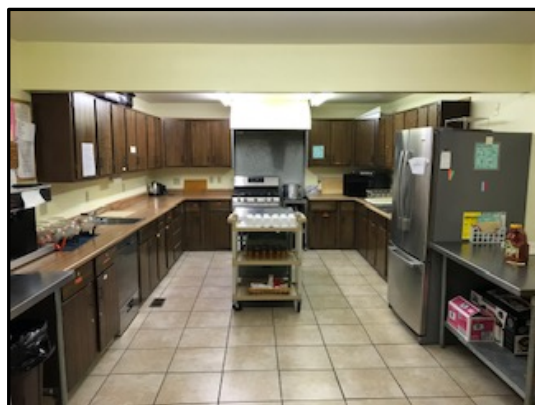




The Memorial Garden/Columbarium is located on the north side of the church. There are 112 niches for cremated remains in the wall and columns. Beautiful tile work in the shape of a cross adorns the floor of the columbarium. Just outside the garden walls are spaces for in ground cremated remains, all with metal makers.

Rose bushes are planted in beds on both sides of the church.

The Rose Garden has been taken care of with love for many years by volunteers. Many rose bushes were planted by family members to honor their loved ones.

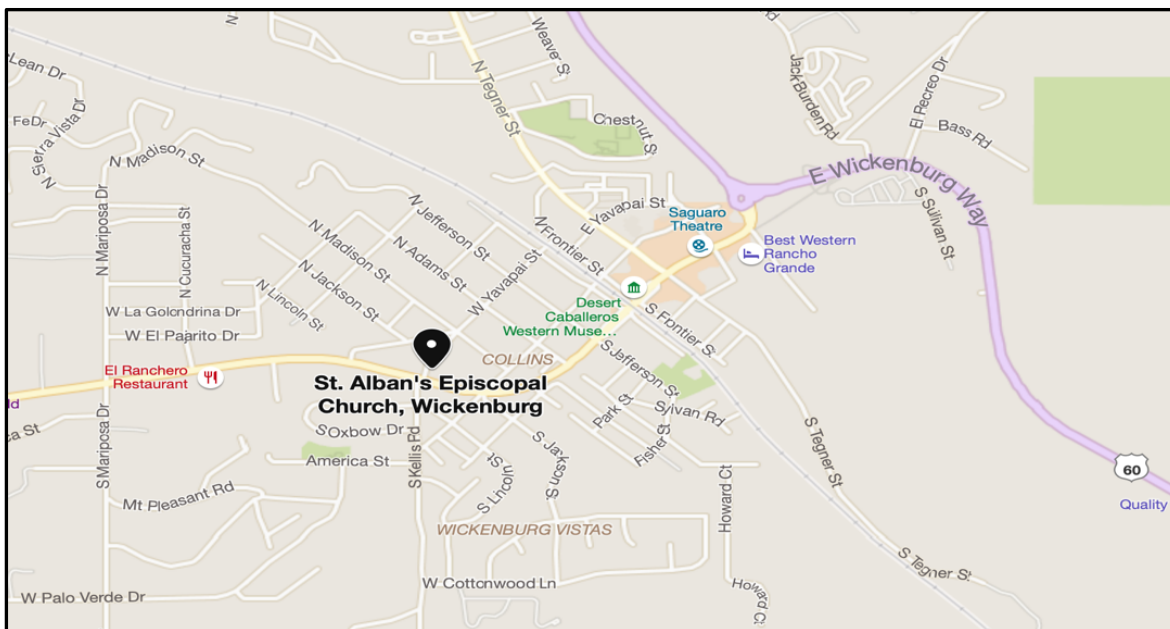


Josten Fellowship Hall is connected to the church by a covered walkway. The carpeting in the fellowship hall was recently installed. The church offices, for the Rector and a secretary, adjoin the Fellowship Hall. The large kitchen is well equipped and stocked. A staircase from the Fellowship Hall to the lower level

leads to several storage rooms, library, maintenance room, nursery, and large classroom.



## Our Demographics



St. Alban's Episcopal Church serves Maricopa and Yavapai Counties, and lies in the heart of Wickenburg. We provide worship to Wickenburg and many surrounding communities.

	2015	2016	2017	2018
Average Sunday Attendance	52	53	64	62
Active Baptized Members	107	107	113	113

Attendance for 2018 has steadily climbed. The 2018 Christmas Eve service was attended by 75 and Easter service numbered 87.

## St. Alban's Episcopal Church

Address: 357 W. Yavapai St., Wickenburg, AZ 85390

Telephone number: [928-684-2133](tel:928-684-2133)

E-mail address: [stalbans@qwest.net](mailto:stalbans@qwest.net)

Web site: [www.stalbanswickenburgh.com](http://www.stalbanswickenburgh.com)

## Our Common Life & Ministries

### Our Worship

St. Alban's worships according to Holy Eucharist Rite II with occasional use of Rite I. We sing the Gloria in Excelsis, the Gradual Hymn, a Communion hymn in addition to the Processional and Recessional hymns. We celebrate the Blessing of the Animals, All Saints Day, Pentecost and other key dates with special traditions. On Palm Sunday, we process, with palms, from the Fellowship Hall to the Church Service. During Lent, we offer the Washing of The Feet tradition and The Stations of the Cross service. In the Advent season, we have a Lessons and Carols service, lighting of the Advent Wreath and a new, well received, Blue Christmas Service. We have special floral arrangements for Easter and Christmas and beautiful weekly arrangements donated by members of the church. St. Alban's Sunday morning service combines ritual, musical expression and sermons which all create a meaningful time of prayer. We are a congregation open to new thoughts and change.



### Music/Choir/Organist

We have a dedicated fun choir, directed by our exceptional organist, Janelle Downing, who has been with us for over 20 years. She and the Rector confer about the music and hymns for the services, using various styles, depending on the time of the year and the church season. The Episcopal Musicians Handbook is used by the organist to match the music to the service. There are occasional services with instrumental accompaniment, depending on availability.



The Choir practices in the morning before the Sunday service. The choir is active from the 1<sup>st</sup> of October to the end of May. The quality of our music is important and the choir is dedicated to their art. This group is always open to new members!

### Our Deacon

We are blessed to have a newly ordained and enthusiastic Deacon, Debra Loder, with us. She has been a long-time member of the church and understands how our church functions. Debra's main ministry focus is to address food insecurity. She is responsible for our Community Action Program, CAP Café, Holiday Food Boxes for school children, Homeless Comfort Bags, Bags of Joy, and bottled water that are donated to the CAP Office Food Bank for the homeless and shut ins. The Homeless

Comfort Bags are also given to the local police and fire departments to hand out, and the Rector and Debra give them out to people who come to the church in need. Knitted animals are given to prehospital providers and the hospital for “emergency patients.” Our Deacon participates in the Sunday services and also takes communion to members who are unable to attend church and visits with those that are hospitalized.



### **Service Helpers**

We have Chalice bearers, lay lectors and readers, ushers and acolytes. There is annual refresher training and we are always open to more volunteers.

### **Altar Guild**

The Altar Guild’s primary purpose is to prepare, clean and maintain the altar, the linens and all Eucharistic vessels, as well as chancel, sacristy, and worship space. During certain times of the Church year (Lent, Easter, Thanksgiving and Christmas) the Church is specially decorated. The Altar Guild is in charge of ordering the bread and the wine and taking care of the weekly flower arrangements for the altar.

### **Christian Education**

Periodically we have an adult forum before our Sunday service, with various topics and discussions. These sessions have been led by the Rector and other members of the congregation. These classes usually consist of a video presentation and then a question and answer or discussion period.

### **Training**

We have developed a church Preparedness Plan outlining how to handle emergency situations. Our Bishops’ Committee/Vestry have all taken the Diocese required Praesidium Course for safe guarding children and training for anyone working with children.

### **Parish Nurse**

We are fortunate to have a registered nurse who provides the opportunity for parishioners to talk about medical concerns, get blood pressure readings, weight checks and blood sugar readings. This service is provided once a month after the Sunday morning service. We also have several wheelchairs available if needed and a couple of first aid kits for emergencies.



## Setting

St. Alban's has created a beautiful natural setting around the campus. We have a beautiful rose garden, several types of trees, flowering bushes and a grassy front lawn maintained by a local landscaper. Exceptional tile work was recently done to the floor of the Columbarium in our Memorial Garden. We have a warm and welcoming fellowship hall with newly installed carpet, and a new stove in the kitchen. On the main level of the hall, there is a large central meeting area, a kitchen, two bathrooms, several storage closets and offices for the Rector and the secretary. On the lower level of the hall are classrooms, a nursery, storage rooms, a work room and two more bathrooms. Our parking lot has been repaved, is well maintained and has a bright new LED photo sensor overhead light for safety.



## Weekly E-mail

We have a dedicated parishioner who sends creative, informative weekly e-mails to all the members. It includes common news and updates of our church family and church services. It is a positive and uplifting read, that always includes jokes or a special story at the end.

### Coffee Hour/CAP Cafe

After the Sunday service, there is a very social coffee hour usually provided by volunteers from the congregation. On the last Sunday of the month, Deacon Loder, her husband, Dave and volunteers provide a delicious and nutritious freewill offering potluck lunch. The money raised from this lunch goes to the local CAP Office Food Bank.



### ECW

We have a very active Episcopal Church Women's Group that is open to every woman of St. Alban's. This group meets monthly, for the purpose of supporting the church, with a focus of fellowship and offering a fun event every other month. ECW is responsible for the yearly church bazaar held the first Saturday of December. This is their main fundraising event



and a lot of work goes into making the products as well as selling them. The bazaar is very successful and quite a highlight. The proceeds fund the Rector's Discretionary Fund, the Scholarship Fund, Camp Scholarships at Chapel Rock Arizona Church Camp, as well as cleaning supplies and the supplies for the kitchen and the bathrooms. Portions of the proceeds also go to Cops Who Care, Holiday Food baskets, Wickenburg Community Service Center and this year we were able to adopt two families for Christmas, providing food baskets and gifts. This group also provides for Memorial Celebration of Life services, funding for other special occasion celebrations, Christmas gifts for the office staff and gifts/scholarships for our high school graduates. The ECW routinely participates with women's groups from other community churches several times a year.

### Communication Newsletter **THE MESSENGER**

Once a month, "The Messenger" newsletter is e-mailed to members and paper copies are available in the church. This newsletter delivers a special message from the Rector, current affairs of the church and activities that are planned for the month.

## Financial Summary/ Stewardship

St. Alban's is financially responsible with reserved funds used to offset expenses due to slower summer months and major improvement projects.

Essential Elements	2014	2015	2016	2017	2018
Pledging Units	42	46	38	41	44
Pledged Income	\$ 58,074	\$ 64,547	\$ 60,055	\$127,774	\$106,471
Normal Operating Income: (Plate offerings, Pledge payments, and Regular support)	\$116,909	\$126,965	\$109,694	\$114,228	\$120,194
All Revenues	\$131,426	\$163,781	\$137,020	\$117,708	\$147,955
Operating Expenses	\$121,949	\$128,582	\$109,655	\$115,039	\$123,717
Property Improvements, Outreach, other organizations	\$110,784	\$ 13,833	\$ 12,381	\$ 2,597	\$ 23,839
Account Balances	\$ 48,285	\$ 44,666	\$ 52,145	\$ 79,576	\$ 85,462

St Alban's currently has 113 members of record. Plate offering is often increased due to a significant number of winter visitors who have second homes in Wickenburg, and those passing through town.

There are many areas that may be covered in a larger church's budget that are unfunded at St. Alban's. We are blessed to have individuals who pay some of these costs and volunteers who do an incredible amount of work at the parish, including administrative work, gardening, minor repairs and housekeeping.

## **Hopes and Dreams of Members**

While our immediate dream is to complete the call for a full-time rector, we are looking to an even brighter future for St. Alban's with his/her leadership. The next step we have envisioned is to achieve full Parish status.

We are also looking forward to someone who will lead us into the future with a growing, family oriented congregation, with a children's ministry, children's sermons, youth group and vacation bible school. A bilingual Spanish speaking candidate would be beneficial to reach out to the Hispanic families in our community. All these, we hope, would open the doors to new members.

We are looking for an energetic, caring, visionary leader and teacher who will preserve our traditions while moving us forward. We are open to new ideas focusing on growth and the possibility of having two services: traditional and contemporary.

We expect our new Rector to live in and become involved in the community.

The following list came from our day of discovery which afforded the entire congregation the opportunity to participate.

- Youth/children's ministry
- Sustainability – younger congregation
- Family orientated – both youth and all “aged adults”
- Effective communicator
- Rector who would work with other community clergy
- Rector who is involved in community
- Rector who is a good leader
- Rector who is caring, empathetic, tactful and good listener
- Caring prayer book-led minister
- Rector who is energetic
- Increasing membership
- Greater ethnic and social mix in congregation
- Continued growth
- Visionary leader
- New ideas
- Focus on growth
- Two services: traditional and contemporary
- Financial stability
- Survival
- Fully utilize our facilities
- Greater outreach to sick and homebound

## **Outreach**

St. Alban's has been an integral part of the Wickenburg community since 1959. We have a presence on Facebook and Internet offering information to all, whether individuals traveling through Wickenburg, or potential new members. All are welcome at St. Alban's.

We have been serving our friends and neighbors as well as surrounding communities through a wide variety of Christian efforts to Love Thy Neighbor.

### **Giving Congregation:**

- We reach out to families in need
- Once a month CAP Café
- Blankets and clothing for Council of Native America Ministry

### **Deacon's Den:**

- Primary mission is to address food insecurity.
- Enlarged our outreach programs
- Water bottles to area hospital
- Homeless bags
- Food bags for children when school is closed
- Joy bags for shut-ins

### **Samaritan's Purse:**

- Shoe boxes are filled for the Samaritan's Purse program during Christmas

### **Gold Rush Days:**

- Coffee and donuts for participants who use our parking lot to watch the parade.

### **Individual Groups who meet in Fellowship Hall:**

- AA
- Alanon
- SRA
- Community Chorus

### **Highway Clean-up:**

- Bi-annually we clean up a section of Highway 60

## Reaching In:

- Shrove Tuesday
- Lenten services
- Weekly coffee hour meal after Sunday service
- ECW luncheons
- Craft days
- Tuesday breakfast gatherings
- Highway clean up
- Blessing of the animals

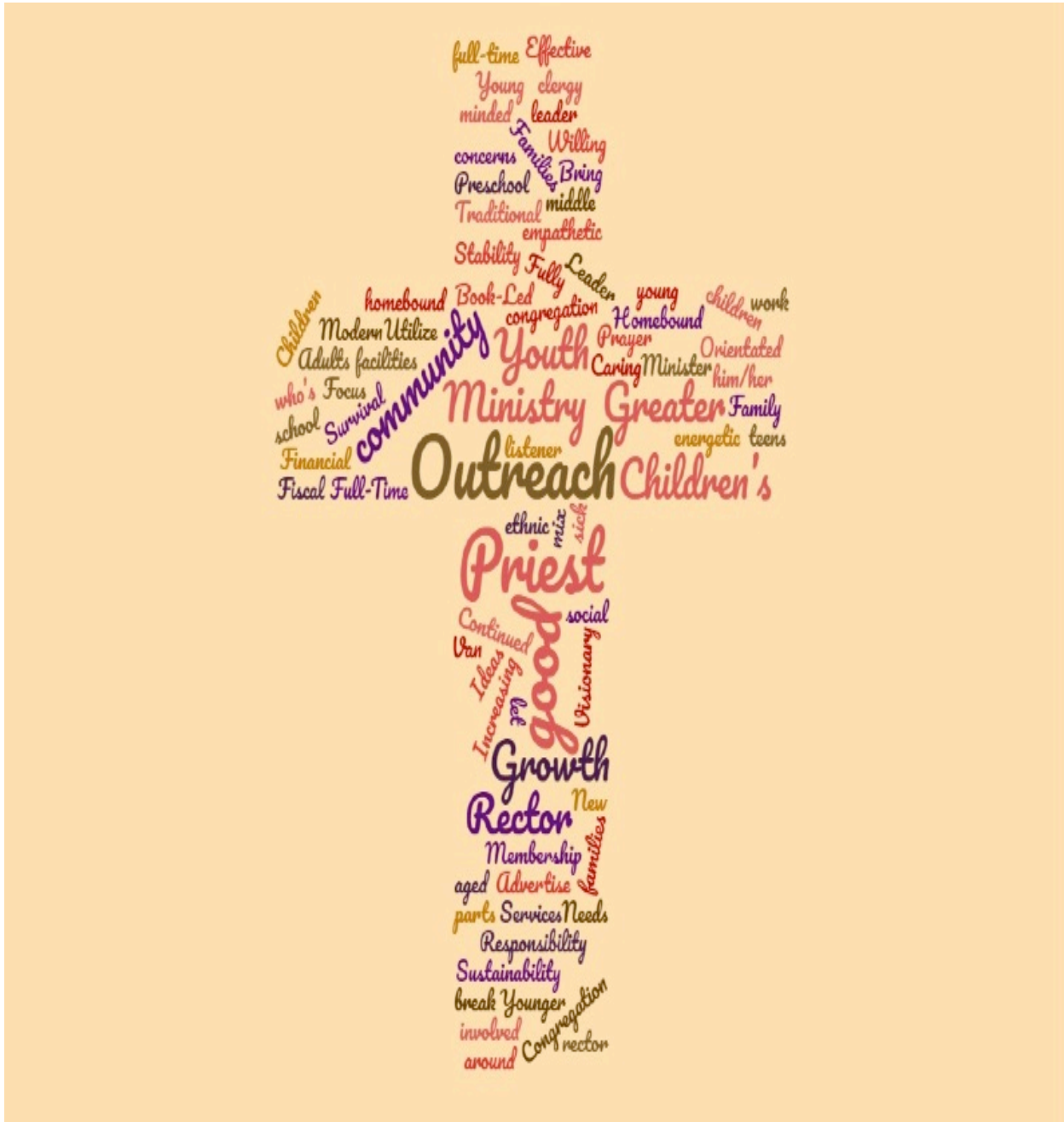
## Birthday/Blessings Box

In 1985 we began an outreach program by collecting money each Sunday in honor of birthdays, anniversaries, and/or special occasions. The birthday box is a wonderful way to share our blessings with the Community. In 2018 we collected \$849.00. The money collected was distributed to schools and organizations in Wickenburg to help children.



## Desired Qualities Sought of our Rector

The attributes and character strengths we are seeking in a rector are based on a recent Day of Discovery in which St. Alban's parishioners had the opportunity to voice opinions, wants, and needs for our future.



## Information on Community

### The Community of Wickenburg

Located less than an hour away (54 freeway miles) from the hustle and bustle of modern Phoenix, Wickenburg, as one of Arizona's most western communities, stands guarded from the metropolitan masses. Wickenburg is an authentic Western community of about 7100 full-time residents, doubling that number during the winter months when many "visitors" flee the colder weather of their "home" states.

2000 Census,	5,082 in town
2005 Census,	6,077 in town
2010 Census,	6,363 in town
2016 Maricopa Association of Governments' (MAG),	7,004 in town

### 2017 POPULATION ESTIMATES

0-17 YEARS	2030	18%
18-44 YEARS	2840	26%
45-64 YEARS	2738	25%
65+ YEARS	3440	31%
TOTAL	11,048	

The population of Wickenburg is expected to increase by at least 6% by 2022

### Schools

The Wickenburg Unified School District oversees the education of the students at all grade levels. There are a wide range of sponsored activities from sports to arts and music. Youth needs are met with sports teams, two multi-use park facilities, a public swimming pool and a skate board park.

Wickenburg Christian Academy is a private Christian school offering Preschool, K-6, and secondary (grades 7-12 in the classroom and online).

The surrounding area blends arid Sonoran Desert features like giant saguaro cactus and mesquite with the diverse riparian wildlife drawn to the verdant Hassayampa River Valley and the Hassayampa Preserve south of town. Nearby mountain ranges break the force of the desert winds.



During the winter season, the abundant sunshine, aided by gentle warm winds, make the days delightfully temperate. The nights are crisp and so clear that the stars, moon and planets stand out in relief against the blue-black sky. During the summer the 2,100 feet

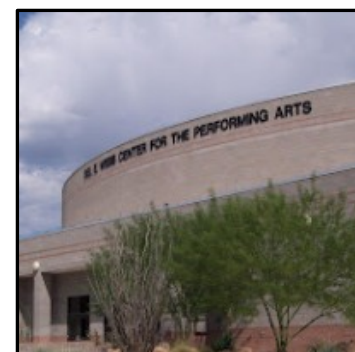
altitude, and clean dry air, provide a welcome relief from the high temperatures that plague Phoenix.

Month	Average Daily Minimum Temperature	Average Daily Maximum Temperature	Average Total Precipitation (inches)
January	31.2	64.5	1.16
February	34.3	67.9	1.22
March	38.4	73.3	1.04
April	43	81.5	0.49
May	50.4	90.6	0.17
June	58.7	100.2	0.13
July	69.6	103.6	1.29
August	68.7	101.1	1.90
September	60.5	96.2	1.12
October	48.5	85.7	0.65
November	37.7	73.7	0.75
December	31.5	65.4	1.18
Yearly Average	47.7	83.6	11.11

Wickenburg combines the friendly hospitality of an historic small town with a wide variety of services, shopping, cultural and recreational activities to meet the needs of every resident. Home to a substantial retirement community, Wickenburg is full of volunteers who are active in a variety of fraternal organizations including Lions, Rotary, Elk and Soroptimists.

The Del E. Webb Center for the Performing Arts, located on the campus of Wickenburg High School, specializes in bringing nationally and internationally known performers to town. It is also the performance venue used by community groups such as the Wickenburg Chamber of Commerce, Wickenburg Friends of Music and the Wickenburg Chamber Orchestra as well as the venue where local school band, choir and drama performances occur.

The Del E. Webb Center for the Performing Arts is also the home to Camp Imagination. Camp Imagination is a two-week summer arts camp designed to stretch the imagination of children by introducing them to a variety of art genres through an intensive hands-on program of activities that integrates technical, visual and performing arts mediums. Camp Imagination produces two sessions, both two-weeks long, culminating in a live theatrical performance starring over one hundred 1<sup>st</sup> through 12<sup>th</sup> grade students; either on stage as actors or behind the scenes as the film production and technical crews.



Community and family activities fill the calendar with western fun such as the Fourth of July Celebration, Fiesta de Septiembre, Wickenburg Fly-In and Classic Car Show, the Blue Grass Festival, Cowboy Christmas Poetry Gathering, Christmas Light Parade and Gold Rush Days. There are clubs to nurture every special interest as well as trails to hike, bike and ride; tennis; golf; and the opportunity to just relax and enjoy the wonderful desert air. Wickenburg, also known as The Team Roping Capital of the World is home to the renowned Desert Caballeros Western Museum.

Wickenburg is fortunate to have an excellent medical support system. A wide choice of doctors, dentists and chiropractors serve the community. Wickenburg Community Hospital offers efficient health care in the community with a 24/7 emergency department staffed by physicians, nurse practitioners, nurses and techs specializing in emergency medicine. Skilled nursing staff on the inpatient unit provide compassionate, individualized care, should hospitalization be necessary.

Inpatient care is managed by a hospital medicine physician, available 24/7. There is a state-of-the-art operating suite with doctors specializing in general surgery, orthopedic surgery, podiatric surgery



and gastrointestinal procedures. A wide array of diagnostic services are available including laboratory, x-ray, mammography, MRI scans, and CT scans. Outpatient and inpatient therapy services include physical therapy, occupational therapy and speech therapy. Life Line Ambulance is a short distance from the hospital and provides life-saving prehospital care to the community. An Air Evac helicopter sits outside the emergency department, ready to respond on a moment's notice to life-threatening emergencies in the community or to transport a critical patient from within the hospital to a facility providing the specialized care not currently available at the local hospital.

The Wickenburg Unified School District oversees the education of the students at all grade levels. There are a wide range of sponsored activities from sports to arts and music. Youth needs are met with sports teams, two multi-use park facilities, a public swimming pool and a skate board park.

### **History of Wickenburg**

Arizona Words like tradition and authenticity aren't just jargon and babble in Wickenburg. We are tradition. We are authentic. And Wickenburg fills a glorious chapter in the history of Arizona and the West.

And while the area's geological treasures attracted the miners from around the world, the Hassayampa River flood plain provided fertile soil for farming and ranching. For centuries, the western Yavapai (or Tolkapaya as they called themselves), made the banks of this oasis their home, irrigating their crops of corn, beans, squash, and tobacco with river water. They named this place Haseyamo, "following the water as far as it goes," from which the word Hassayampa derived. Though within the claimed territories, neither the Spanish Empire nor

the Mexican Republic ever extended their authority this far north. However, Hispanic culture and trade did reach the Yavapai tribe which was Wickenburg's first family. In the early 1820's, stalwart hunters and trappers explored the Hassayampa River in search of beavers, whose pelts were sold to hat makers back east and in Europe. Their reports helped pique American interest in the West. The Wickenburg area and much of the West became part of the United States following the Mexican American War in 1848. An 1862 gold strike on the Colorado River near present-day Yuma inspired hardy prospectors and miners, predominantly from California and Mexico, to search for minerals throughout central Arizona. The names of these Argonauts now grace many of the surrounding geographic landmarks, including the Weaver Mountains and People's Valley.

Among the gold searches was the adventurer, Henry Wickenburg. He came from far-off lands, lured by the dream of abundant gold. His quest was rewarded by the discovery of the Vulture Mine, where over \$30 million in gold has been dug from the ground. Throughout the foothills surrounding Wickenburg are relics of other mines that stand as a tribute to the pioneer miner and prospector. The mining lore of the region, past and present, adds much to the charm of the area. Ranchers and farmers who built homes along the fertile plain of the Hassayampa River accompanied the miners.

Many of the resourceful and committed settlers came from Sonora, Mexico, giving this area the distinction of being the northern edge of the Hispanic ranching frontier. Together with Henry Wickenburg and the miners, they helped found the young community of Wickenburg in 1863. The infant town went through many trials and tribulations in those first decades,



surviving Indian wars, mine closures, desperadoes, drought, and a disastrous flood in 1890 when the Walnut Creek Dam burst, killing nearly 70. Through it all, the town continued to grow. Its prosperity was issued with the coming of the railroad in 1895. The historic depot still stands today as the Wickenburg Chamber of Commerce and Visitor's Center. Along the town's main historic district, early businesses built beautiful structures

that still grace Wickenburg's downtown area. The abundant clean air and wide-open spaces attracted a whole new and exciting aspect of the Wickenburg neighborhood. Guest ranches offered a unique western experience to tourists who fell in love with the West. The Bar FX

Ranch became the first true guest ranch in 1923, followed by Remuda, Kay El Bar, Flying E Ranches, Rancho de los Caballeros, just to mention a few. The construction of the Phoenix to California highway (Highway 60) brought even more tourists, making Wickenburg the Dude Ranch Capital of the World.

Today, some of these ranches still offer their unique brand of Western hospitality and are among the

reasons True West Magazine recognized Wickenburg among the 10 best Western towns in the world.



The Hassayampa community became a vital contributor to America's patriotic war effort during World War II when the US Army trained thousands of men to fly gliders at a newly constructed airfield west of Wickenburg. After the War, modern pioneers and home builders developed Wickenburg into a splendid American community. Wickenburg of today is a modern town with over 600 businesses providing a full range of accommodations, services, shopping, conveniences, specialty shops and galleries for gifts of western distinction.

Today Wickenburg is known for its clean air, wide-open spaces, guest ranches, tourism and medical services sector. It was the Dude Ranch Capital of Arizona with 4 ranches that still offer a unique Western experience ranging from a cozy adobe hacienda to a modern ranch resort complete with championship golf courses. Wickenburg is growing as a leader in the medical services sector with Remuda Ranch, for eating disorders and the Meadows for treatment of addictions.



SOURCE: Town of Wickenburg Greater Wickenburg Region Community Health Needs Assessment – December 2016

---

## Diocese

The Diocese of Arizona

St. Alban's is part of The Episcopal Diocese of Arizona. The diocese has 66 worshipping communities, which include campus chaplains for four university campuses.

The Rt. Rev. Jennifer A. Reddall

Jennifer A. Reddall was elected the Sixth Bishop of Arizona on October 20, 2018 at All Saints' Episcopal Church in Phoenix. She was consecrated at Church for the Nations in Phoenix, on March 9, 2019 and seated on April 7, 2019 at Trinity Episcopal Cathedral.



The diocesan office is located at 114 W. Roosevelt St. in Phoenix, Arizona.

Their Mission: We exist to encourage and connect leaders as they grow Christ's Church

Our experience with the diocese is a positive one. The diocese has a wealth of opportunities and support available to assist us in our endeavors.

## Our Church Organization

### St Alban's Bishop's Committee

Senior Warden Kelly Ryan  
Junior Warden Dave Iwanski  
Treasurer John Carr  
Tom Foster  
Patti Gliniski  
Deb Poteet  
Sam Stephens  
Pat Stewart  
Clerk Ellen Richards

Members are elected for a three year term with the exception of the Senior Warden, who is appointed by the Rector for a one year term, and the Junior Warden who is elected by the parish for a one year term.

**And many volunteers who  
participate on a regular basis**

Acolytes  
Altar Guild  
Choir  
Lay Readers  
Eucharistic Ministers  
Ushers

### St Alban's Paid Staff

Vicar Ron Keel  
Organist Janelle Downing  
Office Manager Ellen Richards  
JDP Accounting Brenda Patton  
Custodian Debbie Brinkman

### Deacon

The Rev. Debra Loder