

# Box Score Report

DHS vs SMCHS - Jan 8, 2019 - L 43-66

## Period Stats

Team	1	2	Final
DHS	21	22	43
SMCHS	34	32	66

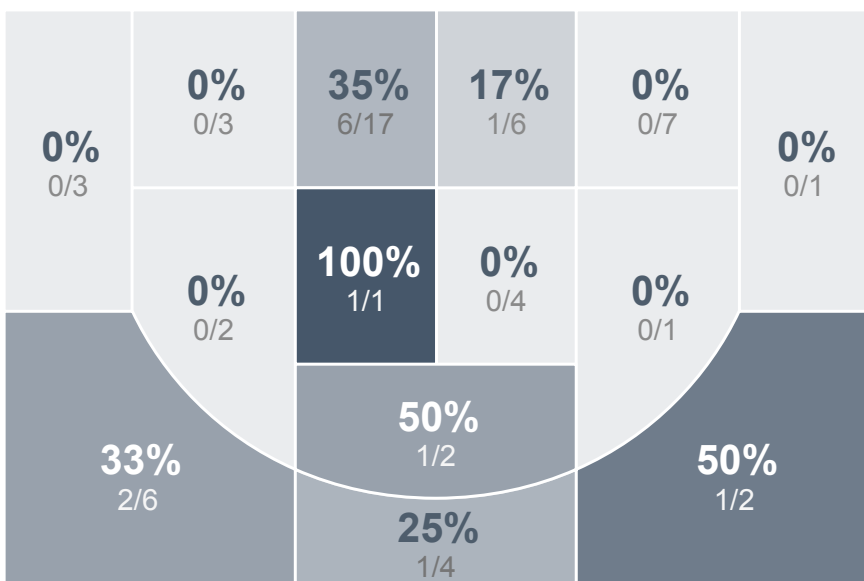
## Run Graph



## Team Stats

	DHS	SMCHS
Field Goal %	22.0%	46.4%
Effective Field Goal %	25.4%	49.1%
2FG Made/Attempted	9/43	23/49
2FG%	20.9%	46.9%
3FG Made/Attempted	4/16	3/7
3FG%	25.0%	42.9%
FT Made/Attempted	13/21	11/19
Free Throw Percentage	61.9%	57.9%
Points Per Possession	0.61	0.93
Transition Points	6	17
Points Off Turnovers	14	15
Second Chance Points	4	10
Points in the Paint	16	0
Offensive Rebounds	14	16
Defense Rebounds	20	35
Assists	8	0
Deflections	8	3
Steals	13	1
Blocks	1	8
Turnovers	15	22
Personal Fouls	18	20
Charges Taken	0	0

## Dickinson



## Dickinson's Player Stats

Name	Pts	FG	3FG	FT	+/-	MINS	OREB	DREB	AST	DEFL	STL	BLK	TO	FOUL	CHG
#2 Symone Beld	5	1/7	0/2	3/5	-18	34	1	5	3	0	2	1	3	1	0
#4 Kendryn Bullinger	3	1/8	1/4	0/0	-13	21	1	2	0	0	1	0	0	2	0
#10 Madison Lindley	0	0/3	0/2	0/0	-14	15	3	0	0	0	2	0	1	3	0
#13 Sydney Binstock	0	0/0	0/0	0/0	-2	1	0	0	0	0	0	0	0	0	0
#22 Taylor Nelson	0	0/1	0/0	0/0	-11	8	0	0	0	0	1	0	1	1	0
#24 Audrey Rodakowski	4	2/8	0/1	0/4	-24	33	1	2	1	2	1	0	0	3	0
#30 Gabrielle Jung	23	7/23	2/5	7/8	-14	28	0	4	2	4	2	0	5	4	0
#32 Paige Balliet	5	1/5	0/0	3/4	-11	28	5	2	1	2	3	0	3	2	0
#40 Reese Hauck	0	0/1	0/1	0/0	-2	1	0	0	0	0	0	0	0	0	0
#42 Taya Hopfauf	3	1/3	1/1	0/0	-6	13	0	2	1	0	1	0	2	2	0