

12 Year Lake Arrowhead Bass Catch 2014-2025

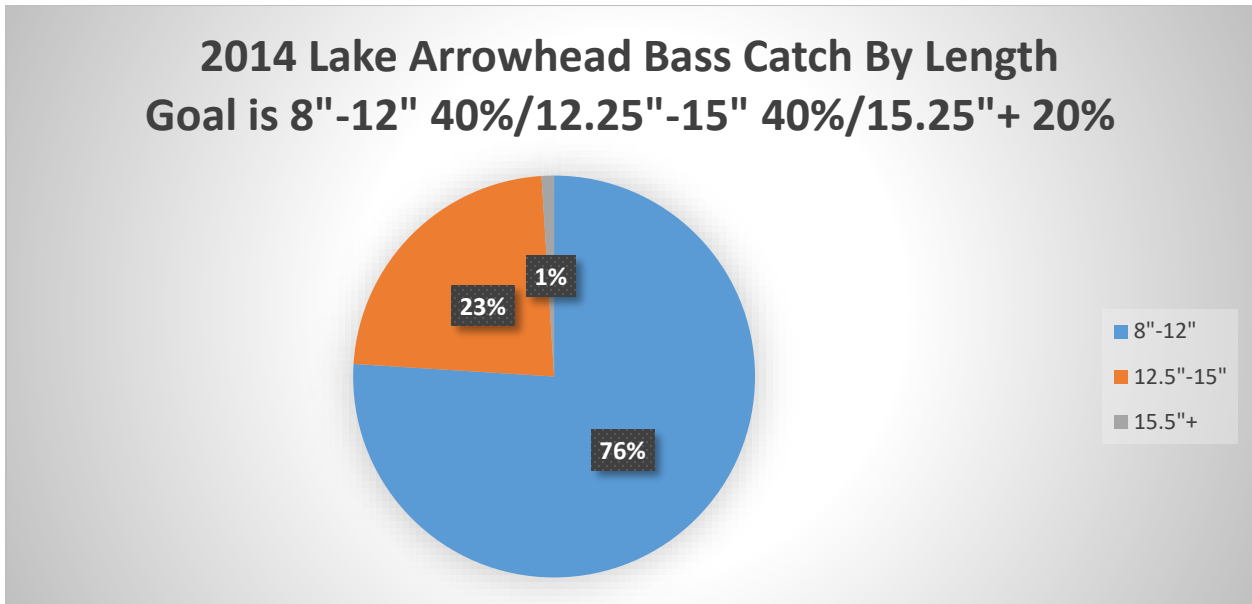
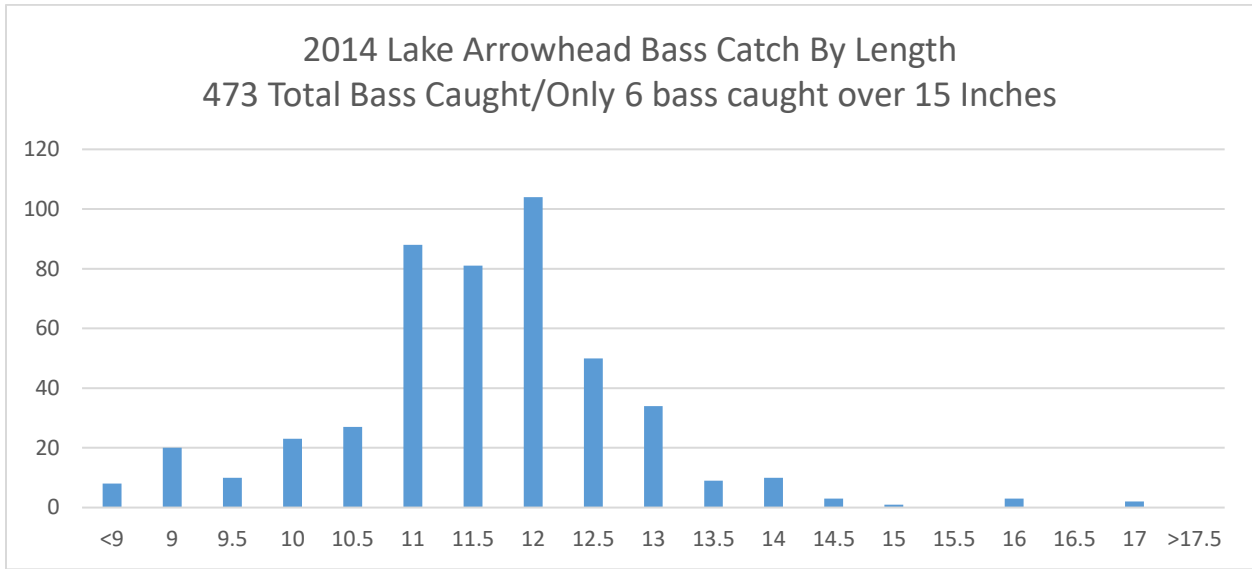
<u>Year</u>	<u>Fishing Days</u>	<u>Total Bass</u>	<u>Bass Caught Per Trip</u>	<u>Bass Harvested</u>
2014	20	600	30	0
2015	16	369	23	30
2016	28	717	25	117 (16.3% of total)
2017	31	691	22	147 (21.3% of total)
2018	20	430	21	85 (20% of total)
2019	18	208	11.5	9 (4% of total)
2020	24	261	11	0
2021	18	472	26	0
2022	21	578	27	101 (17% of total)
2023	13	254	19.5	50 (19% of total)
2024	16	254	16.3	0
2025	21	184	8.76	0
12 Year Total	246	5018	20.39	539 (10.74% of total)

***Days fished/total bass/bass catch/bass harvested # are for Adam Bueltel catch only/not all anglers.**

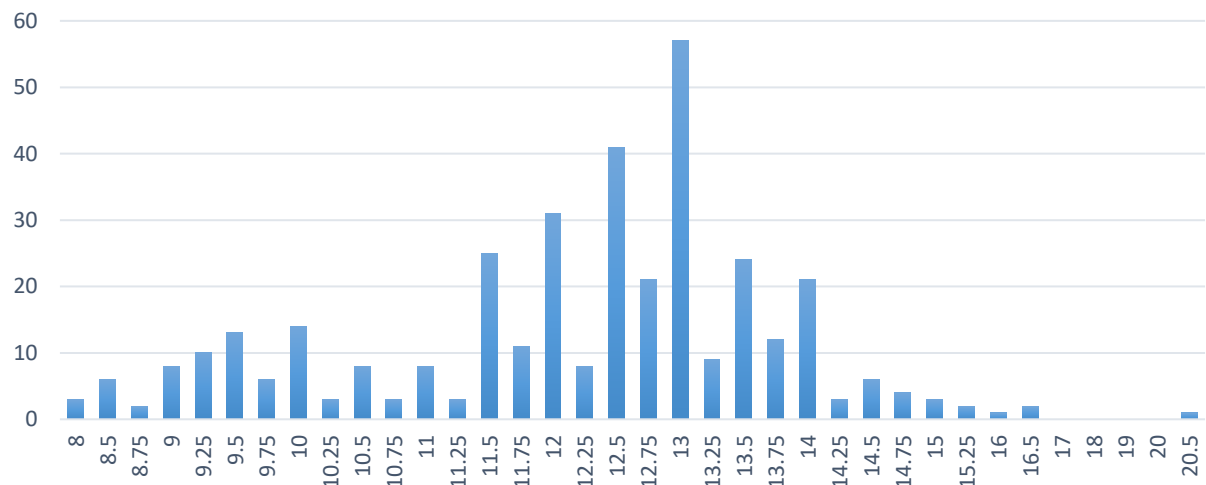
***Bass Harvest Permit needed to harvest largemouth bass under 15" minimum length limit for Nebraska Private Waters.**

<u>Year</u>	<u>Average Length</u>	<u>Average Weight</u>	<u>Average RW%</u>	<u>% of bass caught over 15+inch</u>
2014	?	?	?	1.2%
2015	12.01 inch	.90 lbs.	?	2.4%
2016	12.37 inch	.97 lbs.	91.3%	6.69%
2017	12.80 inch	1.09 lbs.	91.4%	12.5%
2018	13.23 inch	1.15 lbs.	88%	16%
2019	13.69 inch	1.43 lbs.	101%	20%
2020	13.06 inch	1.28 lbs.	100%	26%
2021	13.00 inch	1.30 lbs.	101%	24.5%
2022	13.16 inch	1.25 lbs.	103%	17%
2023	13.67 inch	1.43 lbs.	105%	17%

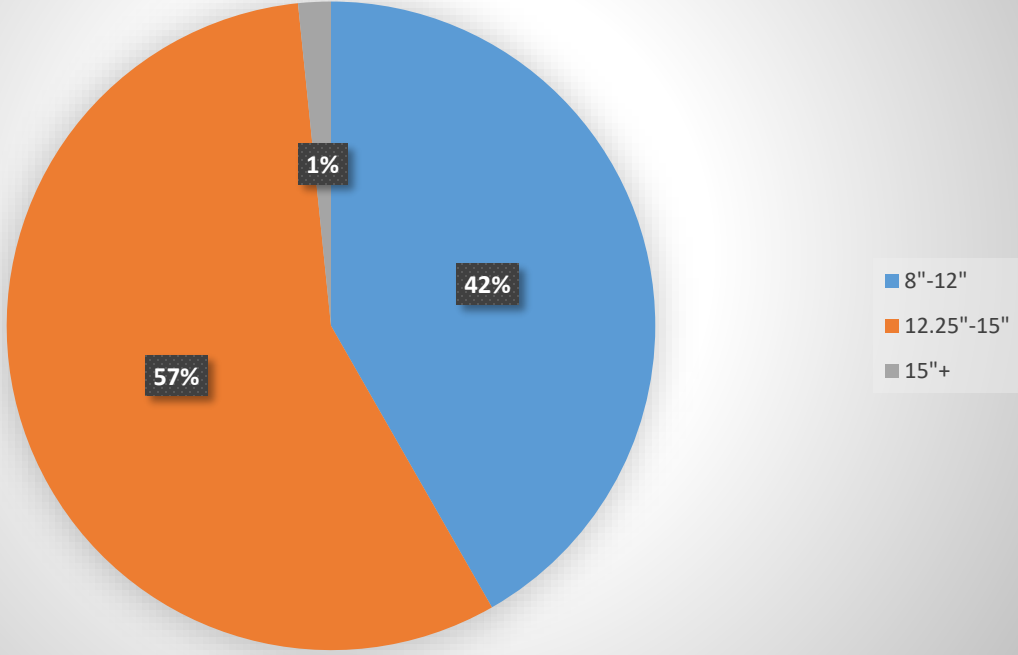
<u>Year</u>	<u>Average Length</u>	<u>Average Weight</u>	<u>Average RW%</u>	<u>% of bass caught over 15+inch</u>
2024	13.87 inch	1.53 lbs.	107%	25%
2025	13.68 inch	1.40 lbs.	102%	29%



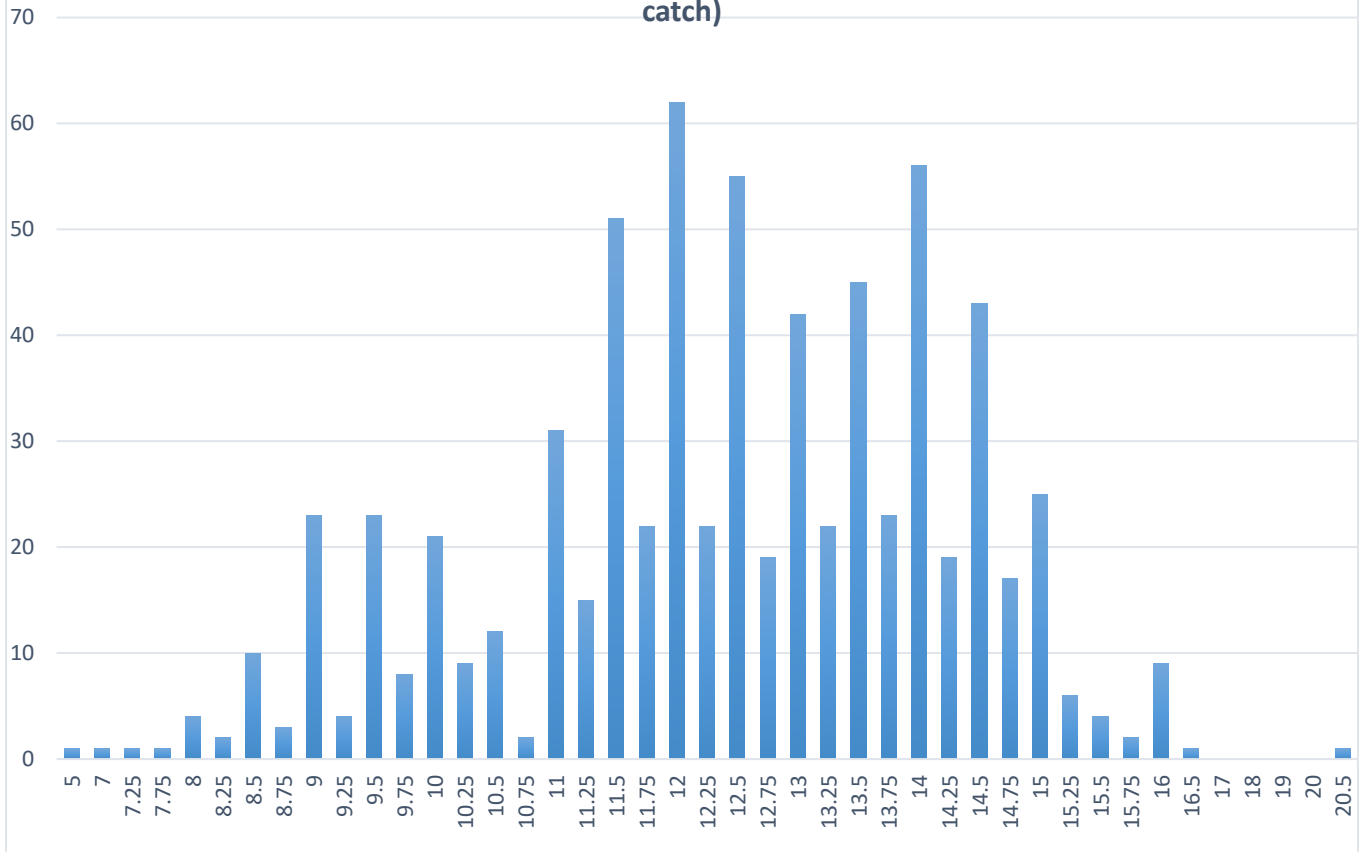
2015 Lake Arrowhead bass catch by length 369 total bass



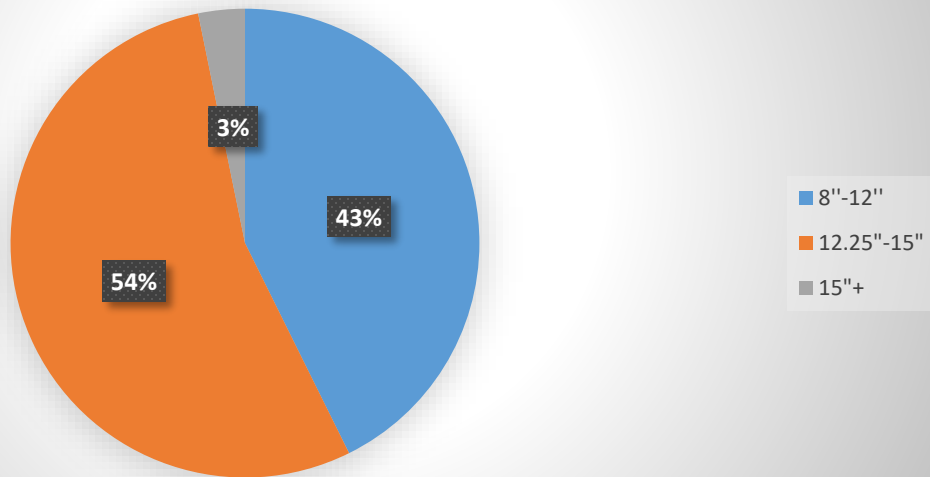
2015 Lake Arrowhead bass catch by length
Goal is 8"-12" 40%/12.25"-15" 40%/15"+20%



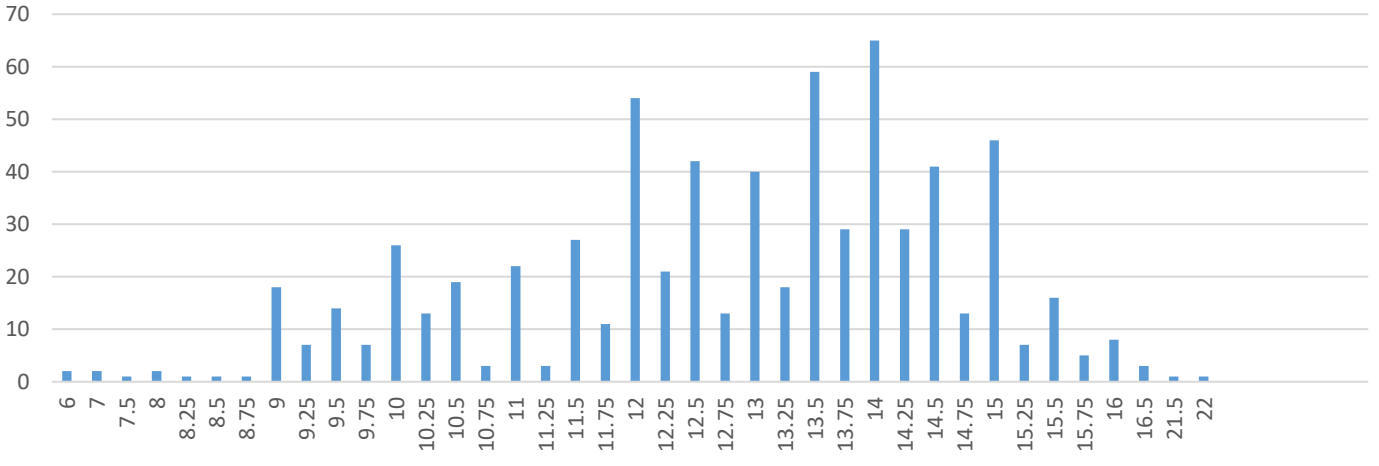
2016 Lake Arrowhead Bass catch by length
717 Total Bass/Relative Weight is 91.3%/Goal is 95-100%
123 of 695 bass weighed were at 100% or better relative weight (17 % of total catch)



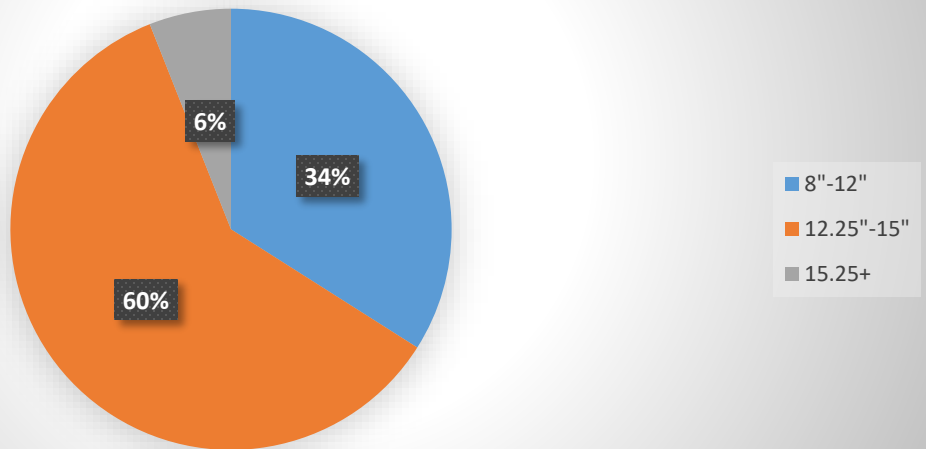
2016 Lake Arrowhead bass catch by length
Goal is 8"-12" 40%/12"-15" 40%/15"+ 20%



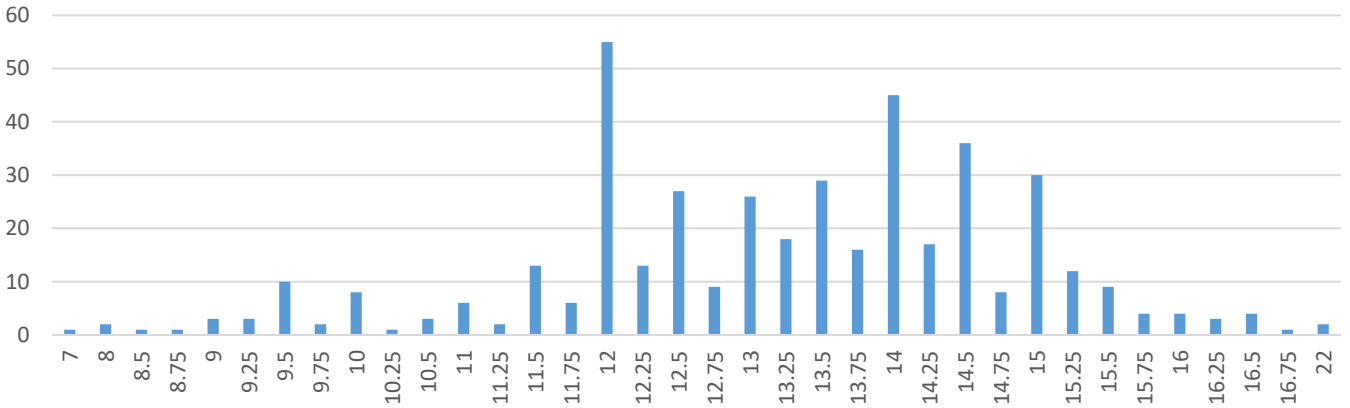
2017 Lake Arrowhead Bass Catch By Length
 691 Total Bass/Relative Weight is 91.4%/Goal is 95-100%
 134 of 691 bass weighed were at 100%+ relative weight (19.3% of total bass catch)
 Average bass length was 12.80 inch, Average lbs. was 1.09



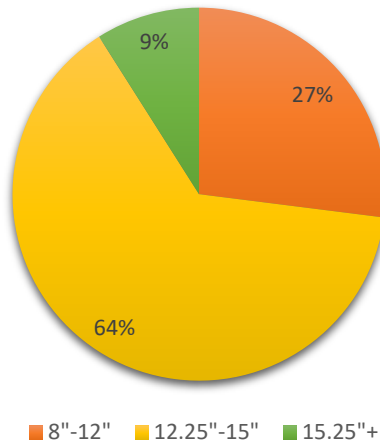
2017 Lake Arrowhead Bass Catch By Length
 Goal is 8"-12" 40%/12.25"-15" 40%/ 15.25+ 20%



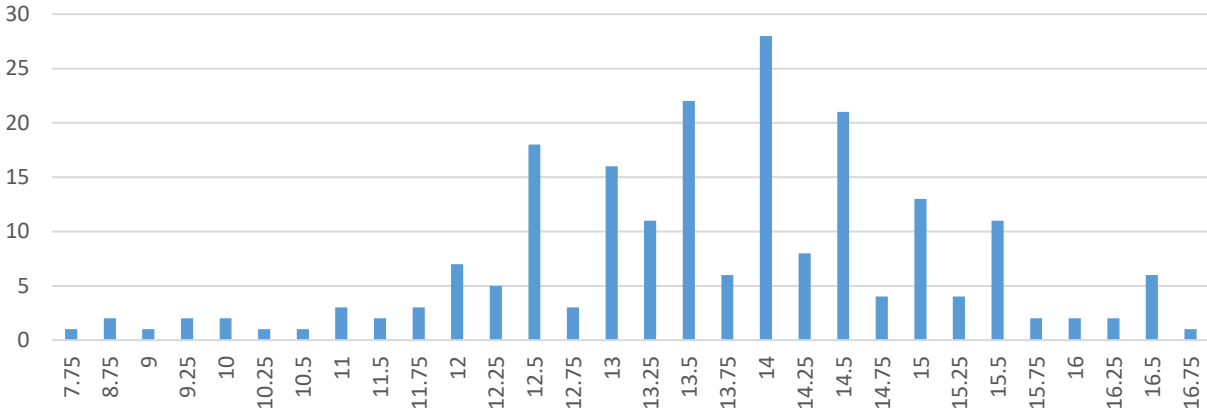
2018 Lake Arrowhead Bass Catch By Length
 430 Total Bass/15+Inch bass (69) 16.02% of total catch
 2017 15+ Inch bass (87) 12.5% of total catch
 2016 15+ Inch bass (48) 6.6% of total catch
 2015 15+ Inch bass (9) 2.4% of total catch
 Largest bass/22 inch (2)



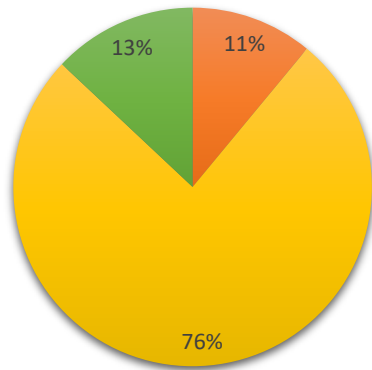
2018 Lake Arrowhead bass catch by length/430 Total Bass
 Goal is 8"-12" 40%/12.25"-15" 40%/15.25+ 20%



2019 Lake Arrowhead Bass Catch By Length
 208 Total Bass Caught/Avg Length-13.62 in, Avg lbs.-1.43 lbs.,
 Avg RW-101%
 20% of bass over 15+ Inches

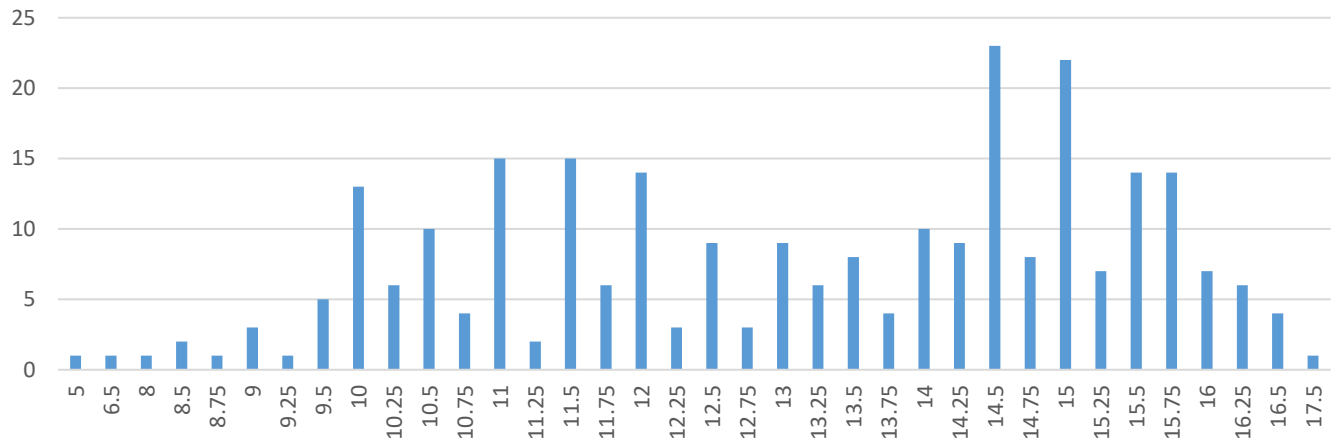


2019 Lake Arrowhead bass catch by length/208 Total Bass
 Goal is 8"-12"=40%/12.25"-15"=40%/15.25"+=20%

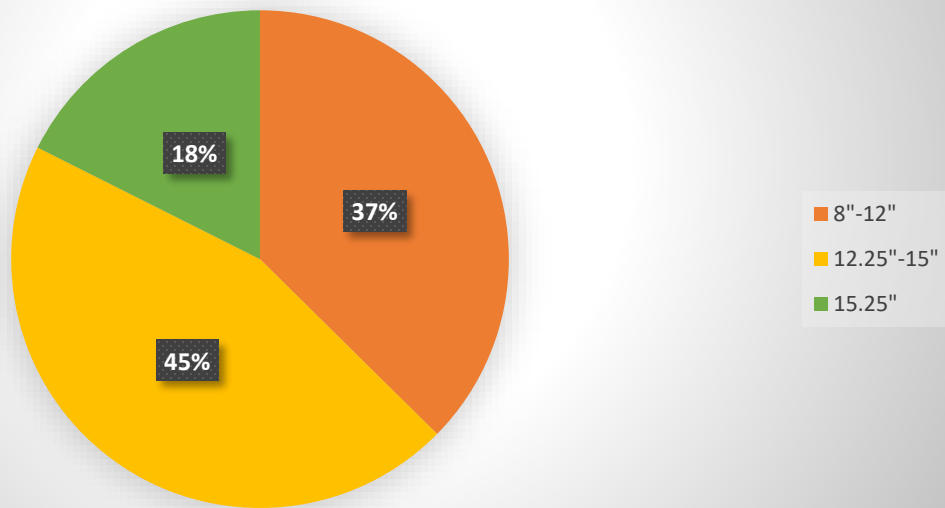


■ 8"-12"
 ■ 12.25"-15"
 ■ 15.25"+

2020 Lake Arrowhead Largemouth Bass Catch By Length
 261 Total Bass 13.06 Inch Avg. Length/1.28 lbs Avg. Weight
 100% Avg Relative Weight (RW)
 69 Bass over 15+ inches=26% of total bass catch
 19 Bass over 16+ inches=7% of total bass catch



2020 Lake Arrowhead L. Bass catch by length/261
 Largemouth Bass Goal is 8"-12"=40%, 12.25"-
 15"=40%, 15.25"+=20%

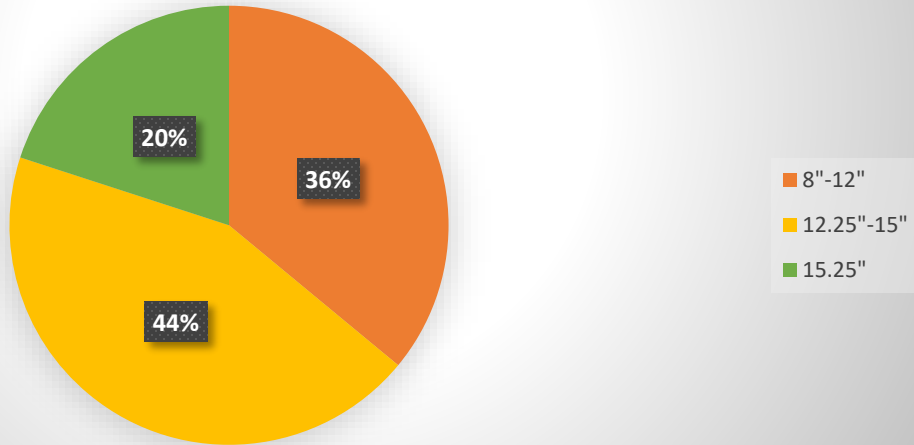


2021 Lake Arrowhead L. Bass catch by length

472 Largemouth Bass

Goal is 8"-12"=40%, 12.25"-15"=40%,

15.25"+=20%

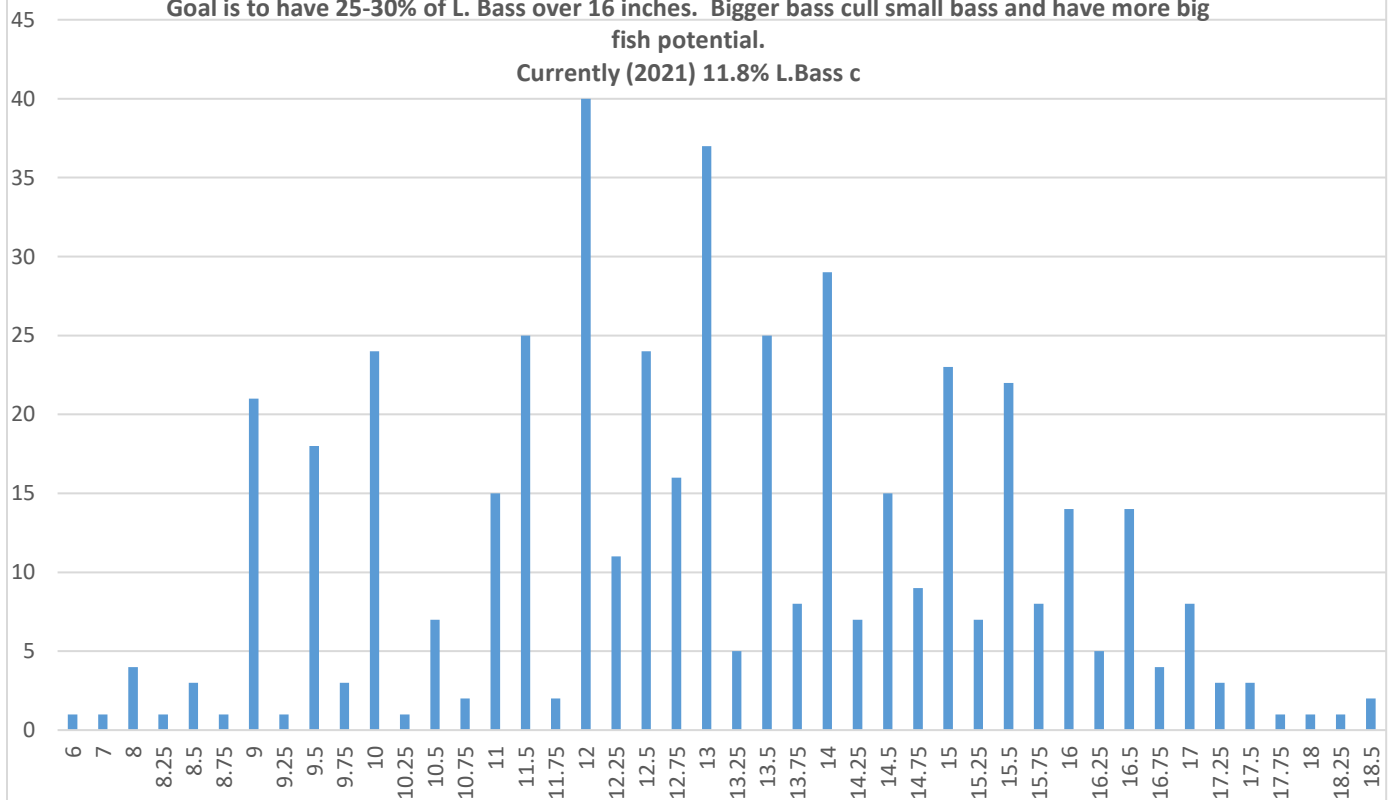


2021 Lake Arrowhead L. Bass catch by length

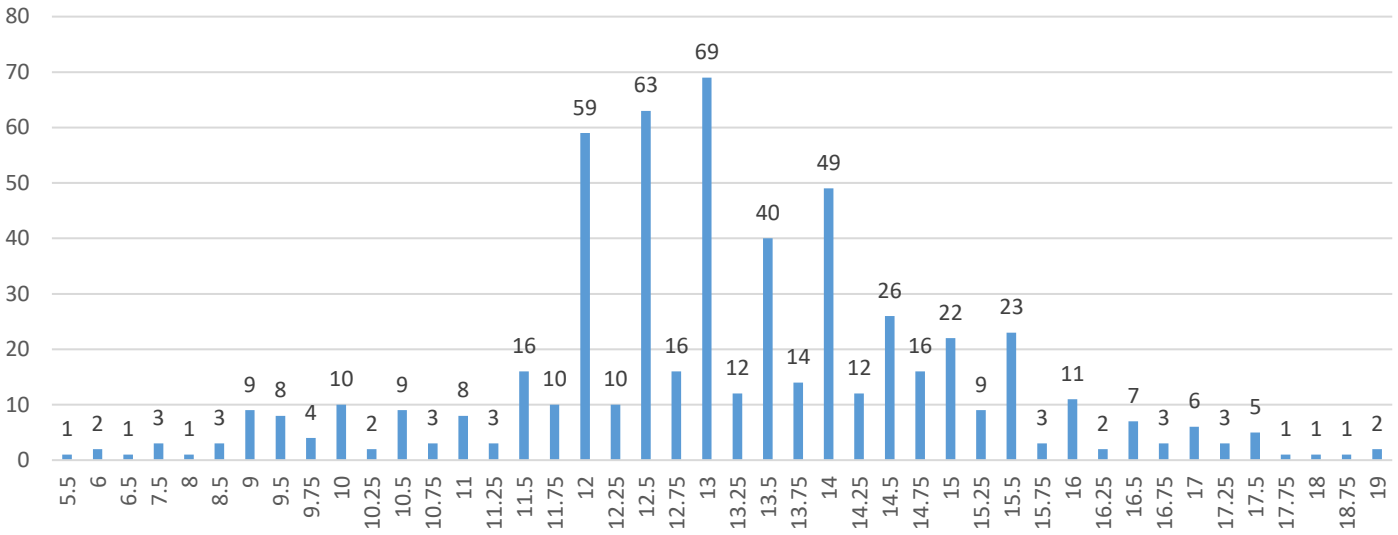
472 bass caught, avg. length 13 in. avg weight 1.30 LBS., Avg RW-101%

Goal is to have 25-30% of L. Bass over 16 inches. Bigger bass cull small bass and have more big fish potential.

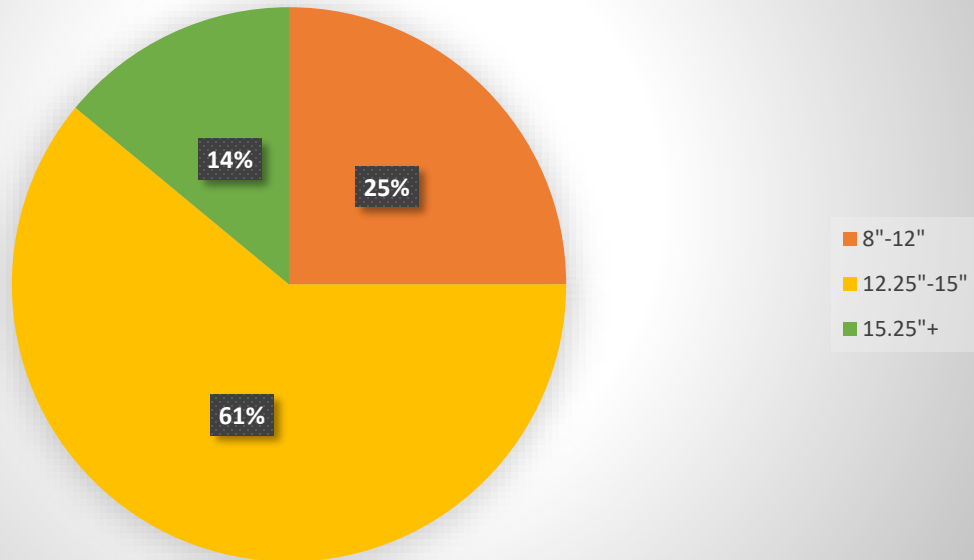
Currently (2021) 11.8% L. Bass c



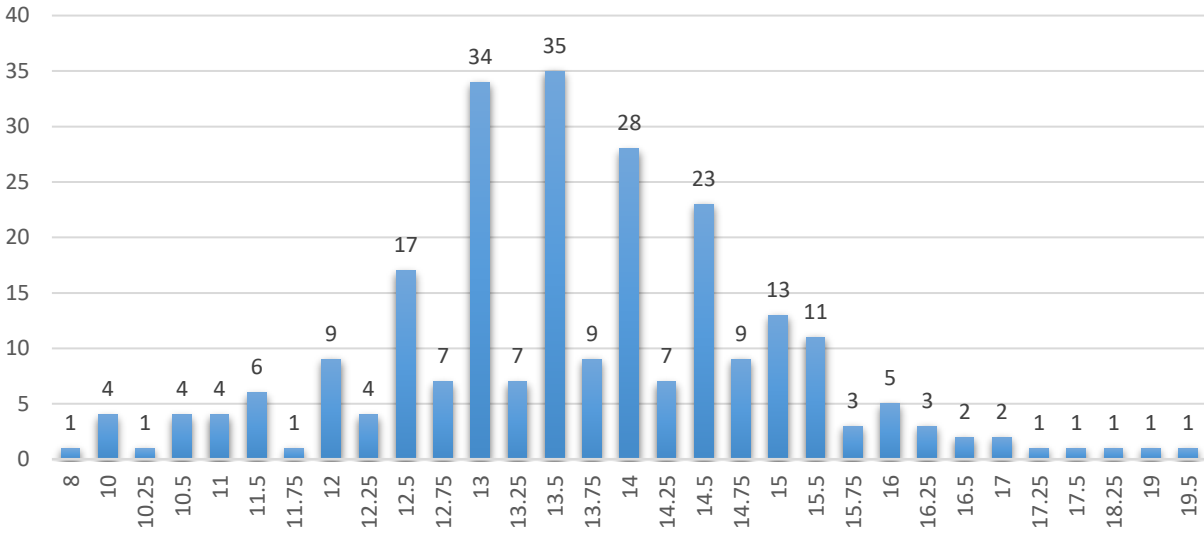
2022 Lake Arrowhead L. Bass catch by length
578 bass caught, avg. length 13.16 in., avg weight 1.25 lbs, Avg RW-103%
Goal is to have 25-30% of L. Bass over 16 in. Currently (2022) 7.3% of L. Bass over 16+ in.



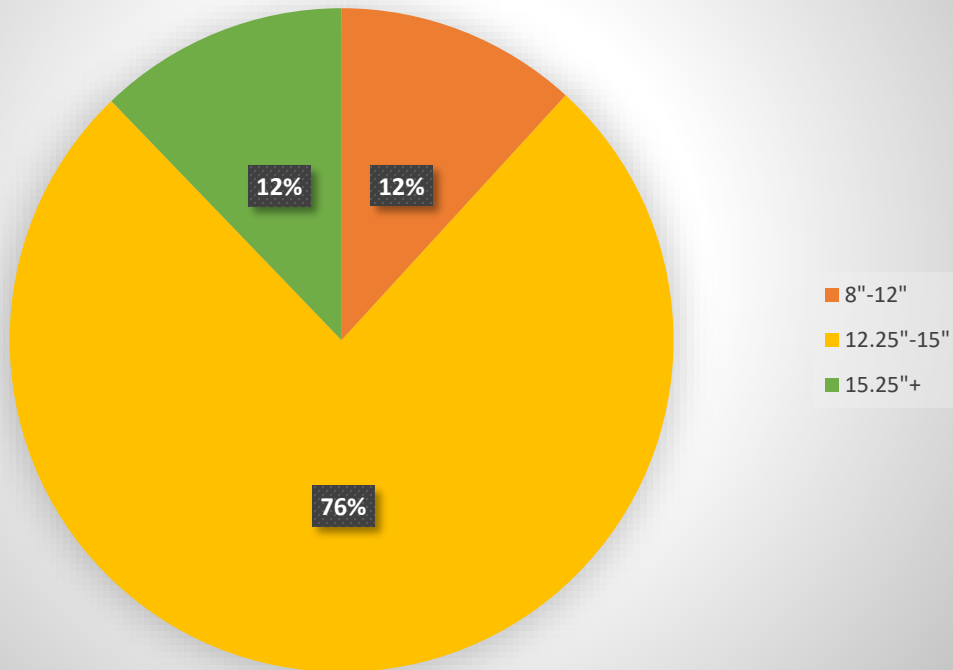
2022 Lake Arrowhead L. Bass catch by length
578 Largemouth Bass
Goal is 8"-12"=40%, 12.25"-15"=40%, 15.25"+=20%



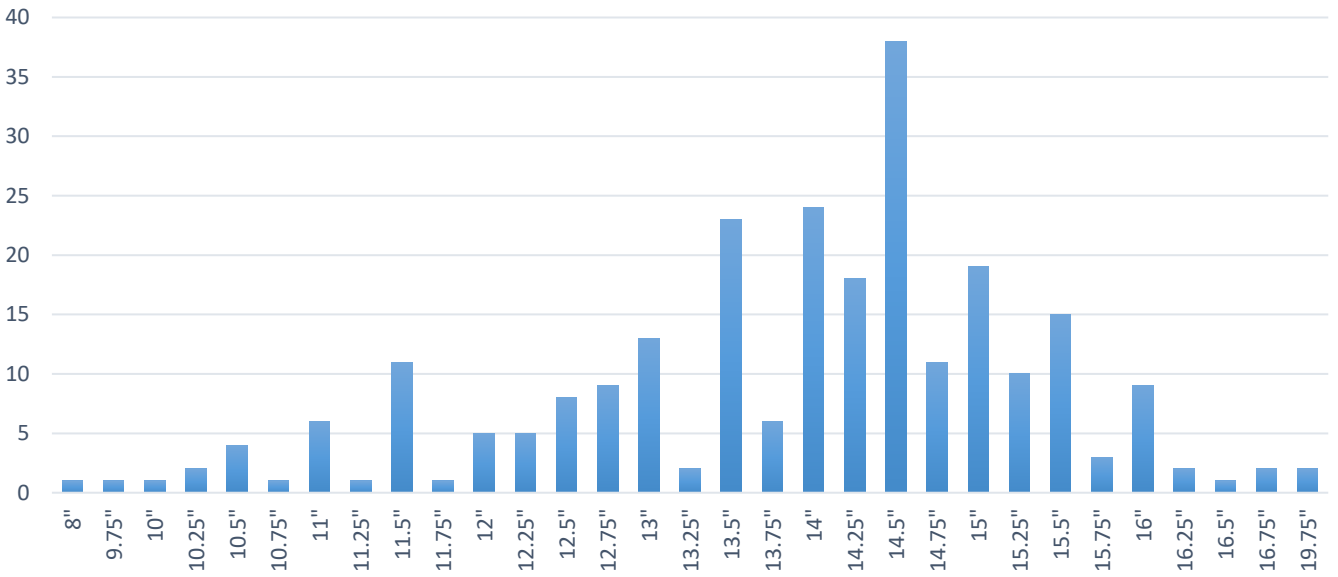
2023 Lake Arrowhead L. Bass catch by length
254 bass caught, avg. length-13.67 in., avg. weight-1.43
lbs. avg. RW%-104



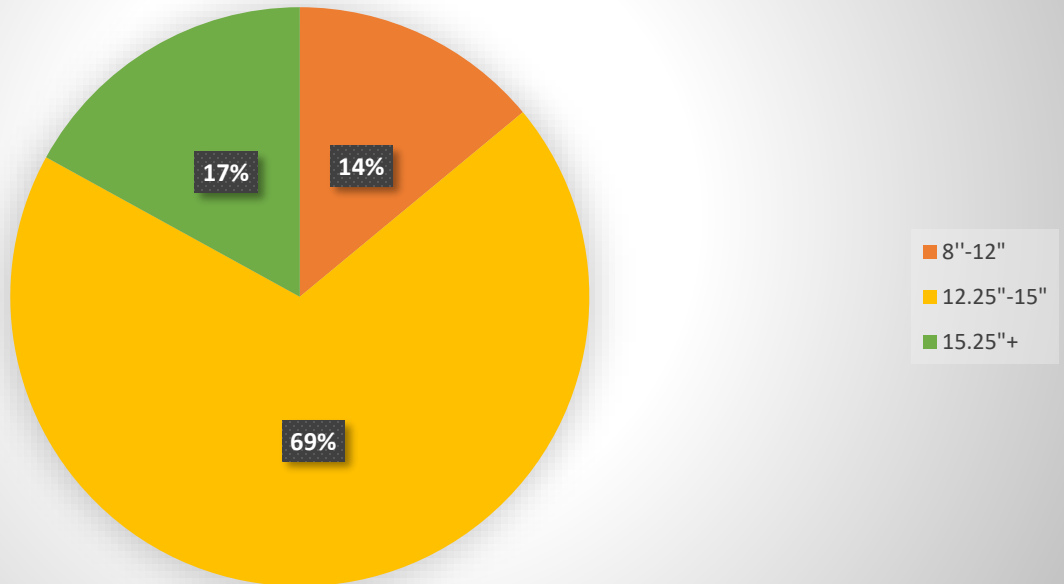
2023 Lake Arrowhead L. Bass catch by length
254 L. Bass
Goal is 8"-12"=40%, 12.25"-15"=40%, 15.25"+=20%



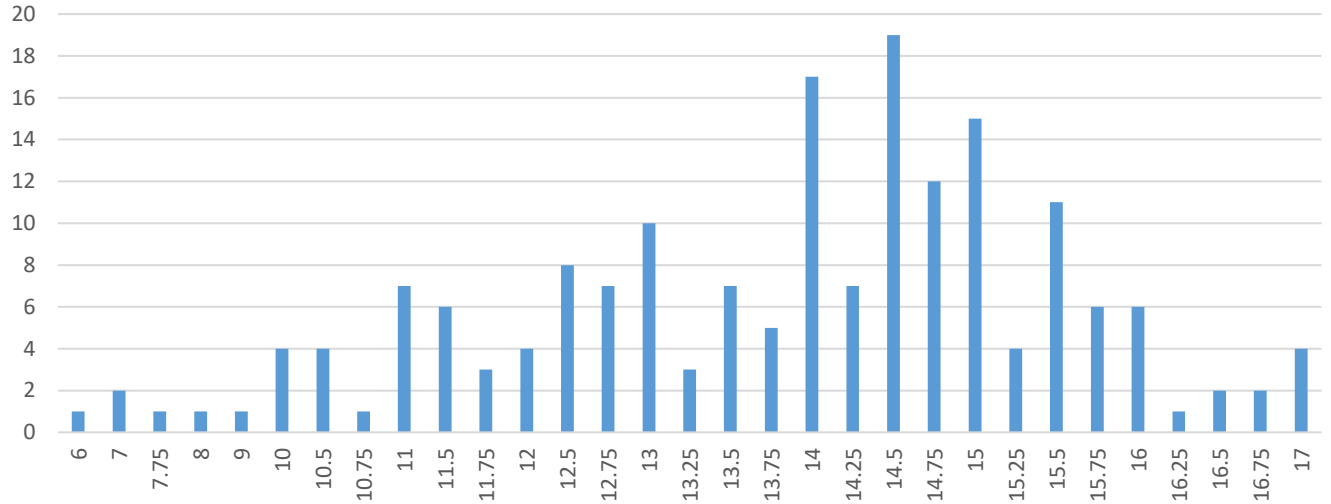
**2024 Lake Arrowhead LM Bass catch by length
(254 bass) Avg. length 13.87 in., Avg. weight 1.53 lbs.**



**2024 Lake Arrowhead LM Bass catch by length
(254 bass total) 25% of bass caught over 15"
Goal is 8"-12"=40%, 12.25"-15"=40% 15.25"+ =20%**



2025 Lake Arrowhead Largemouth Bass catch by length
184 Total Bass, avg. Length=13.68 inch, avg lbs.=1.40%
Avg. RW 102%



2025 Lake Arrowhead L. Bass catch by Length
29% of L. Bass over 15 inches

