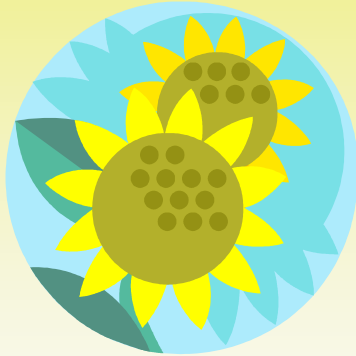


TSRA

TELLURIDE SKI RANCHES ASSOCIATION

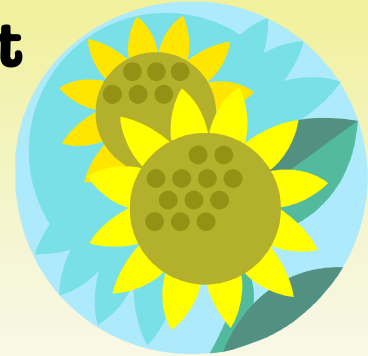
ANNUAL MEETING & COMMUNITY BBQ



Sunday, July 1st

Annual Meeting

11 a.m. (new time)



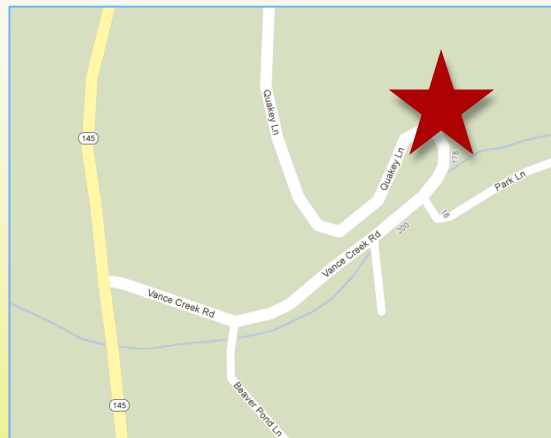
&

Community BBQ & Potluck

NOON

Beer, soda, water, hamburgers, hot dogs, & veggie burgers provided.

Please bring appetizer, side dish, snack or dessert to share.



Vance Creek Open Space

From Vance Creek entrance

Go straight up Vance Creek Rd. about ¼ mi. until road turns left into Quakey Ln

Look for the big white tent!





Stage 2 Fire Restrictions In Place as of June 4th

“In my 38 years as Sheriff, this is the most severe drought I’ve seen in our county. People need to be vigilant and take fire risk seriously.” – Bill Masters

Stage 2 Fire Restrictions on private land in San Miguel County Colorado include:

- Building, maintaining, attending or using an OPEN FLAME, including fire, campfire, stove fire, charcoal grills and barbecues, coal and wood burning stoves, and devices (stoves, grills or lanterns) using liquid fuel such as white gas or kerosene. This prohibition applies to all public lands within San Miguel County.
 - Exception: Operating a stove, lantern, or other device using pressurized gas canisters (isobutene or propane) equipped with a valve that allows the operator to immediately turn the flame on and off.
- SMOKING.
 - Exception: Within an enclosed vehicle, trailer or building.
- WELDING or operating acetylene or other torch with open flame.
- Using an EXPLOSIVE. This includes but is not limited to fuses or blasting caps, fireworks, rockets, exploding targets, and tracers or incendiary ammunition.
- Operating a CHAINSAW without an approved spark arresting device, a chemical pressurized fire extinguisher (8 oz. capacity by weight or larger and kept with the operator) and a round point shovel with an overall length of at least 35 inches readily available for use, or outside of the restricted hours of 5am – 1pm.
- All TARGET SHOOTING – To include Discharging a FIREARM, air rifle, or gas gun.
- Possessing or using a MOTOR VEHICLE OFF ESTABLISHED ROADS, motorized trails or established parking areas, except when parking in an area devoid of vegetation within 10 feet of the vehicle.

These restrictions will be in effect for 14 days and may be extended.

For more info go to: www.sanmiguelcountyco.gov/CivicAlerts
or contact Susan Lilly, Public Information Officer at 970-729-2028.



WATERLINE UPGRADE REPORT

The first stage of a multi-year replacement program of the Ski Ranches ‘main waterline’ is scheduled to be completed this summer. The 2018 scope of work is focusing on upgrades at the water tank area and a new ‘larger’ line connecting to existing lines on Upper Saddle Horn Lane and Ridge Road. The larger line and double routing of delivery will immediately increase flow capacity from the tank area and delivery options with the new loop feed design. Overall, the plan includes new water mainline installation with a stub out to the ‘curb stop’ of each lot. Included will be specific replacement of shut off valves and pressure relief valves (PRV’s) as engineering plan calls for. Stay tuned for additional details as they are announced.





Increased Water Restrictions effective June 1st

The Ski Ranches water provider, Town of Mountain Village, has imposed the following:

- All properties may water their landscaping on **Tuesdays, Thursdays, and Saturdays ONLY**. Irrigation clocks must be set to run at a level of **70-75% of regular** water consumption for the three days a week you are allowed to water. Irrigating hours will be either **before 8 a.m. or after 7 p.m.**
- All exterior water features must be turned off during this conservation effort.
- Due to potential water contamination "cross-connection" occurrences, NO trucked in water will be allowed to be hooked up to existing irrigation systems.

New Landscaping:

- All permits for new landscaping or additions or changes will be reviewed on a case-by-case basis by the Town of Mountain Village.

If the weather conditions do not cooperate, a ban on all outside watering may result.

Fines start at \$100/day so be sure to stay informed at:

www.townofmountainvillage.com/residents/water-conservation

2018 Chipping Program Sign-up deadline July 4th

- Up to 30 minutes per property- includes set-up and break-down time.
- Wood to be chipped should be stacked at end of driveway close to main road, with materials placed in one direction.
- Logs must be a diameter of 8-10" or less. Long, but manageable pieces are best.
- No materials will be hauled offsite.
- Owners do not need to be present.
- Owners cannot transfer their time slot to another Owner.
- Unacceptable materials include: processed (lumber), root-balls, rocks, PVC, dirt nails and any non-wood material.
- NOTE: Depending on location of materials and proximity to chipper placement, materials will be spray spread from chipper or piled.
- *ALL chipping piles must be spread to less than 3" high by Sunday July 29th.*

Please email your name and property address to HOA@SkiRanches.com or call 970-233-0902 to sign-up.

Want more wildflowers? Control Your Weeds!

Noxious weeds present in San Miguel County that the State of Colorado recommends stopping the spread of include: Oxeye Daisies, Hoary Cress (Whitetop), Sulfur Cinquefoil, Yellow Toadflax (Eggs & Butter), Russian Thistle, Common Mallow, Foxtail Barley and Kochia. To request a full color list with all control options, from appropriate herbicides to recommendations for weeding, please contact Admin. Asst. Lynette Foley at HOA@SkiRanches.com or 970-233-0902.



Volunteers Needed for New Covenant Review Committee

The Board has approved creation of a committee to review the TSRA governing documents. If you wish to volunteer, please contact Admin. Asst. Lynette Foley at HOA@SkiRanches.com or 970-233-0902.

Like a Healthy Forest? Treat Your Infected Trees

CU Extension recommends treating Western Spruce Budworm during the two to three weeks immediately following bud-break or flush of new growth – usually in June. Commonly infected species includes Douglas Fir, White Fir, Englemann Spruce & Blue Spruce.

Budget & Road Reserve Fund Election Results

Once again the 2018 budget & road reserve fund did not pass due to a lack of quorum. The last successful election was in 2016 so the approved budget and road reserve amounts of 2016 were carried over to 2018 as a result.

The next election will be held in November (one month earlier) with a mid-election ballot count and phone calls to all owners not voted yet. Hopefully this will result in a quorum. If you would like to help make phone calls in mid-November please contact Administrative Asst. Lynette Foley at HOA@SkiRanches.com or 970-233-0902 to volunteer.

Expect More Bears Due to Drought

Remember to

- Lock exterior doors and lower windows
- Secure trash & recycling
- Clean BBQ grills
- Keep food out of vehicles
- Keep pet food indoors

DOG RULES REMINDER

“Dogs...may be kept for pleasure and not for commercial purposes, **provided that they do not become a nuisance** to other Lot Owners and/or occupants of property subject to the control of the Association” (TSRA Declaration: Section 5.7)

“**No contractor or other worker** shall be permitted to bring **dogs** into the Ski Ranches Subdivision.

“(DRC Regulations: 22 j)



TSRA STAFF CONTACTS

ADMINISTRATIVE ASST	Lynette Foley HOA@SkiRanches.com or 970-233-0902
FACILITIES MANAGER	John Knowles 970-275-3389 or jknowles@animas.net
ACCOUNTS MANAGER	Becky Ranta, CPA 970-728-3535 or rjr@telluridecolorado.net
DRC ADMINISTRATOR	Kurt Shugars 970-708-5212 or kurt@shugarscompany.com

