



10.12.22 *Maternal* REVIVAL sale BIGFORK, MT





Welcome to the Montana Maternal Revival Sale. Beginning this year, we have teamed up with our good friends at Coleman Angus in scheduling back-to-back sales in northwest Montana. Both sales will be loaded with the some of the best maternally-oriented genetics in the business.

The cattle on the pages which follow are the best and deepest set of Angus females we have offered to date. From the spring bred heifers and the summer yearlings to the cow-calf pairs and the proven embryo donors, you will be hard pressed to find another set of cattle with as much bred-in predictability and maternal performance backed by actual data. We are very cow-centric at Montana Ranch. Not just good cows, but the right cows which have proven to be prepotent for traits of importance to commercial cow-calf producers. From the first animal in the book to the last, you will see how we have stacked those cows in the pedigrees with clear intentionality.

We are leading off the offering with two of our best donors. Joanie 3063's story is just beginning to be written. Her son, Benchmark, continues to grow in popularity with each calf crop, while two of her young sons, Judgement and Jake, are as good as we've ever produced. Lot 4, Blackcap May 8552, is a unanimous favorite of visitors to the ranch. Both have worked very well in the embryo program, thus we are able to offer them while they still have many years of productivity ahead.

The bred heifer and summer yearling divisions are extremely deep. They are the next step in our breeding plan and are designed to be foundational breeding pieces. For those looking to go one step beyond, the select embryo packages offered represent the freshest genetics in our inventory. And certainly deserving special mention are the young cow-calf pairs. They are sound, productive and in the prime of their production.

Plan to join us in Montana on October 11-12 for two great female sales. While in the area, we encourage you to check out the local attractions like Glacier National Park, the National Bison Range and Flathead Lake. Until then, the cattle will be available for viewing at the ranch and videos of the cattle may be viewed at MontanaRanchAngus.com. We look forward to seeing you in Big Sky Country.

Montana Ranch • 1463 Hwy 83, Bigfork, MT 59911

David & Sandra Sabey • David Brown (406) 210-5605 • Matt Cottle
bulls@montanaranchangus.com • www.MontanaRanchAngus.com

MONTANA Maternal REVIVAL sale

AT THE MONTANA RANCH NEAR BIGFORK, MT • WEDNESDAY, OCTOBER 12, 2022 • 1:00 MDT

LOCAL AIRPORTS

Glacier Park Int'l Airport • Kalispell, MT • 30 minutes from Montana Ranch
Missoula Int'l Airport • Missoula, MT • 2 hours from Montana Ranch

LODGING

Please go to www.MontanaRanchAngus.com/female-sale for recommended local lodging in the Bigfork/Kalispell area.

SALE MANAGER

David Mullins, SaleRing.Live (317) 503-2798

AUCTIONEER

Roger Jacobs (406) 698-7686

MARKETING AGENTS

Scott Bohrsen, Bohrsen Marketing (403) 370-3010
Joe Fischer, Fischer Marketing (530) 392-0154
Rob Voice, Bohrsen Marketing (306) 270-6082
Kent McCune, McCune Marketing (817) 602-8629

RING STAFF

Kurt Kangas, Angus Journal (406) 366-4190
John Goggins, Western Ag Reporter (406) 698-4159
Devin Murnin, Western Livestock Journal (406) 696-1502

ANNOUNCEMENTS/UPDATES

Announcements from the sale block take precedence over any printed material.
Updates to the sale book will be provided prior to the sale.

SETTLEMENT

Payment will be in U.S. Dollars and is to be completed before cattle/embryos are shipped. Absentee buyers will receive invoice via email.

LIVESTOCK MORTALITY INSURANCE

James F Bessler (815) 762-2641

SALE DAY PHONES

David Brown, Montana Ranch (406) 210-5605
Matt Cottle, Montana Ranch (406) 253-8403

HERD HEALTH

All cattle are eligible for immediate shipment in the U.S. All cattle are current on recommended vaccinations/parasite control.

U.S. DELIVERY / PICKUP

Delivery to central points throughout the continental U.S. will cost a maximum of \$300 per live lot if brokered by Montana Ranch. The delivery fee will be added to the purchase invoice. We ask buyers to meet trucks at central points such as livestock markets to ensure safe and timely delivery.

Free nationwide delivery in the continental U.S. for buyers of three or more live lots.

For those buyers wishing to take their purchases on sale day, load out will take place after the conclusion of the sale.

CANADIAN DELIVERY

Canadian deliveries will be coordinated for one shipment to take place once health testing has been completed and entry permits secured. Delivery to centralized points in southern Alberta and Saskatchewan, including all health testing, permits and customs will not exceed \$300 USD.

FROZEN EMBRYOS

All frozen embryos are IVF with a 1/3 pregnancy guarantee. Embryos are stored at Trans Ova, Sioux Center, IA and shipping costs/coordination will be the responsibility of the buyer. Embryos will be released to the buyer once settlement has been completed.

LIABILITY

All persons attending the sale do so at their own risk. Neither Montana Ranch nor its agents assume liability for any accidents which may occur.

VIDEOS

Individual videos of each lot may be viewed at:
www.MontanaRanchAngus.com/female-sale.

the FEMALES

48 ELITE FOUNDATION FEMALES
12 FROZEN GENETIC LOTS

100% SATISFACTION GUARANTEED

Simply the best guarantee in the business.

SELECTED FROM THE HEART OF THE HERD

Top young donors, bred heifers and cow-calf pairs.

GENOMIC TESTED AND PARENT VERIFIED

100% of the offering genomic tested and parent verified.

DELIVERY COST ASSURANCE

Delivery of live animal lots not to exceed \$300 each.

FREE NATIONWIDE DELIVERY

Purchase any three live animal lots and we'll deliver them free of charge.

SIGHT UNSEEN PURCHASE SATISFACTION GUARANTEED

Coordinate with us or one of our authorized buyer representatives and we'll guarantee your satisfaction.



JOIN US FOR TWO GREAT EVENTS!

COLEMAN ANGUS MATERNAL SOURCE SALE • Charlo, MT and MONTANA RANCH MATERNAL REVIVAL SALE • Bigfork, MT

MONDAY, OCTOBER 10TH

All Day: Cattle available for inspection at both Coleman Angus and Montana Ranch

6:00 pm: Dinner with Coleman Angus Ranch at Ninepipes Lodge, Ronan, MT

TUESDAY, OCTOBER 11TH

Morning: Cattle available for inspection at Coleman Angus Ranch

Noon: Complimentary Lunch

1:00 pm: The Coleman Angus Maternal Source Sale – Charlo, MT

6:00 pm: CAB Prime Rib dinner at Montana Ranch, Bigfork, MT

WEDNESDAY, OCTOBER 12TH

Morning: Cattle available for inspection at Montana Ranch

Noon: Complimentary Lunch

1:00 pm: The Montana Ranch Maternal Revival Sale – Bigfork, MT



SALE
RING
Live

- Go to www.SaleRing.Live
- Click, "Login/Registration"
- First Time Users, Click "Registration"
- Enter Your Personal Information
- Check Box for "I Agree to the Terms Above"
- Click "Next Step"
- Confirmation Email will be Sent



The ANGUS COW

THE ANGUS COW – The Angus breed's position as the number one beef breed in the world was built on the back of the Angus cow. She was reliable, productive, predictable and built for the environment she inhabited. That Angus cow was fertile, functional and possessed a maternal instinct and intelligence that bordered on mythical. In the hills of California, the northern plains of Montana and the Dakotas, the arid Southwest, the corn belt of the Midwest and the hot, humid Southeast, that Angus cow went about her business of keeping countless ranches in the black.

That Angus cow began to change with the consolidation of the packing industry and the growth of grid-based marketing taking place over the last twenty-five years. During that time span, industry experts began proclaiming that we must add more marbling, more growth and basically more of everything. Genetic trend in the beef cattle business became driven by theory developed in the board rooms of packing houses and in the class rooms of universities. Breeding programs began taking their cues from sale reports, semen companies and marketeers intent on creating constant churn.

At first the changes were subtle. Today, it's painfully obvious that the pursuit of more carcass merit and growth came at the expense of the attributes that made the Angus cow the most efficient factory in the business. Ultimately, those paying the steepest price for this conversion are the ranchers whose livelihoods depend solely on efficiently raising cattle in our nation's harshest environments. These ranchers have seen their margins lessen and inputs increase with every calf crop. That Angus cow which was their most valuable asset twenty-five years ago has become one of their costliest liabilities today. That Angus cow has gotten too big for her environment, failing to breed on time; Her calf has more genetic potential for weaning growth than can be realized in most real-world ranch environments. That Angus cow is often poor footed, poor uddered and requires supervision at calving time. The maternal instinct and intelligence which was a trademark of that Angus cow has been replaced by an instinct to run for the feed truck when the going gets tough.



A *Maternal* REVIVAL

A MATERNAL REVIVAL - The good news is that the pendulum is beginning a swing back to the basics of profitable beef cattle production through increased emphasis on maternal traits. There is now a growing segment of breeders who recognize, and admit, the damage done to our nation's cow-calf producers with misdirected selection for extremes in terminal traits. Balance is key to finding the sweet spot in the balance of maternal and performance.

Maternal is often misunderstood. What does maternal mean to us at Montana Ranch? Maternal may be understated and must be observed to understand. Maternal is simple and quiet. Maternal describes intangible traits which are difficult to quantify. Maternal is optimum, not maximum. Maternal is the bond between cow and calf which enables the calf to grow and thrive. Maternal describes the synchrony with nature through a cow's function, structure and intellect. Maternal is the design for usefulness and practicality. Maternal means a cow is sized in harmony with her environment. Maternal is the efficiency of a cow converting grass into the most pounds of calf her environment will allow. Maternal is calving quietly and unassisted. Maternal is the cow putting her calf's welfare ahead of her own. Maternal is nuzzling the calf toward her udder for that first drink of milk. Maternal is the shade a cow provides her calf on a hot day. Maternal is the shelter a cow gives her calf on a cold, windy night. Maternal is instinct by protecting her calf from predators. Maternal is intelligence in knowing the difference between predator and handler. Maternal is searching the best grass for her calf and herself. Maternal is breeding back on time every year.

Maternal is productive and long-lasting.

Maternal is profitable and sustainable for those who embrace it.

Join us as we gather for a **MATERNAL REVIVAL**.

MONTANA Judgement 1038



GENEBROKERS

Unmatched for the combination of
WW, YW, DMI, MW, \$EN, HP, Claw and \$M



MILL BRAE FP JOANIE 3063
Pathfinder Dam of Judgement



MONTANA JOANIE 1037
Full sister to
Judgement



MONTANA JUDGEMENT 1038

BD: 2/14/2021

REG #: 20193391

TATTOO: 1038

S A V RAINFALL 6846
SQUARE B ATLANTIS 8060
19405249
ELBANNA OF CONANGA 1209

#CONNEALY FINAL PRODUCT
#MILL BRAE FP JOANIE 3063
17630369
#MILL BRAE FA JOANIE 9263

#COLEMAN CHARLO 0256
S A V BLACKCAP MAY 4136
#CONNEALY CONSENSUS
ELBASTA OF CONANGA 9703
CONNEALY PRODUCT 568
#EBONISTA OF CONANGA 471
#S A V FINAL ANSWER 0035
MILL BRAE JOANIE FERD 903



CED	BW	WW	YW	RADG	DMI	SC	\$M
3	3.1	72	122	0.28	0.39	1.54	91
DOC	CLAW	ANGLE	HP	MM	MB	RE	\$W
11	0.31	0.52	17.4	26	0.61	0.8	68
							261

- Stacking three of the breed's most prepotent herd sire producing dams into one pedigree while reducing mature size and improving type, performance and structural soundness, Judgement is the answer for simultaneous selection for optimum performance, efficiency and maternal superiority.
- Unique in his phenotype and genotype, Judgement has been tapped to join his maternal brother, Benchmark, and his sire, Atlantis, for heavy use in the Montana program. With added muscle expression, masculinity and flawless structure, this son of the Pathfinder Dam, Joanie 3063 - selling as Lot 1, is the only bull in the Angus database with his levels of WW (20%); YW (30%); DMI (15%); reduced MW (20%); \$EN (30%) and HP (3%), while also ranking in the top 2% for both Claw and \$Maternal.
- With exceptional breed character, a real herd sire presence and outstanding testicular development, Judgement is bold-ribbed, long-spined and superbly attractive in his design

SQUARE B *Atlantis* 8060



Top 1% HP and Top 2% \$M

GENEBROKERS



SQUARE B ATLANTIS 8060

BD: 8/24/2018

REG #: 19405249

TATTOO: 8060

#COLEMAN CHARLO 0256
S A V RAINFALL 6846
18578963
S A V BLACKCAP MAY 4136

#CONNEALY CONSENSUS
ELBANNA OF CONANGA 1209
17029025
ELBASTA OF CONANGA 9703

#O C C PAXTON 730P
BOHI ABIGALE 6014
#S A V 8180 TRAVELER 004
#S A V MAY 2397

#KMK ALLIANCE 6595 I87
BLINDA OF CONANGA 004
#CONNEALY FORWARD
#ELBA OF CONANGA 3761



CED	BW	WW	YW	RADG	DMI	SC	\$M
6	0.8	58	105	0.27	0.32	1.26	89
DOC	CLAW	ANGLE	HP	MM	MB	RE	\$W
23	0.33	0.52	18.5	24	0.66	0.88	56
							254

AMF NHF CAF OSF DDF MIF OHF RDF DZF

• Montana Ranch Featured Herd Sire

- With each calf crop, Atlantis has increased his popularity across a wide spectrum of breeders – from those looking to balance early, accelerated growth with moderated mature size to those looking to improve type, kind, muscle expression and structural soundness. His oldest progeny exhibit incredible base width, tremendous muscle, outstanding depth and rib shape with an unmatched look.
- Combining two of the most prepotent dams in the breed for maternal productivity and predictability, Atlantis' first calf crop earned ratios of BR 820@100; WR 613@100; YR 323@99; SC 117@102; IMF 197@99; RE 197-101, including three of the four top-sellers at Chestnut Angus in MN with a son ranking as the top-seller at \$50,000, and Barbaramere 1179, a \$50,000 half interest selection of Bucksnot Angus in the Spring 2022 Ingram Angus sale.

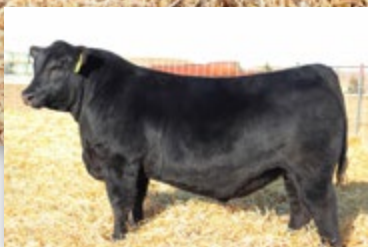
CHESTNUT HAUS 231
\$50,000 son of Atlantis



INGRAM BAR-BARAMERE 1179
\$50,000 half interest daughter of Atlantis

MILL BRAE Benchmark 9016

ORigen Top 1% \$W and Top 3% WW and YW



SAV BENCH PRESS 1363 • \$45,000 son of Benchmark



MONTANA JENNINGS 1001 • Son of Benchmark



MILL BRAE BENCHMARK 9016

BD: 2/5/2019

REG #: 19503604

TATTOO: 9016

#CONNEALY CONFIDENCE 0100
#CONNEALY CONFIDENCE PLUS
17585576
ELBANNA OF CONANGA 1209

#CONNEALY FINAL PRODUCT
#MILL BRAE FP JOANIE 3063
17630369
#MILL BRAE FA JOANIE 9263

CONNEALY TOBIN
BECKA GALA OF CONANGA 8281

#CONNEALY CONSENSUS
ELBASTA OF CONANGA 9703

CONNEALY PRODUCT 568
#EBONISTA OF CONANGA 471

#S A V FINAL ANSWER 0035
MILL BRAE JOANIE FERD 903

CED	BW	WW	YW	RADG	DMI	SC	SM
8	1.4	85	152	0.3	1.67	1.08	80
DOC	CLAW	ANGLE	HP	MM	MB	RE	SC
19	0.39	0.46	14.7	33	0.65	0.87	276

AMF NHF CAF OSF DDF MIF OHF RDF D2F



• Montana Ranch Featured Herd Sire

- Produced by the powerful and productive Pathfinder Dam selling as Lot 1 in this event, Benchmark is a blending of maternal productivity and exceptional performance. Long-spined, athletic and superbly sound, Benchmark continues to generate widespread customer satisfaction and strong semen sales around the globe.
- Earning progeny ratios of BR 175@100; WR 65@101; YR 22@103; IMF 22@100; RE 22@103, Benchmark ranks in the top 35% or better in the breed for 20 EPDs/Indexes, including a spot in the top 1% for \$W and the top 3% for both YW and \$W. The first progeny from Benchmark include sons selling for an average of \$22,000 in the 2022 SAV sale with Bench Press 1363 going to Genex and Hilltop Angus Ranch for \$45,000, and Montana Jennings 1001, who joins his sire in the Montana Ranch herd sire battery.

MILL BRAE FP Joanie 3063

The Pathfinder Dam of Benchmark and Judgement



MILL BRAE FP JOANIE 3063

BD: 1/21/2013

REG #: 17630369

TATTOO: 3063

CONNEALY PRODUCT 568
#CONNEALY FINAL PRODUCT
15848422
#EBONISTA OF CONANGA 471

#S A V FINAL ANSWER 0035
#MILL BRAE FA JOANIE 9263
16429762
MILL BRAE JOANIE FERD 903

#G A R RETAIL PRODUCT
PRIDE FINE OF CONANGA 566
#CONNEALY DEEP CANYON 454
EBONISA OF CONANGA 5469

#SITZ TRAVELER 8180
S A V EMULOUS 8145
#R R FERDINAND 758D
#M B JOANIE 8E8 1627



SM
57
SW
69

CED	BW	WW	YW	DOC	CLAW	ANGLE	HP	MM	MB	RE
5	1.9	72	129	6	0.45	0.55	12	29	0.27	0.51

- A true cornerstone in the Montana program and known as the Pathfinder Dam of herd sires, Joanie 3063 walks with the best of the breed and is extremely productive, fertile and prolific. Gorgeously feminine, deep-sided and broody with good feet and sound udder, Lot 1 exemplifies the classic Angus maternal look and is ideal in her type.
- With progeny production of BR 6@103; WR 6@104; YR 6@107; IMF 13@96; RE 13@106, Lot 1's progeny include the Montana Ranch sires Benchmark, Judgement 1038 and Jake 1036; Mill Brae Cornerstone, the top-selling bull of the 2018 Mill Brae sale now working in the Willow Creek Angus program in KS; Mill Brae Conf Plus 9032 at Thomson Land & Livestock in ID; C Forever West at ELK Angus in WY; and Rafter 5M Scout 109 at Rafter 5M in OK.
- Produced 77 quality embryos on 9 collections for an average of 8.6.
- Sells with a bull calf at side (Lot 1A) born 7/15/22 sired by Brooking Revival 0074. Tattoo: 2329; BW 70 lbs; AAA 20412916.

MONTANA *Joanie* 1037

Top 1% \$M



MONTANA JUDGEMENT 1038 • The full brother to Joanie 1037



MONTANA JOANIE 1037

BD: 2/13/2021

REG #: 20193390

TATTOO: 1037

S A V RAINFALL 6846
SQUARE B ATLANTIS 8060
19405249
ELBANNA OF CONANGA 1209

#CONNEALY FINAL PRODUCT
#MILL BRAE FP JOANIE 3063
17630369
#MILL BRAE FA JOANIE 9263

#COLEMAN CHARLO 0256
S A V BLACKCAP MAY 4136
#CONNEALY CONSENSUS
ELBASTA OF CONANGA 9703
CONNEALY PRODUCT 568
#EBONISTA OF CONANGA 471
#S A V FINAL ANSWER 0035
MILL BRAE JOANIE FERD 903



\$M
92
\$W
76

CED	BW	WW	YW	DOC	CLAW	ANGLE	HP	MM	MB	RE
8	0.8	71	121	18	0.3	0.48	15.4	28	0.61	0.83

- Selling one-half interest with the option to double bid price for full ownership.
- Bold in her design with unmatched rib-shape, outstanding muscle expression and stunning femininity, Joanie 1037 is exactly what one would expect from the mating of Atlantis to the gorgeous Pathfinder Dam, Joanie 3063. Full siblings include the duo of brothers, Judgement 1038 and Jake 1037, while a full sister in blood is Joanie 1041, Lot 3 in this event.
- Recording an impressive RE ratio of 116, Lot 2 is a donor in waiting with rankings in the top 1% of the breed for \$M, the top 2% for Claw, the top 10% \$W and the 30% for \$EN.

MONTANA *Joanie* 1041

Classically Feminine



SQUARE B TRUE NORTH • Sire of Joanie 1041



MONTANA JOANIE 1041

BD: 2/13/2021

REG #: 20193394

TATT00: 1041

S A V RAINFALL 6846
SQUARE B TRUE NORTH 8052
19405246
ELBANNA OF CONANGA 1209

#CONNEALY FINAL PRODUCT
#MILL BRAE FP JOANIE 3063
17630369
#MILL BRAE FA JOANIE 9263

#COLEMAN CHARLO 0256
S A V BLACKCAP MAY 4136
#CONNEALY CONSENSUS
ELBASTA OF CONANGA 9703

CONNEALY PRODUCT 568
#EBONISTA OF CONANGA 471
#S A V FINAL ANSWER 0035
MILL BRAE JOANIE FERD 903



\$M
75
\$W
76

CED	BW	WW	YW	DOC	CLAW	ANGLE	HP	MM	MB	RE
13	-0.1	74	132	14	0.47	0.52	12.3	28	0.42	0.79

• This full sister in blood to Lot 2 and Judgement 1038 is classically feminine and attractively patterned with tremendous depth of body and front third extension. Her sire, True North, is one of the industry's elite calving ease sires, while her dam is the powerful Pathfinder Dam, Joanie 3063. A full brother, C Forever West, was the featured \$13,000 selection of ELK Angus of WY from the 2022 Colyer Angus and Hereford Bull Sale.

• With balanced rankings in the top 5% of the breed for CED, the top 10% for \$W and the top 15% for WW, YW and \$M, Joanie 1041 posted an individual RE ratio of 104.

• Due to calve 2/19/23 with a heifer pregnancy sired by Montana Justice 1109 (Reference Sire J).

SAV Blackcap May 8552

Maternal Power



SAV BLACKCAP MAY 1416

The full sister to Resource and Dam of Lot 4



SAV SCALE HOUSE 0845

The \$275,000 maternal brother to Lot 4



SA V BLACKCAP MAY 8552

BD: 2/3/2018

REG #: 19204816

TATT00: 8552

#O C C PAXTON 730P
#COLEMAN CHARLO 0256
16879074
BOHI ABIGALE 6014

RITO 707 OF IDEAL 3407 7075
SA V BLACKCAP MAY 1416
16973624
SA V BLACKCAP MAY 4136

O C C FOCUS 813F
O C C BLACKBIRD 736K
#SITZ TRAVELER 8180
SA V ABIGALE 6062

#R R RITO 707
IDEAL 3407 OF 1418 076
#SA V 8180 TRAVELER 004
#SA V MAY 2397



SM
62
SW
57

CED	BW	WW	YW	DOC	CLAW	ANGLE	HP	MM	MB	RE
2	1.5	63	113	14	0.49	0.53	12.4	21	0.04	0.78

- Selling one-half interest with the option to double bid price for full ownership.

- Unquestionably one of the most valued females in the Montana Ranch program. Packed with power and loaded up with depth and fleshing ability, Blackcap May 8552 possesses a picture-perfect udder and carries unparalleled femininity and striking breed character.

- Produced by Blackcap May 1416, the flush sister to Resource, Lot 4 is a maternal sister to SAV Scale House 0845, the \$275,000 top-seller of the 2021 SAV sale, and the \$100,000 SAV Expertise 7028.

- Recording a progeny record of BR 2@97; WR 2@102; YR 1@100; IMF 7@106 and RE 7@104, Lot 4 is the dam of Montana Jumbo 1099, the powerful young herd sire in the program, and Hitchcock 0007, a highlight of the 2021 Montana sale going to Nash Land and Livestock of MT.

- Produced 40 quality embryos on 6 collections for an average of 6.7.

- Sells with a heifer calf at side (lot 4A) born 7/14/22 sired by SAV Renown 3439. Tattoo: 2341; BW: 84; AAA 20412928.

MONTANA *Blackcap May* 1097

Top 1% WW and YW



MONTANA HITCHCOCK 0007
Maternal brother to Lot 5



MONTANA JUMBO 1099
Son of Lot 4 and full brother to Lot 5



MONTANA BLACKCAP MAY 1097

BD: 2/6/2021

REG #: 20132894

TATTOO: 1097

#CONNEALY CONFIDENCE PLUS
MILL BRAE BENCHMARK 9016
19503604
#MILL BRAE FP JOANIE 3063

#COLEMAN CHARLO 0256
S A V BLACKCAP MAY 8552
19204816
S A V BLACKCAP MAY 1416

#CONNEALY CONFIDENCE 0100
ELBANNA OF CONANGA 1209

#CONNEALY FINAL PRODUCT
#MILL BRAE FA JOANIE 9263

#O C C PAXTON 730P
BOHI ABIGALE 6014
RITO 707 OF IDEAL 3407 7075
S A V BLACKCAP MAY 4136



SM
62
SW
80

CED	BW	WW	YW	DOC	CLAW	ANGLE	HP	MM	MB	RE
3	4.1	97	167	17	0.5	0.54	12.8	26	0.19	0.87

- Pure performance from this Benchmark daughter stemming from a pedigree stacked with the breed's great dams. Exceptionally deep-sided, wedge-shaped and feminine, Lot 5 was produced from a dam who blends Charlo with a flush sister to Resource.
- Produced from the same flush as Montana Jumbo 1099, a herd sire in the program, this donor in waiting posted a 205-day weight of 800 lbs and earns a place in the breeds top 1% for both WW and YW.
- Due to calve 2/20/23 with a heifer pregnancy sired by Brooking Can Am 0012 (Reference Sire E).

Donna 505

- Dam of Lots 6A-6C.
- Donna 505 is a cornerstone of the program blending two of the breed's most prepotent and proven dams. Powerfully built, yet feminine and extended through her front third with a picture perfect udder, Donna 505 is regarded as one of Resource's top daughters with progeny such as Fred 8207, the top-selling bull of the 2019 sale selected by Koupal Angus of SD; Donna 0204, the 3rd high-selling bred heifer of the 2021 sale going to Faith Farms of TN; Foreman 8076, the 2nd high-selling bull of the 2019 sale going to Little Goose Ranch of WY; Donna 8075, the 2nd high-selling bred heifer of the 2019 sale selected by Beartooth Angus of MT; Donna 9015, the top-selling bred heifer of the 2020 sale to B&B Angus in SD; Donna 7001, a featured donor at Thomson Land and Livestock in ID; and Donna 9218, a highlight of the 2020 sale to Monadnock Angus in SC.



DONNA 505 EMBRYOS

SQUARE B ATLANTIS 8060
MONTANA JUDGEMENT 1038
 20193391
 #MILL BRAE FP JOANIE 3063

#S A V RESOURCE 1441
COLEMAN DONNA 505
 18238091
 COLEMAN DONNA 714

S A V RAINFALL 6846
 ELBANNA OF CONANGA 1209
 #CONNEALY FINAL PRODUCT
 ELBASTA OF CONANGA 9703
 RITO 707 OF IDEAL 3407 7075
 S A V BLACKCAP MAY 4136
 #CONNEALY ONWARD
 COLEMAN DONNA 386



- 3 SEXED FEMALE IVF EMBRYOS (US ONLY) – GUARANTEE OF 1 PREGNANCY



MONTANA FOREMAN 8076
 Son of Donna 505



MONTANA FRED 8207
 Son of Donna 505

MONTANA Donna 1220

Top 1% HP and Top 10% \$M



MONTANA DONNA 0204
Maternal sister to Lots 6A-6C



MONTANA DONNA 8074
Maternal sister to Lots 6A-6C



MONTANA DONNA 1220

BO: 7/2/2021

REG #: 20133439

TATTOO: 1220

S A V RAINFALL 6846
SQUARE B ATLANTIS 8060
19405249
ELBANNA OF CONANGA 1209

#S A V RESOURCE 1441
COLEMAN DONNA 505
18238091
COLEMAN DONNA 714

#COLEMAN CHARLO 0256
S A V BLACKCAP MAY 4136

#CONNEALY CONSENSUS
ELBASTA OF CONANGA 9703

RITO 707 OF IDEAL 3407 7075
S A V BLACKCAP MAY 4136

#CONNEALY ONWARD
COLEMAN DONNA 386



\$M
81
\$W
60

CED	BW	WW	YW	DOC	CLAW	ANGLE	HP	MM	MB	RE
9	0.5	61	103	19	0.34	0.59	18.5	23	0.19	0.82

- This daughter of Atlantis from the foundation Donna 505 is among the most valuable females ever offered from the program.
- Deep, soft-sided and impeccable in her design, Donna 1220 has the intangibles of a top-tier future donor. Recording impressive scan ratios of 133 IMF and 112 RE, Lot 6B earns a place in the top 1% of the breed for HP; the top 4% for Claw and the top 10% for \$M.



MONTANA *Donna* 1217

Beautifully Feminine



MONTANA DONNA 8075
Maternal sister to Lots 6A-6C



MONTANA DONNA 9218
Maternal sister to Lots 6A-6C



MONTANA DONNA 1217

BO: 5/22/2021

REG #: 20141440

TATTOO: 1217

#S A V 8180 TRAVELER 004
#S A V 004 DENSITY 4336
14725035
S A V MAY 7238

#S A V RESOURCE 1441
COLEMAN DONNA 505
18238091
COLEMAN DONNA 714

#SITZ TRAVELER 8180
BOYD FOREVER LADY 8003
#LEACHMAN RIGHT TIME
#S A R PROSPECTOR MAY 9124
RITO 707 OF IDEAL 3407 7075
S A V BLACKCAP MAY 4136
#CONNEALY ONWARD
COLEMAN DONNA 386



\$M
65
\$W
38

CED	BW	WW	YW	DOC	CLAW	ANGLE	HP	MM	MB	RE
9	1.2	42	76	13	0.32	0.37	13	21	-0.16	0.8

- Produced from a mating designed for desired maternal type, function and efficiency, this daughter of the foundation Donna 505 is sired by the famed Pathfinder Sire noted for his impeccable daughters, Density.
- Longer-spined, yet deep-sided and attractively patterned with exquisite femininity, Donna 1217 earned a 108 RE ratio. She ranks in the top 2% of the breed for Claw, the top 3% for DMI and the top 25% HP and \$M.

Donna 7233

- Dam of Lots 7A-7B.
- Blending two of the breed's most prepotent and proven dams, Donna 7233 is wedge-shaped and exquisitely maternal with ideal udder structure.
- One of the most popular young donors in the program, Donna 7233 balances progeny ratios of BR 2@98; WR 2@100; YR 2@100 and IMF 9@103, and now ranks in the breed's top 2% for DOC and Claw; the top 4% for HP; the top 10% for \$M; the top 20% for WW; and the top 25% for YW.
- Sons from Donna 7233 will be highlights of the upcoming bull sale and include Justice 1109; Jingo 1085, Jetway 1087 and Jetstream 1088.



DONNA 7233 EMBRYOS

#MOHNEN SUBSTANTIAL 272
SITZ STELLAR 726D
18397542
SITZ PRIDE 200B

S A V RESOURCE 1441
COLEMAN DONNA 7233
19110861
COLEMAN DONNA 714

#BENFIELD SUBSTANCE 8506
MOHNEN GLYN MAWR ELBA 1758
#CONNEALY FINAL PRODUCT
#SITZ PRIDE 308Y
RITO 707 OF IDEAL 3407 7075
S A V BLACKCAP MAY 4136
#CONNEALY ONWARD
COLEMAN DONNA 386



- 3 CONVENTIONAL IVF EMBRYOS (CN EXPORTABLE) – GUARANTEE OF 1 PREGNANCY



MONTANA JUSTICE 1109
Son of Donna 7233



MONTANA JETSTREAM 1088
Son of Donna 7233

MONTANA Donna 1084

Top 3% \$M and Claw



MONTANA JINGO 1085
Full brother to Lot 7B



MONTANA JETWAY 1087
Maternal brother to Lots 7A-7B



MONTANA DONNA 1084

BD: 2/28/2021

REG #: 20193429

TATT00: 1084

#COLEMAN CHARLO 0256
S A V RAINFALL 6846
18578963
S A V BLACKCAP MAY 4136

#S A V RESOURCE 1441
COLEMAN DONNA 7233
19110861
COLEMAN DONNA 714

#O C C PAXTON 730P
BOHI ABIGALE 6014
#S A V 8180 TRAVELER 004
#S A V MAY 2397

RITO 707 OF IDEAL 3407 7075
S A V BLACKCAP MAY 4136
#CONNEALY ONWARD
COLEMAN DONNA 386



\$M
87
\$W
66

CED	BW	WW	YW	DOC	CLAW	ANGLE	HP	MM	MB	RE
7	0.7	56	103	19	0.33	0.38	15	33	0.12	0.41

- The first daughter of Donna 7233 to sell! Long-spined and gorgeously feminine, Donna 1084 exudes maternal attractiveness and has been a favorite of visitors. Double-bred to the famed Blackcap May 4136 and descending from Donna 714, this donor in waiting recorded a 109 IMF ratio and ranks in the top 3% of the breed for \$M and Claw; the top 15% for HP and the top 20% for both \$W and \$EN.

- Due to calve 2/19/23 with a heifer pregnancy sired by Mill Brae Benchmark 9016 (Reference Sire C).

BROOKING *Revival* 0074



Unparalleled Type



BROOKING REVIVAL 0074

BD: 1/16/2020

REG #: 20057293

TATTOO: 74H

#S A V RENOWN 3439
S A V RENOVATION 6822
18579309 S A V MADAME PRIDE 0151

#SOO LINE MOTIVE 9016
SOO LINE ROSE 1019
191059893 E A ROSE 918

RITO 707 OF IDEAL 3407 7075
S A V BLACKCAP MAY 4136

#S A V 004 DENSITY 4336
S A V MADAME PRIDE 0075

HF KODIAK 5R
TLA BEAUTY 5R

#S A V FINAL ANSWER 0035
E A ROSE 738



CED	BW	WW	YW	RADG	DMI	SC
I 5	I 0.7	I 57	I 102	I 0.24	I 0.71	I 0.81
DOC	CLAW	ANGLE	HP	MM	MB	RE
I 13	I 0.39	I 0.45	I 11.2	I 23	I 0.55	I 0.51

\$M
66
\$W
55
SC
220

AMF NHF CAF OSF DDF MIF OHF RDF D2F

• Montana Ranch Featured Herd Sire

- The Lot 1 bull of the 2021 Brooding Angus Ranch sale in SK, Revival blends Renovation with the famous Rose 1019 into a desirable phenotypic package backed by proven maternal quality. From a pedigree that runs rich in many of the breed's preeminent dams for productivity, Revival is deep-sided and smooth-made with abundant muscle and fantastic breed character.
- Used in some of the nation's most respected maternally-oriented herds, the first calf crop from Revival, while young in age, shows great promise for improved structural soundness, added muscle, depth of rib and stunning good looks.

*Donna*4356 SOURCE OF PROVEN AND PREDICTABLE PRODUCTION



MONTANA DONNA 8085 • Daughter of Donna 4356



MONTANA DONNA 8087 • Daughter of Donna 4356



MONTANA DONNA 8090 • Daughter of Donna 4356



MONTANA GLOBAL 9129 • Son of Donna 4356



MONTANA HOMEWARD 0075 • Son of Donna 4356



MONTANA FOUNDATION 8067 • Son of Donna 4356





Donna 4356

The full sister to Bravo 6313

- Dam of Lots 8A-8B.
- Donna 4356 is an easy-fleshing, exquisitely feminine and docile full sister to the \$450,000 record-selling sire, Bravo 6313, and the mainstay Montana Ranch herd sire, Patriot 6310. Her progeny earn ratios of 3 BW 85; 3 WW 101; 3 YW 99; 19 IMF 106; and 19 RE 99, including the widely used Global 9129, a featured herd sire in the 2020 sale selected by Monadnock Farms, SC; Goddard Farms, NC; and Strommen Ranch, ND; the \$14,000 Foundation 8067 at Little Goose Ranch; Homeward 0075, a featured herd sire at Leadore Angus Ranch; Donna 8090, the \$20,500 half-interest top-selling bred heifer of the 2019 sale; Donna 8086, chosen by Monadnock Farms, SC from the 2019 sale; Donna 0078 at Bonner Farms and numerous daughters now working alongside 4356 in the Montana Ranch embryo program.



DONNA 4356 EMBRYOS

S A V RENOVATION 6822
BROOKING REVIVAL 0074

20057293

SOO LINE ROSE 1019

#COLEMAN CHARLO 0256

COLEMAN DONNA 4356

18107536

COLEMAN DONNA 714

#S A V RENOWN 3439
#S A V MADAME PRIDE 0151

#SOO LINE MOTIVE 9016
E A ROSE 918

#O C C PAXTON 730P
BOHI ABIGALE 6014

#CONNEALY ONWARD
COLEMAN DONNA 386



DONNA 4356 EMBRYOS

S A V RAINFALL 6846
SQUARE B ATLANTIS 8060

19405249

ELBANNA OF CONANGA 1209

#COLEMAN CHARLO 0256

COLEMAN DONNA 4356

18107536

COLEMAN DONNA 714

#COLEMAN CHARLO 0256
S A V BLACKCAP MAY 4136

#CONNEALY CONSENSUS
ELBASTA OF CONANGA 9703

#O C C PAXTON 730P
BOHI ABIGALE 6014

#CONNEALY ONWARD
COLEMAN DONNA 386



• 3 SEXED FEMALE IVF EMBRYOS (US ONLY) - GUARANTEE OF 1 PREGNANCY

• 3 SEXED FEMALE IVF EMBRYOS (US ONLY) - GUARANTEE OF 1 PREGNANCY

Angus friends,

It is with genuine excitement that I welcome you to the Maternal Revival Female Sale, at Montana Ranch. I've had the privilege of working alongside David Brown in the selection and discussions surrounding the offering for this year's event, and I can promise you, that this is the deepest and highest quality offering that Montana Ranch has ever presented to the buying public. From the very beginning of the catalog, you'll see that some very unique investment opportunities have been presented to you. When compared to a fast-paced society that tends to move swiftly in order to keep up with trends and fads, I hope you'll notice that this genetic program has been built differently. That being said, as you continue to study the remainder of the sale offering, the genetics being offered are deeply anchored by cattle that have to pass the test on the ranch, and generate offspring and profitability for the purebred and commercial cattlemen alike. At this point, you have had the opportunity to study two incredible donor females that headline this tremendous offering. It's rare to see a ranch go through the painstaking process of breeding, proving, and investing in females at this level, and then turn around and make these genetics available to the buying public. Folks, it is **HARD, EXPENSIVE**, and requires incredible **PATIENCE** to maintain such a steadfast approach in building these types of females. In addition to the incredible donor cows being offered in the sale, there is a set of young females and frozen genetics that represent the future of this great program, along with the vision that David Brown and Dave Sabey share. I'm confident that some of these genetics will go on to anchor embryo transfer programs for breeders throughout the country.

Finally, I strongly encourage you to make plans to come visit their beautiful ranch and partake in the sale, it's an experience that you won't regret. For those of you that cannot attend in person, the convenience of online bidding will be provided via www.salering.live. Furthermore, I have spent a considerable amount of time studying the offering and would love to visit with you, should you have any questions or need any assistance.

Best wishes,

Dave Mulling

HOW TO BID ONLINE...IT'S EASY AS A, B, C!

Step A

Type salering.live into your browser. [Salering.live](http://salering.live) can be used on your phone, tablet or desktop. We strongly recommend using Google Chrome as your browser for the best viewing and bidding experience.

Step B

Click the "Login/Registration" button. First time users, click "Registration." Enter your personal information. Check box for "I Agree to the Terms Above." Click "Next Step." A confirmation email will be sent to the email address used in registration. [Salering.live](http://salering.live) reserves the right to refuse bidding credentials to any customer not meeting our specifications.

Step C

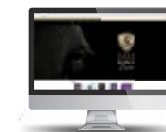
You are ready to go! You don't have to worry about a bidder number. As long as you are registered and logged in, you will be able to bid. Please remember you are on a highly sensitive web page. Please pay attention while scrolling or handling mobile/tablet devices.

Helpful Reminders!

PLEASE MAKE SURE YOU HAVE GOOD SERVICE! You should have, at bare minimum, two to three bars of service on your cellular devices. If you are using wifi, you need to have an upload speed of 5 mbps or more. Use www.speedtest.net to test your Internet.

Refresh your screen at sale time. Do not let your computer sit idle for over an hour and then return and try to bid. The website may have logged you out.

[Salering.live](http://salering.live) does not handle money. All lots purchased will need to be paid to the farm directly or to sale management.



WWW.SALERING.LIVE



Donna 206

Rito 707 x Donna 714 = Timelessly Maternal

- Dam of Lots 9-10.
- Donna 206 combines Rito 707 – the breed's common denominator in all modern performance genetics, with Donna 714 – arguably the most influential name in maternal genetics. Deep-sided and amply shaped with a great udder, superb feet and ideal breed character, Donna 206 carries a progeny record of BR 6@94; WR 6@103; YR 5@101 and is currently raising a natural calf at ten years of age.
- A tour of the young females in production at Montana Ranch leaves little doubt of the impact Donna 206 is making. In addition to the numerous productive daughters in the herd, her progeny includes Gibson 9111, serving as a herd sire in the Mystic Hill Farm program in VA; Donna 0316 at Ingram Angus in TN; Donna 9102 at Brown Angus Ranch in ND; and Donna 9038, at Crooked Creek Cattle Co. in GA.

MONTANA Donna 1207

Top 1% Claw and Top 3% \$M



MONTANA DONNA 0316
Maternal sister to Donna 1207



MONTANA DONNA 9038
Maternal sister to Donna 1207



MONTANA DONNA 1207

BD: 6/22/2021

REG #: 20133433

TATTOO: 1207

S A V RAINFALL 6846
SQUARE B ATLANTIS 8060
19405249
ELBANNA OF CONANGA 1209

#R R RITO 707
COLEMAN DONNA 206
17255857
COLEMAN DONNA 714

#COLEMAN CHARLO 0256
S A V BLACKCAP MAY 4136
#CONNEALY CONSENSUS
ELBASTA OF CONANGA 9703
RITO N BAR
ERISKAY OF ROLLIN ROCK 3
#CONNEALY ONWARD
COLEMAN DONNA 386



\$M
84
\$W
59

CED	BW	WW	YW	DOC	CLAW	ANGLE	HP	MM	MB	RE
7	1.3	57	106	18	0.29	0.38	15.3	27	0.36	0.53

- Consistently on the short list of visitor favorites, Donna 1207 is ideal in her type and kind with tremendous depth of body, unmatched structural soundness and an extended and feminine front one-third.
- Recording an IMF ratio of 112, Lot 9 puts together an EPD profile in the top 1% of the breed for Claw; the top 3% for \$M; the top 20% for \$EN and the top 25% for DMI.



MONTANA DONNA 9145

BD: 4/4/2019

REG #: 19603270

TATTOO: 9145

#WERNER WAR PARTY 2417
WERNER WAR PARTY 1472
17236833
GCC DIXIE ERICA 712S

#CONNEALY ONWARD
BAAR USA LADY JAYE 489
#O C C MISSING LINK 830M
O C C DIXIE ERICA 620N



#R R RITO 707
COLEMAN DONNA 206
17255857
COLEMAN DONNA 714

RITO N BAR
ERISKAY OF ROLLIN ROCK 3
#CONNEALY ONWARD
COLEMAN DONNA 386

\$M
69
\$W
63

CED	BW	WW	YW	DOC	CLAW	ANGLE	HP	MM	MB	RE
8	-0.2	63	114	17	0.5	0.43	11.1	22	-0.44	0.73

- Long-spined, deep-sided and heavy-muscled, Donna 9145, is a full sister to Gibson 9111, a highlighted herd sire of the 2021 sale going to Mystic Hill Farm in VA, and to Donna 9038, at Crooked Creek Cattle in GA.
- Montana Donna 1355, her daughter, recorded a WR of 100 and was a selection of Dutch Flat Angus in WA.
- Due to calve 2/22/23 with a heifer pregnancy sired by Brooking Revival 0074 (Reference Sire D).



MONTANA GIBSON 9111 • Full brother to Lot 10



MONTANA DONNA 9145 • Lot 10



MONTANA DONNA 1243 • Lot 11



MONTANA DONNA 1243

BD: 7/8/2021

REG #: 20133454

TATTOO: 1243

LT ENTERPRISE 5213
KOUPALS B&B PATHFINDER 8106
19274968
#B&B BLKBD PROGRESS 3015

#CONNEALY CAPITALIST 028
LT ERICA 0121
#KOUPALS B&B IDENTITY
#B&B BLKBD PROGRESS 0049



LD FREEDOM 5013
MONTANA DONNA 9327
19509315
COLEMAN DONNA 206

#KOUPAL ADVANCE 28
LD CAROL 9508
#R R RITO 707
COLEMAN DONNA 714

\$M
74
\$W
68

CED	BW	WW	YW	DOC	CLAW	ANGLE	HP	MM	MB	RE
12	-0.5	71	121	11	0.51	0.39	12.2	20	0.52	0.68

- Selected for this event to showcase the quality of her sire, Pathfinder, this fantastic female walks with the best maternal genetics in the business. Produced by a deep-sided and outstanding uddered young Freedom daughter, Donna 1243 recorded a 106 WR and a 105 YR, earning a place in the top 10% for CED; the top 15% BW; the top 20% \$M, WW and \$W; and the top 25% for both YW and moderated MW.

BROOKING *Can Am*0012



True Low BW and Power

GENEBROKERS



BROOKING CAN AM 0012

BO: 1/2/2020

REG #: 20057295

TATTOO: 12H

#S A V RENOWN 3439
S A V RENOVATION 6822
18579309 S A V MADAME PRIDE 0151

#CONNEALY EARNAN 076E
BROOKING ROSE 6067
1946462 SOO LINE ROSE 1019

RITO 707 OF IDEAL 3407 7075
S A V BLACKCAP MAY 4136

#S A V 004 DENSITY 4336
S A V MADAME PRIDE 0075

#CONNEALY CONSENSUS
BRAZILA OF CONANGA 3991 839A

#SOO LINE MOTIVE 9016
E A ROSE 918



• Montana Ranch Featured Herd Sire

- Sired by the popular Renovation and from a productive daughter of the famed Rose 1019, Can Am was the \$60,000 top-seller of the 2021 Brooking Angus Ranch sale in SK.
- Expressively muscled with incredible body length and unmatched presence and attractiveness, Can Am recorded a WR of 115 and is from a dam whose progeny earn WR 4@114.
- Proven safe for use on heifers, Can Am ranks in the top 35% of the breed for CED and \$M, while also placing in the top 20% for WW, the top 25% for YW and the top 30% for HP, \$EN and Claw.

CED	BW	WW	YW	RADG	DMI	SC	SM
3	0.6	71	123	0.23	1.44	1.49	66
DOC	CLAW	ANGLE	HP	MM	MB	RE	\$W
8	0.45	0.4	13.2	14	0.34	0.43	59
							SC
							200

AMF NHF CAF OSF DDF MIF OHF RDF D2F



Donna 8111

- Dam of Lots 12A-12C.
- From the golden cross of the breed's two elite proven and prepotent dams – 714 and 4136, Donna 8111 is on the fast track to becoming a great producer in her own right. Herdsman 0002, 8111's first calf, was the popular 4th high-selling bull of the 2021 sale going to Leadore Angus Ranch and is included in her progeny record BR 2@100; WR 2@107 and YR 2@103.
- Ranking in the breed's top 1% for Claw, Donna 8111 also earns a spot in the top 10% for DOC, WW, YW and HP.



DONNA 8111 EMBRYOS

SITZ STELLAR 726D
SITZ BARRICADE
 19078148
 SITZ BARBARAMERE NELL 73T

S A V SENSATION 5615
COLEMAN DONNA 8111
 19243290
 COLEMAN DONNA 714

#MOHNEN SUBSTANTIAL 272
 SITZ PRIDE 200B

SITZ SUPERIOR 10971
 SITZ BARBARAMERE NELL 73T

#S A V REGISTRY 2831
 S A V BLACKCAP MAY 4136

#CONNEALY ONWARD
 COLEMAN DONNA 386

- 3 CONVENTIONAL IVF EMBRYOS (US ONLY) – GUARANTEE OF 1 PREGNANCY



MONTANA HERDSMAN 0002 • \$13,000 son of Donna 8111

MONTANA Donna 1090

Top 1% \$M and HP



MONTANA DONNA 1090

BD: 3/3/2021

REG #: 20193434

TATTOO: 1090

S A V RAINFALL 6846
SQUARE B ATLANTIS 8060
19405249
ELBANNA OF CONANGA 1209

S A V SENSATION 5615
COLEMAN DONNA 8111
19243290
COLEMAN DONNA 714

#COLEMAN CHARLO 0256
S A V BLACKCAP MAY 4136
#CONNEALY CONSENSUS
ELBASTA OF CONANGA 9703

#S A V REGISTRY 2831
S A V BLACKCAP MAY 4136
#CONNEALY ONWARD
COLEMAN DONNA 386



\$M
97
\$W
69

CED	BW	WW	YW	DOC	CLAW	ANGLE	HP	MM	MB	RE
5	2	71	118	28	0.31	0.47	20.9	26	-0.05	0.7

- Selling Choice of Lot 12B or 12C

- A full-bodied and exquisitely feminine Atlantis daughter from the productive Donna 8111, Lot 12B runs with the best of them for the combination of type and pedigree. Earning a RE ratio of 103, Donna 1090 ranks in the top 1% of the breed for \$M and HP, while also placing in the top 2% for Claw, the top 10% for DOC, the top 15% for \$W and the top 20% for WW.

- Due to calve 2/15/23 with a heifer pregnancy sired by Brooking Can Am 0012 (Reference Sire E).

MONTANA Donna 1092

Top 3% \$M and 5% HP



MONTANA DONNA 1092

BD: 3/6/2021

REG #: 20193436

TATTOO: 1092

S A V RAINFALL 6846
SQUARE B ATLANTIS 8060

19405249

ELBANNA OF CONANGA 1209

#COLEMAN CHARLO 0256
S A V BLACKCAP MAY 4136

#CONNEALY CONSENSUS
ELBASTA OF CONANGA 9703

#S A V REGISTRY 2831
S A V BLACKCAP MAY 4136

#CONNEALY ONWARD
COLEMAN DONNA 386

S A V SENSATION 5615
COLEMAN DONNA 8111

19243290

COLEMAN DONNA 714



\$M
89
\$W
72

CED	BW	WW	YW	DOC	CLAW	ANGLE	HP	MM	MB	RE
4	1.2	71	119	25	0.31	0.53	17.5	26	0.24	0.75

- Selling Choice of Lot 12B or 12C
- Deep-ribbed and full of power blended with a real brood cow look, Donna 1092 has a sterling maternal pedigree and strong genetic predictions for profitable production. Achieving a RE ratio of 106, Donna 1092 posts a top 2% Claw; top 3% \$M; top 5% HP, top 10% \$W and top 20% WW and DOC.
- Due to calve 2/19/23 with a bull pregnancy sired by Brooking Can Am 0012 (Reference Sire E).

MONTANA Donna 3202

Top 1% \$M and HP

- Dam of Lots 13A-D.
- With a rich maternal pedigree, Donna 3202 is a deep-sided, wedge-shaped and ultra-feminine powerhouse with picture-perfect udder and hooves.
- Progeny from Donna 3202 earned her a record of BR 5@94; WR 5@102 and YR 4@106, including the elite calving ease sire, Coleman Maverick 5322, and Sadler Top Gun 1030, a featured herd sire in the upcoming Sadler Ranches sale.

COLEMAN MAVERICK 5322 •
Son of Donna 3202



SADLER TOP GUN 1030 •
Son of Donna 3202



DONNA 3202 EMBRYOS

SQUARE B ATLANTIS 8060
MONTANA JUDGEMENT 1038
20193391
#MILL BRAE FP JOANIE 3063

#WULFFS EXT 6106
#COLEMAN DONNA 3202
17783501
COLEMAN DONNA 714

S A V RAINFALL 6846
ELBANNA OF CONANGA 1209
#CONNEALY FINAL PRODUCT
ELBASTA OF CONANGA 9703

#N BAR EMULATION EXT
WULFFS ERICA DIANNA C116
#CONNEALY ONWARD
COLEMAN DONNA 386

• 3 SEXED FEMALE IVF EMBRYOS (US ONLY) - GUARANTEE OF 1 PREGNANCY



DONNA 3202 EMBRYOS

SITZ STELLAR 726D
SITZ BARRICADE
19078148
SITZ BARBARAMERE NELL 73T

#WULFFS EXT 6106
#COLEMAN DONNA 3202
17783501
COLEMAN DONNA 714

#MOHNEN SUBSTANTIAL 272
SITZ PRIDE 200B
SITZ SUPERIOR 10971
SITZ BARBARAMERE NELL 73T

#N BAR EMULATION EXT
WULFFS ERICA DIANNA C116
#CONNEALY ONWARD
COLEMAN DONNA 386

• 3 CONVENTIONAL IVF EMBRYOS (CN EXPORTABLE) - GUARANTEE OF 1 PREGNANCY



MONTANA DONNA 1387

BD: 5/24/2021

REG #: 20085042

TATT00: 1387

#O C C JUNEAU 807J
COLEMAN ROCK 7200
19107936
COLEMAN DONNA 714

#O C C EMBLAZON 854E
O C C DIXIE ERICA 903E

#CONNEALY ONWARD
COLEMAN DONNA 386

#N BAR EMULATION EXT
WULFFS ERICA DIANNA C116

#CONNEALY ONWARD
COLEMAN DONNA 386



\$M
66
\$W
58

#WULFFS EXT 6106
#COLEMAN DONNA 3202
17783501
COLEMAN DONNA 714

CED	BW	WW	YW	DOC	CLAW	ANGLE	HP	MM	MB	RE
6	1.7	69	120	28	0.33	0.45	12.5	19	0.2	0.39



COLEMAN ROCK 7200 • Sire of Donna 1387

- Long-spined and deep-sided with elegant maternal breed character, this double-bred Donna 714 is backed by many generations of predictability and maternal function.
- Sired by the popular balanced-trait sire, Rock, and from the foundation Donna 3202, Lot 13C posts a Claw EPD in the top 3% of the breed, with rankings in the top 10% for DOC; the top 15% for PAP and the top 25% for WW.



Double-bred Donna 714

MONTANA DONNA 1387 • Lot 13C



MONTANA DONNA 1044

BD: 2/17/2021

REG #: 20193396

TATT00: 1044

#COLEMAN CHARLO 0256
S A V RAINFALL 6846
18578963
S A V BLACKCAP MAY 4136

#O C C PAXTON 730P
BOHI ABIGALE 6014

#S A V 8180 TRAVELER 004
#S A V MAY 2397

#WULFFS EXT 6106
#COLEMAN DONNA 3202
17783501
COLEMAN DONNA 714

#N BAR EMULATION EXT
WULFFS ERICA DIANNA C116

#CONNEALY ONWARD
COLEMAN DONNA 386



\$M
94
\$W
74

CED	BW	WW	YW	DOC	CLAW	ANGLE	HP	MM	MB	RE
14	-0.4	66	113	27	0.52	0.52	14.3	27	0.56	0.4

- With a classic maternal look and blending two of the breed's dominant prepotent dams 714 and 4136, Donna 1044 is the next step in maternal performance, ranking in the top 1% for \$M; the top 3% for CED; the top 15% for DOC; the top 25% for HP and the top 35% for WW.
- Due to calve 3/4/23 with a heifer pregnancy sired by Brooking Can Am 0012 (Reference Sire E).



Top 1% \$M

MONTANA DONNA 1044 • Lot 13D

MONTANA Donna 1553

Uniquely Robust



BC ROBUST 0807
Sire of Donna 1553



COLEMAN DONNA 8194
Dam of Donna 1553



MONTANA DONNA 1553

BC: 7/3/2021

REG #: 20104099

TATTOO: 1553

BC SURVEYOR 680D
BC ROBUST 0807

18456252

BC 327-8 CP BELLE 0-807

S A V PRESIDENT 6847

COLEMAN DONNA 8194

19400594

COLEMAN DONNA 714

#BC EAGLE EYE 110-7
BC 2266 PRIDES LASS 4132 680

BC PURE PRIDE 327-8
BC 607 CP BELLE MF 807

#COLEMAN CHARLO 0256
S A V BLACKCAP MAY 4136

#CONNEALY ONWARD
COLEMAN DONNA 386



\$M
69
\$W
55

CED	BW	WW	YW	DOC	CLAW	ANGLE	HP	MM	MB	RE
3	3.4	71	117	22	0.2	0.38	13.3	17	-0.05	0.59

- Sired by the popular outcross sire, Robust, Donna 1553 is a shapely three-dimensional natural daughter of the powerful Donna 8194.
- Produced from a young donor in the program with a progeny record of WR 2@105, Lot 14 posted a WR of 105 and a YR of 106 and ranks in the top 1% of the breed for Claw; the top 20% for WW and the top 35% for HP, YW, \$M and DOC.



Donna 438

Proven and Prolific Productivity

- Dam of Lots 15A-B and 16.
- Full sisters include Donna 439 who produced the \$270,000 ¼ interest Coleman Glacier 041, along with daughters selling for \$26,000 and \$21,000 in the 2021 Coleman sale, and Donna 506, the dam of Ingram Charcoal 7001 in the Breeder Link lineup. A full brother, Playmaker 427, is a balanced trait sire at Genex.
- Rising through the ranks as one of the most productive and prolific dams in the Montana program, Donna 438 shows a progeny record of BW 5@94; WW 5@109; YW 3@108 and RE 32@102, earning her a place among the breed's top 15% for Claw; the top 20% for HP, SC and RE; and the top 30% for WW and YW. Her 8 daughters in production post an average NR of 104. Daughters of 438 are working in the Bridwell Angus Ranch herd in CA; for Hindman Angus in IA and in the Paul Michael herd in IN; while a son, Montana High Power 0318, is a featured sire in the Griffin Angus Ranch program in MT.



COLEMAN GLACIER 041 • The \$270,000 top-seller in the 2022 Coleman sale produced by a full sister to Donna 438



INGRAM CHARCOAL 7001 • Member of the Breeder Link lineup produced by a full sister to Donna 438



COLEMAN DONNA 439 • Full sister to Donna 438

MONTANA Donna 9048

Top 3% HP and Top 15% \$M and \$W



MONTANA HIGH POWER 0318 • Full brother-in-blood to Lot 15 at Griffin Angus Ranch



MONTANA DONNA 9048

BD: 4/16/2019

REG #: 1960S115

TATT00: 9048

RITO 707 OF IDEAL 3407 7075
#S A V RESOURCE 1441
17016597

S A V BLACKCAP MAY 4136

#GDAR GAME DAY 449
COLEMAN DONNA 438
17914041
COLEMAN DONNA 714

#R R RITO 707
IDEAL 3407 OF 1418 076

#S A V 8180 TRAVELER 004
#S A V MAY 2397

#BOYD NEW DAY 8005
#G D A R MISS WIX 474
#CONNEALY ONWARD
COLEMAN DONNA 386



\$M
75
\$W
67

CED	BW	WW	YW	DOC	CLAW	ANGLE	HP	MM	MB	RE
3	1.4	70	131	16	0.41	0.49	178	27	0	0.96

- An absolute powerhouse, Donna 9048 is the result of blending Resource with the productive Donna 438, making her a full sister-in-blood to Montana High Power 0318, working in the Griffin Angus Ranch program in MT, and to the \$270,000 ¼ interest Coleman Glacier 041.

- Recording a WR of 102 on her first calf, Donna 9048 ranks in the breed's top 3% for HP; the top 4% for RE; the top 10% for WW and YW; and the top 15% for Claw, \$M and \$W.

- Due to calve 3/12/23 with an unsexed pregnancy sired by Brooking Revival 0074 (Reference Sire D).



MONTANA DONNA 1011

BD: 2/8/2021

REG #: 20193366

TATT00: 1011

#COLEMAN CHARLO 0256
S A V RAINFALL 6846

18578963

S A V BLACKCAP MAY 4136

#O C C PAXTON 730P
BOHI ABIGALE 6014
#S A V 8180 TRAVELER 004
#S A V MAY 2397#GDAR GAME DAY 449
COLEMAN DONNA 438

17914041

COLEMAN DONNA 714

#BOYD NEW DAY 8005
#G D A R MISS WIX 474
#CONNEALY ONWARD
COLEMAN DONNA 386

SM
77
SW
69

CED	BW	WW	YW	DOC	CLAW	ANGLE	HP	MM	MB	RE
3	3.2	74	136	8	0.28	0.43	12.9	29	0.08	0.68

- Pure power and performance. Donna 1011 blends the maternal sire, Rainfall, with the productive Donna 438, and recorded the heaviest YW of all Spring ETs. Ranks in the top 1% for Claw; the top 10% for YW and SC; and the top 15% for WW, \$M and \$W.
- Due to calve 4/13/23 with an unsexed pregnancy sired by Brooking Can Am 0012 (Reference Sire E).



**MONTANA JUNCTION
1017** • Full brother to Lots
16A-B



MONTANA DONNA 1014

BD: 2/13/2021

REG #: 20193369

TATT00: 1014

#COLEMAN CHARLO 0256
S A V RAINFALL 6846

18578963

S A V BLACKCAP MAY 4136

#O C C PAXTON 730P
BOHI ABIGALE 6014
#S A V 8180 TRAVELER 004
#S A V MAY 2397#GDAR GAME DAY 449
COLEMAN DONNA 438

17914041

COLEMAN DONNA 714

#BOYD NEW DAY 8005
#G D A R MISS WIX 474
#CONNEALY ONWARD
COLEMAN DONNA 386

SM
81
SW
57

CED	BW	WW	YW	DOC	CLAW	ANGLE	HP	MM	MB	RE
2	1.4	57	108	9	0.4	0.44	20.5	28	0.44	0.63

- Elegantly refined and feminine, Donna 1014 is a full sister to Montana Junction 1017, a featured Lot in the upcoming Montana Ranch bull sale. Ranking in the top 1% of the breed for HP, Lot 16B also earns a place in the top 10% for \$M and the top 15% for Claw.
- Due to calve 2/12/23 with a heifer pregnancy sired by Brooking Can Am 0012 (Reference Sire E).



Top 1% Claw

MONTANA DONNA 1011 • Lot 16A



Top 1% HP

MONTANA DONNA 1014 • Lot 16B



MONTANA DONNA 0208 • Full Sister to Lot 17



MONTANA DONNA 9001 • Lot 18



MONTANA DONNA 1224

BD: 7/6/2021

REG #: 20133442

TATTOO: 1224

S A V RAINFALL 6846
MOHNEN DAKOTA 2528
19209934
#MOHNEN RUTH 972

#S A V RESOURCE 1441
COLEMAN DONNA 781
18838390
#COLEMAN DONNA 040

#COLEMAN CHARLO 0256
S A V BLACKCAP MAY 4136
CCC MERRITT 030
MOHNEN RUTH 1689

RITO 707 OF IDEAL 3407 7075
S A V BLACKCAP MAY 4136

#O C C JUNEAU 807J
COLEMAN DONNA 714



SM
62
\$W
66

CED	BW	WW	YW	DOC	CLAW	ANGLE	HP	MM	MB	RE
1	3.8	77	134	16	0.53	0.58	14.9	27	0.19	0.72

- Produced from the foundation Donna 781, this daughter of the sensational sire, Dakota, is deep-ribbed, and great-footed with extra stature and stoutness. Descending from Donna 040, a Pathfinder full sister to Coleman Rock 7200, Donna 1224 is a full sister to Donna 0205, the \$11,500 selection of Crooked Creek Cattle of GA from the 2021 Montana sale.
- Recording an IMF ratio of 116, Lot 17 ranks in the top 10% for WW; the top 15% for YW; and the top 20% for HP and \$W.



COLEMAN DONNA 781 • Dam of Lots 17 & 18



MONTANA DONNA 9001

BD: 2/11/2019

REG #: 19383645

TATTOO: 9001

#COLEMAN CHARLO 0256
COLEMAN MAVERICK 5322
18402732
#COLEMAN DONNA 3202

#S A V RESOURCE 1441
COLEMAN DONNA 781
18838390
#COLEMAN DONNA 040

#O C C PAXTON 730P
BOHI ABIGALE 6014
#WULFFS EXT 6106
COLEMAN DONNA 714

RITO 707 OF IDEAL 3407 7075
S A V BLACKCAP MAY 4136

#O C C JUNEAU 807J
COLEMAN DONNA 714



SM
72
\$W
45

CED	BW	WW	YW	DOC	CLAW	ANGLE	HP	MM	MB	RE
14	-1.4	40	83	20	0.39	0.49	12.1	25	0.52	0.42

- With a who's who maternal pedigree and a dam stack second to none, Donna 9001 traces twice to Donna 714 through two of her most prolific daughters - 040 and 3202. Exquisitely feminine, Lot 18 earned progeny ratios of WW 100; YW 102; IMF 105 and RE 101 on her first calf, a bull sired by Outcross destined to be a feature of the upcoming Montana bull sale.
- Due to calve 2/19/23 with a bull pregnancy sired by Brooking Revival 0074 (Reference Sire D).



MONTANA HENRIETTA 1286

BD: 7/8/2021

REG #: 20133490

TATTOO: 1286

S A V RAINFALL 6846
SQUARE B ATLANTIS 8060
19405249
ELBANNA OF CONANGA 1209

#COLEMAN CHARLO 0256
S A V BLACKCAP MAY 4136
#CONNEALY CONSENSUS
ELBASTA OF CONANGA 9703



#S WHITLOCK 179
ANKONY MISS HENRIETTA 8064
19086170
SITZ HENRIETTA PRIDE 285U

#S CHISUM 6175
#S PRIDE ANNA 709
#CONNEALY THUNDER
SITZ HENRIETTA PRIDE 81M

\$M
73
\$W
58

CED	BW	WW	YW	DOC	CLAW	ANGLE	HP	MM	MB	RE
7	0.9	68	120	23	0.46	0.49	178	18	0.47	0.75

- Stemming from Henrietta Pride 285U, the maternal sister to the Pathfinder Sire Sitz Upward 307R and Henrietta Pride 643T, this soft-sided three-dimensional Atlantis daughter ranks in the top 4% of the breed for HP and the top 25% for both WW and \$M.



SITZ HENRIETTA PRIDE 285U • Maternal granddam of Lots 19-20



MONTANA HENRIETTA 1291

BD: 7/6/2021

REG #: 20133493

TATTOO: 1291

S A V RAINFALL 6846
SQUARE B ATLANTIS 8060
19405249
ELBANNA OF CONANGA 1209

#COLEMAN CHARLO 0256
S A V BLACKCAP MAY 4136
#CONNEALY CONSENSUS
ELBASTA OF CONANGA 9703



#S WHITLOCK 179
ANKONY MISS HENRIETTA 8062
19086164
SITZ HENRIETTA PRIDE 285U

#S CHISUM 6175
#S PRIDE ANNA 709
#CONNEALY THUNDER
SITZ HENRIETTA PRIDE 81M

\$M
65
\$W
62

CED	BW	WW	YW	DOC	CLAW	ANGLE	HP	MM	MB	RE
10	-0.2	66	120	17	0.38	0.6	13.6	23	0.5	0.56

- Produced by a dam with a progeny record of WW 2@102, this powerfully-constructed Atlantis daughter is from the same family that gave us Upward 307R, Henrietta Pride 643T and Unique 5635. Lot 20 recorded a WR of 101 and ranks in the top 10% of the breed for Claw; the top 20% for BW and CED; and the top 30% for YW.



MONTANA HENRIETTA 1286 • Lot 19



MONTANA HENRIETTA 1291 • Lot 20



MONTANA DIXIE ERICA 1238

BD: 7/3/2021

REG #: 20133451

TATTOO: 1238

#CONNEALY CONFIDENCE PLUS
MILL BRAE BENCHMARK 9016

19503604

#MILL BRAE FP JOANIE 3063

#CONNEALY CONFIDENCE 0100
ELBANNA OF CONANGA 1209

#CONNEALY FINAL PRODUCT
#MILL BRAE FA JOANIE 9263



S A V DIMENSION 7092
MONTANA DIXIE ERICA 9017

19603227

WERNER DIXIE ERICA 2202

#S A V RESOURCE 1441
S A V EMBLYNETTE 4575

#S A V PROSPERITY 9131
GCC DIXIE ERICA 712S

\$M
79
\$W
69

CED	BW	WW	YW	DOC	CLAW	ANGLE	HP	MM	MB	RE
4	2.9	73	134	18	0.31	0.37	15.6	32	0.41	0.93

- Descending from the maternal sister to War Party 1472, Dixie Erica 2202, who has served as a donor in both the Montana Ranch and Bruin Ranch programs, this balanced-trait Benchmark daughter is deep-sided and attractively patterned. Weaning at 62% of her dam's weight, Lot 21 recorded BR 99; WR 100; YR 101; IMF 113 and RE 109 to earn rankings in the breed's top 2% for Claw and the top 15% for WW, YW, HP, RE, \$M and \$W.



WERNER DIXIE ERICA 2202 • Grandam of Lot 21



MONTANA DIXIE ERICA 1238 • Lot 21



MONTANA RITA 1337

BD: 7/21/2021

REG #: 20133528

TATTOO: 1337

#CONNEALY CONFIDENCE PLUS
MILL BRAE BENCHMARK 9016

19503604

#MILL BRAE FP JOANIE 3063

#CONNEALY CONFIDENCE 0100
ELBANNA OF CONANGA 1209

#CONNEALY FINAL PRODUCT
#MILL BRAE FA JOANIE 9263



#S A V RENOWN 3439
MONTANA RITA 9247

19512062

MONTANA RITA 6131

RITO 707 OF IDEAL 3407 7075
S A V BLACKCAP MAY 4136

#MILL BRAE IDENTIFIED 4031
MONTANA RITA A079

\$M
68
\$W
76

CED	BW	WW	YW	DOC	CLAW	ANGLE	HP	MM	MB	RE
11	-1.7	75	142	27	0.47	0.48	14.4	31	0.69	0.88

- Produced from a gorgeous young dam recording WR 104 and YR 102, Rita 1337 posted an IMF ratio of 150. Loaded with look, this daughter of Benchmark descends from a maternal grandam who was a featured Lot in the 2020 sale going to Black Locust Farm in VA. Ranks in the top 5% for BW; the top 10% for YW and \$W; and the top 15% for CED, WW, DOC and RE.



MONTANA RITA 9247 • Dam of Lot 22



MONTANA RITA 1337 • Lot 22

MADAME *Pride* 9838

Ideal Type and Function

- Donor dam of Lot 23.
- Long-spined, deep-ribbed and exquisitely feminine, Madame Pride 9838 is ideal from every angle. The Pathfinder Dam of Madame Pride 9838 ranks as one of the truly elite dams in the breed and produced the \$225,000 SAV Anthem 0042; the \$200,000 SAV Circuit Breaker 7136; and the \$82,500 SAV Glory Days 1832.
- Montana Jennings 1001, the powerful first calf from Madame Pride 9838, balanced a BR 96 with a WR 104 and is slated to join his sire, Benchmark, in the Montana herd sire battery.



MONTANA JENNINGS 1001
Son of Madame Pride 9838



SAV MADAME PRIDE 3145
Pathfinder Dam of Madame Pride 9838



SAV ANTHEM 0042
\$225,000 maternal brother to Madame Pride 9838



MADAME PRIDE 9838 EMBRYOS

S A V RENOVATION 6822
BROOKING REVIVAL 0074
20057293
SOO LINE ROSE 1019

S A V RAINDANCE 6848
S A V MADAME PRIDE 9838
19506920
#S A V MADAME PRIDE 3145

#S A V RENOWN 3439
#S A V MADAME PRIDE 0151
#SOO LINE MOTIVE 9016
E A ROSE 918
#COLEMAN CHARLO 0256
S A V BLACKCAP MAY 4136
#S A V PRIORITY 7283
S A V MADAME PRIDE 1171



- 3 SEXED FEMALE IVF EMBRYOS (US ONLY) – GUARANTEE OF 1 PREGNANCY

MONTANA *Rita* 7112

Good from the Ground Up

- Donor dam of Lots 24A-B.
- Selected by Front Range Investments as the \$34,000 top-selling female in the 2020 sale, Rita 7112 blends genotypic superiority, real world maternal functionality and phenotypic excellence as well as any in the business. Right-sized, ideal-uddered, great-footed and solid from the ground up, Rita 7112 has a progeny record of BR 2@95; WR 2@101; YR 1@102; IMF 3@109; RE 3@103, and ranks in the top 1% of the breed for \$M and \$W, while also ranking in the top 10% for WW, YW, HP and DOC; the top 15% for CED and BW; and the top 20% for Claw, RE and \$C.
- Sons from Rita 7112 include Guidry 9257, a feature of the 2020 sale going to Watson Ranch of MT, and Jacoby 1002 at Kemp Brothers in ON, CN.



MONTANA GUIDRY 9257 • Son of Rita 7112



RITA 7112 EMBRYOS

SITZ STELLAR 726D
SITZ BARRICADE
19078148
SITZ BARBARAMERE NELL 73T

ELLINGSON CHAPS 4095
MONTANA RITA 7112
18844593
MONTANA RITA C065

#MOHNEN SUBSTANTIAL 272
SITZ PRIDE 200B

SITZ SUPERIOR 10971
SITZ BARBARAMERE NELL 73T

#S A V RESOURCE 1441
#E A BLACKCAP 0360

#CONNEALY COMRADE 1385
RIVERBEND RITA W1223



• 3 CONVENTIONAL IVF EMBRYOS (US ONLY) – GUARANTEE OF 1 PREGNANCY



RITA 7112 EMBRYOS

#MOHNEN SUBSTANTIAL 272
SITZ STELLAR 726D
18397542
SITZ PRIDE 200B

ELLINGSON CHAPS 4095
MONTANA RITA 7112
18844593
MONTANA RITA C065

#BENFIELD SUBSTANCE 8506
MOHNEN GLYN MAWR ELBA 1758

#CONNEALY FINAL PRODUCT
#SITZ PRIDE 308Y

#S A V RESOURCE 1441
#E A BLACKCAP 0360

#CONNEALY COMRADE 1385
RIVERBEND RITA W1223



• 3 CONVENTIONAL IVF EMBRYOS (US ONLY) – GUARANTEE OF 1 PREGNANCY

MONTANA *Erica* 9074

Fresh Maternal Genetics



MONTANA OUTCROSS 9077
Full brother to Erica 9074



HUMMEL ARGENTINE
Sire of Lot 25



ERICA 9074 FLUSH

DON APARICIO SERRUCHO57 MAXI
HUMMEL ARGENTINE
19919948
RUBETA FONTANA 7567-T/E-
#S A V 004 DENSITY 4336
MONTANA ERICA 9074
19605056
BELVIN TRES MARIAS PORTO3616
DON JOSE 176 MAXI
DON APARICIO SERRANIAS 57
CONSENZA DON ROBERTO 338 T/E
RUBETA FONTANA 6207-T/E-
#S A V 8180 TRAVELER 004
S A V MAY 7238
TRES MARIAS 6301 ZORZAL
TRES MARIAS 6876 PORTO 6226



- FLUSH OF SIX SEXED HEIFER IVF EMBRYOS – GUARANTEE OF 2 PREGNANCIES
- A fresh, one-of-a-kind outcross mating blending the best in South American genetics.
- Erica 9074, a long-spined, neat made and perfect uddered visitor favorite, is a full sister to the \$26,000 Montana Outcross 9077 produced from combining the proven Pathfinder maternal sire, Density, with a dam bred in the famed Tres Marias herd in Argentina. Intensely line-bred to Erica 2862 and Kate 2208, both foundation females at Tres Marias, the dam of Erica 9074 is sired by Zorzal, a Palermo Supreme Champion and dominant sire in South America.

MONTANA *Rita* 7068

Montana Ranch Donor



DEER VALLEY RITA 4147

Dam of Lots 26 and 28; Dam of Rita 9093



MONTANA RITA 0066

Maternal sister to Lot 26



MONTANA RITA 7068

BD: 9/12/2017

REG #: 19010444

TATTOO: 7068

#EF COMMANDO 1366
#BALDRIDGE BRONC
18229425 BALDRIDGE ISABEL Y69

#PLATTEMERE WEIGH UP K360
#DEER VALLEY RITA 4147
17873649 DEER VALLEY RITA 1126

#EF COMPLEMENT 8088
RIVERBEND YOUNG LUCY W1470
#STYLES UPGRADE J59
BALDRIDGE ISABEL T935
#SITZ UPWARD 307R
#BARBARA OF PLATTEMERE 337
#S A V BISMARCK 5682
G A R OBJECTIVE 2345



\$M
74
\$W
91

CED	BW	WW	YW	DOC	CLAW	ANGLE	HP	MM	MB	RE
9	0.3	80	132	10	0.51	0.39	10.8	36	0.57	0.5

- With front pasture good looks and tremendous production, Rita 7068 is moderate-framed, sweet-uddered and stout from end to end. A second-generation Montana donor, Lot 26 is a maternal sister to Glacier 9123, the popular 2nd high-selling bull of the 2020 bull sale.
- Rita 7068 has a progeny record of BR 2@100; WR 2@111; YR 2@105; IMF 2@124 and RE 2@98. Ranks in the top 1% for \$W; the top 3% for WW; the top 10% for \$M; the top 15% for \$M and the top 25% for both CED and BW. A son, Tahoe 9326, was a featured herd sire selection of Yorlum Cattle Co. from the 2020 bull sale.
- Produced 56 quality embryos on 4 collections for an average of 14.
- Sells with a heifer calf at side (Lot 26A) born 7/7/22 sired by Tehama Patriarch F028. Tattoo: 2307; BW: 78 lbs; AAA 20412898.

MONTANA *Rita* 9093

Top 2% \$W and Top 4% \$M



MONTANA RITA 0070
Maternal sister to Rita 9093



MONTANA GLACIER 9123
Full brother to Rita 9093



RITA 9093 EMBRYOS

S A V RAINFALL 6846
SQUARE B ATLANTIS 8060
19405249
ELBANNA OF CONANGA 1209

#S A V RESOURCE 1441
MONTANA RITA 9093
19605132
DEER VALLEY RITA 4147

#COLEMAN CHARLO 0256
S A V BLACKCAP MAY 4136

#CONNEALY CONSENSUS
ELBASTA OF CONANGA 9703

#RITO 707 OF IDEAL 3407 7075
S A V BLACKCAP MAY 4136

#PLATTEMERE WEIGH UP K360
DEER VALLEY RITA 1126



- 3 SEXED FEMALE IVF EMBRYOS (CN EXPORTABLE)
- A proven mating from one of the top young females in the program. Moderate-framed, big-ribbed and expressively-muscled with stunning femininity and breed character, Rita 9093 is a second-generation Montana donor and is from the same mating that produced Glacier 9123, the popular 2nd high-selling bull of the 2020 sale. The first calf from Rita 9093, a full sister to this mating, recorded BR 99; WR 110; YR 105; IMF 170 and RE 99.
- Maternal sisters to Rita 9093 include Rita 0070, a \$12,500 selection of ZWT Ranch in the 2021 sale where Rita 0066, a maternal sister, sold for \$9,750 to Melder Ranch, and Rita 0071 went to RC Cattle for \$7,750.

SRA *Rita* 7137

Top 2% \$W



MONTANA RITA 9052
Maternal sister to Lot 28



MONTANA RITA 0071
Maternal sister to Lot 28



SRA RITA 7137

BD: 9/23/2017

REG #: 19133924

TATTOO: 7137

#CONNEALY CONSENSUS
#K C F BENNETT FORTRESS
17259012
THOMAS PATRICIA 9705

#PLATTEMERE WEIGH UP K360
DEER VALLEY RITA 4147
17873649
DEER VALLEY RITA 1126

#KMK ALLIANCE 6595 187
BLINDA OF CONANGA 004

#S S OBJECTIVE T510 OT26
THOMAS PATRICIA 71138

#SITZ UPWARD 307R
#BARBARA OF PLATTEMERE 337
#S A V BISMARCK 5682
G A R OBJECTIVE 2345



\$M
72
\$W
79

CED	BW	WW	YW	DOC	CLAW	ANGLE	HP	MM	MB	RE
5	1	69	114	10	0.55	0.44	13.1	34	0.89	0.4

- This maternal sister to Glacier 9123, the 2nd high-selling bull of the 2020 sale carries a progeny record of WR 2@108; YR 2@104 and IMF 2@114 and ranks in the top 2% for \$W; the top 15% for WW and MB; the top 20% for \$M and the top 30% for HP.
- Her dam has progeny sales of over \$200,000 including three daughters sold for an average of \$10,000 and two sons for an average of \$8,500 in the 2021 sale.
- Sells with a bull calf at side (lot 28A) born 7/17/22 sired by Square B Atlantis 8060. Tattoo: 2324; BW: 88 lbs; AAA 20412911.

MONTANA *Abigale* 8005

Full sister to Charlo 0256



MONTANA PATHFINDER 0014
Son of Lot 29



COLEMAN CHARLO 0256
The Pathfinder full brother to Lot 29



MONTANA ABIGALE 8005

BD: 2/2/2018

REG #: 19144934

TATTOO: 8005

O C C FOCUS 813F
#O C C PAXTON 730P
14940735
O C C BLACKBIRD 736K

#SITZ TRAVELER 8180
BOHI ABIGALE 6014
15353355
S A V ABIGALE 6062

#BASIN RAINMAKER 654X
DIXIE ERICA OF C H 1019

#O C C GREAT PLAINS 943G
O C C BLACKBIRD 824G

#G D A R TRAVELER 71
SITZ EVERELDA ENTENSE 1137

#BON VIEW EMULATION EXT 473
CIRCLE A ABIGALE 3008



SM
60
SW
44

CED	BW	WW	YW	DOC	CLAW	ANGLE	HP	MM	MB	RE
8	0.6	44	83	-4	0.36	0.38	9.5	22	0.25	0.44

- Charlo 0256 earns an industry-wide reputation for his deep-sided, broody and easy-fleshing daughters. His full sister, Abigale 8005, carries on that rich tradition and is a true genetic treasure.
- Pathfinder 0014, the first son from Abigale 8005, was a \$9,000 selection of Yorlum Cattle Co. from the 2021 sale, while three daughters from Lot 29 are retained in the Montana program.
- Produced 8 quality embryos on 4 collections for an average of 2.
- Due to calve 3/13/23 with an unsexed pregnancy sired by Brooking Revival 0074 (Reference Sire D).



MONTANA *Rita* 7204

Third Generation Montana Donor



MONTANA GUIDELINE 9304
Son of Rita 7204



MONTANA JUST IN TIME 1080
Son of Rita 7204



MONTANA RITA 7204

BD: 7/19/2017

REG #: 18844674

TATTOO: 7204

#WERNER WAR PARTY 2417
WERNER WAR PARTY 1472
17236833
GCC DIXIE ERICA 712S

#SITZ UPWARD 307R
CHIMNEY TOP UPW RITA Y44
17208721
RITA 8H17 OF RITA 3110 TOTAL

#CONNEALY ONWARD
BAAR USA LADY JAYE 489
#O C C MISSING LINK 830M
O C C DIXIE ERICA 620N

#CONNEALY ONWARD
SITZ HENRIETTA PRIDE 81M
#TC TOTAL 410
RITA 3110 OF RITA 148 616



SM
69
SW
70

CED	BW	WW	YW	DOC	CLAW	ANGLE	HP	MM	MB	RE
6	2	73	123	13	0.53	0.5	11.1	24	0.15	0.86

- A big-ribbed and stoutly-constructed 3rd generation donor in the program. Descending from a dam with progeny ratios of BR 6@92; WR 6@106 and YR 5@103 and a grandam showing a progeny record of BR 5@99; WR 5@102; YR 5@102; IMF 72@102; RE 72@100, Rita 7204 posts a progeny record of BR 3@100; WR 3@100; YR 3@100 and IMF 5@113 with a calving interval of 4@361.
- Montana Just In Time 1080, her son, is a herd sire prospect in the upcoming bull sale, while another son, Guideline 9304, was the lead-off War Party 1472 son selected by Gilliland Livestock of CA in the 2020 sale.
- Produced 8 quality embryos on 1 collection.
- Sells with a bull calf at side (Lot 30A) born 7/6/22 sired by SAV Renown 3439. Tattoo: 2318; BW: 80 lbs; AAA 20412907.

MONTANA *Blackcap* 7070

WR 3@106



MONTANA EMPOWER 7072
Full brother to Lot 31



RIVERBEND BLACKCAP W1033
Dam of Lot 31



MONTANA BLACKCAP 7070

BO: 4/7/2017

REG #: 18797042

TATT00: 7070

#CONNEALY DUBLIN 8223
#CONNEALY GUINNESS
17031279
PANDA OF CONANGA 3609

#O C C EMBLAZON 854E
#RIVERBEND BLACKCAP W1033
16406148
RITA 3B2 OF 2536 BW

CONNEALY FULL FREIGHT
BLACK RINA OF CONANGA 69
EGL TARGET 1148
PONDERRA OF CONANGA 750

#D H D TRAVELER 6807
DIXIE ERICA OF C H 1019
#B C C BUSHWACKER 41-93
G A R PRECISION 2536



SM
60
SW
69

CED	BW	WW	YW	DOC	CLAW	ANGLE	HP	MM	MB	RE
6	1.5	61	106	7	0.5	0.54	12.6	34	0.95	0.43

- A big-bodied, heavy-muscled daughter of the Pathfinder Sire, Guinness, Lot 31 records a calving interval of 4@364 and progeny ratios of WR 3@106; YR 1@105 and IMF 1@181, earning her a place in the top 10% of the breed for \$W and MB, along with the top 30% for WW and \$B.
- Blackcap 0294, her daughter, is working in the Pitts Angus herd in MO, while a son, Pathfinder 1358, will be a highlighted Lot in the upcoming bull sale at Montana Ranch.
- None Better A038, a maternal brother, serves as a \$11,500 herd sire in the Koupal's B&B Angus program in SD, while three full brothers to Lot 31 sold for an average of more than \$7,000 in the 2018 sale.
- Sells with a heifer calf at side (Lot 31A) born 7/11/22 sired by Brooking Can Am 0012. Tattoo 2323; BW 76 lbs; AAA 20412910.



MONTANA MISS AMY 7164

BD: 7/7/2017

REG #: 18844636

TATTOO: 7164

#O C C PAXTON 730P
#COLEMAN CHARLO 0256
16879074 BOHI ABIGALE 6014

O C C FOCUS 813F
O C C BLACKBIRD 736K
#SITZ TRAVELER 8180
S A V ABIGALE 6062



#A A R TEN X 7008 S A
M A R MISS AMY 1348
17612153 CAR MISS AMY 591

#MYTTY IN FOCUS
#A A R LADY KELTON 5551
#HYLINE RIGHT TIME 338
#CAR MISS AMY 121

SM
71
\$W
66

CED	BW	WW	YW	DOC	CLAW	ANGLE	HP	MM	MB	RE
6	1.2	62	116	2	0.44	0.44	13	29	0.55	0.4

- Produced from a dam who served as a donor at Montana Ranch now at Thomson Land & Livestock, this gorgeously feminine and broody female posts a progeny record of BR 3@94; WR 3@101; YR 2@106 and RE 2@107 including a son, War Party 9290, working in the DC Smith herd in OK.
- Sells with a heifer calf at side (lot 32A) born 8/4/22 sired by Koupals B&B Pathfinder 8106. Tattoo 2362; BW 70 lbs; AAA 20412945.



MONTANA WAR PARTY 9290 • Son of Lot 32



MONTANA MISS AMY 7164 • Lot 32



MONTANA BEAUTY 7008

BD: 2/3/2017

REG #: 18798269

TATTOO: 7008

#EF COMPLEMENT 8088
#EF COMMANDO 1366
17082311 RIVERBEND YOUNG LUCY W1470

#BASIN FRANCHISE P142
EF EVERELDA ENTENSE 6117
#B/R AMBUSH 28
RIVERBEND YOUNG LUCY T1080



#G A R PROPHET
BOBO BEAUTY 3532
17637407 V A R BEAUTY 0040

#C R A BEXTOR 872 5205 608
G A R OBJECTIVE 1885
#SUMMITCREST COMPLETE 1P55
V A R BEAUTY 4031

SM
71
\$W
72

CED	BW	WW	YW	DOC	CLAW	ANGLE	HP	MM	MB	RE
9	-0.2	59	93	7	0.53	0.49	76	29	1.39	0.69

- Deep-sided, easy-fleshing and superbly-uddered, Beauty 7008 is a herd favorite and has a progeny record of BR 3@91; WR 3@103; YR 2@101 and RE 2@106 with a calving interval of 4@366, earning her a place in the top 1% of the breed for MB and the top 5% for \$W. Goalie 9229, her son, was an \$8,500 herd sire selection of Light Farms in VA from the 2020 Montana bull sale.
- Sells with a bull calf at side (lot 33A) born 7/8/22 sired by Montana Glacier 9123. Tattoo 2316; BW 74 lbs; AAA 20412906.



MONTANA GOALIE 9229 • Son of Lot 33



MONTANA BEAUTY 7008 • Lot 33



MONTANA BLACKCAP 7052

BD: 4/5/2017

REG #: 18843969

TATTOO: 7052

#EF COMMANDO 1366
BALDRIDGE COMPASS C041

18229488
BALDRIDGE ISABEL Y69

#EF COMPLEMENT 8088
RIVERBEND YOUNG LUCY W1470

#STYLES UPGRADE J59
BALDRIDGE ISABEL T935



#RITO REVENUE 5M2 OF 2536 PRE
RITA 12D1 OF RITA 7061 5M2

16965638
RITA 7061 OF RITA 5F56 OBJ

#G A R PREDESTINED
G A R PRECISION 2536

#S S OBJECTIVE T510 OT26
RITA 5F56 OF 1198 FD

\$M
80
\$W
76

CED	BW	WW	YW	DOC	CLAW	ANGLE	HP	MM	MB	RE
12	-1.2	59	101	13	0.42	0.42	13.2	38	1.16	0.14

- Exquisitely feminine and impeccably-uddered, Blackcap 7052 records progeny ratios of WR 3@104 and RE 2@112, earning her rankings in the top 3% of the breed for \$W and MB; the top 10% for CED, BW and \$M and the top 15% for Claw.

- Sells with a bull calf at side (lot 34A) born 7/15/22 sired by Montana Glacier 9123. Tattoo 2321; BW 86 lbs; AAA 20412909.



MONTANA BLACKCAP 9002 • Daughter of Lot 34



MONTANA BLACKCAP 7052 • Lot 34



MONTANA BLACKCAP 7053

BD: 4/5/2017

REG #: 18843970

TATTOO: 7053

#EF COMMANDO 1366
BALDRIDGE COMPASS C041

18229488
BALDRIDGE ISABEL Y69

#EF COMPLEMENT 8088
RIVERBEND YOUNG LUCY W1470

#STYLES UPGRADE J59
BALDRIDGE ISABEL T935



#RITO REVENUE 5M2 OF 2536 PRE
RITA 12D1 OF RITA 7061 5M2

16965638
RITA 7061 OF RITA 5F56 OBJ

#G A R PREDESTINED
G A R PRECISION 2536

#S S OBJECTIVE T510 OT26
RITA 5F56 OF 1198 FD

\$M
64
\$W
67

CED	BW	WW	YW	DOC	CLAW	ANGLE	HP	MM	MB	RE
12	-1.4	51	96	8	0.5	0.47	14.1	42	1.1	0.43

- Lot 35 maintains a calving interval of 4@368 and earned a progeny record of BR 3@100; WR 3@109 and 3@107, which gains her a place in the top 5% of the breed for BW and MB; the top 10% for CED and the top 15% for \$W.

- Sells with a bull calf at side (lot 35A) born 7/17/22 sired by Montana Glacier 9123. Tattoo 2342; BW 80 lbs; AAA 20412929.



RITA 12D1 OF RITA 7061 5M2 • Dam of Lots 34-35



MONTANA BLACKCAP 7053 • Lot 35

BLACK CEYLA of Conanga 0267

Dam of Lot 36



CONNELY SOUTHWIND 6176 • The \$45,000 maternal brother to Lot 36



MONTANA BLACK CEYLA 0024

BD: 3/8/2020

REG #: 19928828

TATTOO: 24

CONNELY NIOBRARA 5451
CONNELY GARY
18869442
HERTHA OF CONANGA 1639

#CONNELY ALL AROUND
BLACK CEYLA OF CONANGA 0267
16750528
BLACK CERA OF CONANGA 806

#CONNELY CONFIDENCE PLUS
BRITHA OF CONANGA 167

#CONNELY CONSENSUS
HERRA OF CONANGA 4462

#CONNELY WHITMAN
ENTRUST OF CONANGA 894

#CONNELY DANNY BOY
BLACK CEY OF CONANGA 803



\$M
55
\$W
84

CED	BW	WW	YW	DOC	CLAW	ANGLE	HP	MM	MB	RE
0	2.3	99	171	30	0.67	0.5	5.4	21	0.6	0.81

- A breed leader for growth, this daughter of the Montana and Lonker donor Black Ceyla 0267 ranks in the top 1% for WW and YW, while also earning a place in the top 2% for SW; the top 5% for DOC; the top 20% for \$B and the top 30% for \$C.
- Her angular and wedge-shaped dam has a progeny record of WR 7@101; YR 6@104; IMF 5@100; and RE 5@103. Progeny from 0267 include Southwind 6176 at ABS, the \$45,000 3rd high-seller at Connealy in 2017, and the \$32,500 Finnegan whose sons were the high-averaging sire group at the 2021 Connealy sale, where a son, Bohannon, was the \$130,000 high-selling bull going to ABS.
- Sells with a bull calf at side (lot 36A) born 7/28/22 sired by Mill Brae Benchmark 9016. Tattoo 2354; BW 84 lbs; AAA 20412939.

MONTANA *Blackcap* 1256

IMF ratio 184



MONTANA HONCHO 0223
\$17,000 maternal brother to Lot 37



MONTANA BLACKCAP 8179 • Dam of Lot 37



MONTANA BLACKCAP 1256

BD: 7/12/2021

REG #: 20133464

TATT00: 1256

S A V RAINFALL 6846
MOHNEN DAKOTA 2528
19209934
#MOHNEN RUTH 972

BALDRIDGE COLONEL C251
MONTANA BLACKCAP 8179
19185311
MONTANA BLACKCAP 6078

#COLEMAN CHARLO 0256
S A V BLACKCAP MAY 4136
CCC MERRITT 030
MOHNEN RUTH 1689
BALDRIDGE XPAND X743
BALDRIDGE ISABEL Y69
#CONNEALY GUINNESS
MONTANA BLACKCAP B110



\$M
69
\$W
64

CED	BW	WW	YW	DOC	CLAW	ANGLE	HP	MM	MB	RE
4	0.2	61	112	20	0.5	0.55	12	29	0.76	0.52

- This maternal sister to Honcho 0223, the \$17,000 top-selling bull of the 2021 sale going to Daigger-Orr of NE, is a densely-made daughter of the balanced-trait Dakota 2528.
- Blackcap 1256 earned individual ratios of BW 97; WW 103; YW 102; IMF 184 and RE 103, and is from a modest-sized productive dam who show a progeny record of BR 2@93; WR 2@110; YR 2@106; IMF 2@145 and RE 2@104.



MONTANA BLACKCAP 1279

BD: 7/11/2021

REG #: 20133484

TATT00: 1279

S A V RAINFALL 6846
MOHNEN DAKOTA 2528

19209934

#MOHNEN RUTH 972

ELLINGSON CHAPS 4095

MONTANA BLACKCAP 8143

19185283

MONTANA BLACKCAP 6088

#COLEMAN CHARLO 0256
S A V BLACKCAP MAY 4136

CCC MERRITT 030
MOHNEN RUTH 1689

#S A V RESOURCE 1441
#E A BLACKCAP 0360

GAFFNEY GAME TIME 370
MONTANA BLACKCAP B097



\$M
64
\$W
70

CED	BW	WW	YW	DOC	CLAW	ANGLE	HP	MM	MB	RE
1	3.8	73	130	6	0.51	0.56	12.8	33	0.45	0.47

- A high-performing, attractive patterned daughter of the balanced-trait sire, Dakota 2528, Blackcap 1279 has been a standout since birth and weaned off at 63% of her dam's weight with a ratio of 106 to go with her ratios of YW 106; IMF 103 and RE 102. Ranks in the top 15% of the breed for \$W, WW and YW.



MOHNEN DAKOTA 2528 • Sire of Lots 37-38



MONTANA BLACKCAP 1279 • Lot 38



MONTANA BLACKCAP 1302

BD: 7/5/2021

REG #: 20138682

TATT00: 1302

#MOHNEN SUBSTANTIAL 272
SITZ STELLAR 726D

18397542

SITZ PRIDE 200B

BASIN YUMA 4286

MONTANA BLACKCAP 6106

18553801

RIVERBEND BLACKCAP Y1027

#BENFIELD SUBSTANCE 8506
MOHNEN GLYN MAWR ELBA 1758

#CONNEALY FINAL PRODUCT
#SITZ PRIDE 308Y

#EXAR DENVER 2002B
BASIN LUCY 1022

#RITO REVENUE 5M2 OF 2536 PRE
RIVERBEND BLACKCAP W1276



\$M
58
\$W
61

CED	BW	WW	YW	DOC	CLAW	ANGLE	HP	MM	MB	RE
6	0.2	70	135	7	0.31	0.45	8.9	21	0.93	0.57

- From a productive dam stemming from the longtime Montana donor, Blackcap Y1027, this daughter of Stellar has brood cow written all over her. Deep and angular, Lot 39 recorded an IMF ratio of 152 and ranks in the top 2% for Claw; the top 10% for YW; the top 20% for \$B and MB and the top 25% for \$C and WW. Her dam shows a progeny record of WW 4@102.



RIVERBEND BLACKCAP Y1027 • Grandam of Lot 39



MONTANA BLACKCAP 1302 • Lot 39

MONTANA *Blackcap* 1057

Maternal sister to Empire



DEER VALLEY BLACKCAP 4153

Dam of Lots 40 and 41A-B



MONTANA BLACKCAP 0073

The \$30,000 maternal sister to
Lots 40 and 41A-B



MONTANA BLACKCAP 1057

BD: 2/12/2021

REG #: 20193407

TATTOO: 1057

S A V RAINFALL 6846
SQUARE B ATLANTIS 8060
19405249
ELBANNA OF CONANGA 1209

#PLATTEMERE WEIGH UP K360
DEER VALLEY BLACKCAP 4153
17873653
DEER VALLEY BLACKCAP 1122

#COLEMAN CHARLO 0256
S A V BLACKCAP MAY 4136
#CONNEALY CONSENSUS
ELBASTA OF CONANGA 9703
#SITZ UPWARD 307R
#BARBARA OF PLATTEMERE 337
#S A V BISMARCK 5682
SPRINGFIELD BLACKCAP 7217



\$M
74
\$W
61

CED	BW	WW	YW	DOC	CLAW	ANGLE	HP	MM	MB	RE
9	1	71	130	8	0.4	0.52	17	18	0.68	0.76

- Following in the footsteps of her famous siblings, Blackcap 1057 blends stunning good looks with mass and performance. Produced by the powerful dam of Empire 7045, Lot 40 is also a maternal sister to Blackcap 0073, the \$30,000 top-selling female of the 2021 sale going to Light Angus of IA, and Blackcap 9108, the top-selling bred heifer of the 2020 sale to ZWT Ranch.
- Blackcap 1057 earned IMF and RE ratios of 111 and 112, respectively, and has a place in the top 10% of the breed for HP; the top 15% for YW and Claw; and the top 20% for \$M and WW. Her dam shows a progeny record of BR 3@100; WR 3@111; YR 3@108; IMF 24@115 and RE 24@ 101.
- Due to calve 2/19/23 with a bull pregnancy sired by Mill Brae Benchmark 9016 (Reference Sire B).

MONTANA *Blackcap*1065

+321 \$C



MONTANA EMPIRE 7045 • Maternal brother to Lots 40 and 41A-B



MONTANA BLACKCAP 1065

BO: 2/9/2021

REG #: 20193414

TATTOO: 1065

CONNEALY JUDGMENT
#KG JUSTIFIED 3023
17873653
KG MISS MAGIC 1443

#PLATTEMERE WEIGH UP K360
DEER VALLEY BLACKCAP 4153
17873653
DEER VALLEY BLACKCAP 1122

#CONNEALY CONSENSUS 7229
#ENTRINE OF CONANGA 9876

#SITZ WISDOM 481T
KG MISS MAGIC 3528

#SITZ UPWARD 307R
#BARBARA OF PLATTEMERE 337
#S A V BISMARCK 5682
SPRINGFIELD BLACKCAP 7217



\$M
91
\$W
87

CED	BW	WW	YW	DOC	CLAW	ANGLE	HP	MM	MB	RE
11	-0.1	82	143	22	0.47	0.49	17	31	1.45	0.54

- With an individual IMF scan ratio of 224 and RE 104, Blackcap 1065 occupies rare territory with a \$W in the top 1%; a MB and \$M in the top 2%; a WW in the top 5%; a YW and HP in the top 10%.
- Produced from the powerful dam of Empire, Lot 41A is long-spined, smooth-made and attractively patterned.
- Due to calve 2/19/23 with a bull pregnancy sired by Mill Brae Benchmark 9016 (Reference Sire B).

MONTANA *Blackcap*1064

Maternal sister to Empire



MONTANA BLACKCAP 9108 • Maternal sister to Lots 40 and 41A-B



MONTANA BLACKCAP 1064

BD: 2/9/2021

REG #: 20193413

TATTOO: 1064

CONNEALY JUDGMENT

#KG JUSTIFIED 3023

17707279

KG MISS MAGIC 1443

#PLATTEMERE WEIGH UP K360

DEER VALLEY BLACKCAP 4153

17873653

DEER VALLEY BLACKCAP 1122

#CONNEALY CONSENSUS 7229

#ENTRINE OF CONANGA 9876

#SITZ WISDOM 481T

KG MISS MAGIC 3528

#SITZ UPWARD 307R

#BARBARA OF PLATTEMERE 337

#S A V BISMARCK 5682

SPRINGFIELD BLACKCAP 7217



SM

78

SW

72

CED	BW	WW	YW	DOC	CLAW	ANGLE	HP	MM	MB	RE
13	-1.1	70	130	16	0.41	0.47	15.1	27	1.04	0.41

- From the same dam as Blackcap 0073, the \$30,000 top-selling female of the 2021 sale going to Light Angus of IA, and Blackcap 9108, the top-selling bred heifer of the 2020 sale to ZWT Ranch.
- Ranks in the top 5% for CED; the top 10% \$W and \$C; the top 15% for YW, Claw, MB, \$M and \$B; the 20% for HP and the top 25% for WW.
- Due to calve 3/12/23 with an unsexed pregnancy sired by Brooking Can Am 0012 (Reference Sire E).

MONTANA *Rita* 1046

Maternal sister to Goodnight



DEER VALLEY RITA 3816 • Dam of Lot 42



MONTANA GOODNIGHT 9036
Maternal brother to Lot 42



MONTANA RITA 1046

BD: 2/6/2021

REG #: 201933398

TATT00: 1046

RITO 707 OF IDEAL 3407 7075
#S A V RENOWN 3439

17633839

S A V BLACKCAP MAY 4136

#PLATTEMERE WEIGH UP K360
DEER VALLEY RITA 3816

17861188

DEER VALLEY RITA 0346

#R R RITO 707
IDEAL 3407 OF 1418 076

#S A V 8180 TRAVELER 004
#S A V MAY 2397

#SITZ UPWARD 307R
#BARBARA OF PLATTEMERE 337

#S A V BISMARCK 5682
G A R OBJECTIVE 2345



SM
48
SW
63

CED	BW	WW	YW	DOC	CLAW	ANGLE	HP	MM	MB	RE
10	0.1	54	98	-2	0.47	0.56	9.6	34	0.11	0.6

- An attractive and balanced-trait Renown daughter produced from Rita 3816, a longtime foundation member of the Montana embryo program whose progeny sales exceed \$150,000, including Goodnight 9036, the \$16,000 3rd high-selling bull in the 2020 sale, and Rita 6001, the \$12,000 high-selling heifer calf of the 2016 NILE Angus Female Sale.

- Due to calve 2/19/23 with a bull pregnancy sired by Square B Atlantis 8060 (Reference Sire C).

MONTANA *Dixie Erica* 0047

Stunning Type and Kind



WERNER DIXIE ERICA 2202
Dam of Lot 43



MONTANA HANCOCK 0050
Full brother to Lot 43



MONTANA DIXIE ERICA 0047

BD: 4/15/2020

REG #: 19856360

TATTOO: 47

RITO 707 OF IDEAL 3407 7075
#S A V RENOWN 3439

17633839

S A V BLACKCAP MAY 4136

#S A V PROSPERITY 9131
WERNER DIXIE ERICA 2202

17324472

GCC DIXIE ERICA 712S

#R R RITO 707
IDEAL 3407 OF 1418 076

#S A V 8180 TRAVELER 004
#S A V MAY 2397

#S A V PROVIDENCE 6922
#S A V EMBLYNETTE 3123

#O C C MISSING LINK 830M
O C C DIXIE ERICA 620N



SM
62
SW
56

CED	BW	WW	YW	DOC	CLAW	ANGLE	HP	MM	MB	RE
5	0.6	53	101	11	0.49	0.48	10.5	28	0.16	0.31

- Blending a phenotype and genotype designed for maternal function and efficiency, this deep-sided and easy-fleshing daughter of the Pathfinder Sire, Renown, was produced from Dixie Erica 2202, the maternal sister to War Party 1472 who served as valued Montana embryo donor before joining the Bruin Ranch program at ten years of age.
- Due to calve 2/19/23 with a bull pregnancy sired by Square B Atlantis 8060 (Reference Sire C).

MONTANA *Justice* 1109



MONTANA JUSTICE 1109 • Reference Sire J



MONTANA JUSTICE 1109

BD: 2/20/2021

REG #: 20193446

TATTOO: 1109

#MOHNEN SUBSTANTIAL 272
SITZ STELLAR 726D
18397542 SITZ PRIDE 200B

#S A V RESOURCE 1441
COLEMAN DONNA 7233
19110861 COLEMAN DONNA 714

#BENFIELD SUBSTANCE 8506
MOHNEN GLYN MAWR ELBA 1758

#CONNEALY FINAL PRODUCT
#SITZ PRIDE 308Y

RITO 707 OF IDEAL 3407 7075
S A V BLACKCAP MAY 4136

#CONNEALY ONWARD
COLEMAN DONNA 386



CED	BW	WW	YW	RADG	DMI	SC	\$M
9	-0.1	74	126	0.2	2.16	1.65	85
DOC	CLAW	ANGLE	HP	MM	MB	RE	\$W
25	0.11	0.43	16.8	16	0.24	0.64	63
							197

- Selected for use in the Montana Ranch program, Justice 1109 has been a performance standout since birth balancing an adj. WW of 816 lbs with rankings of the top 1% for Claw; the top 5% for \$M; the top 10% for HP; the top 15% for WW and the top 25% for YW. Justice will sell as a highlighted herd sire in the upcoming bull sale.



MONTANA DIXIE ERICA 1105 • Lot 44



MONTANA DIXIE ERICA 0102 – Maternal sister to Lot 44



MONTANA DIXIE ERICA 0103
Maternal sister to Lot 44



MONTANA DIXIE ERICA 1105

BD: 3/4/2021

REG #: 20193443

TATTOO: 1105

#S A V 8180 TRAVELER 004
#S A V 004 DENSITY 4336
14725035 S A V MAY 7238

#O C C MISSING LINK 830M
GCC DIXIE ERICA 658W
16482385 O C C DIXIE ERICA 620N

#SITZ TRAVELER 8180
BOYD FOREVER LADY 8003

#LEACHMAN RIGHT TIME
#S A R PROSPECTOR MAY 9124

O C C HEADLINER 661H
O C C DIXIE ERICA 946K

RITO 9Q4 OF 1H1 SASQUATCH
O C C DIXIE ERICA 816B



\$M
44
\$W
49

CED	BW	WW	YW	DOC	CLAW	ANGLE	HP	MM	MB	RE
10	0.8	45	78	0	0.5	0.48	7.8	28	0	0.56

- Few dams are as prepotent for type as Dixie Erica 658W, the dam of Lot 44. A full sister to the dam of War Party 1472, 658W is easy-fleshing with unmatched depth of body and exceptional femininity. Her progeny includes the \$13,000 Dixie Erica 0102 selected by Coleman Angus in the 2021 sale, where her full sister Dixie Erica 0103 sold for \$9,000 to Shady Brook Angus; Dixie Erica 9152, an elite selection of ZWT Ranch; and Capitalist 0096, working at 3C Cattle Co.

- Due to calve 2/19/23 with a heifer pregnancy sired by Montana Justice 1109 (Reference Sire J).



MONTANA DONNA 0220

BD: 6/30/2020

REG #: 19856392

TATTOO: 220

RITO 707 OF IDEAL 3407 7075

#S A V RENOWN 3439

17633839

S A V BLACKCAP MAY 4136

#R R RITO 707

COLEMAN DONNA 975

16359677

COLEMAN DONNA 386

#R R RITO 707
IDEAL 3407 OF 1418 076

#S A V 8180 TRAVELER 004
#S A V MAY 2397

RITO N BAR
ERISKAY OF ROLLIN ROCK 3

#BASIN RAINMAKER 654X
KMK DONNA J311



\$M
54
\$W
48

CED	BW	WW	YW	DOC	CLAW	ANGLE	HP	MM	MB	RE
3	1.1	56	101	24	0.29	0.41	9.9	18	0.1	1.01

- A line-bred Rito bred heifer produced from Donna 975, a maternal sister to Donna 714 sired by Rito 707. Lot 45's dam has a progeny record of BR 3@97; WR 3@104 and YR 3@104 with daughters selling through past Montana Ranch sales to Brown Angus Ranch in ND; Ingram Angus in TN; and Pitts Angus in MO.
- Due to calve 2/17/23 with a heifer pregnancy sired by Mill Brae Benchmark 9016 (Reference Sire B).



COLEMAN DONNA 975 • Dam of Lot 45



MONTANA DONNA 0220 • Lot 45



MONTANA JOY 0040

BD: 4/5/2020

REG #: 19856117

TATTOO: 40

#O C C JUNEAU 807J

#KOU PAL JUNEAU 797

15804077

KOUPALS ELBA 187

#BASIN PAYWEIGHT 107S

BASIN JOY 1036

16935098

BASIN JOY 566T

#O C C EMBLAZON 854E
O C C DIXIE ERICA 903E

#O C C GLORY 950G
BEEFLAND ELBA 7119

#VERMILION PAYWEIGHT J847
BASIN LUCY 3829

#B P F SPECIAL FOCUS 504
BASIN JOY 204R



\$M
70
\$W
67

CED	BW	WW	YW	DOC	CLAW	ANGLE	HP	MM	MB	RE
3	1.6	68	117	10	0.45	0.36	16.2	30	0.1	0.65

- From the mating of the deceased maternal performance sire, Juneau 797, to the dam of the popular balanced-trait sire, Rainmaker 4404, Lot 46 is a full sister to Montana Herald 0039, the \$15,000 2nd high-selling bull of the 2021 sale selected by Fortune's Triangle S of SD. Her dam, Joy 1036, has a progeny record of BR 4@92; WR 4@104; and YR 2@102.
- Due to calve 2/9/23 with a bull pregnancy sired by Square B Atlantis 8060 (Reference Sire C).



BASIN JOY 1036

Dam of Lot 46



MONTANA JOY 0040 • Lot 46



BASIN RAINMAKER 4404

Maternal brother to Lot 46



MONTANA RITA 1073

BD: 2/27/2021

REG #: 20193421

TATTOO: 1073

#S A V RENOWN 3439

MONTANA EMPIRE 7045

18843937

DEER VALLEY BLACKCAP 4153

RITO 707 OF IDEAL 3407 7075

S A V BLACKCAP MAY 4136

#PLATTEMERE WEIGH UP K360

DEER VALLEY BLACKCAP 1122

#BASIN PAYWEIGHT 006S

21AR O LASS 7017

#TC TOTAL 410

RITA 3110 OF RITA 148 616



\$M
77
\$W
70

#BASIN PAYWEIGHT 1682

#MONTANA RITA 6097

18553792

RITA 8H17 OF RITA 3110 TOTAL

CED	BW	WW	YW	DOC	CLAW	ANGLE	HP	MM	MB	RE
3	1.6	75	133	21	0.58	0.54	13.7	22	0.48	0.44

- Sound and square on every corner, Lot 47 is a gorgeous female produced by Rita 6097, a second-generation donor in the program who achieved Pathfinder status and sold as a feature 2021 sale to Bonner Farms in AL. Her dam has an impressive progeny scan record of IMF 9@113 and RE 9@101.
- Due to calve 3/14/23 with an unsexed pregnancy sired by Brooking Can Am 0012 (Reference Sire E).



MONTANA RITA 6097 • Dam of Lot 47



MONTANA RITA 1073 • Lot 47



MONTANA LUCY 1103

BD: 3/3/2021

REG #: 20196668

TATTOO: 1103

POSS EASY IMPACT 0119

BALDRIDGE ALTERNATIVE E125

18837398

BALDRIDGE BLACKBIRD A030

#POSS TOTAL IMPACT 745

POSS ELMARETTA 736

#HOOVER DAM

BALDRIDGE BLACKBIRD X89

#EXAR UPSHOT 0562B

EXAR ROYAL LASS 1067

#CONNEALY CONSENSUS 7229

BASIN LUCY 3829



\$M
48
\$W
57

#EXAR DENVER 2002B

TMR LUCY 1B52

17903123

BASIN LUCY 1088

CED	BW	WW	YW	DOC	CLAW	ANGLE	HP	MM	MB	RE
113	11.3	164	1116	12	10.53	10.54	110.1	123	1.02	0.73

- Soft-sided and big-hipped, Lucy 1103 was produced from one of the strongest Denver daughters in existence. Her dam is deep-ribbed, expressively-muscled with loads of look to go with her big-time progeny scan record of IMF 13@115 and RE 13@100. Lot 48 posted an impressive IMF ratio of 151 and a RE ratio of 111.
- Due to calve 3/12/23 with a bull pregnancy sired by Brooking Can Am 0012 (Reference Sire E).



MONTANA JACKPOT 1100 • Full brother to Lot 48



MONTANA LUCY 1103 • Lot 48

KOUPALS B&B Pathfinder 8106



MONTANA HONCHO 0223
Son of Pathfinder



MONTANA DONNA 1243
Daughter of Pathfinder



MONTANA BLACKCAP MAY 0021
Daughter of Pathfinder



LT CHIEFTON 1440
Son of Pathfinder



KOUPALS B&B PATHFINDER 8106

BD: 1/19/2018

REG #: 19274968

TATTOO: 8106

#CONNEALY CAPITALIST 028
LT ENTERPRISE 5213
18316913
LT ERICA 0121

#KROUPALS B&B IDENTITY
#B&B BLKBD PROGRESS 3015
17722436
#B&B BLKBD PROGRESS 0049

#S A V FINAL ANSWER 0035
PRIDES PITA OF CONANGA 8821

#KMK ALLIANCE 6595 187
LT ERICA OF BANDO 3016

#SITZ UPWARD 307R
#B&B ERICA 605

KOUPALS B&B MARATHON 8031
#B&B BLKBD PROGRESS 4051

CED	BW	WW	YW	RADG	DMI	SC	SM
9	-1.3	67	125	0.28	1.51	0.21	87
DOC	CLAW	ANGLE	HP	MM	MB	RE	\$W
7	0.45	0.36	173	30	0.68	0.69	71
							SC
							269

AMF NHF CAF OSF DDF MIF OHF RDF D2F

• Montana Ranch Featured Herd Sire

- Stacking five consecutive generations of Pathfinder Dams, noted for their productivity, fertility, unparalleled structure and udder quality, Pathfinder is a unique low BW, high-growth sire that has found widespread popularity as a sire in heifer projects from coast to coast.
- Pathfinder progeny show ratios of BW 378@97; WW 338@101; YW 194@102; IMF 178@101 and RE 187@101. Sons of Pathfinder include LT Chiefton 1440, the \$95,000 top-selling bull in the 2022 LT sale; Koupals B&B Trailboss 1048, the \$50,000 top-seller at the 2022 Koupal sale; and Montana Honcho 0223, the top-selling bull of the 2021 Montana sale. The first Pathfinder daughter to sell at auction was Montana Blackcap May 0021, the \$21,000 2nd high-selling bred heifer in the 2021 Montana sale going to Faith Farms of TN.







1463 HWY 83
BIGFORK, MT 59911

MontanaRanchAngus.com

TIME SENSITIVE MATERIAL
PLEASE DELIVER IMMEDIATELY



Montana MATERNAL