

A ID	B OD	C THK.	D HEIGHT
610	762	76	305
610	762	76	457
610	762	76	610
610	762	76	914
610	762	76	1219

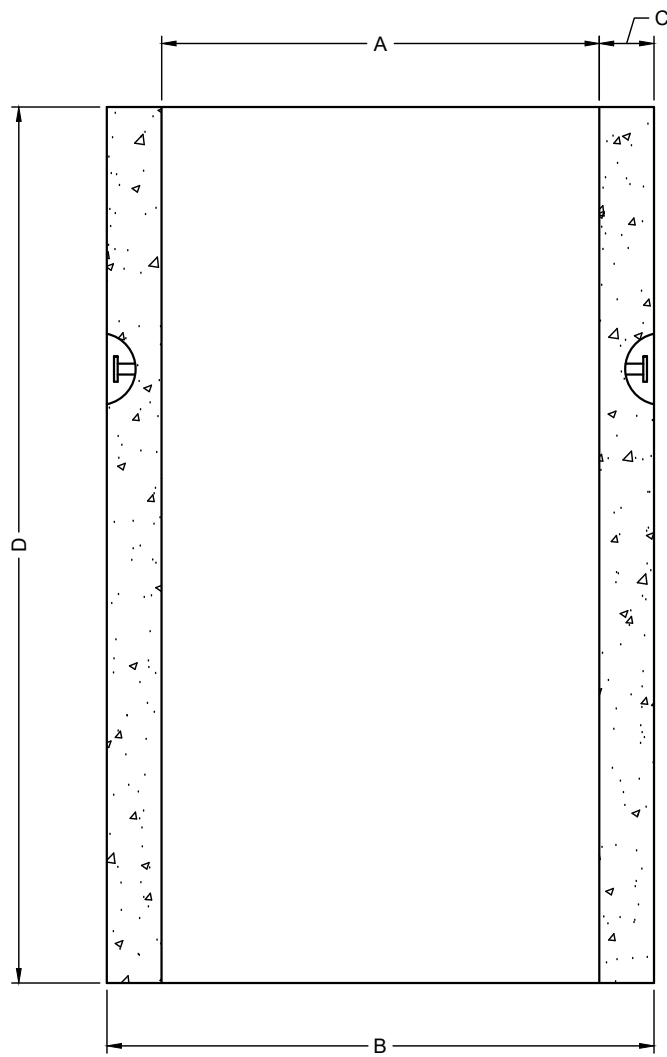
AVAILABLE HEIGHTS	QTY. OF RUNGS	STARCON LIFTING PINS	WEIGHTS [kg]
0.31m [1']	0	4T	115
0.46m [1.5']	0	4T	173
0.61m [2']	0	4T	230
0.91m [3']	0	4T	345
1.22m [4']	0	4T	461

CONCRETE	RELEASE	MPa	20
	28 DAY:	MPa	35
	AIR CONTENT:	6% ± 1%	
	WEIGHT:	kg	VOLUME
STRAND	TYPE:	kg/m ³ 2402	
		mm	
		MPa	

MARK	DESCRIPTION	QTY.



ISOMETRIC VIEW
NTS



ELEVATION VIEW



NOTES:

- 1) CEMENT : PORTLAND CEMENT TYPE 50(HS)
- 2) Max AGGREGATE SIZE: 20mm
- 3) 28 DAY STRENGTH: MIN. 35 MPa.
- 4) ENTRAINED AIR: 6%±1%
- 5) REINFORCING TO CAN/CSA-G30.18 400 MPa
- 6) ALL UNITS ARE IN MILLIMETERS UNLESS OTHERWISE NOTED.

DWG. NO.	REFERENCE	NO.:	REVISION DESCRIPTION	BY	APP'D	DATE	DRW BY	SWM	2018/11/20
-	-	A	ISSUED PLAN	-	-	2018/11/20	CH'K BY	-	-
-	-	-	-	-	-	-	AP'D BY	-	-
-	-	-	-	-	-	-	AP'D BY	-	-
-	-	-	-	-	-	-	AP'D BY	-	-
-	-	-	-	-	-	-	SCALE: NTS	PAGE: 1 OF 1	

TITLE:		600 RISER DETAIL DRAWING	
PROJECT NO.:		JOB NO.:	
DRAWING NO.:	SVI-MR-600-01A		