

Rabbit Anti-IL-10 Recombinant [IL10/2651R]: RM0408

Intended Use: For Research Use Only

Description: Interleukin-10(IL-10), also known as human cytokine synthesis inhibitory factor(CSIF), is an anti-inflammatory cytokine. In humans IL-10 is encoded by the IL-10 gene. It is capable of inhibiting synthesis of pro-inflammatory cytokines like IFN-gamma, IL-2, IL-3, TNF alpha and GM-CSF made by cells such as macrophages and regulatory T-cells. IL-10 also displays potent abilities to suppress the antigen presentation capacity of antigen presenting cells. Studies show that the mouse IL 10 gene contains 5 exons and spans about 5.2 kb of genomic DNA. Inhibits the synthesis of cytokines, including IFN-gamma, IL-2, IL-3, TNF and GM-CSF produced by activated macrophages and by helper T-cells.

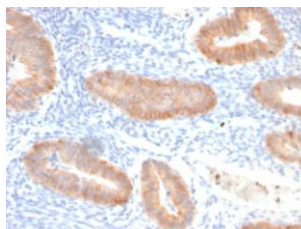
Specifications:

Clone: IL10/2651R
 Source: Rabbit
 Isotype: IgG
 Reactivity: Human
 Immunogen: Recombinant full-length human Interleukin 10 (IL-10) protein
 Localization: Secreted
 Formulation: Antibody in PBS buffer pH7.4, containing BSA and ≤ 0.09% sodium azide (NaN3)
 Storage: Store at 2°- 8°C
 Applications: IHC
 Package:

Description	Catalog No.	Size
IL-10 Concentrated	RM0408	1 ml

IHC Procedure*:

Positive Control Tissue: Intestine
 Concentrated Dilution: 50-200
 Pretreatment: Tris EDTA pH9.0, 15 minutes using Pressure Cooker, or 30-60 minutes using water bath at 95°-99°C
 Incubation Time and Temp: 30-60 minutes @ RT
 Detection: Refer to the detection system manual
 * Result should be confirmed by an established diagnostic procedure.



FFPE human endo-cervical carcinoma stained with anti-IL-10 Recombinant using DAB

References:

1. Evaluation of the probiotic properties of new Lactobacillus and Bifidobacterium strains and their in vitro effect. Presti I, et al. Appl Microbiol Biotechnol. Jul;99(13):5613-26, 2015.
2. Protective Roles Of Quercetin In Acute Myocardial Ischemia And Reperfusion Injury In Rats. Jin Hb, et al. Mol Biol Rep. Dec;39(12):11005-9, 2012.
3. Increased Il-10 Mrna Expression In Tumor-Associated Macrophage Correlated With Late Stage Of Lung Cancer. Wang R, et al. J Exp Clin Cancer Res. May 20;30:62, 2011.

Doc. 100-RM0408
Rev. A