

Weekly Major Equity Indexes Charts Newsletter

January 16, 2018

The Weekly Equity Indexes Charts Newsletter provides Cornelius Luca's trade ideas, model signals, and absolute charts

© 2018 Luca Global Markets, LLC. All rights reserved. This content is provided as general information only and does not constitute investment advice or a representation that any investment, security or other product is suitable for any person. This content reflects the opinions only of the author and cannot be interpreted as advice.

This content is the intellectual property of Cornelius Luca. Any copying, distribution or redistribution of this content is expressly prohibited without the prior written consent of Cornelius Luca.

Cornelius Luca shall not be liable for any errors in the content, or for any actions taken in reliance thereon.

Trade Ideas

- G7: Long the S&P 500 *while above* the 5-day exponential moving average
- G7: Long FTSE *ONLY while above* the 5-day exponential moving average
- BRIC: Long India's BSE Sensex *while above* the 5-day exponential moving average
- Middle East: Long Saudi's Tadawul تداول *while above* the 5-day exponential moving average

G7 Equity Indexes

Model Signals - Daily & Weekly

<i>G7 Index</i>	<i>Daily Model</i>	since	Daily Bias (> or < 21-day EMA)	Daily Risk	<i>Weekly Model</i>	since	Weekly Bias (> or < 21-week EMA)	Weekly Risk
S&P 500	L	2-Jan	bullish	bullish	L	24-Nov	bullish	bullish
Germany DAX	L	16-Jan	slightly bullish	slightly bullish	L	5-Jan	bullish	slightly bullish
UK FTSE	S	15-Jan	bullish	slightly bearish	L	4-Dec	bullish	slightly bullish
France CAC	L	11-Jan	slightly bullish	slightly bullish	L	5-Jan	bullish	slightly bullish
Italy Borsa Italiana	L	3-Jan	bullish	slightly bullish	L	5-Jan	bullish	slightly bullish

Source: Proprietary Luca Global Markets, LLC Model

S&P 500

Comment:

Long the S&P 500 while above the 5-day EMA

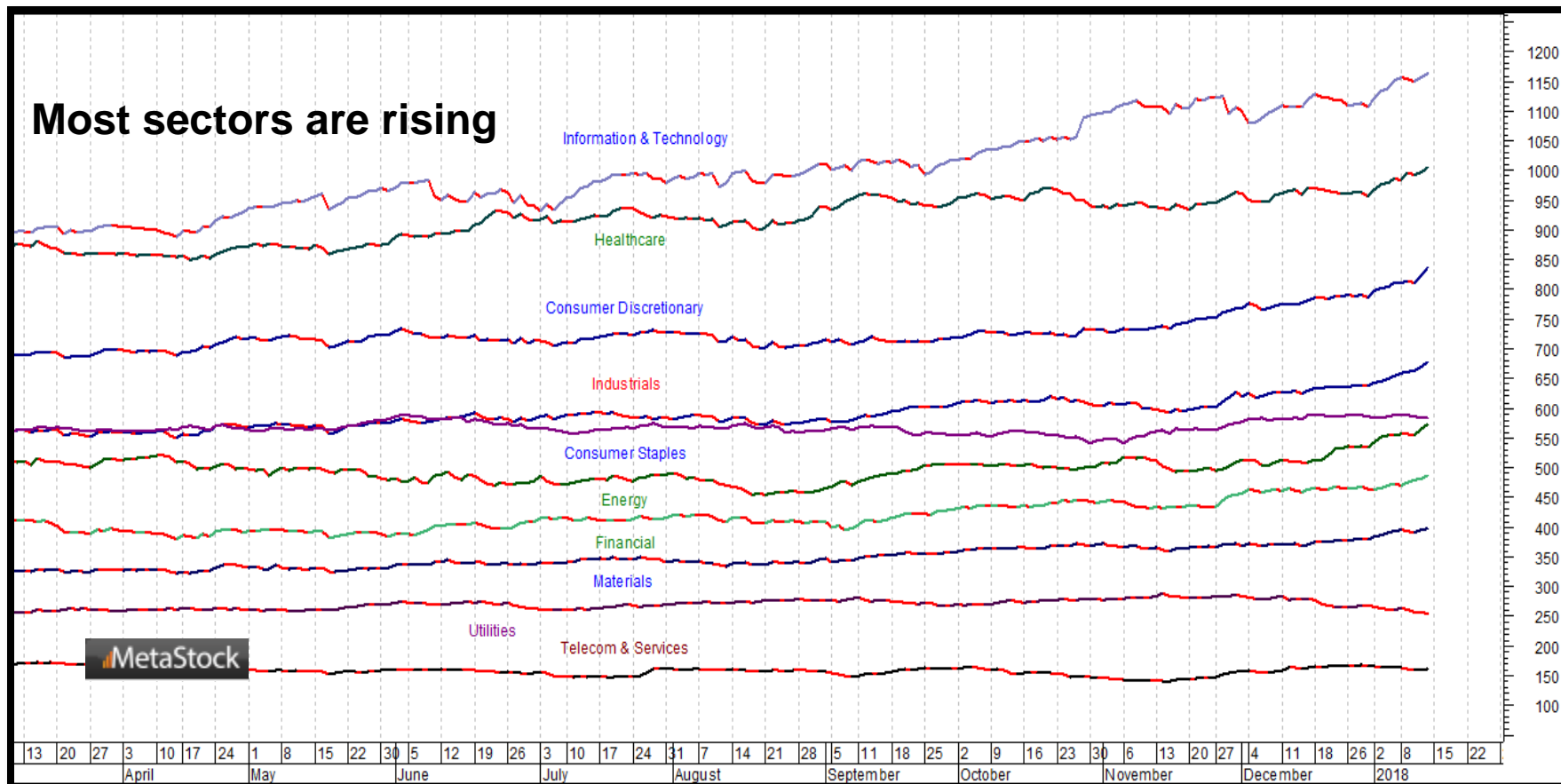
- Don't mess with a good thing! The S&P 500 remains very strong at new record highs
- It trades above both its 5- & 21-day EMAs
- Only a clear break below the 5-day EMA would signal profit taking toward the 21-day EMA
- Initial resistance: 2,808
- Further resistance: 2,840 & 2,863
- Immediate support: 2,773
- Further support: 2,714, 2,657 & 2,605
- Fast stochastics: bullish
- MACD: bullish



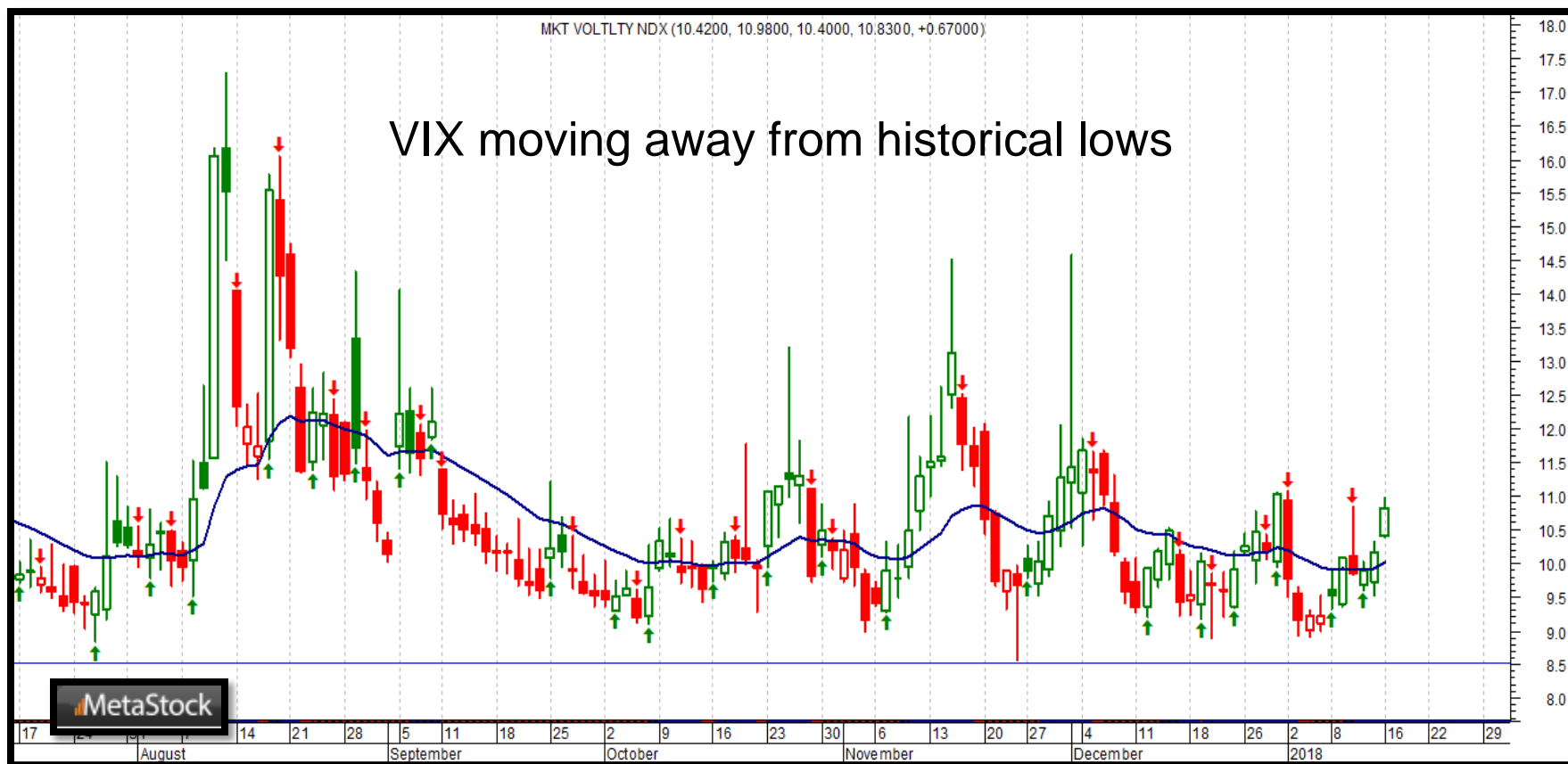
CQG Inc. © 2018 All rights reserved worldwide. <http://www.cqg.com>

Tue Jan 16 2018 10:52:34, CQG 17.12.860

S&P 500 Sectors



S&P 500 - VIX

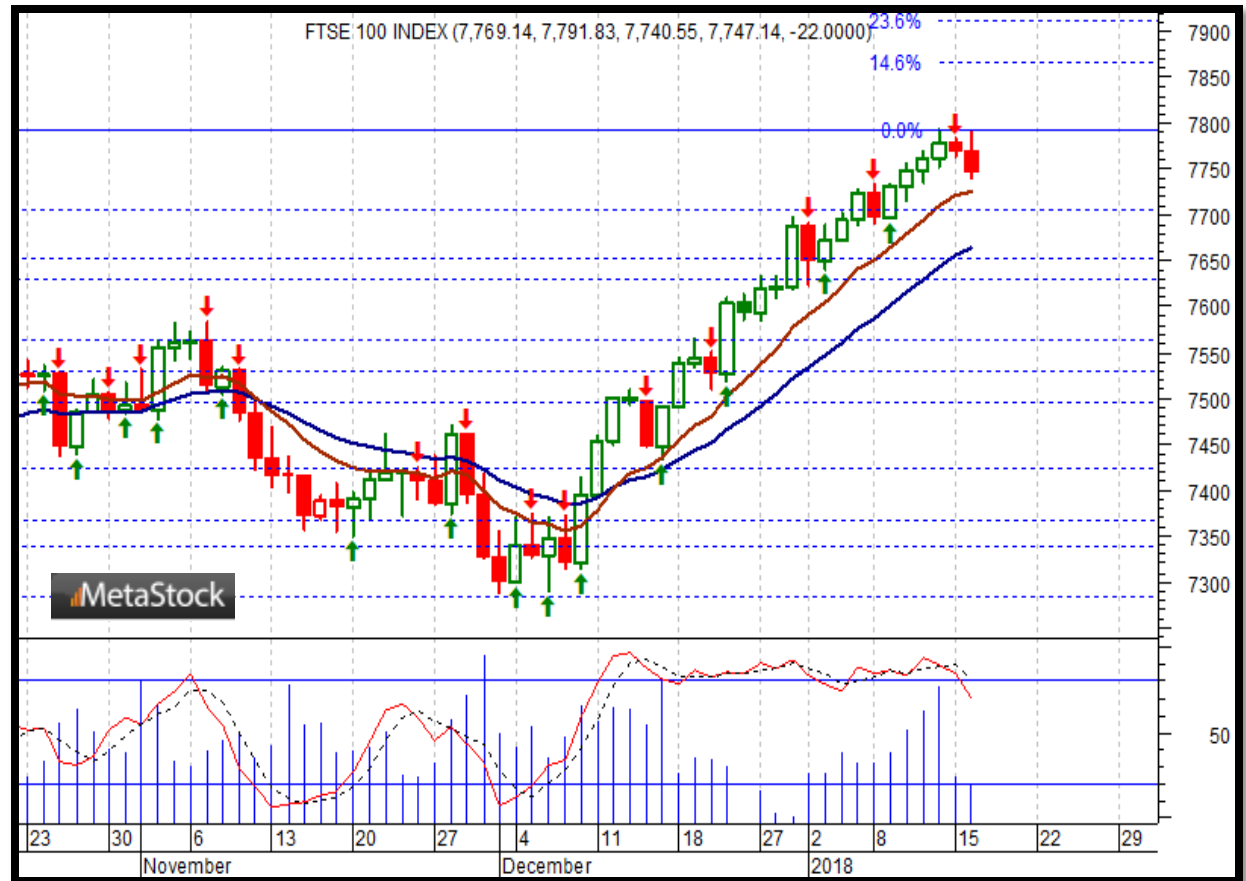


G7 Equity Index Trade Idea

Comment:

Long FTSE ONLY while above the 10-day EMA

- The FTSE peaked at a record high on 1/12 and since then it's seen some profit taking
- Only a break below the 10-day EMA would signal profit taking toward the 21-day EMA
- Initial resistance: 7,763
- Further resistance: 7,864 & 7,913
- Immediate support: 7,725
- Further support: 7,663 & 7,563
- Fast stochastics: slightly bearish



BRIC Equity Indexes

Model Signals - Daily & Weekly

<i>BRIC Index</i>	<i>Daily Model</i>	since	Daily Bias (> or < 21-day EMA)	Daily Risk	<i>Weekly Model</i>	since	Weekly Bias (> or < 21-week EMA)	Weekly Risk
Brazil	L	11-Jan	bullish	bullish	L	18-Dec	bullish	bullish
Russia	S	16-Jan	bullish	slightly bearish	L	29-Dec	bullish	bullish
India	L	4-Jan	bullish	bullish	L	8-Dec	bullish	bullish
China-Shanghai	L	28-Dec	bullish	bullish	L	5-Jan	bullish	bullish

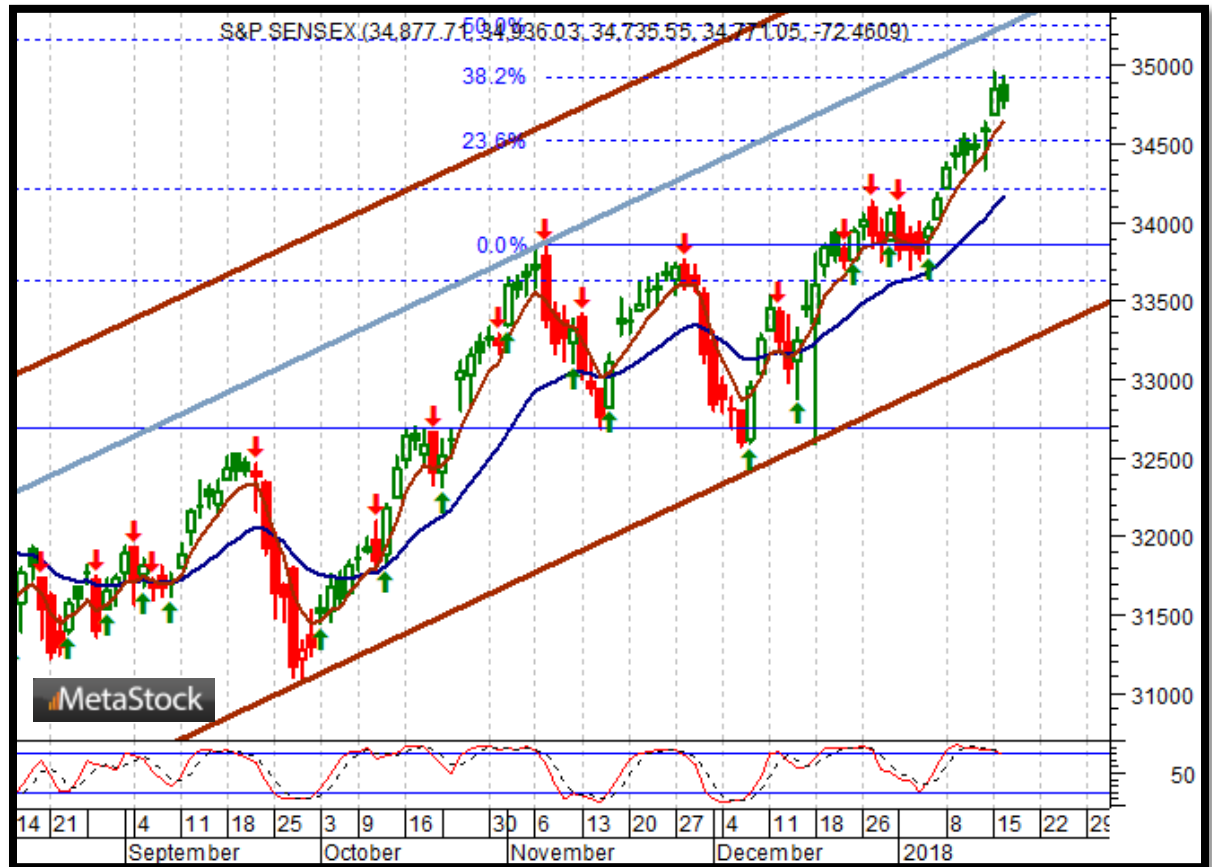
Source: Proprietary Luca Global Markets, LLC Model

BRIC Equity Index Trade Idea

Comment:

Long India's BSE Sensex while above the 5-day EMA

- The Sensex extended its gains to a record high on 1/15
- Only a break below the 5-day EMA would signal profit taking sales toward the 21-day EMA
- Initial resistance: 34,964
- Further resistance: 35,271
- Immediate support: 34,638
- Further support: 34,138 & 32,686
- Fast stochastics: bullish



Middle East Equity Indexes Model Signals - Daily & Weekly

<i>Middle East Index</i>	<i>Daily Model</i>	since	Daily Bias (> or < 21-day EMA)	Daily Risk	<i>Weekly Model</i>	since	Weekly Bias (> or < 21-week EMA)	Weekly Risk
Saudi Arabia	L	9-Jan	bullish	bullish	L	27-Nov	bullish	bullish
Abu Dhabi	L	15-Jan	bullish	bullish	L	4-Dec	bullish	bullish

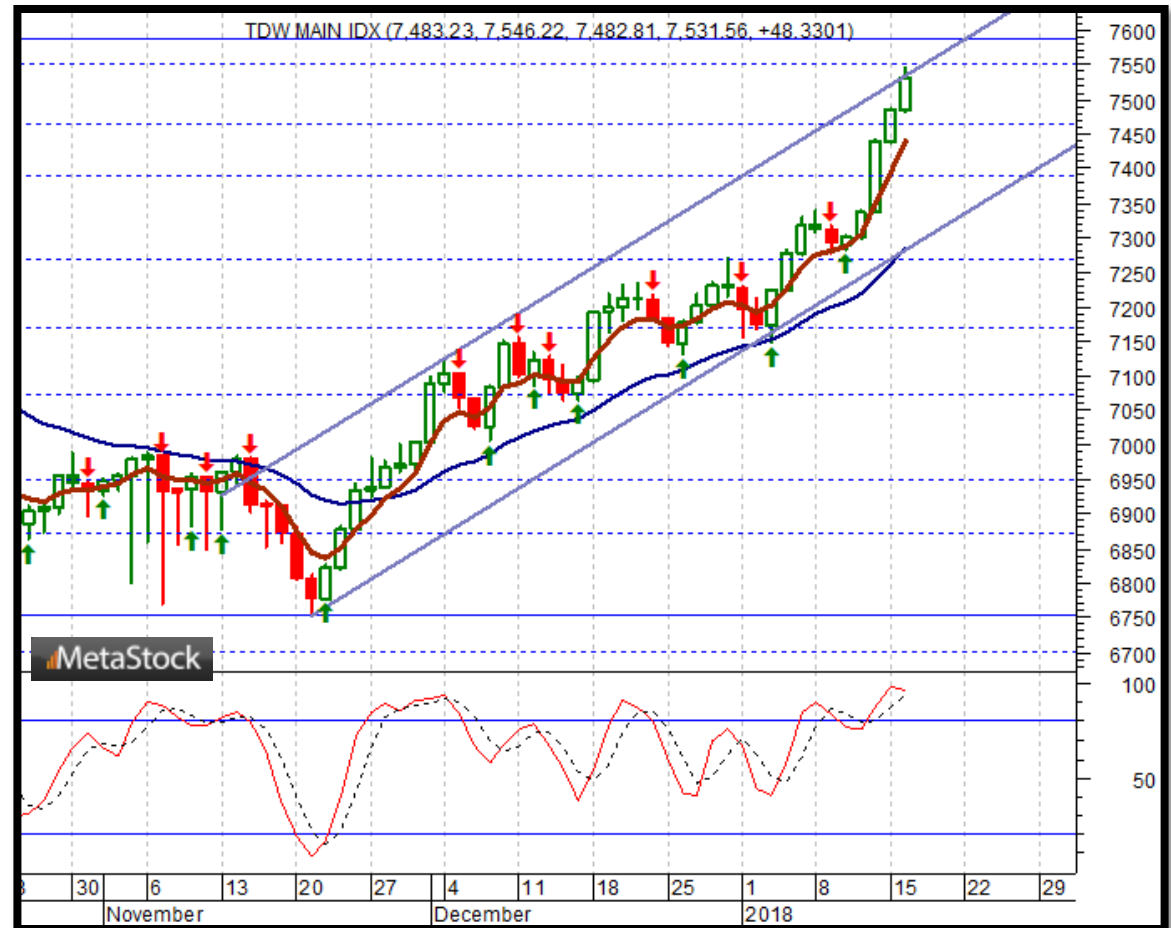
Source: Proprietary Luca Global Markets, LLC Model

Middle East Equity Index Trade Idea

Comment:

Long Saudi's Tadawul تداول while above the 5-day EMA

- The Tadawul extended its sharp gains to a 6 ½ -month high
- It trades above both its 5- & 21-day EMAs & it's overbought
- Only a break below the 5-day EMA would signal a pull back toward the 21-day EMA
- Initial resistance: 7,586
- Further resistance: 7,867 & 8,240
- Immediate support: 7,438
- Further support: 7,283 & 7,064
- Fast stochastics: bullish



How to Use the Heat Map

Bias: If the Candle > 21-period EMA = bullish
 If the Candle < 21-period EMA = bearish
 If the Candle around 21-period EMA = sideways

Long or Short

Since when

Risk: Bullish or Bearish
 Candle as of Monday am EST

	Commodities	Daily Model	since	Daily Bias (> or < 21-day EMA)	Daily Risk	Weekly Model	since	Weekly Bias (> or < 21-day EMA)	Weekly Risk
Energy	Crude (CLc1)	S	27-Apr	bullish	slightly bullish	L	23-Mar	slightly bearish	slightly bullish
	Brent (LCOc1)	L	21-Apr	slightly bullish	slightly bullish	L	6-Apr	slightly bearish	slightly bullish
	Natural gas (NGc1)	S	23-Apr	bearish	bearish	S	20-Apr	bearish	slightly bearish
	Palm oil (FCPOc1)	L	24-Apr	sideways	neutral	S	20-Apr	slightly bearish	slightly bearish
Metals	Gold (GCc1)	S	24-Apr	bearish	bearish	S	20-Mar	slightly bearish	slightly bearish
	Silver (SIc1)	S	22-Apr	bearish	bearish	S	24-Apr	bearish	bearish
	Platinum (PLc1)	S	20-Apr	bearish	bearish	S	20-Mar	bearish	slightly bullish
	Copper (HGc1)	L	24-Apr	slightly bearish	slightly bullish	S	24-Apr	slightly bearish	slightly bearish
Softs	Coffee (KCN5)	L	24-Apr	sideways	neutral	L	24-Apr	slightly bullish	slightly bullish
	Cocoa (LCCN5)	L	23-Apr	bullish	bullish	L	13-Apr	bullish	bullish
	Soy meal (SMN5)	S	24-Apr	bearish	slightly bearish	S	24-Apr	bearish	slightly bearish
	Wheat (WN5)	S	24-Apr	bearish	slightly bearish	S	24-Apr	bearish	bearish
	Corn (CN5)	S	20-Apr	bearish	bearish	S	6-Apr	bearish	bearish

Source: Proprietary Luca Global Markets, LLC Model

L = long
 S = short