

CABINET BASE

- Cabinet base raise your cabinet/box combination 12" off of the floor or workbench
- Adapts to large box size cabinets
- Weight: 13 lbs.
- Height: 15.125"
- Depth: 16"
- Width: 20.375"



58⁷⁰

Model No. CA980
MFG No. 304-95

DURHAM MFG
Est. 1922

CABINET BASE

- Cabinet base raise your cabinet/box combination 12" off of the floor or workbench
- Adapts to small box size cabinets
- Weight: 12 lbs.
- Height: 15.125"
- Depth: 12.125"
- Width: 15.5"



59⁹⁰

Model No. CA983
MFG No. 315-95

DURHAM MFG
Est. 1922

UTILITY CABINET AEROSOL CAN CADDY

- Holds up to 6 standard sized aerosol cans
- Unit can be wall mounted
- Fastened to a tool box, placed on shelves or counter tops
- 21-1/2" W x 3-1/8" D x 5-1/4" H
- Weight: 3 lbs.
- Color: Grey

18³⁰



Model No. CB638
MFG No. 385-95

DURHAM MFG
Est. 1922

Cans not included

LITERATURE STORAGE RACKS

- Construction is of sturdy heavy gauge steel
- Provide a convenient and compact way to store literature
- Most models accommodate 150 standard 8-1/2" x 11" sheets, while others are wider to hold magazines and special forms



OA148

DURHAM MFG
Est. 1922

Model No.	MFG No.	No. of Compartments	O.A. Dimensions W" x D" x H"	PROMO PRICE
GREY				
OA169	403-95	5	9-3/4 x 4-1/8 x 21	66.80
OA163*	406-95	10	13-1/8 x 2 x 26-1/4	68.80
OA161	402-95	11	9-3/4 x 4-1/8 x 36	93.00
OA148*	405-95	11	13-1/4 x 4-1/8 x 36	112.00
BLACK				
OC539	402-08	5	9-3/4 x 4-1/8 x 21	66.80
OA609*	406-08	10	13-1/8 x 2 x 26-1/4	68.80
OC537	402-08	11	9-3/4 x 4-1/8 x 36	93.00
OA125*	405-08	11	13-1/4 x 4-1/8 x 36	112.00

*12" paper width

HEAVY-DUTY TWO-SIDED MOBILE WORK STATION

- Two rigid and two swivel casters with locking brakes
- Sturdy tubular handle allows ease of mobility
- Rubber tray mat provides safe, secure, non-skid work surface
- Finished in rust and acid resistant grey powder coat
- Heavy-duty casters, capacity of 1200 lbs.
- Colour: Grey
- O.A. dim.: 34" W x 24" D x 34" H
- Front side consists of a 12 opening bins and a 6-drawer cabinet
- Back side consists of a 4-compartment lockable utility cabinet and a 6-drawer cabinet
- Front Bin Size: 8" W x 11-7/8" D x 6-5/8" H
- Back Bin Size: 10" W x 11-7/8" D x 6-3/4" H
- Front Drawer Size: 5-3/8" W x 11-1/4" D x 2-3/4" H
- Back Drawer Size: 5-3/8" W x 11-1/4" D x 2-3/4" H



Model No. MO070
MFG No. MO070-KIT

DURHAM MFG
Est. 1922

980⁰⁰

WALL-MOUNTING CABINET

- 18-gauge, all-welded steel construction
- Features 2 adjustable shelves that adjust on 2" increments
 - Locking system with keys included
 - Ships fully assembled
- 29-7/8" W x 13-11/16" D x 27" H
 - Colour: Grey
 - Shelf Capacity: 150 lbs.
- Includes mounting hardware

DURHAM MFG
Est. 1922



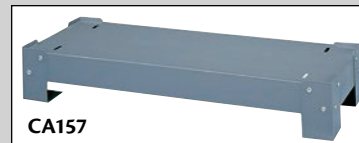
374⁰⁰

Model No. FL992
MFG No. 071SD-95

STEEL STORAGE BINS CABINETS

- Fully welded, will not warp, twist or sag
- Each divider is hemmed in a tear drop design to avoid sharp edges
- Finished in grey powder coat

CA136



CA157

CA151



DURHAM MFG
Est. 1922

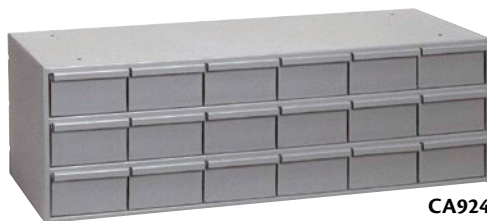
Model No.	MFG No.	No. of Bins	O.A. Dimensions W" x D" x H"	Bin Dimensions W" x D" x H"	PROMO PRICE
CA136	356-95	24	33-3/4 x 12 x 23-7/8	5-3/8 x 11-7/8 x 5-1/2	187.00
CA149	359-95	40	33-3/4 x 12 x 23-7/8	4 x 11-7/8 x 4-1/2	205.00
CA151	360-95	42	33-3/4 x 12 x 42	5-3/8 x 11-7/8 x 5-1/2	296.00
CA154	363-95	72	33-3/4 x 12 x 42	4 x 11-7/8 x 4 1/2	319.00
BASE ONLY					
CA157	364-95	-	33-3/4 x 12-1/4 x 5-3/4	- - -	66.90



FI358

INDUSTRIAL DRAWER CABINETS

- A full width handle for easy opening
- A positive stop that prevents the drawer from being accidentally pulled out
 - Drawers have two runners for smooth, easy travel
 - Colour: Grey
 - Material: Steel
- CA942, CA924, CA930 Drawer: 5-3/8" W x 11-1/4" D x 2-3/4" H
 - CA932, CA935 Drawer: 5-3/8" W x 17" D x 3-1/2" H
 - CA934, FI358 Drawer: 5-3/8" W x 11-1/4" D x 3-1/2" H
 - CA941 Drawer: 5-3/4" W x 11-1/8" D x 2-3/4" H



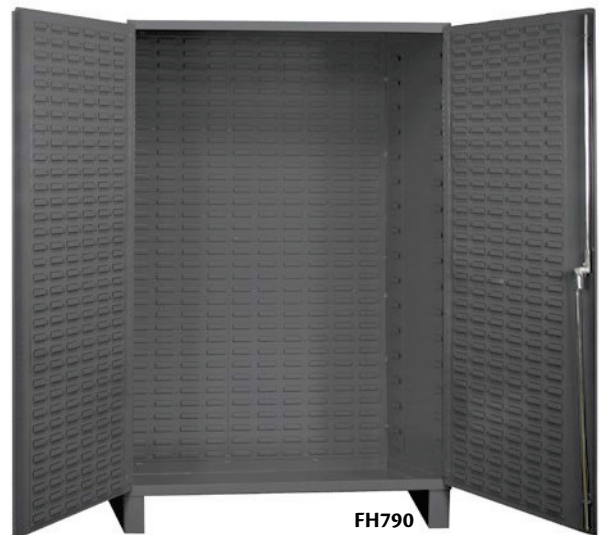
CA924

DURHAM MFG
Est. 1922

Model No.	MFG No.	Dimensions W" x D" x H"	No. of Drawers	PROMO PRICE
CA942	004-95	17-1/4 x 11-5/8 x 10-7/8	9	129.00
CA924	005-95	33-3/4 x 11-5/8 x 10 7/8	18	211.00
CA930	007-95	33-3/4 x 11-5/8 x 14-3/8	24	253.00
CA932	033-95	33-3/4 x 17-1/4 x 17	24	421.00
CA934	034-95	33-3/4 x 11-3/4 x 21-1/8	30	424.00
CA935	035-95	33-3/4 x 17-1/4 x 21-1/8	30	526.00
W/BASE				
CA941	022-95	34-1/8 x 12-1/4 x 62-1/2	96	1279.00
FI358	026-95	34-1/8 x 12-1/4 x 69-1/8	90	1689.00

JUMBO SECURITY STORAGE CABINET

- Louvered panels on doors and back
- Grey textured powder paint
- Material: 14 gauge steel
- Shelf not included



FH790



FG803

DURHAM MFG
Est. 1922

Model No.	MFG No.	Dimensions W" x D" x H"	PROMO PRICE
CABINET			
FH790	JC-482478-BDLP-95	48 x 24 x 78	1899.00
SHELF			
FG803*	FDC-SH-4818-95	47-1/2 x 16-3/8 x -	80.30

* Shelf Capacity: 700 lbs.

Pricing in effect until March 29, 2019 or while quantities last. Taxes & freight extra. Due to current market fluctuations, prices may vary without prior notice.