

PANGBOURNE MAGAZINE

ISSUE 161

MARCH/APRIL 2021





BEN HEATH

— BEAUTIFUL INTERIORS —

Kitchens • Living Rooms

Dining Rooms • Bedrooms • Bathrooms

Curtains and Blinds • Flooring • Fabrics • Lighting

LOCALLY MADE IN NEWBURY

Raceview House, Hambridge Road, Newbury, RG14 5SA

T: 01635 523123 E: sales@benheath.com

CONTENTS

Local News	4
Crossword	11
Church News	12
Local Clubs	21
Pangbourne Primary School	30
Pangbourne College	31
Pangbourne Place-Names	36
Environmental News	40
Council News	46
Useful Numbers	54
Classified Ads	55

THE PANGBOURNE MAGAZINE

Production/Advertising/Finance:
Herald Graphics – 0118 9311488

Submission of articles* and adverts:
pangbourne@heraldgraphics.co.uk
*(*receipt of an article is not a guarantee of inclusion)*

Deadline for inclusion in the
May/June Magazine:

Friday, 9th April 2021

(for distribution at the end of the month)

Distribution: Lucy Bromage – 07747 056193

Whilst every effort is made to ensure the accuracy of information printed in the Pangbourne Magazine, the Editor and publishers cannot accept any responsibility for the consequences of any errors that may occur. The opinions expressed in this magazine are those of the contributors and are not necessarily those of the Editor or of the Committee. Articles in the Pangbourne Magazine, or the information contained in them, may not be used or reproduced by other publications without the express permission of the Magazine Committee. Whilst care is taken to establish that our advertisers are bona fide, readers are advised to take precautions before entering into any agreement.

Front cover picture supplied by:
Joey Power

IF YOU WOULD LIKE TO SUBMIT A PHOTOGRAPH FOR THE PANGBOURNE MAGAZINE
FRONT COVER, PLEASE SEND TO PANGBOURNE@HERALDGRAPHICS.CO.UK FOR CONSIDERATION.
YOUR IMAGE WOULD NEED TO BE HIGH RESOLUTION AND CONTENT SHOULD BE OF LOCAL INTEREST.

FINANCIAL HELP AVAILABLE FOR THOSE IN NEED LOCALLY

The pandemic has put a lot of pressure on everyone recently but particularly those who may struggle to make ends meet even at the best of times. There is a local charity – **The Fanny Maria Kemp Welfare Fund** – that exists just for the residents of Pangbourne and Tidmarsh and the surrounding area. The charity is able to make grants to those in need, focussing mainly on local residents who may be elderly, sick or in distress. For example we can help with:

- Augmenting funding for a boiler repair
- Contributing to a stair lift installation
- Help with heating bills
- Cost of transport for hospital visits

Recently the charity responded to a request from the Patient Participation Group at the Boathouse Surgery. The group were fundraising to purchase a Holter heart monitor and the charity was happy to contribute the full balance of the money needed.

Dr Chris Keast commented that “Now the surgery has its own monitor we have been able to save up to 20 patients each year the inconvenience of having to travel to the Royal Berks, and with the bonus of enabling the doctors to more accurately diagnose irregular heartbeats”.



Holter heart monitor

Do you know anyone who may benefit from this sort of assistance? Maybe a neighbour or a friend who is struggling? If so, please ask them to contact us by e-mail: treasurer.fannymariakemp@gmail.com or by telephone on 0118 9843894.

Whilst there is no guarantee that every nomination will be supported, the Fanny Maria Kemp Welfare Fund trustees meet to award grants twice a year usually in the run up to Christmas and Easter so please encourage individuals to get in touch. The funds are there waiting to bring a little bit of happiness in dark times.

Charity no. 235833 Charities aims as recorded on the Charity Commission website:

‘Provides small grants for those in need, those who are sick, those who require help for purchase of equipment or goods, or who need some respite care or support.’



COLIN BROADBENT

9 July 1926 – 31 October 2020

Colin was born in Henley on the 9th July 1926 second eldest of seven children. His father was head gardener of Park Place, a large estate in Henley, which gave the young Colin an interest in growing things an interest that lasted all his life. He was a member of the Henley Air Training Corps playing the bugle in the band. When he left school he became a telegraph boy then went on to work in the Post Office.

Being in the ATC he had hoped to join the Air Force but all the places were full so he joined the Army. He rose to the rank of Warrent Officer serving in Palestine and

Israel and then with his Post Office background was put in charge of the troops postal service in Cyprus, stationed in Nicosia. He was released from the Army in 1948 and married his first wife Audrey in the April of that year. He joined WH Smiths and after doing relief work in various branches he was given his own shop in Pangbourne and moved to number 16 Bucknell Avenue settling down to family life, having three children and enjoying village life. He was a keen sportsman and played squash and badminton at Pangbourne Nautical College, as it was then and was instrumental in getting the run down tennis courts refurbished. By this time Audrey and her sister Betty were part time staff at WHS joining full timers Pam and Margaret. They were happy days and continued with the same staff for many years. Sadly Audrey was diagnosed with cancer and died on New Years Eve 1976. Margaret had been a family friend for several years and happily in Sept 1978 he married her and she moved in with him and youngest daughter Deirdre. He retired from WHS a few years later but feeling the need to do something joined Richard's office staff at Percy Stone's, a time he really enjoyed.

He took up golf and horse riding and enjoyed life until his health let him down and he needed a wheel chair to get around, but he still enjoyed rides out to the garden centres and a coffee or two in Costas. He passed away on the 31st October at home holding Margaret's hand. He was the best, a lovely gentle man and will be sadly missed.

I would like to thank all the kind friends who sent condolences, cards, letters and offers of help when Colin died. They brightened a time of such sadness and loss.

Margaret Broadbent

SPRING INTO SPRING . . . STARS IN YOUR EYES

With spring just around the corner hopefully the light at the end of the lockdown points to better things and getting back to normality. Like melting snows or receding floods, Christmas seems to be so long ago.

I would like to thank all who contributed to "Sue Ryder" Duchess of Kent donations to Santa and to thank Denny, Zach and their lovely team @baxters who allowed us to congregate (socially distanced) at her restaurant. Total raised so far is approximately £350.

National attention was afforded to Pangbourne in January when I was privileged to be "live" to the nation on *This Morning* with Holly Willoughby and Philip Schofield talking about the benefits of Tree Hugging. Reports of a film, book and documentary coming from this are premature . . . however magazine articles and an offer to my son Jack from Quentin Tarantino may be achievable.

During the lockdown it's important to have a purpose, routine and keep in touch with people if not in person then via phone or computer. Hobbies are also important and Ginny and I have taken up "log fishing" . . . The satisfaction



of seeing a log floating along the "Blessed" River Pang or the Thames – the apparatus needed of ropes, learning the honda knot for a lasso and . . . judging patiently the flow, eddies, babbles and ripples . . . sometimes quickly, sometimes slowly lassoing a log and displaying it proudly in our garden.

We have finally found out the age old question of why we learnt logarithms at school.

If your log of life needs help . . . such as feeling of being cut off, cast adrift or directionless . . . Hypnosis can help . . . call 0788 187 85 45 and book a consultation @ my consulting room in the heart of Reading.

And finally (in Two Ronnies style) . . . from our good friend Lorraine – what tree do humans and dogs use regularly . . . a lavatree . . . and as a wise fisherman might sing as a sea shanty . . . this spring may you find your porpoise in life.

Jim Tubbs-Galley

Hypnotherapist, NLP Master, Reiki Master and Tree Hugger

LOCAL ARTWORK ON OUR HIGH STREET

The newest addition to brighten up Pangbourne's streets during this dreary lockdown, can be found in the heart of the village at Nino's restaurant. Designed by Gianluca Cau Tait (a 21 year old artist living in Pangbourne), the piece is a depiction of our high street nestled among famous Italian landmarks. This pen drawing has been mixed with computer illustration to create "a little slice of Italy" merged the Pangbourne street scene we all know and love.

Gianluca is currently studying Architecture at Edinburgh university, but due to the lockdown has found himself back at the family home in Pangbourne. He has kindly donated his artwork to the restaurant as a way of helping Nino promote the re-launch of their takeaway only offering, as well as providing the community with something beautiful to stop and admire whilst out on their walks. If you haven't seen it yet, be sure to stop by Nino's shop window and enjoy it! (Found opposite Garlands Organic shop.)

To see more of his artwork and for all enquiries/commissions, Gianluca can be found by emailing gianluca.cautait@gmail.com or on instagram, @gianlucacautait.

Nino's are open for takeaway Thursday to Saturday, 5pm-9pm, and their menu can be found online.



THE THAMES MARVELS CHARITY SWIM

The lure of the open water and an exciting challenge for a relevant cause has drawn six ladies together for an English Channel relay swim. Sometime towards the end of June/early July the Thames Marvels will attempt to swim in costumes (no wetsuits allowed) across the busiest shipping lane in the world, encountering jellyfish, unsettled weather, flotsam and jetsam, choppy waters and tide changes as they go. Local Pilates teacher, Physiotherapist and Director of The Movement Clinic Ltd, Vicky Elson Smith, and music teacher from St Andrews School Rebecca Bell will be joined by four other local swimmers, to attempt the challenge of battling it out on the choppy seas to raise money for the Charlie Waller Memorial Trust. This charity was started by the family of Charlie Waller who had depression and took his own life in 1997; they specialise in educating young people, and those responsible for them, about mental health and well being, which is particularly relevant in these troubled times. They have become one of the most well known and respected mental health charities in the UK and they aim to further reduce the stigma that still exists around mental health.

The Thames MARVELS – Marika, Elaine, Rebecca, Vicky, Elizabeth (Liz) and Lee became friends through swimming with the Henley Open Water Swimming Club, an organisation that gives fellow enthusiasts the opportunity to dip all year round in the Thames and other rivers and lakes in the area, not to mention the sea (COVID restrictions allowing). They have continued to train into the depths of winter with temperatures plummeting to below 2 degrees in the water during a time when COVID restrictions and flooding have made safe swimming a real challenge. All pool lane training has ceased as public pools have closed – so between them, the team have taken to zoom yoga, Pilates, running and kayaking to keep their fitness levels up during lockdown. The friendship and camaraderie of the group has kept everyone going through what could have been a difficult and lonely few months and the joy of being in the fresh water has been invigorating and refreshing, both physically and mentally. The Marvels are looking forward to their Channel crossing this summer; they very much hope that you will support this fantastic charity because mental health matters.

Here is the link to our Justgiving page. 100% of any donations go to the charity as we have covered all the costs of the swim challenge ourselves.

www.justgiving.com/fundraising/thamesmarvels

Vicky Elson Smith



APT COMPLETE PHASE ONE OF THE MODERNISATION PROJECT

The Trustees of APT, Action for Pangbourne Toilets, are delighted to say they have now completed Phase One of their project to modernise the toilet block in Station Road and bring it up to standard for the 21st century.

The work on the disabled facility was completed just before Christmas and APT held a short, socially distanced event of six people outside the block on Saturday December 19th. APT Chair, Sir Brian Hoskins, gave a short speech before local supporter, Lorraine McDougall, cut the ribbon and opened the door to show everyone the work that has been done.

This is a great achievement by the APT and demonstrates how a local group can improve the village for the benefit of all, beginning with supporting the less able in the community.

Phase Two is to modernise the Ladies Facility and already plans are afoot to begin the work at the end of 2021. The Good Exchange project, reference 18253, has now reached its target for donations and includes £5,000 of match funding given by the Greenham Trust.

The Trustees of APT are now hoping that the remaining money required to complete the project will be raised via the Co-op Community Fund, as both Co-op outlets in the village are supporting the cause. If you have a Co-op card, please log onto their website and tick the box to support APT and 2% of most Co-op products you purchase will be allocated to the modernisation programme.

In addition, APT trustees were delighted to have been awarded a grant of £1000 from the Pangbourne Rotarians and a further grant from West Berkshire Lottery of £500. The former will go to Ladies project and the latter towards the ongoing costs of running the toilet block.

APT trustees are hoping that the local community will continue to support the cause and ALL contributions on project reference 18267 on the Good Exchange platform will receive match funding from The Greenham Trust.

Jackie Malcolm, APT Trustee



APT Chair, Sir Brian Hoskins and supporter Lorraine McDougall.



CALLING ALL ARTISTS

We have planned to run our Art Exhibition in Pangbourne 7-9 May 2021 and have opened our books for entries to be submitted. If you would like to show your works please see details and entry form attached to this post or email clivewilliams@gmx.co.uk for an entry form. We are supporting local source of help for Downs Syndrome children www.sparkles.org.uk as well as Rotary International charities.

LITTER IN PANGBOURNE

(TO THE TUNE OF TWELVE
DAYS OF CHRISTMAS
... WITH APOLOGIES)

*On the fifth day of January
I was walking through the
village and someone left for me:*

5 useless scratch cards,

4 piles of dog poo,

3 used Costa cups,

2 lost face masks,

and a load of litter generally.

Please can we all take a pride in
our village and keep it clean
and tidy.

Jill Palfrey



**WEST BERKSHIRE
BREWERY**

**HELP KEEP THE BEER
FLOWING & SUPPORT
YOUR LOCAL BREWERY**

Crowdfunding coming soon — own a slice of WBB

Register interest at:
westberkshirebrewery.seedrs.com



Seed&Spark is a not-for-profit social enterprise. The seed&Spark logo and all other trademarks are the property of Seed&Spark. All rights reserved. Seed&Spark is a registered trademark of Seed&Spark.

SEEDRS



We're back and ready for Easter
Pop in the shop to place your order now



greensofpangbourne.com 0118 9842063

 GoPButchers  GreensOfPangbourne



**We are back open
for takeaways!**

**THURSDAY – SATURDAY
5PM – 9PM**

*Full menu including:
starters, pasta, pizza,
meat, fish and desserts.*

FIND MENU ONLINE:
www.ninos-trattoria.co.uk



ORDERS TAKEN OVER THE PHONE
Pre-order from 1pm daily on:
**Tel: 0118 984 1333
or 0782 347 0201**

FREE GADGETS ENGINEERED FOR PEOPLE IN AND AROUND PANGBOURNE

The pandemic hasn't stopped the volunteer **MakeAbility** engineers from making equipment and gadgets for people with disabilities or special need. Among the projects recently completed locally by the charity Remap have been:



- Specially-padded bathroom steps to help a six-year-old with the rare RERE Syndrome get in and out of the bath.
- Long-reach window-opener for a woman who finds it impossible to stretch up.
- Wooden extensions to the legs of a dining table so a wheelchair user can sit comfortably close.
- Conversion to the wheels on a walker to allow it to be used on soft ground.

The 25 volunteer MakeAbility engineers at **Remap Berkshire** enjoy using their skills to create custom-made equipment and gadgets for people in the county who have disabilities or special needs and who cannot find anything suitable to buy.

This MakeAbility service is entirely free.

Panel members have a wide variety of expertise between them, ranging from IT and electronics, to metalwork, carpentry and 3D-printing – the list is endless.

Remap Berkshire engineers often work alongside health professionals like occupational therapists, physiotherapists, doctors or Special Educational Needs staff to make sure that the equipment provided safely meets individual situations.



Remap Berkshire has assisted people in all age groups with a wide variety of issues. Some 'MakeAbility' projects are simple, others extremely challenging – all can make a real difference to the recipient's quality of life.

Each piece of equipment is tailor-made to suit specific needs. Many of the materials used are recycled, but some have to be bought using funds kindly contributed from sources including charitable foundations, Rotary Clubs and community groups. Although no charge is made to users, many are so pleased with the service that they choose to make a donation to facilitate projects for others.

The MakeAbility service has continued throughout the pandemic, with all necessary precautions being taken.

Remap Berkshire is one of 70 county **MakeAbility** groups spread across England, Wales and Northern Ireland. The charity (reg. no. 1137666) was founded in 1965 and assists around 3,000 people every year.

FURTHER INFORMATION

Remap Berkshire can be contacted in complete confidence:

07790 127123

berks.caseofficer@remapgroups.org.uk

www.berkshire.remap.org.uk

If you would like a Remap Berkshire speaker to make a Zoom or in-person presentation at your Club, Group or healthcare team, please call 01491 671998 or email berks.publicity@remapgroups.org.uk.

There is no charge.

To find out more about volunteering with Remap, please visit:

<https://www.remap.org.uk/volunteering/making-equipment-for-people-with-disabilities/>



We stock delicious local, British & Continental cheeses as well as a wide range of delicatessen products. We're proud to support small artisan producers.

We pride ourselves on our customer service and are dedicated to providing cheese at its very best.

Come and visit us at 17 Reading Road, Pangbourne
Find us on Facebook – The Pangbourne Cheese Shop
Follow us on Twitter @PangCheeseShop

www.pangbournecheeseshop.co.uk 0118 984 3323

ADVERTISE IN THE PANGBOURNE MAGAZINE

Pangbourne Magazine is issued every other month and has a distribution of 1,600 copies locally.

Contact Herald Graphics on 0118 9311488 or pangbourne@heraldgraphics.co.uk



Garlands for high quality food and much more.

Seeds, nuts and grains | Sustainably caught fish |
Organic fruit and veg | Artisan bread | Dairy &
Non-dairy chilled foods | Speciality and "Free from"
foods | COOK remarkable food for your freezer | Local
beer | Organic wines | Health supplements | Natural
Cosmetics | Eco-friendly household products |
BOODY bamboo clothing | Candles |
Essential Oils | Loyalty scheme

6 Reading Road, Pangbourne, RG8 7LY
0118 9844770 orders@garlandsorganic.co.uk
garlandsorganic.co.uk

Why not join in?

Social distancing doesn't mean no socials...

One of the great things about the Oddfellows is sharing good times with friends.

Although we can't see each other face to face right now, we're doing lots of great stuff online.

Tuesdays, 10.30am
Coffee and Games Morning (Online).

Wednesdays, 3pm
Fun Weekly Quiz (Online).

Thursdays, 11am
Gentle Exercise Class (Online).

Contact Debbie on 07375 935 663 or readingdistrict@oddfellows.co.uk for further information and joining instructions.

 **f Reading Oddfellows**
www.oddfellows.co.uk

The Oddfellows is the trading name of The Independent Order of Odd Fellows Manchester Unity Friendly Society Limited, Incorporated and registered in England and Wales No. 223F. Registered Office Oddfellows House, 184-186 Deansgate, Manchester M3 3WB.

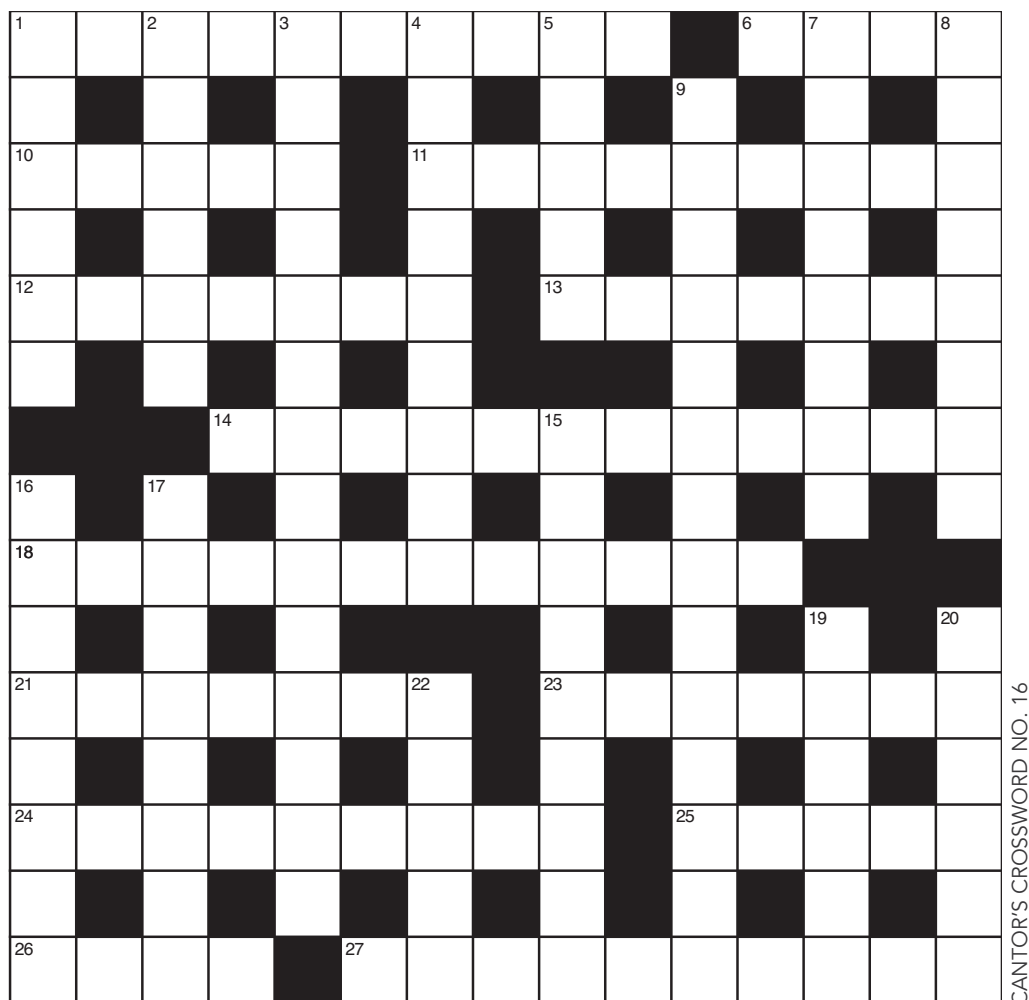
Ref 1699


St Andrew's SCHOOL

An outstanding co-educational day and boarding school set in 54 acres of Berkshire woodland for pupils aged 3-13



To arrange a visit, please contact:
registrar@standrewspangbourne.co.uk
0118 974 4276 www.standrewspangbourne.co.uk



CANTOR'S CROSSWORD NO. 16

ACROSS

1. When Pat dips out it brings an end to what's been happening. (4,4,2)
6. Just sitting around will not put bread on the table . . . oh, there it is. (4)
10. Silly friend took umbrage after desert ride. (5)
11. Start from where you are now but then just keep going . . . until . . . (9)
12. The final level here was less crowded after the first Euro MP's departure. (7)
13. The buzz is that this hairstyle's on the up. (7)
14. Capricorn festival – so it's time for a "greet the goat" party! (1,3,8)
18. To reallocate a tuner in Rome is compensation enough. (12)
21. David thought this big fellow might "sling it": he didn't, so David did! (7)
23. So when do/did you get there? 14, 16, 18, 21..? (4,3)
24. There may be a point to figure, but the pyramid builder lost face on this. (9)
25. So they all went to Rome – straight as a die (sine die?) (5)
26. Very nearly time to call it a day? (4)
27. Backed rep's non-stop proposals where female sibling pitches camp. (10)

DOWN

1. Select extraterrestrial initially to strike at works gates. (6)
2. Gets behind these as master cards. (6)
3. Sounds like the promise of a bubbly visitor to come? (7,2,5)
4. Overall beneficiary, though with threat implied (9)
5. It may be felt personally if the heart is stolen . . . or not. (5)
7. Totally excluded? If so, then what's left? (8)
8. Ursine ancestor(s) hold(s) back from incorrect retelling of Goldilocks story? (8)
9. Some delicacy – as Ed eats a frog pie for starters. (4,2,4,4)
15. For Micawber, these exceeding income = misery (9)
16. As a last resort this line for Bracknell was immaterial (8)
17. By the sound of it... could be an either/or process – hard . . . soft . . . (8)
19. Senior job ability – sex discriminatory element? (6)
20. A place to lay one's head and put up one's feet. (6)
22. A mass gathering here for Thor, deity of Norsemen. (5)

(ANSWERS ON PAGE 26)

CHURCH NEWS

THE PARISH OF PANGBOURNE WITH TIDMARSH AND SULHAM

www.pangbournechurches.org



Sharing God's love with the people we serve



CHURCH SERVICES

St James the Less, Pangbourne

Whilst we are hopeful that things might begin to return to something approaching normal in the next few months, the current uncertainty means that services may change at short notice. You can find up-to-date details of all worship on our website www.pangbournechurches.org/services

April

Maundy Thursday, 1st April

7.30 pm Celebration of the Last Supper Zoom

Good Friday, 2nd April

10 am Family Friendly Worship Zoom
2 pm An Hour at the Cross Live-streamed

Easter Sunday, 4th April

6 am Daybreak Service St James churchyard
10 am Easter Celebration Live-streamed

Sunday 11th

10 am Service of the Word

Sunday 18th

10 am Service of the Word

Sunday 25th

10 am Holy Communion

March

Sunday 7th

10 am Holy Communion Live-streamed

Sunday 14th

Mothering Sunday

10 am Family Worship Zoom

Sunday 21st

10 am Service of the Word Zoom

Sunday 28th

Palm Sunday

10 am Holy Communion Live-streamed



NOAH'S ARK via Zoom

10am on Friday mornings

Check our website for
specific dates:

www.pangbournechurches.org/noah-s-ark

Story time, songs, chat and friendship for babies, toddlers, pre-schoolers, parents, grandparents and carers.

Pick up a posy of flowers on Mothering Sunday

Treat yourself, or someone you love, to a posy of spring flowers from the baskets outside our three parish churches on Mother's Day, 14th March.



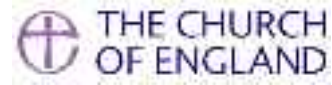
Available after the
10 am service outside:

St James, Pangbourne,
St Lawrence, Tidmarsh
St Nicholas, Sulham

THE PARISH OF PANGBOURNE WITH TIDMARSH AND SULHAM

www.pangbournechurches.org

Sharing God's love with the people we serve



Our Parish Churchyards

In Pangbourne, Tidmarsh and Sulham we are lucky to have three beautiful churchyards, with spring flowers, roses, trees including the magnificent magnolia tree at St James, and about them all is an air of peace and quiet. Largely, all three are looked after by volunteers who give a lot of time to keeping them tended and safe for all visitors and thus saving the parish much needed funds.



Using the churchyard

In Pangbourne, at St James, many people use the paths provided to get to another part of Pangbourne in a safe manner or just as part of their daily exercise - and that of their dog. We welcome everyone using the paths through the churchyard. However, sadly, not everyone clears up after their dog and recently this has become quite a problem. We would request that everyone keeps their dog on a lead and comes equipped with a bag so that they can clear up. It is most unfair to others who enjoy the churchyard and, particularly, to those who give of their time to look after it, if they find that dog owners have not acted responsibly.

Churchyard enquiries

Whilst talking about churchyards, there is space to have ashes interred in any of the three churchyards but contact should be made initially usually with the Rector. In this time of vacancy please contact Jill Palfrey, Churchwarden on 0118 984 2698 or 07721 614686 or our Administrator on office.ptschurches@gmail.com with any queries about interment or memorials.

Churchyard regulations

It is important to note that there are regulations about what can be placed on graves and memorials in the churchyards, including no chippings or glass vases (for very good safety reasons) and it should be noted that at all times the churchyard regulations set out by the Diocese must be followed. Further details can be found on the Parish website, www.pangbournechurches.org and for the regulations regarding all matters to do with churchyards please see the Diocese of Oxford Churchyard Regulations www.oxford.anglican.org/support-services/legal-diocesan-registry/churchyard-regulations/



Bell Ringing at St James

Some of you will have noticed that last year, on a few occasions, we were able to ring the bells, albeit under guidance about social distancing, sanitising etc, and with lots of fresh air through the open door! There were lots of lovely, positive comments. Since then and during lockdowns bell ringing has had to cease.

We are looking forward to resuming ringing for Sunday services and on Thursday practice nights in 2021. However, we realise many of you have got used to not hearing the bells so we will advise our immediate church neighbours when we are able to start again, with notes through doors and a notice on the church notice board and on our website www.pangbournechurches.org

Parish Vacancy Update

Our vacancy planning is well underway. We are currently writing our parish profile which helps inform our potential new incumbent about our parish in Pangbourne, Tidmarsh and Sulham.

We are very fortunate to have a supportive Ministry Team who enable our services to continue throughout the vacancy and the current pandemic.

We will keep you updated of any further developments.

RESOLUTIONS - TRY HYPNOSIS » » » WORK - TRY HYPNOSIS » » » REST - TRY

As seen on 'This Morning' TV!

TranszzzzFormations

*Be free of old habits and
insecurities with hypnotherapy*



Addiction • OCD
Stress • Anxiety and Fear
Depression • Shyness
Public Speaking
Self-Esteem and Confidence
Sleeping Problems
Stop Smoking • Weight Loss

Jim trained at the highly respected RBCCH (Royal Berkshire College of Clinical Hypnosis) and in 1993 trained at UK London College of Clinical Hypnosis, so you can rest assured of many years experience. Drawing from the fields of Hypnotherapy, Cognitive Behaviour Therapy (CBT) and Neuro Linguistic Programming (NLP). Jim uses the most effective techniques from clinical practice to enable you to develop an enhanced and sustainable sense of well being, control and happiness.

Everyday debilitation fears and phobias cause unnecessary distress for thousands of people. Feel better about yourself. Hypnosis will help you retrain your mind so you'll feel much more confident in future situations.

Evenings, late nights and
weekend visits available

07881 878 545

Based in Reading town centre

www.transzzzzformations.co.uk

The Old Forge, 8 Merchants Place, RG1 1DT

Corporate and business
group sessions – hypno
boost your workforce!



» » » HAPPINESS - TRY HYPNOSIS » » » GOOD HEALTH - TRY HYPNOSIS » » » WEALTH CREATION - TRY HYPNOSIS » » »

HYPNOSIS » » » PLAY - TRY HYPNOSIS » » » PHYSICAL - TRY HYPNOSIS » » » MENTAL - TRY HYPNOSIS » » »

» » » EMOTIONAL - TRY HYPNOSIS » » » WEIGHT CONTROL - TRY HYPNOSIS » » »



Lent and Easter at St Bernadette's

www.douaiparish.org.uk

0118-971-5350

The 40-day season of Lent leads up to the celebrations at Easter – reflecting the 40 days Jesus spent in the desert. People associate Lent with giving up something in our lives, but Lent is really marked by prayer, fasting and almsgiving.

This year, the focus of the almsgiving of the parishioners of St Bernadette's is to support the 'Walk for Water' campaign being run by CAFOD, supporting people around the world. We aim to "go the distance this Lent and help to end water poverty."

Many schools, church and youth groups are taking in this challenge. Here in Pangbourne and the other parts of the Douai Abbey Parish, the challenge has been taken up by our young people who are currently preparing for Confirmation. The eight teenagers have a

target of 400,000 steps as a group during Lent! They will walk in solidarity with people who must walk to collect clean water. The money raised through sponsorship will help support the vital work of CAFOD in communities where water is scarce, and the people walk miles to collect it every day in order to survive. For more details (including how to sponsor) please see the parish website.

Church services for Lent and Easter are likely to be a bit different this year. For up-to-date details, please refer to the parish website www.douaiparish.org.uk. This includes links to all of our online services.

This Lent we also plan to have Stations of the Cross in the church garden, which you are welcome to visit to complete privately in your own time.



Woodborough
HOUSE

Say goodbye to awkward gaps and loose dentures.
Get your dream smile with dental implants!

Changing lives through smiles.

CALL US TODAY ON
0118 984 3108

OR EMAIL
CATHY@WOODBOROUGHHOUSE.COM

WWW.WOODBOROUGHHOUSE.COM



You're not normal. No one is. We are all different and we're all wonderfully unique.

At The Movement Clinic we pride ourselves on helping everyone, young and old, find a way to move more and feel better.

We don't do gimmicks or mysterious gadgets, we don't make outrageous claims, we don't offer quick-fix promises, fad diets, or celebrity exercise regimes.

We rely on decades of collective experience and expertise to establish what works for you.

So whether you're injured, in pain, stressed, overweight or just tired of doing the same thing over and over again and getting the same disappointing results, give us a call and find out how we can help.

Personal Coaching • Weight Loss • Strength & Conditioning • Running Technique • Injury Prevention & Rehabilitation
Corrective Exercise • Physio-led Pilates • Specialist Pilates for People with Mobility Issues • Yoga • Massage • Injury Treatment
Strapping & Taping • Neurological Physiotherapy for Adults and Children

www.themovementclinic.co.uk • 0118 327 9405 • info@themovementclinic.co.uk

WEEKLY ZOOM YOGA CLASSES
 Teen Class: Weds 4-5pm
 Adults Level 1: Weds 7-8pm
 Adults Level 2: Weds 8:05pm-9:05pm
 Chair Yoga: Thurs 1:30-2:15pm
 Kids class (4+): Thurs 4:30-5:15pm
 Suitable for all ages and abilities
 1:1 and group
 Private classes available upon request
 Call Kate 07725 947140
www.skelyoga.com

Revitalise Foot Care

Mobile Foot Health Professional

Nail trimming, cracked heels, corn and callus removal, fungal infection, thickened nails and verrucae advice.

**Contact Karen on 07542 676158
or 0118 3435579**

www.revitalisefootcare.com
revitalisefootcare@gmail.com

The Boathouse
Dental Surgery

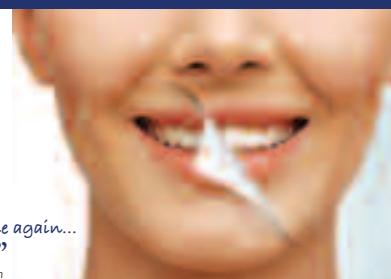
www.boathousedental.co.uk

Tel: 01491 872394

Are you someone
that hides **your** smile?

Let us **reveal** your smile.

"Never thought I'd smile again...
...but now I can."
Martin



High Street, Goring on Thames, Oxfordshire RG8 9AB

Email reception@boathousedental.co.uk

Call 01491 872394 to book a consultation

Berkshire's Exclusive Skin Health & Laser Clinic

Radiant skin, the natural way...

... can be yours with our non-surgical laser facelift and bespoke skin health programs, uniquely developed using science and technology from around the world.

As a specialist laser and skin clinic, we are here to help you.

- Non-surgical laser face & neck lifting
- Acne & rosacea specialists
- Pain-free laser hair removal
- Wrinkle & skin remodelling
- Tattoo removal
- Emsella for incontinence
- Pelvic floor rehabilitation
- Non-surgical blepharoplasty



Andresa Aesthetics Exclusive Skin Health & Laser Clinic

Tel: 01635 800183 | info@andresa.co.uk | www.andresa.co.uk

Lower Wasing Barn, Wasing Lane, Nr Woolhampton RG7 4LY

KJ Cosmetics

— BEAUTY CLINIC —

Laser Hair Removal
&
Skin Rejuvenation

Semi-Permanent
Eyebrows | Eyeliner

Lash Extensions
Lash Lift & Tint

Facials
Dermaplaning
Skin Peels

Massage
Manicure



Free Patching | Free Consultation
Weekend & Evening Appointments

www.kjcosmetics.co.uk
sales@kjcosmetics.co.uk
0115-174-4471

Hawthorn Wood Farm
Bradfield, RG7 4DL



The Boathouse Surgery
Whitchurch Road
Pangbourne
RG8 7DP

DIAGNOSE. TREAT. RECOVER.

WOMEN'S HEALTH PHYSIOTHERAPY



- Rehabilitation of urine leakage, urgency, prolapse, short and long term pelvic pain
- Pre and post Womens health operations
- Pre and post-natal advice and treatment
- Mummy MOT - specialist post-natal assessment from 6 weeks following delivery
- Pre-menopausal, menopausal and post-menopausal conditions and symptoms
- Sexual related problems

Contact us for advice today:

0118 976 7189

boathouse.physio@nhs.net

www.boathousephysiotherapy.co.uk





Chiropractic the McTimoney Way

for people and
small animals

Multi-disciplinary clinic offering integrated
health care in a friendly, relaxed setting

**Chiropody & Podiatry
Sports & Remedial Massage
Acupuncture & Homeopathy**

*Suitable for all ages. Free spine check available.
Evening and weekend appointments available.*

For Health Chiropractic

0118 984 3473

Unit 2, The Old Mill
61 Reading Road
Pangbourne
RG8 7HY

www.forhealthchiropractic.co.uk



The Boathouse Surgery
Whitchurch Road
Pangbourne
RG8 7DP



If you or a loved one are suffering from daily pain that stops you from
doing normal activities then we can help.

- Prepare for or recover from your operation
- Shoulder pain that stops you reaching
- Knee pain that stops you walking
- Back pain that stops you lifting
- Bladder issues that stop you going out worry free

No referral required. Contact us for advice today:

0118 976 7189

boathouse.physio@nhs.net

www.boathousephysiotherapy.co.uk



Cosmetic & Laser Skin Clinic



- laser hair removal
- lines / wrinkles
- crows feet
- lip enhancement
- microdermabrasion
- skin tightening
- brown spots
- skin peels
- mole, cyst, skin tag
- tattoo removal
- facial / leg veins
- Vaser - fat removal
- eye lid surgery
- dermaroller
- underarm sweating
- acne

Professional, Caring and Confidential

Treatments for Men and Women

The
CHILTERN *medical clinic*

Dr N. Munnelly Medical Director



60 Broad Street • Reading • RG1 2AF
1 Thames Court • High Street • Goring • RG8 9AQ

HIGHLY SKILLED DOCTORS RENOWNED FOR EXCELLENCE

Call 01491 873 989 or 0118 958 2016

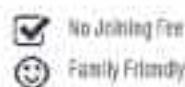
www.chilternmedical.co.uk

It's time to start...



Join now and get January '21 FREE!

BRADFIELD BENEFITS



No Joining Fee



Family Friendly



Flexible Membership



Stunning Location



1-2-1 Personal Training



Cardio & Resistance Gym



Fitness Classes for All Levels



25m Indoor Swimming Pool



Swimming · Fitness Classes · Sports Hall · Gym · Wellbeing



BRADFIELD COLLEGE SPORTS COMPLEX

email: frontdesk@bradfieldcollege.org.uk tel: 0118 964 4600

www.bradfieldsportscomplex.co.uk



SCAN ME

Pangbourne Club

NEW
MEMBERS
WELCOME



Facilities

- Air Con throughout
- 3 full size snooker tables
- Pool Table
- 2, 2mx2m projector screens and large TV's
- BT Sports
- Conference Facilities
- Function Room for hire with kitchen facilities and licenced bar

Entertainment

- Live Entertainment every second saturday of the month
- Bingo every Thursday evening
- Jazz 1st Sunday evening of every month (fee applies)
- Regular exercise classes
- Weekly raffles

LOWEST
DRINK
PRICES
IN THE
VILLAGE



Teams

- Cribbs teams
- Snooker Teams
- Table Tennis



Objectives

PWMC is run as a non-profit making organisation by its members through an elected committee, which provides a social facility for residents of Pangbourne, the surrounding area and for people working in the village.

Pangbourne Club

Rosewood Hall, Whitchurch Rd, Pangbourne, Reading, RG8 7BS

t: 0118 9842885

e: info@pangbourneclub.co.uk

Visit us on Facebook

www.pangbourneclub.co.uk



We greet the Spring, meetings probably still in Zoom mode – but getting there! With the longer days comes the urge to pick up the camera again, we can but hope. Alan our Chairman has done a great job revamping the agenda, securing speakers etc – a big thank you. Another thank you has to go to Ceri Jones for sharing his beautiful bluebell images with us.

MARCH

Wed 3 – *Landscape and People*, John Tilsley APAGB DPAGB ARPS. JT's highly imaginative landscape images captured in Finland, Iceland and Canada together (including East Anglia!). Included in the imagery mix, characterful people at 'events' includes military re-enactments, folk festivals and the New Forest Pony Sales – superb!

Wed 10 – *My Photography*, Paul Stanley FIPF EFIAP/g. The club welcomes Paul, an active member of the Dublin Camera Club, and currently the FIAP Liaison Officer for Ireland. Share his approach (take) on the making his images – mainly "traditional" subjects in the genres of travel, landscape, long exposure and architecture.

Wed 17 – *Wildlife of Texas and Great Britain*. Colin and Pauline Thornhill each a DPAGB were recently awarded the prestigious Roll of Honour by the Southern Counties Photographic Federation for their Natural History images. This evening, they show a selection of work taken in such diverse, contrasting climes – excellent.

Wed 24 – *Me and Mr Grumpy*. Louise Walton CPAGB along with her partner Gary Langley DPAGB (aka Mr Grumpy) present a light hearted mixture of both their work that they have taken together over the past years. Louise and Gary will talk about their images separately with quips and stories along the way – no domestics.



Wed 31 – *Digital competition No 4*. There is no set subject tonight when our projected digital images are judged by Julie Cleaver ARPS from the Imagez Camera Club.

APRIL

Wed 7 – *Kenya Photo Safari*. Glyn Edmunds takes us on a typical safari when he shows stunning images including big cats and the wildebeest migration taken in Samburu, the Masai Mara and other locations.

Wed 14 – *Each to His Own Way*. Ian Boulton shares his passion for Street Photography with us showing mainly monochrome images. He also includes some urban and infrared landscapes for added interest.

Wed 21 – *Making A Silk Purse From a Sow's Ear*. Neil Scott FRPS shows how he tries to make a good image from a weak one, or a better image from a mediocre one.

Wed 28 – *Never Under Estimate An Old Woman With A Camera*. Sally Sallett ARPS AFIAP CPAGB BPE3* presents a light hearted trip through her 10 years in Club photography.

Full details of our future meetings will be found on our website: www.whitchurchhillcameraclub.co.uk

Or you can ring our Chairman, Alan Copeland, on 01491 681471 for further information.

With our best wishes.

Lyn Higgs, WHCC



PANGBOURNE ALLOTMENTS

At the time of writing, spring seems a long way off – but by publication date, maybe it will have arrived. Winter is a quiet time on the allotments, but several deliveries of woodchips mean that people have been able to re-surface their paths during the lull, and keep the worst of the puddles off the track.

A number of allotmenters have volunteered to plant a couple of trees each under the Woodland Trust's Plant for Britain scheme, and keep an eye on them until they are established. They will be round the perimeter of the allotments so that their shade in future will not be a problem: but the trees are very small, so it will be some years before this occurs! Some are slightly larger, as Matt Shaw has nurtured them in pots for a couple of years, and also donated some tree guards and canes to give them the best chance of success.

Thanks to the threat of avian flu, the poor chickens have been confined to quarters for some time: it's not just humans in lockdown! Let's hope we will all be out of confinement and working on our allotments soon.

In the meantime, there is still quite a lot of harvesting to be done to keep us fit and healthy, with curly kale being a popular favourite.

If you would like to join the allotment fraternity, please contact the Assistant Parish Clerk, pangbourneasstclerk@gmail.com, or Jo Power on 0118 9845898.



PANGBOURNE TENNIS CLUB

LOOKING FORWARD TO GETTING BACK ON COURT!

The tennis courts have been closed since early January once again as part of the COVID 19 lockdown. Hopefully, by the time you are reading this there will be good news, both that the pandemic is in retreat and that tennis is back. Tennis a great way to get outdoors to enjoy a naturally socially-distanced sport after so many months of lockdown and we will be delighted if the courts are really busy once play restarts. The club welcomes all standards and all ages, from four years old upwards, so if you not a member but would like to play, please do get in touch at info@pangbournetennis.org to find out more.

We are keeping a close eye on government announcements and advice from the LTA to be ready to work with the Parish Council and open the courts as soon as this is allowed. If the process of opening up is similar to last spring, we are anticipating that singles play will restart first and doubles with players from different households will have to wait for a while longer, along with group coaching. But, as soon as singles play resumes, we will run our popular singles leagues again (for adults and juniors) and Damian Lane, the club coach will be available for individual sessions.

Check our website (www.pangbournetennis.org) for the latest information.

Looking forward to the spring, the club will be resurfacing one court and re-spraying the pair of courts. Our facilities will be top-notch ready for a busy spring and summer season, pandemic permitting.

Keep safe and well!

*Pangbourne Tennis
Club Committee*

pangbourne
tennisclub



GORING GAP BOAT CLUB

At the time of writing, sadly our boathouse is still shut and we have been unable to row, or have any club activities, for some months now. Our only consolation being that the high water level means the river would be un-rowable anyway.

GGBC members have not been idle of late, however. A skilled and dedicated band of volunteers have been hard at work and the mezzanine floor in the boathouse is now finished. The slipway was completed in October, to be used for launching boats into the Thames.

Once the first national lockdown was eased we were able to take to the water in single sculls, and for a short period of time we managed to row in 4's and 8's, in a carefully managed way.

If restrictions allow, we are hoping to run a *Learn To Row* course in April. For details, please contact the Captain of Rowing at captainofrowing@goringgapbc.co.uk.

*Goring Gap Boat Club . . . Get on Board . . .
Recreational Rowing for the Community*

PANGBOURNE AND DISTRICT BOWLS CLUB

Just a few weeks left now until we start the new season with our Open Day on Saturday, 17th April at 2.00 pm. That is the theory, anyway. In practice, it may be a different tale. I am optimistic that we will definitely be bowling again this season. The signs are good. The vaccine program is rolling out well and there are positive signs that the pandemic is receding.

Our Match Secretary has arranged a full season of competitions and games which will be enjoyed by our members throughout the summer months up to the end of September. Our picture shows a group of bowlers who recently enjoyed a bowls weekend away at Torquay.

We really would like to see lots of new members this year, both ladies and gentlemen, and we have a Special Offer for anyone joining our club this season. New members will pay just half of the normal subscription fee for the first season resulting in a saving of over £40.00.

Our bowling green is at the Recreation Ground, Thames Avenue, Pangbourne and we look forward to seeing you at our Open Day when you can meet us all and take advantage of the greatly reduced membership fee for this year.

For further details, please contact Alan Copeland by e-mail to alan@alancopeland.co.uk or by phone on 01491-681471.



PURLEY HORTICULTURAL SOCIETY

We are hoping to open the Trading Store on Saturdays only for the time being (not Sundays) from the 6th March (10am to 11am). Spring Show cannot be held due to the pandemic. We hope to be able to hold Summer Show in September.


Please check the Society's website for further details.

Marion Dabbs
9422349



PLAY CRICKET FOR PANGBOURNE

CALL Cpt. DAN: 07956 526 505
www.pangbournecc.org




FOOTBALL CRAZY?

Join us at Pangbourne Youth FC.

Girls and boys aged from 5 years welcome to join our friendly club to train and play matches

PYFC PROVIDES AN INCLUSIVE, FUN AND SAFE ENVIRONMENT FOR BOYS AND GIRLS WITH COACHES WHO ARE FA LEVEL 1 TRAINED

For more information please get in touch with PYFC via our website:
www.pangbourneyouth.co.uk



ADVENTURE DOLPHIN CHARITY

As many will be aware this has been a very difficult start to the year. January usually sees us prepare for the summer months and print our programmes, train the team on anything new and check all our equipment. This year we have been hit by the third lockdown, unsure who will be able to coach due to vaccination roll out and who will want to join us as we have been technically closed for the last year!! Then we find the water rising into the building with the recent flooding.

That said, we continue and have managed some training on line and over 50 members attended our annual AGM, a virtual meeting held at the end of January.

The Treasurer was able to report that the previous year we had made a small surplus. The challenge was of course the current year when we have had almost no income. He felt that we would need to use a lot of our reserves to balance the books and then hope that this summer we may be able to operate some of our programmes even if in a limited way. This is important to us all so we can still maintain our project and programmes.

We welcomed Dr Brian Davies as a new member of the Trustees, but noted we were still up to five places open for recruitment. So we are appealing to you the readers of the magazine that if you would like to be part of the Organisation please contact us at info@adventuredolphin.co.uk and we will get back to you for an informal discussion.

The Chairman on behalf of the membership wished to note the tremendous efforts given to Adventure Dolphin from seven members who over the years had gone more than the extra mile. All of them have been with us for many years carrying out many roles and in some cases still do. The Trustees felt recognition should be made with the Award of a life membership.

Linda Clark over her 34 years she started as a helper with the DofE group, moving to a canoe coach then an evening leader then taking on the role of an evening co-ordinator. This she followed up with becoming a coach educator when she lead local trips and those further afield including leading on a Project 2000 expedition. She has regularly helped out at the marathon and since the Charity took on the DofE has been helping manage the group.

Janet Porter has been involved with the delivery of the BETA;BEL;BELA: Lowland Leader Award of Sport's Leader UK for 31 years. She was recruited as a helper from the first cohort that went through the Award. In that time she has helped deliver the Award each year. Her undoubted skills has taken her on many expeditions both in the UK and abroad supporting canoe expeditions and helping lead a Project 2000 expedition. She is currently also helping the DofE by supervising and assessing groups.

Malcolm Clark came to us through canoeing via Scouts. He completed his proficiency Award over thirty years ago and was then encouraged to become more involved

joining many trips and mini expeditions. This in turn lead him to qualify as a coach and take on an evening co-ordination. The trips were becoming more advanced to Austria and France with Malcolm playing a key role. He went on to qualify as one of the first Open Canoe Senior Instructor's we had and then a coach educator in both kayak and canoe. He has been a foundation of the many open canoe expeditions to Canada as well as an advocate for the canoe. For many years Malcom was responsible for our water based training programme for leaders.

Vicky Metcalfe I believe first came to us through her children learning to paddle. She learnt to paddle and took part in many trips both locally and abroad. She was the 1000th paddler to complete the summer holiday paddle from Pangbourne to the Baycraft Barge moored in Henley. She was a key supporter of the Pangbourne Chicks an all female junior team in the paddlesport regional series. Like many others her paddling improved and she became a coach and a regular on the evening courses. She found a passion for marathon racing and soon became our lead of the competition side Pangbourne canoe Club. Gradually over the years became the co-ordinator for our annual marathon. This grew until we found it was the biggest marathon in the Country. Thus it was not surprising that we were asked to host the National Hasler Final, and then through the success another one before we took on running the National Championships who else but Vicky to co-ordinate them. She continues to paddle and encourage the competition element to achieve a place in the Hasler finals. Her own results in the Waterside Series and Devizes to Westminster winning her class has been amazing.

John Bethell joined us over 25 years ago, coming with a love to paddle particularly kayak. He joined us on many white water trips eventually qualifying as a white water coach. This he put to good use running a series of trips both here and abroad. A regular helper on the evening courses he soon took over as a co-ordinator where he has been the Wednesday lead for many years. His skills as a life saving teacher and first aid trainer have been used well over the years. John is still a key member of the coaching team looking after a team of 20 coaches and helpers.

Ian Blatchley picked up paddling as a relaxation from his farming duties. He gradually improved his paddling in many areas, eventually becoming a coach. He was a regular helper in the evenings and began running local trips. This, over the last 25 years graduated to trips to the Allier, Ardeche and Durance developing the white water paddling throughout the membership. He soon became the co-ordinator on a Thursday evening where he looks after a team of 20 other coaches and helpers. Ian is a real enthusiast trying all branches of the sport be it racing in the the DW and Waterside series, to slalom, surfing, sea paddling and white water in both Kayak and canoe. Ian is a key member of the leadership team and continues to chair the trips working group.

Ed Edwards like many others came to us over 25 years ago through his family learning to paddle. As a teacher his School's soon became regular features of the summer day time programmes. Always one to broaden people's horizons brought a whole year group of 90 to have the usual multi activity day, but they all caught a bus from school, then a train and walked round to the club all on time, making it a true adventure. His interest in sport gave him a head start and quickly became a coach and a regular member of the evening teams. He has run many trips both here in the UK and abroad his enthusiasm rubbing off on all of us. He has been responsible for the water safety at the Marathon and Nationals. As the Charity gradually began to take responsibility for the programmes and leadership, Ed stepped up to become a Trustee initially he took responsibility for Governance and vice chair of the Seneschal. He then took on our safeguarding lead and checking everyone's DBS checks. He has been a foundation of much that has gone on over the past few years and I wish to thank him for his efforts.

As you will have noted from past articles the Charity is run entirely by volunteers, thus we are always indebted to their commitment, enthusiasm and hard work for all they do.

DUKE OF EDINBURGH'S AWARD SUCCESS

Due to the difficulties of completing the expedition section over the past year the DofE has brought in the new Award of a Certificate of achievement. This is awarded at each level to those completing all of the sections (Skill; Physical and Volunteering with an extra Residential section at Gold level) except the expedition, although this can be done later and a full Award will be given. The following members have received their Awards:

Gold: Shivam Bharati and Sanchit Aapan

Silver: Isaac Aitchison and Louis Kennard

Bronze: Andrew Jackson, Isabella Carpenter,
James Cormack, Reuben Poole,
Andrew Tott and Tom Wells.

We wish to congratulate them all and hope that they will be able to finish their expeditions later this year.

We hope that we will be in a position to recruit for this year's teams as soon as we have helped those wanting to finish their expeditions. So we hope this may be possible by mid summer. Please contact DofEcoordinator@AdventureDolphin.co.uk for more information.

LOOKING TO THE FUTURE

Community Activities were just beginning to plan to re open last October so we hope that in the not too distant future many will return, please keep looking on our website where we will post information.

Angela Cullinan who is looking after our community bookings has been working hard to make office space available for those who may need a different place to work occasionally. This we have piloted and was successful. If you are interested please email bookings@Adventuredolphin.co.uk.

As far as our activities are looking we would hope to look at small group/family climbing when able and begin to offer Kayak, Stand Up paddleboard and Open Canoe courses during the summer evenings as soon as we are able, but again information and booking will be on our website.

The activity club session will resume as soon as possible. We have the outstanding DofE Bronze and Silver expeditions to complete before we are in a position to recruit for this year. We hope we may be in a position to recruit in mid summer.

We are planning to host a number of come and try it sessions for local residents and welcome people in to the building now it has been refurbished as soon as we are able to do so, but until then we do the best we can.

For more information please visit our website www.AdventureDolphin.co.uk.



PANGBOURNE HERITAGE GROUP

GONE FISHING

I'm gone fishing

I got me a line

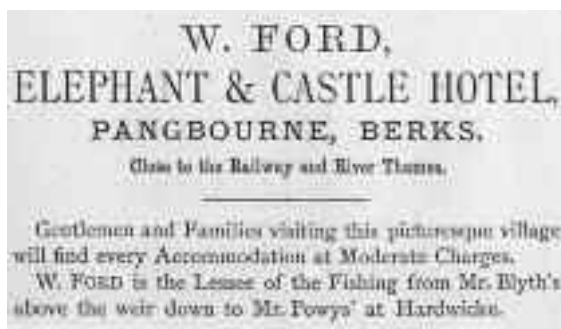
Nothing I do is going to make any difference

So I'm taking my time

(A quote from Chris Rea's song: *Gone Fishing*)

Generations of village children have whiled away their time with fishing tackle purchased from Tidburys [at one time] or elsewhere, down by the Thames or the Pang, hoping to catch something edible.

The opening of the GWR railway with a station at Pangbourne was an opportunity to encourage day trippers to come to the river and try their luck. The advertisements show that fishing was big business for both the George and Elephant hotels. In the 1851 census John Ford's occupation was given as a fisherman, the family living in a cottage near the Swan.



Charles Holmes and Martin Vickery, 1967.

News of the World Angling Championships took place on six Sundays from June to September. The Anglers' Express train departed Paddington at 10.10am, arriving at Pangbourne at 11.10am. The return fare was 4 shillings. The contestants assembled at the Swan and drew tickets. They were allotted 'stations' up and down stream. The start was 12 noon. Stewards walked the bank to make sure the rules were adhered to. The prizes were NoW fishing rods, four awarded each Sunday. You were limited to winning two rods and were awarded points. On the final Sunday Gold Medals were distributed to the overall winners. There was also a Ladies' rod prize. The points and prizes were given for the best fish in each category: Roach, Dace etc, and all but Pike were put back alive. At 6pm the weigh in was at the Swan, and rods awarded. The train departed at 7.45pm and arrived at Paddington at 9pm. The competition ran until 1938.

Pangbourne is still a popular fishing venue as seen last summer, but now fishers have to contend with boats, swimmers, canoes and paddleboards.

Our latest enthusiast is an otter, perhaps after the crayfish now in the Thames and the Pang.

Jane Rawlins and Lesley Crimp

(Photos courtesy of Jane Rawlins)

CANTOR'S CROSSWORD NO. 16 ANSWERS

Across

1 PUTS PAID TO, 6 LOAF, 10 CHUMP, 11 HEREAFTER, 12 EMPTIER, 13 BEEHIVE, 14 A GET TOGETHER, 18 REMUNERATION, 21 GOLIATH, 23 OVER AGE, 24 TRIHEDRON, 25 ROADS, 26 NIGH, 27 PERSISTENT

Down

1 PICKET, 2 TRUMPS, 3 POPPING IN LATER, 4 INHERITOR, 5 THROB, 7 OUTRIGHT, 8 FORBEARS, 9 PÂTÉ DE FOIE GRAS, 15 OUTGOINGS, 16 BRIGHTON, 17 SMELTING, 19 MANAGE, 20 BEDSIT, 22 HORDE

PANGBOURNE TWINNING ASSOCIATION

First of all, a very warm welcome to new members of the Association. We hope that membership, which remains free for everybody, will enable you to renew your acquaintance with all things French.

VISIT TO HOUDAN

As we write, the restrictions on travel caused by Covid mean that the prospects for a visit to Houdan in May are receding by the minute.

A visit in the autumn remains a possibility, as **Friday 24 to Monday 27 September** coincides with Houdan's Foire Saint-Mathieu. Founded in 1065 – one year before the Battle of Hastings! – it is one of the oldest in Europe, and retains something of its medieval flavour, as a trade, craft, automotive, agricultural and poultry fair. There is a parade with a band and an exhibition by majorettes, as well as side-shows and stalls in the streets. Cattle are exhibited – and traded – under the trees of an avenue, and nearby is a marquee exhibition of small animals and poultry. There is even a chance actually to set eyes on an Houdan hen.



Foire Saint-Mathieu.



Houdan cock and hen.

If we can go then, the weekend sheds new light on our twinned town, so do make a note of the dates in your diary.

FRENCH LANGUAGE LESSONS

In anticipation of the autumn, make productive use of those enforced hours of Lockdown by brushing up your French. Our lessons at **Beginner/Improver level** on Zoom are proving very popular, so much so that we are looking for French Language Teachers.

Are you a **French Language Teacher**, a former French Language Teacher or somebody who had always wanted to help in that way? We would love to hear from you, to help us expand our French Language lessons. Details are available from Lauren Kilsby via our website pangbourne-twinning.org.

COMMITTEE

We are very glad to welcome Russell Morse to our Committee. Russell, who now lives in Tilehurst, was at school in France for two years, and we are delighted to have his first-hand experience.

Membership of the Committee is not exacting but, with two members already well past their sell-by date, a further **new Committee member** would be very welcome. Please contact Lauren Kilsby if you are interested.

MARCHER ET PARLER

The initiative (Walk and Talk) will continue its relaxed countryside rambles in small groups just as soon as Covid allows. They are an excellent way to exercise both one's body and one's French. Again, Lauren Kilsby is the contact, via pangbourne-twinning.org.

ASSOCIATION ACTIVITIES

We regret that, because of the pandemic, the next film night will not take place until the end of October, at the earliest. As is also the case for our other social and fundraising events, we will keep you fully informed about when these activities can start again.

In the meantime, stay safe and dream of better times. They will surely come, as will resumed face-to-face contact with our Houdan friends.

À notre prochaine visite!

Alison Hill, Nigel Suffield-Jones and Lauren Kilsby





FREE Health MOT
Interactive Kiosk

Online & 1-to-1
Fitness Classes &
Health Coaching

Infrared
Recovery Clothing

19 Reading Road,
Fangbourne
RG8 7LR

0118 418 1825

OSTEOPATHY - ACUPUNCTURE - NUTRITION - HOMEOPATHY - MASSAGE
YOGA & PILATES - REFLEXOLOGY - PREGNANCY TREATMENTS
DNA & FUNCTIONAL BLOOD TESTING - EXERCISE REHAB

FORMULA HEALTH

Advanced Integrative Health clinic founded by award -
winning Osteopath, Gemma Fisher M.Ost
The first Human Performance Consultant in Formula 1



Book a **FREE**
discovery call to
learn about our
Personalised
Health
Programmes





info@formulahealth.co.uk | www.formulahealth.co.uk | #Formula_Health_UK

ALCOHOL COUNSELLING

*Are you worried about your drinking or
about the drinking of someone you love?
If so, I can help.*

QUALIFICATIONS:
MSc in Addiction Psychology & Counselling from London South Bank University
Member of the British Association of Counselling & Psychotherapy (BACP)

PLEASE VISIT MY WEBSITE
stewartkennedycounselling.com

Please call, text or email Stewart:
07711 872 548 stewartmkennedy@sky.com



andrea newill
GARDEN DESIGN

Beautifully designed gardens by
experienced, qualified, local
garden designer

Andrea Newill M5GD
info@andreanewill.co.uk www.andreanewill.co.uk
07901 856408 0118 9710450



**THE ALE
wellbeing
CENTRE**

- Osteopathy & Cranial Osteopathy
- Podiatry & Chiropody
- Sports & Remedial Massage
- Acupuncture
- Reflexology
- Counselling - Adults & Adolescents
- Hypnotherapy & NLP
- Thai Yoga Massage
- Homeopathy
- Nutrition

37 High Street, Teale,
Reading RG7 5AH
0118 930 3535
www.thealewellbeingcentre.co.uk

Some of the conditions we treat at the Centre:
Back Pain Headaches Neck Pain Sports Injuries Foot Problems Sciatica
Muscle Tension Whiplash Smoking Cessation Weight Control Stress
& Phobias Dietary advice for IBS

Visit our website to see what else we can treat www.thealewellbeingcentre.co.uk






BRADFIELD TENNIS CENTRE

TENNIS MEMBERSHIP 2021

- Discounted rates on courts and courses
 - Advanced booking available
 - Entry to the Club Wimbledon Ballot





Email: tennisinfo@bradfieldcollege.org.uk / Tennis Office: 0118 964 4603/4565




[@BradfieldTennis](https://www.instagram.com/BradfieldTennis)




WE DON'T JUST COACH TENNIS WE LIVE IT!

WOMEN'S HEALTH

BTL EMSELLA™

A breakthrough treatment for complete pelvic floor rehabilitation

Over 40% of women in the UK suffer from embarrassing "oops" moments, also known as urinary incontinence.

Andresa is the **FIRST** clinic in the south of the UK to offer **The BTL Emsella, a non-invasive, clinically proven solution.**

- 95% success rate
- Results in just 3 weeks
- Remain fully clothed and seated throughout
- Backed by science - FDA approved



If you would like to find out more about this unique, life-changing treatment or would like to book a complimentary and confidential consultation, call 01635 800183 | info@andresa.co.uk | www.andresa.co.uk

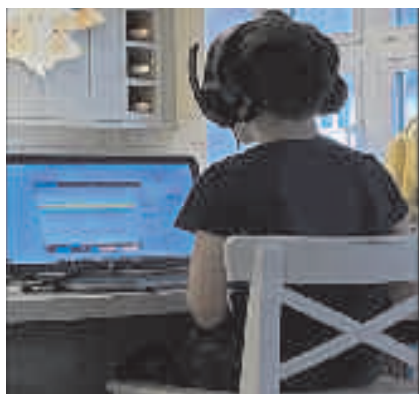
PANGBOURNE PRIMARY SCHOOL



PANGBOURNE PRIMARY SCHOOL

Things are very different at school at the moment but the children are continuing to learn at home in most cases, and others are in school being supported in our childcare hubs.

Staff very quickly changed their classroom teaching sessions to provide remote learning and we have also been able to provide laptops for some children to support this.



Staff remain committed to keeping in touch with children and their families and we are so impressed with the amount of work that has been sent into school.

Home-schooling is not easy as families juggle a number of different aged children and their work commitments every day.



We are all looking forward to a time when we can welcome the children back into school and things can start to return to as normal as possible, with the lively buzz of children learning and enjoying the company of their friends.

We still have places available for three-year olds, five mornings a week from September. We can offer a safe, secure, stimulating environment with experienced teachers and practitioners, where your child will learn through a balance of play and structured activities.



Information and application forms available from: poffice@pangbourne.w-berks.sch.uk.

PANGBOURNE COLLEGE

LARGEST EVER DONATION TO READIFOOD

At the end of last term, our pupils and parents generously provided our largest ever food donation for ReadiFood's Annual Food Bank Appeal. Thank you to Mr David Metcalfe and Mr Ben McLeod who delivered the food in the week before Christmas.

PANGBOURNE PUPILS SET OUT TO 'WIN JANUARY'

Despite the latest lockdown measures, it's been another busy half term at Pangbourne College. Our Director of Sport, Mr Sam Hewick kicked off the New Year with 'Win January'. The initiative was made up of a series of sporting activities, and encouraged pupils to re-define 'winning' to focus on ways they can 'win' every day.



The Rossiters.

There were daily sports skill challenges, weekly fitness challenges and webinars featuring national and international sports players, including rugby international and 2003 World Cup winner, Danny Grewcock. Other speakers included professional Hockey players Holly Hunt and Tommy Alexander, who is also an 'Old Pangbournian' (OP).

Fellow OPs, Jak & Fin Rossiter spoke to our pupils about their experiences of playing professional and semi-professional rugby.

The Boat Club, led by Director of Rowing Mr Richard Follett, created a virtual, Olympic-themed challenge: 'Race to Tokyo'. In just over three weeks, the Club had completed the required distance of 16,348km to reach the Olympic Rowing venue in Tokyo. They are now aiming to circumnavigate the globe before the end of term.



Day 22 and Pangbourne College Boat Club reach the Olympic rowing venue in Tokyo.



Danny Grewcock spoke to the school as part of the 'Win January' webinar series.

STAY DINE WITH ME

Following the success of our 'Come Dine With Me' competition in 2019, Head of Sixth Form, Mr James Bamforth and Head of General Studies, Mr Jack Sims joined forces to create a suitable cooking challenge for the current times.

The 'Stay Dine With Me' competition tasked our Sixth Form students to plan a meal for their family during their weekly General Studies lesson. They then prepared the meal on a set evening and were required to film a video which showed: preparation of ingredients, cooking the meal, and a family member's honest reaction, all within a time frame of just two minutes! The winner and runners-up videos are available to watch on our YouTube channel.



One parent said: 'Fantastic initiative! We all had a lovely evening on the back of it.' Another said: 'The most relaxed Friday night yet. Can you arrange it for once a month?'

DIGITAL DETOX DAY

One of the consequences of having to teach remotely during lockdown is that our staff and pupils are spending many more hours than usual in front of their screens. Therefore, on Wednesday 3 February, as part of Children's Mental Health Week, we had a 'Digital Detox Day' where everyone was encouraged to step away from their screens and do something purposeful. Headmaster Thomas Garnier said: "We were pleased to hear of examples of pupils doing things for others, such as cooking and walking the dog, as well as for themselves, for example, creating a garden bench."

In the meantime, we're looking forward to when we can welcome our staff and pupils back to our beautiful campus, hopefully in March . . .



Unit 12,
Manor Farm,
Peppard Common,
RG9 5LA



YOUR LOCAL GLASS AND GLAZING COMPANY

- All types of glass cut to size
- Mirrors, shelves and table tops
- Greenhouse glass and picture glass
- Full glazing service, trade and domestic
- Broken windows and shopfront glass replaced
 - Traditional leadlights repaired
 - Broken and misted double glazed sealed units replaced
- UPVC, aluminium and hardwood windows, doors and conservatories
 - Delivery service

CALL FOR ADVICE AND FREE QUOTATION

01491 629901

STANROD MOTORS 2

**is happy to collect and deliver your car
for all your MOT and servicing needs**

**Call Steve or Sean
at STANROD MOTORS 2
today on 0118 976 7686**

Open 8am-6pm Mon-Fri • 8am-Noon Sat
14 Station Road, Pangbourne, Reading RG8 7AN
email: info@stanrodmotors2.com

Treating you like family from one generation to the next.

In a good way, of course...

We make buying, selling and letting easy for you.

People come to us because they know we always do the right thing.

Because we get results and are always there when they need us.

And, most of all, because we always treat them like family...

Family values go such a long way...

For more than 70 years, we've been treating people like one of our own – in Reading, Tilehurst, Pangbourne and beyond.

You'll find us friendly, knowledgeable, professional – and here for you.

With Patrick Williams, you're family.
Give us a call and find out for yourself.

Reading: 0118 957 3579
Tilehurst: 0118 942 0777
Pangbourne: 0118 984 4444
info@patrickwilliams.co.uk



www.patrickwilliams.co.uk

A . B .

WALKER

THE FUNERAL PEOPLE

A FAMILY BUSINESS SINCE 1826
 THATCHAM – 01635 873672
 TILEHURST – 0118 304 0068
 READING – 0118 957 3650

ALSO AT BRACKNELL, CAVERSHAM,
 HENLEY, MAIDENHEAD, WOKINGHAM.

TRADITIONAL AND CONTEMPORARY
 FUNERAL SERVICE AND DIRECT CREMATION
 FLORAL DESIGN AND MONUMENTAL MASONRY
 PRE-PAID FUNERALS, LATER LIFE LEGAL SERVICES
 BEREAVEMENT CARE


 WWW.ABWALKER.CO.UK

Golden Charter
 Funeral Plans





Perfect Boundary Limited




Hard Landscaping and Design.

Professional Service. Call for a Quotation.

Email Info@perfectboundarylimited.co.uk
www.perfectboundarylimited.co.uk
 Tel: 01189 968 009 Mob: 07796 202217


- Tree Surgery
- Tree Felling
- Hedge Cutting
- Logs
- Fencing
- Fully Insured
- Fully Qualified
- Free Quotations
- 24 Hour Callouts
- Competitive Prices



Foxes Tree Services & Son Ltd

01488 647204 07979 507 195
robfox@foxestreeservices.co.uk
www.foxestreesurgery.com
 Local business based in Newbury

Hedge Cutting Fencing Plant Hire Obstructive Trees Complete Tree Care Stump Grinding



J A M Upholstery

Traditional Antique & Modern Upholstery
& Re-covering

Seat feeling soft and saggy?
 Arms need firming up?
 Lumbar lacking support?

Jenny can give your favourite chair the love and attention needed to get it back in shape, or simply give it a new look in a new fabric.

www.jamupholstery.co.uk

jenny@jamupholstery.co.uk 07976 443972
 Based in Lower Basildon



Coombe House

RESIDENTIAL CARE

- Retirement home in Streatley on Thames
- 24 hour care and support by well qualified staff
- Elegant, homely and relaxed country house in attractive grounds
- Peace, privacy and independence in caring surroundings
- Serving the local community for over 30 years

01491 872174 www.coombehouse.co.uk enquiries@coombehouse.co.uk



Offering quality tree care
from a family run firm

40 years experience in
planting, pruning and removal

Free estimates and advice

Contact Stewart Bee on

0118 9595 222

07976 611128

beetreeservices@tiscali.co.uk

Seasoned firewood always available



REBECCA KINGWELL

FINANCIAL PLANNER

Comprehensive, bespoke, financial advice & planning



Rebecca Kingwell
BSc (Hons), DipFA

Would you like to start making
better provision for your future and
retirement?

Do you need help understanding
your existing pension
arrangements?

I offer specialist advice on pension
planning, investment planning,
savings, tax efficiency and life and
critical illness protection.



e: rebecca.kingwell@sjpp.co.uk t: 0330 053 6797

www.rebeccakingwell.co.uk

Oxfordshire · Berkshire

Rebecca Kingwell Financial Planner is an Appointed Representative of and represents only
St. James's Place Wealth Management plc (which is authorised and regulated by the Financial
Conduct Authority) for the purpose of advising solely on the Group's wealth management products
and services, more details of which are set out on the Group's website at www.sjp.co.uk/products



15 years guarantee
on all high performance felts
also

Tiling and Lead Repairs

Phone Bradfield

0118 9744701 or

07880 930 958

Email: eddylaming@hotmail.co.uk

38 years experience



NEIL HOULDEY *Quality Painting and Decorating*

- All types of interior and exterior work completed
- Advanced City & Guilds qualified
- General maintenance and repairs undertaken
- Gold CSCS card accreditation
- 30 years experience
- Fully insured
- Pangbourne and surrounding areas

07731 476100 • 0118 9845532

neil.houldey@yahoo.com

www.neilhouldeyqualitypaintinganddecorating.com

PANGBOURNE PLACE-NAMES



*Pangbourne Mill,
side view, c. 1890.*



*Pangbourne Mill c.1900.
(Illustration courtesy of Pangbourne Heritage Group)*



*Pangbourne Mill,
looking towards The Cross Keys.*

PANGBOURNE MILL

The Mill House and a section of the original mill are all that remain today of **Pangbourne Mill** which, in various forms, had stood on that site since Anglo-Saxon times. Some of the associated barn buildings were demolished in 1929 when the mill was taken over by Reading Corporation, and converted into a water pumping station. At that time Tilehurst was being extended on a large scale and, in order to get a water supply for the new houses, water was pumped, and still is today, from the aquifers deep underground at Pangbourne Mill to the newly constructed water tower on Langley Hill. The millpond disappeared under the present structure, as did the adjacent **Mill Mead**, first recorded in 1548 as *Millam Mede* which actually means 'Mill water-meadow (*hamm*, become *-am*) meadow'. However, a trace of milling activity remains, in that perceptive inspection of the riverbanks of the Pang upstream reveals that they have been 'perched' – artificially raised to increase the level of water and with it the water power, to allow the mill to grind for longer.



Robert Stone with his family.

The last miller but one at Pangbourne Mill was Robert Stone, great-grandfather of Richard. Born in High Wycombe in 1852 and only 5ft 2ins tall, he was a man of immense energy and a similar capacity for hard work. After a four year apprenticeship in High Wycombe he took over Pangbourne Mill in 1871 aged 18, so young that at first his father, a chair manufacturer, had to be the actual tenant. In 1873 he married his boyhood sweetheart Rachel, who bore him eleven children, one of whom died in childhood. The business prospered, grinding wheat and barley separately using two waterwheels and four pairs of millstones, and the tenancy of Tidmarsh Mill was added in 1888. At the sale of the Bere Court estate in 1894 Robert achieved his ambition when he bought Pangbourne Mill, together with its residence, meadow and fishery.

A Roman engineer, Vitruvius, in about 25 BC was the first to describe the workings of a watermill, and they hardly altered from then until the late 18th century. The Romans introduced watermills to this country, and many were later built by the Saxons. It has been estimated that in Great Britain at the time of the Domesday Book in 1086 approximately one village in every three nationwide had a mill, each supplying around 50 households. On the Pang there are nine mills listed, the highest up the river being at Frilsham, with three at Bucklebury. For Pangbourne there is in fact mention of two mills, and I shall return later to the probable site of the second later.

The mill was central to medieval life, grinding wheat and rye for bread and barley for beer. Because there was no proper transport in medieval England, the grinding of corn was very much a local, village activity, and the ownership of a mill was a valuable resource for the Lord of the Manor, who could require his tenants to grind their corn at his mill, and pay for the privilege. The miller too was only a tenant, deriving his income from the portion of flour, usually one sixteenth, that he took from the amount he was grinding. With often inaccurate records the system was wide open to abuse, and millers had a bad reputation, until well into the 18th century. Karen Elliott in her authoritative *The History of the Water-Driven Corn Mills at Pangbourne and Tidmarsh* mentions an epitaph in an Essex churchyard for a miller called Strange that reads: *Here lies an honest miller
And that is Strange!*

It was not until an Act of 1796 that this 'toll in kind' was replaced by a monetary charge.

As Dorcas Ward points out in her chapter "Watermills on the River Pang" in the excellent *In the Valley of the Pang*, the fortunes of milling have fluctuated over the centuries. After the ravages to the population of the Black Death around 1350 the demand for milling was reduced, and many mills fell into disuse. Their fortunes revived again in the 16th and 17th centuries, to decline again in the 19th century, with high-quality corn coming to Britain from the New World. This was ground near ports, and at mills inland only if they were accessible via good canal, rail or road links, such as at Pangbourne. Here grain arrived on barges on the River Thames, and the flour was sent off by train from the

PANGBOURNE PLACE-NAMES

Station. In the hands of Robert Stone, and after his death in 1918, Percy, Pangbourne Mill ground high-quality flour profitably to the end. However, most watermills ended their milling days as only grist mills, grinding cereals for animal fodder, before ceasing as mills altogether.

At different periods in English history, attempts were made to diversify out of corn milling. In the Pang Valley, the mill at Tidmarsh, which had been established by the monks of Reading Abbey in 1239, was used for a short time in the 15th century for the fulling – cleansing and thickening – of woollen cloth. From the late 19th century the principal mill in Bucklebury powered the ventilation at the foundry there until it closed in the 1950s. Also in the 19th century, the mill at Bradfield was rebuilt and enlarged from a corn mill to incorporate water-pumping from the well at nearby **St Andrew's Well Field**. For a time it supplied the whole village, including the recently founded College, and a laundry. In the 1870s an attempt was even made to install a turbine to power a refrigeration plant, but the attempt failed.

In more recent times a turbine was installed in Pangbourne Mill which provided the electricity to run the entire Thames Water treatment plant. However by 2007 the turbine was no longer in use and, following the major flood in that year, it was to increase the flow of water through the mill, as part of the flood alleviation measures being taken at that time.

After 1929, when Pangbourne Mill was sold, corn milling was continued in Pangbourne by Robert's son Percy at what is now called the **Old Mill Trading Estate**, Reading Road. Using a new steam, then electric mill, it produced mostly animal feed, but that too ended in 1993. The site is now divided up into a number of independent businesses.



The 1786 eye sketch.

The location of the second mill at Pangbourne is indicated by the 1786 eye sketch of the Thames, showing a small mill beside **Thimble Bridge**, at the bottom centre of the illustration. The outline of the building is still just visible today as a few bricks at ground level, but nobody seems sure exactly what a 'Thimble Mill' actually was. One thinks of a thimble as just a protective device used when sewing, and thimbles from as early as the 10th century have been found in England. They were in common use in the 14th century. However, a thimble is also the protective metal hoop (the eye) that fits inside a rope bent back on itself and spliced for mooring, and it is also used in engineering to describe a ring, tube, sleeve, bushing or ferrule. This interpretation makes sense in the context of the boat-

building that used to take place in the area between **The Swan and Pangbourne College Boat Club**. It is known that in 1693 a Dutch thimblemaker established a factory in Islington, London, and then moved his mill to Buckinghamshire to take advantage of water-powered production. He produced two million thimbles a year, and one wonders whether the waters of the Pang were used similarly.

The only other thimblemill that I am aware of was in Smethwick, Staffordshire. When I contacted Smethwick Public Library, I was told that their mill was probably originally a corn mill, but converted to thimble making. These thimbles were for measuring drinks in public houses, hence the saying "just a thimble full". The mill was later used for cutting files by machinery, but has now disappeared.

What then of windmills? It is thought that this technology was brought to Britain by soldiers returning in the early Middle Ages from the Crusades, having seen it in the eastern Mediterranean. In yesteryear windmills were common on the heights above the Pang Valley, recalled for example at **Windmill House**, East Ilsley, **Windmill Copse**, West Ilsley, and **Windmill Farm**, Compton. The sites of windmills have been identified too at Yattendon and Ashampstead Common, and there must have been one, of whatever size, at **Windmill Field**, Bradfield.

The technical complexities of both windmills and watermills, quite apart from the variations in the power of wind and, to a lesser extent, water, mean that they are uneconomic in the modern world. Most are now demolished, or converted to other uses, many as private houses. However, locally we have the Watermill Theatre at Bagnor and the Mill at Sonning, both having their millwheels only as a redundant, visual feature, but it is still possible to see the technology of a traditional watermill actually in action, at Mapledurham. One realises there that the skills required of a miller were wide-ranging, as Robert Stone would no doubt readily have agreed.

Nigel Suffield-Jones

CORRECTION: In my article 'Stokes View' the source of my information for Shooters Hill House was inaccurate. The owner of the present Shooters Hill Cottage, at the Basildon end of the Seven Deadly Sins, points out that her property is the former ale house called the 'Hole in the Wall'. Shooters Hill House stands on the site of two cottages called Shooters Hill Cottages which were pulled down by Leonard Stokes to make way for DH Evans's property.



Mapledurham Mill.

ICN BUILDERS
BUILDING, CARPENTRY AND HOME IMPROVEMENT SPECIALISTS
ALL WORK GUARANTEED
 OVER 15 YEARS EXPERIENCE

- EXTENSIONS
- ALTERATIONS
- RENOVATIONS
- EXTERNAL DECOR
- CONVERSIONS
- KITCHENS/BATHROOMS
- PATIOS/DRIVES
- LISTED BUILDING WORKS

ALL ASPECTS OF BUILDING WORK UNDERTAKEN
FULLY INSURED • REFERENCES AVAILABLE

0118 9845959 0791 7095379

MWB Carpentry
 Where Detail Matters

Specialist in bespoke furniture and interiors.
 Storage Units, Bookshelves, Media Cabinets
 Kitchens and Worktops
 Cupboards, Wardrobes, Fireplaces,
 Flooring, Skirting, Architraves, Doors and Bespoke
 Office Desks, Shelving and Stud Wall Construction.
 Also garden Rooms, Workshops, Decks, Cladding.

Call Matt - 07850 310220
 e-mail - matt@mwbcarpentry.com
 www.mwbcarpentry.com

DRAIN & ABLE
 Independent Drainage Service
24/7 EMERGENCY SERVICE
GUARANTEED ARRIVAL
ALL TELEPHONE CALLS ANSWERED PERSONALLY
 Call anytime on 0118 957 6244/
 07795 598207
www.drainandable.co.uk

HIGHLY RECOMMENDED

Shaun Guard
TV & WIFI SERVICES

- Aerials - supplied, repaired & poor reception solved
- Satellite - Sky Q dish upgrades, discreet dish installations also foreign TV
- Internet - blackspots cured, data cables to your TVs / computer
- TVs - hung on your wall or set up & tuned
- CCTV & Door Entry - domestic installations

OXFORD AERIALS
Call Pangbourne 01189 639113
www.oxfordaerials.co.uk

ATB Accounting
 Old Breedon School, 8-10 Reading Road,
 Pangbourne RG8 7LY
0118 405 6000

Services include:

Bookkeeping from £18 p/h
 Ltd Co. Accounts from £700 p/a
 VAT Returns from £100 p/a
 Self Assessments from £70 p/a

(ALL PRICES EXCLUDING VAT)

For a free quotation:
 Call us on 0118 405 6000,
 or call in – no appointment necessary,
 or email: charles@atbaccounting.co.uk

LOCKSMITH **ACG SERVICES**

Locks changed, fitted, repaired & opened.
 Yale locks, five lever mortice locks, digital locks,
 UPVC door locks & handles, UPVC window locks.

Emergency callout service

Over thirty years of experience. Free quotations
 Tel: **01491 682050** or **07710 409216**
www.acgservices.co.uk

Office: 3 Wayside Green, Woodcote, Oxon RG8 0PR. Proprietor Richard Homden

DO YOU NEED A WILL OR LASTING POWER OF ATTORNEY?

If so contact **Chris Lawn**, a solicitor working locally,
 on 07843 679 239 or email chris@jonathanlea.net

Chris will visit you at your home.
 Appointments last approximately 1 hour and
 can be held during the day, evening or weekend.

*Hillhampton Wills is now incorporated into
 Jonathan Lea Network Solicitors.*

For further information visit www.chrislawn.com

A MEMBER OF THE INSTITUTE OF PROFESSIONAL
 WILLWRITERS AND FULLY INSURED



*"Lafford & Leavey, experts in
bringing the outside - inside"*

Windows - Doors - Conservatories UPVC or Timber

One of the leading window, door and conservatory installers in Berkshire, offering free quotations and advice from a company with a formidable reputation spanning 50 years. Choose from a wide range of products in a style and finish which will suit your budget and needs, we are only a phone call away.



LAFFORD & LEAVEY LTD

ARROWHEAD ROAD, THEALE, READING, RG7 4AZ

Tel: Reading (0118) 9303333 Fax: (0118) 9323707

Email: info@laffordandleavey.co.uk



PANGBOURNE AND WHITCHURCH SUSTAINABILITY NEWS

IMAGINE Pangbourne in the future. A village with tree lined streets, much less noisy traffic, self sufficient in energy harnessed from water, sun, wind and other natural sources. IMAGINE a thriving retail community where visitors can park for free for an hour, and walk along beautiful pavements safe from parked vehicles. IMAGINE our children walking and cycling to school safely. IMAGINE a community living in houses which are energy efficient with trees and plants in the gardens providing fruit, vegetables and beautiful flowers and know that all that hard work is saving our environment.

The behaviours we have had to adopt during the pandemic have given us a glimpse of what is possible. Less driving, more cycling and walking, more time for gardens and allotments and more attention to what and how we eat and shop have already brought about change.

PAWS with the parish council is working to make all this possible and if we all try a least one environmentally friendly activity we are contributing to the green revolution that is essential to protecting our natural world and all living species. The following are our ongoing projects:

2021 ONGOING PROJECTS

WHAT	HOW TO GET INVOLVED
Community Energy Scheme / Solar Streets Initiative	Rob Hill is leading on these projects – generating local electricity through solar installations for the benefit of individuals and the community. To get involved, please contact Rob Hill on pawsg21@gmail.com
Cycling infrastructure	Jackie Hoskins is leading on this project, with Purley Sustainability Group, to improve provision of cycle parking in Pangbourne, and the safety of the A329 for cyclists. To get involved, please contact Jackie Hoskins on pawsg21@gmail.com
PAWS COP26 Tree campaign	The goal is to plant or sponsor as many trees in Pangbourne and Whitchurch as there are households – campaign launch will be in October. To get involved with the campaign, please contact Jo Smith on pawsg21@gmail.com.

FOCUS ON CYCLING

What do we need?

Recently PAWS received two messages from members of the public about the lack of facilities for cyclists visiting Pangbourne. The first was a keen cyclist who wants to cycle from Purley to Pangbourne to do his shopping. He had two concerns: **travelling along the A329** and **parking his bike in Pangbourne**. The first concern was that the road is extremely busy, it is dangerous for cyclists, and that the alternative path by the railway line is dark and very muddy in winter. He was also concerned to find a safe place to park his bicycle. As we know, new bikes are very expensive. He was not inclined to leave his bike in the corner of the Village Hall Car Park or leaning on a post in the street where it could be easily be removed by modern thieves.

The second message we received came from a family group who want to visit Pangbourne on Saturday mornings, and to **leave the family bikes** somewhere safe while they visit the library and shops. The library has only one cycle place, and so it is inadequate for family parking. The only other space in the centre of the village for bikes is outside Garlands shop, where there is one small rack with four slots (funded and placed there previously by PAWS).

These messages have prompted PAWS, working with the Purley Sustainability group, to look into the problems mentioned to see if we can come up with some proposals for possible changes. We have undertaken a survey of all the cycling facilities for parking bikes around the village and decided that we need more. We have also looked at the main roads into Pangbourne that are very dangerous for cyclists.

However, before we embarked on suggesting changes to Pangbourne Parish Council and West Berks Council, we thought that it would be beneficial to find out exactly what cyclists feel they need, and what changes people feel would encourage them to cycle into or through Pangbourne. To have more people cycling would have a number of



benefits for the people of Pangbourne. It would mean fewer cars on the road and less hassle finding parking spaces. Perhaps more importantly, the air would be cleaner with less car exhausts, and the people cycling would be more active and therefore healthier. It would also go some way to reducing the carbon dioxide emitted in Pangbourne.

Cycling Questionnaire

PAWS and Purley Sustainability Group have, over the last few weeks, developed a Questionnaire with the aim of finding out as much as possible about what local residents and those living in the surrounding villages think about safe cycling to Pangbourne and secure cycle parking in Pangbourne. From the information we receive we will put forward proposals to the Pangbourne Parish Council and West Berkshire Council. West Berks Council will have a platform for public participation on proposed Active Transport routes and street changes in West Berks. We hope to link our results and proposals with the WBC platform. We would be delighted if as many people as possible, regardless of whether you cycle now, fill in the questionnaire. You can do this on line by following this link:

<https://www.surveymonkey.co.uk/r/PQWZ9HC>

or use the link on the PAWS Facebook page: PAWS(Pangbourne and Whitchurch Sustainability)

<https://www.facebook.com/groups/1305707616244014> or by requesting a questionnaire from pawsg21@gmail.com

We think that more people cycling on safer roads and leaving their cycles in secure parking areas would be of benefit to the whole Pangbourne community, the surrounding villages, to West Berks, the Nation and of course the world! This year, with the United Nations Climate Change COP 26 in Glasgow in November, would be a particularly good year to make such changes . We hope that you will be able to help us by filling out our questionnaire with your views and ideas that we can include in our proposals for future changes.

Jackie Hoskins and Heather Thorne



2021 PAWS CALENDAR

WHEN	WHAT	WHERE
Thursday 18 March 8pm start	Talk and discussion: <i>Sustainability in Ethiopia</i>	Over Zoom
Thursday 15 April 8pm start	Talk and discussion with BBOWT: <i>Biodiversity in our villages</i>	Over Zoom
Thursday 20 May 8pm start	PAWS AGM, including a talk and discussion: Peter McManners discusses his new book: <i>Face up to Climate Change: Demand Change Now</i>	Over Zoom
Thursday 17 June 8pm start	Talk and discussion: <i>Is meat production really destroying the planet?</i>	Over Zoom / Pangbourne Village Hall if poss
Sunday 18 July 2pm start	Join with WoTHabs for a Meadow Biodiversity walk led by James Norman The meeting point will be signposted on the day	Meet at the field entrance on the left-hand side of Sheepwash Lane, Hardwick Estate
Sunday 26 September 2pm – 4pm	Apple Pressing Day	Whitchurch Maze, Muddy Lane Whitchurch on Thames
Saturday 16 October 10-12.30pm	Launch of PAWS COP26 Tree Campaign	Outside Garlands
Thursday 21 October 8pm start	Talk and discussion: <i>Trees: their role in biodiversity and climate action</i>	Pangbourne Village Hall
Thursday 18 November 8pm start	Film Night	Pangbourne Village Hall
Thursday 16th December 8pm – 10pm	Christmas Gathering: a celebration of 10+1 years of PAWS! Potluck supper; all welcome	Pangbourne Village Hall

Visit our website www.pawsg.com

and join our Facebook group: PAWS (Pangbourne & Whitchurch Sustainability)

THE SULHAM BROOK SYSTEM



The source of Sulham Brook is from gravel springs situated just to the north-east of Theale; for most of its course it gains groundwater which comes up through the gravels from the underlying chalk aquifer all the way down to its outlet into the River Thames. The catchment of the chalk aquifer includes the whole area both sides of Sulham Gap valley. Most of the River Pang to the north of Hogmoor Copse is higher than the floor of the valley, therefore any water which overbanks the Pang on its east side also makes its way into Sulham Brook.

The Sulham Brook catchment area is relatively small compared with the Pang and therefore reacts very quickly to rainfall. By the same token it drains very quickly and during dryer times when the water table is low, the brook will lose flow downwards into the gravels, mainly in the stretch between Home Farm and the railway bridge. It is usual during most summers for the brook to be dry in this stretch. The name "brook" applies to watercourses that are dry for at least part of most years.

Another factor affecting the brook is that Thames Water abstract water from the chalk aquifer under the area between Tidmarsh / Sulham and Pangbourne. This in turn draws water in the gravels above the chalk down into the chalk

itself which reduces the flow in Sulham Brook. Thames Water are restricted as to how much water they can abstract during dry spells. The restrictions are set by the Environment Agency (EA) using the levels recorded by the Sulham gauge, which is located approximately three hundred metres south of Mill Lane / Sulham Lane junction.

Throughout recent years there has always been water in the brook in Herridge Copse, where the brook passes beneath Sulham Lane, and upstream of that location. In particularly dry summers the mill pond at Home Farm has been dry.

The brook divides at Home Farm with one branch passing through the lake at Purley Hall (PH), the other branch turning west to pass through the mill pond towards Sulham Lane and then north alongside the lane. The lake at PH has entry and exit sluices; the entry sluice is usually kept fully open and the exit sluice fully closed. Thus, the flow of the brook is, at most times, alongside Sulham Lane. The brook then passes under Reading Road through a culvert known as Middle Chain Arch. The exit stream from PH lake passes through another culvert under Reading Road about one hundred metres towards Purley known as East Chain Arch. The two culverts are joined by ditches each side of Reading Road which help to balance the flow through both culverts.

During the major flood event in July 2007, when some 110mm (4 inches) of rain fell in less than 24 hours and more than 150 houses in Pangbourne were flooded, a large amount of water came out of the Pang which flowed over to Sulham Brook, a huge amount of water came from Sulham Hill and across the fields below Sulham Wood all of which overwhelmed the brook. The brook was unable to pass under Reading Road at Middle Chain Arch because there was too much volume of water to get through the culvert and Sulham Lane itself was completely flooded.

The water flooded houses both sides of Reading Road in Sulham Lane, Briars Close, Purley Way, Bourne Road and even as far as Kennedy Drive.

After the 2007 event and after the winter of 2013/14 many steps have been taken to reduce the risk of flooding in Pangbourne. The eroded east bank of the Pang in the BBOWT Nature Reserve at Hogmoor Copse has been repaired and reinforced; a spillway was installed by East Chain Arch to allow excess water in Sulham Brook to discharge into the field between Reading Road and the railway; natural flood management interventions (NFM) have been installed in streams that feed the Pang in the Bradfield/Stanford Dingley area which slow down the rate at which water reaches the Pang; both the Pang and Sulham Brook are maintained more thoroughly; sluice operating procedures have been introduced for all the control structures on both rivers, plus work has been done to clear debris and silt from under the road bridges and remove a turbine in the Thames Water site. The Pang Valley Flood Forum was formed in 2013 with representatives from all the villages on the Pang and officers from the agencies (WBC, EA and Thames Water) who meet regularly to agree actions necessary to keep flood risk to a minimum.



The only control structures on Sulham Brook are the sluices at PH lake and these play an important part in reducing flood risk. During heavy rainfall events the brook fills rapidly and the level at Reading Road culvert approaches the underside of the culvert. When this happens, the flow is disrupted and slows down very markedly causing water to back up the brook alongside Sulham Lane. Opening the exit sluice at PH lake has an immediate effect by taking flow away from the western branch of the brook at Home Farm and diverting it through the lake and out under East Chain Arch. If rainfall is very heavy or prolonged, then the spillway at East Chain Arch allows excess water to flow into the field as described above. See spillway in operation below.

Once the level of the brook falls below 40cm on the Sulham gauge, and provided that the level is well clear of the underside of the Reading Road culverts, then it is safe to close the exit sluice on PH lake. The lake will refill within a matter of hours from the water already in the system. It is only necessary to operate the exit sluice during periods of heavy or prolonged rainfall. The operation of the sluice will have no adverse effect on the lake in terms of keeping a good level of water in it at all times except for the brief periods that the sluice is open. It will have no effect on the wildlife.

Stephen Billyeald
Pangbourne Flood Wardens



FLOODING ADVICE

I hope by the time you are reading this magazine that the flooding is all behind us and we are having better weather.

In early February we had flood alerts issued for both the Thames and the Pang/Sulham Brook and one of the properties in the Moors had flooding in the garden, which was almost up to the house. This was due to a large amount of water coming down the Pang and overbanking, both just at the edge of, and within, the Thames Water site which was then ending up in the Moors stream. A request for assistance came and Stephen, our Flood Warden, together with members of the Parish council and immediate neighbours, turned out late on the Thursday evening to try and give some help. Some of the Parish Council Floodsax were deployed and the water pump brought over from the Village Hall. Thames Water were contacted to request the sluice in their site was opened further to allow the water to pass through the site more quickly and fortunately, internal flooding was avoided. The following morning the sluice gate was opened even further and on the Sunday over 240 sandbags were laid in the Thames Water site by the Flood Wardens and Thames staff to create a bund to hold back some of the overbanking waters.

The Parish Council and Flood wardens would like to sincerely thank **PR Motors** who helped us by doing some work on the water pump at short notice and at no charge.

This is also a timely opportunity to remind residents that you need to:

1. Check whether you are at risk of flooding – www.gov.uk/check-flood-risk
2. Register for alerts from the Environment Agency – 0345-988-1188
3. Watch what is happening on the river gauges on the PVFF website www.floodalleviation.uk
4. Ensure you have your own property flood protection products to hand/fitted in plenty of time. West Berkshire Council's policy on sandbags is that they don't provide them other than to the vulnerable. The Parish council also do not provide sandbags – we have small stock of Floodsax for strategic placement to reduce the risk to an area rather than individual properties. If you have any queries on this please contact us.

If you have any concerns at all regarding flooding, please contact us sooner rather than later so that we have time to mobilise or take action if needed.

Many thanks

Pangbourne Flood Wardens:

Kay Lacey – 07889 231136 Stephen Billyeald – 0118 984 3368 Ed Penney – 07756 432946



OFFICE SPACE AVAILABLE TO LET

Available now

Unit 4 Enterprise House
41 Reading Road, RG8 7HY

560 sq ft – £7,000 a year

Two dedicated parking spaces,
private entrance, gas central heating,
wood-laminate flooring,
dimmable downlights and
fluorescent strips, kitchenette,
cloakroom and separate WC.

To arrange a viewing call or message
07990 520389 / 07775 638611
email: info@themovementclinic.co.uk

CIG.

Chiltern Insurance Group
Pangbourne

Business and Personal Insurance
from your Local Broker

Call 0118 984 3355

www.chilterninsurance.co.uk

St James House, Church Road,
Pangbourne, RG8 7AR

Chiltern Insurance Consultants Ltd are authorised and
regulated by the Financial Conduct Authority
for General Insurance Business.

neville & turner

Village & Country Property Agents

Thinking of selling or letting?

*Whether you require specific valuation and marketing
advice or wish to discuss general property matters and
requirements, please call us - we are here to help.*

T: 0118 984 1841 E: post@neville-turner.co.uk

A: 2 High Street, Pangbourne, Berkshire RG8 7AB

W: www.neville-turner.co.uk



SPB STONEWORKS LTD



Tel: 01189371827 or 07971881504

Visit us @ www.spbstoneworks.co.uk

Email: simonbeale@spbstoneworks.co.uk or admin@spbstoneworks.co.uk

Special offers on all types on memorials from Headstone, Full memorials, Cremation stones, Childrens memorials & Vases
FREE NO OBLIGATION QUOTES and FREE FULL COLOUR BROCHURE ON REQUEST



- MONUMENTAL STONE MASONS.
- SUPPLYING ALL TYPES OF MEMORIALS & HEADSTONES
- 30 YEAR GUARANTEE ON ALL NEW & REPAIR WORK
 - MEMBERS OF BRAMM, NAMM, AND THE GUILD OF MASTER CRAFTSMEN
- RENOVATIONS & CLEANING OF EXISTING MEMORIALS
 - ADDITIONAL INSCRIPTIONS ALL STYLES
 - REPAIRS & RE-LEVELLING
- FAST & FRIENDLY FAMILY RUN COMPANY



**Up to 70% Cheaper than Funeral directors
with 100% Guarantee to beat any memorial quote**

Showroom by appointment

Unit 3 Old Mill Trading Estate, 61 Reading Road, Pangbourne RG8 7HY



ABBOTTS

SHOE REPAIRS & LEATHER GOODS

18 Reading Road, Pangbourne, Berks.

Telephone (0118) 984 1155

Duncan Agar Painter and Decorator

- Highly Experienced, Professional Tradesman
- All Aspects of Interior and Exterior Decorating
 - Traditional and Modern Finishes
 - Period Properties a Speciality
 - Free Quotations and Advice
 - References Available

Tel: 0118 971 2340
& 07787 552 983

PERSONAL TAX RETURNS

Contact Geoffrey Cole

Geoffrey Cole & Co

Chartered Accountants & Registered Auditors

4 Reading Road Pangbourne Berkshire RG8 7LY

Telephone 0118 984 1556 Email post@geoffreyc Cole.co.uk

www.geoffreyc Cole.co.uk



PANGBOURNE PARISH COUNCIL

Tel: 0118 9841118 Email: clerk@pangbourne-pc.gov.uk Website: www.pangbourne-pc.gov.uk

PANGBOURNE PARISH COUNCIL PRECEPT 2021-22

THE IMPACT OF COVID-19

2020/21 Financial Year saw significant pressures on Parish Council finances due to the closure of Pangbourne Village Hall for most of the year and increased costs associated with additional visitors to our green open spaces. Many fixed costs remained despite lockdowns and closures and the Council received only limited financial support in the form of grants.

When setting the budget, it was not certain when the hall would be able to return to normal and so some allowance has needed to be made in the budget. We continue to see huge increases in the numbers of visitors to the parish with this putting additional strain on Council Finances.



YOUR COUNCIL TAX PRECEPT EXPLAINED

What is a Precept?

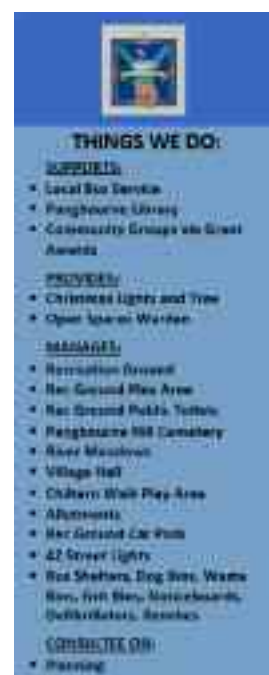
The primary source of income for most Parish Councils comes from the Precept which is a small proportion of the local Council Tax raised specifically for the Parish Council and which pays for the Council's running costs and the services it provides.

How is it Calculated?

The Precept is the difference between the Budget set for the year and any other income the Parish Council receives, for example income from hire of the Village Hall. It is then calculated as an amount per property and added to the Council Tax Bill of all the dwellings within the Parish area.

How is it Raised?

West Berkshire Council collects your Council Tax on behalf of the West Berkshire Council, the Police, Fire and the precepts for any Parish/Town Councils in their district. It is important to note that Pangbourne Parish Council's precept is just a small percentage of your overall Council Tax Bill.



How Much is it?

Due to the pressures of the last year, which has seen the hall closed for most of that time, there is an increase in the precept charge to Pangbourne residents this year. From April 2021, the cost per average household (Band D property) will increase by 11p per week or £5.89 in total to £78.14 per year. Our total Budget for 2021/2022 amounts to £291,341, however using some of our reserves and CIL Funding we can reduce our Precept requirement to £124,514. This figure is divided by the Council Tax Base to arrive at £78.14 per Band D property or £1.50 per week.

How is it Spent?

Your precept is spent on maintaining the provision of all facilities and services the Parish Council offers as well as investment and improvements to infrastructure

PARISH COUNCIL BYELAWS

PROPOSED REVISION OF BYELAWS

The Parish Council (PPC) is proposing to revise the Byelaws which cover the Open Spaces owned by the Council – River Meadow (excluding area owned by National Trust), Recreation Ground and Chiltern Walk Play Area. The current Byelaws came into force in 1999 and are found on Noticeboards in these areas and can also be found on the PPC website <https://www.pangbourne-pc.gov.uk>. The proposed Byelaws are very similar but have some new clauses relating to control of dogs, fishing and the flying of unmanned 'aircraft'. As part of the process, PPC is required to consult with those who use these areas and could be affected. If you have a comment please could you email Clerk@pangbourne-pc.gov.uk or write to: Clerk to Pangbourne Parish Council, Pangbourne Village Hall, Station Road, Pangbourne, Berkshire RG8 7AN.

SUMMARY OF PROPOSED CHANGES:

Dogs

- (1) All dogs must be on the lead
- (2) If a dog fouls the ground the person with that dog must remove the fouling immediately and place it in the receptacles provided.

Fishing

No person shall in any waterway cast a net or line for the purpose of catching fish or other animals except in a designated area for fishing.

PART 6 – MODEL AIRCRAFT Interpretation of Part 6

In this Part: “model aircraft” means an unmanned aircraft which weighs not more than 7 kilograms without its fuel; “power-driven” means driven by:

- (a) the combustion of petrol vapour or other combustible substances;
- (b) jet propulsion or by means of a rocket, other than by means of a small reaction motor powered by a solid fuel pellet not exceeding 2.54 centimetres in length; or
- (c) one or more electric motors or by compressed gas. “radio control” means control by a radio signal from a wireless transmitter or similar device.

General prohibition

No person shall cause any power-driven model aircraft to:

- (a) take off or otherwise be released for flight or control the flight of such an aircraft in the ground; or
- (b) land in the ground without reasonable excuse.

PLANNING INSPECTORATE PUBLIC INQUIRY Saltney Mead ROW/3231731 and ROW/3231732

NOTICE OF VIRTUAL PUBLIC LOCAL INQUIRY Wildlife and Countryside Act 1981 Section 53

Monday 15th March 2021 at 10.00am

Notice is hereby given that an Inspector will be appointed by the Secretary of State for Environment, Food and Rural Affairs to determine West Berkshire District Council

1. *(Pangbourne & Purley-on-Thames, Saltney Mead Public Footpath) Definitive Map Modification Order 2019 and*
2. *(Purley-on-Thames, Springs Farm Public Footpath) Definitive Map Modification Order 2019*

The Planning Inspectorate is holding a virtual public inquiry into two Definitive Map Modification Orders (WB061 & WB062), which will add various public footpaths to the West Berkshire Definitive Map and Statement of public rights of way if confirmed, as shown in each order. This will be done by means of Microsoft Teams. It is scheduled to run for up to three days.

If you are interested in attending then you will need to contact the Planning Inspectorate to register in advance (details at the bottom of the attached notice).

Use Planning Inspectorate Reference: ROW/3231731 & ROW/3231732.

For more information about the process see:

<https://www.gov.uk/government/publications/planning-inspectorate-virtual-events-guide-to-participating>

The effect of the Orders, if confirmed without modifications, will be by adding to it the following sections of public footpath 2.5 metres wide, as shown on the Order plan.

1. **Public Footpath Pangbourne 24** running from point C1 (Grid Reference 464569 176892) on the Pangbourne/Purley-on-Thames parish boundary in a generally north-westerly direction for 285 metres to point F (Grid Reference 464341 177060) via points C2 (Grid Reference 464450 176992) and F1 (Grid Reference 464363 177046).
Public Footpath Pangbourne 24a running from point C2 (Grid Reference 464450 176992) in a west-south-westerly direction for 200 metres to point E1 (Grid Reference 464254 176940) and then in a generally north-westerly direction for 64 metres to point E (Grid Reference 464201 176973).
Public Footpath Purley-on-Thames 14 running from point C (Grid Reference 464587 176872) in a generally north-westerly direction for 28 metres to point C1 (Grid Reference 464569 176892) on the Pangbourne/Purley-on-Thames parish boundary.
2. **Public Footpath Purley-on-Thames 15** running from point A (Grid Reference 464900 176644) in a generally northerly direction for 168 metres to point A1 (Grid Reference 464871 176810) and then in a generally westerly direction for 358 metres to point B (Grid Reference 464515 176773) via point A2 (Grid Reference 464626 176784)
Public Footpath Purley-on-Thames 15a running from point A2 (Grid Reference 464626 176784) in a north-north-westerly direction for 92 metres to point C (Grid Reference 464588 176868)

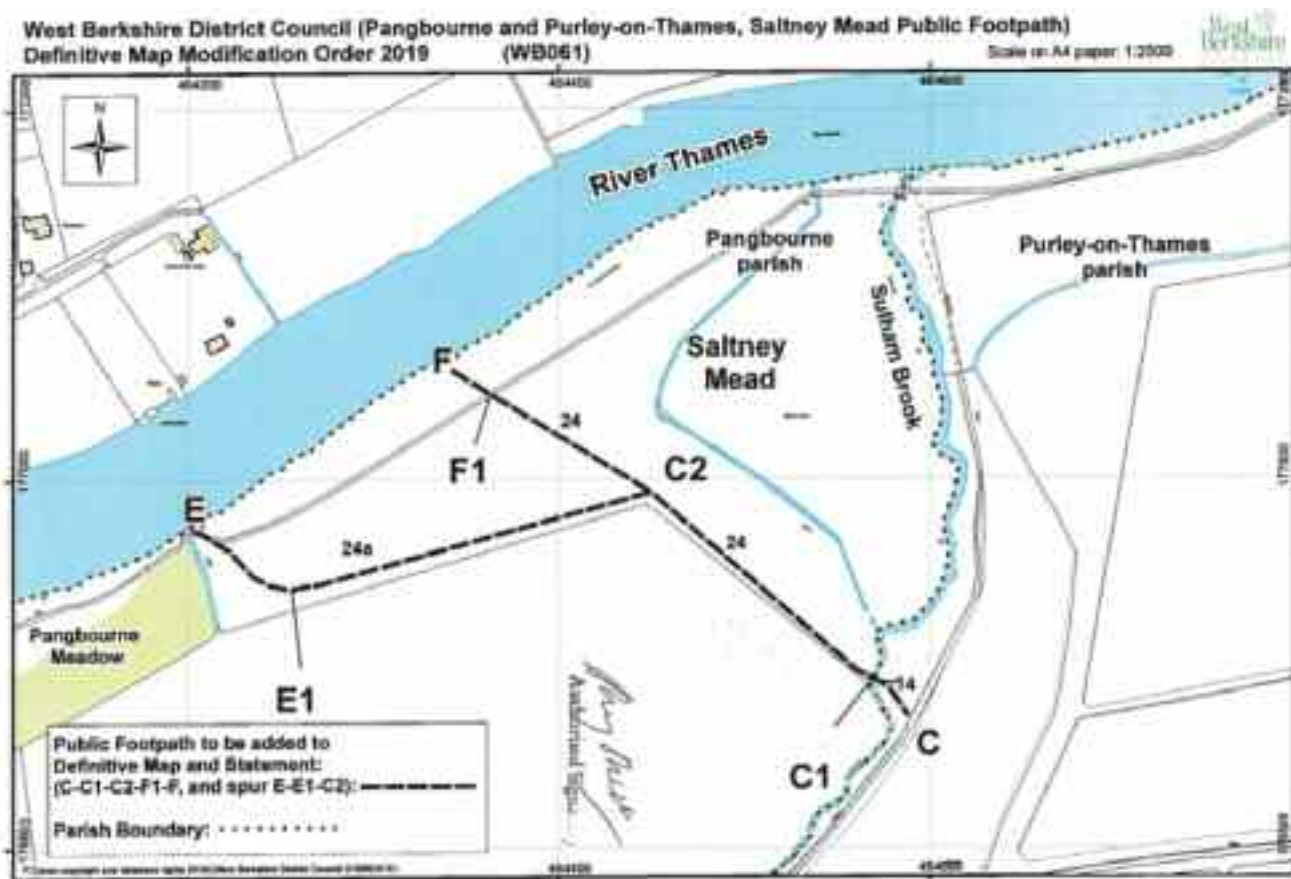
COUNCIL NEWS

Any person wishing to view the statements of case and other documents relating to the Orders may do so by appointment at West Berkshire Council Offices, Market Street, Newbury, RG14 5LD. Contact Stuart Higgins at Tel: 01635 503251 or stuart.higgins@westberks.gov.uk. **Due to the Covid-19 crisis, you are advised to make contact with the Council in case alternative arrangements need to be made.**

Planning Inspectorate Reference: ROW/3231731 & ROW/3231732

Contact point at the Planning Inspectorate: Clive Richards, Rights of Way Section, Room 3/A, Eagle Wing, Temple Quay House, 2 The Square, Temple Quay, Bristol BS1 6PN.

Tel: 0303 444 5502 Email: clive.richards@planninginspectorate.gov.uk



RECENT FLOODING

With the recent high water levels in the River Pang, Sulham Brook and Thames of late, it is perhaps timely to republish the information below regarding flooding. Please do make sure that you are prepared for possible flooding if you live in an area of the village at increased risk.

Firstly, check whether your property is on the Environment Agency Flood Map in a flood risk area. To do this go to <https://www.gov.uk/check-flood-risk>. The next step is to register for advance flood warnings:

Register with the Environment Agency Floodline Direct Service – 0345 988 1188



This is the most important thing you can do. The Environment Agency will send you a warning message by text, email or phone call (your choice) if the local river that affects you has risen to a level where flooding may happen. **ADVANCE WARNING** is your best defence. It gives you time to take steps to minimise your risk. There are three warning levels:



- **Ensure you have your own Flood Protection** available. This should include your own sand bags, flood bags or similar (compost bags), heavy duty plastic to put behind them (they are pretty ineffective otherwise) and air brick covers as a basic minimum. They are relatively inexpensive and usually quick to fix in place. We have also come across **Floodsax** which are compacted lightweight bags filled with water absorbing granules. Easy to store until needed and can be emptied out onto the garden after use as the granules are biodegradable. These can be purchased on line.
 - Please note that **West Berkshire Council (WBC)** and **Pangbourne Parish Council, DO NOT provide sandbags.** Sandbags are only provided by WBC in exceptional circumstances to protect public buildings and to help the vulnerable who cannot help themselves. Any sandbags held by the Parish Council are designed to be used to protect a strategic area to reduce flood risk for a number of houses – **not for individual property protection.**
 - You also need to have your own flood protection available for your use **prior to a flood situation.** If you leave it until the property is at risk you may be too late or find that the suppliers have no stock. Please be aware that sandbags will not provide any protection if flood water comes up through the floors of your house.
- For more information on **FLOOD PROTECTION** products, look on the blue pages on the website of the **National Flood Forum: www.floodforum.org.uk.**
- **Make a Personal Flood Plan.** Keep a list of all your important contact numbers eg Insurance, Gas, Electricity, plus friends and family. Know how to turn off your Gas, Electricity and Water supply at the mains and where the stop cocks are located. Prepare a **Flood Kit** of basic essential items such as a torch, copies of your insurance documents, wind up or battery radio, bottled water, first aid kit and warm blankets/waterproof clothing. Keep a copy of the Environment Agency booklet *What To Do Before, During And After A Flood* with your Flood Kit. It has lots of useful information in it. (<https://www.gov.uk/government/publications/flooding-what-to-do-before-during-and-after-a-flood>)

SUPERFAST BROADBAND

Slow broadband speeds? If so, you could benefit from the Rural Gigabit Voucher scheme. Eligible residents can access funding up to £1,500 & businesses up to £3,500 towards the cost of full fibre installation. Find out more here: <http://www.superfastberkshire.org.uk/article/37722/Gigabit-Broadband-Voucher-Scheme>. #GigabitVoucher

GIGABIT BROADBAND VOUCHER SCHEME

Step-by-Step guide to applying

- Check your eligibility by using the postcode check on the government's Gigabit Voucher Scheme. A list of suppliers that are active in your area will be shown.
- You will need to apply as a group. Join up with other nearby residents (at least you and one other neighbour) and nominate a community lead.
- Contact your chosen supplier who will provide you with a quote, make the application for the vouchers on your behalf and guide you through the process.
- Once your application has been received the Gigabit Voucher Scheme team will email you to make sure you want to go ahead. If your project costs more than £1,500 per property (up to £3,000) for a small to medium business) you will have to pay the remaining money if you wish to continue.
- Your supplier starts building your community's new broadband network.
- Choose an internet service provider once the network has been built, and purchase a superfast broadband package to get connected and validate your voucher.

COUNCIL NEWS

Eligibility

- Applicants must be in a rural area (as classified by DeFRA)
- Only group projects are allowed (a group being 2 or residents).
- Applicants must have current internet speeds below 100Mbps and not currently be gigabit capable

Funding Available

- Up to £1,500 is available per residential premises & £3,500 for small to medium businesses.
- The voucher is to support the cost of installing new gigabit-capable connections only
- You must commit to a 12-month contract with your supplier for download speeds of at least 30 Mbps through a gigabit capable connection to get the funding



PANGBOURNE PARISH COUNCIL

Parish Office, Pangbourne Village Hall, Station Road, Pangbourne, Berks RG8 7AN
Tel: 0118 984 1118 Email: clerk@pangbourne-pc.gov.uk Web: www.pangbourne-pc.gov.uk

VACANCY FOR COUNCILLOR

IF YOU CARE ABOUT WHERE YOU LIVE AND ARE PASSIONATE
ABOUT YOUR COMMUNITY, WE NEED YOU.

JOIN US AND MAKE A LOCAL CHANGE.



There are currently vacancies for
Councillors on Pangbourne Parish Council.

The Parish Council:

- Comprises 11 Councillors
- Meets on the second Tuesday of every month (excl Aug)

*There is a real opportunity to make
a difference at a very local level!*

Applications are welcomed.

If you are interested in becoming a parish councillor or would like more information,
please contact the Clerk via the contact info given above.

PLANNING APPLICATIONS REVIEWED BY THE PARISH COUNCIL SINCE LAST ARTICLE

APP NO:	PROPOSAL	RECOMMENDATION
20/02841/ ADV	New vitrine screens in the screens in the windows of the southern and west elevations. Strutt and Parker, 1 High Street, Pangbourne RG8 7AE	NO OBJECTION
20/03048/ HOUSE	Construction of new gazebo. Highfield, Flowers Hill, Pangbourne RG8 7BD	NO OBJECTION
20/02240/ HOUSE	Demolition of existing garage and new detached out building. New rooflights to the rear. Revised Drawings. Blue Daws, Pangbourne Hill RG8 7AS	NO COMMENT
21/00067/ HOUSE	Renovation of dwelling house: First floor extension over garage to form guest suite. Ground floor rear extension to kitchen. New windows throughout, aluminium framed, double glazed. Additional weatherboard-style panels to walls on first floor. Roof retiled. New, larger balcony to east facade of first floor. Bere Court Farm, Bere Court, Pangbourne RG8 8HT	NO OBJECTION
21/00042/ HOUSE	Single Storey extension to flank of property. 153 Bourne Road, Pangbourne RG8 7JT	NO OBJECTION
21/00215/ HOUSE	Two storey front extension over and adjacent to the existing garage; further two storey extension to include first floor dormer window; single storey front porch extension; Single storey rear extension to include re-roofing of the existing to match; Insertion of 2No rooflights into the rear pitch of the main roof; internal alterations as indicated. 9 St James Close, Pangbourne RG8 7AP	NO OBJECTION
20/02898/ FULD Neighbouring Parish	Conversion of buildings (Tudor house annex and pump house) to form 3no. independent dwellings (1 x two bed, 1 x three bed and 1 x four bed) to include single storey extensions and 2no side roof dormers to existing annex and two storey extension to former pump house. Section 73A application to vary Condition 2 (approved plans) of planning permission reference 18/01102/FULD. Tudor House, Maidenhatch, Pangbourne RG8 8HP	NO OBJECTION
21/00049/ HOUSE Neighbouring Parish	Demolition of conservatory. Construction of two storey and single rear extension. Formation of front storm porch and new entrance door. Addition of conservation rooflight in front elevation. Maidenhatch Lodge, Maidenhatch, Pangbourne RG8 8HH	NO OBJECTION

APPLICATIONS DETERMINED BY WEST BERKSHIRE COUNCIL:

20/02539/ HOUSE	Extension to side and rear 40 Horseshoe Road, Pangbourne RG8 7JH	APPROVAL
20/02502/ TPW	Ash - Reduce crown by 3-4m to appropriate growth points, leaving the tree with a good balanced crown; light crown thin of 10% by removing epicormic growth of no larger than 15mm. Walnut - Reduce crown by 2-3m to appropriate growth points, leaving the tree with a balanced crown; crown lift to 3-4m to appropriate growth points. Cedar - To reshape the crown by reducing long lateral branches by 3-4m. 11 St James Close, Pangbourne RG8 7AP	APPROVAL

APP NO:	PROPOSAL	WBC DECISION
20/02740/TPC	T2 Weeping Willow - Fell to ground level. In decline. T3 and T4 Leyland Cypress - Fell to ground level. Too close to property. T5 Robinia Pseudoacacia - Fell to ground level. In irreversible decline and nearing the end of its safe useful life expectancy. 3 The Moors, Pangbourne RG8 7LP	APPROVAL
20/02329 /FULD	Section 73 - Application to vary Conditions 2 (approved plans), 3 (materials), 4 (construction method statement) and 7 (drainage) of planning permission 20/01046/FULD - 5 Bedroom detached dwelling, detached garage and hardstanding. Former Camden Ridge, Riverview Road, Pangbourne	APPROVAL
20/02154/ HOUSE	Internal and external alterations to existing garage outbuilding, and erection of lean-to greenhouse extension (resubmission of Planning Permission No. 17/01768/HOUSE). Use of part of ground floor for residential purposes ancillary to the main dwelling. Courtlands, Tidmarsh Road, RG8 7AY	REFUSAL
20/00933/ HOUSE	Section 73: Variation of condition 2-approved plans of previously approved application 19/02308/HOUSE: First floor extension over existing flat roof and dormer window to attic 68 Horseshoe Road, Pangbourne RG8 7JL	APPROVAL
20/02240/ HOUSE	Demolition of existing garage and new detached out building. New rooflights to the rear and single storey rear extension. Blue Daws, Pangbourne Hill RG8 7AS	APPROVAL
20/03072/TPW	T1 - LARCH - Dead tree, remove to ground level. T2 and T3 - LARCH - Moribund trees. Extensive die back throughout their crowns. 61 Shooters Hill, Pangbourne RG8 7EA	APPROVAL
20/02658/TPW	T1 and T2 - Oak - approximate 2m tip reduction (esp S and W quadrants) for safety purposes. Muirwood, Green Lane, Pangbourne RG8 7BG	APPROVAL
20/02329/ FULD	Section 73 - Application to vary Conditions 2 (approved plans), 3 (materials), 4 (construction method statement) and 7 (drainage) of planning permission 20/01046/FULD - 5 Bedroom detached dwelling, detached garage and hardstanding. Former Camden Ridge, Riverview Road, Pangbourne	APPROVAL
20/02947/TPW	T1 Sycamore - Remove Ivy from the branches and main stem. Selectively prune to give 2m clearance to the property. Lift the crown to a height above ground level of 5.5m by removing secondary and tertiary growth. 9A Shooters Hill, Pangbourne RG8 7DZ	APPROVAL
21/00091/ NONMAT	Non material amendment to approved 19/02826/HOUSE -Garage conversion, new pergola and replacement driveway. Amendment - Amend flat roof to pitched roof. Current height approved is 2.2m. Proposal is to increase this by 30cm to 2.5m. No changes to location of building or the area it would cover. No change to materials - all timber construction 24 Horseshoe Road, Pangbourne RG8 7JQ	APPROVAL
20/03001/ COND2	Application for approval of details reserved by condition 3 (Schedule of works) of approved 20/01534/LBC2 - Changes to Gutter area of Link Building to create new deeper gutter along line of Servants wing and to replace lead in gutter with Saranfil. Bere Court, Bere Court, Pangbourne RG8 8HT	APPROVAL

PAULBELCHER
PROPERTY SERVICES OF PANGBOURNE
 T 01189843722 M 07888680834
 paulbelcherpropertyservices@yahoo.co.uk

**ALL INTERIOR & EXTERIOR WORK UNDERTAKEN
 AND COMPLETED TO A HIGH STANDARD
 CALL OR EMAIL FOR FREE INDEPENDENT ADVICE
 AND A NO OBLIGATION QUOTE
 ALL WORK FULLY INSURED - NO JOB TOO SMALL**

FAMILY TREE
 GROUNDS MAINTENANCE AND CONSTRUCTION
 Garden Maintenance

- Fencing • Gates • Hedge cutting
- Decking • Patios • Grass cutting

TEL. 07736 650 477
 email.familytreegmc@gmail.com

**Plant & tool hire for
trade & DIY.**

Your first choice for the best
equipment, service and price.
Go to www.didcotplant.co.uk to
check our online catalogue.



DIDCOT PLANT
 PLANT AND TOOL HIRE FOR TRADE & D.I.Y.
www.didcotplant.co.uk
01235 814000

MADE TO MEASURE
*Curtains, Roman Blinds,
Cushions Covers, etc
at competitive prices.*

Call Caroline on
 (0118) 9542448
 or 07815 610 007

Aylett Electrical



Kevin Aylett – your local,
reliable, registered and
insured electrician.

- Domestic installations
- Testing and repair
- Free quotes and advice
- All maintenance and repairs undertaken

Blossomsend Cottage Blossom Lane Theale RG7 5BE
 Tel: 0118 9302037 Mob: 07986 033 051



LINDSAYS

- CLEARANCE & RECYCLING
- REMOVALS & STORAGE

- Commercial clearances • Domestic clearances
- Man and van services • Garden clearances
- Sheds demolished • Attic clearances
- Fully licensed waste carrier
- Honest and reliable

Serving domestic and business customers
across Berkshire and the surrounding villages –
from single items to full house clearance.

Get in touch for a FREE QUOTE

0118 9019935 or 07889 851 600
lindsaysclearance@outlook.com
 @lindsaysclearance

Plumber & Bathroom fitter

From Dripping Taps to Complete Bathroom Design and Installation.

Full Quality Refit, all Tiling, Construction, Alterations etc, from start to finish.

**Free Advice and Quotes.
Friendly, Reliable and Insured.**

**Happy to undertake
the smallest of jobs**

**Richard – 0771 333 6661
or 0118 9676384**
(answering machine)

Cleaver Cars Ltd

Independent Citroën Specialist

♦
Servicing, repairs and MOTs
All makes and models

♦
Free local collection
and delivery service

♦
Tel. 0118 957 6405

67 Loverock Road
Reading, RG30 1DZ

Email: cleavercars@btconnect.com
www.cleavercars-reading.co.uk

Monumental & Masonry Craftsmen

Family run business since 1858

A.F. JONES
33 Bedford Road
Reading
RG1 7EX

Tel: 0118 9573537
email
info@afjones.co.uk

E.T. SHEPPARD
36 Reading Road
Henley on Thames
RG9 1AG

Tel: 01491 574644
email
info@etsheppard.co.uk

**Specialists in all stonework
Memorials, Restoration, Kitchens, Bathrooms**

HFAC LIMITED ROOFERS & DAMP PROOFING SOLUTIONS

HIGH-QUALITY ROOFING SERVICES

- Flat roofing specialists
- Chimneys
- Insulation
- Budget roof repairs
- Fascias, soffits and guttering
- Repointing
- Painting
- Plastering
- Rendering
- Carpentry
- Guttering replacements
- Gutter Cleaning
- All damp proof solutions
- All lead dressing
- Roof moss removal
- 24 hour drain clearing and blockages
- Cast iron guttering
- OAP 10% discount
- 30 year guarantee

Good Quality is Soon Forgotten

5*** GOOGLE REVIEWS**



Call us on:

01491 876446 • 07425 790635

Email: hfactd@gmail.com

Chiltern House, 45 Station Road, Henley-on-Thames, Oxon, RG9 1AT

PICTURE FRAMING PICTURE RESTORATION

R. G. Bridgewater

(established in the trade since 1956,
apprenticed at Reading Fine Art Gallery,
also with Picture Crafts of London Street, Reading)

- Oils and pastels restored
- Watercolours, engravings, prints de-foxed and cleaned
- Conservation mounting and framing
- All aspects of framing undertaken (tapestries, silks, butterflies, medals, etc)

Tel: 0118 984 4622

USEFUL NUMBERS

USEFUL NUMBERS

POLICE	Non-emergency number	101
CRIMESTOPPERS		0800 555 111
PANGBOURNE PARISH COUNCIL (at Village Hall)		
	www.pangbourne-pc.gov.uk	0118 984 1118
	Parish Office opening hours – Mon am, Tues am, Thurs pm	
CHAIRMAN OF PANGBOURNE PARISH COUNCIL		
	Peter MacIver – peterpangbourne@gmail.com	07768 004844
VICE CHAIRMAN OF PANGBOURNE PARISH COUNCIL		
	John Higgs – jhiggs@pangbourne-pc.gov.uk	0118 984 4758
CLERK TO PANGBOURNE PARISH COUNCIL		
	Becky Elkin – clerk@pangbourne-pc.gov.uk	0118 984 1118
WEST BERKSHIRE COUNCIL		
	Switchboard	01635 551111
CITIZENS ADVICE BUREAU		01635 516 605
MP FOR READING WEST		
	Alok Sharma.	0118 941 3803
SURGERY		0118 984 2234
	Emergency out-of-hours (6.30pm – 8am)	111
PHARMACY		0118 984 2935
LIBRARY		0118 984 4117
PANGBOURNE AND DISTRICT VOLUNTEER CENTRE		0118 984 4586
	Office closed until further notice due to Covid19 restrictions.	
PANGBOURNE PARISH PRIEST		
	Reverend Heather Parbury – rector@pangbournechurches.info	0118 984 2928
FLOOD WARDENS		
	Kay Lacey	07889 231136
	Stephen Billyeald	0118 984 3368

SUBMISSION OF ARTICLES* AND ADVERTS†

	COPY DEADLINE	DISTRIBUTED
Issue 162 – May/June	9th April	29th April
Issue 163 – July/August	4th June	24th June
Issue 164 – September/October	6th August	26th August

Please send all submissions to pangbourne@heraldgraphics.co.uk.
Please bear in mind the distribution date when including dates in your articles.
(*receipt of an article is not a guarantee of inclusion; †payment is required in full prior to publication)

CLASSIFIEDS

ELECTRICIANS

Aylett Electrical

Kevin Aylett – your local, reliable, fully qualified and insured, domestic electrician.

0118 9302037

Mob: 07986 033 051

FUNERAL SERVICES

A B Walker

See main advert
on page 34.

Thatcham – 01635 873672

Tilehurst – 0118 304 0068

Reading – 0118 957 3650

GARDEN SERVICES

Gardens by Ross Agar

Design and maintenance.

0118 971 2340

0793 948 5919

MOLES? Are they ruining your lawn?

Call MoleMan Mark to get rid of them.

British Mole Catchers Register accredited.

07887 480014

JEWELLERY REPAIRS

Sandy Ebdon-Jackson B.A.

Re-stringing, re-designing, replacing lost parts etc.

Please message description and photo of required repair for quote.

07789 238557

LAUNDRY/DRY CLEANERS

Launderclean

4 Station Road, Pangbourne.

Launderette and dry cleaners.

0118 984 2197

PAINTER

Andy The Painter

Interior and Exterior Painting.

Fully Qualified and Insured.

07933 266874

andyblack007@outlook.com

PET CARE

Purley Pet Care

Pet boarding, walking and feeding for happy paws and waggy tails. Fully licenced and insured. Boarding or day care. Big animals or small. References available on request. Call Joan.

07867 676675

joanjack@sky.com

PLUMBER & BATHROOM FITTER

Happy to undertake the smallest of jobs.

Call Richard.

0771 333 6661

0118 967 6384

PROPERTY MAINTENANCE

Duncan Agar

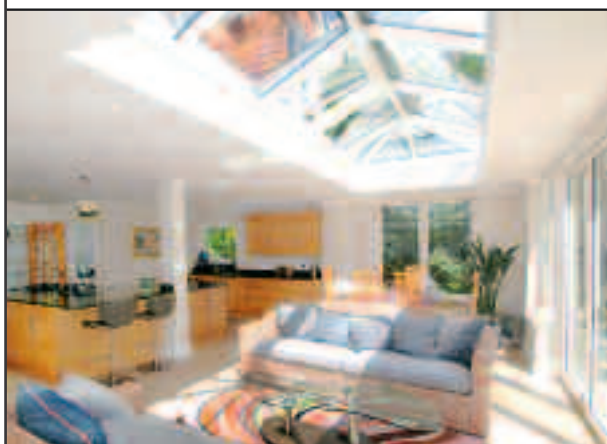
All aspects of maintenance including gutter cleaning and repairs, broken glass, painting, etc.

0118 9712340

07787 552983



individual
conservatories
and orangeries
by **Malbrook**



please contact us to arrange a design consultation

TEL: 020 8780 5522 • EMAIL: info@malbrook.co.uk

www.malbrook.co.uk

TRADITIONAL BRITISH VALUES

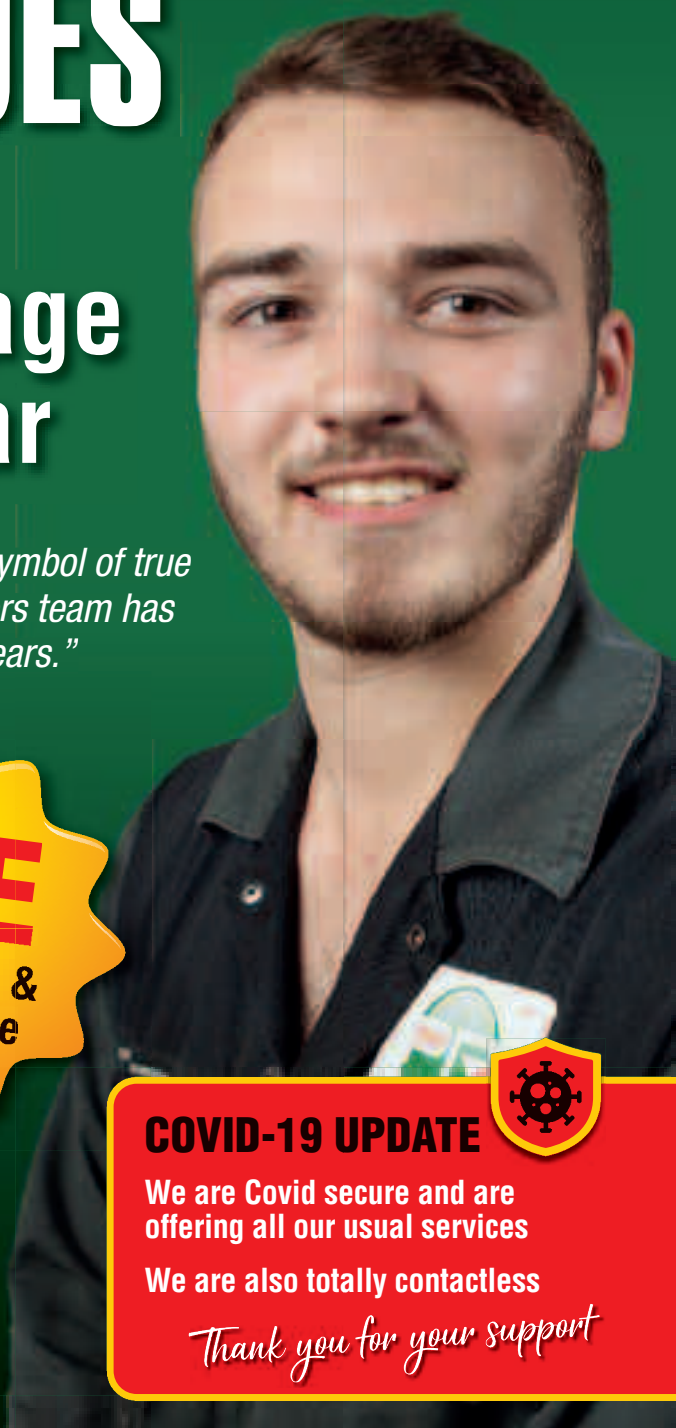
Tidmarsh RG8 8HG

We provide all garage services for your car

"Alec Issigonis invented the Mini in 1959. It became a symbol of true Britishness, trustworthiness and reliability. Our PR Motors team has been applying the same important values for over 30 years."



JASON, Technician at PR Motors



COVID-19 UPDATE

We are Covid secure and are offering all our usual services

We are also totally contactless

Thank you for your support

Email: enquiries@prmotors.biz Web: prmotors.biz

Tel: **0118 984 4889**



Opening times: **Mon-Fri: 7:30am - 5:30pm**