

Mouse Anti-Cytokeratin 10 [LH2]: MC0737, MC0737RTU7

Intended Use: For Research Use Only

Description: Cytokeratin 10 (CK10) is an intermediate filament protein and typically associated with cytokeratin 1 (CK1). CK 10 is expressed in the suprabasal cell layers of certain stratified epithelia, notably epidermis. CK10 has been used as a marker of epidermal differentiation. Antibody against CK10 is helpful in the identification of more differentiated squamous cell carcinomas.

Specifications:

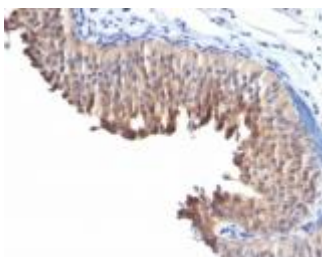
Clone: LH2
Source: Mouse
Isotype: IgG1k
Reactivity: Human, mouse
Localization: Cytoplasm
Formulation: Antibody in PBS pH7.4, containing BSA and $\leq 0.09\%$ sodium azide (NaN₃)
Storage: Store at 2°- 8°C
Applications: IHC, Flow Cyt., IF
Package:

Description	Catalog No.	Size
Cytokeratin 10 Concentrated	MC0737	1 ml
Cytokeratin 10 Prediluted	MC0737RTU7	7 ml

IHC Procedure*:

Positive Control Tissue: Skin, SqCC
Concentrated Dilution: 100-500
Pretreatment: Citrate pH6.0, 15 minutes using Pressure Cooker, or 30-60 minutes using water bath at 95°-99°C
Incubation Time and Temp: 30-60 minutes @ RT
Detection: Refer to the detection system manual

* Result should be confirmed by an established diagnostic procedure.



FFPE human bladder carcinoma stained with anti-CK10 using DAB

References:

1. p120-catenin down-regulation and epidermal growth factor receptor overexpression results in a transformed epithelium that mimics esophageal squamous cell carcinoma. Lehman HL, et al. Am J Pathol 185:240-51, 2015.
2. Deletion of mouse Porcn blocks Wnt ligand secretion and reveals an ectodermal etiology of human focal dermal hypoplasia/Goltz syndrome. Barrott JJ, et al. Proc Natl Acad Sci U S A 108:12752-7, 2011.
3. Out of balance: consequences of a partial keratin 10 knockout. Reichelt J, et al. J Cell Sci 110 (Pt 18):2175-86, 1997.

Doc. 100-MC0737
Rev. A