

Good morning!

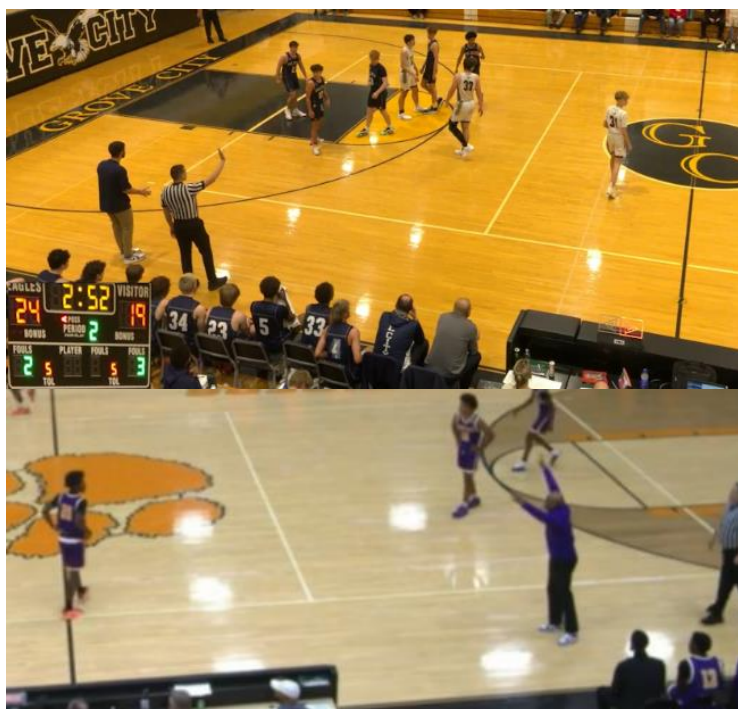
Points of emphasis are just that, situations we are supposed to place emphasis on.

Coach on the Floor

Rule 10-5 delineates the privileges and restrictions for head coaches and bench personnel. Only the head coach is permitted to stand and provide instructions to players during live ball play. This communication must be carried out in a professional and sportsmanlike manner. All other personnel, including assistant coaches and team members not actively participating in play, must remain seated except during rule-allowed situations (e.g., during time-outs or spontaneous reactions to exceptional play).

This emphasis seeks not to restrict enthusiasm but to preserve order and promote respect for the game. Adherence to coaching box boundaries is essential to maintaining safety and fairness. An increasing number of incidents have been observed involving coaches stepping onto the court during live play. Such behavior introduces potential safety concerns and must be addressed through rule enforcement.

This clearly states that we are to 'adhere to coaching box boundaries...'. **WE MUST DO THIS!** If it happens one game and not the next, there is zero consistency. Allowing a coach to be out of the coaching box 'because he/she is coaching his/her team' or 'he/she was just getting a water bottle off the scorer's table' or 'he/she was calling out a play and stepping out onto the court' are not valid excuses. We ALL must be enforcing the boundaries.



BOTH of these above coaches on the floor need addressed. The top one most likely a warning (recorded in the book) and the bottom one more than a warning. TALK about the coaching box in your pregame conference and do not be afraid to mention it in the captain's meeting when you point out the coaching box boundaries.

Do not be afraid to move the chairs back so the coach HAS room to walk or if that is impossible, slide all the chairs down so that the coach has room between the between the chairs for the team and the end of the coaching box closest the table.

Monday extra: There has been confusion at the least and plain being wrong at most in regards to the mechanic for a player control and an illegal screen. The mechanic for each is *the same*. There is no 'punch' for a team control foul (e.g. illegal screen) anymore! The correct mechanic is:

- Player Control – Whistle/Fist Up, Hand behind head, and POINT (no fist)
- Illegal Screen – Whistle/Fist Up, Hand behind head, and POINT (no fist)

Have a great game tonight!