



World leader in flexible space management.

OPERABLE, VERTICAL LIFT & ACCORDION PARTITIONS

# VINYL COLOR SELECTOR



The vinyl patterns and colors shown in this selector are included in the price of Hufcor Operable, Vertical Lift and Accordion partitions which are manufactured in the United States.





HUF COR STANDARD  
VINYL WALLCOVERINGS,  
MANUFACTURED BY  
OMNOVA SOLUTIONS,  
ARE MAS CERTIFIED  
GREEN® FOR THEIR  
LOW VOC EMISSIONS.



## A word about vinyl and the environment.

The wallcoverings industry is carefully monitored by various government agencies, including OSHA and Congress, to ensure that the product's manufacture, installment and use are safe for the environment. Hufcor's wallcoverings are manufactured without heavy metals including lead, mercury, chromium or cadmium that could adversely affect the environment.

The primary raw material in vinyl resin comes from common salt, which is in abundant supply. This means that vinyl is less reliant on petroleum resources than other plastics. The vinyl manufacturing process is highly efficient – more than 99 percent of all vinyl produced ends up in a finished product.

Hufcor's standard vinyl wallcoverings, manufactured by OMNOVA Solutions, are compliant with the performance standards established for low-emitting wallcovering by California Department of Public Health (CDPH) in classroom and office settings, and are compliant with the California Collaborative for High Performance Schools (CHPS) and the LEED for Schools programs. Qualified project uses of this vinyl wallcovering may be eligible for CHPS and LEED credits under their respective Ceiling and Wall Systems Programs.

Wallcoverings are designed to meet applicable regulations and standards and are tested in an outside third party laboratory for flame spread and smoke levels.

Vinyl wallcoverings are more resistant to scratching and tearing than alternate coverings. Typically, vinyl wallcoverings last three to five times longer than other surface treatments.

Additional technical information may be found on our website, [www.hufcor.com](http://www.hufcor.com).





# VINYL COLORS

FOR OPERABLE, VERTICAL LIFT & ACCORDION PARTITIONS

**BAXTER PATTERN** *NOT recommended for use on a tackable surface. Tack holes will become visible over time. Pattern is a random match.*



44-534  
Stone

44-532  
Cream

44-535  
Seafoam

44-533  
Lemon Grass

44-536  
Brown

**FUSION PATTERN** *NOT recommended for use on a tackable surface. Tack holes will become visible over time.*



44-537  
White

44-538  
Light Grey

44-539  
Beige

44-540  
Silver & Gold

44-541  
Silver Grass

**KAMAKURA PATTERN** *NOT recommended for use on a tackable surface. Tack holes will become visible over time. Pattern is a random match.*



44-542  
Ghost Ship

44-543  
Sand

44-546  
Rowboat

44-544  
Beehive

44-545  
Everglades

Actual color provided may vary from swatch shown due to dye lot variations. Room lighting may also change the color's appearance. Effort has been made to accurately represent the vinyl colors, yet colors on your monitor may not accurately represent the swatch due to variation in monitor calibration.



**HIGHLAND PATTERN** *Recommended for use on a tackable surface. The embossed surface helps to conceal pin holes. Pattern is a random match.*

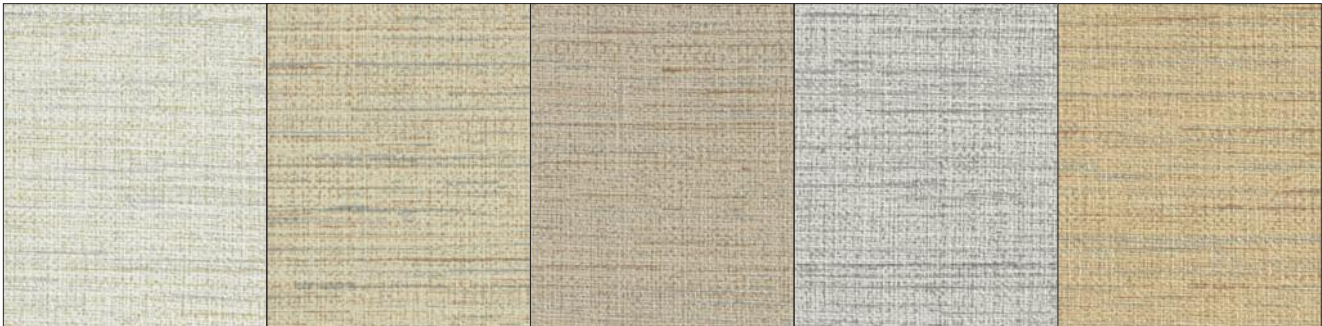


44-237 Cloud      44-231 White Rice      44-274 Dover      44-236 Beach      44-218 Coffee Cream



44-527 Truffle      44-528 Craft      44-227 Stone      44-526 Washed      44-525 Laurel

**ASIAN LINEN PATTERN** *NOT recommended for use on a tackable surface. Tack holes will become visible over time.*



44-501 Alabaster      44-505 Parchment      44-502 Berber      44-503 Grey      44-504 Hemp



44-529 Pumpkin      44-530 Mushroom

Actual color provided may vary from swatch shown due to dye lot variations. Room lighting may also change the color's appearance. Effort has been made to accurately represent the vinyl colors, yet colors on your monitor may not accurately represent the swatch due to variation in monitor calibration.



**CAIRN PATTERN** *NOT recommended for use on a tackable surface. Tack holes will become visible over time. Pattern is a random match.*

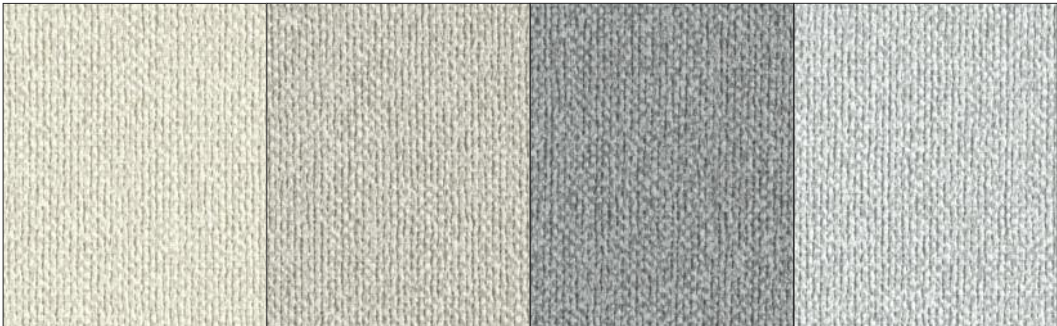


44-239  
Dover

44-242  
Beige

44-241  
Wheat

44-507  
Camouflage

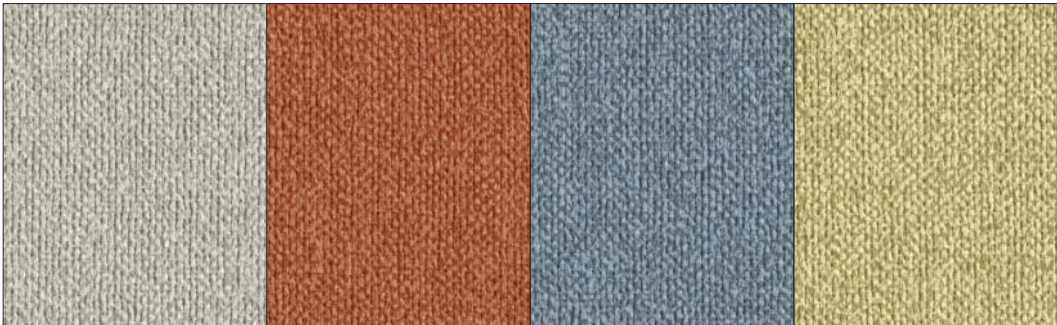


44-244  
Pearl

44-305  
Grey

44-306  
Grey Flannel

44-246  
Stone



44-520  
Cadet

44-523  
Mango

44-521  
Denim

44-522  
Limeade



44-524  
Black

**WOODTONE**

*NOT recommended  
for use on a tackable  
surface. Tack holes  
will become visible  
over time.*



44-531  
Wilshire Cherry

Actual color provided may vary from swatch shown due to dye lot variations. Room lighting may also change the color's appearance. Effort has been made to accurately represent the vinyl colors, yet colors on your monitor may not accurately represent the swatch due to variation in monitor calibration.



# SPECIFICATIONS

FOR OPERABLE, VERTICAL LIFT & ACCORDION PARTITIONS

TYPE II, CLASS A, VINYL SPECIFICATIONS	PATTERNS
	Highland, Cairn, Asian Linen, Baxter, Kamakura, Fusion, Woodtone Wilshire Cherry
Minimum Weight	20 oz./lin. yd.
Average Width	54" [1372mm]
Mildew Resistant	x
CCFA-W-101	x
CCC-W-408A & C	x
Flame Developed	20 gypsum /10 cement board
Smoke Developed	45 gypsum /20 cement board
MEA Approved N.Y. Dept of Buildings	x
NFPA 101-94 when tested by ASTM E84-91	x

## ADDITIONAL PRODUCT FEATURES

- Compliant with the performance standards established for low-emitting wallcovering by California Department of Public Health (CDPH) in classroom and office settings. Compliant with the California Collaborative for High Performance Schools (CHPS) and the LEED for Schools programs.
- Contains additives to resist mold and other micro-biological growth on the decorative surface of the product. These additives, however, will not prevent mold growth if moisture is allowed to accumulate in or behind the wall.
- PFOA free – does not contain, nor will it degrade to, Perfluoro Octanoic Acid (PFOA).
- NFPA 101 and IBC Class A interior wall finish rating when tested using ASTM-E84 method of reinforced cement board and Type X gypsum board and when tested in accordance with NFPA 286.



## CLEANING INSTRUCTIONS

Common dirt and stains may be removed from wallcovering by rubbing lightly with a moistened cloth, sponge or stiff bristle brush using a mild soap, detergent or non-abrasive cleanser. It is important that clean water be continuously used and that the material be towel dried.

CAUTION: Strong organic solvents (such as ketones) and harsh abrasive cleaners are not recommended. These materials will cause dulling, discoloration or softening of the vinyl, possibly resulting in permanent damage.

**Additional technical information may be found on our website: [www.hufcor.com](http://www.hufcor.com)**

Hufcor has a program of continuous product improvement and as a result reserves the right to improve and change products, design, and/or specifications without notice.



*World Leader in Flexible Space Management™*

P.O. Box 5591 • 2101 Kennedy Rd.

Janesville, WI USA 53547-05591

Tel: 608-756-1241 or 800-356-6968

Fax: 608-758-8253 • Email: [info@hufcor.com](mailto:info@hufcor.com)

**[www.hufcor.com](http://www.hufcor.com)**



\*USGBC and related logo is a trademark owned by the U.S. Green Building Council and is used by permission.



The quality systems of Hufcor's manufacturing facilities are registered to the ISO 9001 standards.