



One (1) Used Prolec transformer, oil filled outdoor substation type, Serial number: G1907-1, class ONAN/ONAF, three phase 60 hz. 65 °C rise, imp: 6.433 %, Manufactured 10/2006

7500/10000 KVA, copper wound

High voltage: 13800 v delta Bil 110 kv

Low voltage: 4160 Y/2400, Bil: 60 kv

Taps: 14400-14100-13800-13500-13200

Core and coils 21178 lbs.

Case 13715 lbs.

Liquid (1434) 10,773 lbs.

Total 45667 lbs.





http://www.geprolec.com

TRANSFORMER

SERIAL No G1907-011, THREE-PHASE, 60 Hz, ALTITUDE 3300 ft

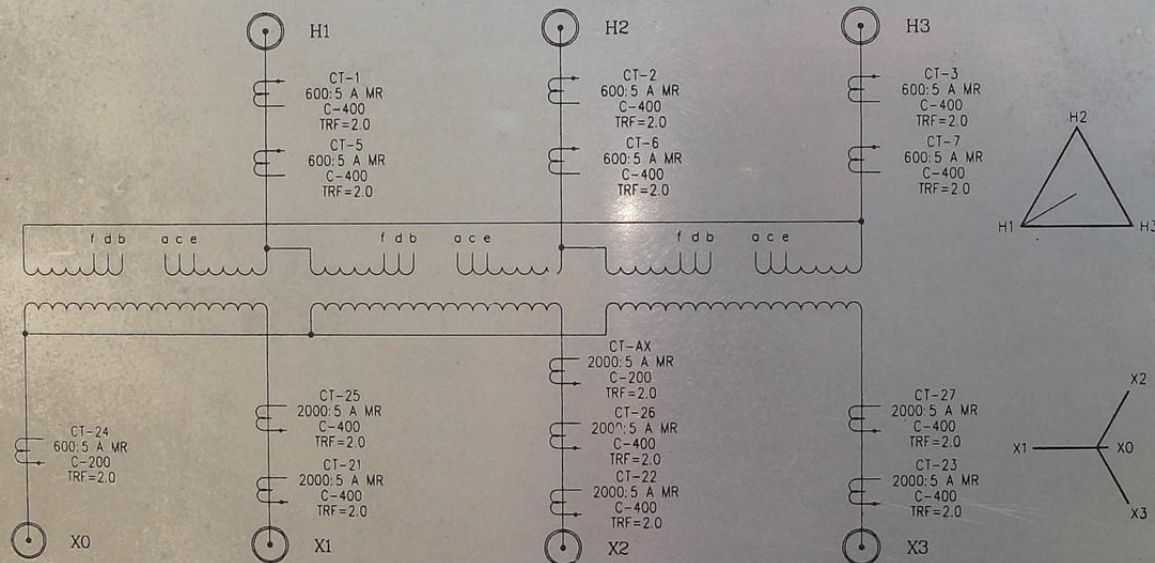
VOLTAGE RATING	13 800 - 4160 Y / 2400	
kVA RATING	7500	CONTINUOUS @ 65 °C RISE ONAN
kVA RATING	10 000	CONTINUOUS @ 65 °C RISE ONAF

BASIC IMPULSE LEVEL (kV)			
	H1,H2,H3	X1,X2,X3	X0
BUSHING	150	200	200
WINDING	110	60	60

IMPEDANCE @ 85 °C		
%Z	kVA BASE	kV BASE
3.75	7500	13.8 - 4.16

REFERENCE NUMBER
T4286

APPROXIMATE WEIGHTS (POUNDS)	
CORE AND COILS	21178
TANK AND FITTINGS	13715
MAIN TANK LIQUID (1351 GALS)	10149
COOLING EQUIPMENT LIQUID (83 GALS)	624
TOTAL WEIGHT	45667
UNTANKING WEIGHT (HEAVIEST PIECE)	21178
SHIPPING WEIGHT (WITHOUT OIL)	31480



LOW VOLTAGE WINDING	
VOLTS	AMPERES
X1, X2, X3	10 000 kVA
4160	1390

HIGH VOLTAGE WINDING			
VOLTS	AMPERES	DE-ENERGIZED TAP CHANGER	
H1, H2, H3	10 000 kVA	TAP	CONNECTS
14 400	401	1	a TO b
14 100	409	2	b TO c
13 800	418	3	c TO d
13 500	428	4	d TO e
13 200	437	5	e TO f

600.5A CT		2000.5A CT	
RATIO	TERMINALS	RATIO	TERMINALS
50:5A	x2-x3	300:5A	x3-x4
100:5A	x1-x2	400:5A	x1-x2
150:5A	x1-x3	500:5A	x4-x5
200:5A	x4-x5	800:5A	x2-x3
250:5A	x3-x4	800:5A	x3-x5
300:5A	x2-x4	1100:5A	x2-x4
400:5A	x1-x4	1200:5A	x1-x3
450:5A	x3-x5	1500:5A	x1-x4
500:5A	x2-x5	1600:5A	x2-x5
600:5A	x1-x5	2000:5A	x1-x5

NOTES

- MAXIMUM OPERATING PRESSURES OF LIQUID PRESERVATION SYSTEM. 0.5 Lbf/in² POSITIVE AND 6.5 Lbf/in² POSITIVE.
- TANK DESIGNED FOR 15 Lbf/in² VACUUM FILLING
- LIQUID LEVEL BELOW TOP SURFACE OF THE HIGHEST POINT OF THE HIGHEST MANHOLE FLANGE AT 25 °C. 17.91 in
- LIQUID LEVEL CHANGES: 0.55 in PER 10°C CHANGE IN LIQUID TEMPERATURE
- ALL WINDINGS COPPER.
- FILLED WITH MINERAL OIL WHICH CONTAIN NO DETECTABLE LEVEL OF PCB AT THE TIME OF MANUFACTURE

CAUTION !

- BEFORE INSTALLING OR OPERATING READ INSTRUCTIONS G1907
- DO NOT OPERATE TRANSFORMER WHEN THE READING OF LIQUID LEVEL GAUGE IS BELOW THE LOW POINT OF THE SCALE.
- DO NOT OPERATE DE-ENERGIZED TAP CHANGER WITH THE TRANSFORMER ENERGIZED.