

BATTLE OF ARMAGEDDON

The purpose of this study will be a blending of what the Battle of Armageddon will be like based on snippets from Isaiah and Revelation and how the ancient site of Petra that plays a key role correlates astronomically with the Belt Stars of the constellation of Orion. This study will only and can only emphasize certain key aspects based on scriptural clues pertaining to this battle. Foremost, the ancient site of Petra and the Battle of Armageddon are linked by the Abomination of Desolation event. This event, referred to by Jesus relates Petra in light of what the Prophet Daniel was shown of what will occur at the midpoint of the Tribulation Period. The conclusion of the Time of Jacob's Trouble will see the return of Jesus Christ to save the Remnant in the areas of Petra and Bozrah, etc. A background of Astro-Archeology will be presented first and then what some interpret as being the Battle of Armageddon will be considered. When Jesus touches-down on the Mount of Olives, it will literally be the same spot from where Jesus ascended in the presence of His Disciples after the resurrection at His 1st advent.

Jesus will pierce the fabric of space and time to descend and defend the Remnant of Israel. Jesus will then swing by Petra before He then confronts the armies of Lucifer in the Valley of Megiddo. It will only be after such a slaughter that He then touches down on the Mount of Olives as foretold by Zechariah. incidentally this route takes on a phi ratio trajectory.



Euphrates River
KINGS FROM THE EAST



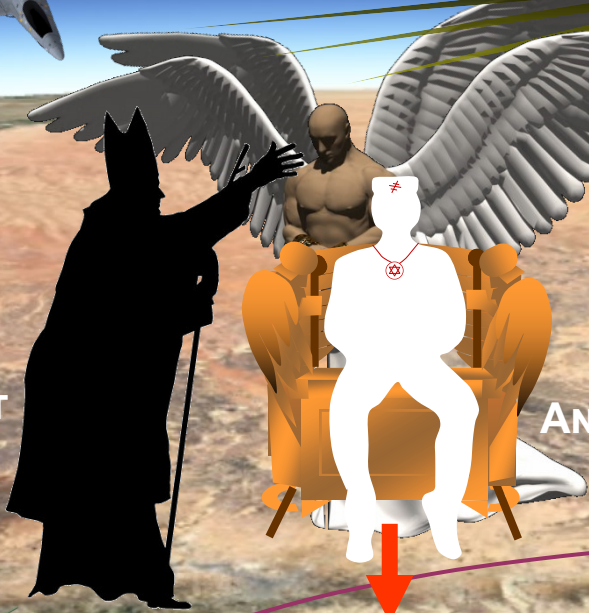
200,000,000 FALSE PROPHET



MEGIDDO



LUCIFER



ANTICHRIST

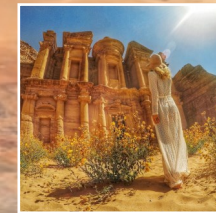
Parusia of Jesus

2ND ADVENT
DAY OF THE LORD

1. ↓

2. ↓

BOZRAH



Petra
THE REMNANT

3.

64 in
5 feet
2.6 m



8 feet or 2.4 meters

4.

JERUSALEM

200 miles / 320 km

~200,000,000 MEN

RIVER OF BLOOD



EILAT

© Composition & Some Graphics by
LUIS B. VEGA
vegapost@hotmail.com
www.PostScripts.orr
FOR ILLUSTRATION PURPOSES ONLY

Main Sources
GoogleEarth.com
Wikipedia.com



It appears that there will be 2 Heavenly Armies that will return with Jesus, 1 will be the Angelic Army as disclosed in Matthew 16:24. The other army is that of the Church Age Believers and Followers of Jesus as depicted in Jude 14-15 and Revelation 19:14, etc. Although Jesus' 'Warrior Bride' will be escorting Him to such conquests, it appears that the battles are all left to Jesus to avenge alone. This will be the dreadful Day of the LORD. The Bible states that the blood flowing-out from the armies of the Nations will rise as high as the horses' bridle for a distance of 1,600 stadia or about 200 miles or 320 kilometers.

