

GANG LOCK COMPONENTS



GANG LOCK COMPONENTS

- To centrally lock multiple drawers
- You will need 1 of 20" locking bar (EZ# 036758), 1 saddle & pin combination per drawer (EZ# 036753 & 036754), 2 guides per bar (EZ# 036755) as well as 1 of P4 2061 drawer lock which has removable backs to work with the gang lock components

MFG #	COMPONENT	EZ #
P1206151110000J	Bar	036758
P720412516X150J	Saddle	036754
P7204137510000J	Saddle Pin	036753
P720433111W010J	Guide	036755

CAMS, STRIKES & WASHERS



C7105
• 3" straight cam for pin tumbler cam locks



C7163
• 3" extended bolt for C8163 drawer lock
• Can be cut to required length



C2001 14A
• 1-3/4" x 1/2" with 3/16" form
• No bolt hole



C2004 14A
• 2-5/32" x 1/2" flat strike with square ends
• 7/8" x 17/64" bolt hole



P5 2000 308
• Wood washer converts 3/4" holes to a double "D" hole

MFG #	DESCRIPTION	FOR	EZ #
C2001 14A	Formed Strike	Desk/Drawer	036408
C2004 14A	Flat Strike	Desk/Drawer	036409
C7005 2C	3" Straight Cam	Wafer	036410
C7105 2C	3" Straight Cam	Pin Tumbler	036411
P5 2000 308	Spur Washer	Cam Locks	036749

FURNITURE & CHEST LID LOCKS



8384



8414



8826

8384 & 8414

- Lid locks for cedar chest application and other lid locking requirements
- **C8414** is surface mounted and requires a 9/16" diameter hole for cylinder (1 key supplied)
- **C8384** requires 11/32" wide x depth of lock full mortise plus mortise for selvage plus hole for key entry (packed with key escutcheon and 1 key)

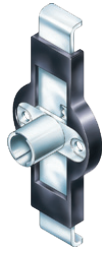
8826

- Surface mounted requiring hole for key entry
- Packed with key escutcheon and 1 key
- Strike not supplied

MFG #	TYPE	FINISH	KEYING	EZ #
C8384 3 KA	Lid Lock	Brass	KA	036431
C8414 4G	Lid Lock	Antique Brass	KD	011300
C8826 3 KA	Door Drawer Lock	Brass	KA	036433

C

TWO GANG SIDE DOOR LOCK



D270CB



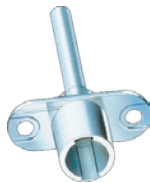
C500DC-19

- Application: Two drawer gang lock for locking two pedestal drawers with a single lock. Lock mounts on side of cabinet
- Operation: 180° key rotation, CCW to lock, key removable in both locked and unlocked positions
- Included: Housing supplied with two C500DC-19 drawer clips

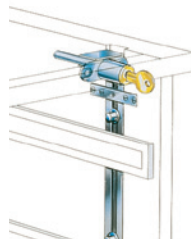
MFG #	EZ #
D270CB	073276

GANG DRAWER LOCKS

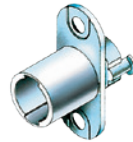
FRONT MOUNT SYSTEM 100



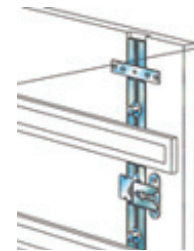
D100CB



SIDE MOUNT SYSTEM 150

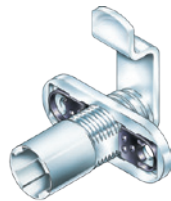


D150CB



MFG #	DESCRIPTION	EZ #
D100CB	Front Gang Lock	073284
D150CB	Side Gang Lock	073285

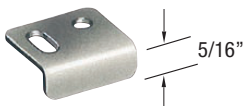
THICK PANEL LOCK



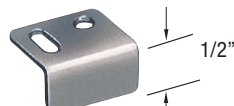
- Application: Universal type lock for either doors or drawers that can accommodate panel thickness from 7/8" to 1-3/8" thick
- Operation: 90° cam rotation, CCW to lock
- Supplied with straight cam (not shown) and bent cam
- Material: Unplated housings, zinc plated cams

MFG #	EZ #
C170CB	072872

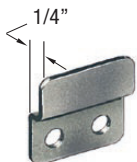
STRIKE PLATES & BEZEL



C100SP



C101SP



C257SP



**C100BZ
C300BZ**

BEZEL

- Allows cylinder bodies to be used with 3/4" through 7/8" diameter holes and permits use of locks in 7/8" thick panels
- Packaged in bags of 25

STRIKE PANEL

- All strike plate packed in 25 per bag

MFG #	DESCRIPTION	EZ #
C100SP19	Strike Plate	072462
C101SP19	Strike Plate	073335
C257SP19	Strike Plate	076463
C100BZ14A	Bezel Nickel	072867
C300BZ19	Bezel Black	073347