

COPACABANA CORPORATION INC. VOL. 3365, PG. 135 DRCC

FIRE STATION NUMBER 8

COLLIN COUNTY SURVEY NO. 153 ABSTRACT NO. 153

HEDGCOXE ROAD ATHLETIC SITE

CITY OF PLANO VOL. 3254, PG. 856 DRCC

NW CORNER OF THE A.B. HANNA SURVEY ABSTRACT # 383

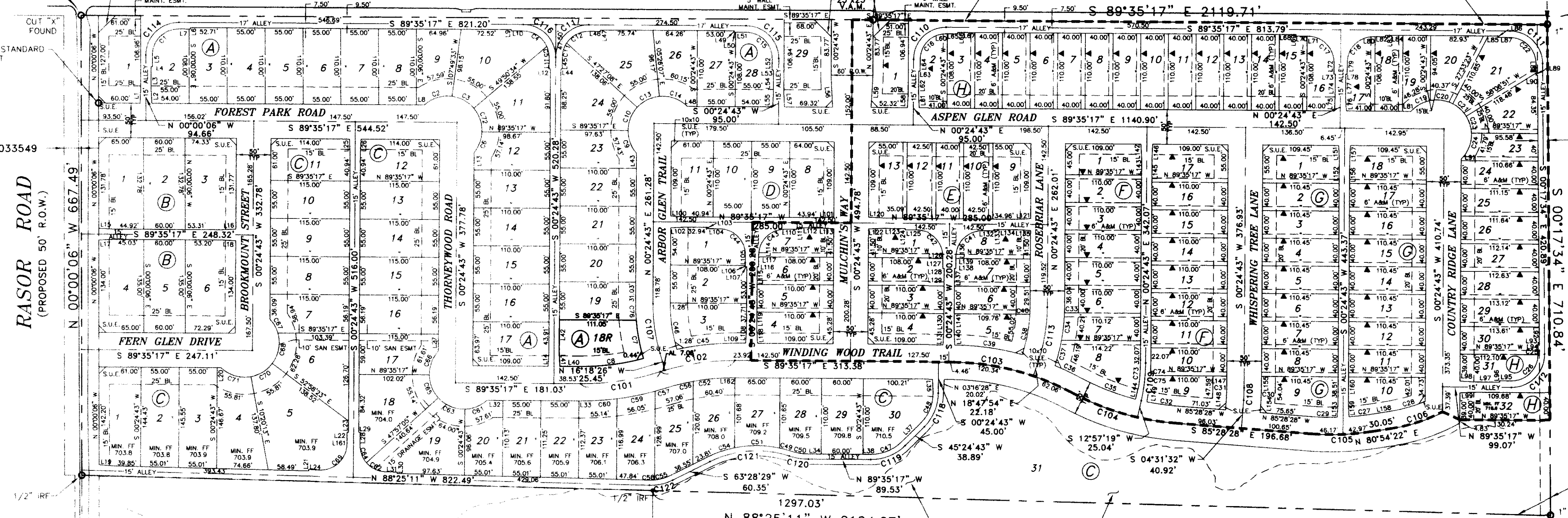
GRACE OUTREACH DAY CARE GRACE COMMUNITY CHURCH

TO BE DEVELOPED AT PATIO HOME(PH) STANDARDS

SET CITY OF PLANO STANDARD CONCRETE MONUMENT X= 2219466.1643 Y= 517142.2489 ELEV= 711.94

POINT OF BEGINNING

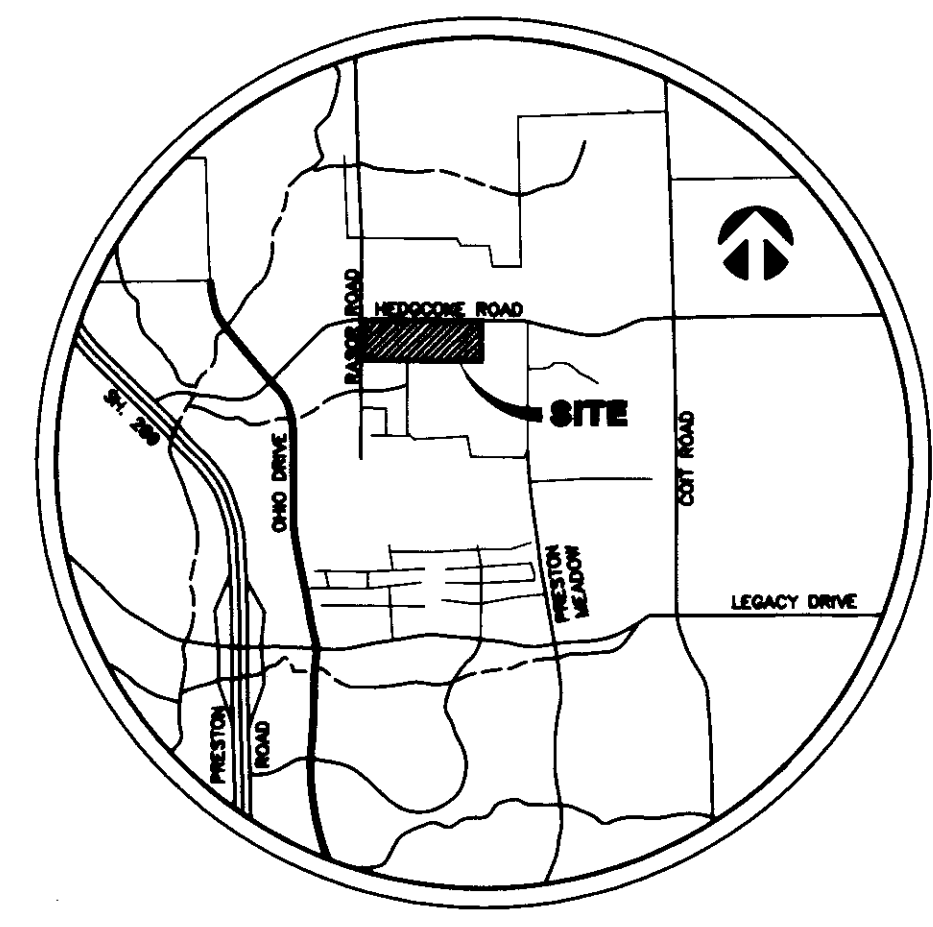
SET CITY OF PLANO STANDARD CONCRETE MONUMENT X= 2218345.5849 Y= 517023.3020 ELEV= 708.71



15' DRAINAGE ESMT. VOL. 2295, PG. 985 DRCC

THE ROMAN CATHOLIC DIOCESE OF DALLAS CLERK'S FILE NO. 97-0007636

A.B. HANNA SURVEY 383 ABSTRACT NO. 383



LOCATION MAP NOT TO SCALE

RICHARD H. TSENG, TRUSTEE VOL. 3357, PG. 346 DRCC

10' DRAINAGE & UTILITY EASEMENT CLERK FILE: 99-0033551

25' DRAINAGE & UTILITY EASEMENT CLERK FILE: 99-0033550

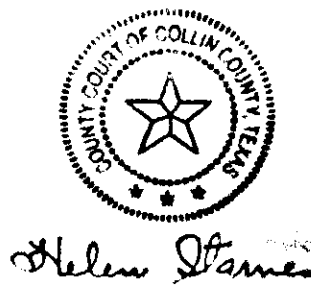
SHIHYI SAMUEL LEE CHUNG-YI LEE & CHUAN-CHUAN WANG VOL. 3428, PG. 236 DRCC

100-YEAR FLOODPLAIN FIRM NO. 480140-04106

DRAINAGE & FLOODWAY EASEMENT (122,222.15 S.F.) MAINTAINED BY H.O.A.

THE ROMAN CATHOLIC DIOCESE OF DALLAS CLERK'S FILE NO. 97-0007636

BOUNDARY LINE AGREEMENT VOL. 1183, PG. 846 (DRCC)



LEGEND

- BL BUILDING LINE
- VAM VISIBILITY, ACCESS & MAINTENANCE ESMT
- SUE SIDEWALK & UTILITY EASEMENT
- DESIGNATES ZERO LOT LINE
- STREET NAME CHANGE

S4138

LOT DATA SF-6 LOTS = 1

Filed for Record in Collin County, McKinney TX Honorable Helen Stames Collin County Clerk On Sep 07 2001 At 8:29am Doc/Num : 2001- 8112448 Recording/Type:PL 26.00 Receipt #: 29361

Engineer/Surveyor:

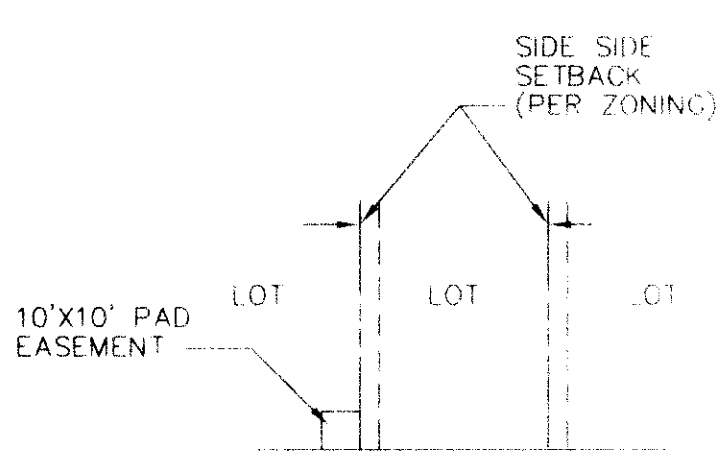
Grantham, Burge & Waldbauer Engineers, Inc.

OWNER

GOODMAN FAMILY OF BUILDERS, L.P. 5808 W. PLANO PARKWAY PLANO, TEXAS 75093

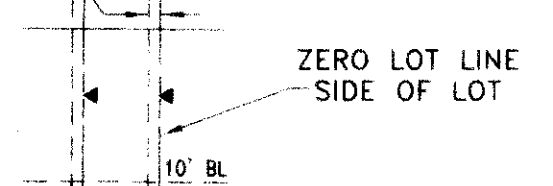


NOTES: S.U.E. TO BE LOCATED ON CORNER LOTS AT ALL STREET-STREET INTERSECTIONS



TYPICAL T.U. ELECTRIC EASEMENT NOT TO SCALE

6' ACCESS & MAINTENANCE (6'A&M) EASEMENT (TYPICAL IN PATIO LOTS)



PATIO LOT DETAIL

PURPOSE STATEMENT:

THE PURPOSE OF THE AMENDMENT IS TO CORRECT DATA FOR CURVE NO C8, AND TO REFLECT DISTANCE FROM THE PRC OF CURVE NO 101 AND CURVE NO 102 TO THE CENTERLINE INTERSECTION OF ARBOR GLEN TRAIL WITH WINDING WOOD TRAIL, ONLY LOT 18, BLOCK A IS AFFECTED BY THIS CORRECTION.

AMENDED PLAT BLOCK A, LOT 18 BEING A REVISION OF BLOCK A, LOT 18 CABINET L, PAGE 207 (PRCCT)

VILLAGES OF PRESTON GLEN

CITY OF PLANO, COLLIN COUNTY, TEXAS COLLIN COUNTY SCHOOL SURVEY, ABSTRACT NO. 153

JULY, 2001

SHEET 1 OF 2