

# DMI (Diversified Machine) CT-1 Quick-Change Internal Parts Breakdown



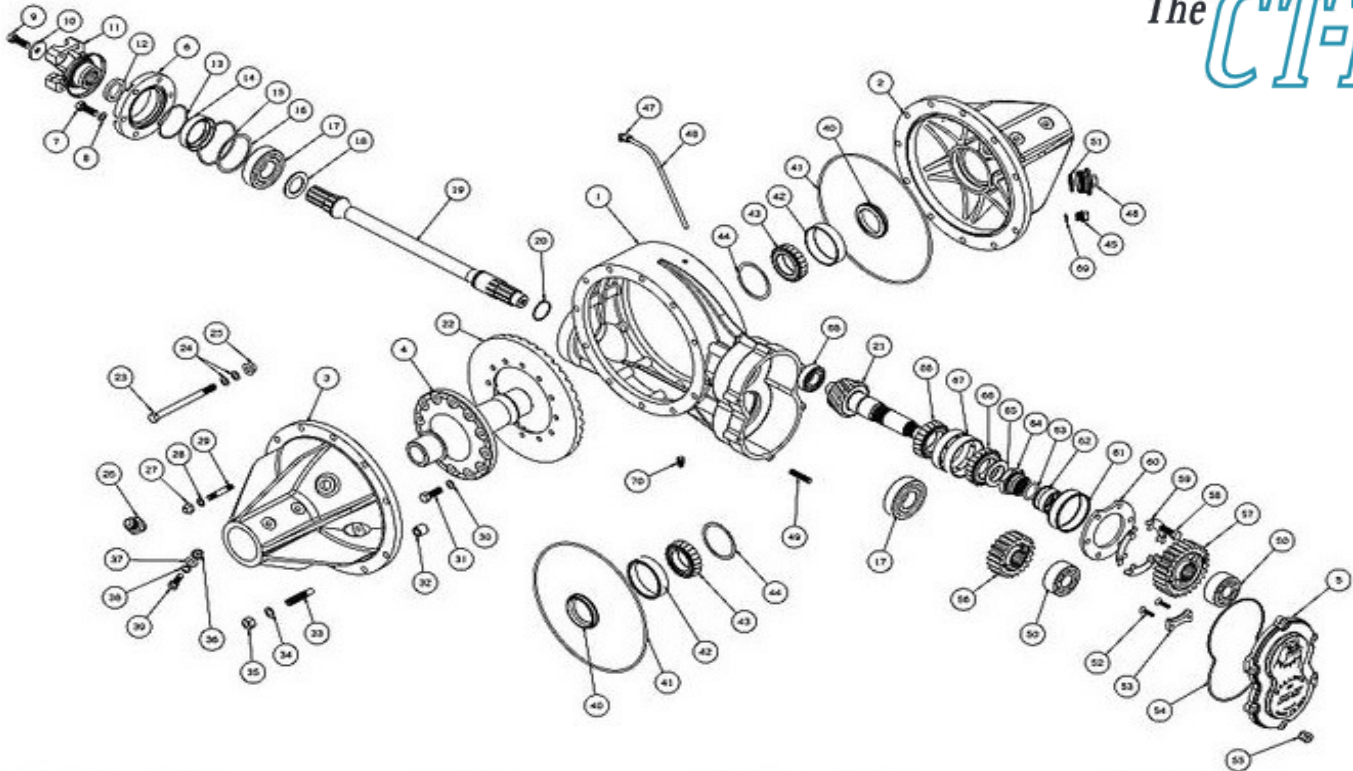
All DMI (Diversified Machine) Quick-Change Service Parts  
Available At Racecar Engineering



800-882-7231 — [sales@racecareng.com](mailto:sales@racecareng.com)

## CT-1 QUICK CHANGE REAR INTERNAL PARTS BREAKDOWN

The **CT-1**



Item	Qty.	Part No.	Description
1	1	DMIRRC-1000	Magnesium Center Section
2	1	DMIRRC-1103	Magnesium Right Side Bell
2	1	DMIRRC-1103-01	Magnesium Right Side Bell, Black
2	1	DMIRRC-1102	Magnesium Left Side Bell
3	1	DMIRRC-1102-01	Magnesium Left Side Bell, Black
4	1	DMIRRC-1270	Aluminum Spool
5	1	DMIRRC-1386B	Billet Aluminum Rear Cover With Bearings, Black
5	1	DMIRRC-1373	Vault-Lock Rear Cover With Bearings
9	1	DMIRRC-1482	Front Yoke Bolt
10	1	DMIRRC-1481	Front Yoke Washer
11	1	DMIRRC-1479	Front Yoke
12	1	DMIRRC-1485	Aluminum Spacer For Under Front Yoke
13	1	DMIRRC-1003	O-Ring For Seal Plate
14	1	DMIRRC-1002	Front Seal For Seal Plate
15	1	DMIRRC-1004	O-Ring For Seal Plate Flange
16	1	DMIRRC-1007	Spiral Lock For Seal Plate
17	1	DMIRRC-1411	Lower Shaft Bearing
19	1	DMIRRC-1427	Steel Lower Shaft
19	1	DMIRRC-1427HD	Steel Lower Shaft, Heavy Duty
21	1	DMIRRC-1300	4.12 Ring & Pinion
22	1	DMIRRC-1300	4.12 Ring & Pinion
23	1	DMIRRC-1125	Center/Side Bell Thru Bolt
25	16	DMIRRC-1127	Side Bell Flange Nut
27	1	DMIRRC-1127	Side Bell Flange Nut
29	6	DMIRRC-1110	Side Bell Stud
30	6	DMIRRC-1302	Ring Bolt Washer
31	12	DMIRRC-1301	Ring Gear Bolt
32	12	DMIRRC-1135	Ring Gear Back Stop
33	1	DMIRRC-1140	Back Stop Set Screw
34	1	DMIRRC-1146	Back Stop Washer
35	1	DMIRRC-1150	Back Stop Aluminum Nut
36	12	DMIRRC-1113	Locknut For Side Bell To Tube
37	12	DMIRRC-1114	Hardened Washer For Side Bell To Tube
38	12	DMIRRC-1115	Belleville Washer For Inside Tube
39	12	DMIRRC-1112	Bolt For Side Bell To Tube

Item	Qty.	Part No.	Description
40	2	DMIRRC-1104	Side Bell Axle Seal
41	1	DMIRRC-1220	Side Bell O-Ring
42	2	DMIRRC-1170	Side Bell Race
43	2	DMIRRC-1171	Side Bell Bearing For Aluminum Spool
-	1	DMIRRC-1180	Detent For Side Bell To Tube
44	1	DMIRRC-1276	Spool Shim Kit, 3 Ea. Of .010", .012", .015", .020"
45	1	DMIRRC-1016	Fill Level Plug
46	1	DMIRRC-1010	Large Inspection Plug
49	6	DMIRRC-1355	Rear Cover Stud
50	2	DMIRRC-1350	Rear Cover Bearing
51	1	DMIRRC-1015	Large Inspection Plug O-Ring
52	2	DMIRRC-1391	Bolts For Gear Cover Bearing Retainer
53	1	DMIRRC-1390	Gear Cover Bearing Retainer
51	1	DMIRRC-1015	Large Inspection Plug O-Ring
52	2	DMIRRC-1391	Bolts For Gear Cover Bearing Retainer
53	1	DMIRRC-1390	Gear Cover Bearing Retainer
54	1	DMIRRC-1340	Rear Cover Gasket, Steel Insert, PTFE Coated
54	1	DMIRRC-1375A	Vault-Lock Seal For Rear Cover
55	6	DMIRRC-1361	Rear Cover High Nut, Black
55	6	DMIRRC-1361B	Rear Cover High Nut, Blue
55	6	DMIRRC-1361G	Rear Cover High Nut, Gold
58	6	DMIRRC-1335	Pinion Retainer Bolt
59	3	DMIRRC-1330	2-Bolt Locking Tab
60	1	DMIRRC-1320	Pinion Retainer Flange
61	1	DMIRRC-1315	Pinion Bearing Spacer
62	1	DMIRRC-1366	Posi-Lock Retainer
63	1	DMIRRC-1367	Posi-Lock O-Ring
64	1	DMIRRC-1369	Posi-Lock Nut, RH
-	1	DMIRRC-1306	Posi-Lock And Bearing Kit
65	1	DMIRRC-1368	Pinion Washer
66	2	DMIRRC-1311	Big Pinion Bearing, Timken
67	1	DMIRRC-1312	Big Pinion Bearing Race
68	1	DMIRRC-1310	Small Pinion Bearing
69	1	DMIRRC-1017	Fill Level Plug O-Ring
70	1	DMIRRC-1031	3/8" NPT Magnetic Drain Plug

Order Online On Our Website: [WWW.RACECARENG.COM](http://WWW.RACECARENG.COM)