

# AS Products – System Requirements - 2016

**Matthew Hewitt / 3rd August 2016**

**Document version: 7**

This document contains information about the recommended hardware and software requirements for the following products – Impact 2016, Enterprise v4, WEBcnx v4.1 and Impact nServer 2016



**ARDEN SOFTWARE**

# Contents

Hardware/Software Requirements.....	4
Impact 2016 .....	4
Impact CAD .....	4
Hardware Requirements.....	4
Software Requirements .....	4
Impact Viewer.....	4
Hardware Requirements.....	4
Software Requirements .....	4
Impact Licence Server .....	5
Licence Server .....	5
Hardware Requirements.....	5
Software Requirements .....	5
Licence Server Administrator.....	5
Hardware Requirements.....	5
Software Requirements .....	5
Impact Enterprise v4.....	5
Enterprise Replication Services (ERS) – Central.....	5
Hardware Requirements.....	5
Software Requirements .....	5
Enterprise Replication Services (ERS) – Site.....	5
Hardware Requirements.....	5
Software Requirements .....	6
Enterprise Replication Services (ERS) – Impact CAD Client .....	6
Hardware Requirements.....	6
Software Requirements .....	6
WEBcnx v4.....	7
WEBcnx Web Application .....	7
Hardware Requirements.....	7
Software Requirements .....	7
WEBcnx Client (Web Browser).....	7
Hardware Requirements.....	7
Software Requirements .....	8
2D Layer Viewer Support .....	8
Impact nServer 2016.....	8
Impact nServer Application.....	8
Hardware Requirements.....	8



Software Requirements .....	8
Impact nServer Proxy .....	9
Hardware Requirements .....	9
Software Requirements .....	9
Further Information .....	9
Supported Operating Systems .....	9
Supported Web Browsers .....	9
Supported Database Platforms .....	9
Typical Application/Hardware Architecture Diagrams .....	11
Standalone Impact Installation .....	11
Impact/WEBcnx Installation .....	11
Impact/Enterprise/WEBcnx Installation .....	11



## Hardware/Software Requirements

---

These are the **recommended** hardware and software components for the listed Arden Software products. In general, meeting or exceeding these specifications will provide improved performance and a better user experience.

Existing hardware of lower specifications could be utilised and in these cases the specifications should be verified by Arden Software prior to installation.

## Impact 2016

---

### Impact CAD

#### *Hardware Requirements*

- Intel® Core™ i7 CPU or equivalent
- 8GB Memory
- 2GB nVidia graphics card<sup>1</sup>
- Monitor capable of resolution 1600 x 900 or greater

#### *Software Requirements*

- Windows 7/8/8.1/10 [See also Supported Operating Systems]
- Windows Installer
- Nalpeiron Service Installer<sup>2</sup>
- A suitable database engine to host the design database, e.g. SQL Server or Oracle<sup>3</sup>
- Appropriate database client drivers

<sup>1</sup> Consideration should be made for the type of work to be carried out. Those frequently working with 3D, graphics and animation should pay close attention to the graphics card requirements.

<sup>2</sup> Where standalone licensing is used.

<sup>3</sup> Refer to [Supported Database Platforms] for more information on design database hosting options.

Also Note. Installing and using Impact CAD software on a Terminal Services or Remote Desktop Services server (Microsoft, Citrix, etc.) is not recommended due the highly graphical nature of CAD software. Also, you cannot use standalone, Nalpeiron licencing service with this configuration.

### Impact Viewer

#### *Hardware Requirements*

- As per Impact CAD

#### *Software Requirements*

- Windows 7/8/8.1/10 [See also Supported Operating Systems]
- Windows Installer
- Appropriate database client drivers, e.g. Oracle or SQL Server

## Impact Licence Server

---

### Licence Server

#### Hardware Requirements

- USB port

#### Software Requirements

- Windows 7/8/8.1 or Windows Server 2008/2012/2014 [See also Supported Operating Systems]
- DESkey 'DK2' Dongle Drivers
- Appropriate database client drivers, e.g. Oracle or SQL Server

### Licence Server Administrator

#### Hardware Requirements

- There are no specific hardware requirements other than those required to meet the software requirements.

#### Software Requirements

- As per Licence Server

## Impact Enterprise v4

---

### Enterprise Replication Services (ERS) – Central

#### Hardware Requirements

- 4 CPU cores\*
- 8GB Memory\*

#### Software Requirements

- Windows Server 2008/12/14 (64bit) configured with an “application server” role
- Microsoft Internet Information Services (IIS) version 8 or later
- Microsoft .Net Framework runtime, version 4.5.1
- Windows Installer
- Appropriate database client drivers, e.g. Oracle or SQL Server

### Enterprise Replication Services (ERS) – Site

#### Hardware Requirements

- 2 CPU cores\*
- 4GB Memory\*

## **Software Requirements**

- Windows Server 2008/12/14 (64bit) configured as an “application server”
- Microsoft .Net Framework runtime, version 4.5.1
- Windows Installer
- Appropriate database client drivers, e.g. Oracle or SQL Server
- (Optionally) Microsoft Internet Information Services (IIS) version 8 or later<sup>1</sup>

<sup>1</sup> The use of the Impact Enterprise Services running as a Windows Service may be acceptable for a site though is not as scalable as an IIS hosted alternative. In this case, the Microsoft IIS component would not be required.

## **Enterprise Replication Services (ERS) – Impact CAD Client**

### **Hardware Requirements**

- As per Impact CAD Application

### **Software Requirements**

- As per Impact CAD Application
- Microsoft .Net Framework runtime, version 4.5.1

Note. Impact Enterprise databases can be hosted separately or alongside the replication services in the central and site locations. See Supported Database Platforms for more information.

\* Hardware requirements are variable depending on size of Enterprise. Increased scaling (number of sites and users) may require additional resources.

The resources required at the central Enterprise server are related to a) the number of sites (including individual user sites) b) the number of users connected throughout the wider Enterprise system c) the volume of concurrent users that use the system at any one time. The resources required at any Enterprise site are related to the number of users connected to that site.

Whilst some customer systems consist of a single central server with lots of separately connected single-user sites, others we’ve configured have many users connected to fewer sites. Therefore, lower direct traffic and processing are required on the central site.

The recommended system requirements for Enterprise given here would be recommended for around 100 concurrent users in any given site arrangement. Though supporting network capacity considerations should also be made.

Contact Arden Software for more information and a recommendation based on your intended scale.

## WEBcnx v4

---

### WEBcnx Web Application

#### Hardware Requirements

- CPU: IIS versions 8 and later provide solid benchmark performance on **Intel Xeon, AMD Opteron, and AMD Athlon** processors. Any of these CPUs provide good starting points for the typical IIS server. You can achieve significant performance improvements with a large processor cache. It is advised to look closely at the L1, L2, and L3 cache options available—a larger cache can yield much better performance overall.

We recommend you choose from the aforementioned CPU model variants, making sure to allocate at least **4 CPU cores\*** to the system running the operating system, whether virtual or physical.

- 8GB Memory\*
- Hard Disk: Microsoft has stated that “High-bandwidth sites should consider hardware-based redundant array of independent disks (RAID) solutions using copper or fiber channel–based small computer system interface (SCSI) devices.” Historically, Arden has gone beyond this to suggest that the adoption of SAS technologies, to be configured in a mirrored RAID configuration, which most importantly, should allow the disks to be **local to the server, should be definite consideration**. The need for a fast access local hard disk for holding IIS operating files, such as static web content and well as the system pool page file, cannot be stressed enough.
- Page file - 1-1.5 x RAM Size (e.g. 8GB RAM = 12GB Page file size)
- 1Gbps NIC cards, preferably teamed for greater throughout

#### Software Requirements

- Windows Server 2008/2012/2014 (64 bit) configured with a “web server” role
- .net Framework 4.5.1
- Windows Installer
- ASP.NET AJAX 1.0
- IIS 8 or above
- Appropriate database client drivers, e.g. Oracle or SQL Server

\* Hardware requirements are variable depending on size of WEBcnx solution. Increased scaling (number of users) may require additional resources. Contact Arden Software for more information.

### WEBcnx Client (Web Browser)

#### Hardware Requirements

- There are no specific hardware requirements other than those required to meet the software requirements

## Software Requirements

- Internet Explorer 11 (recommended), Microsoft Edge, Mozilla Firefox, Apple Safari, Google Chrome [See also Supported Web Browsers]
- Configured with JavaScript enabled
- Configured with Java enabled<sup>1</sup>
- Adobe PDF Reader<sup>2</sup>

<sup>1</sup> Where the Java-based 2D CAD layer viewing mode is enabled

<sup>2</sup> Where either the PDF-based 2D or 3D layer viewer mode is enabled

## 2D Layer Viewer Support

Browser	PDF Plugin Supported	Java Viewer Supported	End of life Date
Chrome 32/64-bit	No	No	Sept 2015
Firefox 32-bit	No	Yes	End of 2016
Firefox 64-bit	No	No	Never supported
IE 11	Yes	Yes	Estimated 2020
Edge	Yes	No	Java never supported
Safari	Yes	No	Unknown

## Impact nServer 2016

---

### Impact nServer Application

Impact nServer, where required solely for use with WEBcnx, should be installed alongside the WEBcnx web application on the web server. In addition to the hardware and software requirements of WEBcnx, Impact nServer requires access to Impact Licence Server either to be installed locally, or to be remotely accessible.

### Hardware Requirements

- There are no specific hardware requirements other than those required to meet the software requirements.

### Software Requirements

- Windows Server 2008/2012/2014 configured as an “application server” (including ‘COM+’ and ‘DCOM’ enabled features)
- Windows Installer
- Appropriate database client drivers, e.g. Oracle or SQL Server
- Impact Licence Server



## Impact nServer Proxy

Where Impact nServer is NOT located in the same location as the calling client, such as the WEBcnx web application, nServer proxy is required in its place and configured to provide remote access to nServer.

### Hardware Requirements

- There are no specific hardware requirements other than those required to meet the software requirements.

### Software Requirements

- Same “application server” requirements as per nServer requirements **if** ran on network-based operating system (NOS)
- Windows Installer

## Further Information

---

### Supported Operating Systems

Whilst the operating systems listed in each product’s software requirements reflect the recommended options, other supported operating systems include:

- Windows Vista is supported but no longer recommended as Microsoft ended support for it in April 2012
- Both 32 and 64 bit versions of those operating systems mentioned.

Also Note.

- Impact and affiliated products will no longer install on Windows XP because Microsoft ended support for it in April 2014. Similarly, Windows 2000 is no longer supported.
- Windows Server 2003 is also no longer be supported for our server-based software

### Supported Web Browsers

Whilst the web browsers listed in each product’s software requirements reflect the recommended options, other supported web browsers include:

- Internet Explorer 10
- Internet Explorer 9<sup>1</sup>

Limited testing has been undertaken for this legacy version (IE9), but there are **no** known issues at the time of release, however, Internet Explorer 10 or later is recommended where available.

### Supported Database Platforms

Impact relies upon a database engine to host the design database for one or more clients to share access to.

Impact 2016 requires that your database server is running up-to-date software, as follows:

- SQL Server 2005 SP2, version 9.00.3042 or later
- SQL Server 2008 SP1, version 10.00.2531 or later
- SQL Server 2008 R2, version 10.50.1600 or later
- SQL Server 2012, any version
- SQL Server 2014, any version
- Oracle 10g Release 2, version 10.2.0.1 or later
- Oracle 11g Release 1, version 11.1.0.6 or later
- Oracle 12c Release 1, version 12.1.0.1 or later
- MySQL, version 5.1 or later

Also Note.

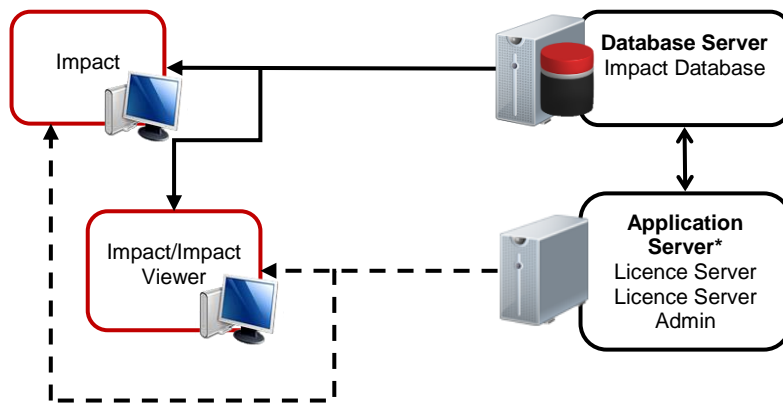
- For SQL Server databases, the compatibility level needs to be “SQL Server 2005 (90)” or higher.
- MySQL 5 (not compatible with WEBcnx task database)

## Typical Application/Hardware Architecture Diagrams

The following diagrams illustrate all the component parts of an Impact, WEBcnx and Enterprise in standalone and combined installations and their interaction with each other. Due to the flexibility of our products, it is possible to host almost all the component parts on a single physical machine or distribute them over multiple servers.

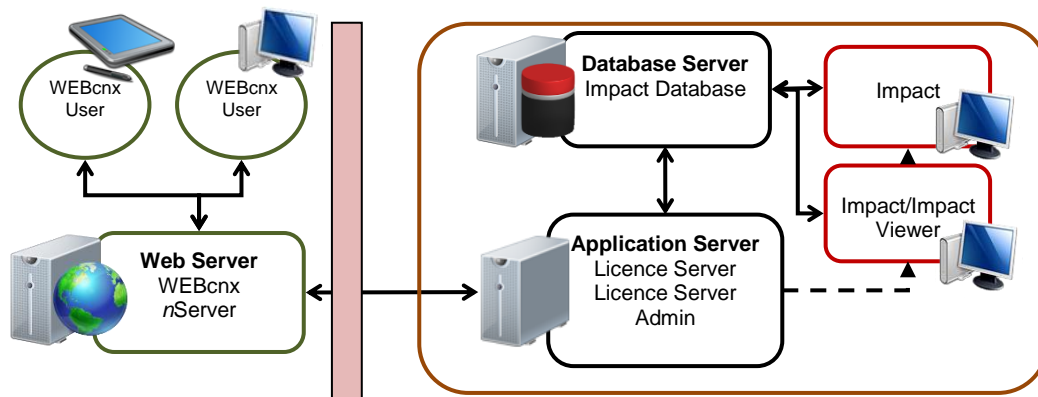
If any external/non-VPN access is required to WEBcnx, part of the configuration must be hosted outside the firewall. A secure SSL certificate should ideally be employed on each web server for maximum security.

### Standalone Impact Installation



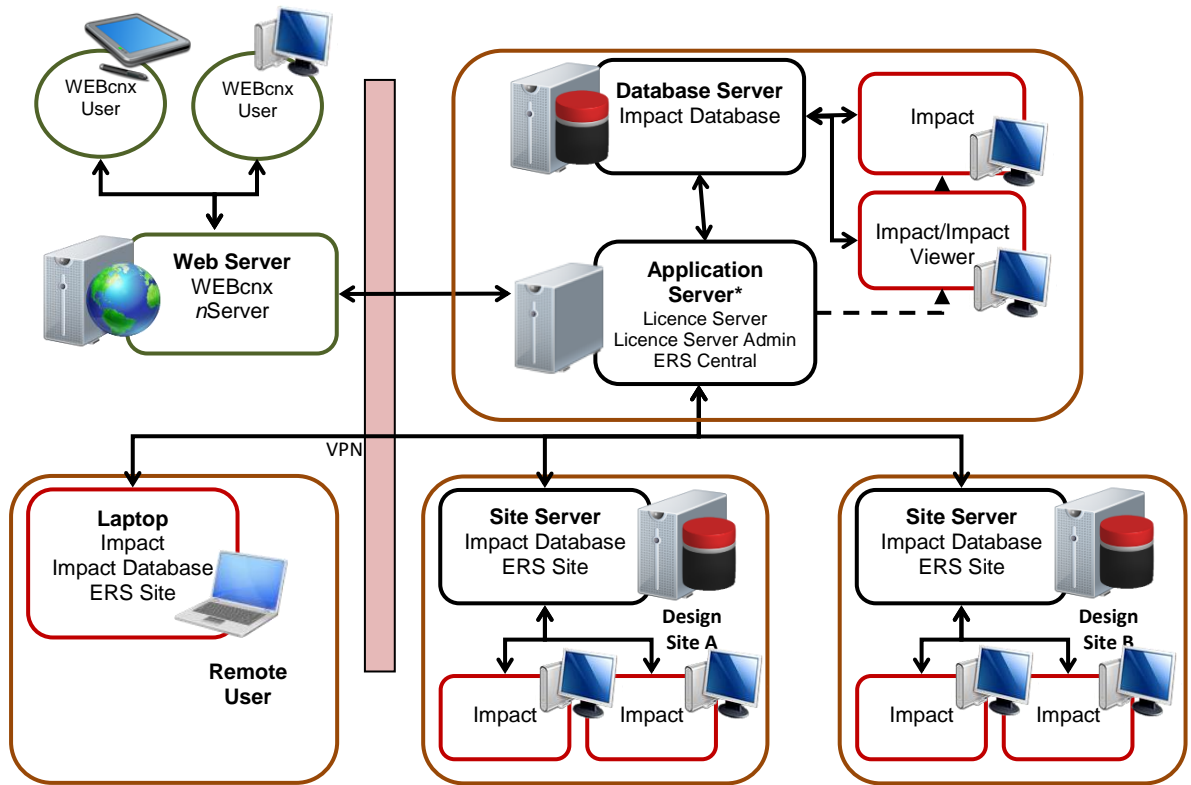
--- Optional for Licence Server

### Impact/WEBcnx Installation



--- Optional for Licence Server

### Impact/Enterprise/WEBcnx Installation



\* Separate Application / Database servers are also supported  
 --- Optional for Licence Server



## ARDEN SOFTWARE

### **Arden Software Limited (UK)**

Arden House  
Shepley Lane, Marple  
Stockport, SK6 7JW

**T** +44 (0)161 449 6600

### **Arden Software GmbH**

Jesinger Str. 65  
73230 Kirchiem unter Teck  
Germany

**T** +49 7021 80799 0

### **Arden Software North America LLC**

1790 Sun Peak Drive, Suite B 101  
Park City  
UT 84098  
USA

**T** +1 (435) 709 3100

### **Arden Software A/S**

Sdr. Voldgade 10, 1.th,  
DK-7000 Fredericia  
Denmark

**T** +45 7620 1880

### **Arden Software Asia Pacific**

II F 162, Nehru Nagar  
Ghaziabad- 201001  
Uttar Pradesh  
India

**T** +91 120 4203439

**E** [info@ardensoftware.com](mailto:info@ardensoftware.com)

**W** [www.ardensoftware.com](http://www.ardensoftware.com)