



# PLANT **SUPPORT** **ENGINEERED** TO MEET ALL OF YOUR PROJECT GOALS SINCE 1993.

- Mechanical Services
- Gas Path Solutions
- Industrial Masonry
- On-Site Services



Company **Profile**

The background image is a night-time photograph of an industrial facility. Two prominent tall smokestacks with red and white horizontal stripes are illuminated from below, with red lights at their tops. A complex network of blue-painted pipes and structural steel beams runs diagonally across the upper right portion of the frame. The overall scene is dark, with the facility's lights providing the primary illumination.

## OUR VISION

Our vision is to be the preferred service provider for customers demanding the highest standards of quality and service. With our experienced team and the most advanced technology in the industry, we achieve this by solving the toughest of problems within the tightest of deadlines.

- Lisa Ballard, COO

 **WOMEN  
OWNED**





# Welcome to



Plant support  
engineered to  
meet all of your  
project goals  
since 1993.



# Table of Contents

Table of Contents.....	4
About Us.....	5
Gas Path Solutions <i>from SVI Dynamics</i> .....	6
Onsite Services.....	7
Industrial Masonry.....	8
Welding & Fabrication.....	9
Specialty Machining .....	10
Valve Maintenance.....	11



# About Us



## OUR MISSION STATEMENT

- To satisfy our customers by solving their problems with quality services and products,
- To work safely and be part of a successful team,
- To earn a good living for our families and have the freedom to invest in our future, and...
- To have some fun along the way.

## OUR DIVISIONS

- Gas Path Solutions from SVI Dynamics
- Onsite Services
- Industrial Masonry
- Welding & Fabrication
- Specialty Machining
- Valve Maintenance

## THE SVI INDUSTRIAL ADVANTAGE

### 1. Turnkey Solutions

- Total solutions / One Provider / Ease of doing business
- Cost efficiencies

### 2. Independence

- No lock-in with OEMs / Repair-first philosophy

### 3. Mobile

- Rapid response / Geographic flexibility / Safety Focused / Quality



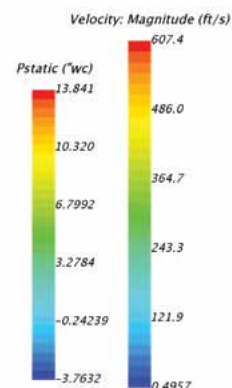
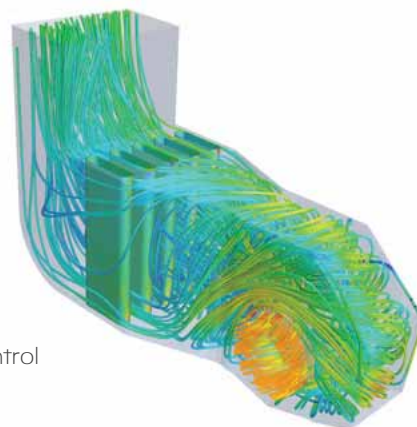
A Division of SVI Industrial

# Gas Path Solutions

## OEM AND AFTERMARKET ENGINEERED NOISE CONTROL AND GAS PATH SOLUTIONS

### Applications/Products:

- Gas turbine inlet/exhaust systems
- SCR emissions control systems
- HRSG noise control and outage support
- Acoustical panel systems  
(enclosures, buildings, barriers and shrouds )
- Compressor station noise control
- Rotating equipment and reciprocating engine noise control



### Engineering to support project goals:

- Acoustical – noise modeling, surveys and predictions
- Aerodynamic – CFD and physical modeling
- Mechanical – thermal and finite element analysis (FEA )
- Structural – structural analysis utilizing STAAD Pro, creep and thermal fatigue analysis
- Inspections – root cause analysis





## ON-SITE SERVICES

At **SVI Industrial**, our elite team of project managers, engineers, skilled technicians and support staff has the expertise and experience to work with your engineering, operations and maintenance personnel to develop and customize the most advantageous plan to minimize down time and keep your plant performing at optimum levels.

With a 24/7 on call team, 7 fully equipped mobile units, and unparalleled expertise, we have the resources to handle virtually any task no matter the size. SVI is committed to delivering the highest quality workmanship and successfully completing the most daunting and complex of projects safely and on schedule at your plant.



### SVI Industrial offers a variety of specialized on-site services:

- Valve testing, repair and installation
- Field Machining
- Piping and heat exchanger installation and repair
- Tank repairs and installation
- SCR emission control system support
- Code and non-code welding services
- Equipment removal and re-installation
- Exhaust stack liner repair and replacement
- Replacement of stack and vent silencers
- Tile-lined tank and vessel repairs
- Brick and tile tank floor lining installation
- Acoustic and thermal weld surveys and engineering analysis





## INDUSTRIAL MASONRY

SVI Industrial's in-house professional engineers and technicians combine years of experience across the industry with specialty engineering to design, fabricate, install and maintain innovative corrosion control solutions to ensure proper performance and longevity of paper and pulp mill equipment.

### **Our applications include the repair and installation of:**

- Tile-lined tank and vessels
- Brick and tile tank floor lining
- Washers
- Tile Chests
- Towers
- Columns
- U-Drains

### **Some of our lining options include:**

- Tile-lined, reinforced concrete
- Acid Resistant Brick
- Lined carbon steel (resinous material or tile )
- Flake glass / applied linings
- Glass mat reinforced mortar
- Borosilicate block
- Steel, tile-lined support tanks
- Fillet at floor to wall intersection
- Supply and install new inserts and quick opening manways



SVI Industrial's masonry division is your source for design, inspection and maintenance services for process vessels, tile tank vessels, containment areas, sumps, pits and trenches. We offer skilled engineering with decades of experience and state of the art equipment and materials. You can rest assured that SVI's craftsmanship and quality is unsurpassed by anyone in the industry.





## WELDING AND FABRICATION

Over the last two decades, our welding and fabrication division has grown significantly and offers a variety of welding, fabrication and installation services to compliment the full range of specialty engineering services that we provide.

SVI Industrial utilizes a quality system that meets the highest industry standards, and our team of welders and engineers are committed to quality, efficiency and reliability. We hold NBIC "R" and ASME "S" and "U" certifications. Each welding technician is certified in accordance with ASME section IX requirements.



### We offer a variety of welding services:

- Welding and fabrication of unjacketed and jacketed piping assemblies
- Repair and modifications of code-stamped heat exchangers and vessels
- Heat exchanger repair and re-tubing
- Carbon steel, stainless steel, nickel-alloy and titanium pipe fabrication and installation
- CoCr "Stellite" and other hard-facing overlays
- Field installation and repair
- Confined space welding
- Fully jacketed valves
- Turbine exhaust stack repairs, installation and modification



## SPECIALTY MACHINING

Much of the equipment present in plant sites cannot be removed and transported for repair. SVI Industrial's field machining division ensures that these critical components are repaired or replaced efficiently and cost-effectively meeting the appropriate industry standard. In addition to our mobile machine shops, our extensive fleet of portable equipment allows us to perform a variety of services that include:

- Flange facing
- Drilling and tapping
- Pipe cutting and beveling
- Hole and line boring
- Valve seat grinding, lapping machining and replacement
- Reverse engineering and manufacturing of parts with long lead times or obsolete manufacturers
- Resurfacing gasket landings
- Honing
- Stud removal and threading
- Heat exchanger machining
- Turbine valve machining and repairs
- Core sample drilling



**With our unique ability to combine our welding expertise with our cutting-edge machining capabilities, SVI Industrial strives to increase efficiency and reduce down time.**



## VALVE MAINTENANCE

With over 30 years of outstanding service, SVI Industrial is one of America's leading industrial valve companies. Our experienced team of skilled technicians and engineers has the expertise to handle the most complex repairs. Our valve services are extensive, economical and flexible. We service all valve types in our shop and on-site, and as an added service, we offer free inspections on any valve and free pickup and delivery within 150 miles of any of our shops. Our goal is to reduce your cost of ownership and increase your plant's efficiency.

- In-situ and shop repair, setting, testing and certification of sections I & VII safety valves
- In-situ recertification, testing and repair of steam service safety valves using our portable boiler and mobile repair shops
- Repair of process valves and pneumatic controls
- Repair and certification of control valves
- In-line valve diagnostics and testing
- In-line valve seat replacement
- Industrial machining and welding
- Turbine valve seat repairs
- Repair of water and steam regulators
- Repair and testing of backflow devices
- Valve tracking/inventory programs
- Management of industrial maintenance programs
- FREE online valve test reports and maintenance history



SVI Industrial has fully equipped shops in NC, GA, VA and IN along with seven mobile valve repair units, experienced technicians, certified welders and machinists, diagnostic and testing equipment and a 24/7 on call team ready to assist you with the most exceptional service in the industry.





## EXCEEDING EXPECTATIONS

Every customer, Every time



INCEUSA



V13-0221

### Address

Corporate Headquarters  
12261 Nations Ford Road  
Pineville, NC 28134

### Satellite Locations

Narrows, VA	Mt. Vernon, IN
Cartersville, GA	LaPorte, IN
Atkinson, NC	Palatka, FL

### Contact

Phone : 704-688-9800  
[www.svi-industrial.com](http://www.svi-industrial.com)