



National Institute of
Diabetes and Digestive
and Kidney Diseases

Opportunities for Funding Cross-Disciplinary Pelvic Research

Tamara G. Bavendam, M.D., M.S.

Program Director, Women's Urologic Health

National Institute of Diabetes and
Digestive and Kidney Disorders



National Institute of
Diabetes and Digestive
and Kidney Diseases

Disclaimer



**National Institute of
Diabetes and Digestive
and Kidney Diseases**



National Institute of
Diabetes and Digestive
and Kidney Diseases

Key Messages

- **THERE ARE NO SECRET ANSWERS**
- What excites you is far more important than what the NIH is interested in?
- NIH Program Officers are your friend – USE US
- Research will require multiple funding sources across your career
- Communicate clearly and tell a coherent “story” – you are marketing yourself and your science – write for a well-educated lay person
- Serve on Review Groups – avoid scarcity mentality



Are you a good candidate to be a career as a NIH funded researcher?

YES if you...

Have a “fire” in your belly to answer a question

Are curious

Take criticism well

Are patient and persistent

Like to work as a part of a team

Like being outside comfort zone

Like writing and networking



Key Messages

- THERE ARE NO SECRET ANSWERS
- **What excites you is far more important than what the NIH is interested in?**
- NIH Program Officers are your friend – USE US
- Research will require multiple funding sources across your career
- Communicate clearly and tell a coherent “story” – you are marketing yourself and your science – *write for a well-educated lay person*
- Serve on Review Groups – avoid scarcity mentality



Key Messages

- THERE ARE NO SECRET ANSWERS
- What excites you is far more important than what the NIH is interested in?
- **NIH Program Officers are your friend – USE US**
- Research will require multiple funding sources across your career
- Communicate clearly and tell a coherent “story” – you are marketing yourself and your science – *write for a well-educated lay person*
- Serve on Review Groups – avoid scarcity mentality



Key Messages

- THERE ARE NO SECRET ANSWERS
- What excites you is far more important than what the NIH is interested in?
- NIH Program Officers are your friend – USE US
- **Research will require multiple funding sources across your career**
- Communicate clearly and tell a coherent “story” – you are marketing yourself and your science – *write for a well-educated lay person*
- Serve on Review Groups – avoid scarcity mentality



Key Messages

- THERE ARE NO SECRET ANSWERS
- What excites you is far more important than what the NIH is interested in?
- NIH Program Officers are your friend – USE US
- Research will require multiple funding sources across your career
- **Communicate clearly and tell a coherent “story” – you are marketing yourself and your science – *write for a well-educated lay person***
- Serve on Review Groups – avoid scarcity mentality



Key Messages

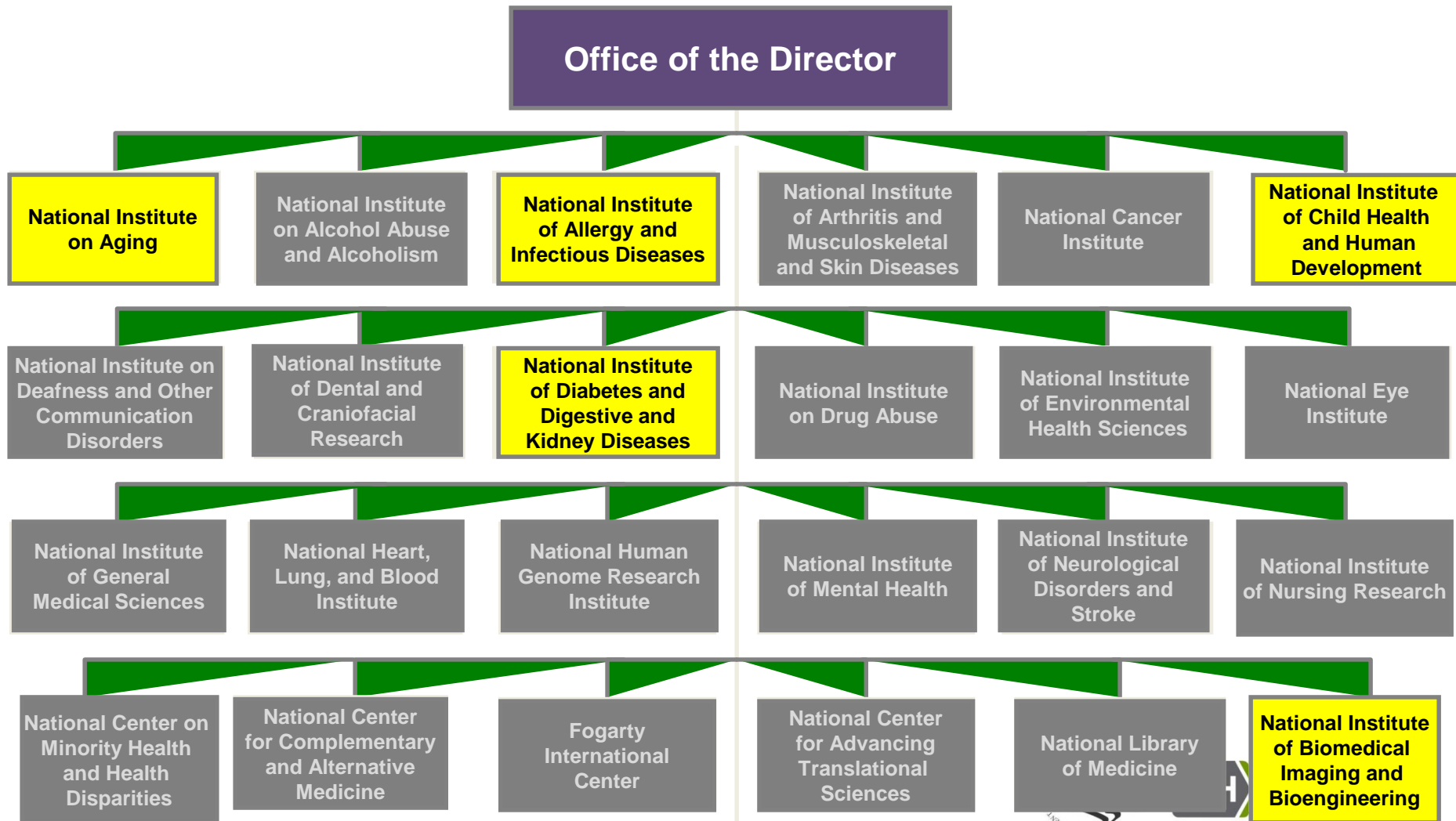
- THERE ARE NO SECRET ANSWERS
- What excites you is far more important than what the NIH is interested in?
- NIH Program Officers are your friend – USE US
- Research will require multiple funding sources across your career
- Communicate clearly and tell a coherent “story” – you are marketing yourself and your science – *write for a well-educated lay person*
- **Serve on Review Groups – avoid scarcity mentality**



How the NIH works



National Institutes of Health



National Institute of Diabetes and Digestive and Kidney Diseases

The MISSION of the National Institute of Diabetes and Digestive and Kidney Diseases (NIDDK) is to conduct and support medical research and research training and to disseminate science-based information on diabetes and other endocrine and metabolic diseases; digestive diseases, nutritional disorders, and obesity; and kidney, urologic, and hematologic diseases, to *improve people's health and quality of life*.

Benign urological conditions

Benign prostatic hyperplasia, urinary incontinence, urinary tract infections, stones, erectile dysfunction, urologic chronic pelvic pain syndromes (including interstitial cystitis and chronic prostatitis), congenital urologic disorders, repair and regeneration of lower urinary tract organs, and normal and abnormal lower urinary tract development and physiology



NIDDK Benign Urology Program

- 72 Million dollars in 2015
- How 2015 money was spent
 - 41% R01
 - 2% R21
 - 24% U01
 - 8% Training
 - 19% Centers (Ps and U54)
 - 7% SBIR/STTR (Small Business)
- *Hope* to maintain pay line of 13(18 ESI) in 2017



NIDDK Division of Kidney, Urology, and Hematology

Urologic Women's Health Portfolio

The Women's Urology program supports basic, translational, and clinical studies related to the normal and abnormal function of the lower urinary tract. Research studies are conducted with both children and adults on the etiology, diagnosis, treatment, and prevention of such clinical disorders as **urinary incontinence, interstitial cystitis, overactive bladder, and urinary tract infections, including acute and chronic cystitis**. The program maintains an active outreach component for health care providers, patients, and the public. The goal is to raise awareness about advances in the treatment and prevention of noncancerous urologic disorders in women to improve the quality of life for individuals with these conditions.

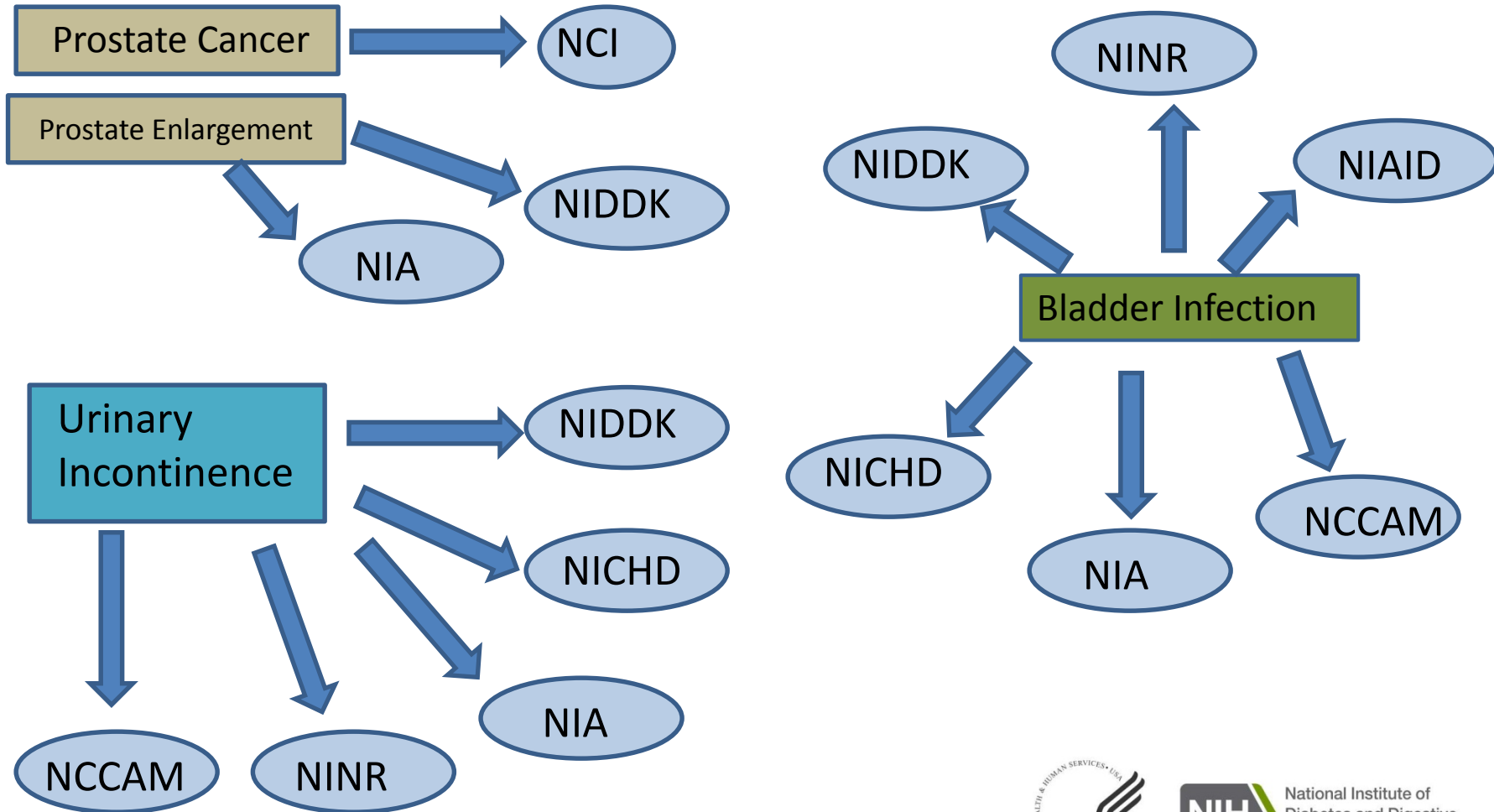


NIH 101

- Extramural Research Roles
 - Program Officers
 - Scientific Review Officers
 - Grants Management Specialists
- Funding Opportunity Announcements – NIH Guide
 - Unsolicited (PA)
 - Solicited (RFA)

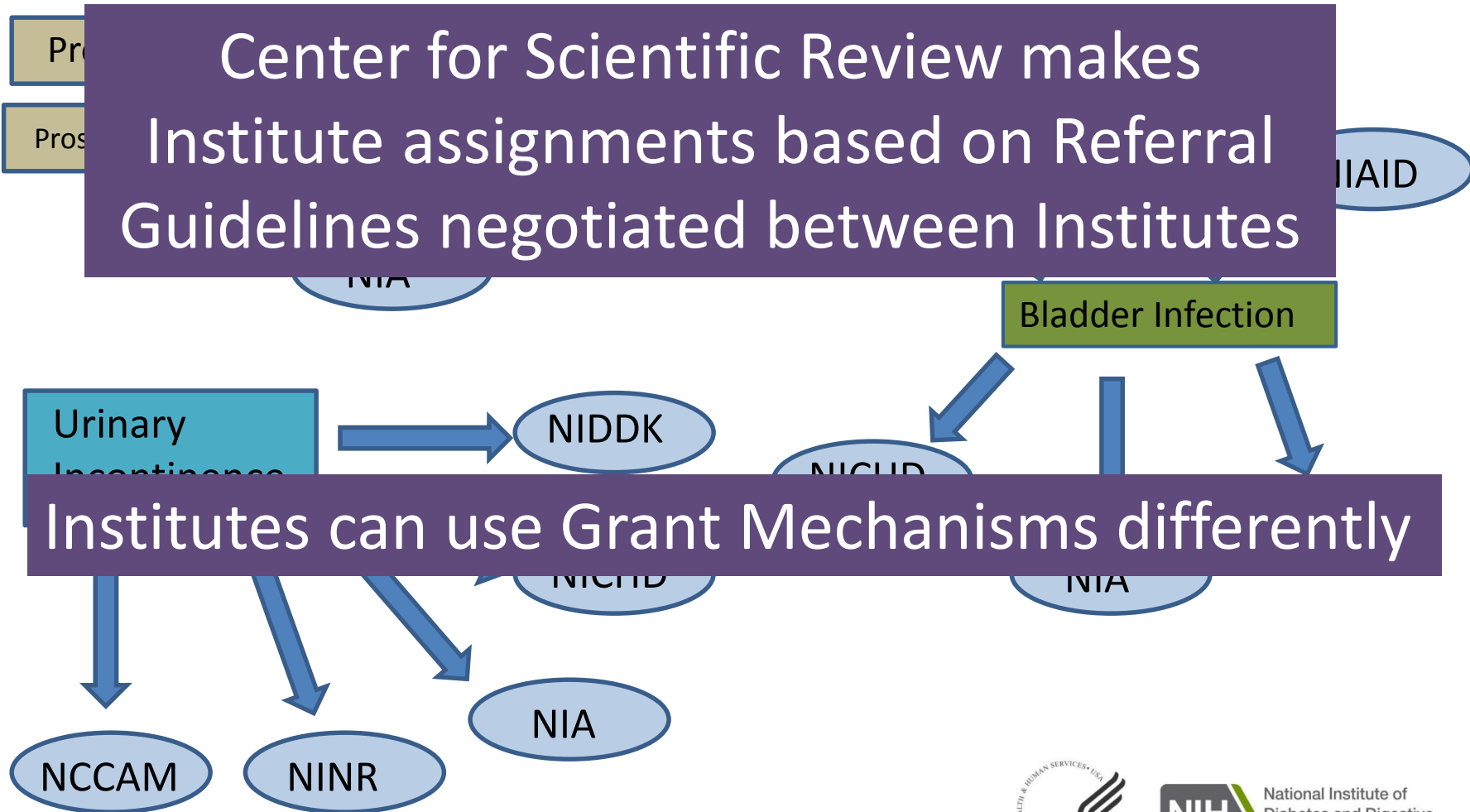


Assignment of Grants to Institutes



Assignment of Grants to Institutes

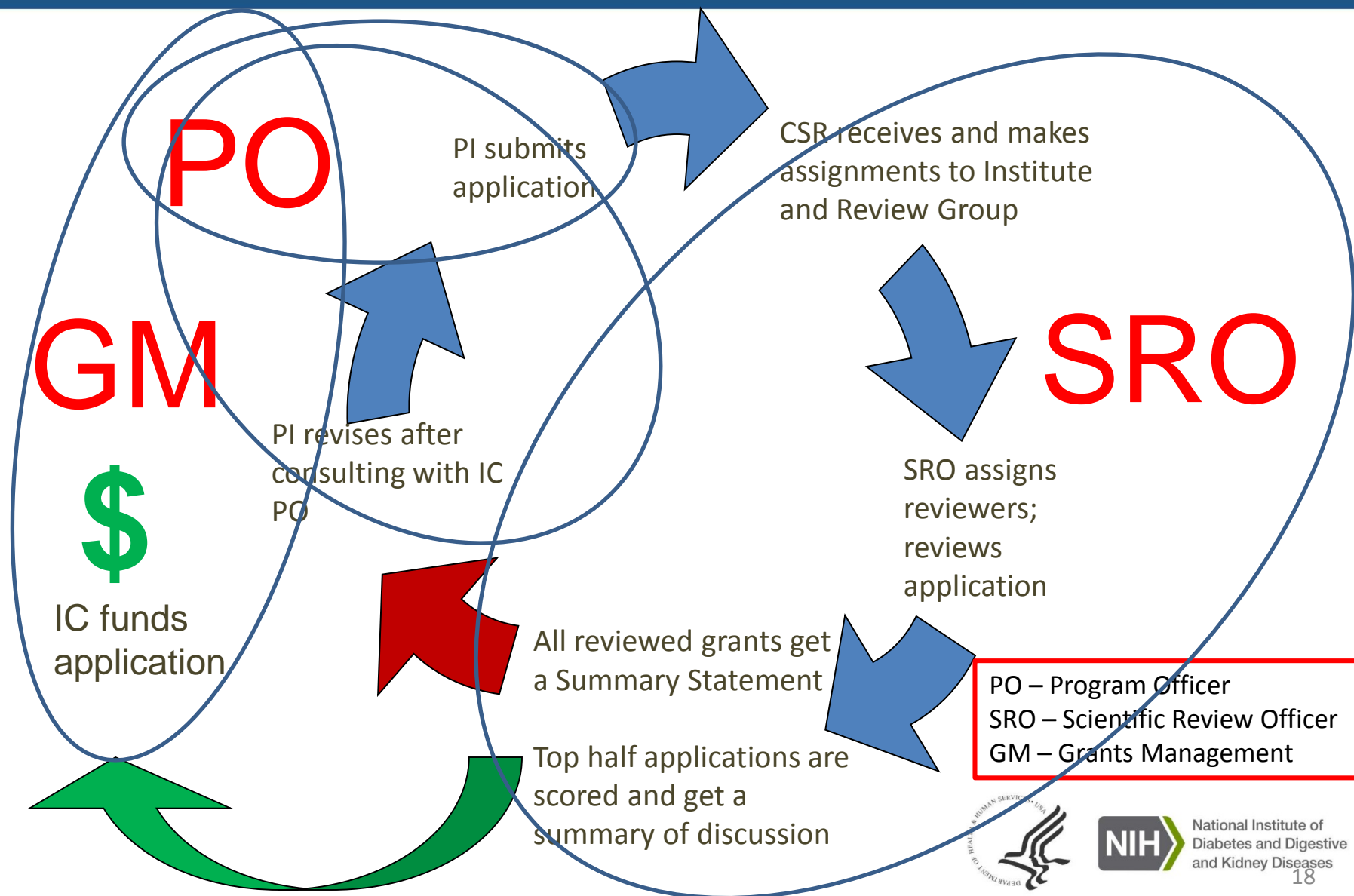
Center for Scientific Review makes
Institute assignments based on Referral
Guidelines negotiated between Institutes



Institutes can use Grant Mechanisms differently



Life Cycle of a Grant



Funding

- Pay line
- Special Emphasis Funds (within 10 points of pay line)
 - One year
 - Two year
 - Three year
- Division recommends grants for funding to our Council; Council reviews and concurs or has alternate suggestions
- NO guarantee of payment until Notice of Award goes out



Importance of R01s

- Currency of respect within NIH – for investigators and for research areas
- # of R01 applications determine whether an area has a standing integrated review group (aka study section)
- Important goal of all of our other funding opportunities to is build a research community that is competitive for R01 funding



NIDDK Urology Networks (U01)



PLUS
PREVENTION of
LUTS Consortium





MAPP
Multi-Disciplinary Approach to the
Study of Chronic Pelvic Pain

DEEP
PHENO-
TYPING
UCPPS

PRO



DEEP
PHENO-
TYPING
LUTS



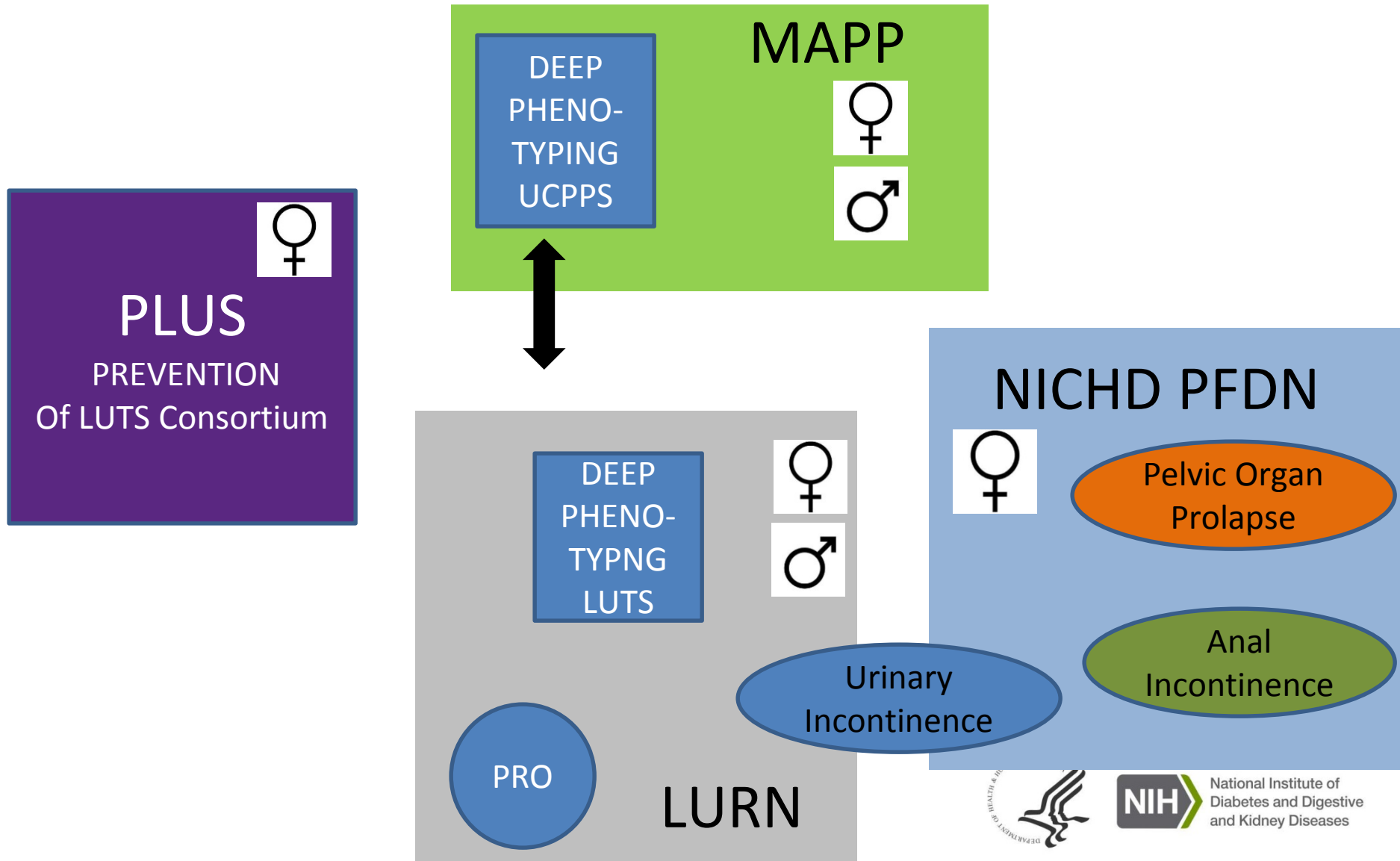
LURN
Symptoms of Lower
Urinary Tract
Dysfunction
Research Network

PRO

USDRN
Urinary Stone
Disease
Research Network

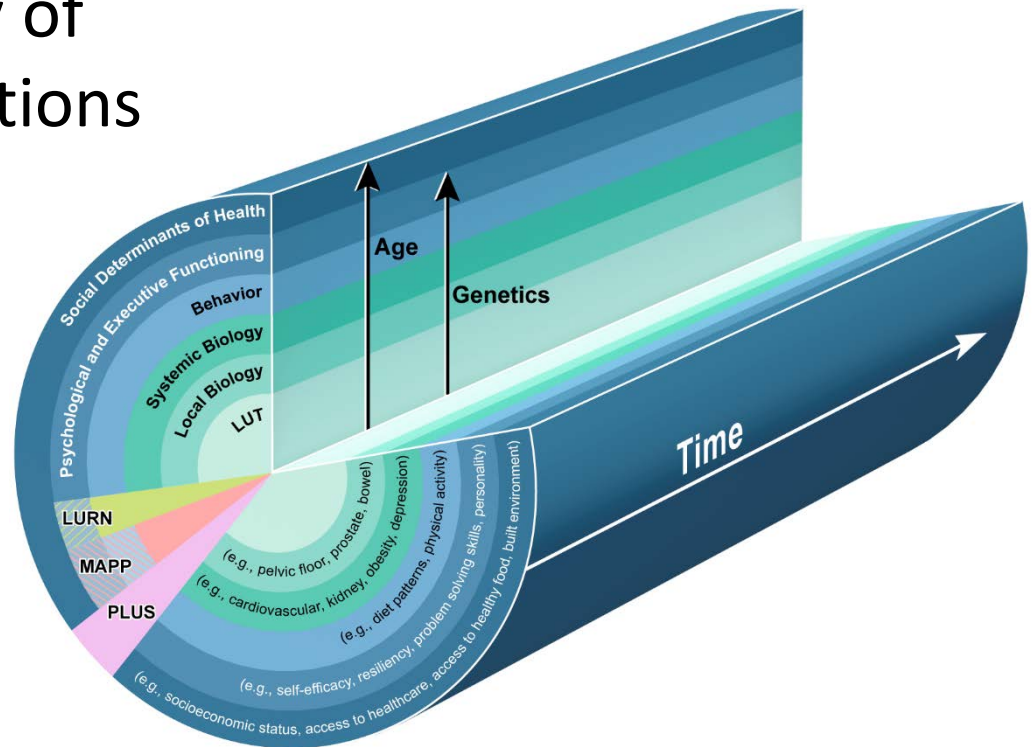


NIH "Bladder/Pelvic" Networks



What is NIDDK Interested in?

- Advancing a Comprehensive Approach to the Study of Benign Urologic Conditions
- Interdisciplinary Research Teams
- Increasing number of investigator-initiated grants (not in response to RFA)
- U01 funded investigators successfully competing for investigator-initiated grants



Continuum of Collaborative Research

- Unidisciplinary research



- Three cross-disciplinary research orientations



- Multidisciplinary

- Independent, Sequential, Divisional
- Exchange



- Interdisciplinary

- Joint, Interactive, Partnership
- Dialogue, Exchange, Hybridization, Complementary

- Transdisciplinary

- Integrative, Interdependent, Immergent
- Reciprocity, Discourse, Share Vocabulary, **EXTENDS**



Urology Program Directors' Meeting

December 7-9, 2016

Brings together

- Directors of the O'Brien Urology Centers and their project directors
- Directors of the Planning Centers for Interdisciplinary Research in Benign Urology (P20)
- Directors for the Multidisciplinary K12 Urologic Research (KURe) Career Development Program and their fellows.

to promote interactions between Centers and Programs and the sharing of resources.



Raising Awareness

- Talk to everyone you now about the importance of “pelvic research”
- Speak in plain language – make it relatable
- For conditions that have been “set aside” as life-style or quality of life issues, a top down approach from legislators is going to be required



National Institute of
Diabetes and Digestive
and Kidney Diseases



National Institute of
Diabetes and Digestive
and Kidney Diseases



National Institute of
Diabetes and Digestive
and Kidney Diseases

tamara.bavendam@nih.gov