



Paradise Dental Technologies

Passionate, Purpose Driven Design™



Hygiene ♦ Perio ♦ Restorative ♦ Surgical

PRODUCT CATALOG - EDITION 15.1

HYGIENE



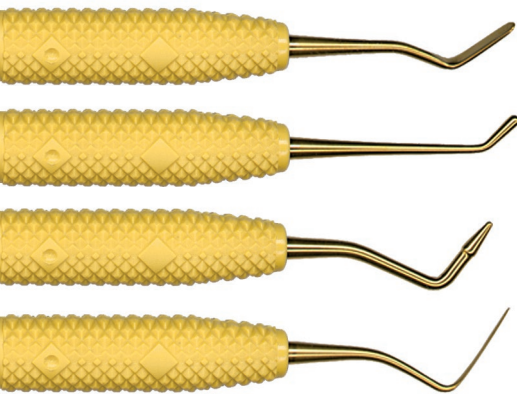
IMPLANT IMPRESSIONS



IMPLANT MAINTENANCE



COMPOSITE



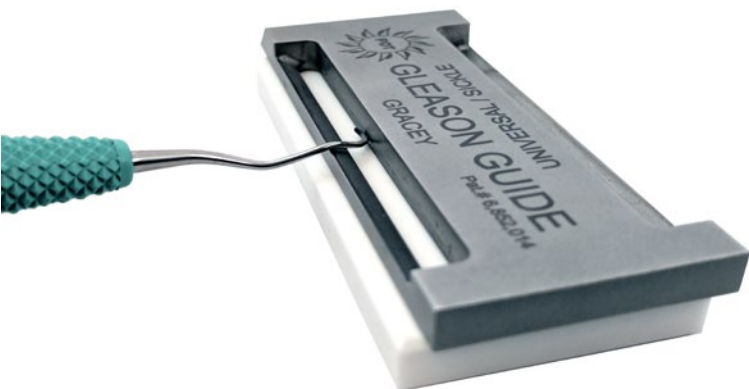
TISSUE GRAFTING



EXTRACTIONS



SHARPENING



DIAGNOSTIC



INSTRUMENT MANAGEMENT



SUTURING



TABLE OF CONTENTS

Signature Instruments	7
O'Hehir Curettes	11
Implant Maintenance	12
Amazing Gracey™	14
Universal Curettes	16
Scalers	17
Sharpening	18
Restorative Instruments	20
Diagnostic Instruments	22
Tweezers & Pliers	24
The Slade Blade™	25
Tissue Grafting Instruments	26
Tissue Grafting Kits	27
Scissors	28
Scalpel Handles	29
Bone Grafting Instruments	30
Implant Impression Tray	31
Extraction Forceps	32
Forceps & Hemostat	32
Luxating	33
Periotomes	33
Root Elevators	34
Bone Rongeurs	35
Crown Removal	36
Retractors	37
Needle Holders	37
Guides & Measuring	38
Rubberdam Accessories	39
Accessories	39
FlipTop™ Cassettes	40

ABOUT PDT



It is important to me that we play a part in your success. Success can be defined in many ways: health, happiness, caring, as well as wealth.

We continually strive to bring you the best products to assist you to be a successful, caring dental professional, keeping you healthy through ergonomics and the best quality with blade and product designs to keep your patients happy, healthy, and comfortable. Let's continue to grow together and provide long term patient success. As we all know the oral cavity is the gateway to overall health.

Together we can make a difference in countless lives around the world. We feel very blessed to have your support and look forward to continuing to serve you in the future.

All my best,

Linda J. Miller
CEO/Founder, PDT, Inc.

MASTER CRAFTSPEOPLE OF MONTANA

PDT, Inc. is not just another instrument company. Our foundation is a culmination of concepts developed through years of listening, observing, and innovating since CEO/Founder Linda Miller entered the dental industry in 1981. Initially starting in a two car garage, PDT is now known as a market leader and innovator of dental hand instruments. Our 100% USA and Germany made products are distributed worldwide.



As you enter our main manufacturing facility in Missoula, Montana, you will see a sign, "Beyond these doors the Finest Dental Instrument Craftspeople in the world apply their trade." PDT has an incredible team committed to quality of product and service. We work together to put your health, your wants, your needs, and those of your customers and patients first. We are here for you. Thank you for your tremendous support and understanding of our concepts, which continues to keep us the fastest growing dental instrument company in the world!

COMFORT ♦ QUALITY ♦ DURABILITY

Competitor's Steel

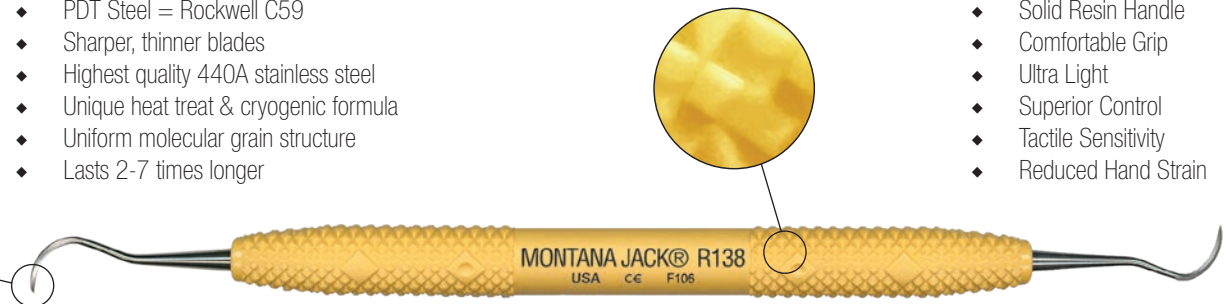
More brittle, accentuated grain lines, coarse molecules.

PDT Steel

Tougher, Stronger, Holds Edge Longer

- ♦ PDT Steel = Rockwell C59
- ♦ Sharper, thinner blades
- ♦ Highest quality 440A stainless steel
- ♦ Unique heat treat & cryogenic formula
- ♦ Uniform molecular grain structure
- ♦ Lasts 2-7 times longer

- ♦ Solid Resin Handle
- ♦ Comfortable Grip
- ♦ Ultra Light
- ♦ Superior Control
- ♦ Tactile Sensitivity
- ♦ Reduced Hand Strain

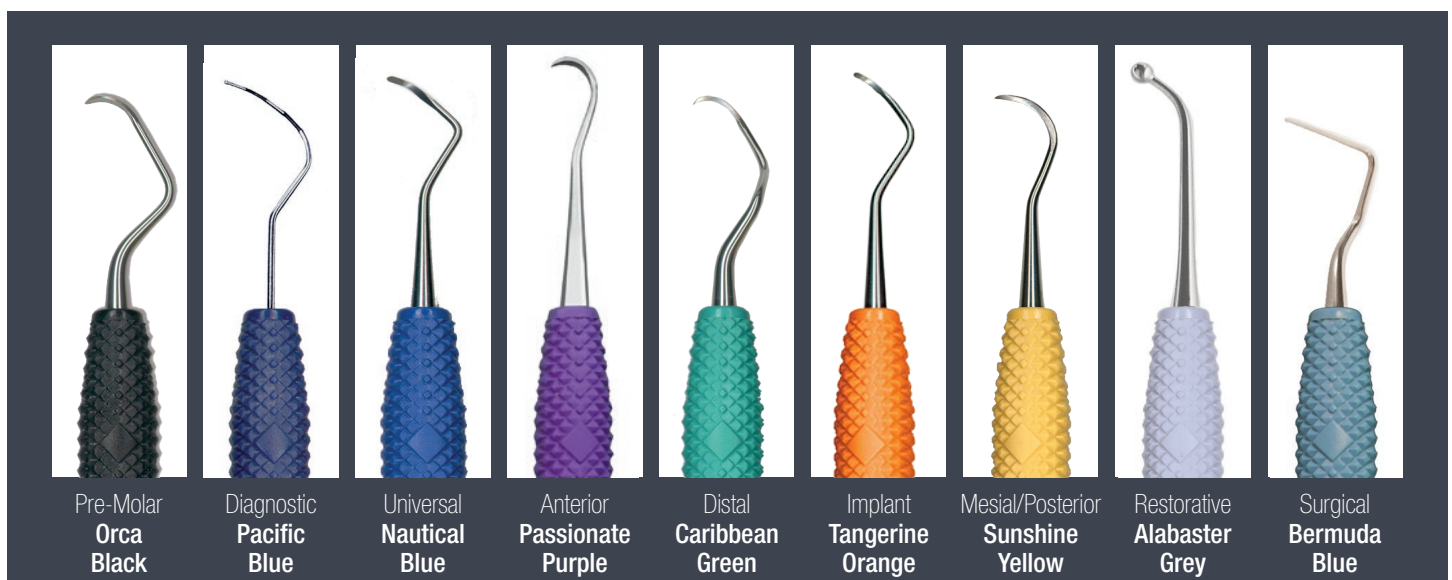


THE PDT DIFFERENCE

- ◆ All products are **handcrafted** by master craftspeople
- ◆ **100%** made in the USA and Germany
- ◆ **Ergonomic** handle designed alongside orthopedic surgeons, physical therapists, and dental professionals
- ◆ Extended knurling and handle shape provide a more comfortable grip with **less hand fatigue and pinch force**
- ◆ Wide, **10 mm diameter** handle design reduces muscle fatigue
- ◆ Solid, thermal resin handle allow instruments to weigh only **13 grams**, providing an ideal weight for regular use
- ◆ **Lightest, most tactile sensitive** instruments on the market
- ◆ **Harder & stronger steel** due to our proprietary heat treatment and unique cryogenic processing
- ◆ Instruments retain their **sharpness longer** due to the hardness of the steel
- ◆ Instruments stand up to resharpening and last **2-7 times longer** than our competitors
- ◆ Bold, innovative instrument designs developed with **practicing clinicians** based on their professional and patient needs
- ◆ PDT **blade size, angulation, curvature, and balance** give you and your patients the best experience possible



ANATOMICALLY COLOR CODED FASTER RECOGNITION & SETUPS





GIVE BACK AND GO GREEN WITH PDT

PDT strives to be conscious of the environment and give back on a global level.

For every 12 instruments sent to us, regardless of the manufacturer, we will send you a NO CHARGE* PDT hygiene instrument of your choice. *some restrictions apply

Our craftspeople selectively choose, then recondition any salvageable instruments to donate to non-profit organizations and over 400 missions worldwide annually. Any instruments that cannot be restored will be recycled.

Visit pdtdental.com/earthcare to see how you can make a difference!



Michelle Strange, RDH cleans a patients teeth in Uganda with PDT's Montana Jack®.



Kathryn Anderson, RDH smiles with a young patient in Jamaica after her first dental cleaning.



RDHs Sharon and Louise display their Montana Jacks® in Honduras.

PDT missions around the world



"Providing the skills to improve oral health in my community and globally is dear to my heart. On my global mission trips, I do not always have access to power scalers. The hand instruments I use have to work hard to overcome the tenacious calculus I encounter. When PDT donated instruments for my trip, I was blown away: Not only by their generosity, but also that the instruments stood up against that tenacious calculus and kept an edge longer than I could have ever imagined.

I was always a PDT fan, but now, after their generosity and seeing what their instruments can really do for me as a clinician, I am a forever user. Thank you PDT for helping me care for people all over the world!"

-Michelle Strange, RDH

Visit pdtdental.com/missions to request PDT instruments for your mission.

★ **Montana Jack® R138**

- ◆ The one and only Montana Jack® sickle scaler is ultra-light, thinner, tougher, harder, sharper, and still unmatched!
- ◆ Has the perfect contra-angle for the most optimal adaptation
- ◆ The very thin, sharp and durable blade provides convenient interproximal access
- ◆ Practicing clinicians report it accesses throughout the posterior region with less ergonomic stress and optimal patient comfort

THE #1 INSTRUMENT HYGIENISTS CANNOT LIVE WITHOUT!

★ **Montana Jack® Pink R138BC**

FOR EVERY MONTANA JACK® PINK PURCHASED, PDT WILL MAKE A DONATION TO THE CANCER RESEARCH INSTITUTE

★ **Montana Jack® Rigid R138R**

- ◆ All the great features of the Montana Jack®, with a thicker shank and blade to withstand more pressure, with less flexibility
- ◆ Great for tough debridement, cement removal, and interproximal carving

★ **Montana Jack® B-Ti R138T**

- ◆ The great features of the Montana Jack®, now available in Titanium for implant maintenance
- ◆ The perfect supplement to your R900 Wingrove™ Go-To Set
- ◆ Blades are uniquely processed, solid USA medical-grade titanium
- ◆ Does not scratch implants and can be sharpened on a dedicated stone
- ◆ Suggested for use on single implant posterior crowns
- ◆ Features a blunt tip as an additional protection when working with implants

★ **Queen of Hearts™ R144**

- ◆ Research has shown people with periodontal disease are twice as likely to suffer from cardiovascular/cerebrovascular disease
- ◆ The Queen of Hearts™ periodontal curette has 6 mm long, fine cutting edges for finishing with a completely smooth surface when root planing, bringing your patient one step closer to better overall health
- ◆ The blade has been balanced and rotated so the toe of the instrument can be inserted into a deep narrow pocket, minimizing tissue trauma and allowing comfortable universal access

FOR EVERY QUEEN OF HEARTS™ PURCHASED, PDT WILL MAKE A DONATION TO THE AMERICAN HEART ASSOCIATION

★ Jack B. Nimble® R130



- ◆ The Jack B. Nimble® is a small, contra-angled scaler with a continuous curved blade
- ◆ The blade is structured so the increased surface of the cutting edge comes in direct contact with the tooth surface when scaling
- ◆ Allows practitioners to apply positive lateral pressure when working in anterior/premolar regions
- ◆ The ultimate instrument for crowded, rotated, or lingual-version teeth
- ◆ Great for cement removal



★ Jack B. Nimble® Slim R130S



- ◆ All the great features of the Jack B. Nimble® with a slimmer blade
- ◆ Optimal for accessing crowded anterior teeth or working around orthodontia



★ H5-L5 R090



- ◆ PDT's H5-L5 has achieved one of the highest acceptance ratings by a leading evaluation group
- ◆ A 2-in-1 anterior instrument with an H5 straight sickle scaler on one end for deposit removal and interproximal access, and a Langer 5 on the opposing end for fine finishing
- ◆ The Langer 5 is shaped similar to an anterior Gracey but it is a double-sided universal curette used to increase efficiency and overall instrument application

★ H5-L5 Mini R092



- ◆ A 2-in-1 anterior instrument with an H5 straight sickle scaler on one end for deposit removal and interproximal access
- ◆ The opposing end features Langer 5 Mini for increased subgingival adaptation for narrow anterior anatomy

★ MT 4-5 R120



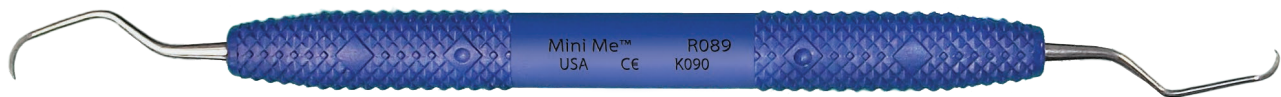
- ◆ Big brother to the 204S - similar adaptation and angle with a longer terminal shank and blade
- ◆ Rigid extended reach, yet thin enough for enhanced interproximal access

★ Nebraska 128-L5 Mini R093



- ◆ A 2-in-1 anterior instrument featuring both a scaler and a fine finishing Langer 5 mini curette
- ◆ Long Nebraska 128 sickle on one end is great for overlapped teeth and tight interproximal areas
- ◆ Langer 5 Mini is great for deep, narrow pockets

★ Mini Me R089



- ◆ A full anterior universal Langer 5 on one end and an anterior universal Langer 5 mini on the opposing end

★ Root Elevator Seldin 301 T102



- ◆ PDT's ergonomically advanced root elevator with specially designed handle that provides a firm, comfortable grip
- ◆ Available in a full range of tips including Cryer and Lindo-Levien (See page 30 for PDT's complete root elevator line)

★ Scalpel Handle, Adjustable in 7 Positions T705



- ◆ Adjusts to 7 different angles for better access in hard to reach areas
- ◆ Special grip designed for advanced ergonomic support and optimal precision
- ◆ Easily disassembles for convenient cleaning and sterilization

★ MT Explorer R170



- ◆ Same contra-angle as the Montana Jack®
- ◆ Durable spring tip provides convenient interproximal access
- ◆ Excellent for caries and calculus detection

MIRROR HANDLE

★ Cone Socket Mirror Handle R245



- ◆ Fits any standard cone socket screw-in mirror heads, also available to fit simple stem mirrors (R248)
- ◆ Features PDT's light weight, solid resin handle with mobility probe

ACE™ FURCATION PROBES

★ WRS ACE™ - UNC12 R215 (1-2-3-4-5-6-7-8-9-10-11-12)



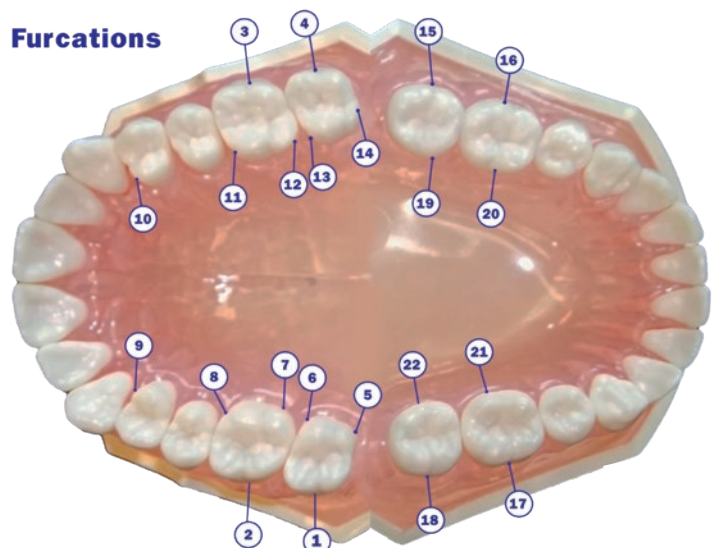
WRS ACE™ Probe UNC 12 has markings from 1-12 mm on the straight probe end

★ ACE™ - 12 SHORT R216 (3-6-9-12)



ACE™ Probe 12 Short has 3-6-9-12 mm markings on both ends

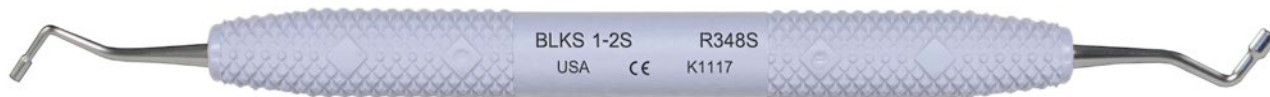
- ◆ The ACE™ Furcation Probes feature a thinner furcation probe design for greater patient comfort
- ◆ Flexible enough to reach the most difficult furcations
- ◆ The furcation end is etched with 3-6-9-12 markings
- ◆ When doing a crown lengthening procedure the ACE™ Furcation Probe UNC12 allows for a definitive measurement of depth
- ◆ Both instruments can be used for pocket probing as well as probing the furcation



*Comprehensive furcation exam using the ACE™ probe. Insert probe into the furcation locations as shown on the above graphic.

NEW PRODUCT LINES

RESTORATIVE



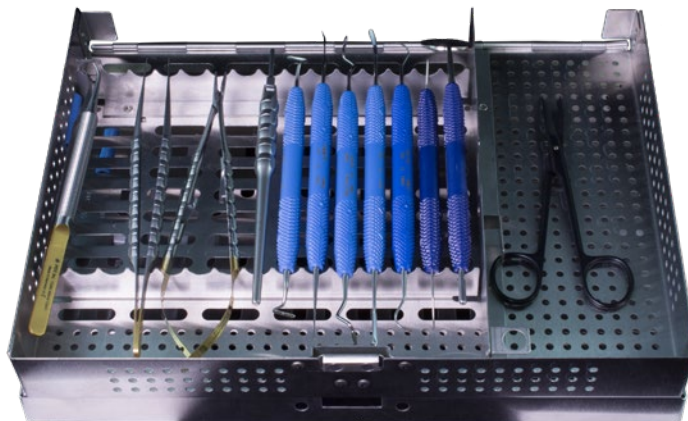
See page 20 for a full list of restorative instruments including discoid-cleoids, carvers, burnishers, pluggers, and cord packers

THE SLADE BLADE™



See page 25 for a full list of Slade Blade instruments for the removal of granulated tissue post extraction

TISSUE GRAFTING KITS



See page 27 for full list of Tissue Grafting Kits including everything you need for tissue grafting procedures

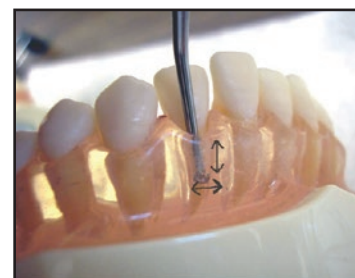
O'HEHIR NEW MILLENNIUM™ CURETTES



Trisha E. O'Hehir, RDH, BS



- ◆ Unique scoop blades that cut a 270° perimeter
- ◆ Push, pull in any direction
- ◆ Three dimensional scaling and root planing
- ◆ Allows clinician to reach areas missed by traditional curette blades
- ◆ Perfect for flutings, furcations and line angles
- ◆ Designed for access and effectiveness
- ◆ No tissue trauma



WINGROVE™ TITANIUM IMPLANT INSTRUMENTS

BLADES ARE SOLID USA MEDICAL-GRADE TITANIUM



Susan Wingrove, RDH

Get all three specially designed instruments:

- ◆ Wingrove™ B5-6 Ti R661 ★
- ◆ Wingrove™ L3-4 Ti R680 ★
- ◆ Wingrove™ N128-L5mini Ti R693 ★

PLUS a

- ◆ T216 EasyView™ probe ★
- ◆ T005A-F FlipTop™ cassette ★
- ◆ A dedicated Diamond Head Ceramic Stone™ in your R900 “Go-To” set.



The Wingrove™ Go-To Set features the best instrument selection to efficiently adapt to any implant patient's needs. Narrow-based Bulbous Crowns ◆ Wide-based Crowns ◆ Locator Abutments ◆ Hader Bars ◆ Exposed Threads ◆ Cement Removal

What clinicians are saying...

“I am more confident with cleaning hard-to-access implants, with reduced concern about scratching implants.”

-Susan Sander, RDH

“These scalers have improved my ergonomics because of the handle width, (light) weight, sharpness of scaler, and because of the shape of the blade.”

-Terrie Moncourtois, RDH

“(I can provide) the best implant care now that I can easily access the site with a sharp instrument that is comfortable and light to use.”

-Brenda Buergi, RDH

SHARPENING TITANIUM

PDT's uniquely processed solid titanium blades can be sharpened!

Must use a dedicated stone, T061 Diamond Head Ceramic Stone™ is included with R900 Wingrove set or sold separately (see page 18).



1. Place instrument in stop position



2. Bring terminal shank to rest position

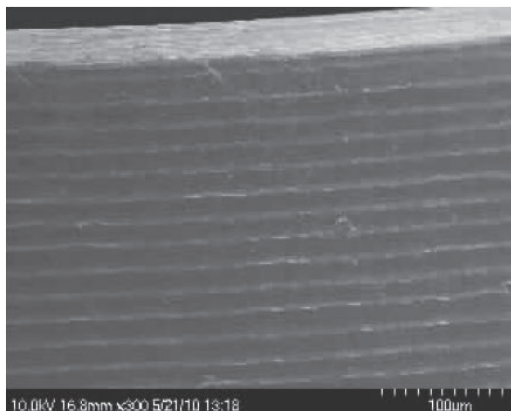


3. Glide blade side to side

Make sharpening consistent and easier using the Gleason Guide!

PDT's uniquely processed solid titanium does not scratch implants!

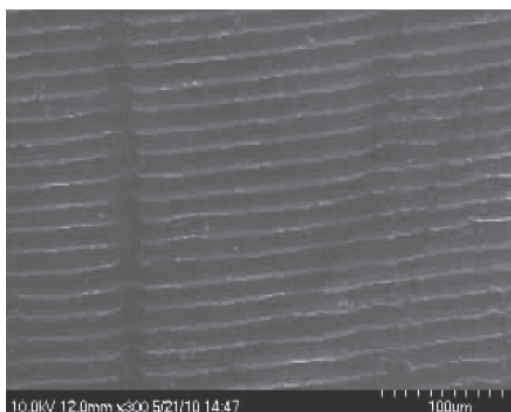
Microscopic view of an implant before and after a competitor plastic implant scaler, a competitor Ti implant scaler and using a PDT Ti Wingrove™ Scaler. Photos courtesy of Dr. J. Driver UM Division of Biological Sciences 2010.



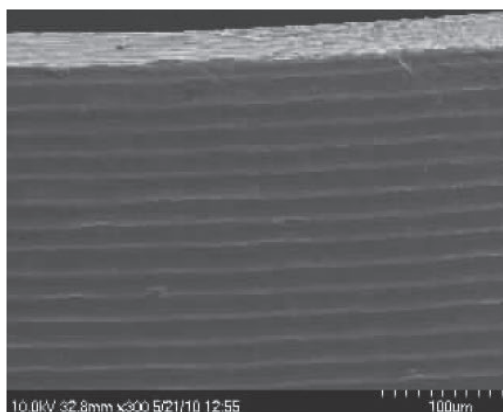
Sybron implant control photo



Debris left from plastic scaler



Competitor hardened Ti Scaler



No effect after PDT Ti scaler

MONTANA JACK® B-Ti



★ **Montana Jack® B-Ti R138T**

- ◆ The great features of the Montana Jack®, now available in Titanium for implant maintenance
- ◆ The perfect supplement to your R900 Wingrove™ Go-To Set
- ◆ Suggested for use on single implant posterior crowns
- ◆ Features a blunt tip as an additional protection when working with implants

TITANIUM AMAZING GRACEY™ MICRO MINIS



Gracey 1-2 Micro-Mini Ti R694



Gracey 11-12 Micro-Mini Ti R695



Gracey 13-14 Micro-Mini Ti R696

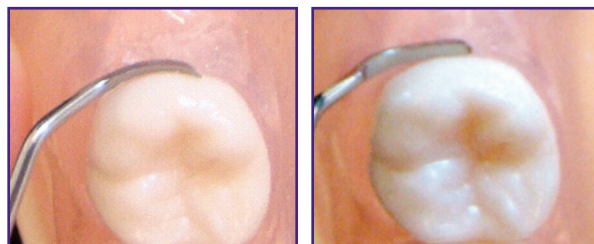
- ◆ Micro Mini blades are 20% thinner and 1/2 the blade length of the Gracey Mini with an extended terminal shank
- ◆ Thin blades are strong enough to remove calculus and cement around implants

AMAZING GRACEY™

Our unique approach to design and durable, 100% USA-made materials and manufacturing capabilities has enabled us to significantly improve the traditional Gracey design in a way you can easily see and experience for yourself. PDT's Amazing Gracays™ are designed for easier adaptation to the tooth surface with more efficient contact! The practitioner uses fewer strokes resulting in less stress on both the patient and the professional, reducing patient chair-time.

PDT AMAZING GRACEY™ with a continuous curve

- ◆ Entire blade hugs the tooth
- ◆ More efficient tooth contact
- ◆ Requires fewer strokes
- ◆ Increased comfort for patient and practitioner



LEADING COMPETITOR with a traditional straight blade

- ◆ Must rotate the blade
- ◆ Only 1/3 of blade makes contact
- ◆ Straight blade distends tissue
- ◆ Requires more strokes

- ◆ Highest quality 440A stainless steel
- ◆ Unique heat treat and cryogenic formula

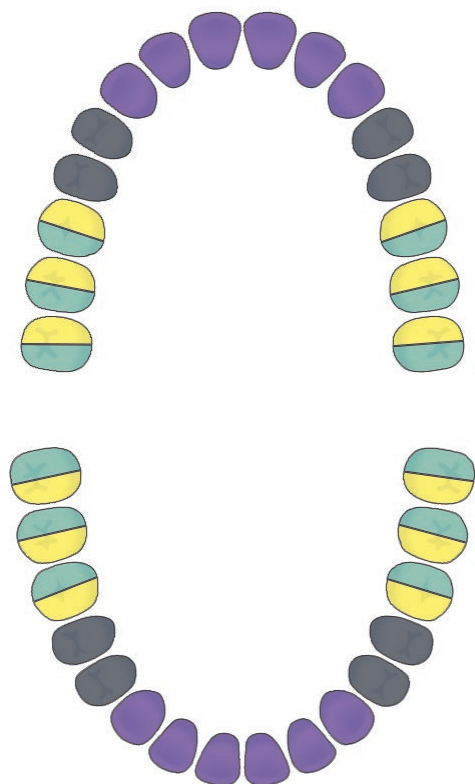
- ◆ Ultra light, solid resin handle
- ◆ Ultimate tactile sensitivity

- ◆ Color-coded for faster recognition and set-ups!



- ◆ Sharper, harder, tougher blades
- ◆ Holds edge longer, needs less sharpening
- ◆ Longer instrument life
- ◆ Continuous curve of blade adapts to tooth

- ◆ Comfortable large diameter handle
- ◆ Exclusive extended knurling
- ◆ Superior control and torque
- ◆ No torque on your hand since blade immediately adapts to tooth



ANTERIOR



PRE-MOLAR



MESIAL



DISTAL

**ANATOMICALLY COLOR CODED
FOR FASTER RECOGNITION & SETUPS**

AMAZING GRACEY™



Gracey 00 R001



Gracey 5-6 R020



★ Gracey 13-14 R028



★ Gracey 1-2 R016



★ Gracey 7-8 R022



Gracey 15-16 R030



Gracey 3-4 R018



Gracey 9-10 R024



Gracey 17-18 R032



★ Gracey 11-12 R026

QUADRANT - SPECIFIC GRACEYS



Gracey 11-14 R034



Gracey 12-13 R036

These quadrant - specific Gracey designs help with efficiency by reducing the number of times instruments need to be picked up and put down.

TITANIUM IMPLANT MAINTENANCE SPECIFIC GRACEYS



Gracey 1-2 Micro-Mini Ti R694



Gracey 11-12 Micro-Mini Ti R695



Gracey 13-14 Micro-Mini Ti R696

GRACEY DEFINITIONS

R =Rigid	Large diameter shank makes the instrument stiffer, less flex, standard blade
ERM =Extended Reach Mini	Terminal shank is 5mm longer, mini blade is half the length of standard blade
ERM R=Extended Reach Mini Rigid	Larger, stiffer, terminal shank is 5mm longer, mini blade is half the length of standard gracey
ER =Extended Reach	Terminal shank is 5mm longer; Amazing Gracey blade is 3.5 - 4mm
ERR =Extended Reach Rigid	Larger diameter terminal shank is 5mm longer; instrument is stiffer with less flex
ERMM =Extended Reach Micro Mini	20% thinner blades and 1/2 the blade length with an extended terminal shank
ERMM Ti =Extended Reach Micro Mini Titanium	20% thinner blades and 1/2 the blade length with an extended terminal shank in Titanium

INSTRUMENT	ITEM #	R	ERM	ERM	ER	ERR	ERMM	ERMM Ti
Gracey 00	R001	R001R						
Gracey 1-2 ★	R016	R016R	R010				R011	R694
Gracey 3-4	R018							
Gracey 5-6	R020	R020R	R003					
Gracey 7-8 ★	R022	R022R	R004	R004R			R012	
Gracey 9-10	R024		R005	R005R				
Gracey 11-12 ★	R026	R026R	R006	R006R	R042	R042R	R013	R695
Gracey 13-14 ★	R028	R028R	R007	R007R	R043	R043R	R014	R696
Gracey 15-16	R030	R030R	R008	R008R	R044			
Gracey 17-18	R032	R032R	R009					
Gracey 11-14 Quadrant Specific	R034	R034R			R046			
Gracey 12-13 Quadrant Specific	R036	R036R			R047			

UNIVERSAL CURETTES



Barnhart 1-2 R060



McCalls 17S-18S R072



Barnhart 1-2 Rigid R060R



Rules 3-4 R076



★ **Barnhart 5-6 R061**



Younger-Good 7-8 R077



★ **Columbia 13-14 R064**



Langer 1-2 R079
Also available in Mini R082



Columbia 2L-2R R066



Langer 3-4 R080
Also available in Mini R083



★ **Columbia 4L-4R R067**



Langer 5-6 R081
Also available in Mini R084



McCalls 13-14 R069



Langer 17-18 R087
Also available in Mini R088



McCalls 13S-14S R070



Mini Me™ R089



McCalls 17-18 R071



23A R099



★ **Queen of Hearts R144**
See page 7 for more information

What clinicians are saying...

“This is the sharpest curette I have ever used. The tip is outstanding for removal of granulation tissue and calculus in molar furcations.”

-Dr. Robert Horowitz, Periodontist NYU College of Dentistry;
Private Practice, Scarsdale, NY



**FOR EVERY QUEEN OF HEARTS™ PURCHASED,
PDT WILL MAKE A DONATION TO THE AMERICAN HEART ASSOCIATION**

★ Most Popular Items

ANTERIOR SCALERS



★ H5-L5 R090



N1 R096



NEB 128-33 R115



NEB 128-L5 R091



★ H6-7 R110



SE NEB 128 R116



★ H5-L5 Mini R092



H5-33 R111



★ Jack B. Nimble® R130



★ N128-L5 Mini R093



U15-33 R113



★ Jack B. Nimble® Slim R130S



NEB 128 R114

POSTERIOR SCALERS



★ MT 4-5™ R120



Micro Sickle R134



★ Montana Jack® R138



J 34-35 R125



★ 204S R135



★ Montana Jack® Rigid R138R



Cattoni 107-108 R129



204SD R136



N2 R139



204 IUFW R133



★ Montana Jack® R138BC



220 R142



23 (Pointed Toe) R098



★ 23 (Pointed Toe) Slim R098S

MACFARLANE LINE



MF0-1 R121



*MF6-7 R148



MF2-3 R122



*MF8-9 R149

*Excellent for carving composite & carefully scaling tenacious calculus with Tungsten Carbide blade.



Ultimate Edge™ Sharpening Kit with Diamond Head Ceramic Stone T066 ★



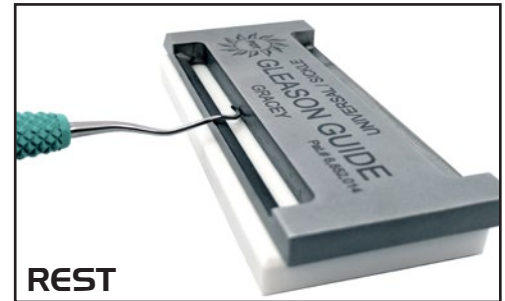
Ultimate Edge™ Transformation Kit T067



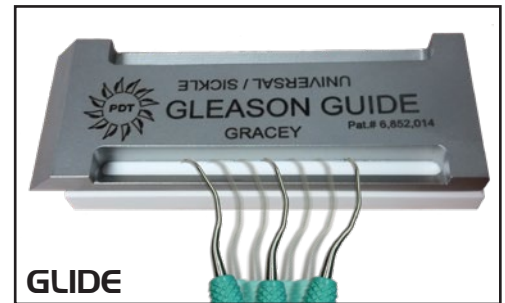
Ultimate Edge™ Kit with Transformation Stone T068



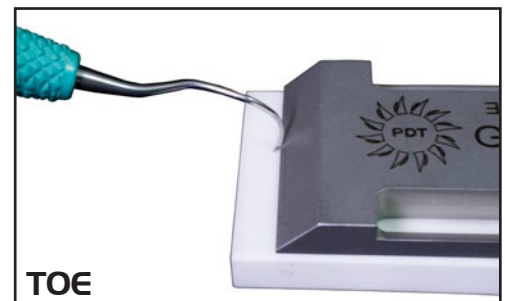
1. Place instrument in stop position



2. Bring terminal shank to rest position



3. Glide blade side to side to sharpen



To shape the toe, keep the instrument face parallel with the beveled edge then pivot the heel in an arc against the stone.

THE FASTEST, EASIEST, AND MOST ACCURATE WAY TO SHARPEN YOUR INSTRUMENTS!



Roger Gleason

THE GLEASON GUIDE™



A TIP FROM ROGER GLEASON

You will find the PDT GLEASON GUIDE easy to use and provides excellent results. Mark the edge of the instrument being sharpened with a “Sharpie”. In doing so, you can monitor your progress by observing where the mark of the “Sharpie” wears off during the sharpening process. **Stay Sharp My Friends**

Need Help Sharpening? Learn from PDT CEO Linda Miller



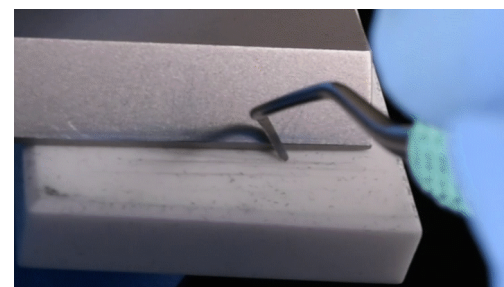
Visit pdt dental.com/sharpening for sharpening instructional videos!



Sharpen your Montana Jack®



Use a PingRing™ to test your edge



Shape the toe of a Gracey 13-14

RESTORATIVE

- ◆ Highest quality 440 stainless steel
- ◆ Solid ultralight resin handle
- ◆ Ultimate tactile sensitivity
- ◆ Superior control

Discoid-Cleoids



3-6 DC R269



4-5 DC R270



89-92 DC R271

Carvers



Interproximal Carver Off Angle (IPC OA) R282



Interproximal Carver (IPC) R283



Hollenback 1/2 3 R284



Hollenback 3 R285

Burnishers



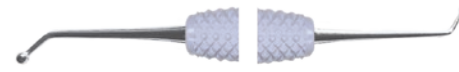
Calcium Hydroxide Placement R336



Burnisher 18 R329



Hollenback 6 R331



Burnisher 26/27S R332



Burnisher 27/29 R333



Ladmore 3 R334



Acorn 21B R335

Pluggers



Blacks Plugger 0/1 R347



Blacks Plugger 0/1 Serrated R347S



Blacks Plugger 1/2 R348



Blacks Plugger 1/2 Serrated R348S



Backaction Plugger 11/12 R349



Backaction Plugger 11/12 Serrated R349S

RESTORATIVE

Cord Packers



113S Off Angle Serrated Cord Packer R362S
Also available 113 Off Angle Cord Packer R362



113 Straight Cord Packer R363



113S Straight Serrated Cord Packer R363S

Hatchet



8-9 Hatchet R416

Titanium Nitride Coated Composite Instruments



G3 Thin R287



G4 Thin Mini R288



★ **CSS-2 R514**



CSS-5 R526



★ **IPC-T R534**



★ **CSS-3 R518**



CSS-6 R530



★ **IPC-L R538**



CSS-4 R522

The gold standard for composite sculpting instruments. Material won't stick and is easy to manipulate due to the titanium nitride coating.



8A R542

DrV™ Composite Instruments



★ **DrV™ 1-2 R560**



An all-encompassing set of highly-polished composite instruments, including various placement and occlusal forming instruments.



DrV™ 5-6 R562



★ **DrV™ 3-4 R561**



DrV™ 7-8 R563



Tofflemire Matrix Band Retainer T787

DIAGNOSTIC

- ◆ Durable, thin spring steel tips
- ◆ Convenient interproximal access
- ◆ Solid ultralight resin handle
- ◆ Ultimate tactile sensitivity
- ◆ Tensile strength and flexibility
- ◆ Caries, calculus, and tooth irregularity detection



★ **MONTANA EXPLORER R170**



★ **Explorer 5 R166**



Probe WHO (PSR) R197
(.5-3.5-5.5-8.5-11.5mm)



PR UNC 12-WHO R210



★ **Explorer 11-12 R167**



Probe UNC 15 R198
(1-2-3-4-5-6-7-8-9-10-11-12-13-14-15mm)



WRS ACE™ - UNC 15 R214



Explorer 2 R168



Probe UNC 12 R199
(1-2-3-4-5-6-7-8-9-10-11-12mm)



WRS ACE™ - UNC 12 R215
(left:3-6-9-12mm) (right:1-2-3-4-5-6-7-8-9-10-11-12mm)



Explorer 11-12 ER R169



Probe WHO - UNC 15 R200



★ **ACE™ 12 Short R216**
(left: 3-6-9-12mm) (right: 3-6-9-12mm)



TUFTS 17-23 R171



Probe UNC 15- CPITN R201



★ **Explorer 23/PROBE12 R223**



★ **Explorer 23 R183**



Probe Nabers 2 R205
(3-6-9-12mm)



Explorer 23/PROBE OW R224



Probe 11 R194
(3-6-8-11mm)



OW Goldman-Fox R206
(1-2-3-5-7-8-9-10mm)



Explorer 23/PROBE WHO R225



★ **Probe 12 R195**
(3-6-9-12mm)



Probe Baylor 1-2 R207
(3-6-9-12mm)



Explorer 23/UNC 15 R226



Probe OW R196
(1-2-3-5-7-8-9-10mm)



Explorer 23/UNC 12 R227

CONE SOCKET MIRROR HANDLE



Mirror #5 (15/26") T050 with Cone Socket Mirror Handle R245

Ideally weighted, large diameter, ergonomic cone socket mirror handle with mobility probe



Mirror #5 (15/16") T050
Front Surface Rhodium Coated, Cone Socket



Mirror #4 (7/8") T051
Front Surface Rhodium Coated, Cone Socket



Cone Socket Mirror Handle R245
Available In Simple Stem R248



Cotton Pliers T043
Single-Piece Construction - No Joints To Fail!



Locking Cotton Pliers T045



Tweezers College T040
Single angle tips



Tweezers Meriam T042
Double angle tips

EASYVIEW™ PROBES



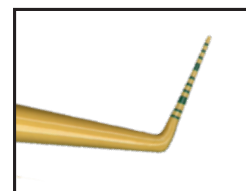
- ◆ Greater patient comfort
- ◆ Follows the contour of the tooth
- ◆ Bright and easy to read markings



EasyView™ Probe T212
(3-6-9-12mm)



EasyView™ Probe T214
(3-5-7-10mm)



★ **EasyView™ Probe T216**
(1-2-3-4-5-6-7-8-9-10-11-12mm)

TWEEZERS & PLIERS



Tissue Pliers Adson T080



Tissue Pliers Adson (with tooth) T081



Tissue Pliers Semken-Taylor 15 cm T082



Tissue Pliers Semken-Taylor 15 cm (with tooth) T083



Articulating Paper Forceps Miller T046



Suture Pliers Corn T084

With a loop to hold the soft tissue and direct the needle through the loop



For handling Titanium implants, screws, and pins without damaging them.



Titanium Tweezers T044



Tips are diamond coated to increase grip.



★ Micro Surgical Corn Suture Plier, Diamond Dusted T085



Micro Pliers Straight 17.5 cm T086



Micro Pliers Straight 17.5 cm Diamond Coated T087

Tips are diamond coated to increase grip



Scott Froum, DDS

"I created these instruments based on the need I observed from my own clinical experiences as well as discussions with other dentists. Basic sentiment was that there was a lack of instruments that efficiently removed granulation tissue post extraction from extraction sockets." -Scott Froum, DDS



Slade Blade 1 R432
Anterior Narrow

Smooth Cutting Edge

Serrated End



Slade Blade 2 R433
Anterior Wide

Smooth Cutting Edge

Serrated End



Slade Blade 3 R434
Posterior Narrow

Both Ends Serrated



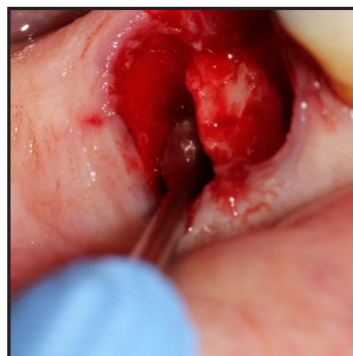
Slade Blade 4 R435
Posterior Wide

Both Ends Serrated



Slade Blade 5 R436
Posterior Wide (without Serrations)

Smooth Cutting Edges



The serrated Slade Blade efficiently removes granulation tissue post extraction.



Thorough removal of cystic infected tissue leaves a clean socket in preparation of an implant placement.

TISSUE GRAFTING



2 mm Periosteal Elevator R442

To detach and elevate the periosteum from the bone or loosen gingival tissues



3 mm Periosteal Elevator R443

To detach and elevate the periosteum from the bone or loosen gingival tissues



End Cutting Intrасulcular Knife R444

To perform incisions when removing or recontouring soft tissue or excising interproximal tissue



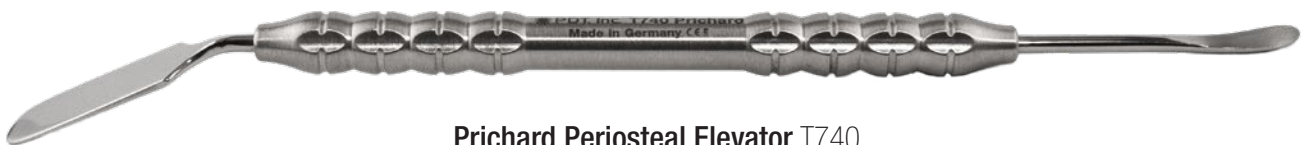
Modified Orban Knife R445

To perform lateral dissection without damaging the sulcular margin



Lucas 86 R437

Endontic dental blade designed for the debridement of tooth sockets or cyst removal



Prichard Periosteal Elevator T740

One cutting side and one retractor side

To separate the soft tissue from the bone, prepare and hold the flap



Hemingway Spoon Pliers T862

Two semi-sharp spoon-like tips to grasp and remove the soft tissue after the use of a Keyes Tissue Punch



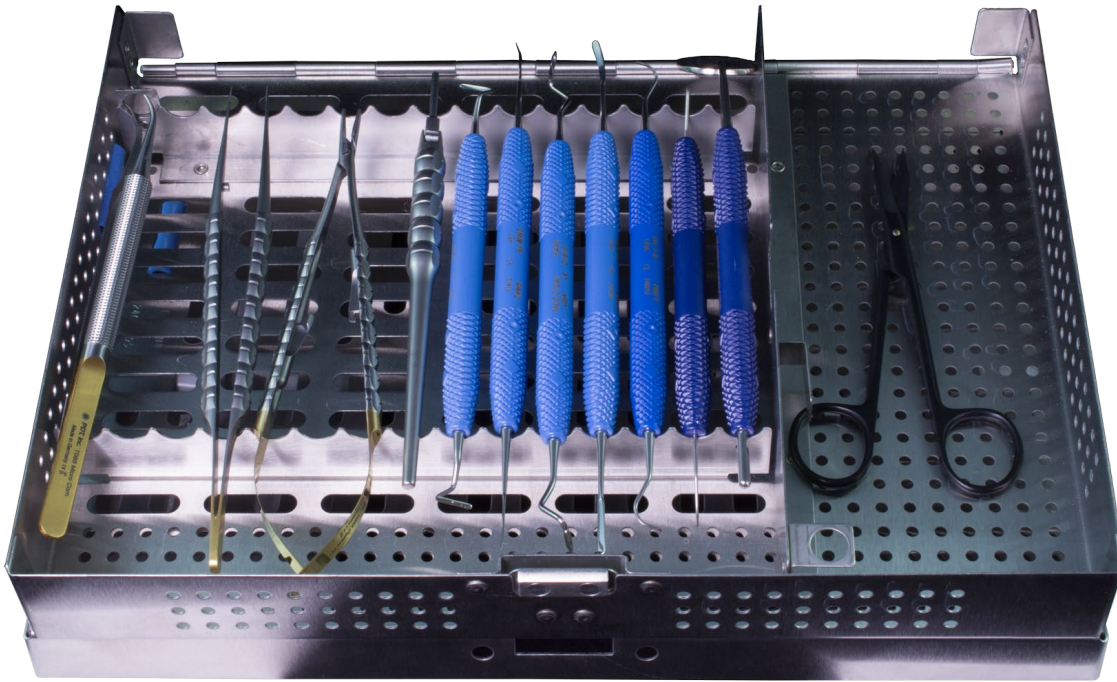
**Tissue Punch,
Keyes 4 mm T859**



**Tissue Punch,
Keyes 5 mm T860**



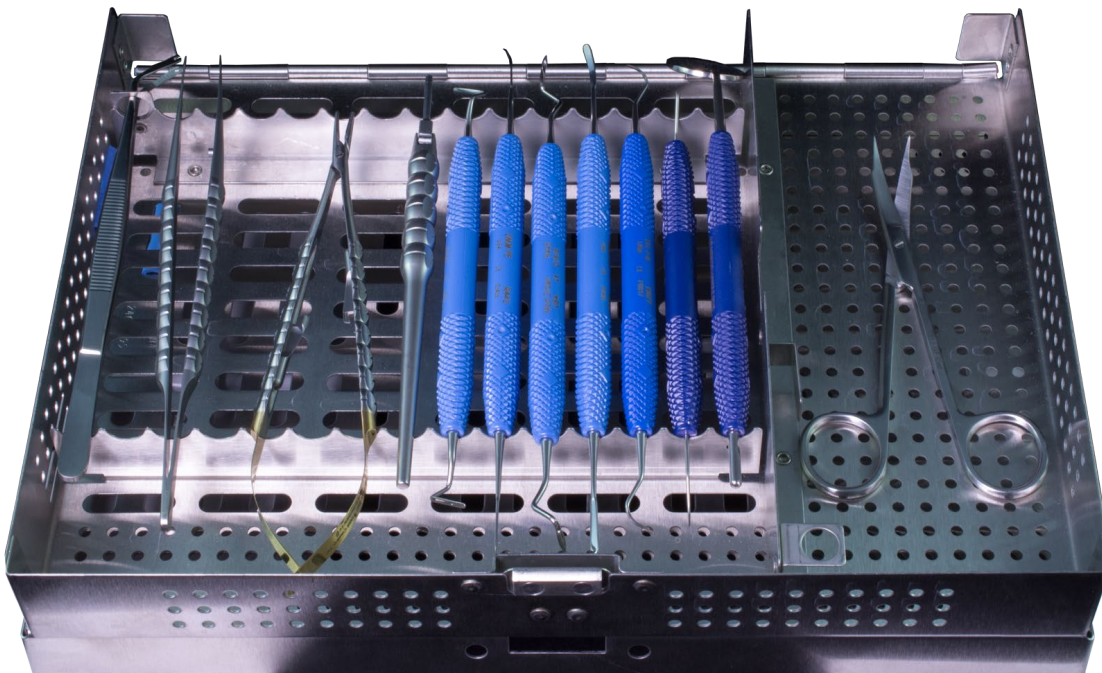
**Tissue Punch,
Keyes 6 mm T861**



- Diamond Tissue Grafting Kit:**
 T085 Suture Pliers Corn, Diamond Dusted
 T087 Micro Pliers Straight, Diamond Coated
 T088 Needle Holders Castroviejo, 17.5cm
 T705 Adjustable Scalpel Handle
 T815 Goldman-Fox Curved 12.5cm Black
 R442 2 mm Periosteal Elevator
 R443 3 mm Periosteal Elevator
 R444 End Cutting Intralucular Knife
 R445 Modified Orban Knife
 R077 Younger-Good 7-8
 R245 Mirror Handle
 T050 Mirror #5
 R226 Explorer 23/UNC 15
 T015E-F FlipTop™ Cassette

Diamond Tissue Grafting Kit R926

Combining PDT's signature focus on ergonomic instrument design and high-quality manufacturing techniques, the Diamond Tissue Grafting Kit and Tissue Grafting Kit include all the hand instruments you will need for minimally invasive soft tissue grafting procedures, including soft tissue augmentation, vestibular extension, root coverage, ridge augmentation, and stabilization of mobile marginal tissue.



- Tissue Grafting Kit:**
 T084 Suture Pliers Corn
 T086 Micro Pliers Straight
 T088 Needle Holders Castroviejo, 17.5cm
 T705 Adjustable Scalpel Handle
 T813 Goldman-Fox Curved 12.5cm
 R442 2 mm Periosteal Elevator
 R443 3 mm Periosteal Elevator
 R444 End Cutting Intralucular Knife
 R445 Modified Orban Knife
 R077 Younger-Good 7-8
 R245 Mirror Handle
 T050 Mirror #5
 R226 Explorer 23/UNC 15
 T015E-F FlipTop™ Cassette

Tissue Grafting Kit R927

SCISSORS

Shown at 50% size



★ Iris Curved 11.5 cm T800



Goldman-Fox Curved
12.5 cm T813



La-Grange
11.5 cm T820



★ La-Grange 11.5 cm
SuperCut T821
One gold ring for easy
identification as SuperCut



★ Iris Curved 11.5 cm Black
T801



Goldman-Fox Curved
12.5 cm Black T815



La-Grange
11.5 cm Black T822

Black Ceramic Coated Scissors
Do not reflect light and are coated for
increased strength and edge durability.
Approximate hardness is 85 Rockwell C.



★ Metzenbaum Pointed,
Curved 14.5 cm T808

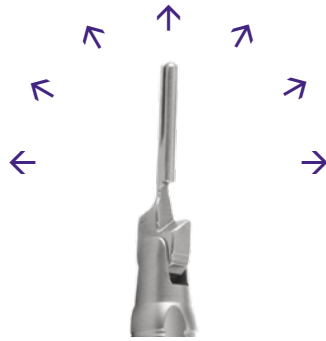


Ligature
13 cm T816
Hook on end to grasp suture



Beebe Crown Curved
10.5 cm T804
To cut crowns or bite guards

SCALPEL HANDLES



★ Scalpel Handle, Adjustable in 7 Positions T705

Adjusts to 7 different angles for better access to hard to reach areas
Easily disassembles for cleaning and sterilization



★ Scalpel Handle, Ejectable Blade T706

Single motion sliding action ejects the blade, eliminating the need to touch the blade
Reduces the risk of percutaneous injury
Easily disassembles for cleaning and sterilization



Scalpel Handle T704



Micro Scalpel Handle T703

For use with micro scalpel blades

BONE GRAFTING

Shown at 50% size



Bone Aspirator T840

Attaches to slow speed suction line to collect bone material
Comes with one filter



Bone Aspirator Replacement Filter T841



★ **Bone Mill with Titanium Beaks T843**

Grinds large bone fragments into small particles that can be re-used in a bone graft



★ **Bone Scraper T844**

Can collect a large amount of bone material in the open cavity with very few scrapes



Measuring / Mixing Bowl 25 cc T848



Mixing Bowl for Bone Material T849



Mallet 180g T869

With one teflon side and one metal side



Ochsenbein 1 Chisel T775



Ochsenbein 2 Chisel T776



Osteotome with Stop, Concave, Offset

Offset for anterior and posterior with safety double stop screw to adjust the working depth
Depth markings: 6-11-15 mm

Available in 5 Sizes

- | | |
|--------------------|---------------------|
| T864 2 mm | T867 3.25 mm |
| T865 2.5 mm | T868 4 mm |
| T866 3 mm | |

BONE GRAFTING

Shown at 50% size



★ Bone Carrier - 3.5 mm T845



Bone Carrier - 4.5 mm T846



Bone Carrier - 6.0 mm T847



Bone Carrier Plugger 2 mm with Depth Marking T856

Bone material spoon and 2 mm diameter plugger with depth markings 2-4-6-8-10 mm



★ Bone Carrier Plugger 3 mm with Safety Stop T857

Bone material spoon and 3 mm diameter plugger with safety stop



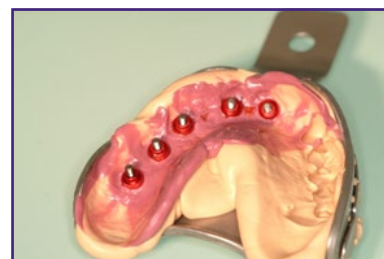
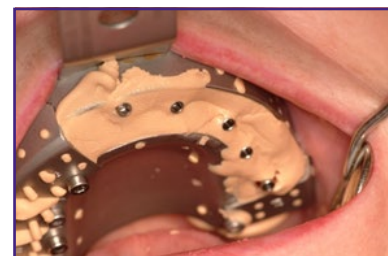
Bone Carrier Plugger 4 mm with Safety Stop T858

Bone material spoon and 4 mm diameter plugger with safety stop

IMPLANT IMPRESSION TRAY



★ WindowTray™
Implant Impression Tray
Includes four screws and one key



Available in 6 Sizes

T872 Lower Small

T875 Upper Small

T873 Lower Medium

T876 Upper Medium

T874 Lower Large

T877 Upper Large

- ◆ Made of surgical grade stainless steel
- ◆ Nine removable segments allow access to all sectors of the dental arches
- ◆ Implant posts remain in impression

- ◆ Cast a perfect working model in a single appointment
- ◆ Re-usable
- ◆ Can be sterilized

- ◆ Available for upper and lower
- ◆ Available in multiple size
- ◆ Doesn't require adhesives
- ◆ No need to manufacture your own tray

EXTRACTING FORCEPS

Shown at 50% size



★ **150 Extra Grip T790**

Upper Universal

Serrated beaks provide a more secure grip with reduced hand fatigue



★ **150S Extra Grip T791**

Lighter, ergonomic characteristics allow for greater control and visibility
Ability to hide the instrument in your hand for pediatric applications



★ **151 Extra Grip T792**

Lower Universal

Serrated beaks provide a more secure grip with reduced hand fatigue



★ **151S Extra Grip T793**

Lighter, ergonomic characteristics allow for greater control and visibility
Ability to hide the instrument in your hand for pediatric applications



★ **88L T795**

Upper Molars Left



★ **88R T796**

Upper Molars Right



★ **23 T794**

Lower Molars



★ **Root Forceps T797**

A slim, carbide-coated beak with deep fishhook serrations for removing root fragments or debris. Ergonomic, S-shaped forcep for easy access throughout the oral cavity.

POINTED FORCEPS



★ **Stieglitz 30° Splinter Forcep T732**

For removing root tips as well as holding pins and gutta percha
Features a locking mechanism for a more secure grip

HEMOSTAT



★ **Halsted-Mosquito Curved 12 cm T716**

For clamping blood vessels or IVs, removing root tips, or grasping other small objects



Luxating Instrument-2 mm T120



★ Luxating Instrument-3 mm T121



Luxating Instrument-4 mm T122



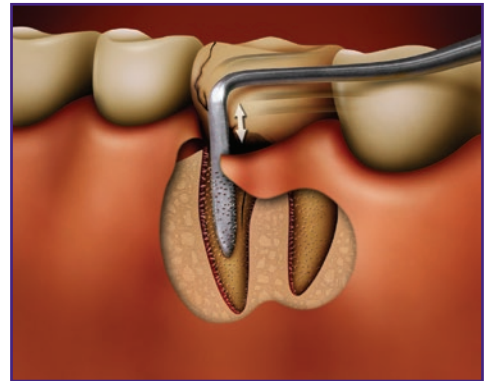
Luxating Instrument-5 mm T123

Fine cutting edge severs the periodontal ligament during tooth extraction
Not to be used as elevators

PERIOTOMES

A Micro-Serrated Instrument to Assist in Extractions

- ◆ Easier for the clinician
- ◆ Less traumatic for the Patient
- ◆ Patient heals faster
- ◆ Saw through the PDL
- ◆ Maintain socket with clean cut
- ◆ No need for elevation



Anterior Periostome R256



Posterior Periostome R258

Not to be used as elevators

AN ERGONOMICALLY ADVANCED ROOT ELEVATOR

For a firm, comfortable grip when you need it the most.



Root Elevator Apical-Flohr 302 T106



★ Seldin 301 T102



Seldin 34 T103



★ Seldin 34S T104



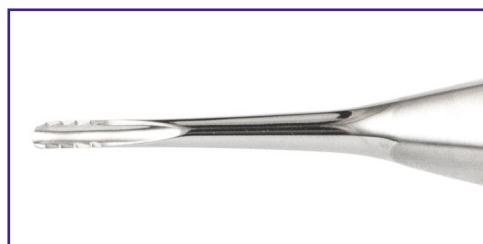
Apical Flohr 303 T107



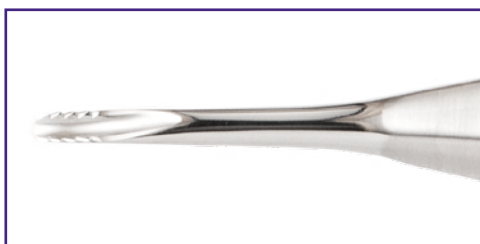
★ Cryer 39 T108



★ Cryer 40 T109



Lindo-Levien 3 T113



Lindo-Levien 4 T114

ROOT ELEVATORS

Heidbrink Root Tip Pick

Handles are small and lightweight to provide the tactile sensitivity needed in extraction of root pieces.



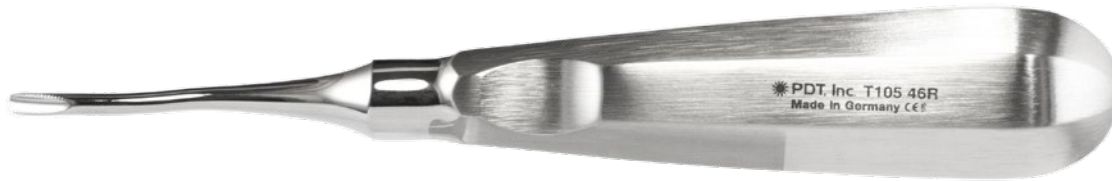
★ Root Tip Pick Heidbrink L Curved T110



★ Root Tip Pick Heidbrink R Curved T111



Root Tip Pick Heidbrink Straight T112



★ 46-R Serrated Root Elevator T105

For upper roots or molars
Tip features a bayonet curve and fine serration

BONE RONGEURS

Shown at 75% size



Friedman T730



★ Micro-Friedman T731
S-Shaped, Universal for upper and lower



Side view of T731

For cutting and re-shaping bone fragments or tissue

Shown at 75% size



★ **Crown Removing Pliers T780**
Comes with one pair of tips



10g Adhesive Powder T783

Crown Removing Pliers

To remove upper and lower crowns and bridges. The tips provide the perfect grip without damaging metal, resin, or ceramic surfaces. The adhesive powder can be added to increase the grip.

Also Available:

Crown Removing Pliers Replacement Tips T782
One pair of tips

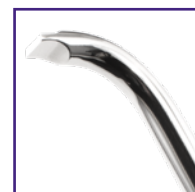
★ **Crown Removing Pliers Kit T781**
Crown Removing Pliers T780
5 pairs of Replacement Tips T782
10g Adhesive Powder T783



Vertical Crown Remover T830



Horizontal Crown Remover T831



RETRACTORS



Caewood Minnesota Retractor T100

To hold cheeks, lips, tongue, and mucoperiosteal flaps during oral surgery



Vestibulum Retractor T101

To hold cheeks and lips during oral surgery

TUNGSTEN CARBIDE NEEDLE HOLDERS

Shown at 50% size



Castroviejo, Straight
17.5 cm T088



★ **Castroviejo, Straight**
14 cm T710



★ **Crile Wood 15 cm** T714



Mathieu 14 cm T715

Long-lasting, tungsten carbide tipped needle holders provide a more secure, ergonomic grip and enhanced suturing control. The locking mechanism ensures your suturing needle does not slip or rotate in your grasp.

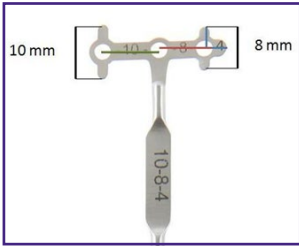
Shown at 75% size



Drill Guide T851

★ **Drill Guide 4 mm / 8 mm / 10 mm T851**
Has wings to make the pilot drill guidance easier and simplify the drilling procedure

Parallel Guide T854



4 mm to natural teeth
8 mm to premolars and front teeth
10 mm to molar teeth



Parallel Guide T854

Used for aligning two or four interforaminal implants in the edentulous mandible to the median plane.

A hole is drilled in the middle of the mandible using a pilot drill, which is easily aligned to the median plane. The distance to the middle can be accurately transferred to the opposite side by swivelling the fitted parallel guide.



Castroviejo Measuring Caliper, 9 cm, Angled T852

Versatile caliper useful in implant or general dentistry



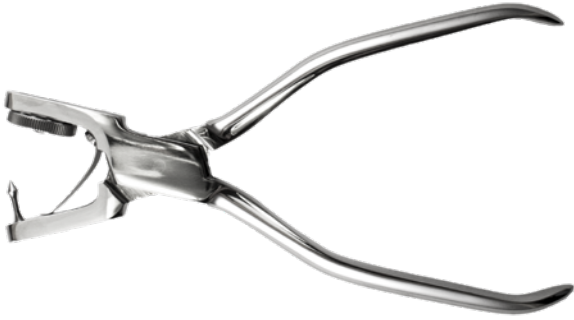
Width and Depth Caliper T853

For inside and outside measuring
Can measure the distance between teeth or the width of a tooth



Ridge Mapping Caliper T855

Pointed tips penetrate through soft tissue and measure the original thickness of the ridge



Rubberdam Punch Forceps Ainsworth T784



Rubberdam Clamp Forceps Ivory T785



Rubberdam Frame T786

ACCESSORIES



Basket for Small Parts T863
For the storage and sterilization of small parts



Universal Polisher Sponge T031
Eliminates water spots, scratches, and surface rust
Leaves a matte finish

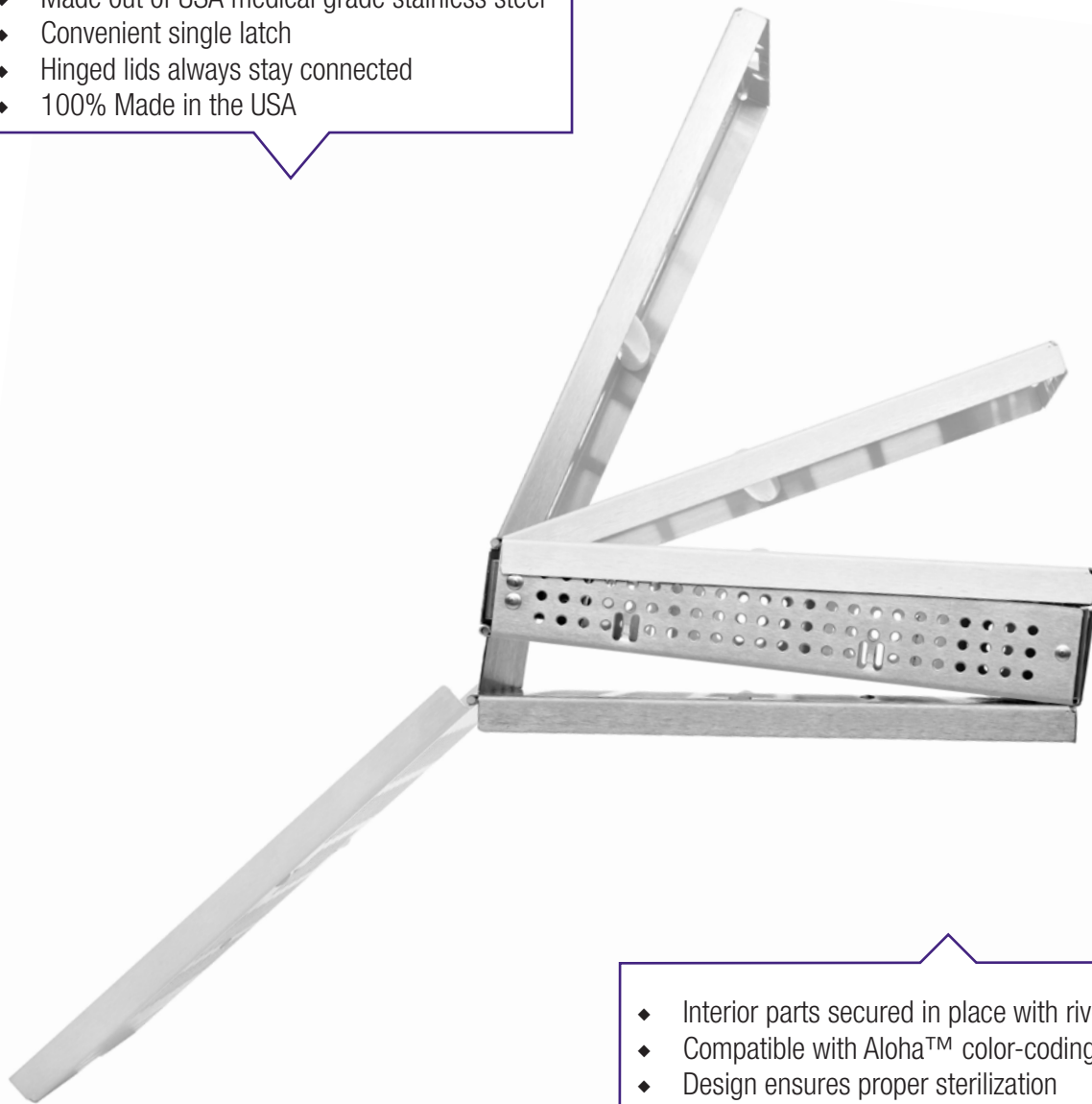


12 ml Synthetic Oil Pen T030
To avoid fretting corrosion
Apply a drop of lubricant after cleaning and before
sterilization on all joints, threads, and sliding surfaces

The most effective system for instrument infection control and sterilization.

Single-piece constructed FlipTop™ Cassettes are made with the highest quality, passivated, surgical grade stainless steel and unique teflon double hinge that flips up, over, and under for a much smaller footprint.

- ◆ Made out of USA medical grade stainless steel
- ◆ Convenient single latch
- ◆ Hinged lids always stay connected
- ◆ 100% Made in the USA



- ◆ Interior parts secured in place with rivets
- ◆ Compatible with Aloha™ color-coding tubes
- ◆ Design ensures proper sterilization
- ◆ Sizes available to meet all your needs

Save time, increase efficiency, and prolong the life of all your instruments while maintaining the highest sterilization standards.

Popular Cassettes



T005A-F



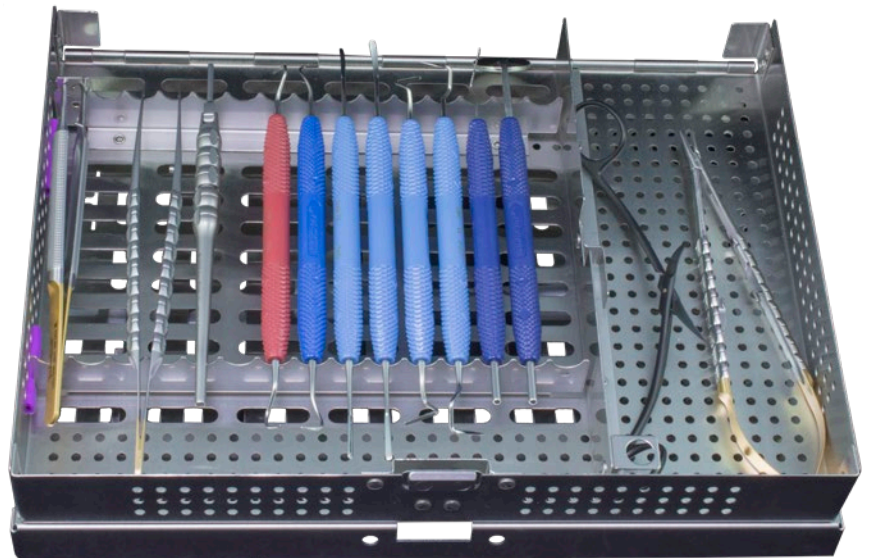
T007B-F



T009C-F



T009D-F



T015E-F

*PDT cassettes are available in several configurations that will hold **5 to 22** instruments with fixed (F), Liftout (L), Double Racks (D), or Utility - open without racks (U)*

Cassettes may feature:

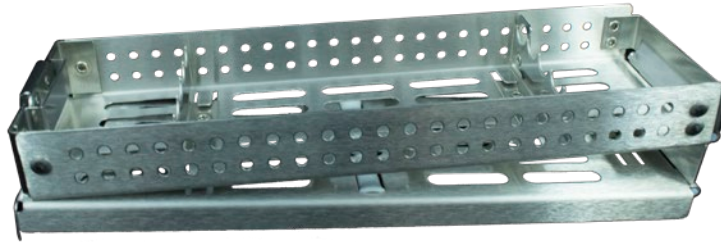
Air/Water Clip; Cotton Plier Clip; Needle Recapper; Stone Clip; and Scissors Clip

A Series

Ideal for small setups

8 1/16 in. X 2 9/16 in. X 15/16 in.

(except for T005 Exam)



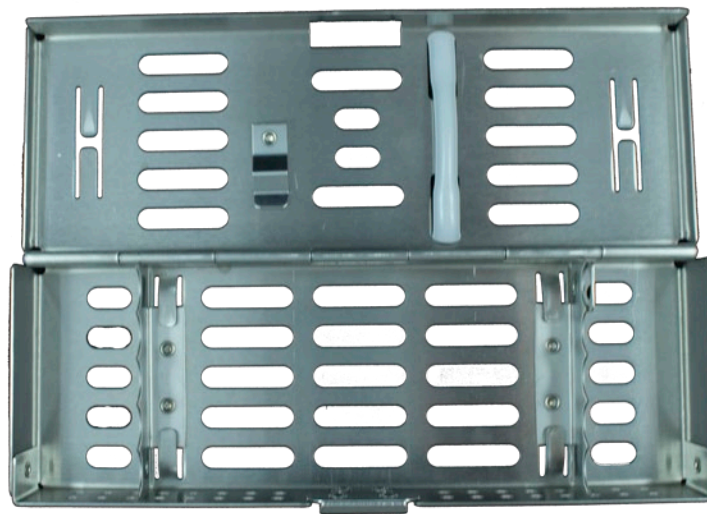
T005A-F

*Fixed Rack 5, holds up to 5 instruments
Air/Water Clip and Cotton Plier Clip*



T005A-U

*Utility holds handpieces, ultrasonic inserts, and other large instruments
The bottom is open with silicone retainer strips
Air/Water Clip*



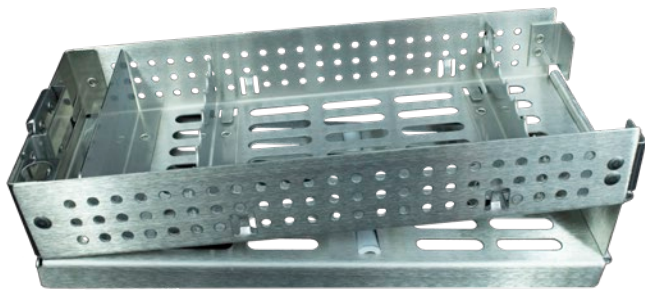
T005 Exam

*Fixed Rack 5 holds up to 5 instruments
This cassette has a traditional lid
7 1/16 in. x 2 5/8 in. x 7/8 in.
Air/Water Clip and Cotton Plier Clip*

B Series

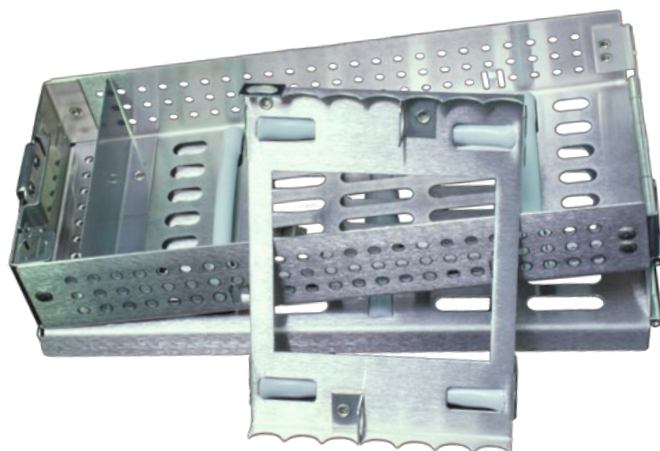
Holds 7-15 instruments

8 1/8 in. X 3 9/16 in. X 1 5/16 in.



T007B-F

Fixed Rack 7, holds up to 7 instruments
Includes 7/8 in. x 3 3/8 in. utility area
Air/Water Clip, Cotton Plier Clip, and Needle Recapper



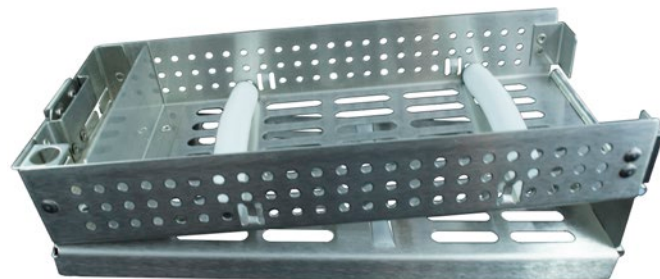
T007B-L

Holds up to 15 instruments
LiftOut Rack 7 on top & silicone retainer strips on bottom
Includes 7/8 in. x 3 3/8 in. utility area
Air/Water Clip, Cotton Plier Clip, and Needle Recapper



T007B-D

Holds up to 14 instruments.
LiftOut Rack 7 on top & Fixed Rack 7 on bottom
Includes 7/8 in. x 3 3/8 in. utility area
Air/Water Clip, Cotton Plier Clip, and Needle Recapper

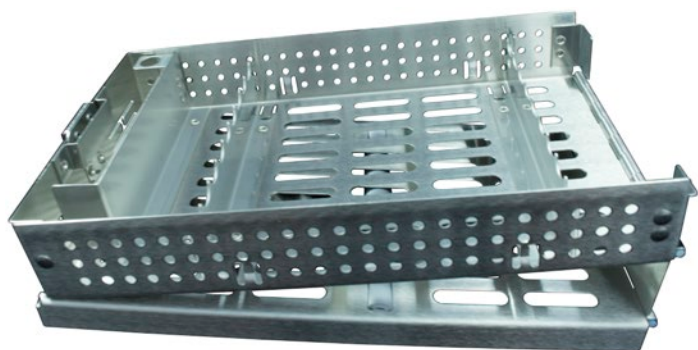


T007B-U

Utility holds handpieces, ultrasonic inserts, forceps, pliers, etc.
The bottom is open with silicone retainer strips
Includes 7/8 in. x 3 3/8 in. utility area
Air/Water Clip and Needle Recapper

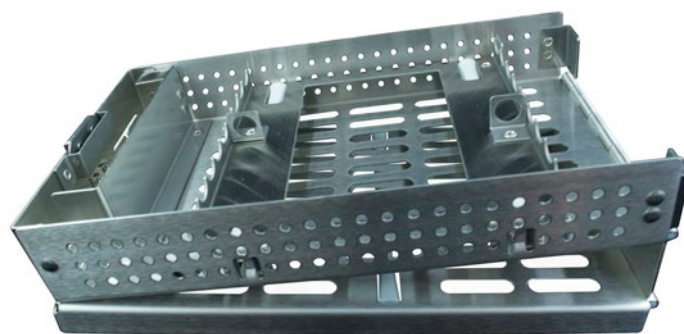
C Series

Holds 9-19 instruments
 8 1/8 in. X 4 13/16 in. X 1 5/16 in.



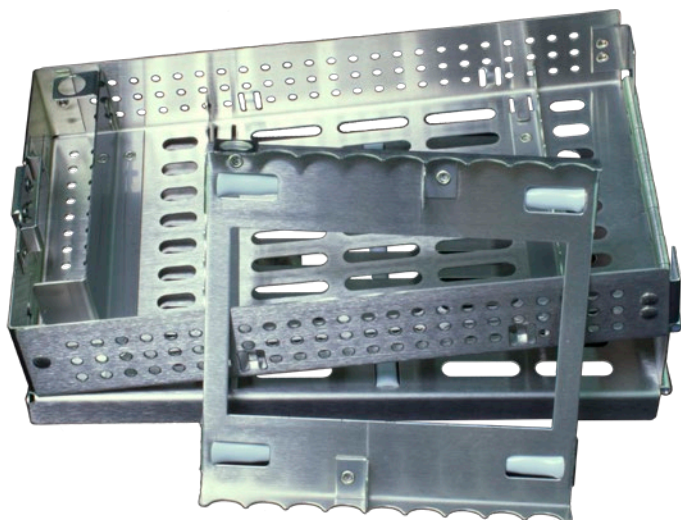
T009C-F

*Fixed Rack 9, holds up to 9 instruments
 Includes 1 position for an 8 in. instrument
 Includes 7/8 in. X 3 15/16 in. utility area
 Air/Water Clip, Cotton Plier Clip, and Needle Recapper*



T009C-L

*Holds up to 19 instruments
 Will accommodate 2 8 in. instruments
 LiftOut Rack 9 on top & silicone retainer strips on bottom
 Includes 7/8 in. X 3 15/16 in. utility area
 Air/Water Clip, Cotton Plier Clip, and Needle Recapper*



T009C-D

*Holds up to 18 instruments
 Will accommodate 2 8 in. instruments
 LiftOut Rack 9 on top & Fixed Rack 9 on bottom
 Includes 7/8 in. X 3 15/16 in. utility area
 Air/Water Clip, Cotton Plier Clip, and Needle Recapper*



T009C-U

*Will accommodate 1 8 in. instrument
 The bottom is open with silicone retainer strips
 Includes 7/8 in. X 3 15/16 in. utility area
 Air/Water Clip and Needle Recapper*

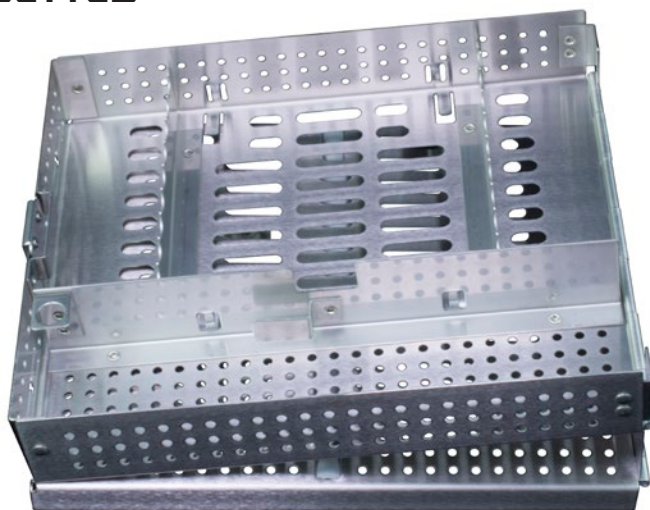
D Series

Holds 9-19 instruments

8 1/8 in. X 7 in. X 1 3/8 in.

T009D-F

Fixed Rack 9, holds up to 9 instruments
 8 in. instruments will fit in all positions
 Includes 2 3/8 in. X 8 in. utility area
 Air/Water Clip, Cotton Plier Clip, Needle Recapper, and Stone Clip



T009D-L

Holds up to 19 instruments
 LiftOut Rack 9 on top & silicone retainer strips on bottom
 Includes 2 3/16 in. X 8 in. utility area
 Air/Water Clip, Cotton Plier Clip, Needle Recapper, and Stone Clip



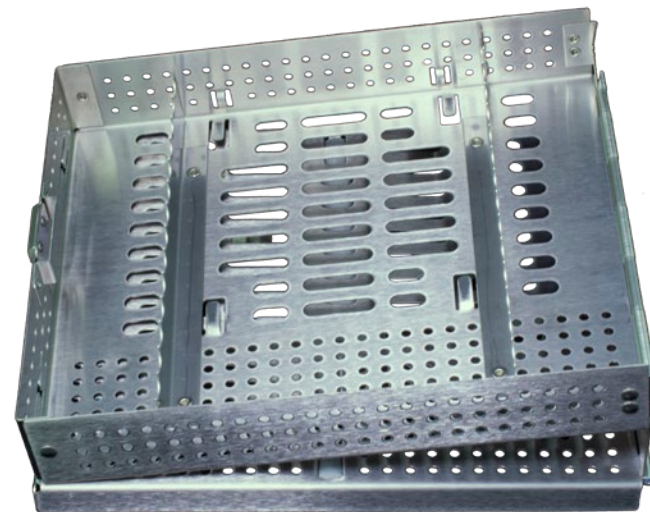
T009D-D

Holds up to 19 instruments
 LiftOut Rack 9 on top & Fixed Rack 9 on bottom
 Includes 2 3/16 in. X 8 in. utility area
 Air/Water Clip, Cotton Plier Clip, Needle Recapper, and Stone Clip



T009D-U

Utility is designed for large instruments
 The bottom is open with silicone retainer strips
 Includes 2 3/16 in. X 8 in. utility area
 Air/Water Clip, Needle Recapper, and Stone Clip



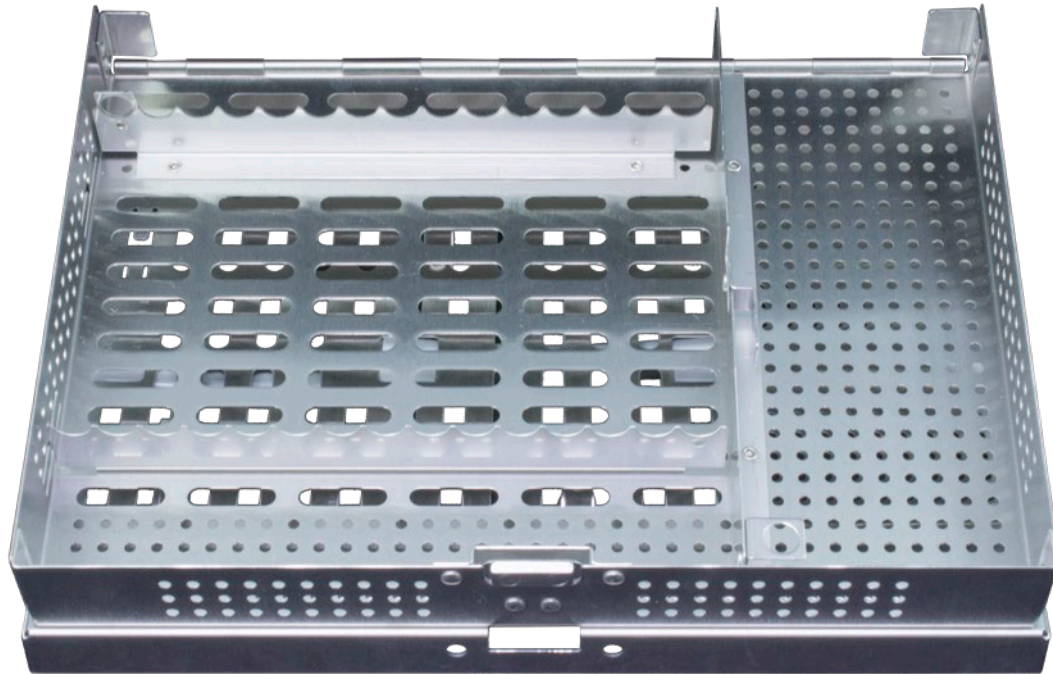
T009D-F15

Fixed Rack 15 holds 15 instruments
 Air/Water Clip and Cotton Plier Clip

E Series

Holds 15+ instruments

11 1/16 in. X 8 1/16 in. X 1 5/16 in.



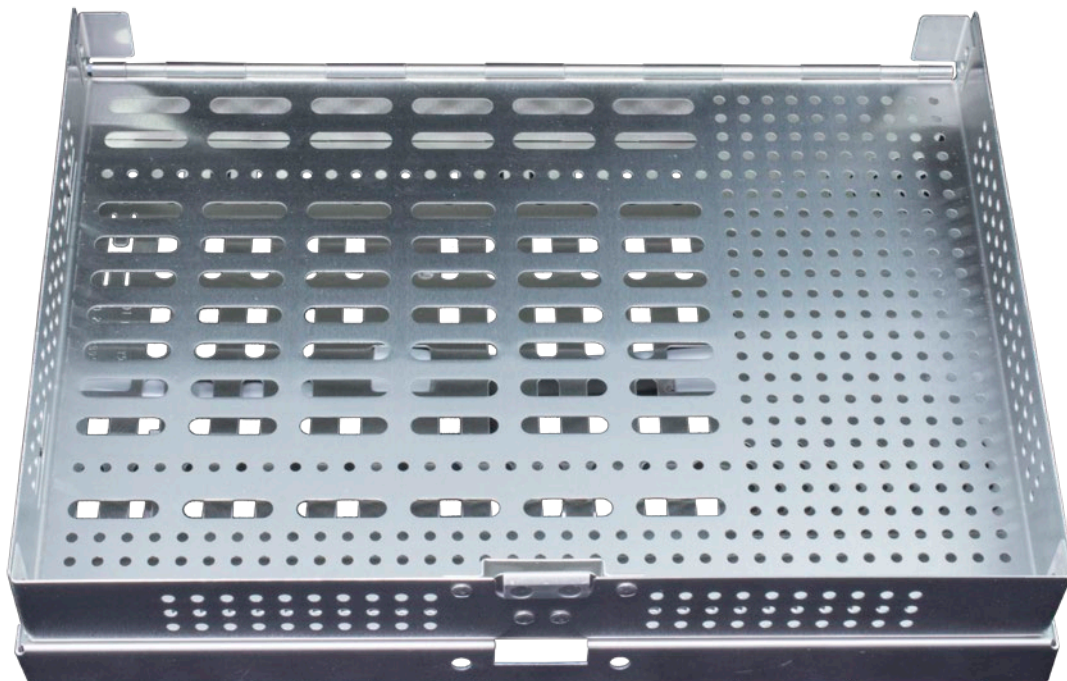
T015E-F

Fixed Rack 15 holds up to 15 instruments

Will hold 8 in. instruments

Includes 2 7/8 in. X 7 15/16 in. utility area

Air/Water Clip, Cotton Plier Clip, Needle Recapper, Stone Clip, and Scissors Clip



T015E-U

Our largest utility cassette

Air/Water Clip and Scissors Clip

Cassette Details

Item	Description	Outer Dimensions			Utility Area	Racks	Rack Capacity	Total Capacity	Accessories
		L"	W"	H"					
T005	PDT-5 Exam with fixed rack	7 1/16	2 5/8	7/8	-	1	5	5	AW, CP
T005A-F ★	A' -Fixed Rack 5	8 1/16	2 5/8	15/16	-	1	5	5	AW, CP
T005A-U	A' -Utility/Handpiece	8 1/16	2 9/16	15/16	-	0	-	-	AW
T007B-F ★	B' -Fixed Rack 7	8 1/8	3 9/16	1 5/16	7/8 x 3 3/8	1	7	7	AW, CP, NR
T007B-L	B' -LiftOut Rack 7	8 1/8	3 9/16	1 5/16	7/8 x 3 3/8	1	7	15	AW, CP, NR
T007B-D	B' -Double Rack 14	8 1/8	3 9/16	1 5/16	7/8 x 3 3/8	2	14	14	AW,CP,NR
T007B-U	B' -Utility ●	8 1/8	3 9/16	1 5/16	-	0	-	-	AW,NR
T009C-F ★	C' -Fixed Rack 9 ▲	8 1/8	4 13/16	1 5/16	7/8 x 3 15/16	1	9	9	AW, CP, NR
T009C-L	C' -LiftOut Rack 9 ▲	8 1/8	4 13/16	1 5/16	7/8 x 3 15/16	1	9	19	AW,CP,NR
T009C-D	C' -Double Rack 18 ▲	8 1/8	4 13/16	1 5/16	7/8 x 3 15/16	2	18	18	AW,CP,NR
T009C-U	C' -Utility ●	8 1/8	4 13/16	1 5/16	-	0	-	-	AW,NR
T009D-F ★	D' -Fixed Rack 9 ■	8 1/8	7	1 3/8	2 3/16 x 8	1	9	9	AW, CP, NR, STC
T009D-L	D' -LiftOut Rack 9 ■	8 1/8	7	1 3/8	2 3/16 x 8	1	9	19	AW, CP, NR, STC
T009D-D	D' -Double Rack 18 ■	8 1/8	7	1 3/8	2 3/16 x 8	2	18	18	AW, CP, NR, STC
T009D-F15	D' -Fixed Rack 15 ■	8 1/8	7	1 3/8	-	1	15	15	AW, CP
T009D-U	D' -Utility ●	8 1/8	7	1 3/8	2 3/16 x 8	0	-	-	AW, NR, STC
T015E-F ★	E' -Fixed Rack 15 ■	11 1/16	8 1/16	1 5/16	2 7/8 x 7 15/16	1	15	15	AW, CP, NR, SC, STC
T015E-U	E' Utility ●	11 1/16	8 1/16	1 5/16	-	0	-	-	AW, SC
	★ Most popular cassettes								
	● These cassettes are customizable and color-coding is available								
	■ Every position will accommodate an 8" instrument								
	▲ One position for an 8" instrument								

ALOHA™ COLOR-CODING

Item #	Dimensions		Quantity		
Aloha™ Cassette Color-Code Tubes T020- (Plus item code)	1.125" L 0.140" D		6		
Aloha™ Instrument Color-Code Rings T022- (Plus item code)	0.125" L 0.140" D		50		
Item	Color	Item	Color	Item	Color
BLK	Orca Black	GRY	Dolphin Gray	PRP	Passionate Purple
BRN	Coffee Brown	LBL	Sky Blue	RED	Coral Red
DBL	Nautical Blue	ORN	Sunset Orange	WHT	Coconut White
GRN	Tropical Green	PNK	Orchid Pink	YLW	Sunshine Yellow



WARRANTY

- ◆ PDT offers a 60 day guarantee on all instruments. If you purchase an instrument that does not meet your expectations, or has a manufacturer defect, return it to your dealer with a copy of your invoice and it will be exchanged or you will be issued a full refund. PDT may help facilitate the exchange or refund of instruments within the 60 day warranty. Forceps are provided with an unlimited warranty against breakage.
- ◆ PDT also provides a limited lifetime warranty against defects in materials and workmanship, providing limitations listed below are not present. Product "lifetime" means the ordinary, expected life, which varies by type of product. After 60 days from the date of the invoice, PDT will, at its discretion, assess instruments with which you have an issue and determine whether to repair or replace the instrument based on that assessment. An invoice must be returned with the instruments in order for PDT to evaluate instruments for replacement.
- ◆ All PDT products must be cleaned and sterilized according to guidelines published at www.pdtdental.com/product-use-and-maintenance.
- ◆ PDT evaluates all instruments returned by customers who feel the instrument did not perform as expected beyond the 60 day period. Limitations on replacement will include the following circumstances:
 - When the working blade has been reduced in size by 30% or more, in length, width or depth. The reduction in blade size and shape is a normal part of use and sharpening in the lifetime of an instrument.
 - When instruments have been improperly maintained, chemically contaminated, or damaged by excessive heat or pressure.
 - When instruments have been exposed to cleaning solutions containing phenols or other chemicals that are not conducive to our handles.
 - When instruments have been modified or retipped.
 - When instruments have been improperly used.
 - When an instrument is over 5 years old.
 - Complimentary instruments are not subject to warranty replacement.
- ◆ PDT disclaims liability, under any applicable warranty or otherwise, for damage arising from: (1) the use of commercial/residential grade washers; (2) the use of dental automated washer-disinfectors where the manufacturer's processing guidelines are not followed; (3) the use of cleaning solutions, chemicals and/or procedures that are contrary to PDT's recommendations; and/or (4) improper setup and/or installation of any product.
- ◆ The warranty for the Gleason Guide is five (5) years. For the warranty to be effective on the guides, you must register your guide within 60 days of purchase. You can do this online by going to pdtdental.com. Improper handling or excessive pressure placed on the guide with the instrument will cause excessive wear on the guide and will void the warranty.
- ◆ The warranty on the Diamond Head Ceramic Stone™ and the Transformation Sharpening Stone™ is five (5) years. Improper handling, dropping or handling the stones roughly can cause breakage or chipping of the stones. Too much pressure placed on the stone with the instrument when sharpening can cause excessive wear on the stone. Improper handling of the stones in this manner will void the warranty.
- ◆ The warranty for the FlipTop™ Cassette is five (5) years. At its option, PDT will repair or replace any cassette that is defective because of material failure (including corrosion) or workmanship of the cassette shell, internal or moving parts. Damage from misuse, abuse, negligence or alterations to the cassette void the warranty. If manufacturer's processing guidelines for commercial grade washers or dental automated washer disinfectors is not followed, the warranty is void. For the warranty to be effective, you must register your cassette within 60 days of purchase.
- ◆ It is our company policy and commitment to constantly upgrade and improve the quality of the products we produce. Therefore, we reserve the right to change the design of instruments or to discontinue products without notice.

To qualify for any guarantee or warranty, you must return the product to PDT with your dealers invoice. Once we receive the product with a copy of the original invoice, we will assess the condition of the product and advise you of our determination. Complimentary instruments are not subject to warranty replacement.

Go to pdtdental.com/register to register your PDT products

All PDT, Inc. products are shipped non sterile. Office practitioners are responsible for proper sterilizing prior to the first patient use. It is the responsibility of the office to ensure that employees are trained and qualified to perform the reprocessing and understand all local laws and requirements. It is the practitioner's responsibility to use validated processes for cleaning and sterilizing products. All PDT, Inc. products are designed for trained dental professionals and are to be used in accordance with industry standard dental practices for the instrument's intended purpose.

Follow the sequence as appropriate for your office:

Hand Cleaning:

- ◆ A soft bristle brush or cloth should be used to remove contamination. Never use abrasive scrubbing pads, wire bristle brushes or steel wool.
- ◆ Use pH neutral cleaners – follow all manufacturer instructions.
- ◆ All cleaning solutions must be thoroughly rinsed for a minimum of 20 seconds under clean, running water – preferably filtered or distilled.
- ◆ Inspect all instruments to ensure that all contaminants have been removed, paying critical attention to hinges, joints, cavities, bore holes and serrations. Failure to remove all contamination may result in a failure in sterilization.

Ultrasonic Cleaning:

- ◆ Use pH neutral cleaners – follow all manufacturer instructions.
- ◆ Do not use household cleaners as they may cause pitting, corrosion, rust and other damage to instruments. There is also the risk of damaging the ultrasonic by using this type of cleaner.
- ◆ All cleaning solutions must be thoroughly rinsed for a minimum of 20 seconds under clean, running water – preferably filtered or distilled.
- ◆ Inspect all instruments to ensure that all contaminants have been removed, paying critical attention to hinges, joints, cavities, bore holes and serrations. Failure to remove all contamination may result in a failure in sterilization.

Automated Washer Unit:

- ◆ Use pH neutral cleaners – follow all manufacturer instructions.
- ◆ Do not use household cleaners as they may cause pitting, corrosion, rust and other damage to instruments.
- ◆ Ensure water flow is adequate for the method of instrument packaging used in the unit.
- ◆ Inspect all instruments to ensure that all contaminants have been removed, paying critical attention to hinges, joints, cavities, bore holes and serrations. Failure to remove all contamination may result in a failure in sterilization.

Prior to Final Sterilization:

- ◆ Inspect all instruments for proper operation and function.
- ◆ Oil hinges and joints using oils designated by local regulations. Test all hinges and joints (as needed) to ensure smooth operations.
- ◆ Ensure all hinged, jointed or clamped instruments are sterilized in the open or loose position.

Sterilizing Process:

- ◆ Only FDA-approved dry or steam heat sterilizers should be used.
- ◆ Monitor the sterilizer's mechanics (thermometer, timers, pressure levels, etc.) to ensure proper functioning.
- ◆ Follow the manufacturer's instructions for cycle time and temperature, loading and monitoring.
- ◆ Make sure packaging materials are compatible with the sterilizer being used.
- ◆ Items must be arranged to allow for free circulation of the sterilizing agent.
- ◆ Instrument packs must be allowed to dry completely in the sterilizing unit before handling to reduce contamination to the instruments. Instruments must remain in packages until use.
- ◆ Use filtered or distilled water. Follow the unit manufacturer's instructions for types and amounts of water.

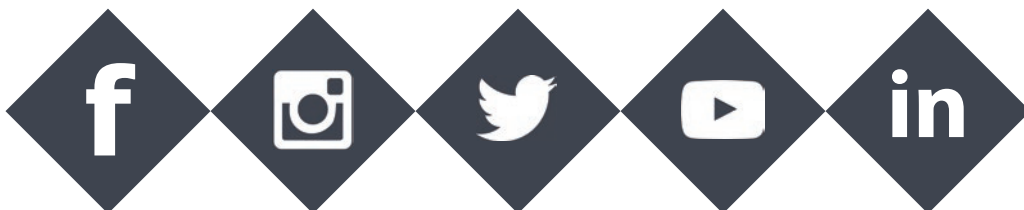
Refer to pdt dental.com/product-care for the complete reprocessing guide

Visit PDTdental.com for the latest PDT news



- ◆ New Product Announcements
- ◆ Quarterly Specials
- ◆ Upcoming Events
- ◆ CE Opportunities

PARADISE DENTAL TECHNOLOGIES



PDT, Inc. - Paradise Dental Technologies

8275 Highway 10 W ♦ Missoula, MT 59808

Phone: 800-240-9895 ♦ Fax: 406-626-4550

pdt dental.com