

Victory Court offers spacious living with all the features of home.

- Washer/Dryer in Every Home
- 9 FT Ceilings
- Stainless Steel Appliances
- Center Island (in select units)
- Walk-In Closets
- Controlled Entry - Key FOB System
- Tuck Under/Detached Garages
- Community Room
- Theater Room
- Fitness Center
- Elevator
- Smoke-Free/Pet-Free Community
- Security Deposit: \$500.00
Application Fee \$35.00/Per Adult
- Rent Includes: Heat, Water/Sewer, and Trash



Professionally Managed By:



14 North Seventh Avenue

St. Cloud, MN 56304

Office 320-656-4127

Fax 320-259-4098

www.maxcelmanagement.com

**Victory Court
Phase II
Opening April
2016**

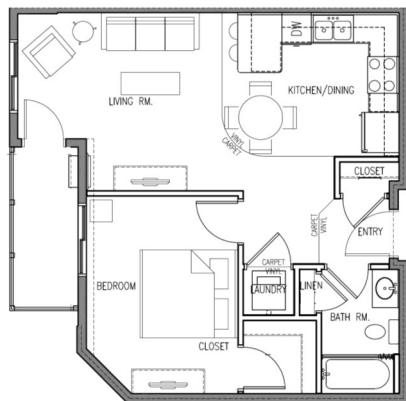


**555 Victory Ave S
Sartell, MN 56377**

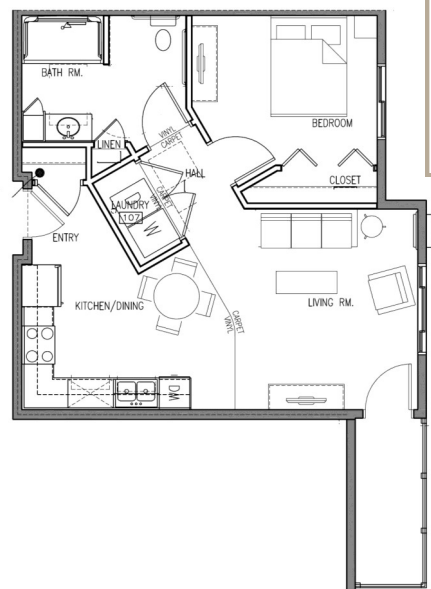
**Rental Information
320-761-6300**

Floor Plans & Pricing

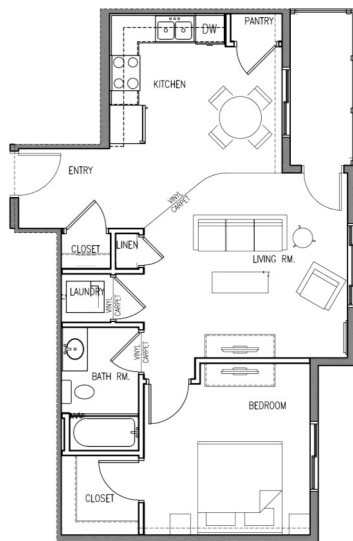
(All Prices Subject to Change)



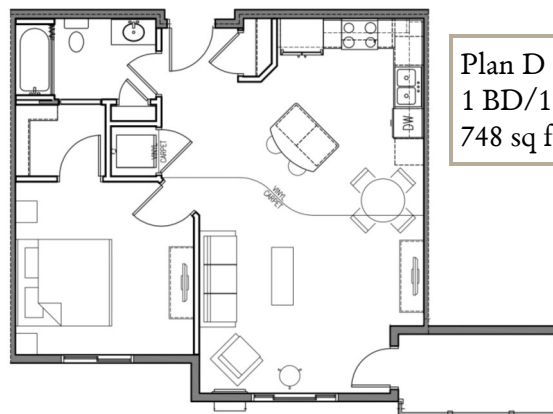
Plan A - \$725.00
1 BD/1 BA
638 sq ft



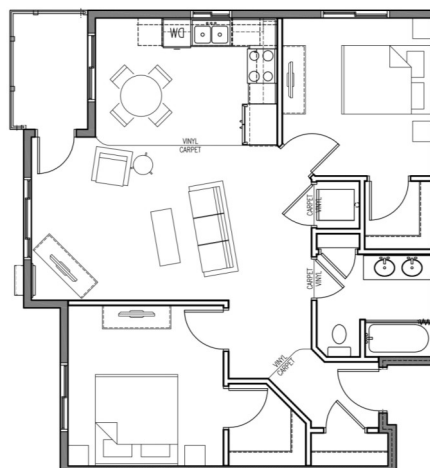
Plan B - \$725.00
1 BD/1 BA
695 sq ft
Handicap
Accessible



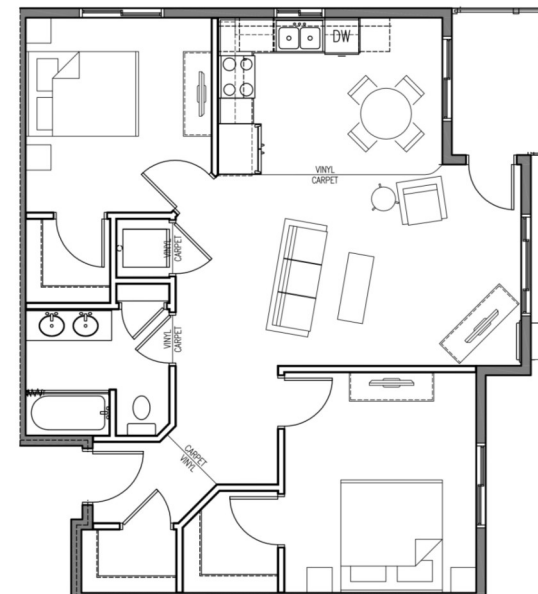
Plan C - \$800.00
1 BD/1 BA
745 sq ft



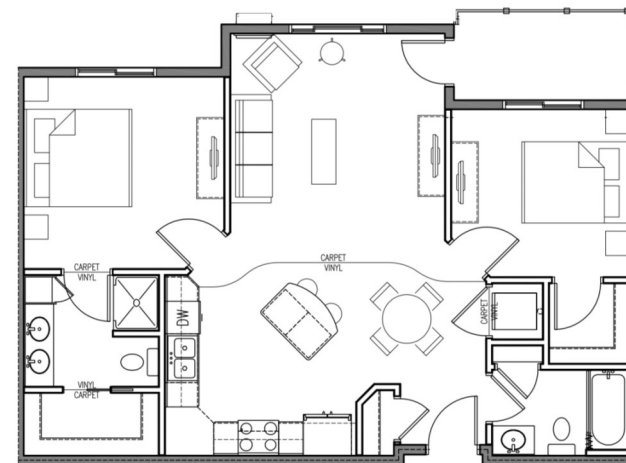
Plan D - \$800.00
1 BD/1 BA
748 sq ft



Plan E - \$900.00
2 BD/1 BA
942 sq ft



Plan F - \$900.00
2 BD/1 BA
973 sq ft



Plan G/H - \$925.00
2 BD/2 BA
953 sq ft