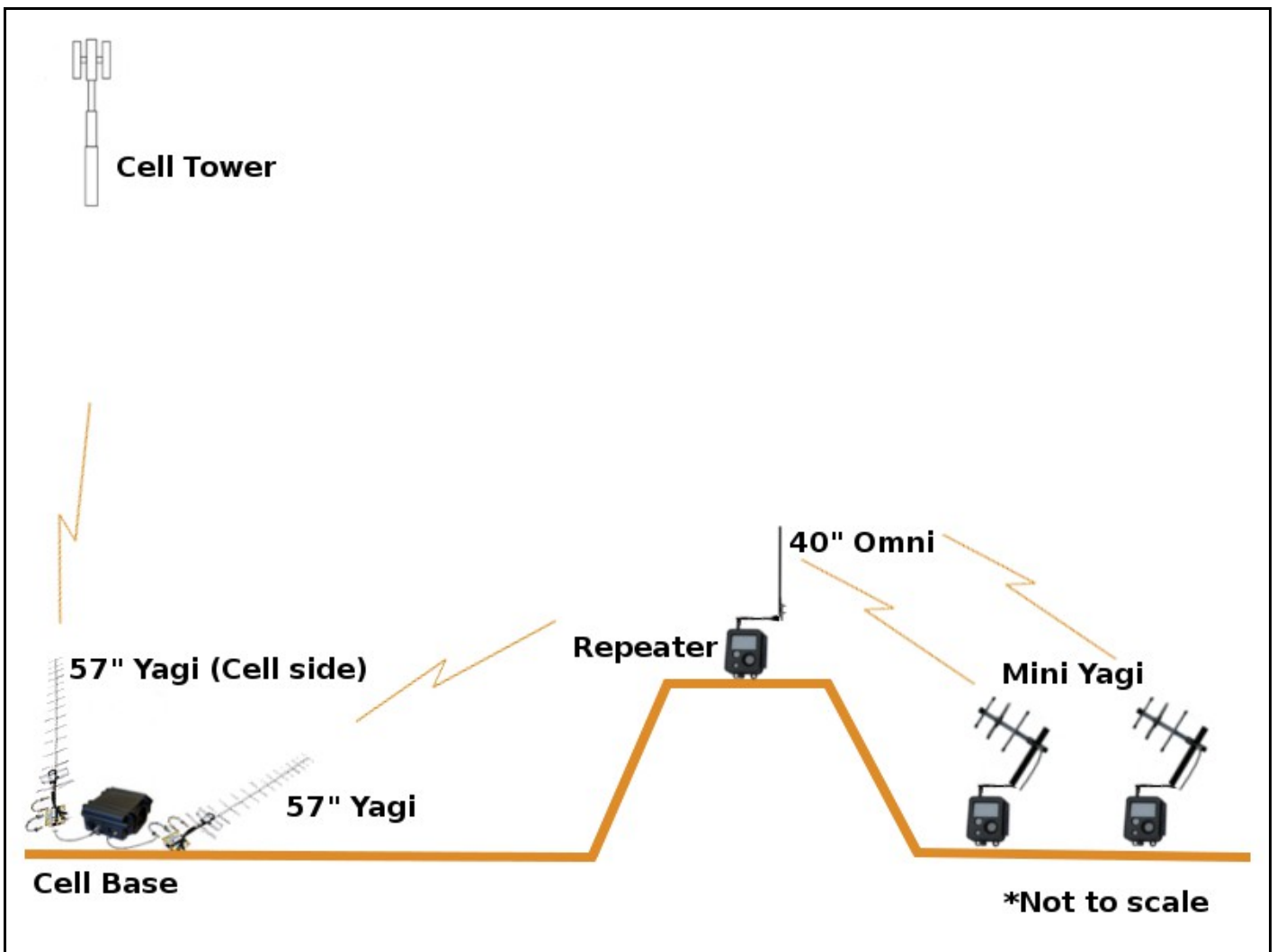


The following diagram shows an example setup that includes a repeating camera on top of a mountain. Cameras on one side of the mountain are repeating through the camera on top of the mountain to a Cell Base on the other side.

If the cell signal is too weak to get a network connection, a 57 inch Yagi type antenna pointed toward the cell tower *may* improve the signal enough for the Cell Base to get a connection.

If the transmission distances involved are long (i.e. many miles), it may take some trial and error to find the proper antenna placement. For more information on antennas and repeater setups, see *Application Note 01: Optional Antenna Setups for all Buckeye Cam Wireless Devices*.

[www.buckeyecam.com/site/support.html](http://www.buckeyecam.com/site/support.html)



For more information visit, [www.buckeyecam.com](http://www.buckeyecam.com) or call toll free at: 866-325-8172