

Rabbit Anti-LSP1 [EP164]: RM0120

Intended Use: For Research Use Only

Description: LSP1 (leukocyte-specific protein 1) is an intracellular F-actin binding protein. This protein may regulate neutrophil motility, adhesion to fibrinogen matrix proteins, and transendothelial migration. LSP1 is expressed in lymphocytes, macrophages, and neutrophils. It is a specific marker of human leukocytes. The LSP1 protein was detected in a wide range of leukemias and lymphomas, particularly of B-cell origin, and in tumor cells in classical Hodgkin's disease. In combination with PU.1, LSP1 may be useful in differentiating T-cell-rich B-cell lymphoma (LSP1-positive, PU.1-negative) from lymphocyte-predominant Hodgkin's disease (LSP1 negative, PU.1 expression variable).

Specifications

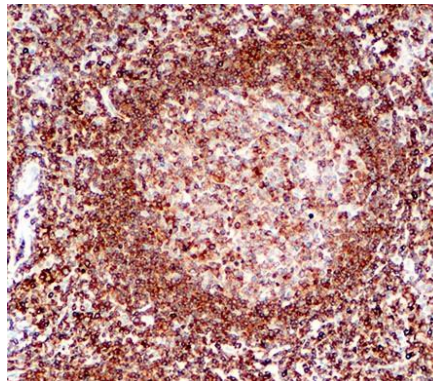
Clone: EP164
 Source: Rabbit
 Isotype: IgG
 Reactivity: Human
 Localization: Membrane, cytoplasm, nucleus
 Formulation: Purified antibody in 0.2% BSA and 15mM sodium azide (NaN₃)
 Storage: Store at 2°- 8°C. For longer periods of storage, store at -20°C. Avoid repeat freeze-thaw cycles
 Applications: IHC
 Package:

| Description | Catalog No. | Size |
|-------------------|-------------|------|
| LSP1 Concentrated | RM0120 | 1 ml |

IHC Procedure*

Positive Control Tissue: Tonsil, B cell lymphoma
 Concentrated Dilution: 50-200
 Pretreatment: Citrate pH6.0, 15 minutes using Pressure Cooker, or 30-60 minutes using water bath at 95°-99°C
 Incubation Time and Temp: 30-60 minutes @ RT
 Detection: Refer to the detection system manual

* Result should be confirmed by an established diagnostic procedure.



FFPE human tonsil stained with anti-LSP1 using DAB