

1976

**CORONET*
COMPOUND**

Economically
priced
Permanently
balanced
Light mass
weight
Superb
performance



CREST



Superb craftsmanship for the advanced archer.
No. RRS—AMO length 68 in.
Weights: 20, 25, 30, 35, 40 lbs.
Draw limit—unlimited
Brace height 9 in. \pm 1/2 in.
Available right or left hand
Stabilizer bushing

CRESCENT



An excellent first bow for the adult.
No. GBF—AMO length 66 in.
Weights: 20, 25, 30, 35, 40 lbs.
Draw limit—unlimited
Brace height 9 in. \pm 1/2 in.
Available right or left hand

CADET



"First choice" with camps and schools.
No. BFB—AMO length 62 in.
Weights: 20, 25, 30, 35, 40 lbs.
Draw limit—unlimited
Brace height 8 in. \pm 1/2 in.
Available right or left hand

TROPHY



Classic beauty with unsurpassed shooting stability.
No. KFT—AMO length 60 in.
Weights: 40, 45, 50, 55 lbs.
Draw limit—unlimited
Brace height 8 1/2 in. \pm 1/2 in.
Available right or left hand
Stabilizer bushing

THUNDERBOLT



"Short and powerful" for deep woods hunting.
No. RRH—AMO length 54 in.
Weights: 40, 45, 50, 55 lbs.
Draw limit—unlimited
Brace height 8 1/2 in. \pm 1/2 in.
Available right or left hand

TRACKER

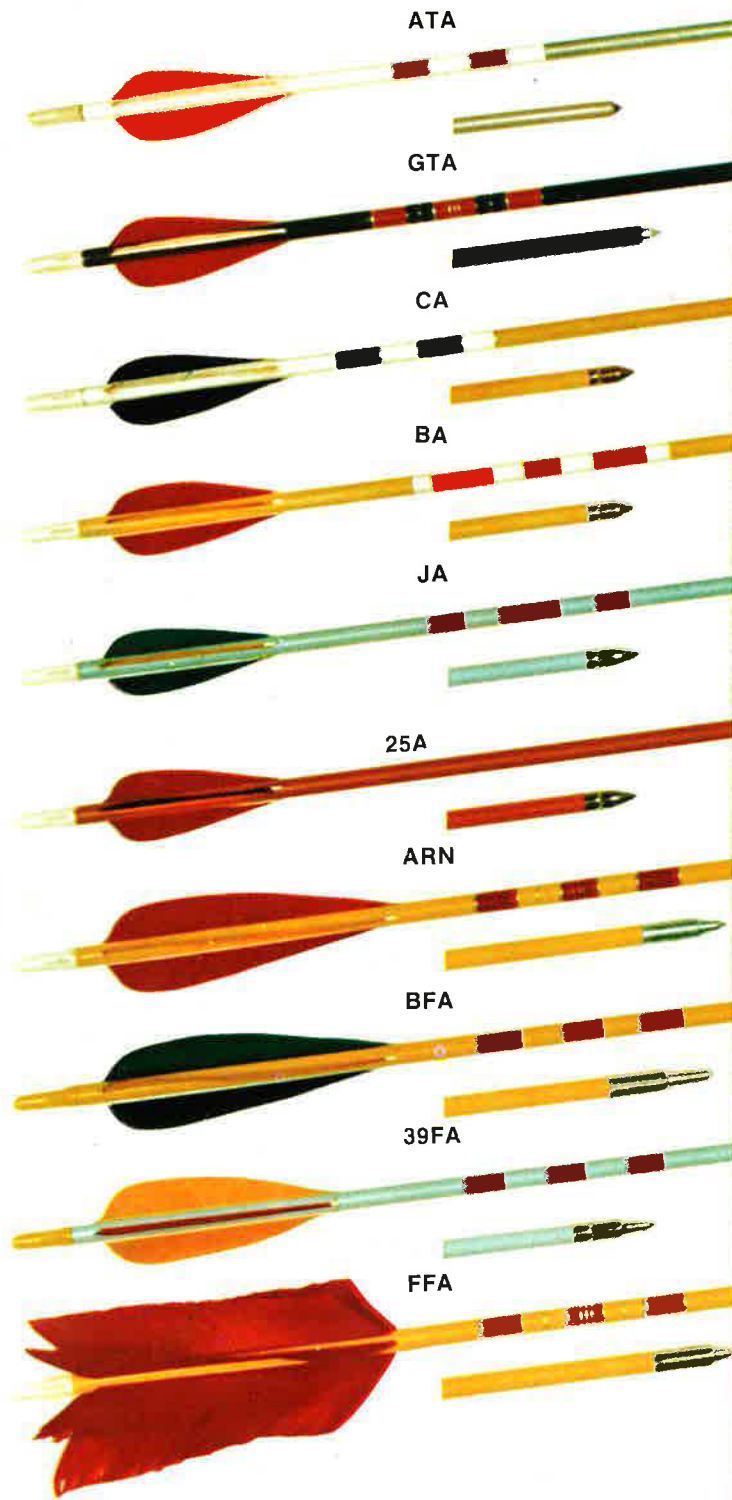


The perfect bow for the beginning bow hunter.
No. MPH—AMO length 58 in.
Weights: 40, 45, 50, 55 lbs.
Draw limit—unlimited
Brace height 8 1/2 in. \pm 1/2 in.
Available right or left hand

No. KBS Length—axel to axel—43 in. Weights: 50 to 60 lbs. Draw lengths: 28-29 in., 29-30 in., 30-31 in. Available right or left hand. String length—39 in. loop to loop. To order specify: Weight, Draw length, Right or left hand.

*Mfg. by D.A. under Allen Patent No. 3,486,495

ARROWS by YORK



YORK is the TOTAL line - with the CORRECT equipment for archers of all skills, from beginners to bowhunters, school programs to top tournaments.



TARGET ARROWS

MATCHED ALUMINUM tournament quality target arrow. Made from Easton/Swift aluminum tubing, matched to precise weight and spine tolerance. Colored white with multi-colored hand cresting. For bow weights 25 to 45 lbs. Available in 26, 28, 29 and 30 inch lengths. *State arrow length and bow weight when ordering.*

No. ATA dozen

MATCHED FIBERGLASS target arrow. A high quality fiberglass arrow made from Gordon shafts, matched in weight and spine for precision shooting. Yellow shafts with multi-colored hand cresting. For bow weights 25 to 45 lbs. Available in 26, 28, 29, and 30 inch lengths. *State arrow length and bow weight when ordering.*

No. GTA dozen

MATCHED CEDAR target arrow. These deluxe arrows are made of choice Port Orford Cedar shafts and matched for accurate shooting. They are equipped with parallel target points, plastic nocks and parabolic shaped fletching. Colored white and crested in six standard color combinations. For bow weights 20 to 40 lbs. Available in 24, 26, 28, and 30 inch lengths. *State arrow length and bow weight when ordering.*

No. CA dozen

STANDARD CEDAR target arrow. These arrows are highly recommended for camps and schools. Finished in clear lacquer and brightly crested in six standard color combinations. Fitted with parallel points, plastic nocks and parabolic shaped feathers. Supplied in 24, 26, 28, and 30 inch lengths. Packed one length only per box. Recommended for bows 20 to 40 lbs.

No. BA dozen

No. BA-1 gross

No. BA-2 half-gross

PRACTICE TARGET ARROWS

BEGINNERS' PRACTICE arrow. Brightly colored Port Orford cedar shafts with contrasting crest. Bullet points and plastic nocks. Supplied in 26 and 28 inch lengths only. Not recommended for bows over 40 lbs.

No. JA dozen

No. JA-1 gross

No. JA-2 half-gross

ECONOMY TARGET arrow. Full colored Port Orford cedar shafts with bullet points, plastic nocks and 3 inch fletching. Supplied in 26 and 28 inch lengths only. Not recommended for bows over 40 lbs. Available in gross and half-gross display packs only.

No. 25A-1 gross

No. 25A-2 half-gross

Practice target arrows are packed all 26 inch or all 28 inch, or in standard packs of one-half each length. Please specify pack desired when ordering.

FIELD ARROWS

DELUXE CEDAR field arrow. Select Port Orford cedar shafts matched to close tolerance in weight and spine. Fletched with 5 inch helical feathers with 5" taper core field points. Full colored shaft with multi-colored crest. Supplied in 29 and 31 inch lengths only. For bow weights to 55 lbs. *State arrow length and bow weight when ordering.*

No. ARN dozen

STANDARD CEDAR field arrow. Full colored Port Orford cedar shafts with contrasting crest. Non-skid field points and 5 inch helical fletching. Supplied in 29 inch length only. For bow weights 40 to 50 lbs. only.

No. BFA dozen

No. BFA-B 4 dozen pack

PRACTICE CEDAR field arrow. A budget-priced Port Orford cedar field arrow. Full color shaft with contrasting crest, non-skid field points and 4 inch fletching. Not recommended for bows over 40 lbs. Available in half-gross display packs only.

No. 39FA-2 half-gross

FLU-FLU arrow. Port Orford cedar shaft with six feather fletching for proper braking action. Full color shaft with multi-color cresting and non-skid point. Supplied in 29 inch length only.

No. FFA 4 to a box

HUNTING ARROWS

MATCHED ALUMINUM hunting arrow. "Game getter" green anodized Easton aluminum shaft. Fitted with Adapta-Point inserts and screw-in broadhead adaptors only; no points. For points, see accessory page. Fletched with 5 inch helical feathers. Multi-colored cresting. Supplied in 29 and 31 inch lengths, for bow weights to 60 lbs. *State arrow length and bow weight when ordering.*

No. AHA dozen

No. AHA-FL dozen Full length with inserts and adaptors included but not installed.

MATCHED FIBERGLASS hunting arrow. Top performance Gordon glass shaft to meet all hunting conditions. Fitted with Adapta-Point inserts and screw-in broadhead adaptors only; no points. For points, see accessory page. Fletched with 5 inch helical feathers. Multi-color cresting. Supplied in 29 and 31 inch lengths, for bow weights 40 to 60 lbs. *State arrow length and bow weight when ordering.*

No. GHA dozen

No. GHA-FL dozen Full length with inserts and adaptors included but not installed.

DELUXE CEDAR hunting arrow. Select matched Port Orford cedar shafts. Fletched with 5 inch helical feathers and fitted with HP-4 points. Full color shafts with multi-color cresting. Supplied in 29 and 31 inch lengths only, for bow weights 40 to 60 lbs. *State arrow length and bow weight when ordering.*

No. HA dozen

STANDARD CEDAR hunting arrow. Choice Port Orford cedar shafts. Fletched with 5 inch helical feathers and fitted with 3-bladed HP-3 broadhead. Arrow is full colored with contrasting crest. Supplied in 29 and 31 inch lengths, for bow weights 40 to 60 lbs. *State arrow length and bow weight when ordering.*

No. HAS dozen

No. HAS-FL dozen Same as standard hunting arrow above but full length less point.

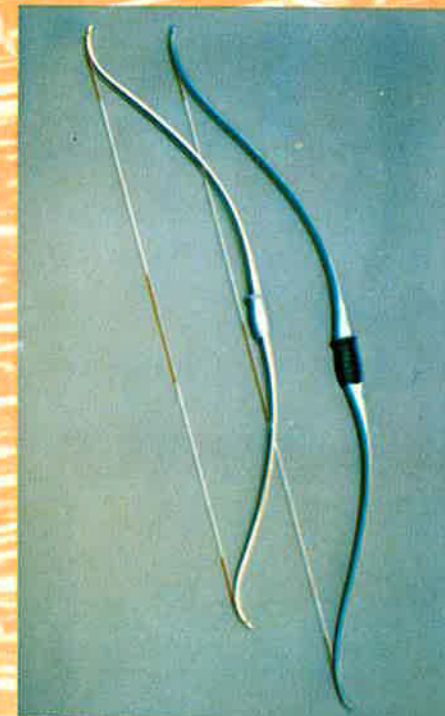
REVERSIBLE BARB FISH Arrow has solid fiberglass shaft. Special fishing point has reversible barb to allow easy extraction of arrow from fish. Waterproof rubber fletching and brilliant crest. Drilled hole provides for attachment of line. Length 30 in. only

No. GFA each (sold in multiples of 6 only)



UNBREAKABLE FIBERGLASS BOWS by YORK

YORK fiberglass bows are especially recommended for camps and schools. Weather conditions will not affect their performance, and they are *unconditionally guaranteed against limb breakage*. These fine bows are equipped with molded contoured grips that eliminate hand fatigue, and dual arrow rests so both right- and left-handed archers can use them.



RECURVED BOWS

Recurved 60 in. Bow

Dual arrow rest. Available in weights 20, 25, 30, 35, 40, 45 lbs. at 28 inch draw. Catalog No. RG-60

Recurved 54 in. Bow

Dual arrow rest. Approximately 25 lbs. at 26 inch draw. Recommended for boys and girls 14 years of age and under. Catalog No. RG-54

STRAIGHT LIMB BOWS

YORK straight limb bows are favored by camps and schools. Their flat limb style permits easy stringing and

unstringing, and they are less sensitive to shoot than recurve bows.

Straight 64 in. Bow

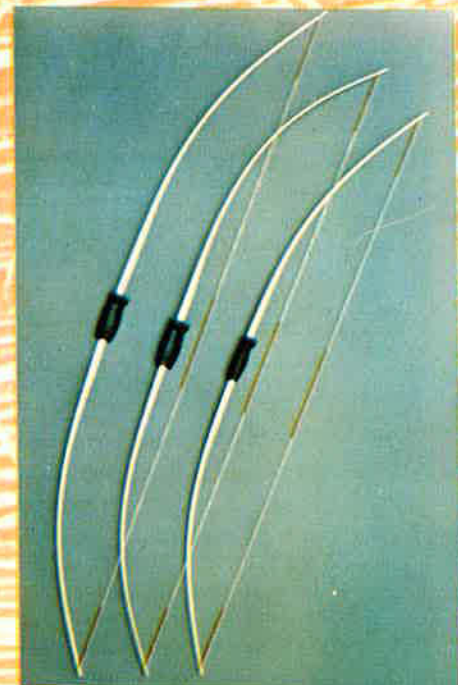
Dual arrow rest. Available in weights 20, 25, 30, 35, 40 lbs. at 28 inch draw. Catalog No. SG-64

Straight 60 in. Bow

Dual arrow rest. Available in weights 20, 25, 30, 35, 40 lbs. at 28 inch draw. Catalog No. SG-60

Straight 54 in. Bow

Dual arrow rest. Available in approximately 25 lb. weights at 26 inch draw. Recommended for boys and girls 14 years of age and under. Catalog No. SG-54



TOURNAMENT SIDE QUIVER has large zipper pocket, score card and pencil holder, and arrow divider thong. Double hang straps with snap fasteners for ease in attaching to belt.

No. TFQ-P each

DELUXE SIDE QUIVER Large size, quality made of heavy duty vinyl. Has clip for attaching to belt. Highly recommended for camps and schools.

No. LQ-20 each

ECONOMY SIDE QUIVER of serviceable vinyl for beginners. Budget-priced, yet rugged enough to withstand seasons of abuse. Wide loop for attaching to belt.

No. AQ-17 each

GROUND QUIVER for target shooting. Detachable aluminum head, steel support rod. Quiver has loop for arrows, rack for holding bow.

No. WQ each

ELASTIC BACK GLOVE with cowhide tips, adjustable strap. Extra large, large, medium and small. State size when ordering.

No. AG-26 each

ECONOMY ARCHERY GLOVE is first choice of camps and schools. Vinyl back, cowhide fingertips, adjustable strap. Extra large, large, medium and small. State size when ordering.

No. AG-24 each

PRO-STYLE TAB is diecut from cowhide, has smooth leather lining. Fits middle finger comfortably. Small, medium or large. State size when ordering.

No. AG-19 each

BEGINNER'S SHOOTING TAB is diecut from genuine cowhide. In small, medium, or large. State size when ordering.

No. AG-22 each

WESTERN STYLE TAB is same quality as AG-22 but in Western style. Small, medium or large. State size when ordering.

No. AG-17 each

DELUXE VENTILATED TARGET ARM GUARD affords maximum protection yet is ventilated for hot weather comfort. Three full length steel stays, two adjustable elastic straps for fastening.

No. AG-31 each

STANDARD TARGET ARM GUARD of heavyweight leather with center steel stay for protection. Two adjustable elastic straps for fastening.

No. AG-10 each

ECONOMY TARGET ARM GUARD is a wise choice for camps and schools. Made of heavy duty vinyl with a center stay for protection. Two adjustable elastic straps for fastening.

No. AG-20 each

BUDGET TARGET ARM GUARD of heavy duty vinyl. Single hook and strap for fastening.

No. AG-15 each

TRAINING ARM GUARD gives extra protection to beginners. Protects wrist and keeps sleeve away from bowstring. Tough vinyl, with adjustable elastic straps.

No. AG-50 each

HUNTING ARM GUARD of camouflaged vinyl is lined with imitation suede. Three elastic adjustable straps. Two steel stays for wrist protection.

No. HG-40 each



SHOOTING ACCESSORIES by YORK



FOUR BLADED MARK IV "silencer" broadhead. One of the finest 4 blade points made.
No. HP-4 Pkg. of 3

THREE BLADED MA-3 broadhead made with radial edge for better penetration and ease of sharpening.
No. HP-3 Pkg. of 3

ADAPTA-POINT MARK IV "silencer" broadhead for GHA and AHA Adapta-Point arrows. Removable blades.
No. AP-5 Pkg. of 3

ADAPTA-POINT FIELD point. 125 grain.
No. AP-9 Pkg. of 6

SPECIAL FISHING POINT has reversible barb for easy removal from fish. 5/16" diam. Parallel core.
No. DFP each

SILENCER of weather-resistant neoprene. Mount concentrically on bowstring and effectively quiet twang.
No. NBS pair

FISHING REEL is made of aluminum with flange mounting bracket. Easily taped to bow. Designed for snag-proof uncoiling of line. Reel comes complete with 60 feet of 72 lb. test line.
No. M-55 each

STALKER BOW QUIVER is molded of can't-scratch material with formed slots that easily slide over the limbs of the bow. Holds six arrows ready for action. No screws, clamps or tape required.
No. WBQ pair

KWIK-LOK ARROW HOLDER holds arrow in a constant "ready". Releases upon draw. Self-adhesive backing. Fits all bows.
No. KL each

CAMO BOW SLEEVES fit over limbs and eliminate reflection. Held in place by elastic stitching for easy removal.
No. CFS pair

SHOULDER STYLE HUNTING QUIVER with roomy, zippered pocket. Finely crafted of heavy duty vinyl. Has arrow divider strap and adjustable shoulder strap.
No. HQ-22 each

WIKI-WIKI BOW QUIVER has attaching bracket that mounts permanently to bow. Quiver is then held to bracket with simple wing nut for easy removal. Durable construction with soft, long lasting arrow holders.
No. BQ-5 holds 5 arrows each
No. BQ-9 holds 9 arrows each

PRO BOWSIGHT is improved, removable model with double adjustment. Sight accepts prism, pins or double wire aperture. Equipped with water proof tape for calibrating.
No. M-50 each

PRO BOWSIGHT with windage and elevation adjustment.
No. M-10 each

BULLET-TYPE ARROW POINT 5/16 inch outside diameter.
No. BP-30 dozen

PARALLEL ARROW POINT 5/16 inch outside diameter.
No. PP-50 dozen

SPECIAL NON-SKID blunt nosed field point. 11/32 diameter. 5° taper core.
No. SNS-35 Pkg. of 6

PLASTIC ARROW NOCKS. 11/32 inch diameter.
No. PN-11 dozen

PLASTIC ARROW NOCKS. 5/16 inch diameter.
No. PN-16 dozen

BRUSH BUTTONS. Large size. Slipped onto bowstring ends, they prevent bowstring and bow limb intersection from hanging on brush in hunting.
No. BBL pair

BOWSTRING WAX 1-ounce cake.
No. BW each

BOWSTRINGER. For safely and easily bracing any bow up to 70 pounds without danger of twisting limbs. Blister packaged on card.
No. BS each

FLETCHING CEMENT. Made by Bohning especially for all arrow shafts. All purpose, also for wood, glass, leather, cloth and china. 3/4 oz. tube.
No. M-25 each

DOUBLE LOOP BOWSTRINGS. Dacron. Served at loops and at the center. Specify loop length and weight when ordering.
No. DS Bowstrings. Specify AMO standard lengths.
52" 58" 64" 70"
54" 60" 66"
56" 62" 68"

No. CDS Bowstring for York compound 39" loop to loop.

SINGLE LOOP BOWSTRINGS. Dacron. Served at the arrow nocking area. If nock-to-nock bow length cannot be determined exactly, order single loop strings, as plain end permits adjustment. Available in three lengths.
No. RS-1 for bow 56 to 60 in.
No. RS-2 for bow 60 to 64 in.
No. RS-3 for bow 64 to 68 in.

LOW PRICE HEMP BOWSTRINGS. Braided, single loop. One size, for bows to 70 inches in length.
No. FS

NOCKING POINTS. Shrinks easily and securely to bowstring with application of heat. Provides positive nocking point.
No. STN Pkg. of 4

ARROW REST. A Hoyt Flex rest that is ready to apply in seconds with pressure sensitive tape.
No. AR each

BOW TIP PROTECTORS of tough vinyl plastic. Protect bowtips and hold string in place.
No. PBT pair

T-50

TARGETS, STANDS and FACES by YORK



SKIRTED TARGET FACE in four colors with skirt and draw string, making it easy to apply to target mat. Of a spun woven synthetic material, it is waterproof and non-glaring.

No. TF-48 48 inch each
No. TF-36 36 inch each

SQUARE TARGET FACE made of same material as above, but square and unskirted. Attach with YORK No. TP Target Pins for best results.

No. SF-48 48 inch each
No. SF-36 36 inch each

PAPER TARGET FACES in four colors on heavy stock non-glare paper. Supplied rolled, no folds. For best results, attach with YORK No. TP Target Pins.

No. PF-48 48 inch each
No. PF-36 36 inch each
No. PF-24 24 inch each
No. PF-16 16 inch each

CORRUGATED BOX TARGET is handy for beginners, makes up into 18 x 18 x 4 in. box. Stuff with papers or rags then tape closed. Four-color face on main panel.

No. CT-16 16 inch each

TARGET STAND of soft Philippine mahogany to protect arrows.

No. T-50 for 36 inch each
No. T-60 for 48 inch each

TARGET MATS are tournament approved. Of Indian cord grass, covered with burlap. Chemically treated for longer life, greater stopping power and resistance to vermin.

No. MG-48 48 inch 55 lbs. each
No. MG-36 36 inch 30 lbs. each
No. MG-24 24 inch 16 lbs. each

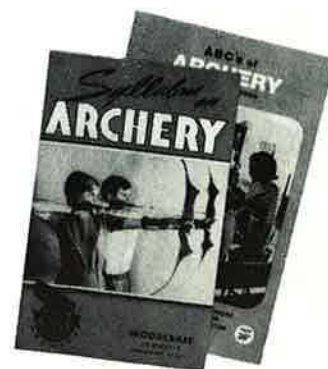
TARGET FACE PINS have new "easy in" lock design. One quarter turn locks pin and face securely to target mat. Large head holds face firmly, even in high winds.

No. TP pack of 4

The YORK Warranty

Every YORK product is warranted to be free of defects in workmanship and materials. Any item which appears defective, and shows no evidence of mishandling or misuse, should be sent prepaid direct to YORK Archery, Independence, Missouri, for replacement or repair.

In over half a century of making fine archery equipment, YORK has developed a team of designing skill and production know-how that is unsurpassed in the industry. It is this team that makes the YORK Warranty possible.



FREE! to teachers, coaches and dealers

Two booklets on archery basics — form, choosing the proper equipment, tips on instruction, etc. *ABC's of Archery* from AMO, *Syllabus on Archery* by the seasoned veterans at YORK. Please send your requests on school or company letterhead.



OVER HALF A CENTURY OF SERVICE TO THE ARCHER
P.O. BOX 110 • INDEPENDENCE, MO. 64051 • (816) 252-9612

YORK Archery

Woodcraft Equipment Company

P. O. Box 110

Phone 816 - 252-9612

INDEPENDENCE, MISSOURI 64051

NET PRICE LIST - EXCISE TAX EXEMPT*

Effective January 1, 1976

Usable Price List

*IMPORTANT NOTE: The prices below do not include Federal Excise Tax of 11%. These prices should only be used by dealers who are purchasing for resale to tax exempt institutions. A copy of the exemption certificate on the reverse side of this price list must be completed by the institution and submitted with the dealers purchase order or tax will be added to invoice.

COMPOUND BOWS			
KBS	Coronet	1 - 9	ea \$43.25
		10 or more	ea 40.00

COMPOSITE BOWS			
RRS	Crest		ea 35.00
GBF	Crescent		ea 26.00
BFB	Cadet		ea 18.00
KFT	Trophy		ea 38.00
RRH	Thunderbolt		ea 33.00
MPH	Tracker		ea 26.00

FIBERGLASS BOWS			
RG-60	Recurve		ea 8.55
RG-54	"		ea 5.35
SG-64	Straight limb		ea 7.20
SG-60	"		ea 6.50
SG-54	"		ea 4.00

TARGET ARROWS			
ATA	Matched aluminum	dz	19.00
GTA	Matched fiberglass	dz	16.50
CA	Matched cedar	dz	6.00
BA	Standard cedar	dz	4.10
BA-1	"	gross	40.00
BA-2	"	h/gr	21.50

PRACTICE TARGET ARROWS			
JA	Beginners	dz	3.50
JA-1	"	gross	34.00
JA-2	"	h/gr	18.50
25A-1	Economy	gross	31.00
25A-2	"	h/gr	17.00

FIELD ARROWS			
ARN	Deluxe cedar	dz	7.20
BFA	Standard cedar	dz	5.80
BFA-B	"	4 dz/pk	21.50
39FA-2	Practice cedar	h/gr	21.00
FFA	Flu Flu	4/pk	4.90

HUNTING ARROWS			
AHA	Aluminum (no pts)	dz	21.00
AHA-FL	"	dz	20.20
GHA	Fiberglass	dz	18.00
GHA-FL	"	dz	17.20
HA	Deluxe cedar	dz	11.50
HAS	Standard cedar	dz	9.20
HAS-FL	" (no pts)	dz	5.50
GFA	Fiberglass fish	ea	2.10

TARGET & FIELD QUIVERS			
TFQ-P	Tournament-side	ea	6.25
LQ-20	Deluxe-side	ea	2.50
AQ-17	Economy-side	ea	.90
WQ	Ground quiver	ea	2.25
HQ-22	Shoulder	ea	6.80

BOW QUIVERS			
WBO	Stalker	pr	.80
BQ-5	Wiki-wiki	ea	9.00
BQ-9	"	ea	9.80

GLOVES			
AG-26	Elastic back	ea	1.70
AG-24	Economy style	ea	.95

TABS			
AG-19	Pro style	ea	\$.60
AG-22	Beginners	ea	.30
AG-17	Western style	ea	.30

ARM GUARDS			
AG-31	Ventilated	ea	1.75
AG-10	Standard	ea	1.50
AG-20	Economy	ea	.95
AG-15	Single-hook	ea	.50
AG-50	Training	ea	1.50
HG-40	Hunting	ea	1.20

BOWSTRINGS			
DS	Double-loop	ea	.81
CDS	Compound	ea	.81
RS	Single-loop	ea	.75
FS	Hemp single-loop	ea	.35

ACCESSORIES			
M-50	Pro bowsight	ea	6.90
M-10	Pro bowsight	ea	2.40
BP-30	Bullet points	dz	.55
PP-50	Parallel points	dz	.60
SNS-35	Non-skid points	6/pk	.60
PN-11	Plastic nocks	dz	.45
PN-16	"	dz	.45
BBL	Brush buttons	pr	.67
BW	Bowstring wax	ea	.50
BS	Bowstringer	ea	1.60
M-25	Fletching cement	ea	.58
STN	Nocking points	4/pk	.60
AR	Arrow rest	ea	.55
PBT	Bowtip protectors	pr	.45
NBS	Silencers	pr	.61
M-55	Fishing reel	ea	3.05
CFS	Camo bow sleeves	pr	1.20
KL	Kwik-lok	ea	2.00

HUNTING & FISHING POINTS			
HP-3	Three bladed	3/pk	1.20
HP-4	Four bladed	3/pk	1.80
DFP	Reversible fish	ea	.50
AP-9	Adapta-field point	6/pk	.70
AP-5	Adapta-hunting point	3/pk	2.60

TARGETS, STANDS & FACES			
TF-48	Skirted, weatherproof	ea	3.50
TF-36	"	ea	2.80
SF-48	Square, weatherproof	ea	2.70
SF-36	"	ea	2.00
PF-48	Heavy paper	ea	1.60
PF-36	"	ea	1.10
PF-24	"	ea	.55
PF-16	"	ea	.28
CT-16	Box target	ea	.70
T-50	5' Target stand	ea	4.25
T-60	6' " "	ea	4.50
MG-48	Target mat	ea	30.50
MG-36	"	ea	19.25
MG-24	"	ea	10.50
TP	Target face pins	4/pk	.64