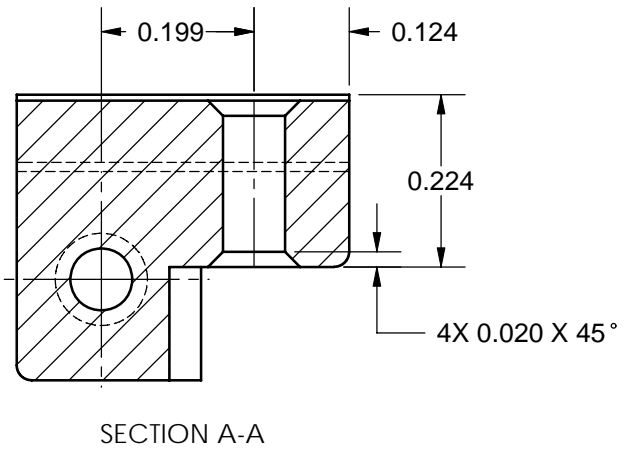
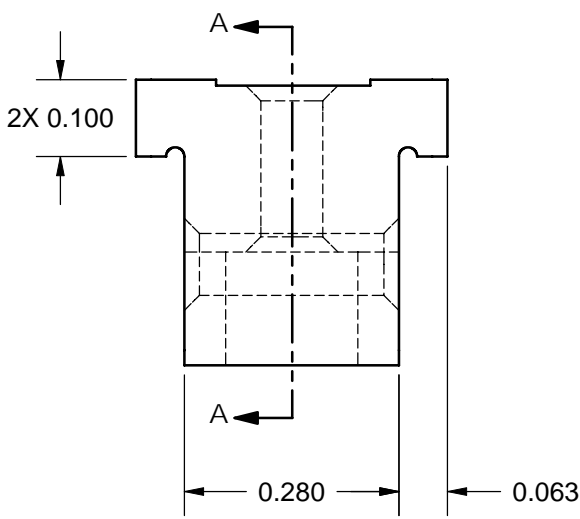
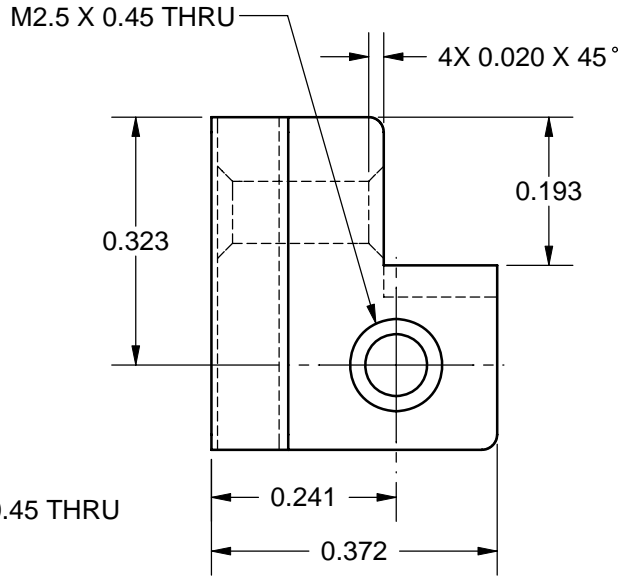
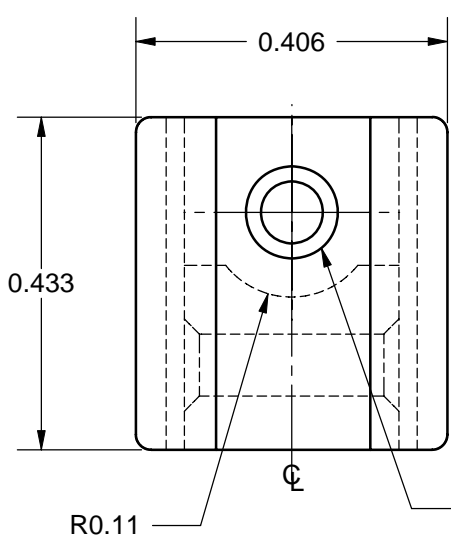
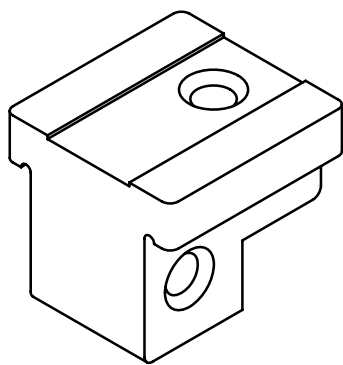


REVISIONS				
ZONE	REV	DESCRIPTION	DATE	APPROVED
ALL	A	INITIAL RELEASE	03/25/14	



3250-0017-02 DETAIL



3250-0017-01 PARTS LIST

FIND NO	PART NO	DESCRIPTION	QTY	U/M
1	3250-0017-02	L-BRACKET, PCB MOUNT	1	EACH
2	88000056	M2.5 X 8mm PAN HEAD SCREW	1	EACH
3	95000003	M2.5 X 8mm FLAT HEAD SCREW	1	EACH

- 4. THREAD GAGING : ASME / ANSI B1.3-2007
 - 3. FINISH: CLEAR ZINC PLATE PER ASTM-B633, CLASS 3, TYPE I
 - 2. MATERIAL: DIN 1743-GD-ZnAl4Cu1, ZINC CASTING ALLOY
 - 1. REMOVE ALL BURRS & SHARP EDGES
- NOTES : UNLESS OTHERWISE SPECIFIED

UNLESS OTHERWISE SPECIFIED	
DIMENSIONS ARE IN INCHES	
TOLERANCES:	
DEC X.X	±0.05
DEC X.XX	±0.030
DEC X.XXX	±0.010
FRACTIONS	±0.050
ANGLES	±1°
GD & T : ASME Y14.5-2009	
MATERIAL	2
FINISH	3
DO NOT SCALE DRAWING	

NAME	DATE
DRAWN TRUSHAR	03/25/14
CHECKED	
ENG APPR.	
Q.A.	
THIRD ANGLE PROJECTION	

VECTOR 11115 VANOWEN ST., NORTH HOLLYWOOD, CA 91605 www.vectorelect.com

L-BRACKET, METAL PCB MOUNTING

SIZE DWG. NO. **A** 3250-0017-01 **A**

SCALE: 4:1 CAGE CODE: 82893 SHEET 1 OF 1