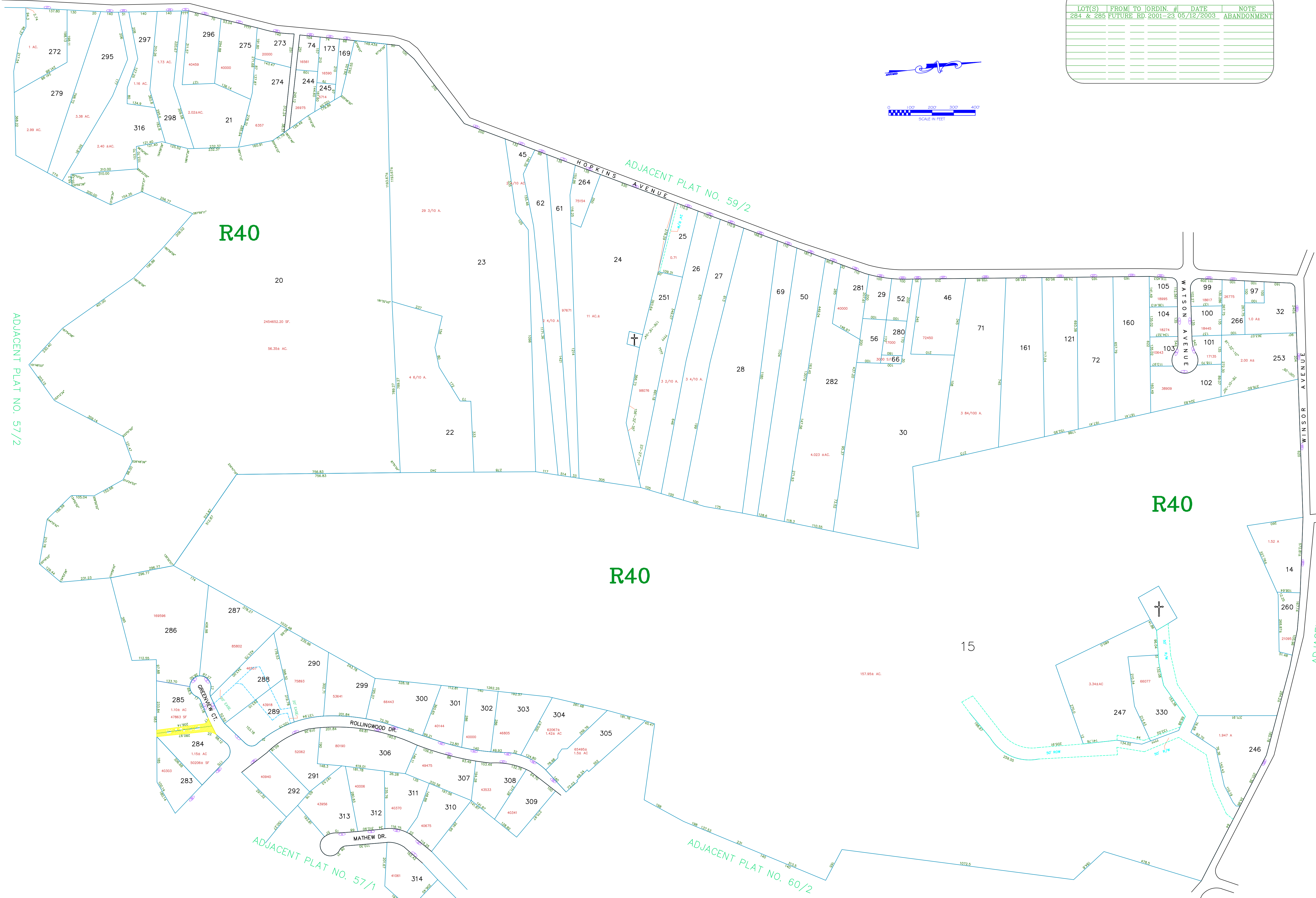
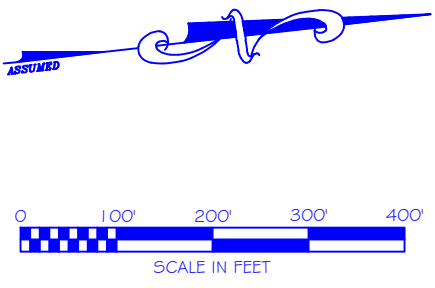


# ASSESSOR'S MAP

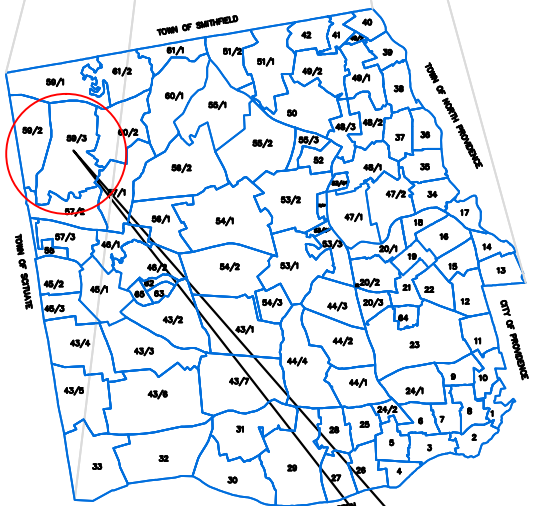
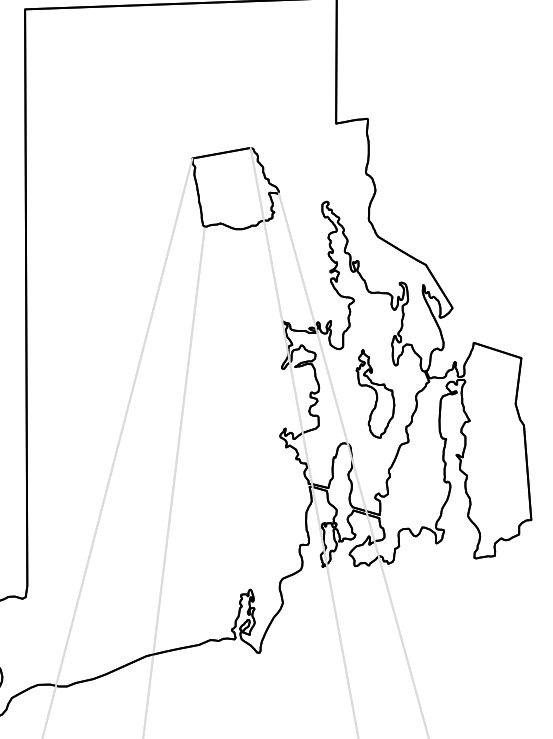
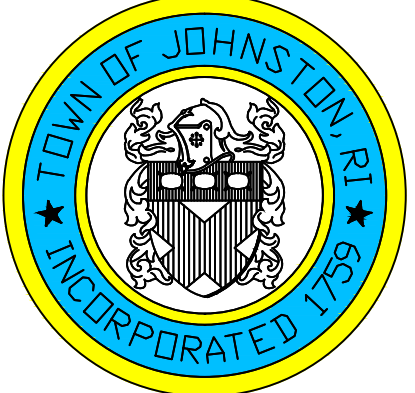
## SHOWING ZONING DISTRICTS

AMENDMENTS				
LOT(S)	FROM TO	ORDIN. #	DATE	NOTE
284 & 285	FUTURE RD.	2001-23	05/12/2003	ABANDONMENT



Assessor's Plat Number  
**59/3**

STATE OF RHODE ISLAND  
TOWN OF JOHNSTON  
PROVIDENCE COUNTY  
INCORPORATED 1759  
ASSESSOR'S OFFICE  
1385 HARTFORD AVENUE  
JOHNSTON, RHODE ISLAND  
02919



PLAT INDEX  
AREA

Scale: 1:200  
Revised By: Benjamin Ng  
Last updated: January 05, 2015  
Date printed: January 04, 2016

For copies of plat maps, please go to the DPW at 100 Irons Avenue Johnston Rhode Island. Thank you.

NOTE: This map was prepared for the use of the Town of Johnston for assessment and illustrative purposes only. It does not represent a survey of the premises. No liability is assumed as to the sufficiency or accuracy of the data delineated hereon.