

# Nimmitabel Show

## Horse and Show Shear Schedule

**Saturday 7th February 2026**

**[www.nimmitabelshow.com.au](http://www.nimmitabelshow.com.au)**

Nimmitabel Showground, 37 Ryedale Rd

Gates open 7.30am

President: Ben Litchfield

Secretary: Jackie Thompson



# Proud Sponsor of the Nimmitable Show

Energy makes a difference to our communities and we have millions of end users from homes, businesses and communities, relying on the infrastructure we build and maintain to power their lives each day.

Visit [www.Zinfra.com.au](http://www.Zinfra.com.au)



# Admission and General Information



Show Day: Saturday 7th February 2026  
Gates Open at 7.30am

Adults (no concessions)	\$15.00
Aged Pensioner	\$10.00
Children 13 to 16	\$5.00
Children 12 and under	FREE
Membership Fee	\$10.00

**All exhibitors attending on Show Day must pay the gate entry fee.**

**All Competitors and Exhibitors must sign an indemnity / Waiver Form and**

**Showground entry form for vehicles.**

**Please obey all parking signs and leave road access free at all times.**

**Wristbands will be provided and must be worn at all times.**

All other enquiries to the Show Secretary:

Jackie Thompson 0467214917

Email: [secretary@nimmitabelshow.com.au](mailto:secretary@nimmitabelshow.com.au)

Visit our website for more information:

[www.nimmitabelshow.com.au](http://www.nimmitabelshow.com.au)

<b>Horse Stewards</b>	Tabitha & Rodney Doyle	0403502664
	Pam Shelley	64 522913
<b>Stockman's Challenge</b>	Bailey Rogers	0475145368
<b>Bush Kid's Challenge</b>	Debbie Schubert	0407405467
	Tracey Mackay	0409490902
<b>Show Shear</b>	Aidan Copp	0455287845

# Nimmitabel Show Society Inc. Officials

<b>President</b>	Ben Litchfield	0428445064
<b>Vice President</b>	Richard Blyton	02 64546385
<b>Secretary</b>	Jackie Thompson	0467214917
<b>Treasurer</b>	Judy Taylor	0411894400
<b>Pavilion Coordinator</b>	Karen Morris	0467524627
<b>Pavilion Coordinator</b>	Maryanne Renfrey	0411629360
<b>Schedule Coordinator</b>	Jenny Alcock	02 64536244
<b>Webpage Coordinator</b>	Jerrod Blyton	0490684591
<b>Grants Coordinator</b>	Jenny Alcock	02 64536244
<b>Chief Ring Steward</b>	Tabitha Doyle	0403502664
<b>Youth Coordinator</b>	Jackie Thompson	04 67214917
<b>Public Officer</b>	Howard Charles	04 29446481
<b>Grounds Coordinator</b>	Ian Renfrey	04 03069839
<b>Gatekeepers</b>	Ray Wynan	0427273931
<b>Legal Advisor</b>	TBA	
<b>Committee</b>	Office bearers plus stewards	

## BBQ, Bar & Luncheon Pavilion

We will have plenty of food and refreshments available to satisfy all of your hunger needs!

The Lions Club will be cooking up a **BBQ** near the Bar area; grab a sausage sandwich and take a stroll through the pavilion where you'll find many a delight!

The **Luncheon Pavilion**, run by Berties Cafe, will have an array of lunches, soft drinks, coffee & tea available. You can sit down and relax in front of the horse ring 2 next to the secretary's office. **Morning & Afternoon Tea Available.**

At 2.00pm **CWA Scone Extravaganza** Afternoon tea commences in the main Pavilion. pavilion.





## Program of Events

<u>Time</u>	<u>Event</u>
8.00 am	Yard Dog Trials Commence
8.30 am	Horse Rings 1, 2, 3 & 4 Commence
8.30 am	Show Shearing Registrations
9.00 am	Side Show Activities Open
9.30 am	Zone Finals of Young Judging Competition
10.00 am	Animal Nursery Opens
10.00 am	Open Judging in the Pavilion
10.00 am	Sheep Judging Commence
10.00 am	Cattle Judging Commence
11.00 am	Chainsaw Competition
12.00 pm	<b>OFFICIAL OPENING</b>
12.15 pm	Poddy Calf Ride
2.00 pm	Nimmitabel Bush Kids Challenge
2.00 pm	CWA Scone Extravaganza Afternoon Tea
3.00 pm	Stockman's Challenge
6.00 pm	Open Dog High Jump

### **SPORTING EVENTS**

Entry \$3:00 1<sup>st</sup> \$5, 2<sup>nd</sup> \$3, 3<sup>rd</sup> \$1

- Barrel Race under 12yrs
- Barrel Race 12yrs and under 17yrs
- Open Barrel Race
- Bending under 12yrs
- Bending 12rs and under 17y
- Open Bending
- Bush Kids Challenge
- Stockmans Challenge

Please note sporting ring will be announced on the day. It will commence at the completion of the first ring to concluded

**Stockmans Challenge:** While riding a horse, competitors are to complete a course designed to demonstrate maximum skill, control and manoeuvrability of their horse in a time trial format. Entries taken on day or please call the Steward prior Show day. Rules and course available on show Day. Entry forms are available on our website. [www.nimmitabelshow.com.au](http://www.nimmitabelshow.com.au)

**Bush Kids Challenge: Starts 2pm-3pm**  
**\$2 entry fee. Waiver must be signed before entering. The event will include lots of fun challenges and lots of prizes including Apple bobbing, egg race, obstacle race, sack race etc. Primary school age 5 to 12 years. Lots of prizes.**

# Nimmitabel Showground

Horse Float and  
truck parking

Warm up  
Lunging area

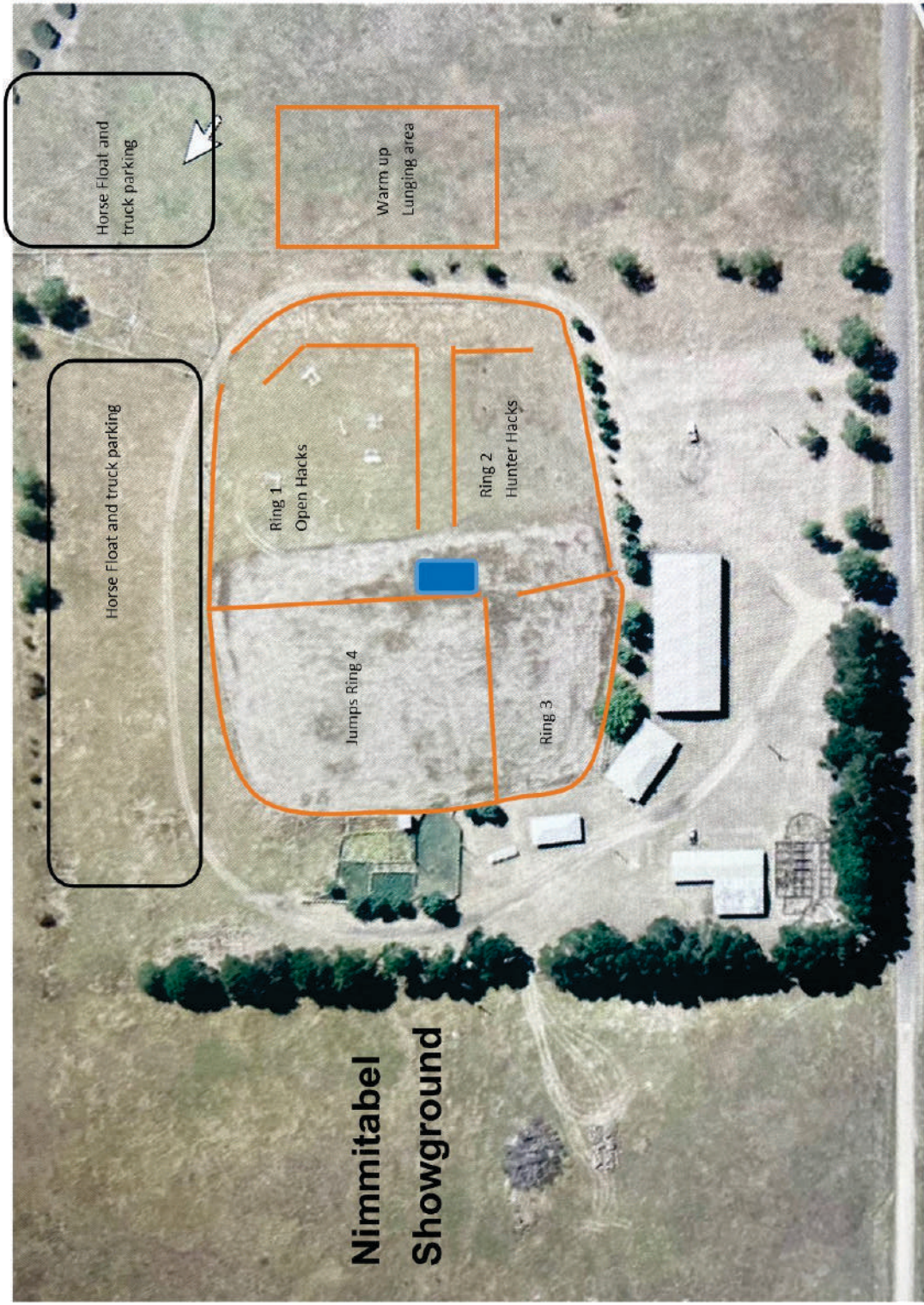
Horse Float and truck parking

Ring 1  
Open Hacks

Ring 2  
Hunter Hacks

Jumps Ring 4

Ring 3



# How to enter Horse events

The ticket box will open on Saturday the 7th of February from 6.30am.

## Show Regulations

Programs in Rings 1, 2, 3 & 4 commence at 8.30am.

Helmets must be worn in all events.

**Any horse misbehaving or not under thorough control may be asked to leave the ring.**

**Stallions:** Stallions must have bit in mouth in their respective classes.

Stallions must be led or ridden by a person over the age of 18.

Stallions must be double tethered.

In the event of a competitor having entered classes in different rings, if classes are on at the same time, **NO** disruption to program will be tolerated, except at the Head Steward's discretion.

In the event of a horse appearing to be too big or too small it will be at the discretion of the steward or judge to have the horse measured by the Society's Official Measurer.

**NO parents, spectators or unauthorised persons allowed in the arena (which includes all 4 ring event areas).**

All competitors must enter and leave the ring at a walk; **ANY** person infringing this regulation will be disqualified from the competition.

In any flag or bending race, no rider will be permitted to ride more than two horses and must wear an approved helmet.

Ribbons will be awarded as stated in the schedule.

All spurs to be taped or have rollers removed.

Participants in Registered classes will need to prove registration if requested.

Exhibits which compete in Show Hunter classes are not able to compete in Open or Novice Open Hack classes but may compete in any relevant breed classes.

Show Hunters are required to be correctly attired and equipped including plain leather bridle-wear.

Hunter riders should be wearing a tweed type jacket. .

Novice events are open to any horse that has not won first place in a novice or open hack event at any Royal.

A fee of \$50.00 may be lodged with disputes in writing 30 minutes after completion of judging. The fee will be forfeited if the committee considers the protest frivolous

Show reserves the right to test horse exhibits for prohibitive substances.

Judges decisions are final.

All required forms are available on our web page [www.nimmitabelshow.com.au](http://www.nimmitabelshow.com.au)

**All 4 rings will stop at 12 noon for the official opening of the Show.**



# THE NIMMITY BELL SHOWJUMPING POINTSORE

Established in 1981

**SPONSORED BY VILLAGE FORD - BOMBALA AND ALPINE MOTOR GROUP –**

**COOMA AND PARTICIPATING SHOW SOCIETIES Please Note:**

**2019 revised rules made by show committees**

Prizes: Rug + 1st \$450; 2nd \$240; 3rd \$160; 4th \$115; 5th \$60

The “Nimmity Bell” show jumping pointscore is a competition run over 4 shows – Nimmitabel, Delegate, Dalgety and Bombala. The “Nimmity Bell” trophy is to be awarded to the horse & rider combination with the highest pointscore in open competition over 4 shows. This will be awarded at the completion of EA events at the Bombala Show.

1. Only horses registered with the EA of NSW are eligible for the pointscore. Horses can only score in EA events in classes **1.10m** or higher, the event has a total prize pool worth \$100 or more, the event is officiated by an EA accredited Judge and Course Designer. All entrants in these events will be eligible for the “Nimmity Bell Pointscore” regardless of the total amount of entries in one class.
2. A horse & rider combination can only score once at each show. This score will be their best placing from that show. If a horse fails to place in an event, it will score zero for that show. The points will be awarded as follows: 1st = 5 points, 2nd = 4 points, 3rd = 3 points, 4th = 2 points, 5th = 1 point, **no placing yet eligible = 0 points. In the case of “tied” placings the points will be spilt, the same way as prizemoney.**
3. **Horses must compete at all 4 shows** to be eligible for the “Nimmity Bell Pointscore”. The only exception will be if an official vet / doctor’s certificate is presented to the official scorer indicating the horse/ rider’s inability to compete at one of the 4 shows. .
4. Results will be forwarded to Bombala Show for recording from the official Judge/show committee of each show and then allocated points according to the rules above. Any disputes regarding the “Nimmity Bell Pointscore” must be directed to the official point scorer to be dealt with. Official protest/s must be made in writing within 1 hour of the class being completed and must be accompanied by \$50.00 and presented to the Official Point scorer. All events are EA events and will be run in accordance to EA rules.

**Please note: It is requested that EA summer dress standards apply for competitors at all four shows** (no polo shirts – shirt with tie or stock to be worn).

**Overall prize money will be awarded to the top 5 place getters at the completion of EA events at Bombala Show.**



# ZINFRA Nimmitabel Show 2026 Horse section

## Ring 1 - Open Hacks

Start: 8:30am

Entry \$3:00 1<sup>st</sup> \$5, 2<sup>nd</sup> \$2, 3<sup>rd</sup>

### LED OPEN PONY

- 101. Led Pony ne 12hh
- 102. Led Pony 12hh - 13hh
- 103. Led Pony 13hh - 14hh
- 104. **Champion and Reserve Champion  
Led Pony**

### LED OPEN GALLOWAY

- 105. Led Galloway 14hh -14.2hh
- 106. Led Galloway 14.2 -15hh
- 107. **Champion and Reserve Champion  
Led Galloway**

### LED OPEN HACKS

- 108. Led Hack over 15hh -16hh
- 109. Led Hack over 16hh
- 110. **Champion and Reserve Champion  
Led Hack Sponsored by Jemena**

### ***Supreme Led Open Hack***

(Winners from class 104,107 and 110 eligible)

### RIDDEN OPEN PONY

- 111. Novice Open Pony
- 112. Open Pony under 12hh
- 113. Open Pony 12hh ne 13hh
- 114. Open Pony 13hh ne 14hh
- 115. Child Open Pony ridden under 18yrs
- 116. Adult Open Pony ridden over 18yrs
- 117. **Champion and Reserve Champion  
Open Pony**

### RIDDEN OPEN GALLOWAY

- 118. Novice Galloway
- 119. Open Galloway 14hh -14.2hh
- 120. Open Galloway 14.2hh -15hh
- 121. Child Open Galloway under 18yrs
- 122. Adult Open Galloway over 18yrs

- 123. **Champion and Reserve Champion Open  
Galloway Sponsored by Jemena**

### RIDDEN OPEN HACKS

- 124. Novice Hack
- 125. Open Hack 15hh -15.2hh
- 126. Open Hack 15.2hh -16hh
- 127. Open Hack over 16hh
- 128. Childs Open Hack ridden under 18yrs
- 129. Adults Open Hack ridden over 18yrs
- 130. **Champion and Reserve Champion  
Ridden Open Hack**

### CHILD RIDING CLASSES

- 131. Child rider Under 12yrs
- 132. Child Rider 12yrs and under 15
- 133. Child Rider 15 and under 18
- 134. **Champion and Reserve Champion Child  
Rider**

### ADULT RIDER

- 135. Adult Rider 18yrs and under 30yrs
- 136. Adult Rider 30yrs and over
- 137. **Champion and Reserve Champion Adult  
Rider Sponsored by**

### ***Supreme Rider***

(Winners from class 134 and 137 eligible)

# Nimmitabel Show Horse Events

## Ring 1 Open Hacks cont..

### **SECOND CHANCE SHOW HUNTERS**

#### **RIDDEN SHOW HUNTER PONY**

- 138. Show Hunter Pony n.e 13hh
- 139. Show Hunter Pony 13hh -14hh
- 140. **Champion and Reserve Champion Open Pony**

#### **RIDDEN SHOW HUNTER GALLOWAY**

- 141. Show Hunter Galloway 14hh -14.2hh
- 142. Show Hunter Galloway 14.2hh -15hh
- 143. **Champion and Reserve Champion Open Galloway**

#### **RIDDEN SHOW HUNTER HACK**

- 144. Show Hunter Hack 15hh -16hh
- 145. Show Hunter Hack Open Hack over 16hh
- 146. **Champion and Reserve Champion Open Galloway**

### ***Supreme Ridden Open Hack of the Nimmitabel Show Sponsored by Jemena***

(Winners from class 117, 123, 130 and 233, 236, 239 eligible)

### ***Supreme Ridden Hunter Hack of the Nimmitabel Show Sponsored by Jemena***

(Winners from class 217, 223, 230 and 140, 143, 146 eligible)

## Sponsors of the Ring Events at the 2026 Nimmitabel Show

**Jemena**  
**Mitre 10 Cooma**  
**Greenland Jewellery**  
**D & B Litchfield**  
**Kelly Racing Stables**  
**Bill Buckley Weed**  
**Spraying**  
**Kaludah Stud**  
**Clare Buckley**

We would like to acknowledge the support of the above companies, businesses and people who have greatly contributed to our Horse events. Without the support from the list above we would not be able to put on the best country show in the region.



# Zinfra

Your trusted partner  
in energy

# Ring 2– Show Hunter Hacks

## Ring 2- Show Hunter Hacks

**Start 8:30am**

Entry \$3:00 1<sup>st</sup> \$5, 2<sup>nd</sup> \$2, 3<sup>rd</sup>

### LED SHOW HUNTERS PONY

- 201. Led Show Hunter Pony ne 12hh
- 202. Led Show Hunter Pony 12hh -13hh
- 203. Led Show Hunter Pony 13hh - 14hh
- 204. **Champion and Reserve Champion Led Show Hunter Pony**

### LED SHOW HUNTERS GALLOWAY

- 205. Led Show Hunter Galloway 14hh-14.2hh
- 206. Led Show Hunter Galloway 14.2-15hh
- 207. **Champion and Reserve Champion Led Show Hunter Galloway**

### LED SHOW HUNTERS HACK

- 208. Led Show Hunter Hack 15hh -16hh
- 209. Led Show Hunter Hack over 16hh
- 210. **Champion and Reserve Champion Led Show Hunter Hack** *Sponsored by Jemena*

### **Supreme Led Show Hunter Horse**

(Winners from class 204, 207 and 210 eligible)

### RIDDEN SHOW HUNTER PONY

- 211. Novice Show Hunter Pony
- 212. Show Hunter Pony under 12hh
- 213. Show Hunter Pony 12hh ne 13hh
- 214. Show Hunter Pony 13hh ne 14hh
- 215. Child Show Hunter Pony under 18yrs
- 216. Adult Show Hunter Pony over 18yrs
- 217. **Champion and Reserve Champion Show Hunter Galloway**

### RIDDEN SHOW HUNTER GALLOWAY

- 218. Novice SH Galloway 14hh -15hh
- 219. Show Hunter Galloway 14hh -14.2hh
- 220. Show Hunter Galloway 14.2hh -15hh
- 221. Child SH Galloway under 18yrs
- 222. Adults SH Galloway over 18yrs
- 223. **Champion and Reserve Champion Show Hunter Galloway** *Sponsored by Jemena*

### RIDDEN SHOW HUNTER HACK

- 224. Novice Show Hunter Hack
- 225. Show Hunter Hack 15hh - 15.2hh
- 226. Show Hunter Hack 15.2hh -16hh
- 227. Show Hunter Hack over 16hh
- 228. Childs Show Hunter Hack under 18yrs
- 229. Adults Show Hunter Hack over 18yrs
- 230. **Champion and Reserve Champion Show Hunter Hack**

### RIDDEN OFF THE TRACK

#### THOROUGHBREDS

- To be eligible horses must have raced
- 201. Off the Track Thoroughbred 15hh -16hh
  - 202. Off the track Thoroughbred over 16hh
  - 203. **Champion and Reserve Champion Ridden Off the Track Thoroughbred Rug** *Sponsored by Kelley Racing Stables*





# Nimmitabel Show Horse Events

Ring 2 cont.

## SECOND CHANCE OPEN HACKS

### RIDDEN OPEN PONY

- 231. Open Pony n.e 13hh
- 232. Open Pony 13hh -14hh
- 233. **Champion and Reserve Champion Open Pony**

### RIDDEN OPEN GALLOWAY

- 234. Open Galloway 14hh -14.2hh
- 235. Open Galloway 14.2hh -15hh
- 236. **Champion and Reserve Champion Open Galloway**

### RIDDEN OPEN HACK

- 237. Open Hack 15hh -16hh
- 238. Open Hack Open Hack over 16hh
- 239. **Champion and Reserve Champion Open Galloway**

## **Supreme Ridden Open Hack of the Nimmitabel 2026 Show Sponsored by Jemena**

(Winners from class 117, 123, 130 and 233, 236, 239 eligible)

## **Supreme Ridden Hunter Hack of the Nimmitabel 2026 Show Sponsored by Jemena**

(Winners from class 217, 223,230 and 140,143, 146 eligible)

**Principal.**  
Kitchens

# 10% OFF

## KITCHENS & LAUNDRIES\*

1 - 31 MARCH 2026

\*T&C'S APPLY



**AS SUPPLIED TO NIMMITABEL SHOW  
SOCIETY KITCHEN UPGRADE**





# Nimmitabel Show Horse Events

## Ring 3

Ring 3- All Breeds, ANSA and Australian Stock Horse

Start 8:30am

Entry \$3:00 1<sup>st</sup> \$5, 2<sup>nd</sup> \$2, 3<sup>rd</sup>

### **LED LARGE BREED OVER 14HH**

- 301. Led Thoroughbred
- 302. Led ANSA
- 303. Led Colour
- 304. Led Part Welsh
- 305. Led Warmblood
- 306. Led Arabian Derivative
- 307. Led any other breed
- 308. **Champion and Reserve Champion Led Breed/ Colour *Sponsored by Jemena***

### **LED PONY BREEDS N.E 14HH**

- 309. Led Pure Welsh
- 310. Led Part Welsh
- 311. Led Arabian/ Derivative
- 312. Led Shetland Pony
- 313. Led Coloured Pony
- 314. Led any other Pony breed
- 315. **Champion and Reserve Champion Led Pony Breed**

#### ***Supreme Led Breed***

(Winners from class 308 and 315 eligible)

### **RIDDEN LED LARGE BREED OVER 14HH**

- 316. Ridden Thoroughbred
- 317. Ridden ANSA
- 318. Ridden Colour
- 319. Ridden Part Welsh
- 320. Ridden Warmblood
- 321. Ridden Arabian Derivative
- 322. Ridden any other breed
- 323. **Champion and Reserve Champion Ridden Breed**

### **RIDDEN PONY BREEDS N.E 14HH**

- 324. Ridden Pure Welsh
- 325. Ridden Part Welsh
- 326. Ridden Arabian/ Derivative
- 327. Ridden Shetland Pony
- 328. Ridden Coloured Pony
- 329. Ridden any other Pony breed
- 330. **Champion and Reserve Champion Led Ridden Breed *Sponsored by Jemena***

#### ***Supreme Ridden Breed***

(Winners from class 323 and 330 eligible)

### **AUSTRALIAN STOCK HORSE CLASSES**

- 331. Led ASH Mare
- 332. Led ASH Gelding
- 333. Led Ash Stallion
- 334. **Champion and Reserve Led ASH**
  
- 335. Ridden ASH Mare
- 336. Ridden ASH Gelding
- 337. Ridden ASH Stallion or Colt
- 338. **Champion and Reserve Champion Ridden ASH**
  
- 339. Ridden ASH Hack under 15hh
- 340. Ridden ASH Hack 15hh and over
- 341. **Champion and Reserve Champion Ridden ASH Hack**
  
- 342. Working ASH Mare
- 343. Working ASH Gelding
- 344. Working ASH Stallion or Colt
- 345. **Champion and Reserve Champion Ridden ASH Hack**

#### ***Supreme Australian Stock Horse of the Nimmitabel show Rug Sponsored by***

(Winners from class 345, 341 and 338 eligible)

# Nimmitabel Show Horse Events

## Ring 4 Show Jumping Program

Steward — Tom Allen  
Course Builder — Jackie Perrott Jones

## Nimmitabel Show 2026 Show Jumping Program

**Saturday 7th February 2026**

- A single horse is allowed to compete in a maximum of 2 show jumping events not including six bar or rescue relay (novelty events).
- All horses competing in events 105m and above must be registered with the EFA
- Prize money will not be paid to competitors that have failed to provide their EFA registration number with entry fee
- Show jumping classes to be conducted under EFA rules.

### Ring 4 – Jumping

1. Cross-rails (approx. 30cm) for riders Under 13 years - one round un-timed – Everyone is a winner! **Entry \$3**

2. 50cm Super Two Phase – Article 274.5.6

Entry \$6 – 1<sup>st</sup> \$30+prize, 2<sup>nd</sup> \$20, 3<sup>rd</sup> \$10

3. 60cm Super Two Phase – Article 274.5.6

Entry \$6 – 1<sup>st</sup> \$30+prize, 2<sup>nd</sup> \$20, 3<sup>rd</sup> \$10



# Nimmitabel Show Horse Events

## Ring 4 Show Jumping program Cont..

Steward — Tom Allen  
Course Builder — Jackie Perrott Jones

4. 70cm Super Two Phase – Article 274.5.6

Entry \$8 - 1st \$40+rug, 2nd \$20, 3rd \$15

5. **Jemena** 50cm Rescue Relay

Entry \$16 for 2 riders – 1<sup>st</sup> \$80, 2<sup>nd</sup> \$40, 3<sup>rd</sup> \$20

### **Jemena Show Jumping**

6. **Greenlands Jewellery** 80cm

Entry \$12 – 1<sup>st</sup> \$50+rug, 2<sup>nd</sup> \$30, 3<sup>rd</sup> \$20

7. **Jemena** 90cm Super Two Phase – Article 274.5.6

Entry \$12 – 1<sup>st</sup> \$60+rug, 2<sup>nd</sup> \$40, 3<sup>rd</sup> \$30

8. EA official 1.00m-1.05m Event with immediate Jump-Off – Article 238.2.2&245.3

Entry \$15 – 1<sup>st</sup> \$80+rug; 2<sup>nd</sup> \$50, 3<sup>rd</sup> \$30, 4<sup>th</sup> \$20

9. **Jemena** EA official 1.10m-1.15m Event with Immediate Jump-Off – Article 238.2.2&245.3

Entry \$17 – 1<sup>st</sup> \$100+rug, 2<sup>nd</sup> \$70, 3<sup>rd</sup> \$40, 4<sup>th</sup> \$25, 5<sup>th</sup> \$15

10. 80cm rescue relay Entry for two riders \$30 – 1<sup>st</sup> \$200, 2<sup>nd</sup> \$100, 3<sup>rd</sup> \$60

Any Enquiries – please contact the Chief Horse Steward



**Zinfra**  
Your trusted partner  
in energy

# CONRAYN MERINO STUD SHOW SHEAR

Steward: Aidan Copp 0455287840

The Nimmitabel Show Shear Competition will be conducted under the rules and regulations as laid down by Australian National Shearing Association Inc.

- ✓ Registration 8:30am on Show Day
- ✓ Competition starts at 9am
- ✓ More than \$9000 prize money on offer
- ✓ Entry Fee \$35

## CONRAYN MERINO STUD Show Shear and Wool Handlers Competition:

1. Gordon Litchfield Wool Open Section
2. Jemalong Wool Senior Section
3. Hazeldean Intermediate Section
4. Monaro Livestock and Property Novice Section
5. Riverina Wool Tester's Golden Oldies Section
6. Monaro Wool Services Wool Handlers Section

For more details: visit website: [www.nimmitabelshow.com.au](http://www.nimmitabelshow.com.au).  
Or visit our Facebook page: [nimmitabelshow](https://www.facebook.com/nimmitabelshow).





**G & M Haylock  
Old Springfield  
Partnership  
Nimmitabel NSW**

**COONERANG  
ESTATES  
NIMMITABEL NSW**



**Tom Lewis  
Tynedale  
Nimmitabel NSW**

**Nandawar  
Partnership  
Nimmitabel NSW**



Livestock Marketing Specialists | AuctionsPlus Accredited | Rural Property Sales | Clearing Sales

Will Dixon P: 0427 025 809 | E: [will@monarolivestock.com.au](mailto:will@monarolivestock.com.au)

5/133 Sharp Street | Cooma NSW 2630

P: 02 6452 7747 | E: [info@monarolivestock.com.au](mailto:info@monarolivestock.com.au)



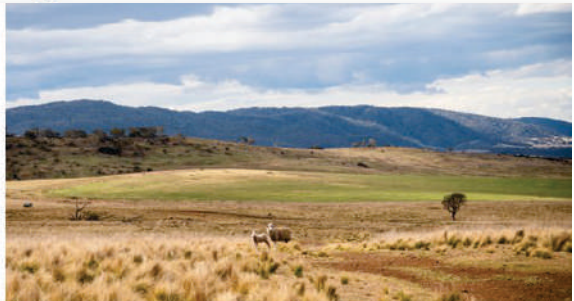
[www.jemalongwool.com.au](http://www.jemalongwool.com.au)

## JEMALONG WOOL

**Proudly Supporting Cooma and The Monaro**

Australia's original regionally based brokers.  
Proven results, modern marketing and  
outstanding service.

Join our client family today.



 02 6452 3130

 @jemalongwool

 16 Holland Road, Cooma

[jemalongwool.com.au](http://jemalongwool.com.au)

# CONRAYN SHOW SHEAR SPONSORS

Conrayn Merino Stud 1500	Gordon Litchfield Wool 600
Hazeldean Stud 600	Australian Wool Innovation Ltd
Monaro Wool Services 650	O & J Brewis 300
Monaro Livestock & Property 650	Anneleigh Poll Dorset & White
Shearing Contractors Ass. Australia 150	Suffolk Stud 300
Riverina Wool Testers 600	Jemalong Wool 650
Bindaree Merino Stud 300	Boudjah Merino Stud 300
Coolamatong Partnership 300	Nandawar 300
Coonerang 200	Tom Lewis 200
G & M Haylock 200	L & M Weston 200
Skyline Merinos 300	G & M Haylock 200



HAZELDEAN  
LITCHFIELD  
EST 1865



Where performance genetics drive  
commercial success.

Ed Bradley 0412298546  
Bea Litchfield 0427933103

**EVERYTHING  
EVERYTHING  
EVERYTHING**

**Heiniger**

**MACBro**

**Lister**

**EVERYTHING WOOL**  
GORDON LITCHFIELD  
PTY LTD

Doing more for  
the Woolgrower  
....from Shed to Ship



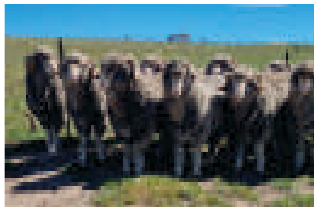
*Monaro Wool Services*

Ph: (02) 6452 4494





**NIMMITABEL SHOW SHEAR**



Bindaree Merino Stud strives to produce quick maturing, large framed, heavy cutting merinos with rich, nourished wool and soft productive skins. The last five sire rams purchased have been selected for the wool cut, wool quality and carcass traits.

**11<sup>th</sup> On Property Ram Sale**

**Wednesday 21st October 2026**



**FLOCK NO**

Bindaree Merino - 5098 - Est. 2015

Bindaree Poll Merino - 6017 - Est. 2022

**Lawrence & Melissa Clifford**

"Bindaree" 1001 Stoney Creek Road, Rocky Plain NSW

[lawrence\\_liss@outlook.com.au](mailto:lawrence_liss@outlook.com.au) / Mobile - 0423 902 561



Find us on Facebook



**SKYLINE MERINOS**  
**NIMMITABEL NSW**

**L & M Weston**  
**Nimmitabel**



**Coolamatong Partnership**  
**NSW**

**O & J BREWIS**  
**DUTTON PLAIN DALGETY NSW**





your wool  
our commitment



### Riverina Wool Testers

Wagga Wagga

12 Cheshire Street  
Wagga Wagga NSW 2650  
02 6925 1407  
rwt@wooltesters.com.au  
www.wooltesters.com.au

**Make Your Sheep  
More Profitable...  
Have your sheep tested!**



Australia's Leading  
Fleece Testing  
Company

Accredited Member of International Association  
of Wool Textile Laboratories

## HELPING YOU MAKE BETTER BREEDING DECISIONS.

SPECIALISING IN:

- ✓ Laboratory Testing  
(Micron, Yield, Staple Strength & Staple Length)
- ✓ Electronic Eartags & Equipment
- ✓ Rampower Indexes
- ✓ NLIS Eartags





**Proud Sponsors of Nimmitabel Show Shear**



# **CONRAYN**

## **MERINO STUD**

**PETER & JAYNE LETTE**

**0409 916 117**



# GETTING STARTED & GETTING BETTER

## AWI SHEARER & WOOL HANDLER TRAINING

AWI is providing free training for novice, improver and professional shearers and wool handlers, within its regional coaching program. The training focuses on skills development and increased productivity for shearers and wool handlers.

Trainers visit working sheds at the invitation of contractors, owners, managers, shearers and woolhandlers.

### TO ARRANGE TRAINING:

Call the AWI helpline on  
**1800 SHEARS (1800 743 277)** to make  
contact with a training organisation in  
your local area.



Australian Wool  
Innovation Limited