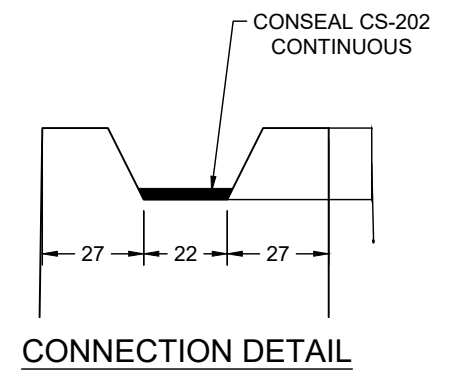
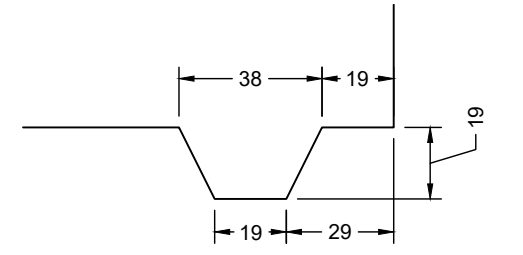


RELEASE	MPa	20
28 DAY:	MPa	35
AIR CONTENT:		6% ± 1%
WEIGHT:	kg	2275
VOLUME	m ³	1.449
TYPE:	kg/m ³	2402
STRAND	mm	-
	MPa	-

MARK	DESCRIPTION	QTY.



- NOTES:**
- 1) CEMENT : PORTLAND CEMENT TYPE 50(HS)
 - 2) Max AGGREGATE SIZE: 20mm
 - 3) 28 DAY STRENGTH: MIN. 35 MPa.
 - 4) ENTRAINED AIR: 6%±1%
 - 5) REINFORCING TO CAN/CSA-G30.18 400 MPa
 - 6) ALL UNITS ARE IN MILLIMETERS UNLESS OTHERWISE NOTED.

DWG. NO.	REFERENCE	NO.:	REVISION DESCRIPTION	BY	APP'D	DATE	DRW BY	SWM	2018/11/23
-	-	A	ISSUED PLAN	-	-	2018/11/23	CH'K BY	-	-
-	-	-	-	-	-	-	AP'D BY	-	-
-	-	-	-	-	-	-	AP'D BY	-	-
-	-	-	-	-	-	-	SCALE: NTS	PAGE: 1 OF 1	-

TITLE: 590 Gallon Septic Tank DETAIL DRAWING

PROJECT NO.: _____ JOB NO.: _____

DRAWING NO.: SVI-ST-590-01A