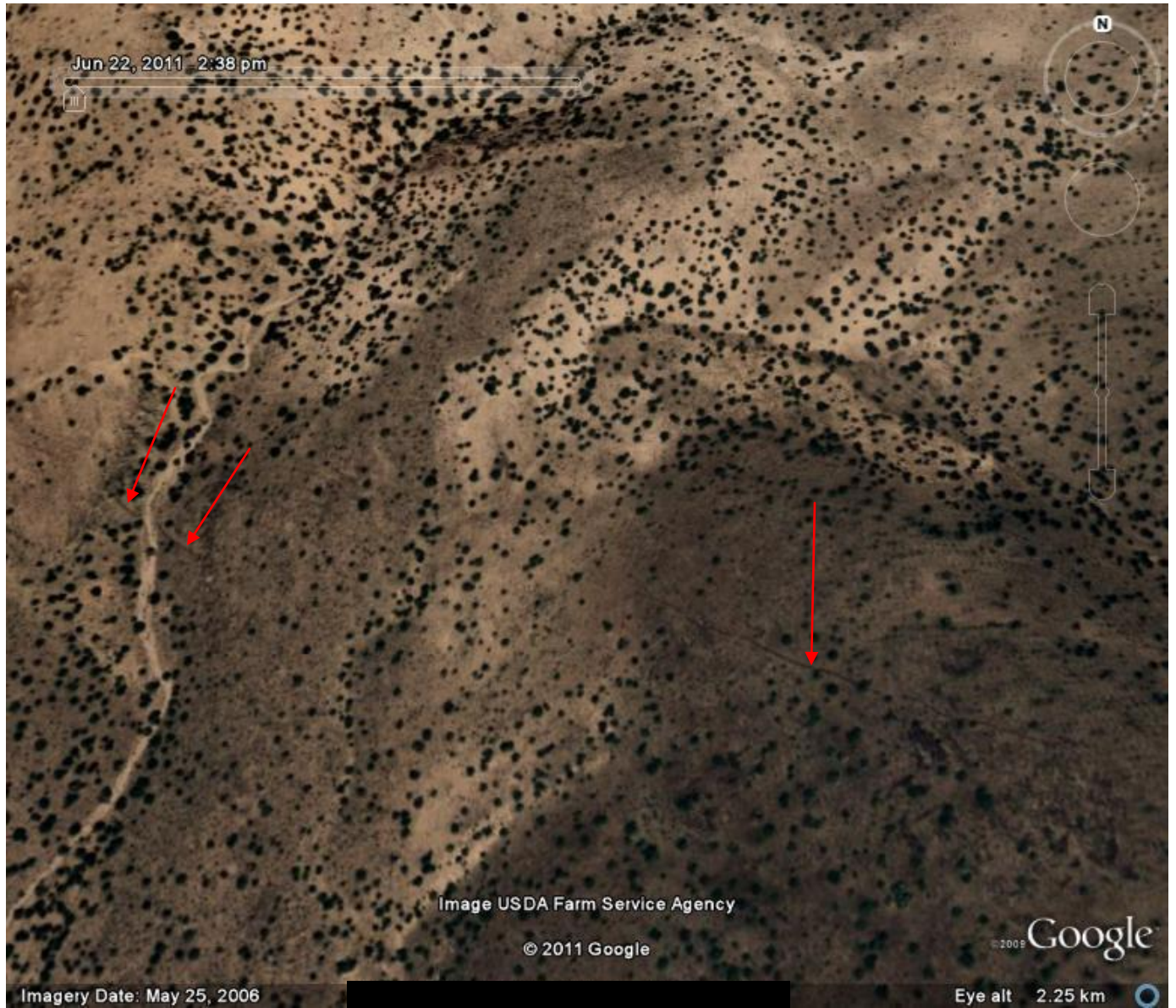




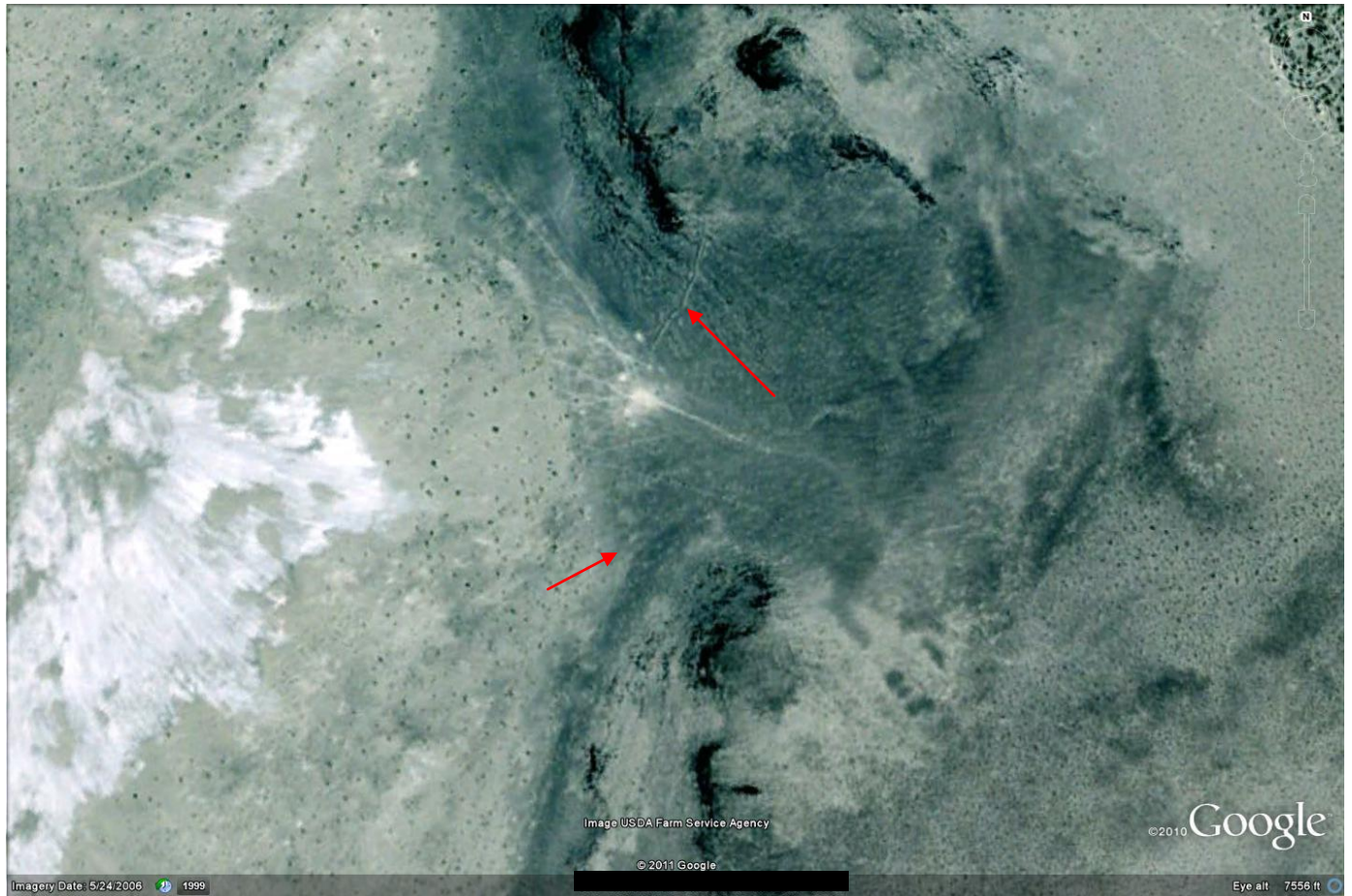
Antelope trap made of juniper limbs from eastern Nevada. Note that live juniper trees were incorporated into the back end of the corral wall.



Portions of the Fort Sage Drift Fence.



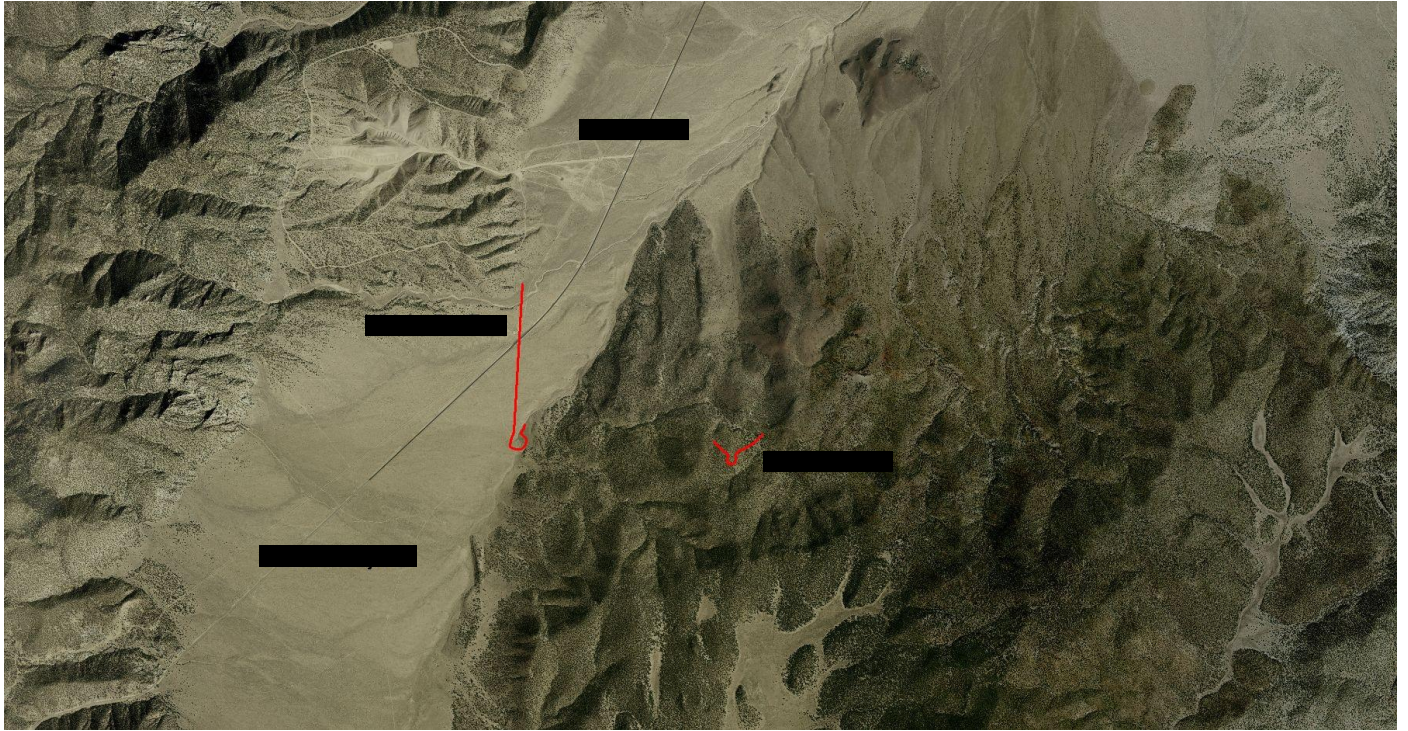
Another drift fence from central Nevada.



An antelope trap made of rock from western Nevada. Note the use of a topographic constriction here.



A very large antelope trap made of rock from eastern Nevada.



Two traps outlined in red from western Nevada. Note the use of a topographic constriction for one of the traps. The trap in the mountainous area may have been for deer rather than for pronghorn.