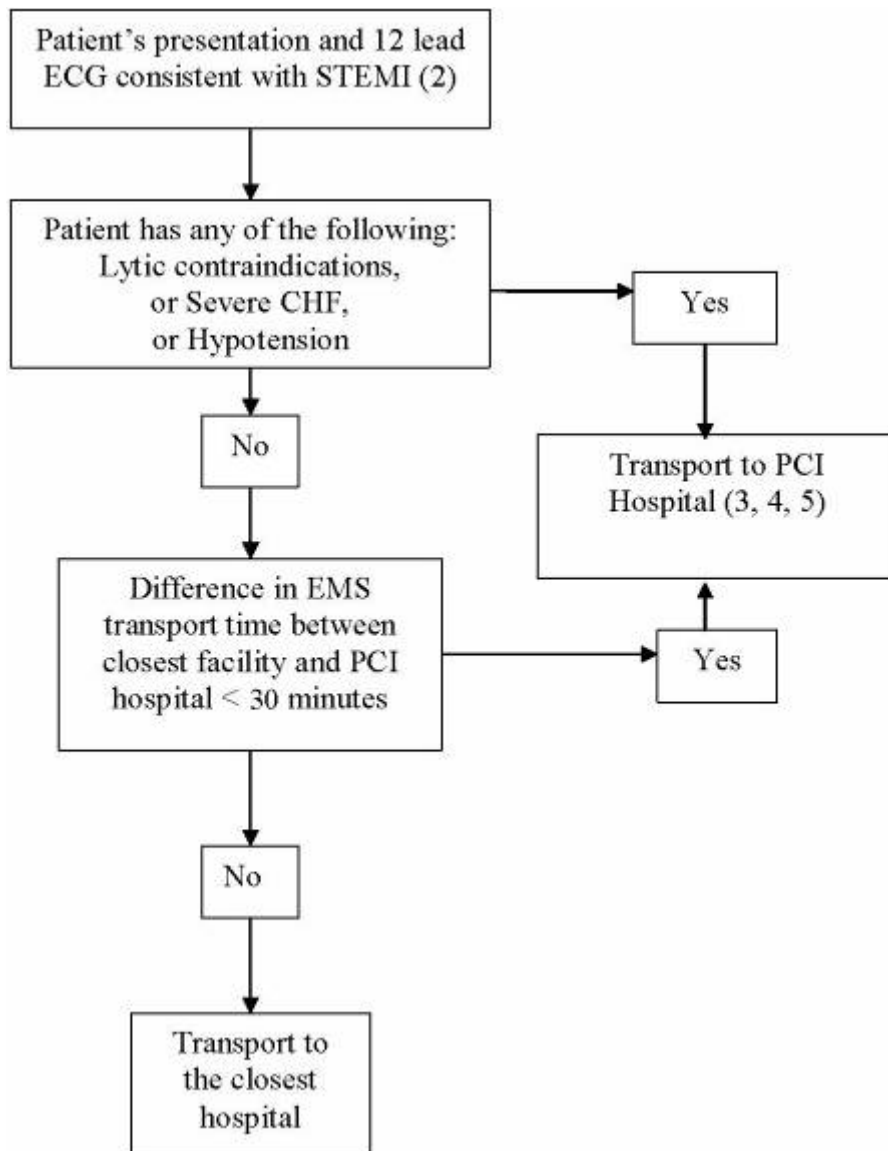


**DPH-Approved Statewide Point of Entry Plan and Algorithm for  
Paramedic-Level Transported STEMI Patients**



Following conditions apply:

- (1) Patients in arrest, with compromised airway, or transported at BLS or ALS-Intermediate level will go to the closest appropriate health care facility
- (2) Ambiguous cases transported at ALS-Paramedic level will go to closest facility
- (3) Contact medical control for any questions regarding point of entry or treatment
- (4) PCI facility will be notified
- (5) Use patient's medical history and established medical relations if multiple PCI facilities