



KODAK FLEXCEL NX WIDE 4260/3548 SYSTEM

Versatile and Smart

The KODAK FLEXCEL NX System has a serious advantage. One that goes beyond the traditional capabilities of flexo. It's flexo without compromise. Ready to compete?

Efficient large-format plate layout and production is yours with the KODAK FLEXCEL NX Wide 4260/3548 System. With enhanced edge detection for easy media handling and a streamlined install, it's where versatile, high-quality imaging celebrates outstanding print efficiencies and exceptional print quality. The standard for high volume operations, its compact footprint defines doing more with less.

Unmatched technology.

You want unsurpassed quality output with zero impact on productivity. Kodak's unique imaging technology gives you the powerful NX Advantage that sets you up for guaranteed success on press. And with KODAK SQUARESPOT Imaging Technology, impeccable process control is yours. Consistent, efficient, compelling. What quality gap?

Looking for the fastest imaging speed in the industry? FLEXCEL NX Imagers expose the KODAK FLEXCEL NX Thermal Imaging Layer at breathtaking speed. Expect highly efficient and cost-effective plate making. On repeat.

Rich capabilities.

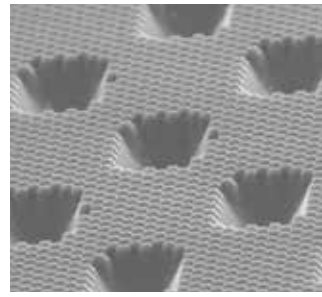
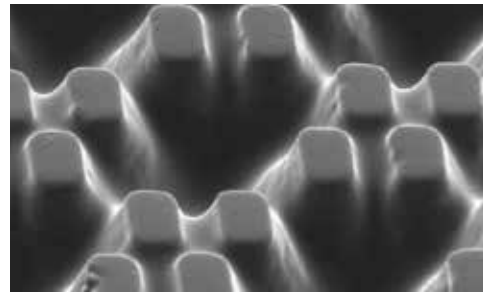
Versatile products and proven technologies that can adapt quickly to shifting markets are the rule. Already a robust platform, enhancements to the FLEXCEL NX System are backwards compatible. Outstanding imaging technology, impressive productivity and process stability along with easy maintenance — a solid ROI.

Complete solution.

With innovative hardware, software, and consumables designed to work seamlessly together, the KODAK FLEXCEL NX System delivers one powerful performance. Along with Kodak's world-class service and support, you have a best-in-class solution for high-definition flexo printing that exceeds expectations. Even yours.

It's flexo. Transformed.





Complete integration.

FLEXCEL NX Wide 4260/3548 Imager

Easy to use and semi-automatic with impressively fast imaging, it's designed to work exclusively with KODAK FLEXCEL NX Plate Kits. And for a process-free alternative to conventional silver halide film, it's fully compatible for KODAK DITR Film imaging.

FLEXCEL NX Wide Laminator

Quick and simple lamination of the FLEXCEL NX Thermal Imaging Layer to the FLEXCEL NX Plate prior to exposure and processing removes all oxygen between mask and plate for full-amplitude flat top dots. Crystal clear difference.

FLEXCEL NX Workstation

Includes KODAK TIFF Assembler Plus Software, fully loaded and feature-rich for managing plate layouts, deploying Kodak's powerful NX Advantage technology, and supporting third-party cutting tables.

Powered by NX Advantage

Kodak's NX Advantage technology, that includes patented Advanced Edge Definition, is unique to the FLEXCEL NX System and gives flexo printers an unprecedented level of control over ink transfer during the printing process, resulting in substantial print production efficiency and quality benefits with a simple plate portfolio.

SQUARESPOT Technology

KODAK SQUARESPOT Imaging Technology is Kodak's award-winning thermal imaging technology, available only in Kodak imaging devices. SQUARESPOT Technology allows printers to reach a higher level of stability, accuracy, and reliability in their printing operation.

Accessories



Densitometer

Standard with every FLEXCEL NX Wide 4260/3548 System, the X-RITE 361T UV Densitometer is a quality control tool for imaging set-up and troubleshooting.



Media Rack

Convenient, mobile, and designed to be placed adjacent to the NX Wide 4260/3548 Imager to ensure easy media handling.



Rolling Plate Cart

Smartly designed to tilt and move for easy transportation of wide format plates between lamination, exposure, and processing stations.

KODAK FLEXCEL NX

WIDE 4260/3548 SYSTEM

Workflow Specifications					
Workflow connectivity	KODAK TIFF Assembler Plus Software; accepts 1 bit TIFF and LEN files from all workflows systems.				
Specifications for imaging KODAK FLEXCEL NX Thermal Imaging Layer (TIL)					
Imaging speed	With DIGICAP NX Patterning applied: 12 m ² /hr Without DIGICAP NX Patterning applied: 10 m ² /hr				
Media sizes and throughput * (includes loading and unloading)	TIL size	For plate size	4260	3548	Sheets imaged per hour@ 2400 dpi with DIGICAP NX
	640 x 838 mm (25.2 x 33 in)	610 x 762 mm (24 x 30 in)	X	X	12
	838 x 1097 mm (33 x 43.2 in)	800 x 1067 mm (31.5 x 42 in)	X	X	10
	940 x 1230 mm (37 x 48 in)	900 x 1200 mm (35.4 x 47.2 in)	X	X	9
	1097 x 1554 mm (43.2 x 61.2 in)	1067 x 1524 mm (42 x 60 in)	X		6
Resolution	2400 dpi				
Repeatability	± 8 microns between 2 consecutive exposures on the same TIL left on the drum				
Finish Plate Capabilities	300 lpi maximum linescreen (0.4% to 99.6%)				
Physical characteristics for imager					
Dimensions (H x W x D)	120 x 254 x 181 cm (47.2 x 100 x 71.3 in), Loading table height: 83 cm (33 in)				
Debris removal cabinet (UDRC)	88 x 63 x 54 cm (35 x 25 x 21 in)				
Weight	Imager: 990 kg (2183 lb) UDRC: 68 kg (150 lb)				
Physical Characteristics for laminator					
Dimensions (H x W x D)	87 x 273 x 133 cm (34 x 107 x 52 in), Table height: 81 cm (32 in)				
Weight	700 kg (1540 lb)				
Operating conditions					
Temperature	17° - 30°C (63° - 86°F)				
Humidity	40% - 60% relative humidity, non-condensing				
Optional upgrades					
Hybrid Option	Enables the imaging of thermal offset plates				
Format Upgrade	Imager 3548 can be upgraded to a 4260				
Resolution Upgrade	High resolution imaging option 9600 X 4800 dpi				
KODAK FLEXCEL NX Screening Tower	Provides Kodak screening options compatible with any prepress workflow				

KODAK FLEXCEL NX System is compatible with KODAK DITR Film.

KODAK FLEXCEL NX

SYSTEM

A Full Portfolio	Plate sizes					
	610 x 762 mm 24 x 30 inch	800 x 1067 mm 31.5 x 42 inch	900 x 1200 mm 35.4 x 47.2 inch	1067 x 1524 mm 42 x 60 inch	1270 x 1651 mm 50 x 65 inch	1270 x 2032 mm 50 x 80 inch
KODAK FLEXCEL NX Wide 5080 System	X	X	X	X	X	X
KODAK FLEXCEL NX Wide 4260 System	X	X	X	X		
KODAK FLEXCEL NX Wide 3548 System	X	X	X			
KODAK FLEXCEL NX Mid System	X	X				
KODAK FLEXCEL NX Narrow System	X					

Eastman Kodak Company 343 State Street Rochester, NY 14650 USA +1-866-563-2533 in North America.
 Produced using Kodak Technology.
 © 2018 Kodak. Kodak, Digicap, Flexcel, Squarespot, and the Kodak Logo are trademarks of Kodak.
 Subject to technical change without notice. 180712

KODAK.COM/GO/FLEXCELNX

