

North Delta Water Agency



Special Board Meeting
July 27, 2021

Presented by:
Gary Kienlen – MBK Engineers

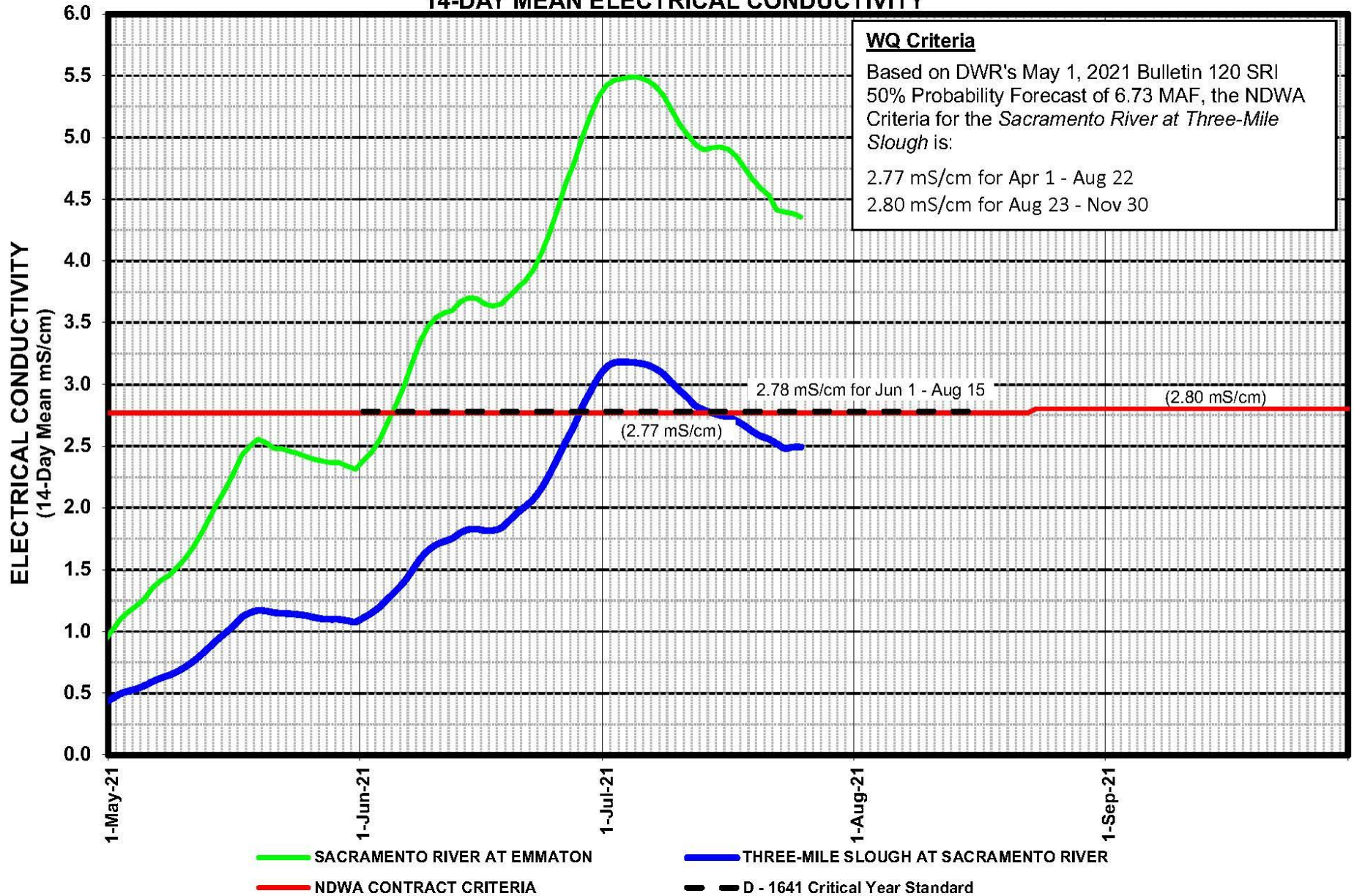
Topics for Discussion

- Current Conditions
 - Water Quality
 - Water Supply
- Prior Years Comparison
- Questions / Discussion

NORTH DELTA WATER AGENCY

SACRAMENTO RIVER AT THREE-MILE SLOUGH

14-DAY MEAN ELECTRICAL CONDUCTIVITY

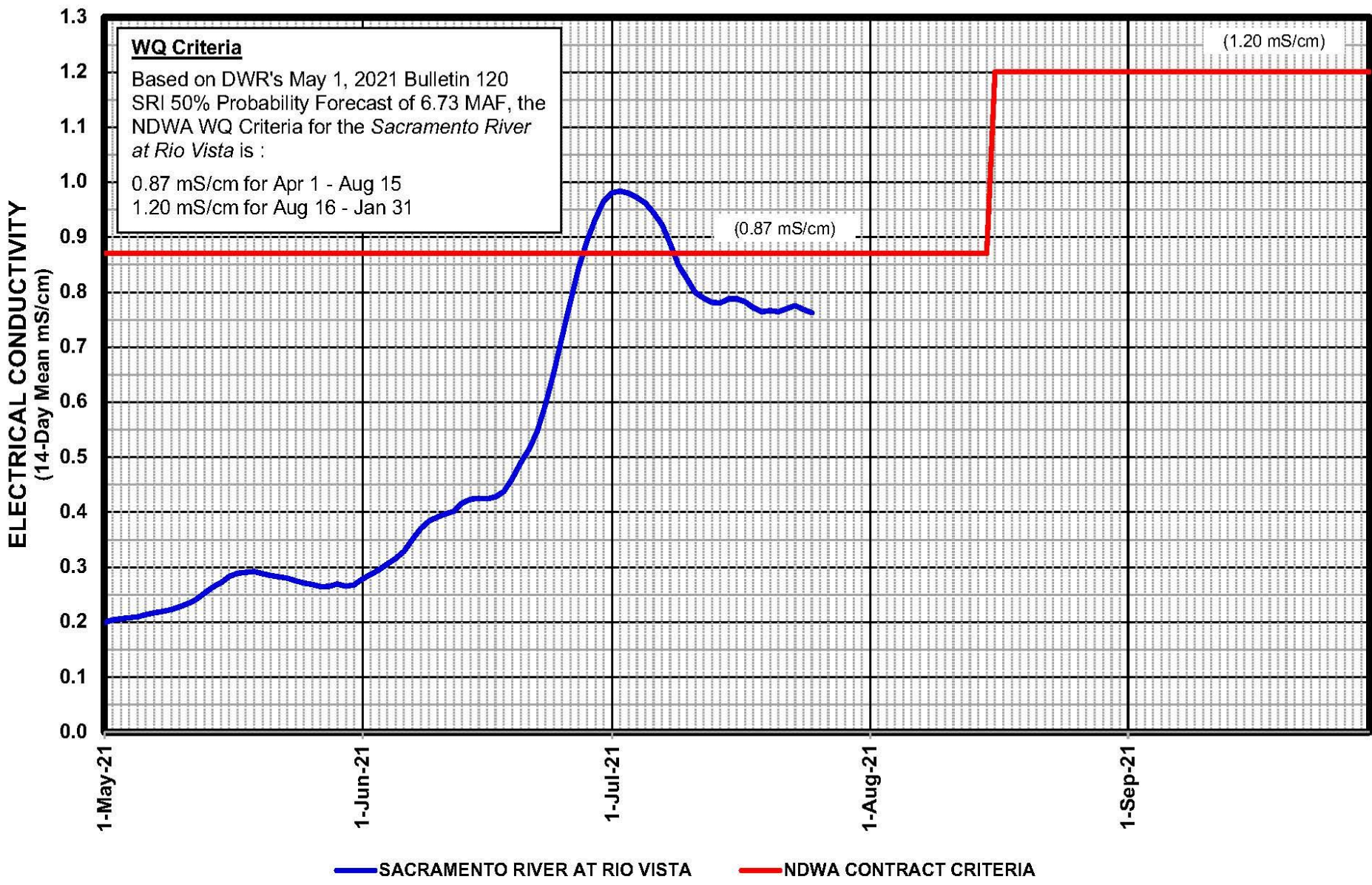


NORTH DELTA WATER AGENCY

SACRAMENTO RIVER AT RIO VISTA

14-DAY MEAN ELECTRICAL CONDUCTIVITY

WQ Criteria
Based on DWR's May 1, 2021 Bulletin 120 SRI 50% Probability Forecast of 6.73 MAF, the NDWA WQ Criteria for the *Sacramento River at Rio Vista* is :
0.87 mS/cm for Apr 1 - Aug 15
1.20 mS/cm for Aug 16 - Jan 31

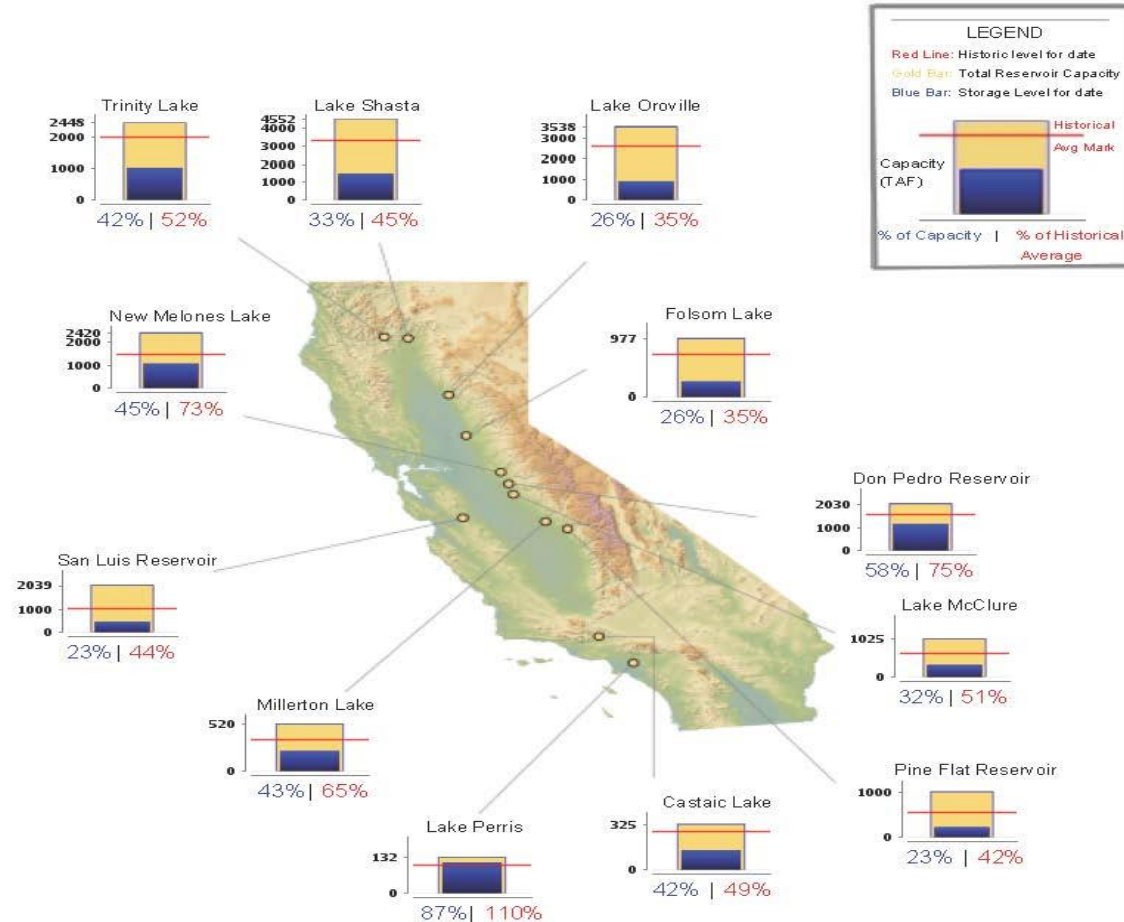


Water Supply Conditions



SELECTED WATER SUPPLY RESERVOIRS

Midnight: July 25, 2021



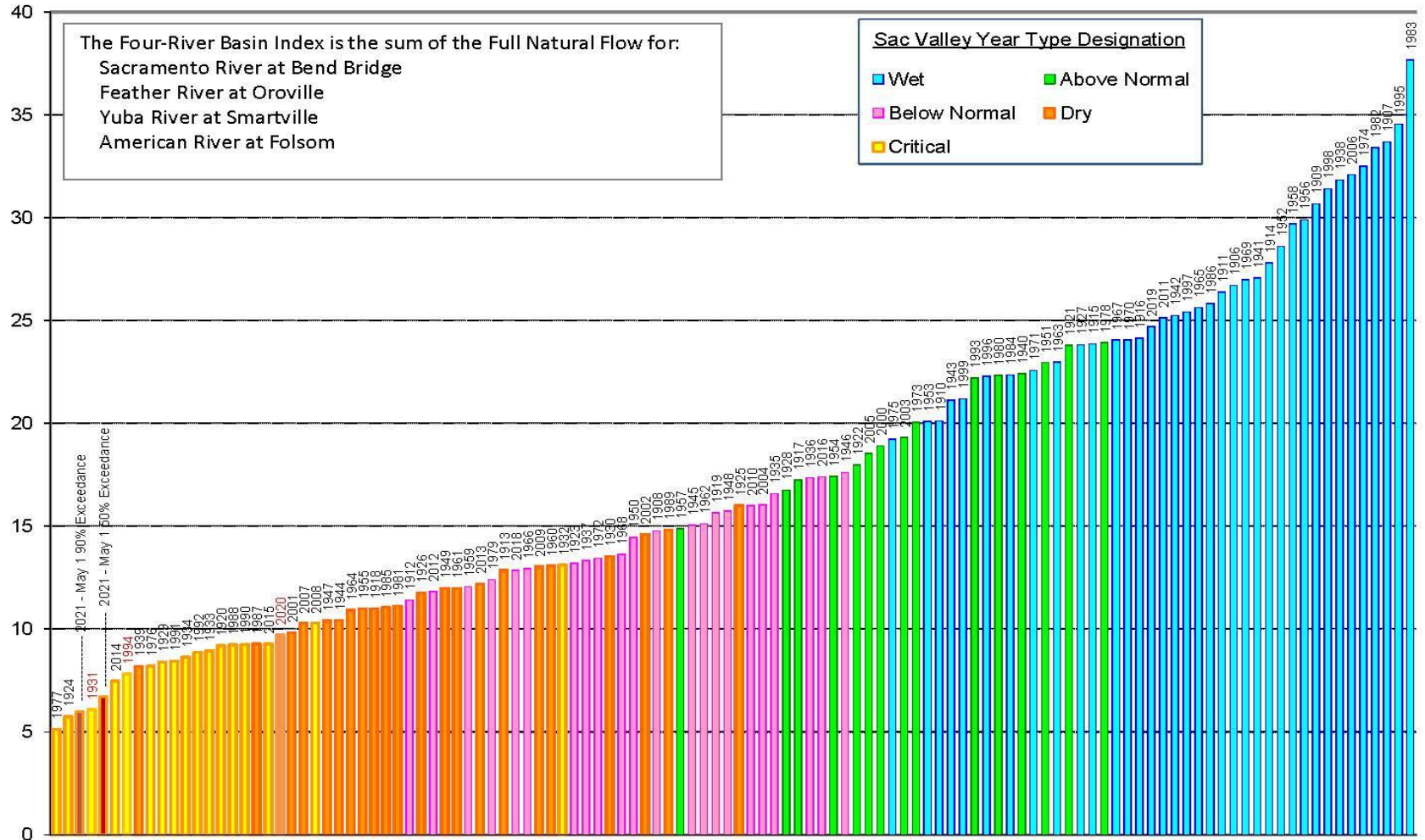
Water Supply Conditions

- State Water Project (SWP) Allocations
 - FRSA – 50% reduction per Agreements
 - 5% of Table A
- Central Valley Project (CVP) Allocations
 - Settlement Contractors – Shasta Critical Year (75%)
 - Discretionary Contracts
 - NOD AG = 0%
 - M&I = 55%
 - SOD Ag = 0%

Prior Years Comparison

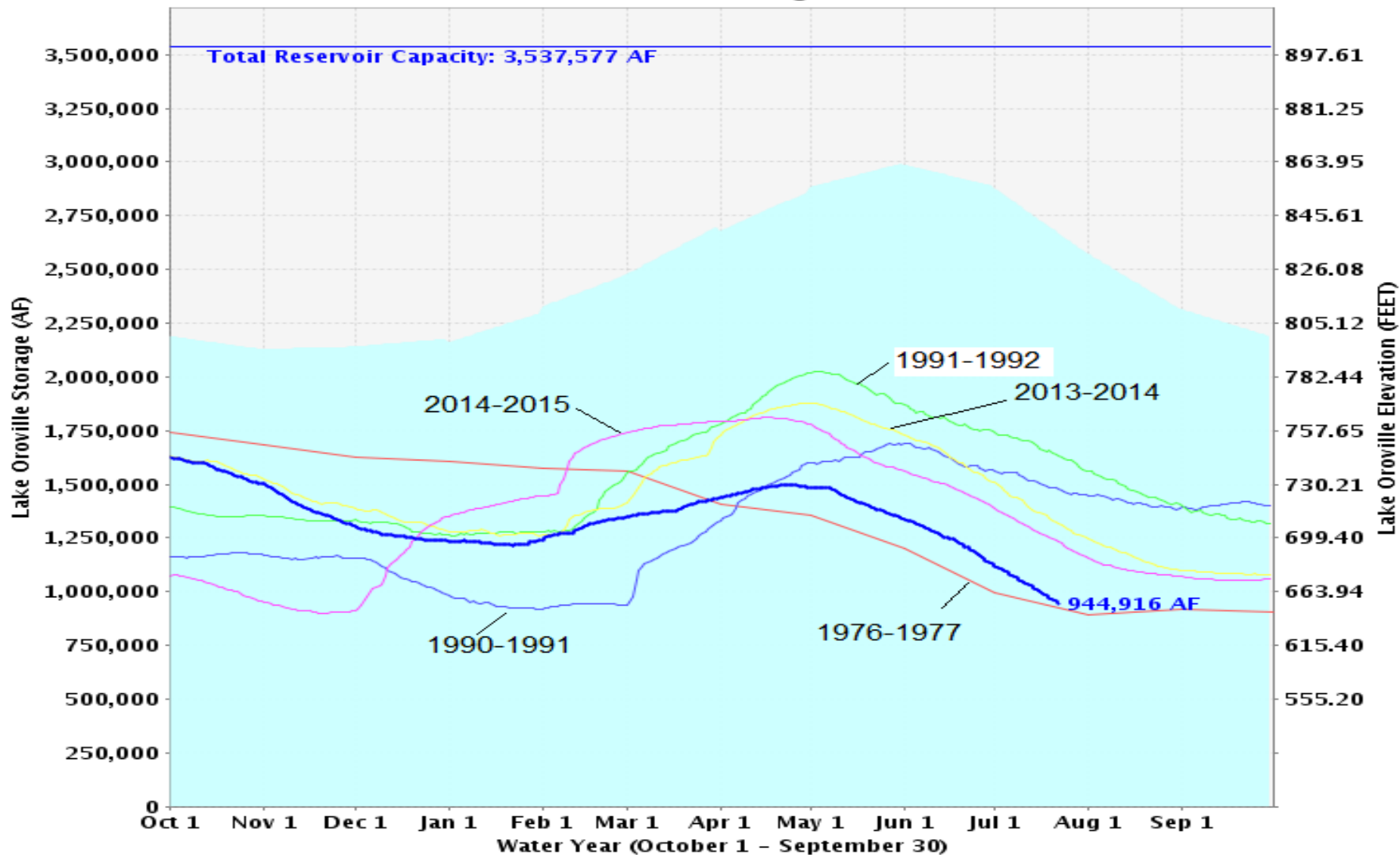
Four-River Basin Index 1906-2021 Sorted

Based on Observed Unimpaired Runoff



Prior Years Comparison

Lake Oroville Storage Levels

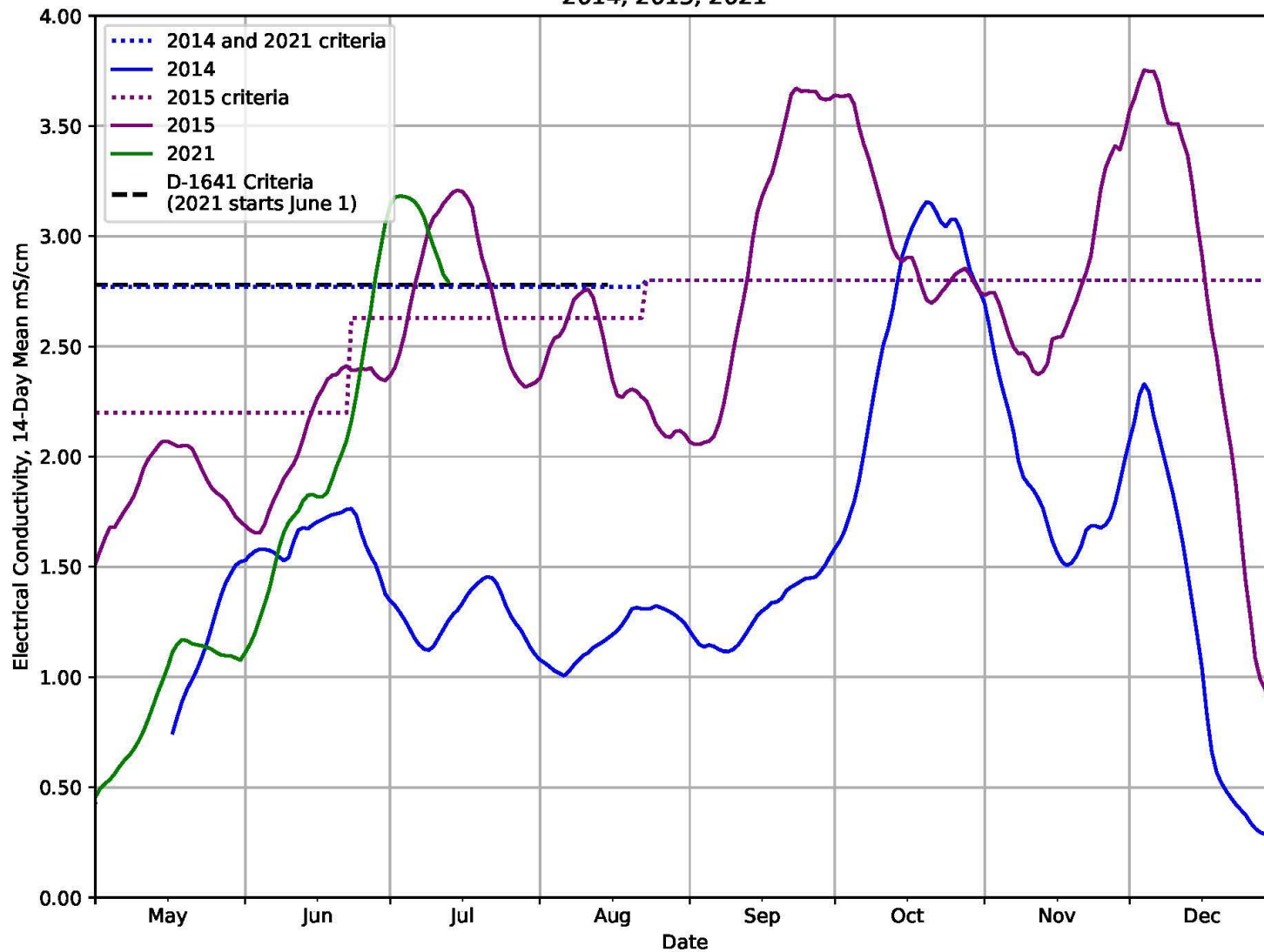


Historical Average — Total Reservoir Capacity — 1976-1977 (dry) — 1990-1991 — 1991-1992 — 2013-2014 — 2014-2015 — 2020-2021 (current)

Prior Years Comparison

Three Mile Slough Electrical Conductivity

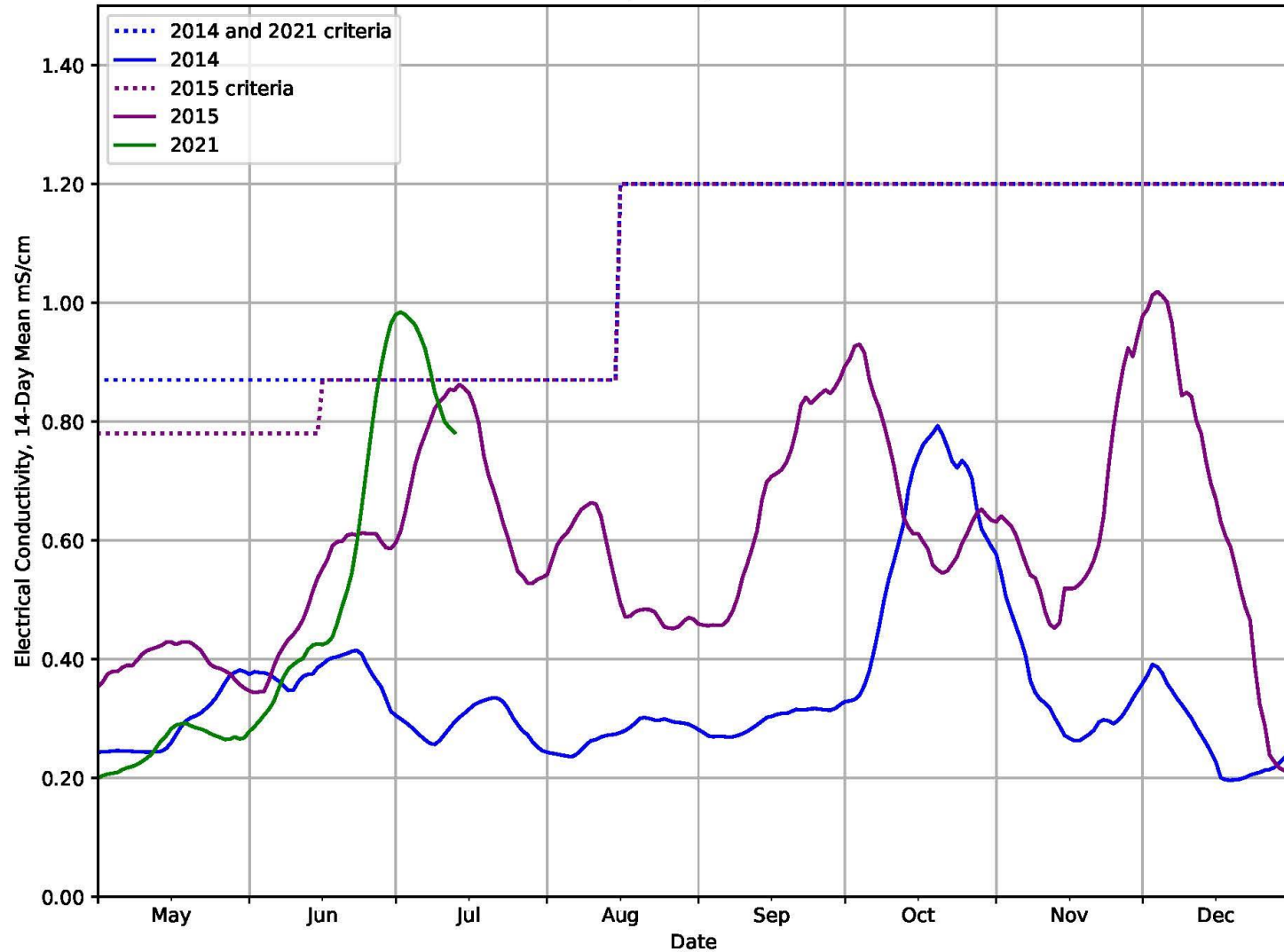
2014, 2015, 2021



Prior Years Comparison

Sacramento River At Rio Vista Bridge Electrical Conductivity

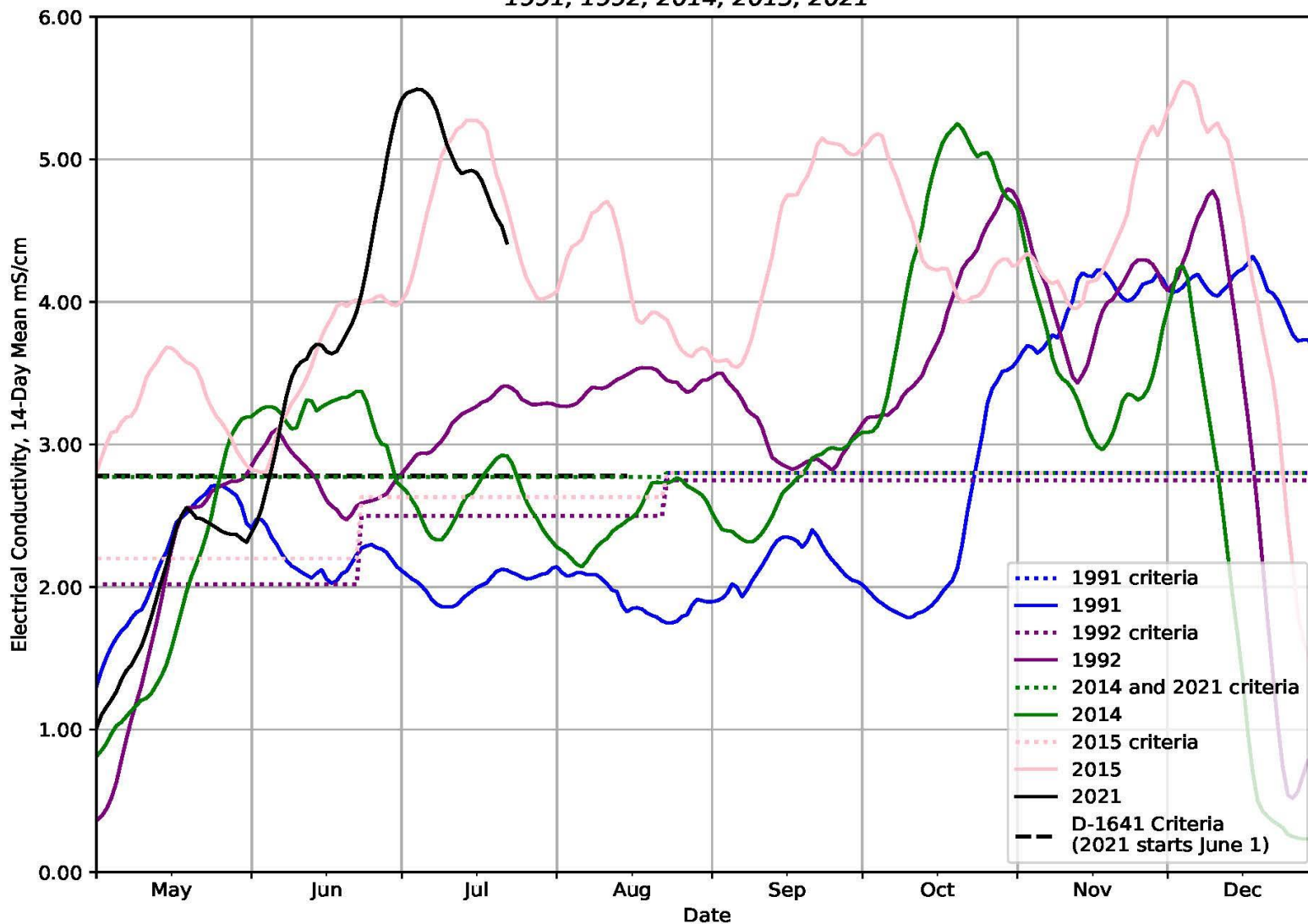
2014, 2015, 2021



Prior Years Comparison

Sacramento River at Emmaton Electrical Conductivity

1991, 1992, 2014, 2015, 2021



Questions & Discussion

