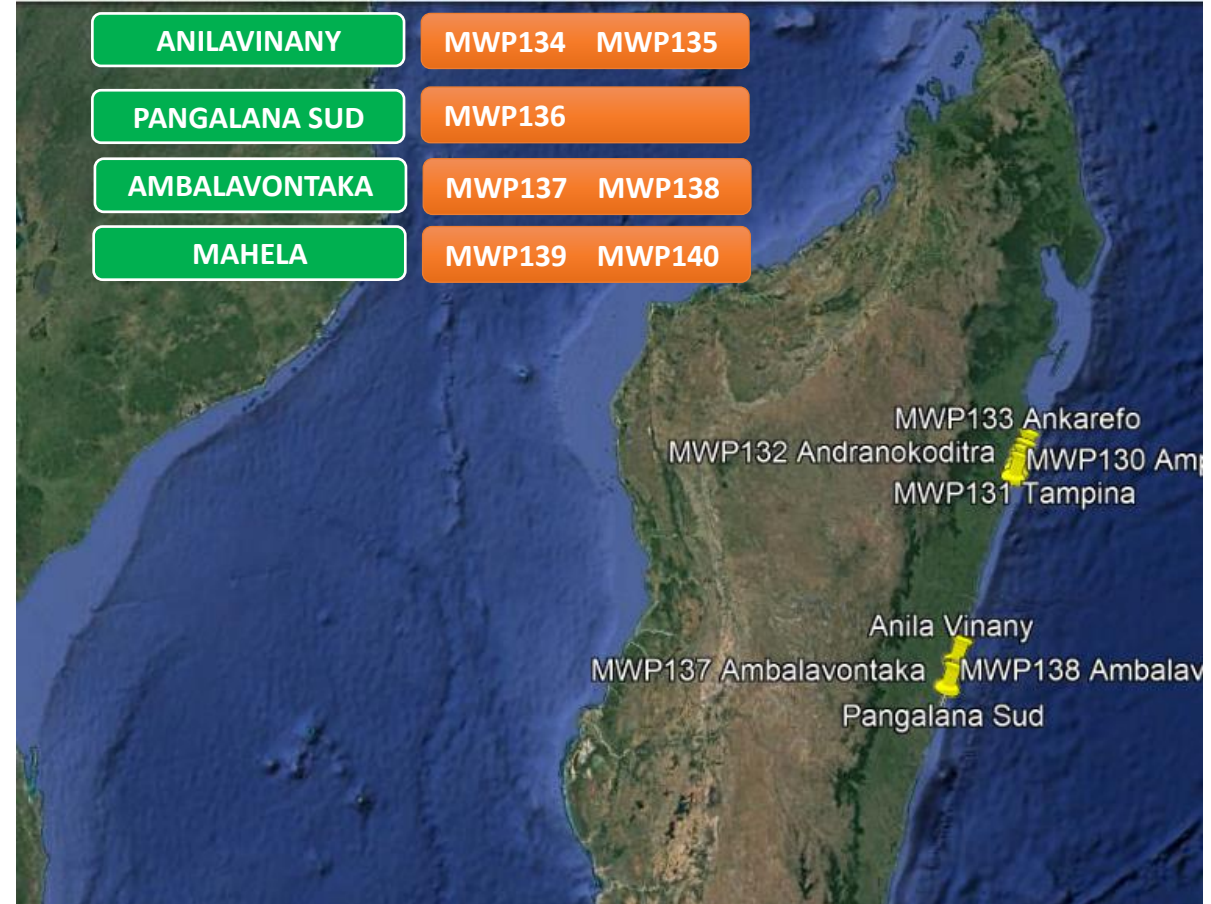




# The Madagascar Water Project

## PHASE IX Part II Program



The Second Part of the Phase IX Program was conducted in September 2021 in Eastern Madagascar in villages in the Mananjary area. Seven wells were drilled in the following four villages:

**Anilavinany | Mahela | Pangalana Sud | Ambalavontaka**

This phase of the project provides clean water to an estimated 8000 new recipients



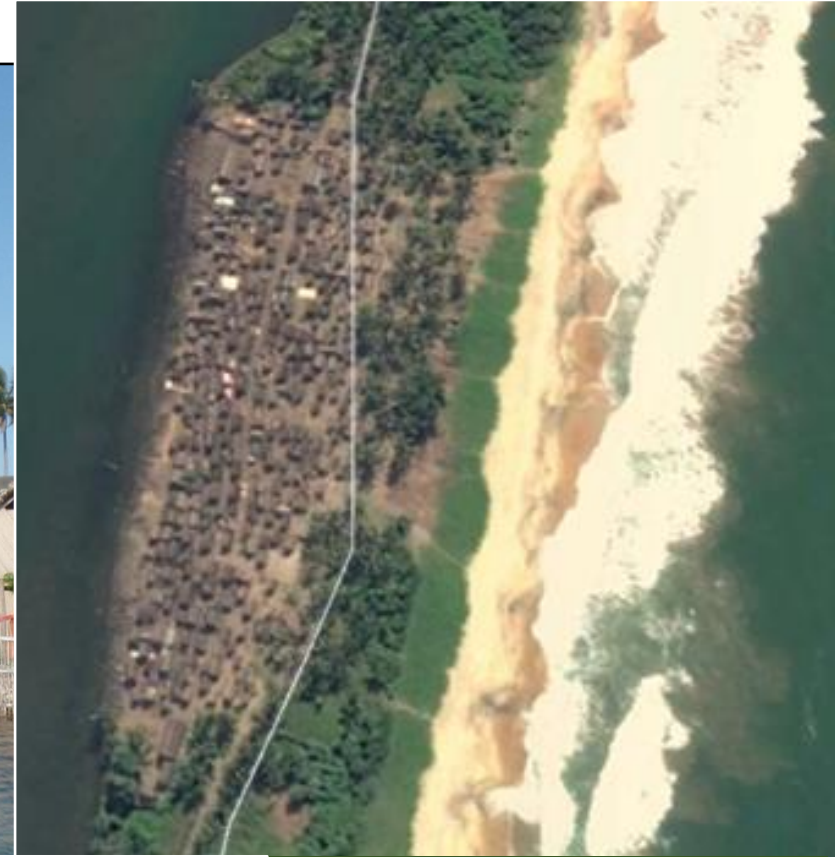
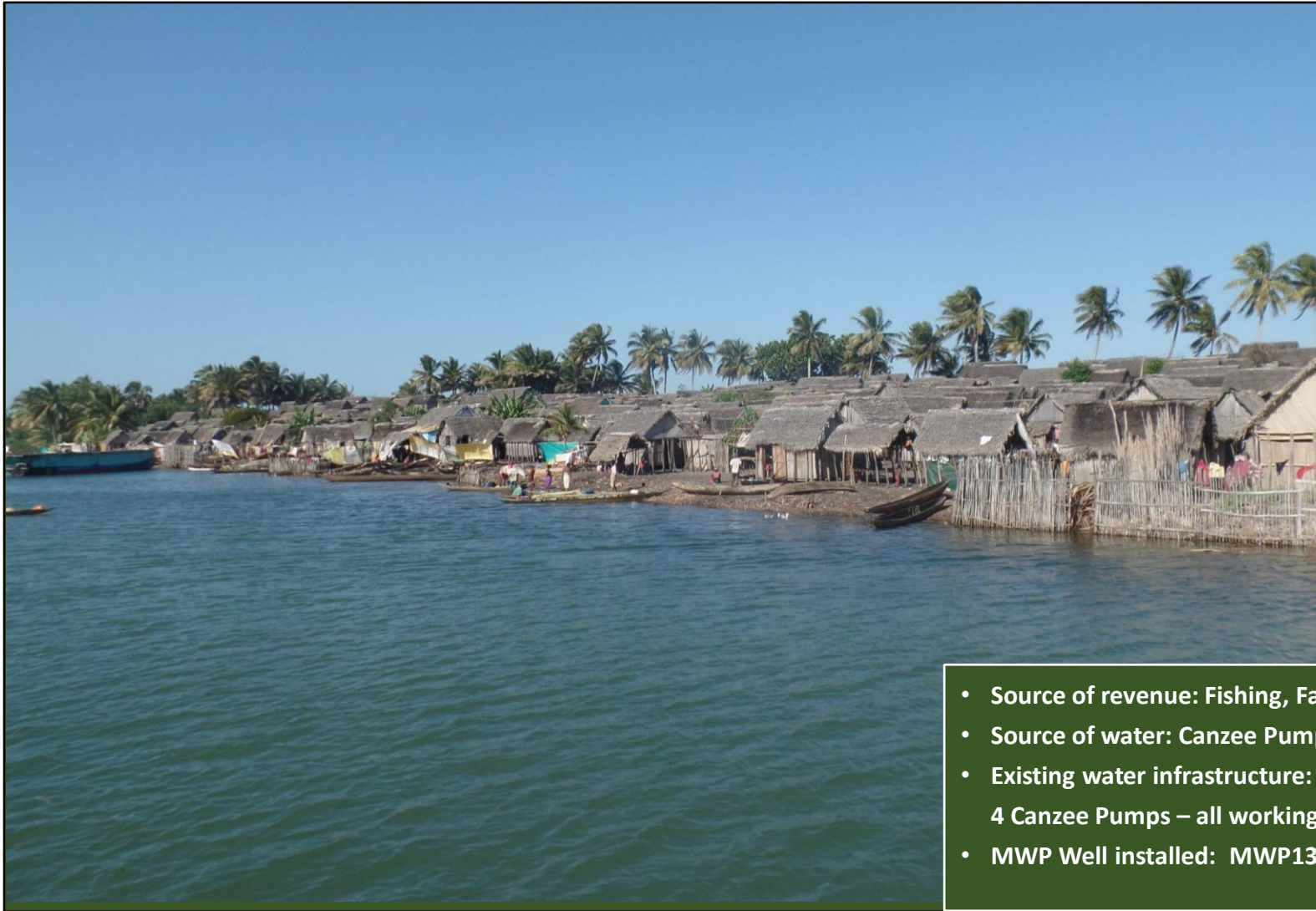


# The Madagascar Water Project

MWP134  
MWP 135

## ANILAVINANY

Lat 20°59'04.7"S Long 48°26'35.9"E



- Source of revenue: Fishing, Farming
- Source of water: Canzee Pumps, Bucket Well
- Existing water infrastructure: 1 Bucket Well, 4 Canzee Pumps – all working
- MWP Well installed: MWP134, MWP-135

- Region: Vatovavy
- District: Mananjary
- Commune: Mahela
- Fonkotany: Anilavinany
- Number of Households: 413
- Number of population: 2065



## ANILAVINANY

Lat 20°59'04.7"S Long 48°26'35.9"E



- Date of installation: September 2021
- Pump Type: XL Pump
- Pedestal: Standard
- Screen / Well Point: Steel
- Pipe: Steel

- WT: 1.8m | TD: 5.2m BGL
- Flow: 25 liters per minute
- Quality: Fresh



## ANILAVINANY

Lat 20°59'00.6"S Long 48°26'36.2"E



- Date of installation: September 2021
- Pump Type: XL Pump
- Pedestal: Standard
- Screen / Well Point: Steel
- Pipe: Steel

- WT: 1.7m | TD: 5.7m BGL
- Flow: 25 liters per minute
- Quality: Fresh



## PANGALANA SUD

Lat 21°18'15.13"S Long 48°20'1.59"E



- Region: Vatovavy
- District: Mananjary
- Commune: Ankatafana
- Fonkotany: Pangalana Sud
- Number of Households: 200
- Number of population: 1629

- Source of revenue: Fishing, Farming
- Source of water: Canzee Pumps, Private Wells
- Existing water infrastructure: 4 Canzee Pumps
- MWP Well installed: MWP136



## PANGALANA SUD

Lat 21°18'15.13"S Long 48°20'1.59"E



- Date of installation: September 2021
- Pump Type: XL Pump
- Pedestal: Standard
- Screen / Well Point: Steel
- Pipe: Steel



- WT: 2.2m | TD: 5.2m BGL
- Flow: 25 liters per minute
- Quality: Fresh



## AMBALAVONTAKA

Lat 21°19'31.6"S Long 48°19'38.9"E



- Region: Vatavavy
- District: Mananjary
- Commune: Ankatafana
- Fonkotany: Ambalavontaka
- Number of Households: 270
- Number of population: 2400

- Source of revenue: Fishing, Farming
- Source of water: Pangalana channel
- Existing water infrastructure: 4 Canzee Pumps – all broken
- MWP Well installed: MWP137, MWP-138



## AMBALAVONTAKA

Lat 21°19'31.6"S Long 48°19'38.9"E



- Date of installation: September 2021
- Pump Type: XL Pump
- Pedestal: Standard
- Screen / Well Point: Steel
- Pipe: Steel

- WT: 2.0m | TD: 5.2m BGL
- Flow: 25 liters per minute
- Quality: Fresh



## AMBALAVONTAKA

Lat 21°19'28.2"S Long 48°19'39.2"E



- Date of installation: September 2021
- Pump Type: XL Pump
- Pedestal: Standard
- Screen / Well Point: Steel
- Pipe: Steel

- WT: 1.8m | TD: 4.2m BGL
- Flow: 25 liters per minute
- Quality: Fresh

Well point had to be worked about 1 meter to find permeability. Check valve could not be installed due to interference with the pedestal.



## MAHELA

Lat 20°58'09.9"S Long 48°26'29.9"E

- Region: Vatovavy
- District: Mananjary
- Commune: Mahela
- Fonkotany: Mahela
- Number Households: 587
- Number of population: 2900



- Source of revenue: Fishing, Farming
- Source of water: Open Bucket Wells, Pangalana channel
- Existing water infrastructure: 1 Bucket Well  
3 Canzee Pumps – all broken
- MWP Wells installed: MWP139, MWP-140



## MAHELA

Lat 20°58'09.9"S Long 48°26'29.9"E



- Date of installation: September 2021
- Pump Type: XL Pump
- Pedestal: Standard
- Screen / Well Point: Steel Pipe: Steel

WT: 1.7m | TD: 4.2m BGL  
Flow: 25 liters per minute  
Quality: Fresh, Brownish Color

Penetration stopped at 4.8m BGL.  
Well point had to be worked about 1  
meter to find permeability.



## MAHELA

Lat 20°58'10.9"S Long 48°26'32.0"E



- Date of installation: September 2021
- Pump Type: XL Pump
- Pedestal: Standard
- Screen / Well Point: Steel
- Pipe: Steel

- WT: 1.8m | TD: 5.2m BGL
- Flow: 25 liters per minute
- Quality: Fresh